

9. Klavierstücke 1968

(nach (unpräzise Gedanken) von
Stanislaw Jerzy Lec (1909)

von Adolf Scherbaum

(Wiederholungen
sind alle gemacht
worden)

(bei N. 9. — mit veränderten
Klavier-)

Selbst sein Schweigen enthielt Sprachfehler

lento 1.

Handwritten musical notation for the first system. It consists of two staves. The upper staff is in treble clef with a 4/4 time signature and a circled '1.' above it. It contains three measures of music with notes and rests, some marked with accents. The lower staff is in bass clef and contains three measures of chords, with some notes marked with accents.

Handwritten musical notation for the second system. It consists of two staves. The upper staff is in treble clef and contains two measures of music with notes and rests, some marked with accents. The lower staff is in bass clef and contains two measures of chords, with some notes marked with accents.

Handwritten musical notation for the third system. It consists of two staves. The upper staff is in treble clef and contains two measures of music with notes and rests, some marked with accents. The lower staff is in bass clef and contains two measures of music, including a wavy line in the first measure and a chord in the second measure. Above the second measure, the text "letzte + mit." is written. The system ends with a double bar line and repeat signs.

Handwritten musical notation for the fourth system. It consists of two staves. The upper staff is in treble clef and contains two measures of music with notes and rests, some marked with accents. The lower staff is in bass clef and contains two measures of chords, with some notes marked with accents.

Handwritten musical notation on a grand staff. The top staff has a treble clef and contains notes with stems and beams. The bottom staff has a bass clef and contains notes with stems and beams. There are various annotations including a 'b' symbol, a 'p' dynamic marking, and some bracketed structures.

Handwritten musical notation on a grand staff. The top staff has a treble clef and contains notes with stems and beams. The bottom staff has a bass clef and contains notes with stems and beams. There are various annotations including a 'p' dynamic marking, a 'b' symbol, and some bracketed structures.

Handwritten musical notation on a grand staff. The top staff has a treble clef and contains notes with stems and beams. The bottom staff has a bass clef and contains notes with stems and beams. There are various annotations including a 'p' dynamic marking, a 'b' symbol, and some bracketed structures.

Um an die Quelle zu kommen, muß man
gegen den Strom schwimmen.

(2)

Conto

Handwritten musical notation for the first system. It features a treble clef and a 4/8 time signature. The music is marked with a circled number '2' and a piano (p) dynamic. The notation includes a triplet of eighth notes in the first measure, followed by a quarter note with a sharp sign. The second measure contains a triplet of eighth notes with a sharp sign, and a quarter note with a sharp sign. The third measure has a quarter note with a flat sign and a quarter note with a flat sign. The fourth measure has a quarter note with a flat sign and a quarter note with a flat sign. There are also some scribbles and a slash in the fourth measure.

Ped. -

Handwritten musical notation for the second system. It continues the piece with similar notation and dynamics. The first measure has a triplet of eighth notes with a sharp sign, followed by a quarter note with a sharp sign. The second measure has a triplet of eighth notes with a sharp sign, and a quarter note with a sharp sign. The third measure has a quarter note with a flat sign and a quarter note with a flat sign. The fourth measure has a quarter note with a flat sign and a quarter note with a flat sign. There are also some scribbles and a slash in the fourth measure.

Handwritten musical notation for the third system. It shows more complex rhythmic patterns and accidentals. The first measure has a triplet of eighth notes with a sharp sign, followed by a quarter note with a sharp sign. The second measure has a triplet of eighth notes with a sharp sign, and a quarter note with a sharp sign. The third measure has a quarter note with a flat sign and a quarter note with a flat sign. The fourth measure has a quarter note with a flat sign and a quarter note with a flat sign. There are also some scribbles and a slash in the fourth measure.

Handwritten musical notation for the fourth system. It concludes the piece with similar notation and dynamics. The first measure has a triplet of eighth notes with a sharp sign, followed by a quarter note with a sharp sign. The second measure has a triplet of eighth notes with a sharp sign, and a quarter note with a sharp sign. The third measure has a quarter note with a flat sign and a quarter note with a flat sign. The fourth measure has a quarter note with a flat sign and a quarter note with a flat sign. There are also some scribbles and a slash in the fourth measure.

(forte + rit)

Handwritten musical notation for the first system, featuring a grand staff with treble and bass clefs. The treble clef part has a slur over two measures, each containing a complex chord with accidentals and stems. The bass clef part has a few notes and rests. A circled 'F' is in the second measure of the bass line, and a circled 'Fine' is at the end of the system.

Handwritten musical notation for the second system, featuring a grand staff. The treble clef part has a slur over two measures with notes and accidentals. The bass clef part has notes and rests. The word "ppp" is written below the first measure, and "Ped." is written below the second measure. A circled "F" is at the end of the system.

Handwritten musical notation for the third system, featuring a grand staff. The treble clef part has a slur over two measures with notes and accidentals. The bass clef part has notes and rests. The word "Ped." is written below the first measure. The system ends with "G.P. ||" and "D.C. al Fine".

Einsamkeit! Wie bist du überfüllert,

3.

Breit

Handwritten musical notation for the first system. It consists of two staves: a treble clef staff on top and a bass clef staff on the bottom. The treble staff begins with a key signature of one flat (B-flat) and contains several chords and notes. The bass staff contains corresponding chords and notes, with some notes marked with a '+' sign. The notation is written in a fluid, handwritten style.

Handwritten musical notation for the second system. It continues from the first system with two staves. The treble staff shows a change in key signature to two flats (B-flat and E-flat). The bass staff continues with chords and notes, maintaining the handwritten style.

Handwritten musical notation for the third system. It begins with the instruction 'subito' and a boxed 'ppp' dynamic marking. The notation includes the instruction '(wie ein Choral)' and '(letzte Fort.)'. The system concludes with a double bar line and a circled 'Fine' marking. The bass staff has a 'ppp' marking at the end.

Handwritten musical score for a piano piece. The score is written on a grand staff (treble and bass clefs). The music is characterized by complex, overlapping lines with many slurs and accidentals (sharps and naturals). The dynamic marking *ppp* is present. The word *rubato* is written below the bass staff. The notation includes various note values, rests, and some unusual symbols, possibly indicating specific performance techniques or ornaments.

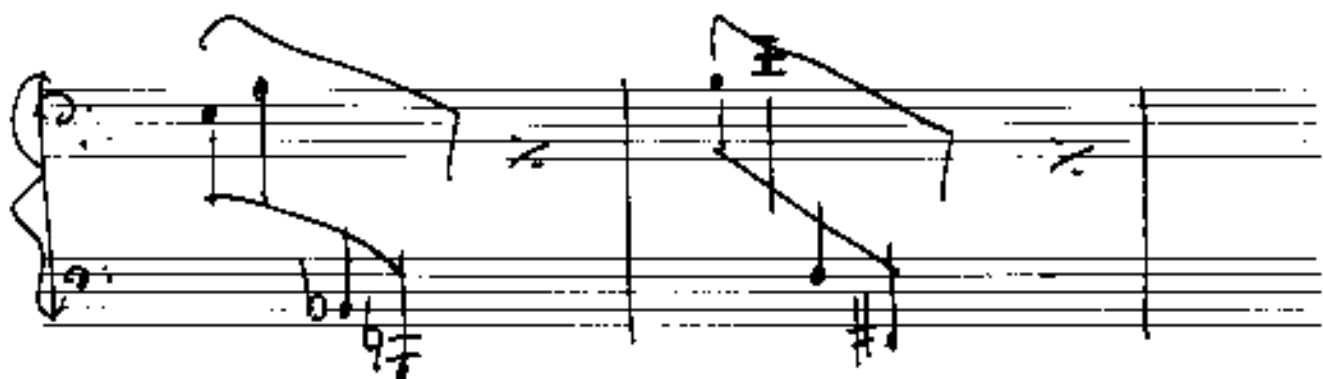
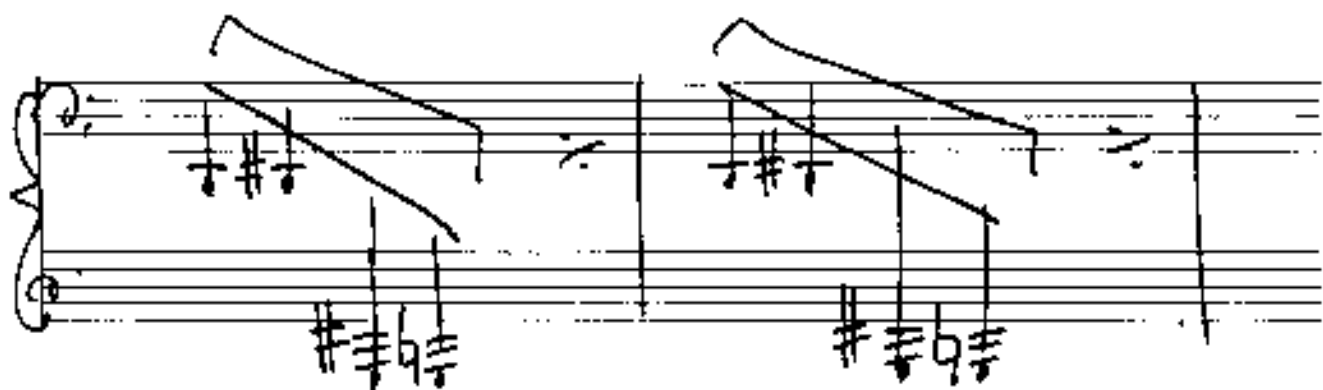
Handwritten musical score for a piano piece. The score is written on a grand staff. The notation is sparse, consisting of several notes and rests. The dynamic marking *ppp* is present, along with the tempo marking *Lento*. The piece concludes with the instruction *2. + p.c. al Fine*. The score is enclosed in a large hand-drawn box.

Presto (PMT) 4+

1+ ppp
2+ ppp
3+ ppp
4+ ppp

Die Zeit ist ein
Menschenfresser

4



Handwritten musical notation on a grand staff (treble and bass clefs). The music features a melodic line in the treble clef and a supporting line in the bass clef. A large slur covers the first two measures, and a fermata is placed over the final measure. The key signature has two sharps (F# and C#).

Handwritten musical notation on a grand staff. This system continues the piece with a more active melodic line in the treble clef and a steady accompaniment in the bass clef. The notation includes various note values and rests.

Handwritten musical notation on a grand staff. The treble clef part features a long, sweeping slur that spans across several measures. The bass clef part contains vertical lines, possibly representing a tremolo or a specific rhythmic pattern. The word "Ped." is written at the beginning of the system.

Handwritten musical notation on a grand staff. This system includes a variety of notes and rests. A circled number "4x" is written above the staff. The piece concludes with a final chord in the bass clef and a wavy line in the treble clef. The key signature remains two sharps.

5.

Im Stromerwächten trug er einen Regenkürzel.
Ihm ängstigte der Gedanke an
den Kosmos!

sehr ruhig (langsam)

Handwritten musical notation for the first system. It consists of two staves: a treble clef staff and a bass clef staff. The time signature is 4/4. The first measure of the treble staff contains a circled 'pp' dynamic marking. The music features various notes, rests, and slurs across both staves.

Handwritten musical notation for the second system. It consists of two staves: a treble clef staff and a bass clef staff. The music continues with various notes, rests, and slurs.

Handwritten musical notation for the third system. It consists of two staves: a treble clef staff and a bass clef staff. The music continues with various notes, rests, and slurs.

Handwritten musical notation for the fourth system. It consists of two staves: a treble clef staff and a bass clef staff. The music continues with various notes, rests, and slurs.

(letzte 4 qu. rit.)

pp

p

Fine

pp

Plan

S.P.

10 Sekunden

↓ auf Seiten ausreißer ↓

fast ausklingen lassen

D.C. all fin

6

Unser Wissen erobert immer
weitere Welten.

cello

Handwritten musical score for the first system. The top staff is the treble clef with a 12/8 time signature and a 'pp' dynamic marking. The bottom staff is the bass clef. The music consists of two measures. The first measure has a treble staff with notes G4, A4, B4, C5, D5, E5, F5, G5 and a bass staff with a complex chordal texture. The second measure continues the melodic line in the treble and the chordal texture in the bass.

Handwritten musical score for the second system. The top staff is the treble clef and the bottom staff is the bass clef. The music consists of two measures. The first measure has a treble staff with notes G4, A4, B4, C5, D5, E5, F5, G5 and a bass staff with a complex chordal texture. The second measure continues the melodic line in the treble and the chordal texture in the bass.

Handwritten musical score for the third system. The top staff is the treble clef and the bottom staff is the bass clef. The music consists of two measures. The first measure has a treble staff with notes G4, A4, B4, C5, D5, E5, F5, G5 and a bass staff with a complex chordal texture. The second measure continues the melodic line in the treble and the chordal texture in the bass.

Handwritten musical notation on a grand staff. The treble clef staff contains a melodic line with a slur over the first two measures and a fermata over the second measure. The bass clef staff contains a bass line with chords. The key signature has one sharp (F#).

Handwritten musical notation on a grand staff. The treble clef staff contains a melodic line with a slur over the first two measures and a fermata over the second measure. The bass clef staff contains a bass line with chords. The key signature has one sharp (F#).

Handwritten musical notation on a grand staff. The treble clef staff contains a melodic line with a slur over the first two measures and a fermata over the second measure. The bass clef staff contains a bass line with chords. The key signature has one sharp (F#).



Man kann das "Lied der Freiheit" nicht
auf dem Instrument der Gewalt spielen.

Allegro con brio (ass.)

(3x) ¹⁺²
2+3
3+4

Handwritten musical notation for the first system. It features a treble clef, a 6/4 time signature, and a key signature of one sharp (F#). The tempo marking "Allegro con brio" is written below the staff. The notation includes several measures with notes and rests, some of which are grouped with brackets. Below the staff, there are two large, sweeping lines representing phrasing or dynamics, with a key signature change from one sharp to two sharps (F# and C#) indicated between them.

Handwritten musical notation for the second system. It continues the piece with a treble clef and a 6/4 time signature. The key signature remains one sharp (F#). The notation includes notes, rests, and some dynamic markings. Below the staff, there are two large, sweeping lines representing phrasing or dynamics, with a key signature change from one sharp to two sharps (F# and C#) indicated between them.

Handwritten musical notation for the third system. It continues the piece with a treble clef and a 6/4 time signature. The key signature remains one sharp (F#). The notation includes notes, rests, and some dynamic markings. Below the staff, there are two large, sweeping lines representing phrasing or dynamics, with a key signature change from one sharp to two sharps (F# and C#) indicated between them.

Handwritten musical notation for the first system. The top staff is in treble clef and contains several measures of music with notes and stems. The bottom staff is in bass clef and features a long horizontal line. A handwritten note "## o|||o|" is written between the staves, with an arrow pointing to the bottom staff.

Handwritten musical notation for the second system. The top staff is in treble clef and contains several measures of music. The bottom staff is in bass clef and features a long horizontal line. A handwritten note "## o|||o|" is written between the staves.

Handwritten musical notation for the third system. The top staff is in treble clef and contains several measures of music. The bottom staff is in bass clef and features a long horizontal line. A handwritten note "o|||o|" is written between the staves.

Handwritten musical notation for the fourth system. The top staff is in treble clef and contains several measures of music. The bottom staff is in bass clef and features a long horizontal line. A handwritten note "o|||o|" is written between the staves. A diagonal line labeled "Glass" points from the bottom staff to the top staff. A label "Pad" is written near the bottom staff. A label "Fire" is written at the end of the system.

8.

Er war Treu wie ein Hund — wie einer
Hund haben sie ihn erschlagen.

perante

Handwritten musical notation for the first system. It consists of two staves: a treble clef staff and a bass clef staff. The treble staff contains a sequence of notes and rests, including a half note, a quarter note, and a dotted quarter note. The bass staff contains a sequence of notes and rests, including a half note, a quarter note, and a dotted quarter note. The notation is in a 4/4 time signature and includes various accidentals (sharps and flats).

Handwritten musical notation for the second system. It consists of two staves: a treble clef staff and a bass clef staff. The treble staff contains a sequence of notes and rests, including a half note, a quarter note, and a dotted quarter note. The bass staff contains a sequence of notes and rests, including a half note, a quarter note, and a dotted quarter note. The notation is in a 4/4 time signature and includes various accidentals (sharps and flats).

Handwritten musical notation for the third system. It consists of two staves: a treble clef staff and a bass clef staff. The treble staff contains a sequence of notes and rests, including a half note, a quarter note, and a dotted quarter note. The bass staff contains a sequence of notes and rests, including a half note, a quarter note, and a dotted quarter note. The notation is in a 4/4 time signature and includes various accidentals (sharps and flats).

(poco rit)

Handwritten musical score for the first system. It consists of two staves. The upper staff is in treble clef and contains several measures of music with notes, rests, and dynamic markings. The lower staff is in bass clef and contains notes with stems and various accidentals. A dynamic marking of *pp* is present in the second measure of the lower staff.

Handwritten musical score for the second system. It continues the notation from the first system, with two staves in treble and bass clefs. The notation includes notes, rests, and dynamic markings.

rit.

Handwritten musical score for the third system. It features two staves. The upper staff has a wavy line indicating a trill or tremolo, with a dynamic marking of *ppp* and the instruction *d.c. al*. The lower staff contains notes and rests. A dynamic marking of *ppp* is also present in the lower staff.

ppp

Handwritten musical score for the fourth system. It consists of two staves. The upper staff begins with a dynamic marking of *ppp* and contains notes and rests. The lower staff contains notes and rests. The system concludes with a double bar line and a signature.

9

Die Uhr schlägt

Alle

so ruhig als möglich

(Klaviersaiten - mit Holzhammer
betonen)

Handwritten musical score for the first system, measures 1-3. It features a treble clef, a key signature of one sharp (F#), and a 4/4 time signature. The music includes a melody in the treble clef and accompaniment in the bass clef. Above the first measure, there are notes with stems and beams, and a dynamic marking 'ppp'. The second measure has a '3' above it, and the third measure has a '4' above it. A slur covers the notes in the second and third measures. Below the staff, there is a note 'auf Saiten' with an arrow pointing to the right.

Handwritten musical score for the second system, measures 4-6. It features a treble clef, a key signature of one flat (Bb), and a 4/4 time signature. The music includes a melody in the treble clef and accompaniment in the bass clef. Above the first measure, there are notes with stems and beams, and a dynamic marking 'ppp'. The second measure has a '3' above it, and the third measure has a '4' above it. A slur covers the notes in the second and third measures. Below the staff, there is a note 'auf Saiten' with an arrow pointing to the right.

Handwritten musical score for a string quartet. The score is written on four staves. The first staff uses a treble clef and a key signature of one sharp (F#). The second and third staves use alto clefs, and the fourth staff uses a bass clef. The notation includes various notes, rests, and dynamic markings such as *p* and *pp*. There are also some handwritten annotations in the first staff, including "pillo" and "pillo".

Handwritten musical score for a string quartet, continuing from the previous section. It shows four staves with rhythmic patterns and dynamic markings like *ppp* and *ppp*. There are also some handwritten annotations in the first staff, including "ppp" and "ppp".

Handwritten musical score for a string quartet, continuing from the previous section. It shows four staves with rhythmic patterns and dynamic markings like *ppp* and *ppp*. There are handwritten notes at the bottom right: "günstiger verhaltensweise lassen (Hofmann Schenker)" and "Freie der Stücke."