

L.v. BEETHOVEN



W.A. MOZART



# NOTENHEFT

F. SCHUBERT



J. HAYDN



J. STRAUSS



FORUM

3 Stücke für  
Jazz piano

1969

~~Stoll~~ ~~Heister~~

(Ohne Gebet ist kein Licht -  
 weder Licht noch Lied -  
 und kein Lied geheiligt. -

①

lato

(Jazz) ↓

*p* - *mp*

*mf*

*mf*

(poco rit)

*f*  
Ped.

meno

*p*  
Ped.

rit + din

*p*  
Coda

etwas bewegter

Handwritten musical notation for the first system. It consists of a treble clef on the left. A circled sharp sign (#) is written below the staff. The notation includes several notes with stems, some beamed together, and rests. A large slur covers the first two measures. A sharp sign (#) is written above the first measure. The bottom staff shows a treble clef, a sharp sign (#), and some notes.

Handwritten musical notation for the second system. It features a treble clef on the left. The notation includes notes, rests, and a sharp sign (#) above the staff. A slur is present over the first two measures. The bottom staff shows a treble clef, a sharp sign (#), and notes.

(poco rit) weit

Handwritten musical notation for the third system. It features a treble clef on the left. The notation includes notes, rests, and a sharp sign (#) above the staff. A slur is present over the first two measures. The bottom staff shows a treble clef, a sharp sign (#), and notes.

rit + din

**CODA** *profes rit + din*

Unverständlich was uns zur Reise bewog -  
 als wir sahen - der Weg führt zurück -  
 Traum der Erfüllung -

② wir du bist wirklich!  
 Nichts beginnt  
 oder endet.

Intro (Slow)





chorus  
~~12/16~~ (siehe Rezepten)

Handwritten musical notation for the first system. The top staff is in treble clef, key signature of one sharp (F#), and 7/8 time. It contains a circled '1' in the first measure, followed by several measures of beamed eighth notes and chords. The bottom staff is in bass clef, key signature of one sharp, and 6/8 time.

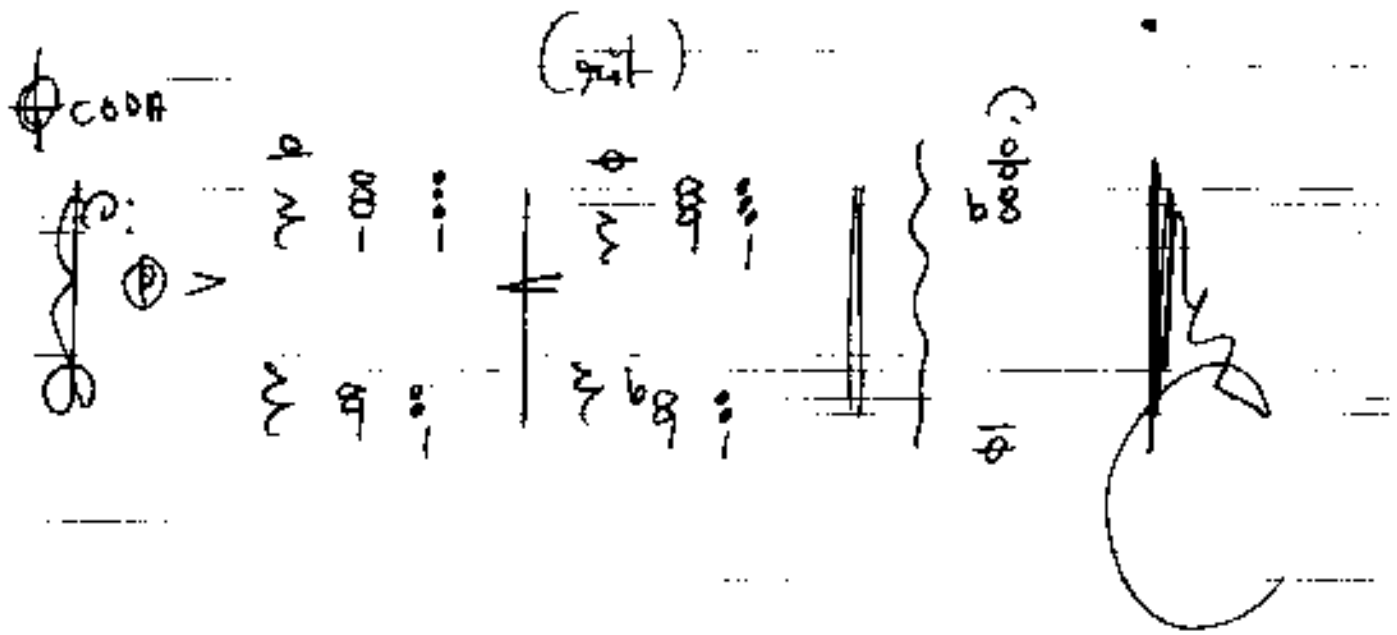
Handwritten musical notation for the second system. The top staff is in treble clef, key signature of one sharp, and 7/8 time. It contains several measures of beamed eighth notes and chords. A double bar line indicates a key signature change to two flats (Bb, Eb). The bottom staff is in bass clef, key signature of two flats, and 6/8 time.

Handwritten musical notation for the third system. The top staff is in treble clef, key signature of two flats, and 7/8 time. It contains several measures of beamed eighth notes and chords. A double bar line indicates a key signature change to one flat (Bb). The bottom staff is in bass clef, key signature of one flat, and 6/8 time.

(output)

for

D.C. al  
♩



Der Tod das Ende, was bewirkt den Anfang?  
 Löchelnd tragen wir die Bürde  
 leicht unseres Lebens. 3 Alles ist es vorbei!

Modi (brevi - appassionate)

Handwritten musical notation for the first system. It consists of three staves. The top staff is in treble clef and contains a series of notes with a slur. The middle staff is in bass clef and contains notes with a slur and a 'Ped.' marking. The bottom staff is in bass clef and contains notes with a slur and a 'Ped.' marking. The system is divided into three measures by vertical bar lines.

Handwritten musical notation for the second system. It consists of three staves. The top staff is in treble clef and contains notes with a slur. The middle staff is in bass clef and contains notes with a slur and a 'Ped.' marking. The bottom staff is in bass clef and contains notes with a slur and a 'Ped.' marking. The system is divided into three measures by vertical bar lines. The word "Sargun" is written in cursive below the second measure.

Handwritten musical notation for the third system. It consists of three staves. The top staff is in treble clef and contains notes with a slur. The middle staff is in bass clef and contains notes with a slur and a 'Ped.' marking. The bottom staff is in bass clef and contains notes with a slur and a 'Ped.' marking. The system is divided into three measures by vertical bar lines.

Handwritten musical notation for the fourth system. It consists of three staves. The top staff is in treble clef and contains notes with a slur. The middle staff is in bass clef and contains notes with a slur and a 'Ped.' marking. The bottom staff is in bass clef and contains notes with a slur and a 'Ped.' marking. The system is divided into three measures by vertical bar lines.

(poco rit)

(2te + die) + letzte

COBB

Handwritten musical score for the first system. The top staff is a vocal line in treble clef with a melodic line. The bottom staff is a piano accompaniment in bass clef with chords and arpeggios. The word "Ped." is written below the piano staff in two places, indicating pedaling. The tempo marking "(poco rit)" is at the top, and "(2te + die) + letzte" is written above the second measure. A circled "COBB" is at the top right.

Handwritten musical score for the second system. It continues the vocal and piano parts from the first system. The piano part includes a circled "Ped." marking.

(2te + poco rit)

Handwritten musical score for the third system. It continues the vocal and piano parts. The piano part includes a circled "Ped." marking.

Lento

Handwritten musical score for the fourth system, marked "Lento". The top staff is a vocal line starting with a circled "P". The bottom staff is a piano accompaniment with a circled "pp" marking. The system concludes with a circled "COBB" and a circled "Ad." marking.

*lento*  
 (dim > rit. ---)

$\Phi$  CODA

Ped.

pp