

Klavierauszug.

Konzert für
Oboe & Orchester

Adolf Scherbaum

Konzert für

OBOE 1969 6113 und Orchester

in 2 Teilen

(Sinfonieorchester
und Holzbläser)

von

Adolf Scherbaum)

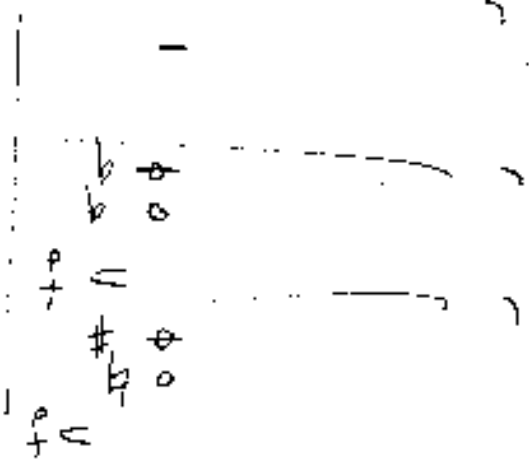
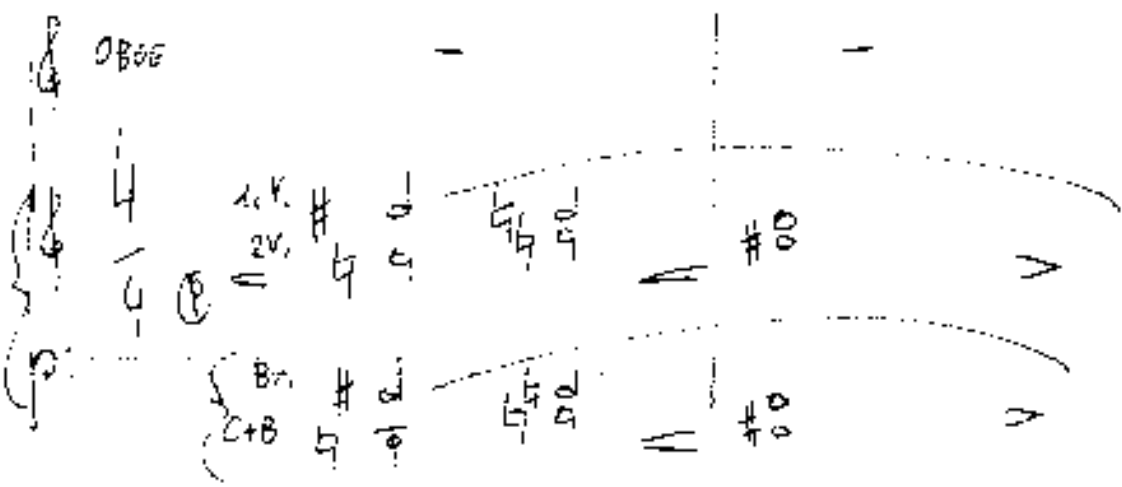
(Klavierauszug = Partitur)

Spieldauer = circa = 16 Min.

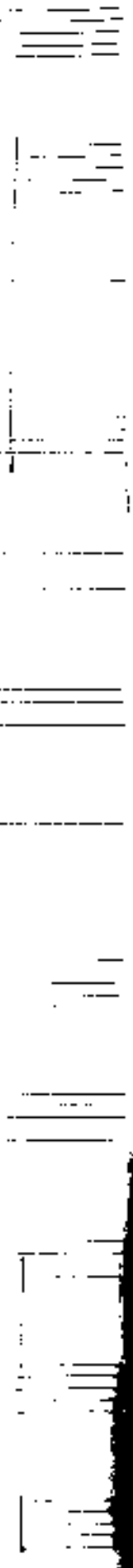
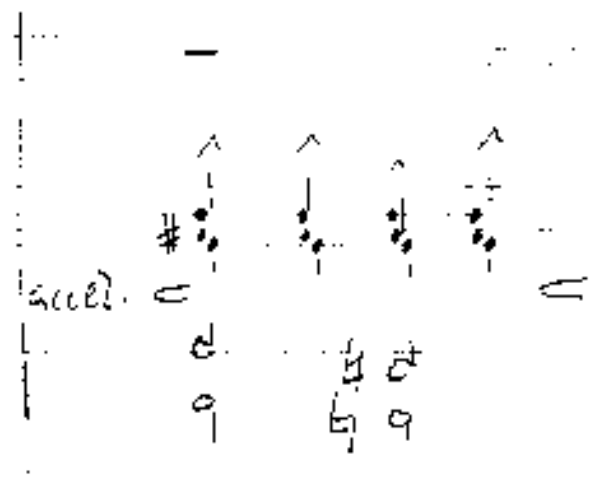
Hydraute

25-10-100

OB06



accel. →



1

accel. — cresc. — (poco rit.)

Handwritten musical notation for the first system. It features a treble clef staff with notes and accidentals (flats and sharps) and a bass clef staff with notes and accidentals. Some notes have accents (^). The notation is spread across several measures.

Handwritten musical notation for the second system. It features a treble clef staff with notes and accidentals (flats and sharps) and a bass clef staff with notes and accidentals. Some notes have accents (^). The notation is spread across several measures.

Handwritten musical notation for the third system. It features a treble clef staff with notes and accidentals (flats and sharps) and a bass clef staff with notes and accidentals. Some notes have accents (^). The notation is spread across several measures.

Handwritten musical notation for the fourth system. It features a treble clef staff with notes and accidentals (flats and sharps) and a bass clef staff with notes and accidentals. Some notes have accents (^). The notation is spread across several measures.

Handwritten musical notation for the fifth system. It features a treble clef staff with notes and accidentals (flats and sharps) and a bass clef staff with notes and accidentals. Some notes have accents (^). The notation is spread across several measures.

2

Handwritten musical notation for the first system. It features a treble clef and a key signature of one sharp (F#). The notation includes a melodic line with notes and rests, and a bass line with notes and rests. There are some annotations and markings throughout the system.

Handwritten musical notation for the second system. It features a treble clef and a key signature of one sharp (F#). The notation includes a melodic line with notes and rests, and a bass line with notes and rests. There are some annotations and markings throughout the system.

Handwritten musical notation for the third system. It features a treble clef and a key signature of one sharp (F#). The notation includes a melodic line with notes and rests, and a bass line with notes and rests. There are some annotations and markings throughout the system.

Handwritten musical notation for the first system. It features a treble clef and a key signature of one sharp (F#). The main melodic line includes a triplet of eighth notes. Below the staff, there are two bass clefs with rhythmic markings: '4|||c.' and '4|||a.'.

Handwritten musical notation for the second system. It features a treble clef and a key signature of one sharp (F#). The melodic line ends with a circled '3'. The text "(poco rit ...)" is written above the staff.

3

Tempo \square

Handwritten musical notation for the third system. It features a treble clef and a key signature of one sharp (F#). The melodic line is complex, with a circled '3' and a '3' below it. A bass clef with a circled '3' is also present.

Handwritten musical notation for the first system. It features a treble clef, a key signature of one sharp (F#), and a 3/4 time signature. The notation includes a melody line with slurs and a bass line with chords and a triplet of eighth notes.

Handwritten musical notation for the second system. It continues the melody and bass line from the first system. It includes a treble clef, a key signature of one sharp, and a 3/4 time signature.

Handwritten musical notation for the third system, concluding the piece. It includes a treble clef, a key signature of one sharp, and a 3/4 time signature. The notation includes a melody line with slurs and a bass line with chords and a triplet of eighth notes.

4

Good for me

Handwritten musical notation for the first system. It features a treble clef and a key signature of one sharp (F#). The notation includes several measures with notes, rests, and dynamic markings. There are also some handwritten annotations and arrows pointing to specific parts of the score.

Strongly

Handwritten musical notation for the second system. It features a treble clef and a key signature of one sharp (F#). The notation includes several measures with notes, rests, and dynamic markings. There are also some handwritten annotations and arrows pointing to specific parts of the score.

Handwritten musical notation for the third system. It features a treble clef and a key signature of one sharp (F#). The notation includes several measures with notes, rests, and dynamic markings. There are also some handwritten annotations and arrows pointing to specific parts of the score.

CT

amer.

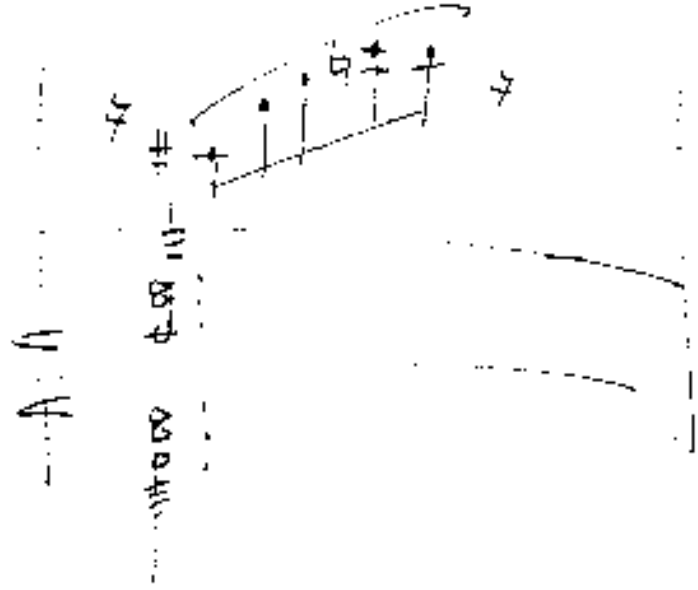
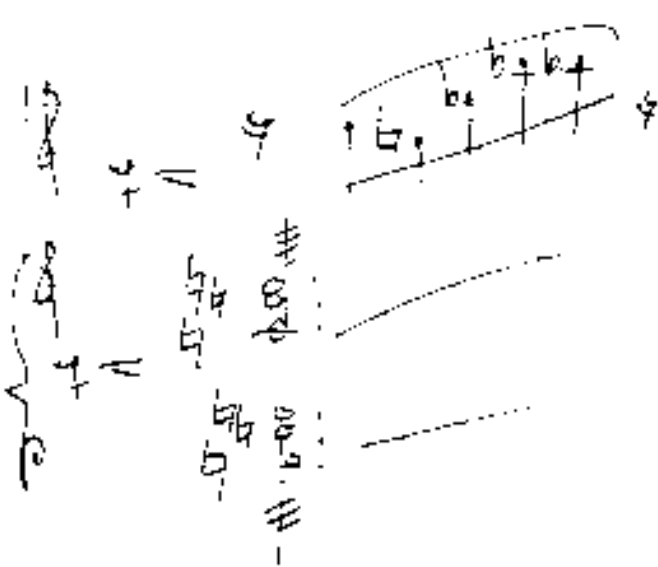
Handwritten musical notation for the first system. It features a treble clef, a key signature of one sharp (F#), and a melodic line with notes and rests. The notes are written on a five-line staff.

(5)

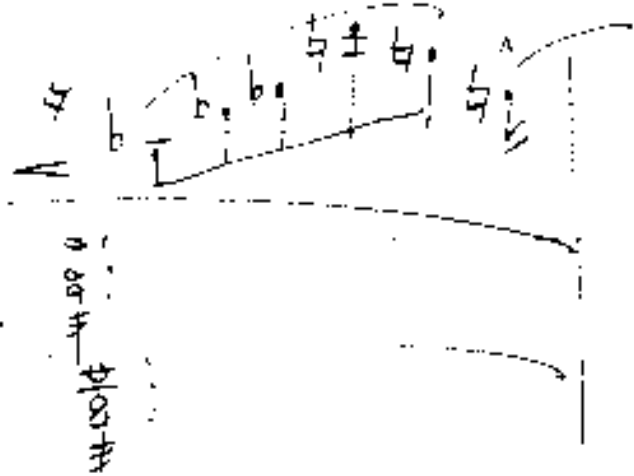
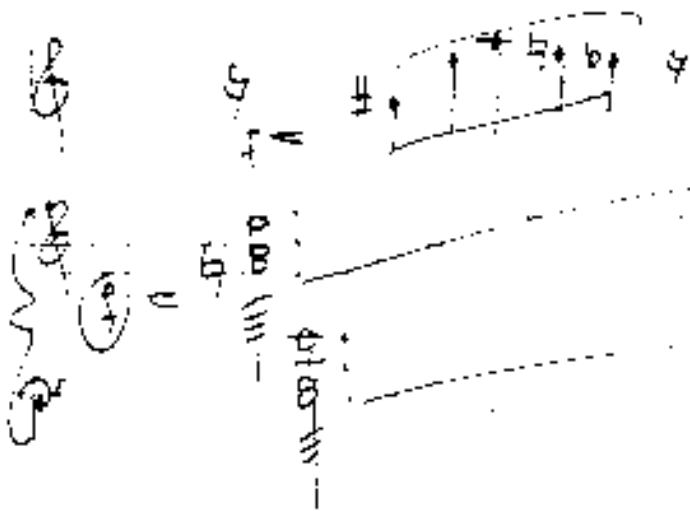
Handwritten musical notation for the second system. It features a treble clef, a key signature of one sharp (F#), and a melodic line with notes and rests. The notes are written on a five-line staff.

adiv concepte (N)

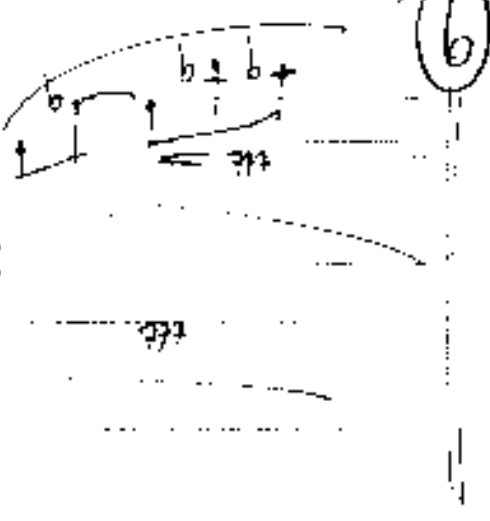
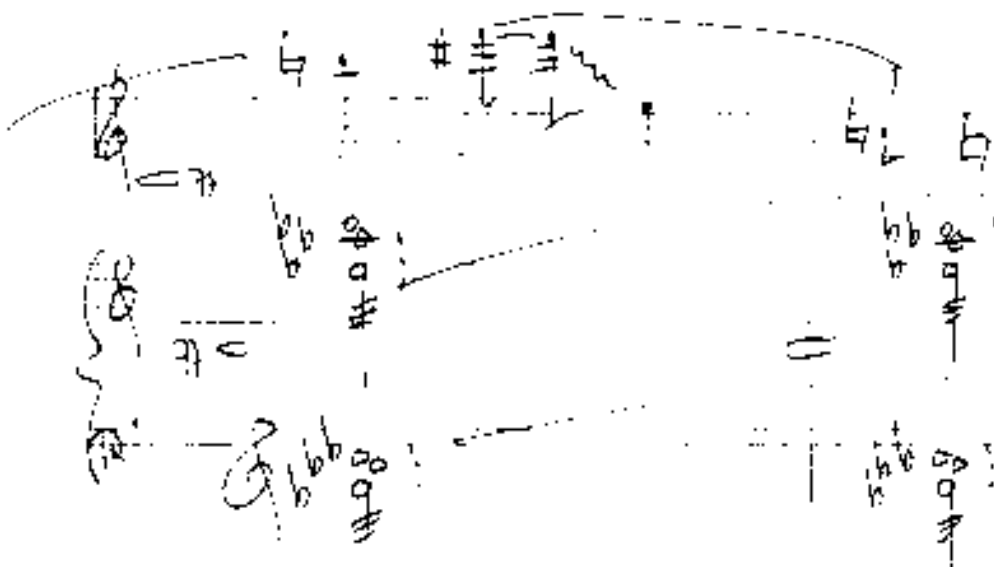
Handwritten musical notation for the third system. It features a treble clef, a key signature of one sharp (F#), and a melodic line with notes and rests. The notes are written on a five-line staff.



mod (accel) + cresc →



(poco rit)



6

oder breit (♩) $\frac{7}{4}$ Helgis

großes rit und dann

(passante)

(groß. rit - dann)

solus pentatonic (Adagio)

Handwritten musical notation for the first system. It includes a treble clef, a circled 'p' dynamic marking, and a melodic line with a slur. Below the staff are two guitar chord diagrams: the first is a D major chord (x02321) and the second is a G major chord (x02020).

(poco rit) - 8

Handwritten musical notation for the second system. It includes a treble clef and a melodic line with a slur. Below the staff are two guitar chord diagrams: the first is a D major chord (x02321) and the second is a G major chord (x02020).

solus free (pentatonic)

Handwritten musical notation for the third system. It includes a treble clef, a circled 'p' dynamic marking, and a melodic line with a slur. Below the staff are two guitar chord diagrams: the first is a D major chord (x02321) and the second is a G major chord (x02020).

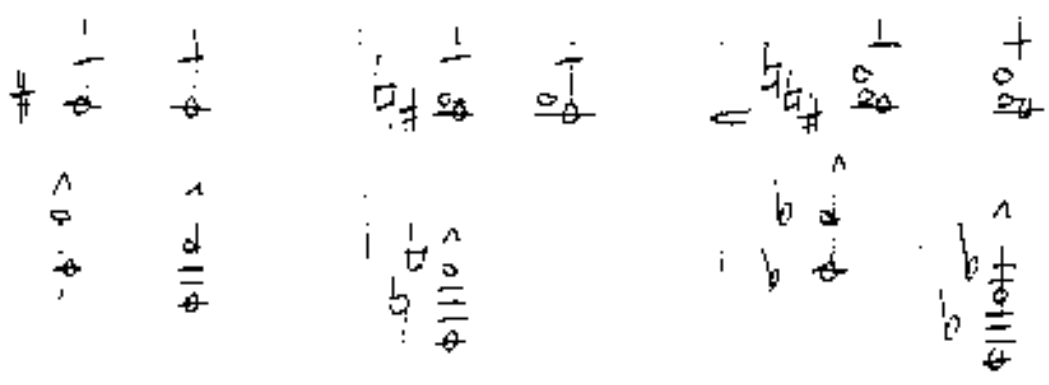
Diapason suscitato

Handwritten musical notation for the first system. It features a treble clef, a key signature of one sharp (F#), and a 4/4 time signature. The notation includes a melodic line with a wavy line and a bass line with chords.

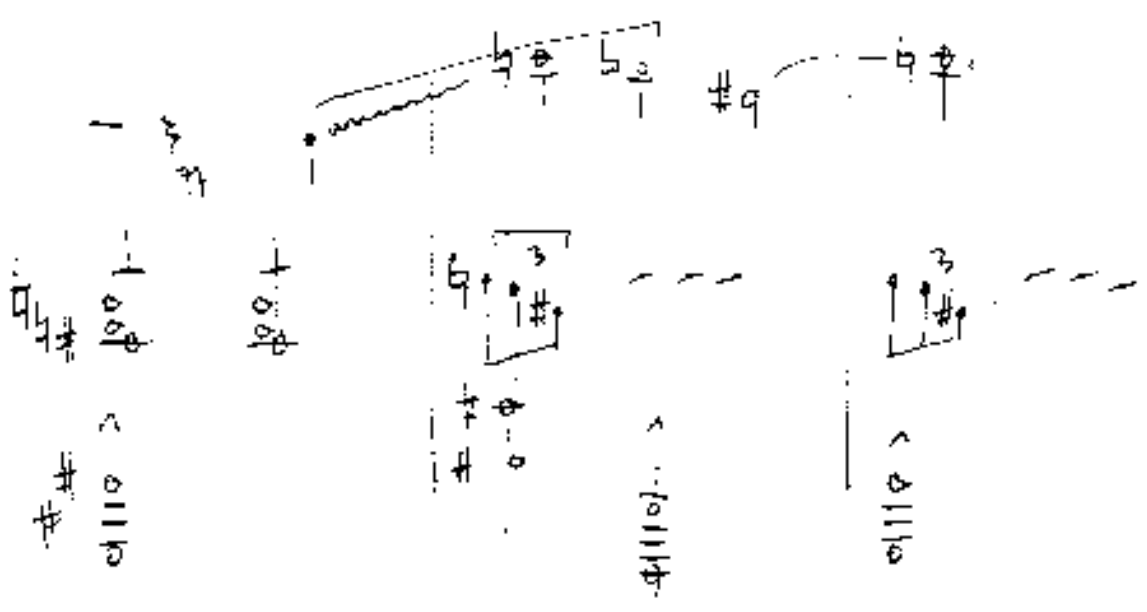
Handwritten musical notation for the second system, continuing the piece with similar notation to the first system.

Handwritten musical notation for the third system, showing further development of the musical theme.

Ans



10



dim (poco rit)

11

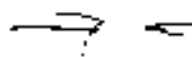
Handwritten musical notation for the first system. It features a treble clef and a key signature of one flat (B-flat). The notation includes several measures with notes, rests, and dynamic markings such as \hat{p} and \hat{f} . A dashed line indicates a continuation or a specific phrasing. The notes are written in a cursive, handwritten style.

meno

Handwritten musical notation for the second system. It features a treble clef and a key signature of one flat. The notation includes several measures with notes, rests, and dynamic markings such as \hat{p} and \hat{f} . A dashed line indicates a continuation or a specific phrasing. The notes are written in a cursive, handwritten style.

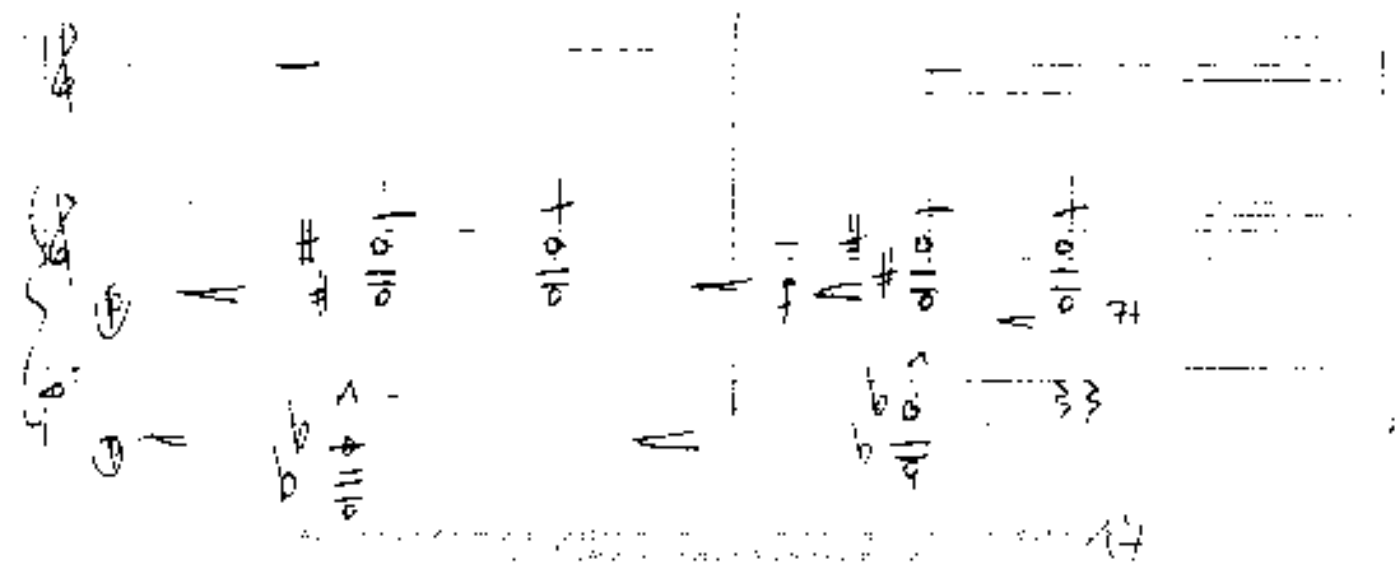
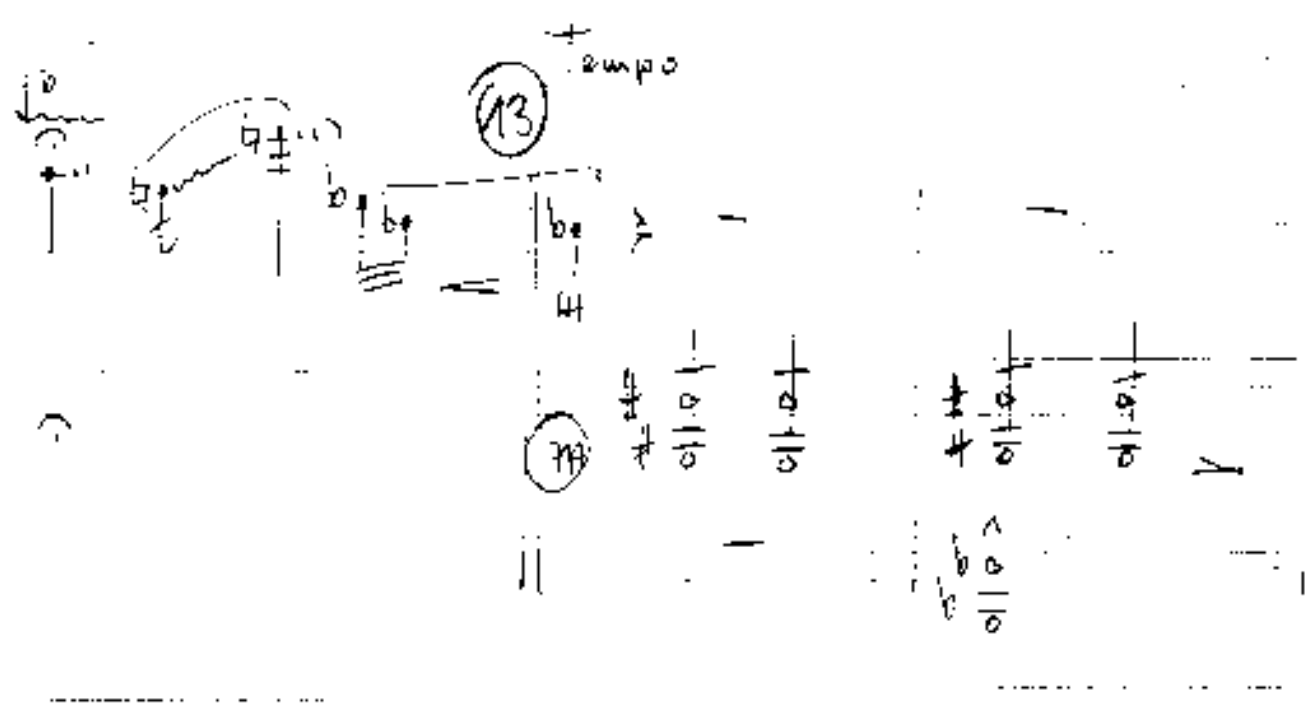
Handwritten musical notation for the third system. It features a treble clef and a key signature of one flat. The notation includes several measures with notes, rests, and dynamic markings such as \hat{p} and \hat{f} . A dashed line indicates a continuation or a specific phrasing. The notes are written in a cursive, handwritten style.

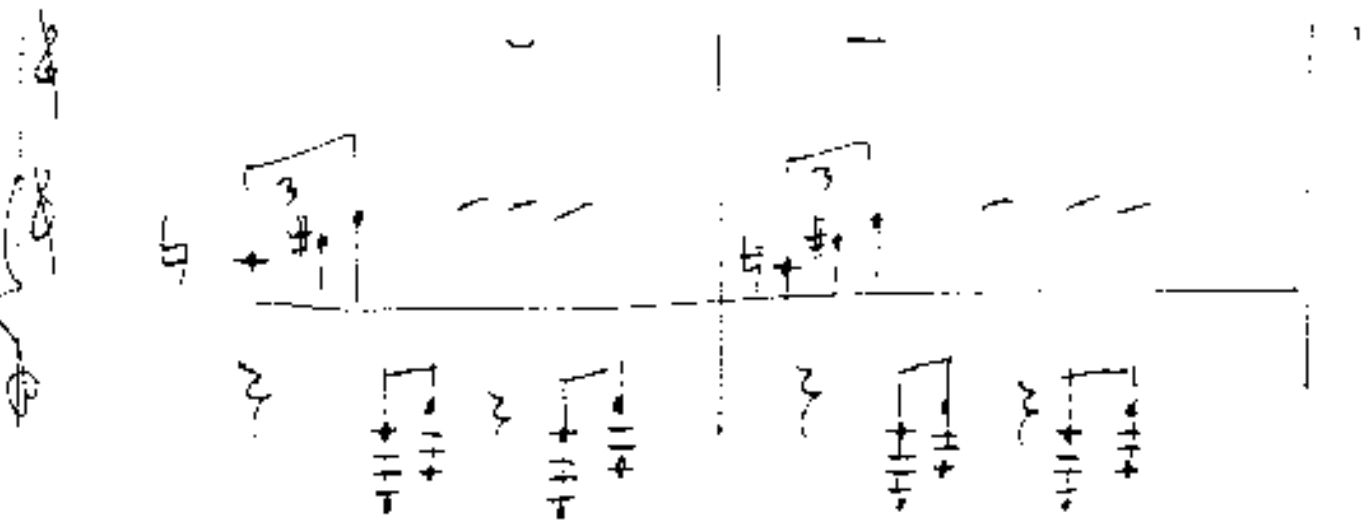
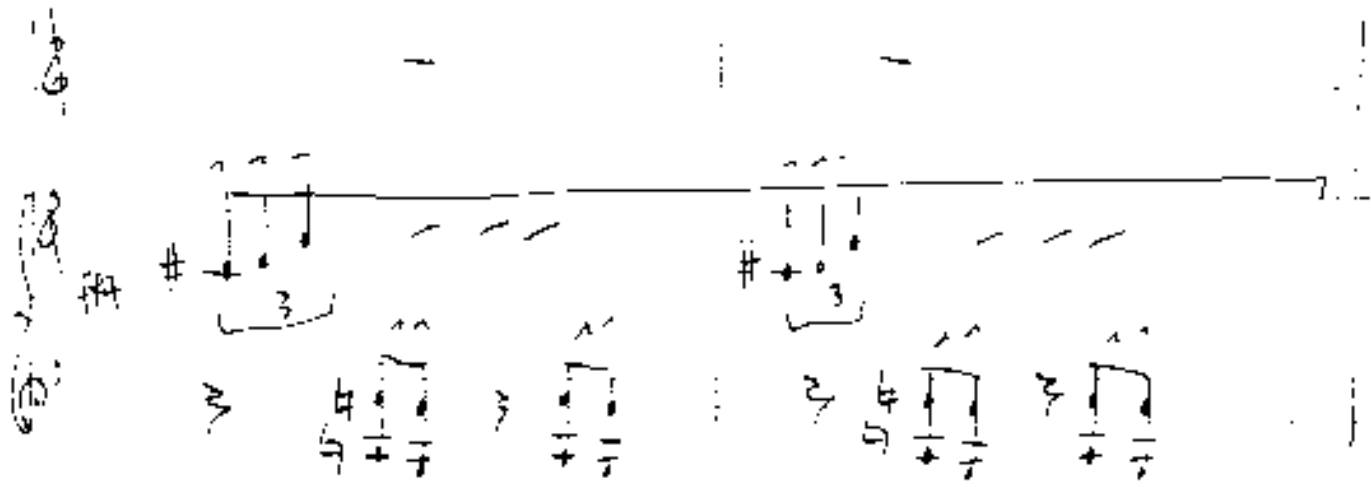
in das Tempo $\boxed{1}$ übergehen



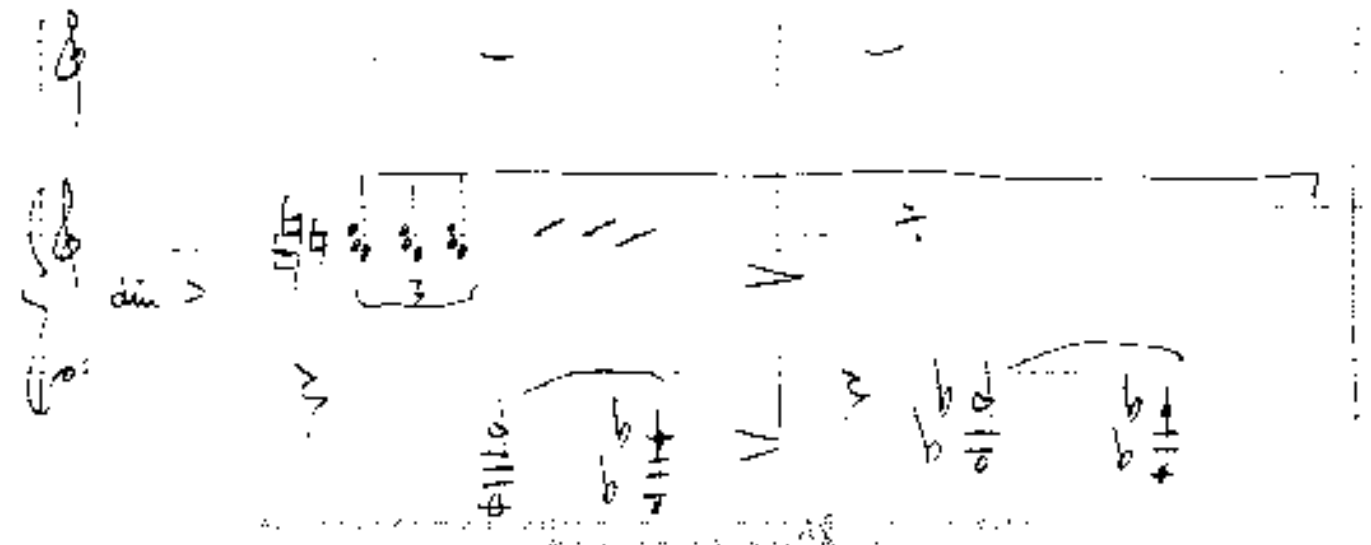
12

Tempo $\boxed{1}$





diagram

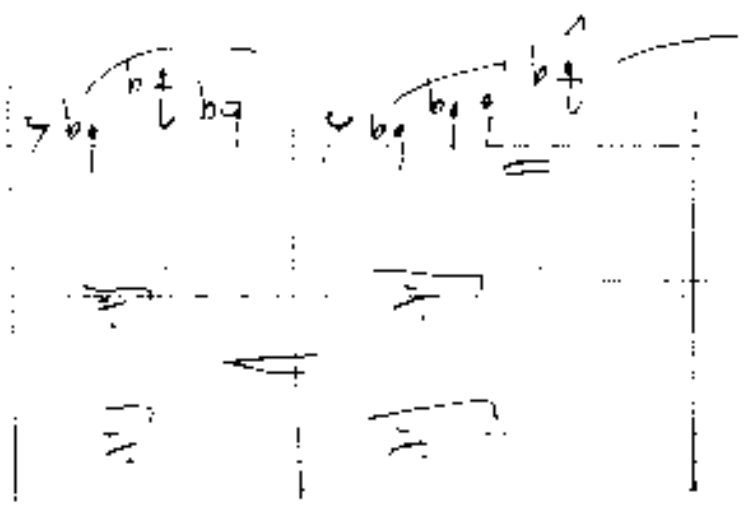
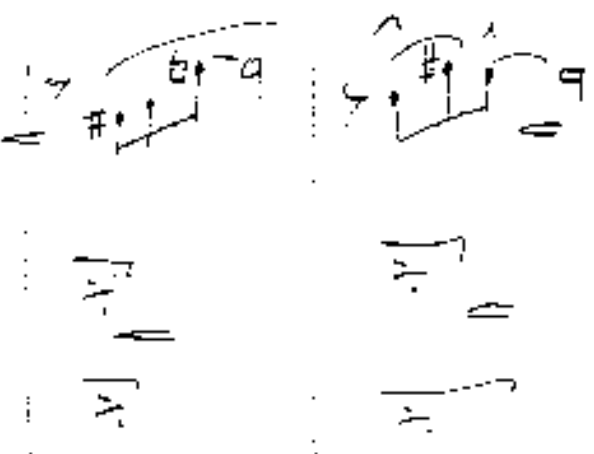
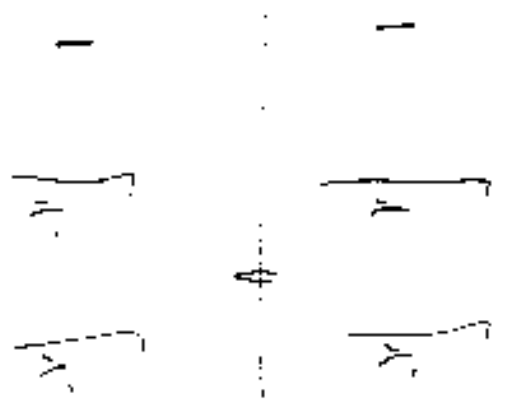
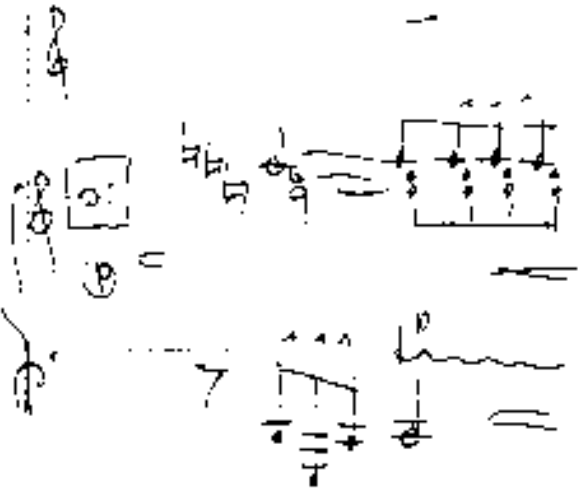


14

15

sempre uncinato

16



großes mit

breite (pesante)

(steigend)

Tempo steigen!

größer mit!

Handwritten musical notation for the first system. It features a treble clef on the left and a bass clef on the right. The notation includes various notes, rests, and dynamic markings such as accents (>) and slurs. The music is written on a five-line staff.

17

Handwritten musical notation for the second system. It features a treble clef on the left and a bass clef on the right. The notation includes various notes, rests, and dynamic markings such as accents (>) and slurs. The music is written on a five-line staff.

sehr ruhige (Achtel)

Handwritten musical notation for the third system. It features a treble clef on the left and a bass clef on the right. The notation includes various notes, rests, and dynamic markings such as accents (>) and slurs. The music is written on a five-line staff.

Handwritten musical notation on page 18, featuring a treble clef and a key signature of one sharp (F#). The notation includes a melodic line with notes G, A, B, C, D, E, F#, and G, and a corresponding piano accompaniment with chords and rhythmic patterns. The page is numbered '18' in a circle on the right side.

(poco rit...)

Handwritten musical notation on page 19, continuing the piece with a treble clef and a key signature of one sharp. The notation includes a melodic line with notes G, A, B, C, D, E, F#, and G, and a corresponding piano accompaniment with chords and rhythmic patterns. The page is numbered '19' in a circle on the right side.

Handwritten musical notation on page 23, featuring a treble clef and a key signature of one sharp. The notation includes a melodic line with notes G, A, B, C, D, E, F#, and G, and a corresponding piano accompaniment with chords and rhythmic patterns. The page is numbered '23' at the bottom center.

(poco rit. -----)

Handwritten musical score for two systems. The top system shows a melodic line with a fermata and a dynamic marking 'pp'. The bottom system shows a bass line with notes and accidentals. A dashed line indicates a tempo change to 'poco rit.'

ins Tempo [1] intergelen (accel. + cresc.)

Handwritten musical score for two systems. The top system shows a melodic line with a fermata and a dynamic marking 'pp'. The bottom system shows a bass line with notes and accidentals. A dashed line indicates a tempo change to 'ins Tempo'.

accel.

Handwritten musical score for two systems. The top system shows a melodic line with a fermata and a dynamic marking 'pp'. The bottom system shows a bass line with notes and accidentals. A dashed line indicates a tempo change to 'ins Tempo'.



Tempo 2

Handwritten musical notation for the first system, including a treble clef, a key signature of one sharp (F#), and a 2/4 time signature. The notation consists of two staves with various notes, rests, and dynamic markings.

Handwritten musical notation for the second system, continuing the piece with similar notation and a key signature of one sharp.

Handwritten musical notation for the third system, including a treble clef, a key signature of one sharp, and a 2/4 time signature. The notation features various notes and rests.

Handwritten musical notation in a staff with a treble clef. The notes are: $\sharp C$, $\sharp D$, $\sharp E$, $\sharp F$, $\sharp G$, $\sharp A$, $\sharp B$. There are some additional markings below the staff, including a circled '20' and some symbols like \sharp and \flat .

(poco rit...)

20

meno

Handwritten musical notation in a staff with a treble clef. The notes are: $\sharp C$, $\sharp D$, $\sharp E$, $\sharp F$, $\sharp G$, $\sharp A$, $\sharp B$. There are some additional markings below the staff, including a circled '20' and some symbols like \sharp and \flat .

(poco rit...)

Handwritten musical notation in a staff with a treble clef. The notes are: $\sharp C$, $\sharp D$, $\sharp E$, $\sharp F$, $\sharp G$, $\sharp A$, $\sharp B$. There are some additional markings below the staff, including a circled '20' and some symbols like \sharp and \flat .

21 in das Tempo 1 übergeben

22

27

Tempo ↑

Handwritten musical notation for the first system, featuring a treble clef, a key signature of one sharp (F#), and a tempo marking "Tempo ↑". The notation includes a melodic line with a slur and a fermata, and a bass line with a triplet of eighth notes marked with an accent (>).

Handwritten musical notation for the second system, continuing the piece with a treble clef and a key signature of one sharp. It features a melodic line with a slur and a fermata, and a bass line with a triplet of eighth notes marked with an accent (>).

fin

Handwritten musical notation for the third system, concluding the piece with a treble clef and a key signature of one sharp. The notation includes a melodic line with a slur and a fermata, and a bass line with a triplet of eighth notes marked with an accent (>).

23

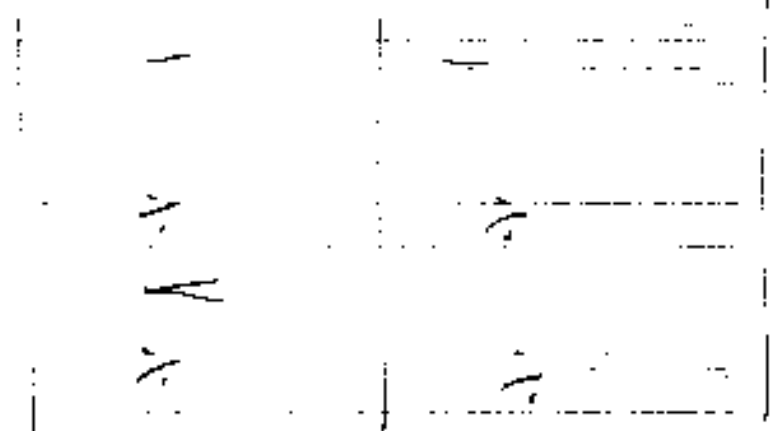
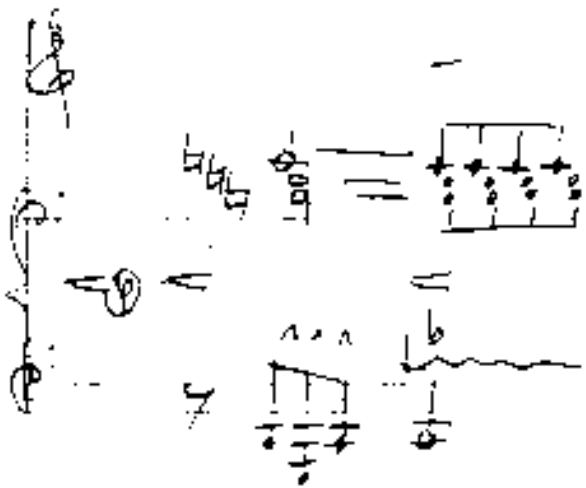
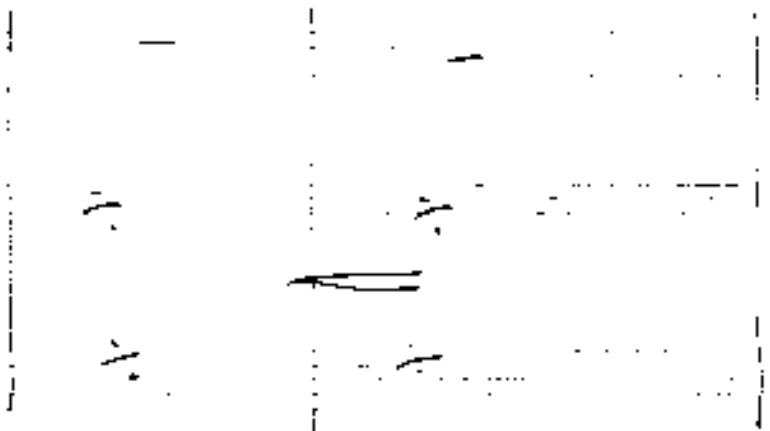
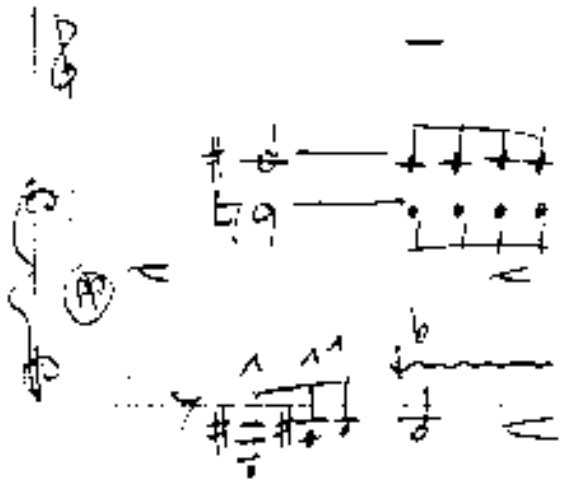
Tempo 2

Handwritten musical notation for the first system. It includes a treble clef, a key signature of one flat (B-flat), and a 3/4 time signature. The notation shows a melodic line with a triplet of eighth notes and a bass line with a triplet of eighth notes. The word "dim" is written above the first measure.

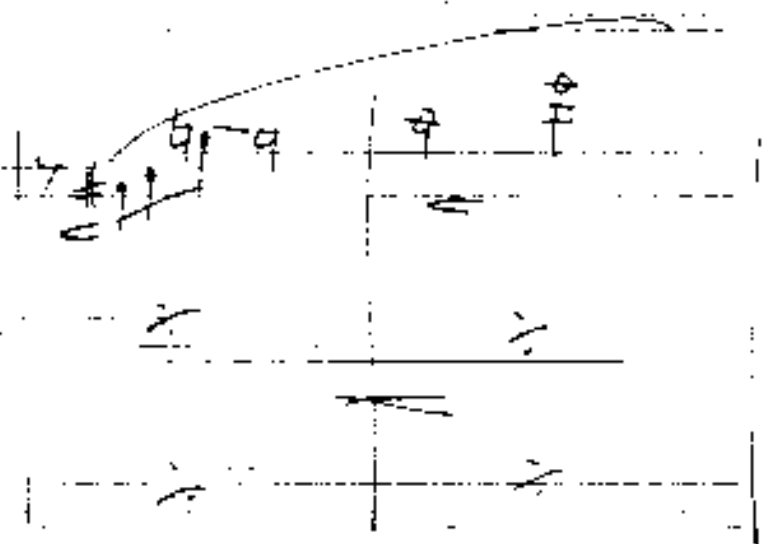
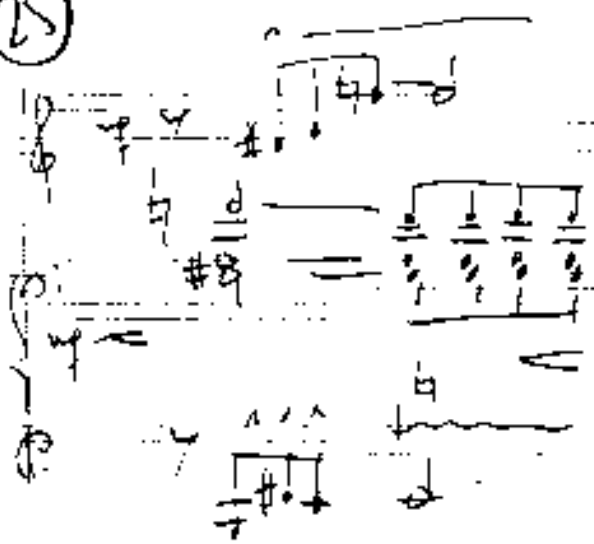
Handwritten musical notation for the second system. It includes a treble clef, a key signature of one flat (B-flat), and a 3/4 time signature. The notation shows a melodic line with a triplet of eighth notes and a bass line with a triplet of eighth notes. A circled "2" is written above the first measure.

Handwritten musical notation for the third system. It includes a treble clef, a key signature of one flat (B-flat), and a 3/4 time signature. The notation shows a melodic line with a triplet of eighth notes and a bass line with a triplet of eighth notes. A circled "2" is written above the first measure.

Diagrama circuit. →



(25)



Handwritten musical notation for the first system. It consists of three staves. The top staff has a treble clef and a key signature of one flat (B-flat). The middle staff has a bass clef and a key signature of one flat. The bottom staff has a bass clef and a key signature of one flat. There are chord diagrams and melodic lines with notes and accidentals.

Großes mit...

26

Handwritten musical notation for the second system. It consists of three staves. The top staff has a treble clef and a key signature of one flat. The middle staff has a bass clef and a key signature of one flat. The bottom staff has a bass clef and a key signature of one flat. There are chord diagrams and melodic lines with notes and accidentals.

breve (4/8 pesada)

Handwritten musical notation for the first system, labeled "breve (4/8 pesada)". It features a treble clef, a key signature of one sharp (F#), and a 4/8 time signature. The notation includes a series of notes with stems and beams, some with accents, and a circled "1111" in the first measure. The bottom staff shows a bass clef with a few notes and a sharp sign.

Tempo →

Handwritten musical notation for the second system, labeled "Tempo →". It features a treble clef, a key signature of one sharp (F#), and a 4/8 time signature. The notation includes a series of notes with stems and beams, some with accents, and a circled "1111" in the first measure. The bottom staff shows a bass clef with a few notes and a sharp sign.

Tempo →

Handwritten musical notation for the third system, labeled "Tempo →". It features a treble clef, a key signature of one sharp (F#), and a 4/8 time signature. The notation includes a series of notes with stems and beams, some with accents, and a circled "1111" in the first measure. The bottom staff shows a bass clef with a few notes and a sharp sign.

Handwritten musical score for two systems. The first system features a treble clef with notes G4, A4, B4, C5, and a fermata over C5. The second system features a bass clef with notes G3, A3, B3, C4, D4, E4, F4, G4, A4, B4, C5, and a fermata over C5. Dynamics include *p*, *#p*, and *pp*.

(poco rit. ...)

28

Handwritten musical score for two systems. The first system features a treble clef with notes G4, A4, B4, C5, and a fermata over C5. The second system features a bass clef with notes G3, A3, B3, C4, D4, E4, F4, G4, A4, B4, C5, and a fermata over C5. Dynamics include *p* and *pp*.

cello part

Handwritten musical score for the first system. The top staff is the cello part, starting with a treble clef and a key signature of one sharp (F#). It begins with a whole note chord (F#, C, G) and a melodic line. The piano accompaniment consists of two staves: the right hand has a treble clef and a key signature of one sharp, playing a rhythmic pattern of eighth notes; the left hand has a bass clef and a key signature of one sharp, playing a simple bass line. A fermata is placed over the first measure of the cello part.

Handwritten musical score for the second system. The cello part continues with a melodic line that includes a trill-like figure. The piano accompaniment continues with the same rhythmic patterns. The right hand of the piano part has a key signature change to two flats (Bb, Eb) in the second measure. A fermata is placed over the final measure of the cello part.

(poco rit.)

29

Handwritten musical score for measures 27-29. The top staff is in treble clef with a circled 'p' and a circled '77'. The middle staff is in bass clef with a circled '77'. The bottom staff is in bass clef. Dynamics include 'p' and 'pp'.

Handwritten musical score for measures 30-32. The top staff is in treble clef with dynamics 'f' and 'fp'. The middle staff is in bass clef with dynamics 'f' and 'fp'. The bottom staff is in bass clef.

Handwritten musical score for measures 33-35. The top staff is in treble clef with dynamics 'f' and 'fp'. The middle staff is in bass clef with dynamics 'f' and 'fp'. The bottom staff is in bass clef.

Handwritten musical score for measures 36-38. The top staff is in treble clef with a circled 'fp' and dynamics 'f' and 'fp'. The middle staff is in bass clef with dynamics 'f' and 'fp'. The bottom staff is in bass clef.

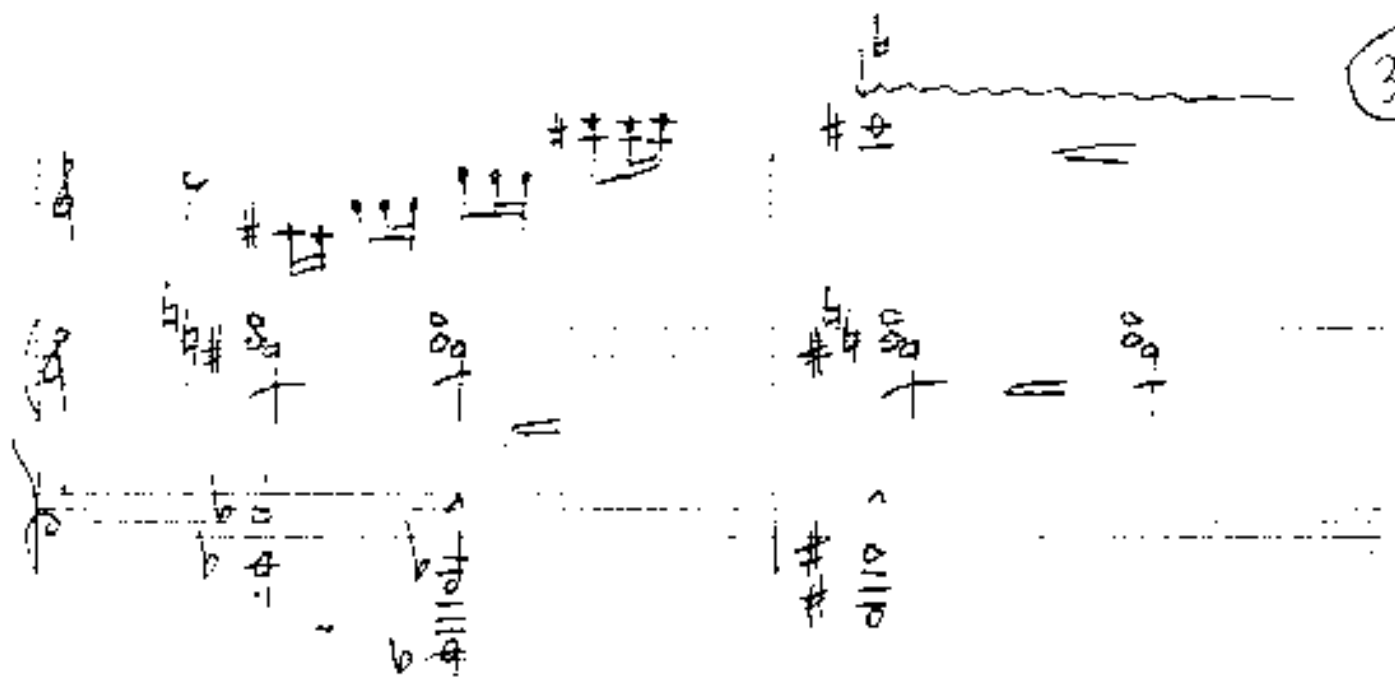
Handwritten musical score for measures 39-41. The top staff is in treble clef with dynamics 'f' and 'fp'. The middle staff is in bass clef with dynamics 'f' and 'fp'. The bottom staff is in bass clef. A circled '30' is at the end.

Presio

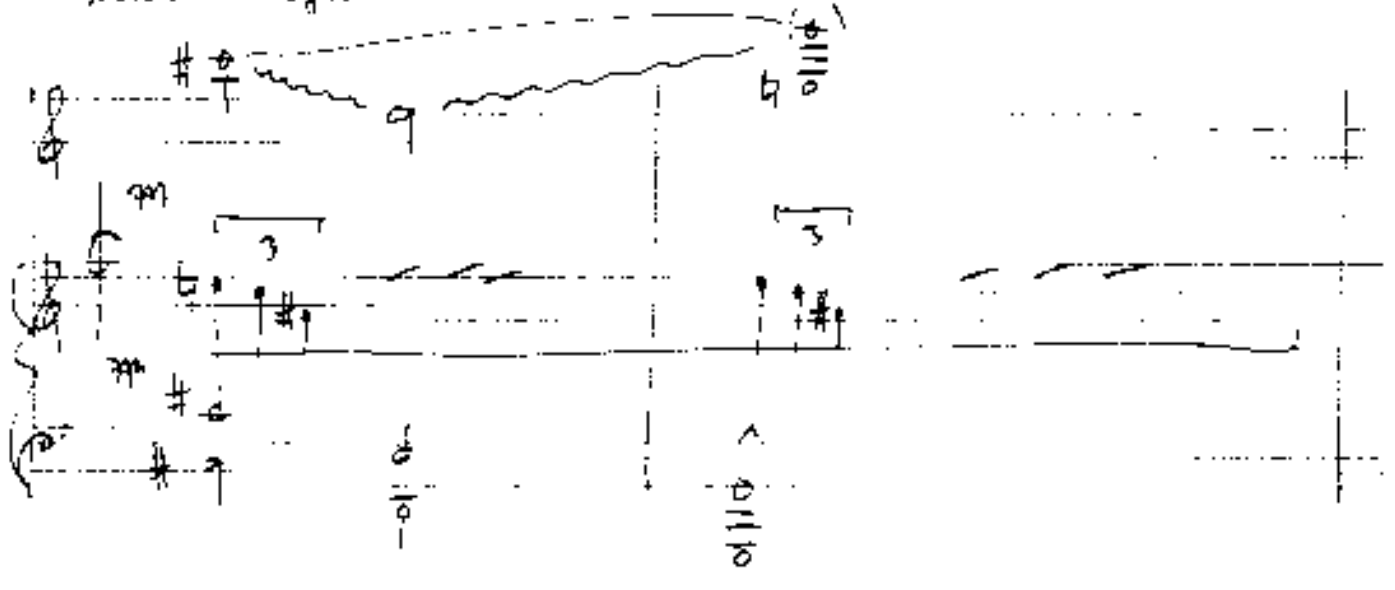
Handwritten musical notation for the first system. It features a treble clef and a key signature of one sharp (F#). The notation includes several notes, rests, and dynamic markings. A prominent marking is "p" (piano), and another is "dub" with a wavy line underneath. There are also some handwritten annotations on the left side, possibly indicating fingerings or breath marks.

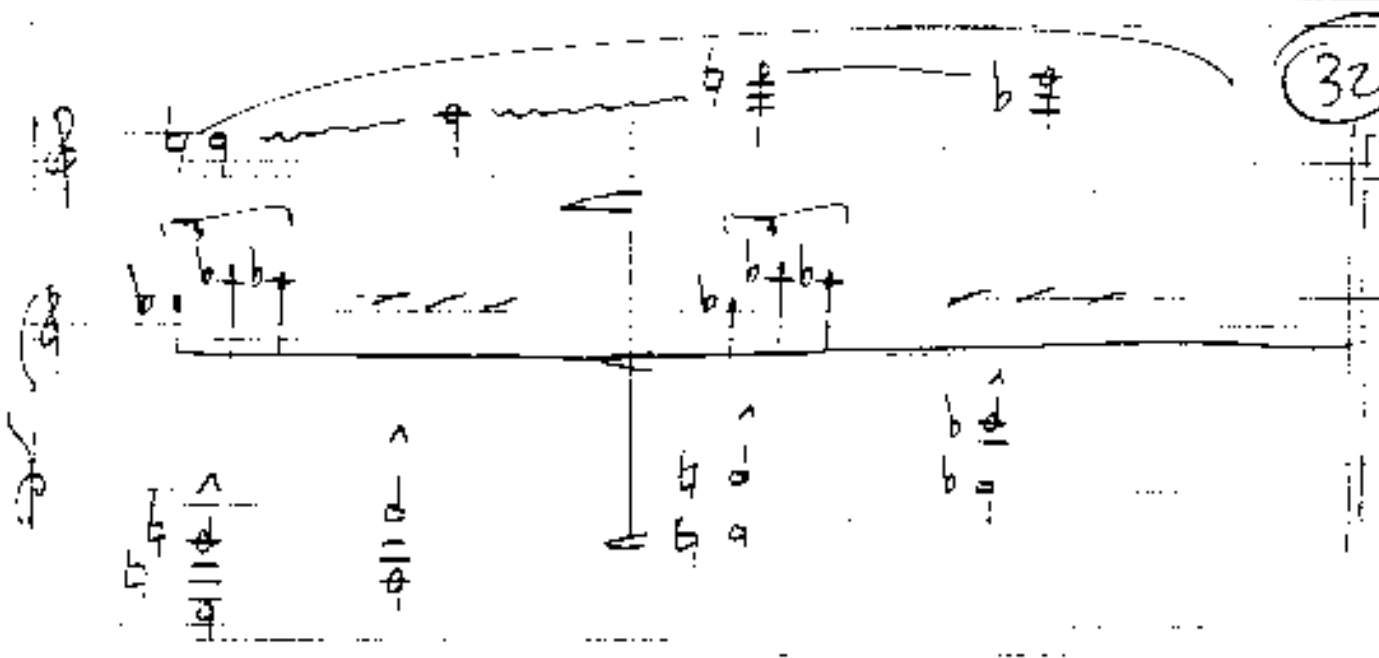
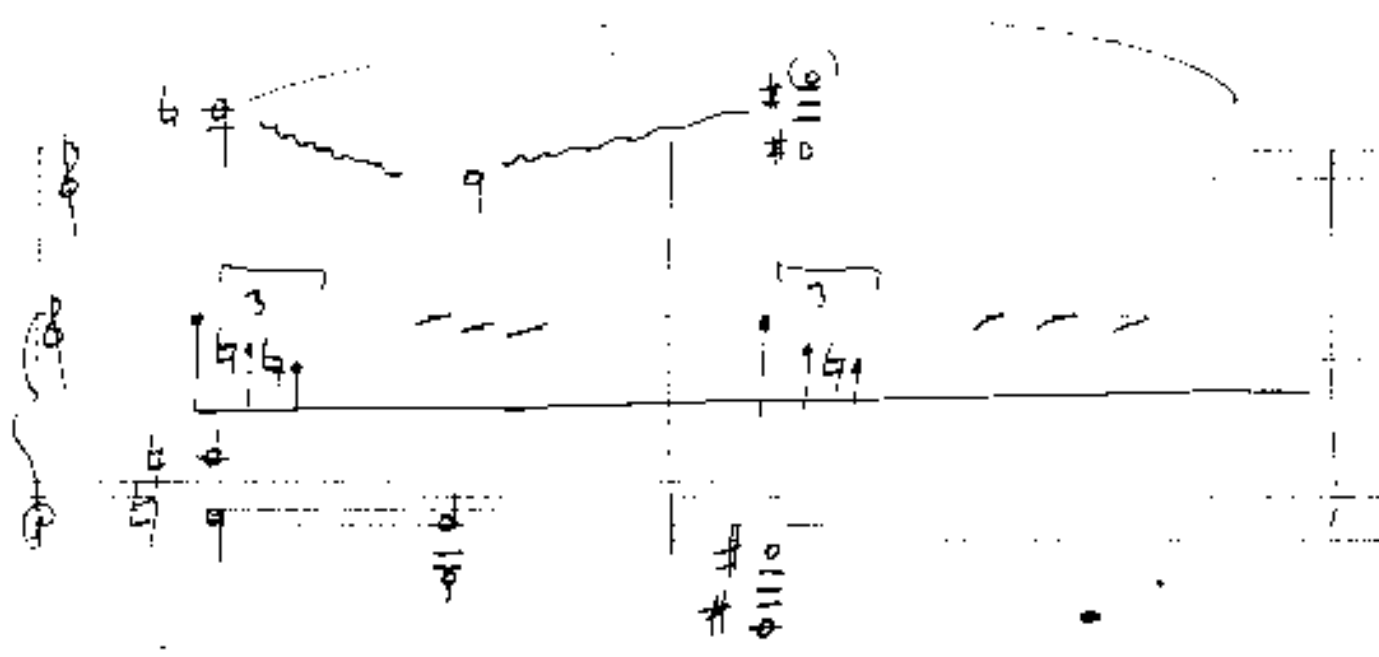
Handwritten musical notation for the second system. It continues the piece with similar notation, including a treble clef and a key signature of one sharp (F#). The notation includes notes, rests, and dynamic markings. There are also some handwritten annotations on the left side, possibly indicating fingerings or breath marks.

The image shows two systems of handwritten musical notation. Each system consists of a vocal line (top) and a piano accompaniment (bottom).
 - **System 1 (left):** The vocal line starts with a treble clef and a key signature of one sharp (F#). It contains several measures of music with notes and rests. The piano accompaniment is written in a lower register, also with a treble clef, and includes some shaded areas. Dynamic markings 'p' and 'f' are present.
 - **System 2 (right):** Similar to the first system, it features a vocal line and piano accompaniment. The piano part has a prominent bass line with notes like 'f' and 'b'. Dynamic markings 'p' and 'f' are also visible.



no hand wie möglich





1769

Line



[Handwritten signature or scribble]