

**Notenheft**

Kontraste

Musik für 2 Soloinstrumente

1969 ADOLF SCHERBAUM -

in (fünf) Teilen über ungarische  
Volkslieder

(Flöte und Harfe)

(Herrn Gilge) Flöte -

freundlichst  
geschrieben -

Linz April 1969

Adolf Scherbaum

Teil I.

gang frei (mit pulsator)

Flöte

Harfe

Handwritten musical score for Flute and Harp, measures 1-2. The Flute part starts with a circled 'p' and a slur over a triplet of eighth notes. The Harp part has a circled 'p' and a series of chords. Dynamics include 'p' and 'pp'. A circled '1' is at the end of the first measure.

Handwritten musical score for Flute and Harp, measures 3-4. The Flute part continues with a slur and a circled 'f'. The Harp part has a circled 'f' and continues with chords. Dynamics include 'f' and 'pp'. A circled '2' is at the end of the second measure.

Handwritten musical score for system 3, consisting of two staves. The top staff is in treble clef and the bottom staff is in bass clef. The music is written in a key with two sharps (F# and C#) and a common time signature (C). The notation includes various notes, rests, and dynamic markings such as *pp*. There are several circled annotations: a circled '3' at the end of the system, a circled 'f' in the bass staff, a circled 'K' in the bass staff, and a circled 'H' in the bass staff. A circled '5 3 0' is written above a note in the treble staff. The system concludes with a double bar line.

Handwritten musical score for system 4, consisting of two staves. The top staff is in treble clef and the bottom staff is in bass clef. The music is written in a key with two sharps (F# and C#) and a common time signature (C). The notation includes various notes, rests, and dynamic markings such as *f*. There are several circled annotations: a circled '4' at the end of the system, a circled 'f' in the bass staff, and a circled 'H' in the bass staff. The system concludes with a double bar line.

Four sets of empty musical staves, each consisting of a treble clef staff and a bass clef staff, arranged vertically.

5

*mf*

*Andr.*

6

*sehr breit*

*pp*

*pp*

*pp*

*breit*

ff

f

ff

f

7

*solo quickly*

p

p

p

p

8

*poeten  
sachen  
unblöhen*

8 (allegro) 9

Handwritten musical score for measures 8 and 9. Measure 8 is marked "allegro". Measure 9 is marked "f" and contains a dense chromatic scale. The score includes a treble clef, a piano (p) dynamic, and a fermata over the end of measure 9. The bass staff shows a sequence of chords.

10

*Vivace*

Handwritten musical score for measure 10, marked "Vivace". The score features a treble clef, a piano (p) dynamic, and a fermata. The melody is marked with accents and slurs. The bass staff shows a sequence of chords.

Four sets of empty musical staves for practice or continuation of the piece.

Handwritten musical score for measures 11 and 12. The system consists of two staves. The top staff is in treble clef, and the bottom staff is in bass clef. Measure 11 contains a melodic line starting with a circled 'p' and a fermata. Measure 12 features a 'gliss.' (glissando) indicated by a dashed line and an arrow, with a circled 'ppp' dynamic marking. A circled 'C#11' is written above the staff in measure 12. A circled '11' is in the top right corner.

Handwritten musical score for measures 13 and 14. The system consists of two staves. The top staff is in treble clef, and the bottom staff is in bass clef. The word 'breit' is written above the first staff. Measure 13 contains a melodic line with a circled 'p' and a fermata. Measure 14 features a 'gliss.' (glissando) indicated by a dashed line and an arrow, with a circled 'ppp' dynamic marking. A circled 'C#11' is written above the staff in measure 14. A circled '13' is in the top right corner.



12 (solo marking) frei

13

Handwritten musical score for measures 12-13. Measure 12 features a vocal line with a melodic line and piano accompaniment. Measure 13 continues the vocal line with a fermata and piano accompaniment. Dynamics include pp and p. The tempo is marked 'frei'.

(sang frei) ruhig ausatmen

Solo

Handwritten musical score for measure 14. The vocal line is marked 'Sang frei' and 'ruhig ausatmen'. The piano accompaniment is marked 'pp' and 'p'. The tempo is marked 'langsam'.

sehr langsam

# Teil II.

breit Moderato tranquillo 1 = 66

SEHR BREIT

ff

breit

2

3

breit

4

*breit* (5)

Handwritten musical score for system 5. The top staff contains chords with accents (^) and a circled 5. The middle and bottom staves show piano accompaniment with slurs and the number 4.

Handwritten musical score for system 6. The top staff has chords with a circled 6 and a circled 5. The middle and bottom staves show piano accompaniment with slurs and the number 4.

(6)

*dieu est...*

*dieu + pit...*

Handwritten musical score for system 7. The top staff has chords with accents (^) and a circled 7. The middle and bottom staves show piano accompaniment with slurs and the number 4. The lyrics "dieu est..." and "dieu + pit..." are written below the staves.

7 (oder frei) ohne Tablatzettel (aber nur das grösste mal)  
 grösstes mit... ?

(glück.) ad libitum in Des Dur  
 (Zauberhaft zart)

D.C.

lange ?

ppp

ppp

sehr züchtig  
 (ausklingen)

F  
 N  
 E  
 N  
 D  
 E  
 R

Teil III.

(sehr langsam beginnen) ständiger Steigen bis Fortissimo (ff) ①

(Harfencole) (bis [ff] wie ein Motor) ①

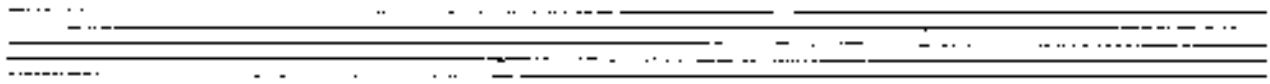
(8 TAKTE) Teil A ②

dieser Teil (8 TAKTE) wird von (Harfe)

ständig wiederholt) von sehr langsam und (pp) — bis — zur Steigerung:

Fortissimo (ff)

(Flöte spielt (frei) Variationen dazu)

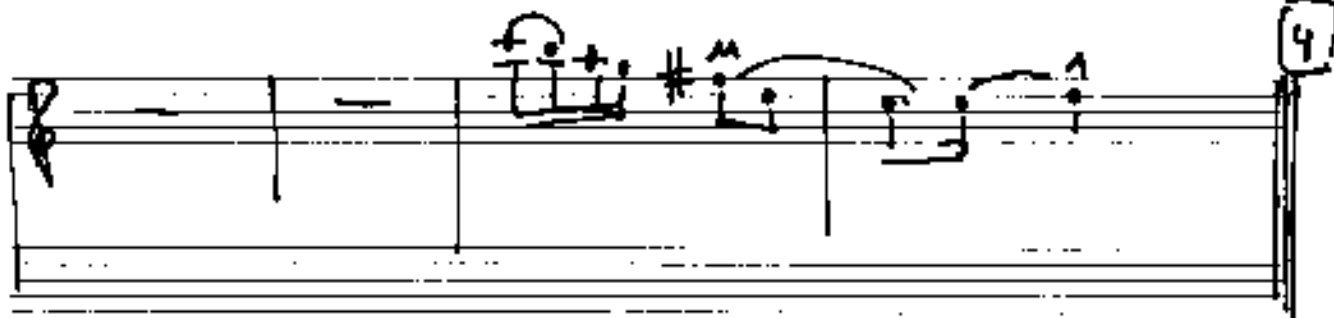
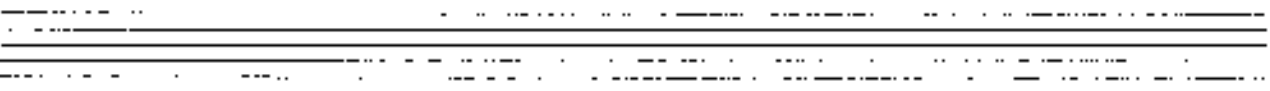
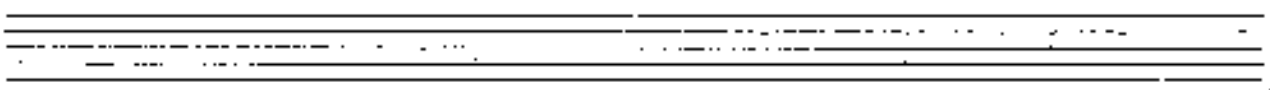
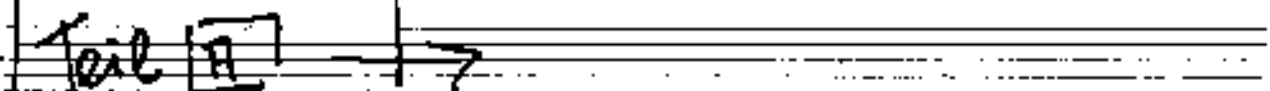


beginnen (pp) sehr langsam) steigen bis (Pizzissimo)  $\text{f}^{\#}$

Flöte Solo



Harfe Teil A



④

Flöte

Teil ①

⑤

Teil ①

Handwritten musical notation on a grand staff. The right hand part contains a melodic line with a slur and a fermata. A circled number '6' is at the end of the staff.

Handwritten musical notation on a grand staff. The left hand part contains two chords with slurs. The word "Teil" is written in a box on the left.

Handwritten musical notation on a grand staff. The left hand part contains two chords with slurs. A circled number '7' is at the end of the staff.

Handwritten musical notation on a grand staff. The left hand part contains four whole notes. The word "Teil" is written in a box on the left.

Harfondo - (8 Takte) Teil 8



Hündig Leigern → flöte  
und Klarinetten

8

Handwritten musical notation for 'Teil A'. It consists of a grand staff with two staves. The upper staff is empty, and the lower staff contains a single whole note. The text 'Teil A' is written in the lower staff.

Handwritten musical notation for 'Teil A'. It consists of a grand staff with two staves. The upper staff contains a melodic line with eighth notes and rests, and the lower staff contains a bass line with eighth notes and rests. The text 'Teil A' is written in the lower staff.

Handwritten musical notation for 'Teil A'. It consists of a grand staff with two staves. The upper staff contains a melodic line with eighth notes and rests, and the lower staff contains a bass line with eighth notes and rests. The text 'Teil A' is written in the lower staff.

Handwritten musical notation for measures 7 and 8. The top staff contains chords with accidentals and slurs. The bottom staff is labeled "Teil II".

Handwritten musical notation for measures 9 and 10. Measure 10 is circled with the number 10.

Handwritten musical notation for measures 11 and 12. The bottom staff is labeled "Teil III".

Handwritten musical notation for measures 13 and 14. Measure 14 is circled with the number 14.

# Prestissimo

ff

noch ständiger steigen

11

Handel Solo

12

feste  
allain

↓ Solo -  
ff

13

14

(So stark) und rasch (wie möglich)

Handwritten musical notation for the first system. It features a treble clef, a key signature of one flat (B-flat), and a circled number '11'. The notation includes several chords with upward-pointing arrows above them, and a complex, jagged line representing a glissando or tremolo effect across the staff.

(in Des) Dur) *ritmo* (???) *glissando*  
(mit Pedal)

Handwritten musical notation for the second system, continuing the glissando effect from the first system. It shows chords with upward-pointing arrows and a jagged line across the staff.

Handwritten musical notation for the third system. It features more complex chordal structures with various accidentals (sharps and flats) and upward-pointing arrows. A jagged line continues across the staff.

Handwritten musical notation for the fourth system, ending with circled numbers '15' and '16'. The notation includes chords with upward-pointing arrows and a jagged line across the staff.

16

Flöte



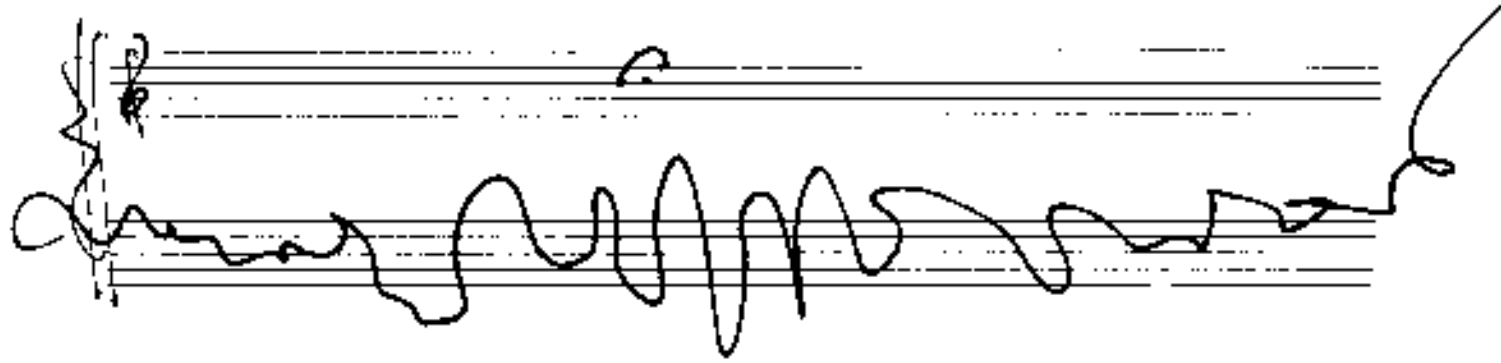
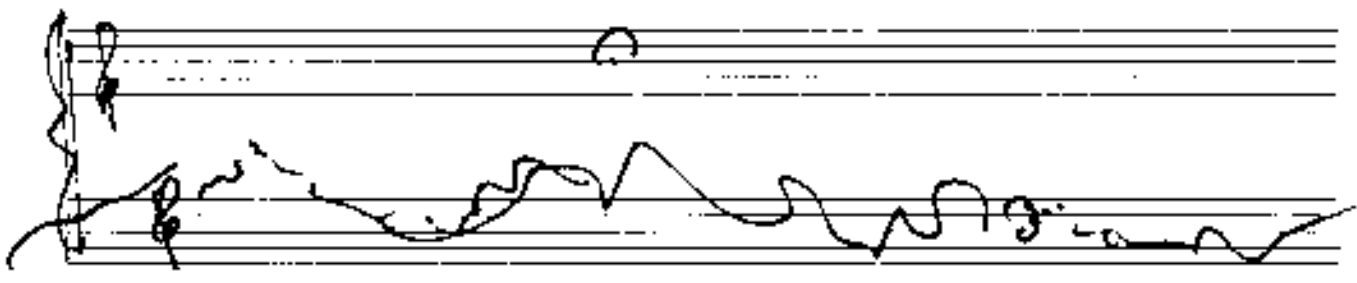
(Kadenz von Harfe)

Harfe



mittler  
glissando  
gang frei  
mit Pedal

u.s.w.



Kadenz (dem Solisten überlassen)

Harfe (Solo) freispielen

(dem Solisten (frei überlassen) in diesem Teil der größten Spannung) **alle Möglichkeiten** der Harfe (auszunutzen) frei nach seinem Empfinden)

(ALS) GRUNDGEDANKE) DIE HAUPTTÖNE) der Kadenz  
(jeder tonale Klang auf jeden Fall zu vermeiden)



Harfensolo (Kadenz)

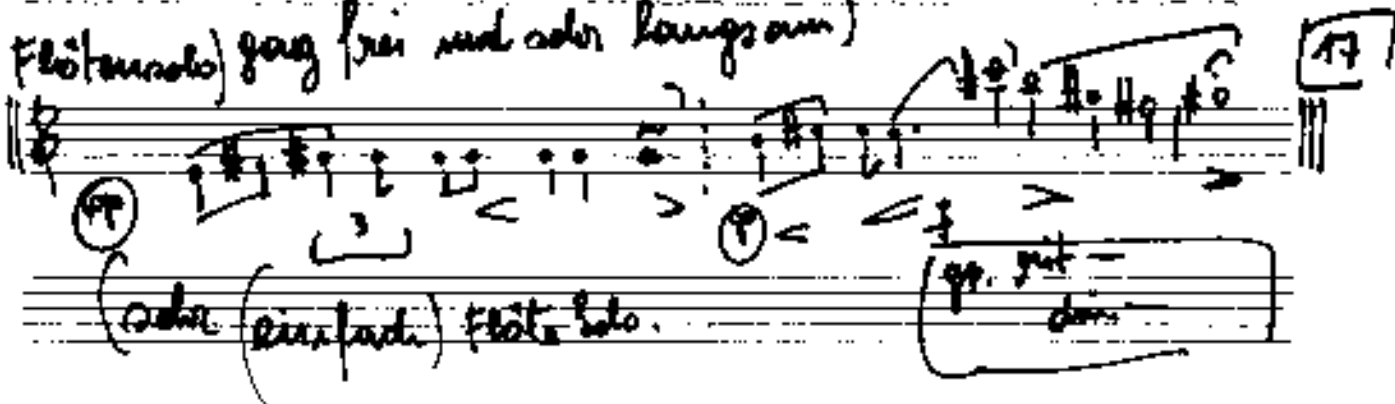
fff (als Höhepunkt)

weklungen lassen bis

folgt (Spannungspause)

Teil 4

Flötensolo) ganz frei und sehr langsam)



(sehr (einfach) Flöte Solo)

pp. jet -  
dann

Teil 5

17

(so ruhig wie möglich (ausklingen) (wie ein Hauch)

Flöte

Harfe

18

(Drei-ausstehend)

die + rit...

19

(sehr ruhig)

(statische glissando)

lange

20

(wie glänzen)

ppp

ped.