

L. v. BEETHOVEN



W. A. MOZART



NOTENHEFT

F. SCHUBERT



J. HAYDN



J. STRAUSS



FRUWART

1969 (Sonate für Klavier) Adolf Scherbaum

(1)

(Allegro)

ruhig fließend

(1)

(3)

steigern im Tempo

etwas zurück

(4)

④ Tempo 1.

⑤

⑥

erragt bewegt

⑦

⑧

steigen

solo except lowest

Handwritten musical notation for measure 9. The system consists of two staves. The upper staff is in treble clef and contains a melodic line with notes $\hat{b} \hat{a} \hat{g} \hat{f}$ and $\hat{b} \hat{a} \hat{g} \hat{f}$, with a slur over the first four notes and an accent (^) over the fifth. The lower staff is in bass clef and contains a bass line with notes $\hat{b} \hat{a} \hat{g} \hat{f}$ and $\hat{b} \hat{a} \hat{g} \hat{f}$, with a slur over the first four notes. A circled number '9' is at the end of the system. A circled '77' is in the left margin. The word 'Pedal' is written in the left margin with a bracket under the first two notes of the bass line.

Handwritten musical notation for measure 10. The system consists of two staves. The upper staff is in treble clef and contains a melodic line with notes $\hat{b} \hat{a} \hat{g} \hat{f}$ and $\hat{b} \hat{a} \hat{g} \hat{f}$, with a slur over the first four notes and an accent (^) over the fifth. The lower staff is in bass clef and contains a bass line with notes $\hat{b} \hat{a} \hat{g} \hat{f}$ and $\hat{b} \hat{a} \hat{g} \hat{f}$, with a slur over the first four notes. A circled number '10' is at the end of the system. The word 'Pedal' is written in the left margin with a bracket under the first two notes of the bass line.

Handwritten musical notation for measure 11. The system consists of two staves. The upper staff is in treble clef and contains a melodic line with notes $\hat{b} \hat{a} \hat{g} \hat{f}$ and $\hat{b} \hat{a} \hat{g} \hat{f}$, with a slur over the first four notes and an accent (^) over the fifth. The lower staff is in bass clef and contains a bass line with notes $\hat{b} \hat{a} \hat{g} \hat{f}$ and $\hat{b} \hat{a} \hat{g} \hat{f}$, with a slur over the first four notes. A circled number '11' is at the end of the system. The word 'meno' is written above the first staff and '(rit + dim)' is written above the second staff.

Handwritten musical notation for measure 12. The system consists of two staves. The upper staff is in treble clef and contains a melodic line with notes $\hat{b} \hat{a} \hat{g} \hat{f}$ and $\hat{b} \hat{a} \hat{g} \hat{f}$, with a slur over the first four notes and an accent (^) over the fifth. The lower staff is in bass clef and contains a bass line with notes $\hat{b} \hat{a} \hat{g} \hat{f}$ and $\hat{b} \hat{a} \hat{g} \hat{f}$, with a slur over the first four notes. A circled number '12' is at the end of the system. The word 'rit' is written above the second staff. A circled '10' is in the left margin. The fraction $\frac{3}{4}$ is written in the left margin.

ruhig -

3/4

13

14

steigend →

15

Accel. →

16

17

Tempo: \uparrow

accel.

18

rit. except tenuto

19

20

(letzte + ev. mit 13)

pesante

Handwritten musical score for page 21. The top staff is a piano part with notes and rests, including a circled '21' in the top right corner. The bottom staff shows a bass line with a large curved line underneath it. There are dynamic markings like '<|f||p' and accents like '^' throughout the score.

Handwritten musical score for page 22. The top staff is a piano part with notes and rests, including a circled '22' in the top right corner. The bottom staff shows a bass line with a large curved line underneath it. There are dynamic markings like '<f||p||p' and accents like '^' throughout the score.

Allargia con brio

Handwritten musical score for page 23. The top staff is a piano part with notes and rests, including a circled '23' in the top right corner. The bottom staff shows a bass line with a large curved line underneath it. There are dynamic markings like 'f' and 'b' throughout the score.

Handwritten musical score for page 24. The top staff is a piano part with notes and rests, including a circled '24' in the top right corner. The bottom staff shows a bass line with a large curved line underneath it. There are dynamic markings like 'f' and 'b' throughout the score.

etwas meliger

23

Handwritten musical notation for exercise 23. It consists of two staves: a treble clef staff and a bass clef staff. The time signature is 7/4. The treble staff contains a melodic line with slurs and various accidentals (sharps and naturals). The bass staff contains a simple harmonic accompaniment with slurs and accidentals.

Tempo steigen

24

Handwritten musical notation for exercise 24. It consists of two staves: a treble clef staff and a bass clef staff. The time signature is 3/4. The treble staff contains a melodic line with slurs and various accidentals. The bass staff contains a harmonic accompaniment with slurs and accidentals.

sehr bewegt

25

Handwritten musical notation for exercise 25. It consists of two staves: a treble clef staff and a bass clef staff. The time signature is 3/4. The treble staff contains a melodic line with slurs and various accidentals. The bass staff contains a harmonic accompaniment with slurs and accidentals.

gr. Steigerung

26

Handwritten musical notation for exercise 26. It consists of two staves: a treble clef staff and a bass clef staff. The time signature is 3/4. The treble staff contains a melodic line with slurs and various accidentals. The bass staff contains a harmonic accompaniment with slurs and accidentals. There is a circled 'D' in the bottom right corner of the staff.

Furioso

Handwritten musical notation for measures 27 and 28. Measure 27 features a treble clef with a key signature of one sharp (F#) and a common time signature (C). The melody consists of eighth notes with accents, starting on G4 and moving up to D5. The bass clef part has a whole note chord of G4-B4-D5. Measure 28 shows a treble clef with a key signature of one flat (Bb) and a common time signature (C). The melody continues with eighth notes, including a chromatic descent from D5 to C5. The bass clef part has a whole note chord of G4-Bb4-D5. A circled measure number '27' is in the top right, and a circled measure number '28' is in the top right of the second system.

Handwritten musical notation for measures 29 and 30. Measure 29 features a treble clef with a key signature of one flat (Bb) and a common time signature (C). The melody consists of eighth notes with accents, starting on G4 and moving up to D5. The bass clef part has a whole note chord of G4-Bb4-D5. Measure 30 shows a treble clef with a key signature of one flat (Bb) and a common time signature (C). The melody continues with eighth notes, including a chromatic descent from D5 to C5. The bass clef part has a whole note chord of G4-Bb4-D5. A circled measure number '29' is in the top right, and a circled measure number '30' is in the top right of the second system.

Handwritten musical notation for measures 31 and 32. Measure 31 features a treble clef with a key signature of one sharp (F#) and a common time signature (C). The melody consists of eighth notes with accents, starting on G4 and moving up to D5. The bass clef part has a whole note chord of G4-B4-D5. Measure 32 shows a treble clef with a key signature of one sharp (F#) and a common time signature (C). The melody continues with eighth notes, including a chromatic descent from D5 to C5. The bass clef part has a whole note chord of G4-B4-D5. A circled measure number '31' is in the top right, and a circled measure number '32' is in the top right of the second system.

Handwritten musical notation for measures 33 and 34. Measure 33 features a treble clef with a key signature of one sharp (F#) and a common time signature (C). The melody consists of eighth notes with accents, starting on G4 and moving up to D5. The bass clef part has a whole note chord of G4-B4-D5. Measure 34 shows a treble clef with a key signature of one sharp (F#) and a common time signature (C). The melody continues with eighth notes, including a chromatic descent from D5 to C5. The bass clef part has a whole note chord of G4-B4-D5. A circled measure number '33' is in the top right, and a circled measure number '34' is in the top right of the second system. The word 'meno' is written below the bass clef part in measure 34. A circled measure number '8' is at the bottom right of the page.

pesante (ritardando) appassionata

31

Handwritten musical score for measures 31 and 32. Measure 31 features a treble clef with a circled '777' and a bass clef with a circled '777'. The music includes a melodic line with a slur and a bass line with a circled '777'. Measure 32 continues the melodic line with a slur and a bass line with a circled '777'.

32 (rit + dim)

33

Handwritten musical score for measures 33 and 34. Measure 33 features a treble clef with a circled '777' and a bass clef with a circled '777'. The music includes a melodic line with a slur and a bass line with a circled '777'. Measure 34 continues the melodic line with a slur and a bass line with a circled '777'.

34

Handwritten musical score for measures 35 and 36. Measure 35 features a treble clef with a circled '777' and a bass clef with a circled '777'. The music includes a melodic line with a slur and a bass line with a circled '777'. Measure 36 continues the melodic line with a slur and a bass line with a circled '777'.

35

Handwritten musical score for measures 37 and 38. Measure 37 features a treble clef with a circled '777' and a bass clef with a circled '777'. The music includes a melodic line with a slur and a bass line with a circled '777'. Measure 38 continues the melodic line with a slur and a bass line with a circled '777'.

oder ruhig (Klangraum)

3/4

3/4

(auf)

(mit)

Lento

(frei — wie ein Hauch)

(rit —)

Allargo con brio

(poco rit)

43 Lento

pp
Ped.
ppp
D.Cr. ad fine

Lento Choral

1
2
3
4

Herr er höre unser Flehen
 mit sind ein sam in mitten vieler

5
6

(pizz.)

FINE

zart

perute

10

4/4

zart - (frei)

10a

11

12

13

Andante
passato

Handwritten musical notation for measures 13 and 14. Measure 13 is circled in the top right corner. The notation includes a treble clef, a 4-measure rest, and various rhythmic figures with accents and slurs.

Handwritten musical notation for measures 15 and 16. Measure 16 is circled in the top right corner. The notation includes a treble clef and rhythmic figures with accents and slurs.

Handwritten musical notation for measures 17 and 18. Measure 18 is circled in the top right corner. The notation includes a treble clef and rhythmic figures with accents and slurs.

fine / ruhig

Handwritten musical notation for measures 19 and 20. Measure 20 is circled in the top right corner. The notation includes a treble clef, a 3-measure rest, and various rhythmic figures with accents and slurs.

al Fine

Satz (3) Finale

Presto

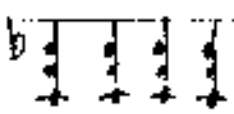
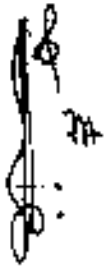
Furioso

5

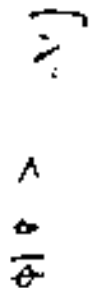
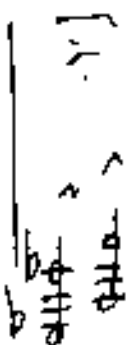
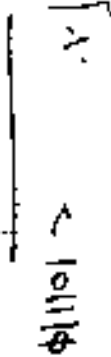
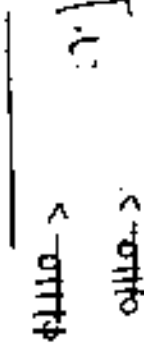
hart stacc.

^ ^ ^ ^

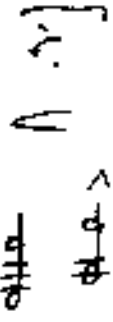
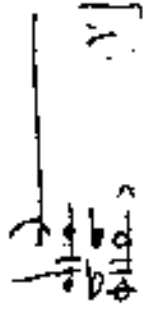
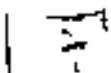
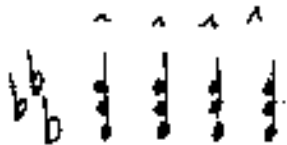
4



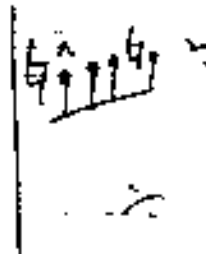
77



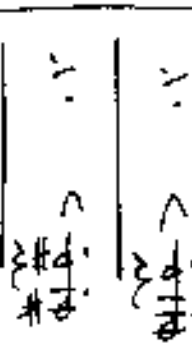
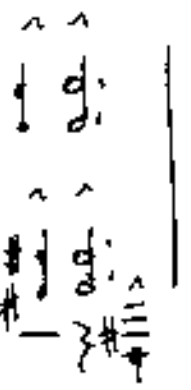
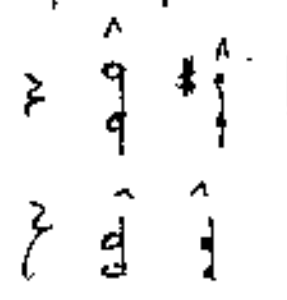
6



7



8



9

pp =
Ped.

10

ff

11

12

f

13

dim

f

Handwritten musical score for measures 13 and 14. The system includes a treble clef staff with notes and accidentals, and a bass clef staff with a dense sequence of notes. Measure 13 is marked with a circled '13' and a circled 'p'. Measure 14 is marked with a circled '14'.

Handwritten musical score for measures 15 and 16. The system includes a treble clef staff with notes and accidentals, and a bass clef staff with a dense sequence of notes. Measure 15 is marked with a circled '15' and a circled 'f'. Measure 16 is marked with a circled '16' and a circled 'p'.

Handwritten musical score for measures 17 and 18. The system includes a treble clef staff with notes and accidentals, and a bass clef staff with a dense sequence of notes. Measure 17 is marked with a circled '17' and a circled 'f'. Measure 18 is marked with a circled '18' and a circled 'p'.

Handwritten musical score for measures 19 and 20. The system includes a treble clef staff with notes and accidentals, and a bass clef staff with a dense sequence of notes. Measure 19 is marked with a circled '19' and a circled 'ff'. Measure 20 is marked with a circled '20' and a circled 'p'.

Handwritten musical score for measures 20 and 21. Measure 20 is circled. The score shows a treble clef with notes and a bass clef with chords. A large slur covers measures 20 and 21. Measure 21 is also circled.

Handwritten musical score for measures 22 and 23. Measure 22 is circled. The score shows a treble clef with notes and a bass clef with chords. Measure 23 is circled.

Handwritten musical score for measures 23 and 24. Measure 23 is circled. The score shows a treble clef with notes and a bass clef with chords. Measure 24 is circled.

letzte + großes mit

Handwritten musical score for measures 24 and 25. Measure 24 is circled. The score shows a treble clef with notes and a bass clef with chords. Measure 25 is circled.

Andante (profess Steigerung - bis ppp)

Handwritten musical score for the first system. It consists of two staves: a piano part on top and a pedal part on the bottom. The piano part is in 4/4 time and features a melodic line with various accidentals (sharps and naturals) and dynamic markings including *ppp* and *pppp*. The pedal part shows a sequence of chords and notes, with a circled '5' above the first measure. The system concludes with a circled '25' at the end of the staff.

nota brevis (pesante) (wie ein Choral)

Handwritten musical score for the second system. It features a piano part on top and a pedal part on the bottom. The piano part is in 3/4 time and contains several measures of music with dynamic markings such as *ppp*. The pedal part includes a circled '777' and a circled 'ppp'. Below the piano part, there is a detailed diagram of a piano keyboard showing the fingerings for the notes in the pedal part. The system ends with a circled '20' at the bottom center.

26

27

28

rit + dim

Adagio

29

pp

Adagio

Copa (antico Prestissimo)

Handwritten musical notation for the first system of 'Copa'. It features a treble clef and a key signature of one sharp (F#). The notation includes various rhythmic values, slurs, and dynamic markings. A circled letter 'A' is located at the top right of this system.

Handwritten musical notation for the second system of 'Copa'. It continues the piece with similar notation to the first system. A circled letter 'B' is located at the top right of this system.

Handwritten musical notation for the third system of 'Copa'. It includes a circled letter 'C' at the top left and a circled letter 'D' at the top right of the system.

Handwritten musical notation for the fourth system of 'Copa'. It features a large slur over the notes and includes the word 'Cupa' written above the staff. A circled 'G.P.' is visible on the right side of the system.

Handwritten musical notation for the fifth system of 'Copa'. It includes the word 'Prestissimo' above the staff and a circled 'G.P.' at the beginning. The notation shows a sequence of notes with slurs.

1969
 Holley
 Dunham
 FIN