

L.v. BEETHOVEN



W.A. MOZART



NOTENHEFT

F. SCHUBERT



J. HAYDN



J. STRAUSS



Sonate für Jazzpiano

1969

Adolf Scherbaum

①

Allegro vivace

①

Handwritten musical notation for the first system. It features a treble and bass clef with a 2/4 time signature. The tempo is marked "Allegro vivace". The first measure is marked "kaut" and "ff". The melody in the treble clef consists of eighth and quarter notes with various accidentals (sharps and naturals). The bass clef provides a harmonic accompaniment with chords and single notes. There are several accents (^) and slurs over the notes.

Handwritten musical notation for the second system. The treble clef contains a series of eighth notes with accents (^) and slurs. The bass clef has rests in the first two measures, followed by chords with accents (^) and slurs. The notation is dense and expressive.

②

Handwritten musical notation for the third system. The treble clef features a complex melodic line with many accidentals (sharps, flats, naturals) and slurs. The bass clef has rests in the first two measures, followed by chords with accents (^) and slurs. The overall texture is intricate and rhythmic.

③

Handwritten musical notation for the fourth system. The treble clef contains a series of chords with slurs and accents (^). The bass clef has rests in the first two measures, followed by chords with accents (^) and slurs. The notation is dense and expressive.

4

pp *bb*₉ *bb*₉ *p*

^ ^ ^ ^ *> dir*

5

p

6

f

7

f

Handwritten musical notation for measures 7 and 8. Measure 7 features a piano (*p*) dynamic marking and a slur over a group of notes in the right hand. Measure 8 has a circled measure number '8'.

Handwritten musical notation for measures 9 and 10. Measure 9 has a circled measure number '9'. Measure 10 has a circled measure number '10'. A 'Pedal' marking is present at the start of measure 10.

Handwritten musical notation for measures 11 and 12. Measure 11 has a circled measure number '11'. Measure 12 has a circled measure number '12'. A 'din' marking is present in measure 12.

Handwritten musical notation for measures 13 and 14. Measure 13 has a circled measure number '13'. Measure 14 has a circled measure number '14'. A 'CODA' marking is present at the end of measure 14.

Handwritten musical notation for measure 12. The system consists of two staves. The upper staff is in treble clef with a key signature of one sharp (F#) and a common time signature (C). It contains a melodic line with notes G4, A4, B4, C5, and D5, with slurs and accents. The lower staff is in bass clef and contains a bass line with notes G2, A2, B2, C3, and D3, with slurs and accents. A circled measure number '12' is in the top right corner.

Handwritten musical notation for measure 13. The system consists of two staves. The upper staff is in treble clef with a key signature of one sharp (F#) and a common time signature (C). It contains a melodic line with notes G4, A4, B4, C5, and D5, with slurs and accents. The lower staff is in bass clef and contains a bass line with notes G2, A2, B2, C3, and D3, with slurs and accents. A circled measure number '13' is in the top right corner.

Handwritten musical notation for measure 14. The system consists of two staves. The upper staff is in treble clef with a key signature of one sharp (F#) and a common time signature (C). It contains a melodic line with notes G4, A4, B4, C5, and D5, with slurs and accents. The lower staff is in bass clef and contains a bass line with notes G2, A2, B2, C3, and D3, with slurs and accents. A circled measure number '14' is in the top right corner.

Handwritten musical notation for measure 15. The system consists of two staves. The upper staff is in treble clef with a key signature of one sharp (F#) and a common time signature (C). It contains a melodic line with notes G4, A4, B4, C5, and D5, with slurs and accents. The lower staff is in bass clef and contains a bass line with notes G2, A2, B2, C3, and D3, with slurs and accents. A circled measure number '15' is in the top right corner.

Handwritten musical notation for measures 16 and 17. The system consists of two staves. Measure 16 is marked with a circled '16' in the top right. The right staff contains a melodic line with a circled '14' in the first measure, followed by notes with accents and slurs. The left staff contains a bass line with notes and chords, including a circled '14' in the first measure. Measure 17 continues the melodic and bass lines.

Handwritten musical notation for measures 18 and 19. The system consists of two staves. Measure 18 is marked with a circled '17' in the top right. The right staff contains a melodic line with a circled '17' in the first measure, followed by notes with accents and slurs. The left staff contains a bass line with notes and chords, including a circled '17' in the first measure. Measure 19 continues the melodic and bass lines.

Handwritten musical notation for measures 20 and 21. The system consists of two staves. Measure 20 is marked with a circled '18' in the top right. The right staff contains a melodic line with a circled '18' in the first measure, followed by notes with accents and slurs. The left staff contains a bass line with notes and chords, including a circled '18' in the first measure. Measure 21 continues the melodic and bass lines.

Handwritten musical notation for measures 22 and 23. The system consists of two staves. Measure 22 is marked with a circled '19' in the top right. The right staff contains a melodic line with a circled '19' in the first measure, followed by notes with accents and slurs. The left staff contains a bass line with notes and chords, including a circled '19' in the first measure. Measure 23 continues the melodic and bass lines.

Handwritten musical notation for measures 20 and 21. Measure 20 features a treble clef with notes G4, A4, Bb4, and C5, and a bass clef with notes G2, A2, Bb2, and C3. Measure 21 features a treble clef with notes G4, A4, Bb4, and C5, and a bass clef with notes G2, A2, Bb2, and C3. Both measures include dynamic markings and articulation symbols.

Handwritten musical notation for measures 22 and 23. Measure 22 features a treble clef with notes G4, A4, Bb4, and C5, and a bass clef with notes G2, A2, Bb2, and C3. Measure 23 features a treble clef with notes G4, A4, Bb4, and C5, and a bass clef with notes G2, A2, Bb2, and C3. Both measures include dynamic markings and articulation symbols.

Handwritten musical notation for measure 24. The measure is marked *meno* and includes the instruction *(rit---)*. It features a treble clef with notes G4, A4, Bb4, and C5, and a bass clef with notes G2, A2, Bb2, and C3. The measure includes a dynamic marking *(p)* and articulation symbols.

Handwritten musical notation for a section marked *ruhig*. It features a treble clef with notes G4, A4, Bb4, and C5, and a bass clef with notes G2, A2, Bb2, and C3. The section includes a dynamic marking *(p)* and articulation symbols.

25

(rit...)

26

lento

27

28

P. l
al
p

♩ CODA (Satz 1)

(rit-----dim)

Satz ②

Lento

breit

romantic

Crut...

leuts

Handwritten musical score for the first system. It consists of two staves. The top staff is in treble clef with a key signature of two sharps (F# and C#). The bottom staff is in bass clef with a key signature of one sharp (F#). The music begins with a *pp* dynamic marking. The first measure contains a complex chordal structure. The second and third measures feature a melodic line in the right hand with slurs and accents, and a corresponding bass line. The system concludes with a double bar line and a circled **CODA** marking.

Handwritten musical score for the second system. It consists of two staves. The top staff is in treble clef with a key signature of one sharp (F#). The bottom staff is in bass clef with a key signature of one sharp (F#). The system begins with the handwritten instruction *sehr ruhig*. The music features a melodic line in the right hand with slurs and accents, and a bass line with some chromatic movement. The system ends with a double bar line.

Handwritten musical score for the third system. It consists of two staves. The top staff is in treble clef with a key signature of one flat (Bb). The bottom staff is in bass clef with a key signature of one flat (Bb). The system contains three measures of music, primarily consisting of chords and simple bass lines. The first measure has an accent (^) over the first note. The second measure has a *bd.* marking. The third measure has a *f* dynamic marking.

Handwritten musical score for the fourth system. It consists of two staves. The top staff is in treble clef with a key signature of one flat (Bb). The bottom staff is in bass clef with a key signature of one flat (Bb). The system begins with a *fz* marking and an accent (^) over the first note. The music features a melodic line in the right hand with slurs and accents, and a bass line with some chromatic movement. The system concludes with a double bar line and the handwritten instruction *poco rit*.

brat

♩ CODA (Jatz 2)

(rit...)

lunga

Handwritten musical notation for a piano piece. The score is written on a grand staff with treble and bass clefs. The key signature has two sharps (F# and C#). The time signature is common time (C). The notation includes a piano (pp) dynamic marking, a fermata over a melodic line in the treble clef, and a large, expressive slur in the bass clef. There are also some handwritten annotations like 'rit...' and 'lunga'.

②

sehr langsam + rhythmisch

2

3

4

5

⑥

Handwritten musical notation for measure 6. The right hand has a melodic line with eighth notes and a slur. The left hand has a bass line with a slur and a fermata. Chords are indicated as $b7$ and $b7$.

⑦

Handwritten musical notation for measure 7. The right hand has a melodic line with eighth notes and a slur. The left hand has a bass line with a slur and a fermata. Chords are indicated as $b7$ and $b7$.

⑧

Handwritten musical notation for measure 8. The right hand has a melodic line with eighth notes and a slur. The left hand has a bass line with a slur and a fermata. Chords are indicated as $\#7$ and $\#7$.

⑨

Handwritten musical notation for measure 9. The right hand has a melodic line with eighth notes and a slur. The left hand has a bass line with a slur and a fermata. Chords are indicated as $\#7$ and $\#7$.

(poco rit) Mod. (auf 1)

(poco rit)

tempo

Handwritten musical notation for the first system. The treble clef staff contains a melodic line with notes and accidentals (flats and naturals) and a slur. The bass clef staff contains a bass line with notes, accidentals, and dynamic markings including f and pp .

Crit dein *Tango* (1)

Handwritten musical notation for the second system. It includes the tempo marking "Tango" with a circled "1". The notation features a treble clef staff with notes and a bass clef staff with notes, accidentals, and dynamic markings such as f and pp .

Handwritten musical notation for the third system. The treble clef staff contains notes and rests. The bass clef staff contains chords and rests, with the marking "Cresc." (Crescendo) written above the staff.

Handwritten musical notation for the fourth system. The treble clef staff contains notes and rests. The bass clef staff contains chords and rests, with dynamic markings including ff (fortissimo).

Handwritten musical notation for the first system. The treble staff contains notes with various accidentals (sharps, naturals) and dynamic markings such as **ff**. The bass staff contains notes with accidentals and dynamic markings like **p**. There are slurs and accents throughout the system.

Handwritten musical notation for the second system. The treble staff begins with a series of notes marked with 'v' (accents) and ends with a boxed **CODA** symbol. The bass staff contains notes with accents and dynamic markings like **p**.

Handwritten musical notation for the third system. The treble staff features notes with accidentals and slurs. The bass staff contains rests.

Handwritten musical notation for the fourth system. The treble staff contains notes with accidentals, slurs, and dynamic markings like **dim**. The bass staff contains notes with accidentals. The system concludes with a **D.C.** marking and a **3** (triple). The number **20** is written below the staff.

Handwritten musical notation for the first system. The treble staff contains a series of notes with accents and slurs, including a circled 'p' marking. The bass staff shows a sequence of notes with slurs and rests.

Handwritten musical notation for the second system. The treble staff has notes with accents and slurs. The bass staff contains notes with slurs and rests, including a circled 'f' marking.

Handwritten musical notation for the third system. The treble staff has notes with accents and slurs, including a circled 'ff' marking. The bass staff contains notes with slurs and rests.

Handwritten musical notation for the fourth system. The treble staff has notes with accents and slurs. The bass staff contains notes with slurs and rests.

Handwritten musical notation for the first system. The treble clef staff contains notes with accents (^) and slurs. The bass clef staff contains a melodic line with slurs and repeat signs.

Handwritten musical notation for the second system. The treble clef staff features complex chordal textures with many notes beamed together. The bass clef staff continues the melodic line with slurs and repeat signs.

Handwritten musical notation for the third system. The treble clef staff shows a key signature change to one sharp (F#) and notes with accents (^). The bass clef staff continues the melodic line with slurs and repeat signs.

Handwritten musical notation for the fourth system. It begins with a 3/4 time signature and a first ending bracket labeled '(1)'. The treble clef staff has a melodic line with slurs. The bass clef staff has a melodic line with slurs and repeat signs, ending with a circled 'p' (piano) dynamic marking.

(2te + dir + rit)

sehr ruhig

23

Handwritten musical notation for the first system. The top staff is in treble clef and the bottom staff is in bass clef. The first measure of the top staff has a sharp sign and a slur over four notes. The second measure has a circled 'p' and a slur over four notes. The third measure has a slur over two notes. The fourth measure has a slur over two notes. There are various other markings including accents and slurs.

Handwritten musical notation for the second system. The top staff has a whole rest in the first measure, followed by quarter notes in the second measure, and eighth notes in the third and fourth measures. The bottom staff has quarter notes in the first measure, eighth notes in the second measure, and sixteenth notes in the third and fourth measures. There are various other markings including slurs and accents.

Handwritten musical notation for the third system. The top staff has quarter notes in the first measure, a whole rest in the second measure, and eighth notes in the third and fourth measures. The bottom staff has quarter notes in the first measure, eighth notes in the second measure, and sixteenth notes in the third and fourth measures. There are various other markings including slurs, accents, and dynamic markings like 'ff' and 'f'.

poco rit.

Handwritten musical notation for the first system. The treble clef staff contains a series of chords and melodic lines with slurs and accents. The bass clef staff contains a melodic line with slurs and accents. A circled 'p' is present in the first measure of the bass staff.

frei

Handwritten musical notation for the second system. The treble clef staff contains a melodic line with slurs and accents. The bass clef staff contains a melodic line with slurs and accents. A circled 'f' is present in the first measure of the bass staff.

breit

Handwritten musical notation for the third system. The treble clef staff contains a melodic line with slurs and accents. The bass clef staff contains a melodic line with slurs and accents. A circled 'f' is present in the first measure of the bass staff.

frei

rit.

Handwritten musical notation for the fourth system. The treble clef staff contains a melodic line with slurs and accents. The bass clef staff contains a melodic line with slurs and accents. A circled 'f' is present in the first measure of the bass staff. The word 'rit.' is written below the bass staff.

Prati

pp

0 0

0 0

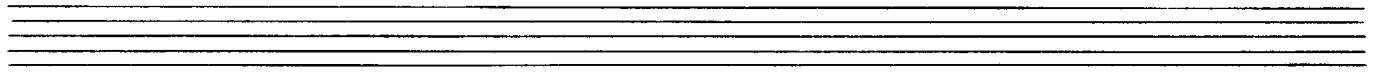
gr. rit

pp

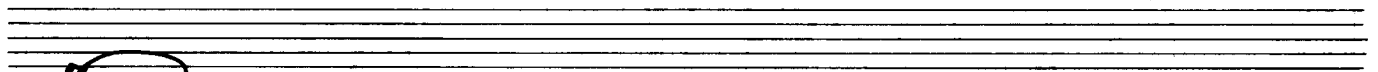
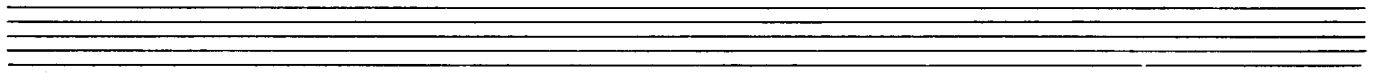
0 0

0 0

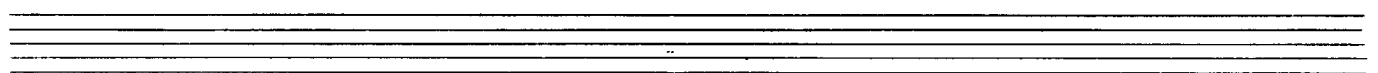
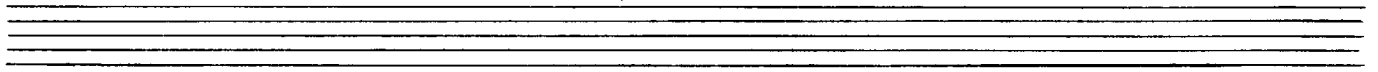
D.C.
 bat 3
 al ϕ
 CODA



♩ *corda (1st 3)*



diun



Handwritten musical notation on a grand staff. The upper staff contains a melodic line starting with a quarter note, followed by a dotted quarter note, and then a half note. The lower staff contains a bass line with a half note, a quarter note, and a quarter note. The notation is in a key with one flat and a 3/4 time signature. A dynamic marking 'pp' is present. There are some handwritten annotations above the notes, including a 'b' and a '9'.

Handwritten musical notation on a grand staff. The upper staff contains a melodic line with a quarter note, a dotted quarter note, and a half note. The lower staff contains a bass line with a half note, a quarter note, and a quarter note. The notation is in a key with one flat and a 3/4 time signature. There are some handwritten annotations above the notes, including a 'b' and a '9'.