

L.v. BEETHOVEN



W.A. MOZART



# NOTENHEFT

F. SCHUBERT



J. HAYDN



J. STRAUSS



FORNIT

Sonate für

Cello und Klavier

1869

Adolf Scherbaum

(2 Sätze)

1

Lento (♩)  
(Mod.) nicht schleppend!

①

(p) (mit probier Vorzug)

②

③

ff =  
ff =  
ff =

Handwritten musical score for system 4, consisting of three measures. The top staff is in treble clef with a key signature of one sharp (F#) and a common time signature (C). The middle staff is in treble clef with a key signature of one sharp (F#) and a common time signature (C). The bottom staff is in bass clef with a key signature of one sharp (F#) and a common time signature (C). The first measure contains a circled number 4. The second measure contains a circled number 5. The third measure contains a circled number 6. The notation includes various notes, rests, and dynamic markings such as accents (^) and slurs.

Handwritten musical score for system 5, consisting of three measures. The top staff is in treble clef with a key signature of one sharp (F#) and a common time signature (C). The middle staff is in treble clef with a key signature of one sharp (F#) and a common time signature (C). The bottom staff is in bass clef with a key signature of one sharp (F#) and a common time signature (C). The first measure contains a circled number 4. The second measure contains a circled number 5. The third measure contains a circled number 6. The notation includes various notes, rests, and dynamic markings such as accents (^) and slurs.

Handwritten musical score for system 6, consisting of three measures. The top staff is in treble clef with a key signature of one sharp (F#) and a common time signature (C). The middle staff is in treble clef with a key signature of one sharp (F#) and a common time signature (C). The bottom staff is in bass clef with a key signature of one sharp (F#) and a common time signature (C). The first measure contains a circled number 4. The second measure contains a circled number 5. The third measure contains a circled number 6. The notation includes various notes, rests, and dynamic markings such as accents (^) and slurs.

7

Handwritten musical score for system 7. The top staff is in treble clef and the bottom staff is in bass clef. The key signature has one sharp (F#). The music consists of a melodic line in the treble and a bass line in the bass. Dynamics include *pp* (pianissimo) and *aus* (auscultando). A *Pedal* marking is present in the bass staff. The system is numbered 7 in a circle at the top right.

8

Handwritten musical score for system 8. The top staff is in treble clef and the bottom staff is in bass clef. The key signature has two flats (Bb, Eb). The music consists of a melodic line in the treble and a bass line in the bass. Dynamics include *p* (piano) and *aus* (auscultando). A *Pedal* marking is present in the bass staff. The system is numbered 8 in a circle at the top right.

9

Handwritten musical score for system 9. The top staff is in treble clef and the bottom staff is in bass clef. The key signature has two flats (Bb, Eb). The music consists of a melodic line in the treble and a bass line in the bass. Dynamics include *p* (piano) and *aus* (auscultando). A *Pedal* marking is present in the bass staff. The system is numbered 9 in a circle at the top right.

Handwritten musical score for measures 9 and 10. Measure 9 features a treble clef with a sharp key signature and a bass clef with a sharp key signature. Measure 10 features a treble clef with a sharp key signature and a bass clef with a sharp key signature. Both measures include complex chordal textures and melodic lines.

Handwritten musical score for measures 11 and 12. Measure 11 features a treble clef with a sharp key signature and a bass clef with a sharp key signature. Measure 12 features a treble clef with a sharp key signature and a bass clef with a sharp key signature. Both measures include complex chordal textures and melodic lines.

Handwritten musical score for measures 13 and 14. Measure 13 features a treble clef with a sharp key signature and a bass clef with a sharp key signature. Measure 14 features a treble clef with a sharp key signature and a bass clef with a sharp key signature. Both measures include complex chordal textures and melodic lines.

Handwritten musical notation for system 12. The system consists of three staves. The top staff is a single line with a treble clef, containing several notes with accidentals (sharps) and slurs. The middle and bottom staves are a grand staff with treble and bass clefs, containing chords and a long, sweeping line across the two staves. A circled number '12' is located in the top left corner.

Handwritten musical notation for system 13. The system consists of three staves. The top staff is a single line with a treble clef, containing notes with accidentals and slurs. The middle and bottom staves are a grand staff with treble and bass clefs, containing chords and a long, sweeping line. A circled number '13' is located in the top right corner.

Handwritten musical notation for system 14. The system consists of three staves. The top staff is a single line with a treble clef, containing notes with accidentals and slurs. The middle and bottom staves are a grand staff with treble and bass clefs, containing chords and a long, sweeping line. A circled number '14' is located in the top right corner.

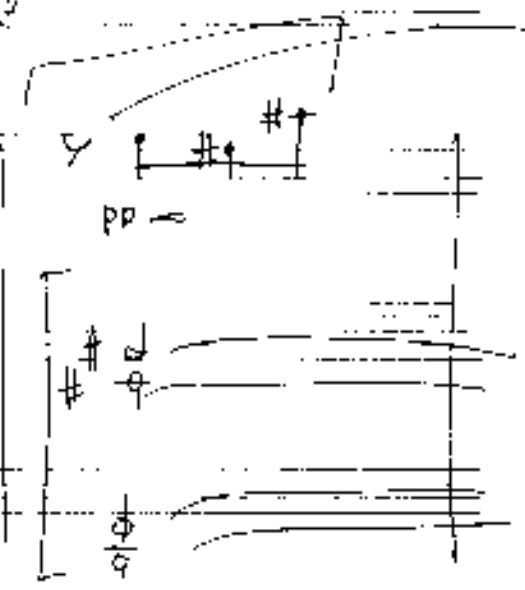
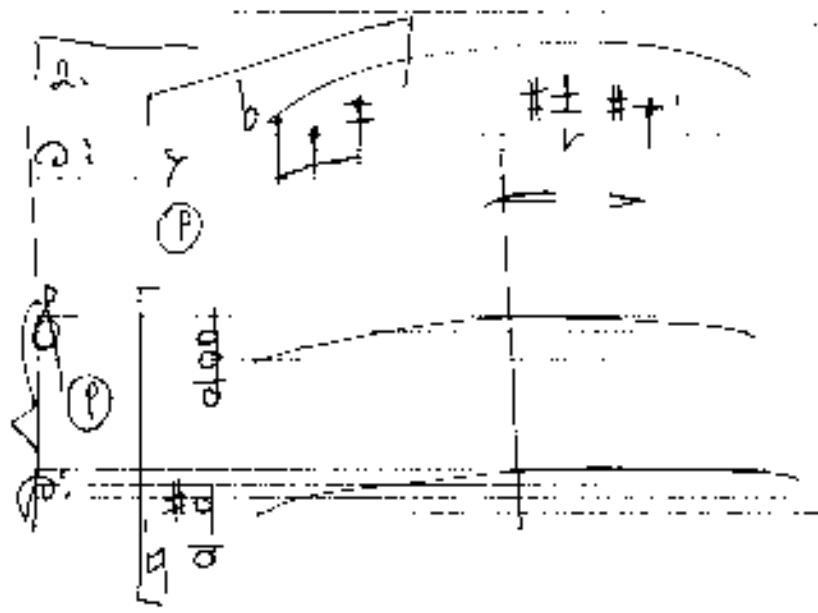
Handwritten musical score for measures 13-15. The top staff is a treble clef with a key signature of one sharp (F#) and a common time signature. It contains a melodic line with slurs and accents. The middle and bottom staves are bass clefs with a key signature of one sharp (F#) and a common time signature. They contain a bass line with slurs and accents. A circled '13' is at the end of the first staff. The word 'dim' is circled in the middle staff.

Handwritten musical score for measures 16-18. The top staff is a treble clef with a key signature of one sharp (F#) and a common time signature. It contains a melodic line with slurs and accents. The middle and bottom staves are bass clefs with a key signature of one sharp (F#) and a common time signature. They contain a bass line with slurs and accents. A circled '16' is at the end of the first staff. The word '(git)' is written in the middle staff.

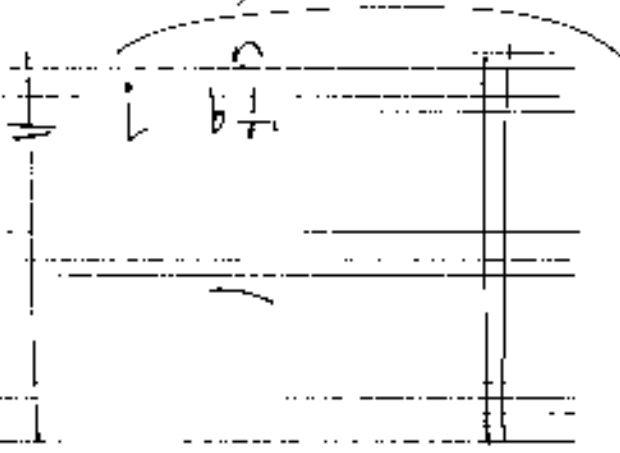
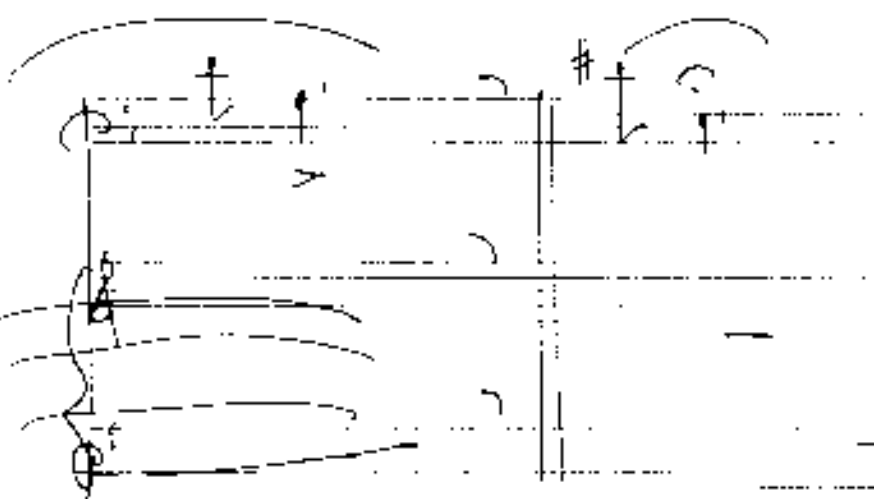
Handwritten musical score for measures 19-21. The top staff is a treble clef with a key signature of one sharp (F#) and a common time signature. It contains a melodic line with slurs and accents. The middle and bottom staves are bass clefs with a key signature of one sharp (F#) and a common time signature. They contain a bass line with slurs and accents. A circled '19' is at the end of the first staff. The word 'pp' is written in the middle staff.



(dit. dit.)

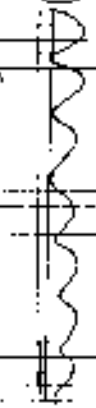
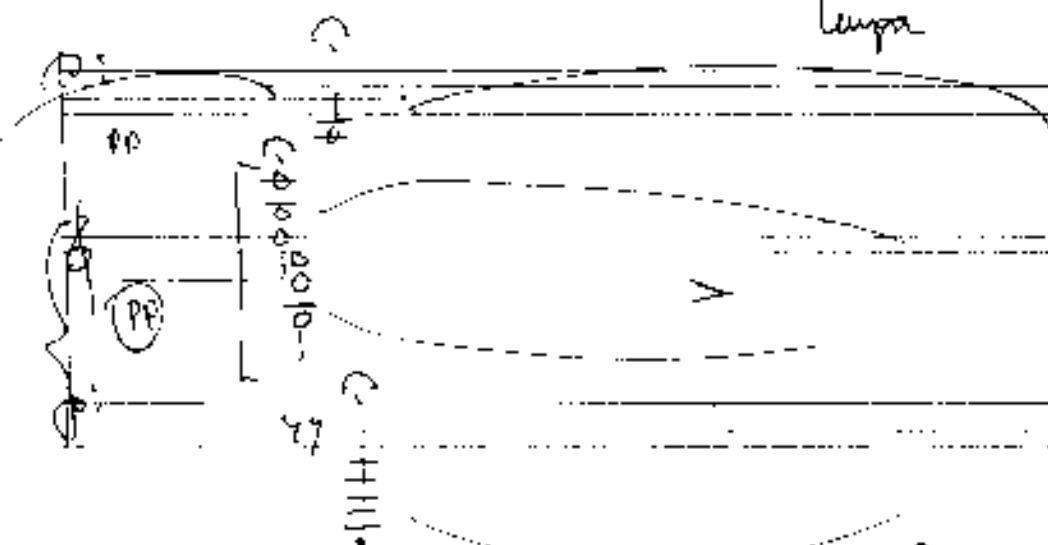


(dit. dit.)



lupa

(Fisic)



Part 2

Allegro con brio

Handwritten musical score for the first system. It features a treble clef and a piano (p) dynamic marking. The music is in 4/4 time. The first measure contains a melodic line with a slur and a circled number 1. The second measure contains a melodic line with a slur and a circled number 2. The third measure contains a melodic line with a slur and a circled number 3. The fourth measure contains a melodic line with a slur and a circled number 4. The fifth measure contains a melodic line with a slur and a circled number 5. The sixth measure contains a melodic line with a slur and a circled number 6. The seventh measure contains a melodic line with a slur and a circled number 7. The eighth measure contains a melodic line with a slur and a circled number 8. The ninth measure contains a melodic line with a slur and a circled number 9. The tenth measure contains a melodic line with a slur and a circled number 10. The bass line consists of chords in the left hand, with a circled number 1 at the end.

Handwritten musical score for the second system. It features a treble clef and a piano (p) dynamic marking. The music is in 4/4 time. The first measure contains a melodic line with a slur and a circled number 2. The second measure contains a melodic line with a slur and a circled number 3. The third measure contains a melodic line with a slur and a circled number 4. The fourth measure contains a melodic line with a slur and a circled number 5. The fifth measure contains a melodic line with a slur and a circled number 6. The sixth measure contains a melodic line with a slur and a circled number 7. The seventh measure contains a melodic line with a slur and a circled number 8. The eighth measure contains a melodic line with a slur and a circled number 9. The ninth measure contains a melodic line with a slur and a circled number 10. The tenth measure contains a melodic line with a slur and a circled number 11. The bass line consists of chords in the left hand, with a circled number 2 at the end.

Handwritten musical score for the third system. It features a treble clef and a piano (p) dynamic marking. The music is in 4/4 time. The first measure contains a melodic line with a slur and a circled number 3. The second measure contains a melodic line with a slur and a circled number 4. The third measure contains a melodic line with a slur and a circled number 5. The fourth measure contains a melodic line with a slur and a circled number 6. The fifth measure contains a melodic line with a slur and a circled number 7. The sixth measure contains a melodic line with a slur and a circled number 8. The seventh measure contains a melodic line with a slur and a circled number 9. The eighth measure contains a melodic line with a slur and a circled number 10. The ninth measure contains a melodic line with a slur and a circled number 11. The tenth measure contains a melodic line with a slur and a circled number 12. The bass line consists of chords in the left hand, with a circled number 3 at the end.

④

Handwritten musical score for system 4, consisting of three staves. The top staff is in treble clef and contains a circled '4' at the end. The middle and bottom staves are in bass clef. The music includes various notes, rests, and dynamic markings such as 'f'.

⑤

Handwritten musical score for system 5, consisting of three staves. The top staff is in treble clef and contains a circled '5' at the end. The middle and bottom staves are in bass clef. The music features complex rhythmic patterns and dynamic markings.

⑥

Handwritten musical score for system 6, consisting of three staves. The top staff is in treble clef and contains a circled '6' at the end. The middle and bottom staves are in bass clef. The music is highly complex with many notes and dynamic markings.

7

Handwritten musical score for system 7. The top staff is for guitar, showing a sequence of chords and melodic lines. The bottom two staves are for piano, with the left hand playing chords and the right hand playing chords and melodic lines. The system is divided into four measures.

8

Handwritten musical score for system 8. The top staff is for guitar, starting with a circled '8' and showing a sequence of chords and melodic lines. The bottom two staves are for piano, with the left hand playing chords and the right hand playing chords and melodic lines. The system is divided into four measures.

9

Handwritten musical score for system 9. The top staff is for guitar, starting with a circled '9' and showing a sequence of chords and melodic lines. The bottom two staves are for piano, with the left hand playing chords and the right hand playing chords and melodic lines. The system is divided into four measures. The word "dim" is written in the piano part, and "(poco rit)" is written above the guitar part in the second measure.

*staccato pediger*

*staccato in Anfangstempo*

capo ① (except)

14

GDA

(2nd pit)

*fz* (Cello Solo)

*ff* *pizz* *arco*

(accel.)

*ff* *pizz* *arco*

(fz)

*ff* *arco* C#11 C#111

*lento*

*ff*

*f* *D.C.* *Part 2*

*ad* *CODA*

♯ (mode. accret) (47) wiederholen

Handwritten musical score for the first system. It consists of three staves: a top staff for guitar (treble clef), a middle staff for piano (treble clef), and a bottom staff for piano (bass clef). The guitar part has a circled sharp sign (♯) and a circled sharp sign (♯) in the first two measures. The piano part has a circled sharp sign (♯) in the first measure. The notation includes chords, arpeggios, and melodic lines. A 'Pizz' marking is present in the guitar part.

Handwritten musical score for the second system. It consists of three staves: a top staff for guitar (treble clef), a middle staff for piano (treble clef), and a bottom staff for piano (bass clef). The guitar part starts with the word 'arco' and features a circled sharp sign (♯) in the first measure. The piano part has a circled sharp sign (♯) in the first measure. The notation includes chords, arpeggios, and melodic lines.

Handwritten musical score for the third system. It consists of three staves: a top staff for guitar (treble clef), a middle staff for piano (treble clef), and a bottom staff for piano (bass clef). The guitar part has a circled sharp sign (♯) in the first measure and a circled sharp sign (♯) in the second measure. The piano part has a circled sharp sign (♯) in the first measure and a circled sharp sign (♯) in the second measure. The notation includes chords, arpeggios, and melodic lines. A '1969' date is written in the top right corner.