

Notenheft

Improvisationen
über eine Melodie (1607)
für die Orgel

1969 Adolf Schubert

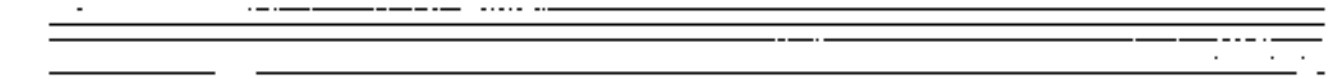
Es ist der Morgensterne -
der leuchtet mit hellen Schein -
es wecket uns mit Gesange -
der Allerliebste mein -
der Allerliebste mein -

viel langsamer (auf b. Höhe)

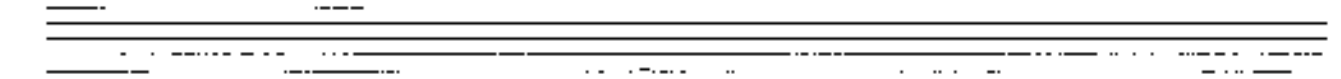
Handwritten musical notation for the first system. The treble clef staff contains a melodic line with notes G4, A4, B4, C5, B4, A4, G4, and F4, with a slur over the first four notes. The bass clef staff contains a bass line with notes G3, F3, E3, D3, C3, and B2, with a slur over the first four notes. Dynamics include 'pp' in both staves.

Handwritten musical notation for the second system. The treble clef staff continues the melodic line with notes G4, F4, E4, D4, C4, and B3, with a slur over the first four notes. The bass clef staff continues the bass line with notes G3, F3, E3, D3, C3, and B2, with a slur over the first four notes.

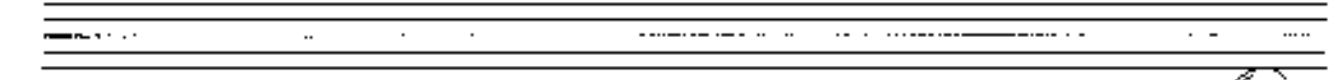
Handwritten musical notation for the third system. The treble clef staff contains notes G4, F4, E4, D4, and C4, with a slur over the first three notes and a circled '1' at the end. The bass clef staff contains notes G3, F3, E3, D3, and C3, with a slur over the first three notes.



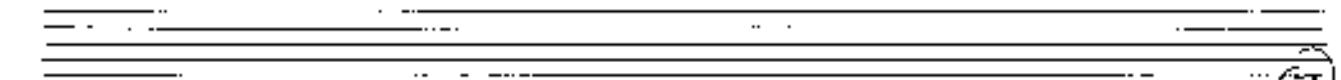
Handwritten musical notation for the first system. It consists of two staves. The upper staff is in treble clef and contains a melodic line with notes G4, A4, B4, C5, and D5, with various accidentals and slurs. The lower staff is in bass clef and contains a bass line with notes D3, G2, F2, and E2, with slurs and dynamics like *q'*.



Handwritten musical notation for the second system. It consists of two staves. The upper staff is in treble clef with notes G4, A4, B4, and C5. The lower staff is in bass clef with notes D3, G2, F2, and E2. Dynamics like *q'* are present.



Handwritten musical notation for the third system, marked with a circled '2' in the top right. It consists of two staves. The upper staff is in treble clef with a more complex melodic line. The lower staff is in bass clef with notes D3, G2, and F2. Dynamics like *q'* and *p'* are present.



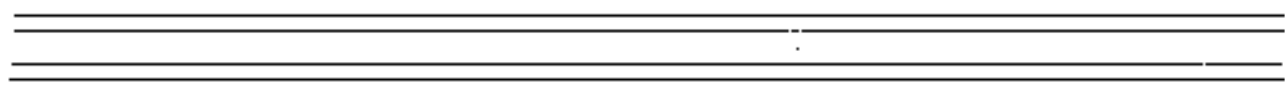
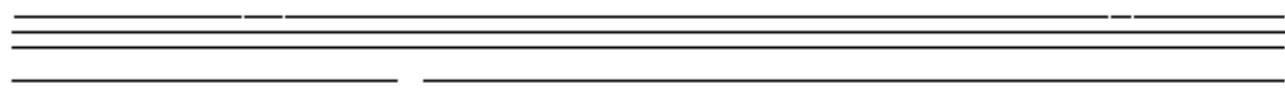
Handwritten musical notation for the fourth system, marked with a circled '3' in the top right. It consists of two staves. The upper staff is in treble clef with notes G4, A4, B4, and C5. The lower staff is in bass clef with notes D3, G2, and F2. The text "großen Mit..." is written in the lower staff. Dynamics like *q'* and *p'* are present.

ruhig schreiben

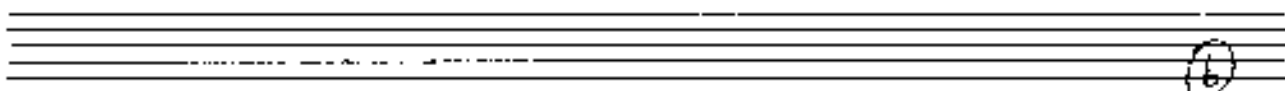
Handwritten musical notation for the first system, measures 1 and 2. The music is written on a grand staff with treble and bass clefs. The key signature has one flat (B-flat). The time signature is 4/4. The first measure contains a piano (p) dynamic marking. The notation includes quarter notes, eighth notes, and sixteenth notes, with slurs and accents.

Handwritten musical notation for the second system, measures 3 and 4. The notation continues from the first system, featuring similar rhythmic patterns and melodic lines in both hands.

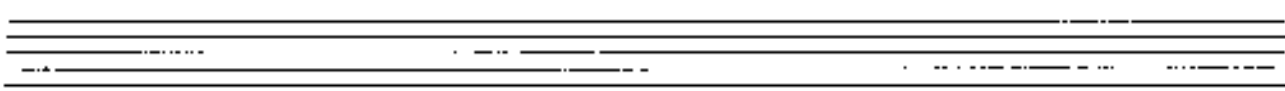
Handwritten musical notation for the third system, measures 5 and 6. The notation continues from the second system, showing further development of the musical themes.



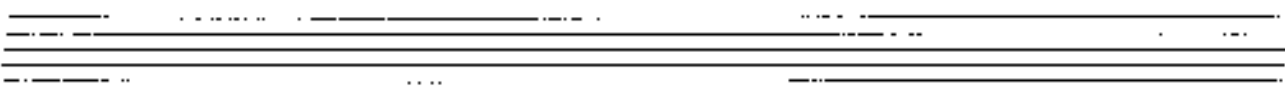
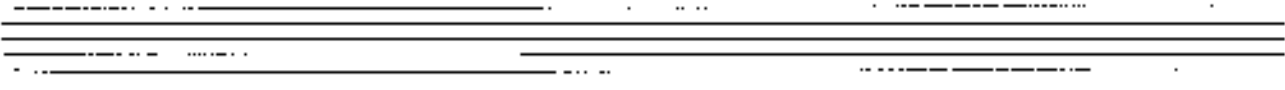
Handwritten musical notation for the first system. The upper staff contains a melodic line with eighth and sixteenth notes, some beamed together, and slurs. The lower staff contains a bass line with quarter notes and slurs. The system is divided into two measures by a vertical bar line.



Handwritten musical notation for the second system. The upper staff continues the melodic line with slurs and slanted stems. The lower staff continues the bass line with slurs. A circled 'b' is written on the right side of the staff. The system is divided into two measures.



Handwritten musical notation for the third system. The upper staff features a melodic line with slurs and slanted stems. The lower staff contains a complex bass line with many beamed notes and slurs. The system is divided into two measures.



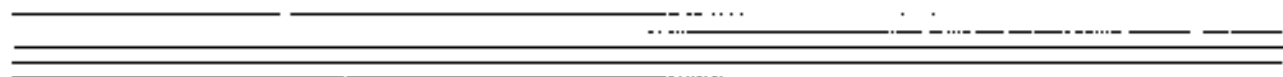
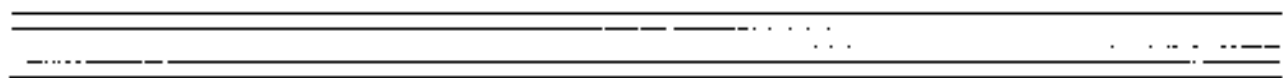
7

Handwritten musical notation for the first system, measures 1-2. The top staff is in treble clef with a key signature of one flat (B-flat). The bottom staff is in bass clef. Both staves feature a melodic line with a slur and a bass line with chords and a slur. The notation includes various accidentals and dynamics.

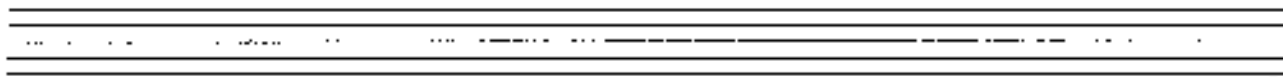
Handwritten musical notation for the second system, measures 3-4. The top staff is in treble clef with a key signature of one flat (B-flat). The bottom staff is in bass clef. Both staves feature a melodic line with a slur and a bass line with chords and a slur. The notation includes various accidentals and dynamics.

8

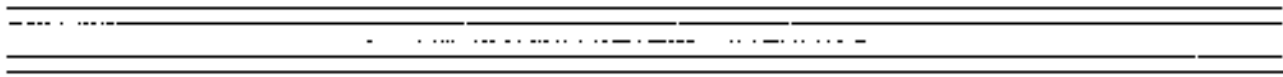
Handwritten musical notation for the third system, measures 5-6. The top staff is in treble clef with a key signature of one flat (B-flat). The bottom staff is in bass clef. The notation includes a melodic line with a slur and a bass line with chords and a slur. The notation includes various accidentals and dynamics.



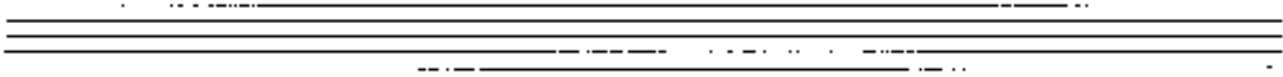
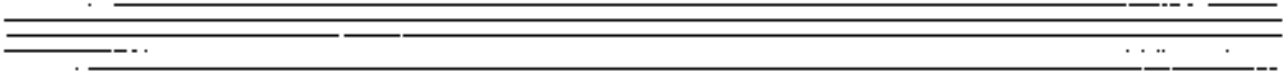
Handwritten musical notation for measures 7 and 8. The notation is written on a grand staff (treble and bass clefs). Measure 7 features a melodic line in the treble clef with notes G4, A4, B4, and C5, and a bass line with a series of eighth notes. Measure 8 continues the melodic line with notes B4, A4, G4, and F4, and a bass line with eighth notes. The piece concludes with a double bar line.



Handwritten musical notation for measure 9, marked with a circled '9' at the end. The notation is on a grand staff. The treble clef contains a half note G4 with a fermata, and the bass clef contains a half note G3 with a fermata. The measure ends with a double bar line.



Handwritten musical notation for measure 10, marked with a circled '10' at the end. The notation is on a grand staff. The treble clef contains a half note G4 with a fermata, and the bass clef contains a half note G3 with a fermata. The measure ends with a double bar line.



10 *ad libitum* *sub brevis* 11

12

13

Handwritten musical score for measures 14 and 15. The notation is in treble and bass clefs. Measure 14 contains notes: b^{\flat} , b^{\flat} , d^{\flat} , b^{\flat} , d^{\flat} . Measure 15 contains notes: b^{\flat} , d^{\flat} , d^{\flat} , b^{\flat} , d^{\flat} . The piece concludes with a double bar line and a fermata.

Handwritten musical score for measures 16 and 17. The notation is in treble and bass clefs. Measure 16 contains notes: d^{\flat} , d^{\flat} , d^{\flat} , d^{\flat} , d^{\flat} . Measure 17 contains notes: d^{\flat} , d^{\flat} , d^{\flat} , d^{\flat} , d^{\flat} . The piece concludes with a double bar line and a fermata.

Handwritten musical score for measure 18. The notation is in treble and bass clefs. Measure 18 contains notes: b^{\flat} , b^{\flat} , d^{\flat} , b^{\flat} , d^{\flat} . The piece concludes with a double bar line and a fermata.

16

Moderato

Handwritten musical notation for measures 16 and 17. The system consists of two staves. The upper staff is in treble clef with a key signature of one sharp (F#) and a 4/4 time signature. It contains two measures of music with half notes and a slur. The lower staff is in bass clef and contains two measures of music with quarter notes and a slur. A circled measure number '16' is written in the first measure of the upper staff.

17

Handwritten musical notation for measures 18 and 19. The system consists of two staves. The upper staff is in treble clef with a key signature of one sharp (F#) and a 4/4 time signature. It contains two measures of music with half notes and a slur. The lower staff is in bass clef and contains two measures of music with quarter notes and a slur. A circled measure number '17' is written in the first measure of the upper staff.

18

Handwritten musical notation for measures 20 and 21. The system consists of two staves. The upper staff is in treble clef with a key signature of one sharp (F#) and a 4/4 time signature. It contains two measures of music with half notes and a slur. The lower staff is in bass clef and contains two measures of music with quarter notes and a slur. A circled measure number '18' is written in the first measure of the upper staff.

Handwritten musical notation on a grand staff. The upper staff contains a melodic line with notes, accidentals, and slurs. The lower staff contains a bass line with notes and accidentals. The system is enclosed in a dashed-line box.

Handwritten musical notation on a grand staff, continuing the piece. The upper staff features a melodic line with a circled measure at the end. The lower staff contains a bass line. The system is enclosed in a dashed-line box.

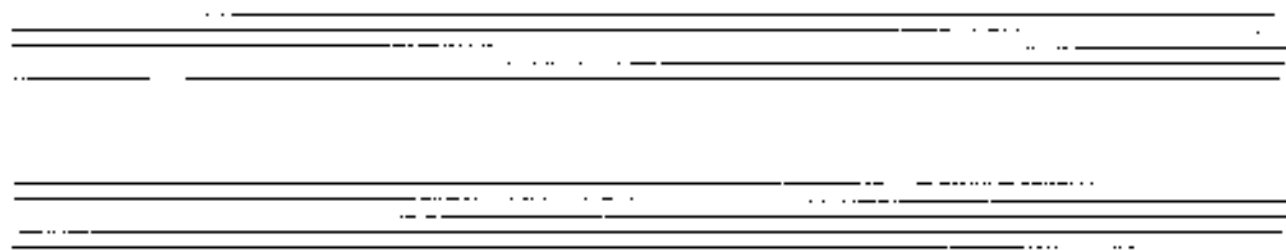
Handwritten musical notation on a grand staff, continuing the piece. The upper staff features a melodic line with notes and slurs. The lower staff contains a bass line. The system is enclosed in a dashed-line box.

Two empty grand staves at the bottom of the page, consisting of five-line staves with a dashed midline.

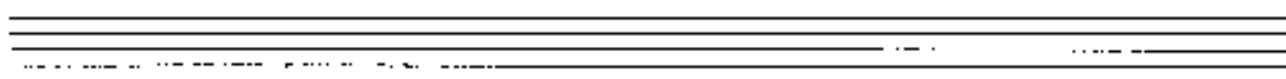
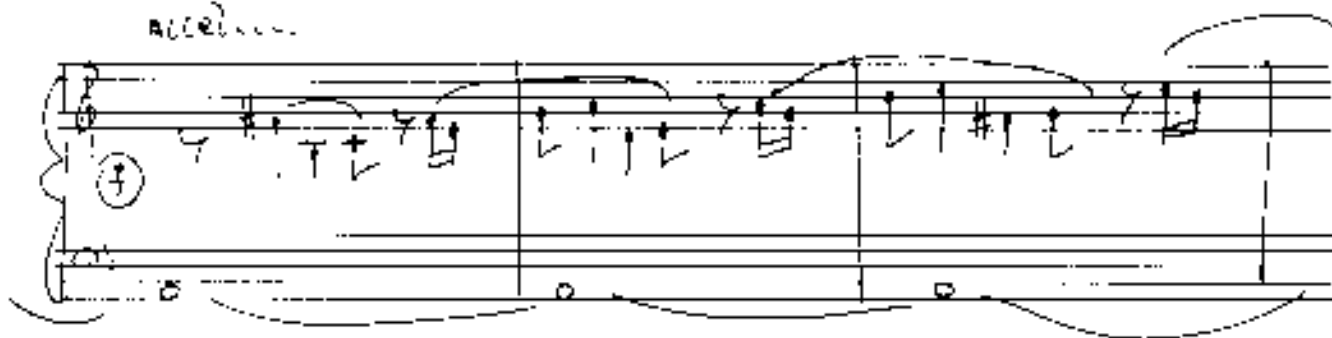
Handwritten musical score for measures 20-21. Measure 20 shows a piano introduction with a treble clef, a key signature of one flat, and a 3/4 time signature. The right hand has a half note chord (F4, A4) and a quarter note (C5). The left hand has a half note chord (F2, A2). Measure 21 continues with similar chords and a melodic line in the right hand. A circled '20' is at the end of the system.

Handwritten musical score for measures 22-23. Measure 22 includes the instruction "Cresc... <" with an arrow pointing left. The right hand has a half note chord (F4, A4) and a quarter note (C5). The left hand has a half note chord (F2, A2). Measure 23 continues with similar chords and a melodic line in the right hand. A circled '21' is at the end of the system.

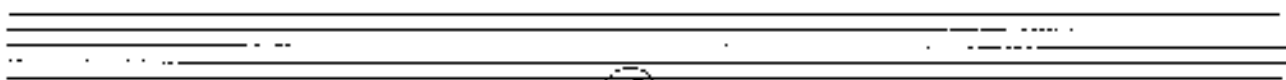
Handwritten musical score for measures 24-25. Measure 24 includes the instruction "up = <" with an arrow pointing left. The right hand has a half note chord (F4, A4) and a quarter note (C5). The left hand has a half note chord (F2, A2). Measure 25 continues with similar chords and a melodic line in the right hand. A circled '22' is at the end of the system.



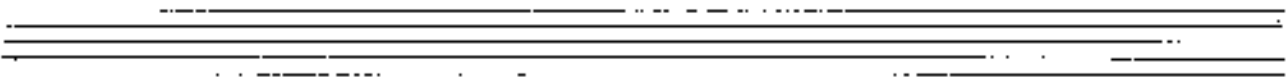
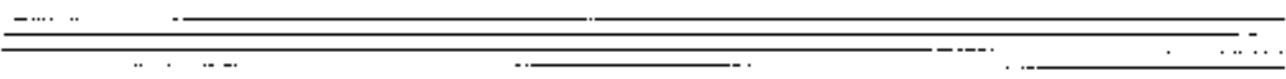
accelerando

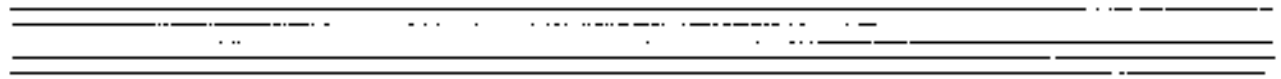


accel.

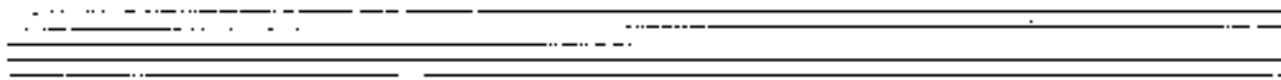
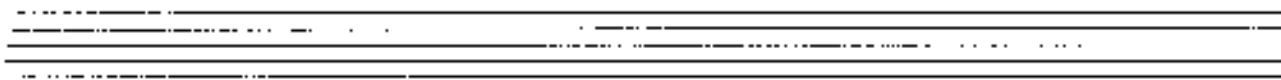
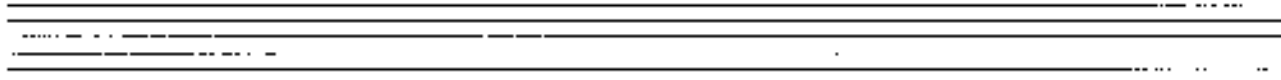
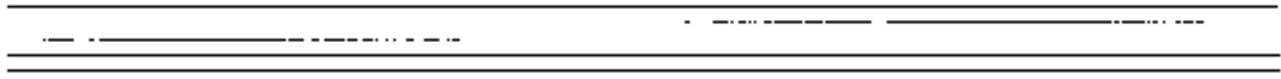


(23)





Flügelhorn (auf 2)



25

26

27

Handwritten musical notation for measures 27 and 28. The notation is written on a grand staff (treble and bass clefs). Measure 27 contains a complex melodic line in the treble clef with many accidentals and a long slur. The bass clef has a few notes with accidentals. Measure 28 shows a continuation of the melodic line in the treble clef. A circled number '27' is at the beginning and a circled number '28' is at the end. Below the staff, there is a handwritten sequence of notes: $\text{— } \text{3 } \text{4 } \text{9 } \text{—}$.

Handwritten musical notation for measures 29 and 30. The notation is written on a grand staff. Measure 29 features a long slur over the treble clef staff. Measure 30 continues the melodic line. A circled number '29' is at the end of the first system and a circled number '30' is at the end of the second system. Below the staff, there is a handwritten sequence of notes: $\text{— } \text{3 } \text{4 } \text{9 } \text{—}$.

Handwritten musical notation for measures 31 and 32. The notation is written on a grand staff. Measure 31 contains a complex melodic line in the treble clef with many accidentals and a long slur. The bass clef has a few notes with accidentals. Measure 32 shows a continuation of the melodic line in the treble clef. A circled number '31' is at the end of the first system and a circled number '32' is at the end of the second system. Below the staff, there is a handwritten sequence of notes: $\text{— } \text{3 } \text{4 } \text{9 } \text{—}$.

Two empty grand staves (treble and bass clefs) for musical notation.

Handwritten musical score for measures 31 and 32. The score is written on a grand staff (treble and bass clefs). Measure 31 features a melodic line in the treble clef starting with a flat (b) and a sharp (#) on the first two notes, followed by a dotted quarter note and an eighth note. The bass clef accompaniment consists of a series of chords. Measure 32 continues the melodic line with a dotted quarter note and an eighth note, followed by a quarter note. The bass clef accompaniment continues with chords. A circled number '31' is in the top right corner of the first system.

Handwritten musical score for measures 33 and 34. The score is written on a grand staff. Measure 33 features a melodic line in the treble clef starting with a sharp (#) on the first note, followed by a dotted quarter note and an eighth note. The bass clef accompaniment consists of a series of chords. Measure 34 continues the melodic line with a dotted quarter note and an eighth note, followed by a quarter note. The bass clef accompaniment continues with chords. A circled number '32' is in the top right corner of the second system.

Handwritten musical score for measures 35 and 36. The score is written on a grand staff. Measure 35 features a melodic line in the treble clef starting with a sharp (#) on the first note, followed by a dotted quarter note and an eighth note. The bass clef accompaniment consists of a series of chords. Measure 36 continues the melodic line with a dotted quarter note and an eighth note, followed by a quarter note. The bass clef accompaniment continues with chords. A circled number '33' is in the top right corner of the third system.

Handwritten musical notation for system 33. The system consists of two staves. The top staff contains a melodic line with notes and accidentals, including a circled '33' at the beginning and a circled '34' at the end. The bottom staff contains a bass line with notes and accidentals. A large bracket spans across both staves, and there are various musical markings such as slurs and accidentals throughout the system.

Handwritten musical notation for system 35. The system consists of two staves. The top staff contains a melodic line with notes and accidentals, including a circled '35' at the end. The bottom staff contains a bass line with notes and accidentals. A large bracket spans across both staves, and there are various musical markings such as slurs and accidentals throughout the system.

Handwritten musical notation for system 36. The system consists of two staves. The top staff contains a melodic line with notes and accidentals, including a circled '36' at the end. The bottom staff contains a bass line with notes and accidentals. A large bracket spans across both staves, and there are various musical markings such as slurs and accidentals throughout the system.

Handwritten musical notation for system 39. The system consists of two staves. The top staff is in treble clef and the bottom staff is in bass clef. The music is in 4/4 time. The first measure contains a half note chord with notes G4 and B4 in the treble and G2 and B2 in the bass. The second measure contains a half note chord with notes A4 and C5 in the treble and A2 and C3 in the bass. The third measure contains a half note chord with notes B4 and D5 in the treble and B2 and D3 in the bass. The fourth measure contains a half note chord with notes C5 and E5 in the treble and C3 and E3 in the bass. The system is marked with a circled '39' at the beginning and a circled '40' at the end.

Handwritten musical notation for system 40. The system consists of two staves. The top staff is in treble clef and the bottom staff is in bass clef. The music is in 4/4 time. The first measure contains a half note chord with notes D5 and F5 in the treble and D2 and F2 in the bass. The second measure contains a half note chord with notes E5 and G5 in the treble and E2 and G2 in the bass. The third measure contains a half note chord with notes F5 and A5 in the treble and F2 and A2 in the bass. The fourth measure contains a half note chord with notes G5 and B5 in the treble and G2 and B2 in the bass. The system is marked with a circled '40' at the end.

Handwritten musical notation for system 41. The system consists of two staves. The top staff is in treble clef and the bottom staff is in bass clef. The music is in 4/4 time. The first measure contains a half note chord with notes A5 and C6 in the treble and A2 and C3 in the bass. The second measure contains a half note chord with notes B5 and D6 in the treble and B2 and D3 in the bass. The third measure contains a half note chord with notes C6 and E6 in the treble and C3 and E3 in the bass. The fourth measure contains a half note chord with notes D6 and F6 in the treble and D3 and F3 in the bass. The system is marked with a boxed '41' at the end.

pro. post-entando

so weit als möglich (up)

Handwritten musical notation for the first system. It consists of two staves with notes and rests, and a lower staff with a long note. The notes are marked with 'b' and 'q'. There are also some handwritten annotations like '33' and '33'.

Handwritten musical notation for the second system. It consists of two staves with notes and rests, and a lower staff with notes and rests. The notes are marked with 'b' and 'q'. There are also some handwritten annotations like '33' and '33'. The word 'Lungen' is written at the bottom right.