

Notenheft

Fantasia in Cis

für Orgel und Bläserensemble

1969

Adolf Scherbaum

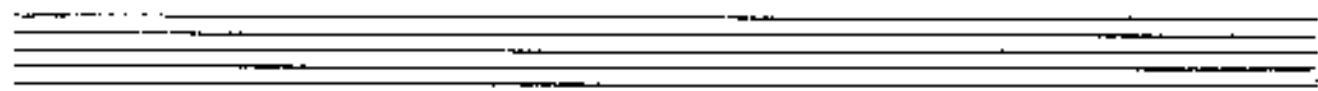
Besetzung: Orgel Solo

4 Trompeten

4 Hörner

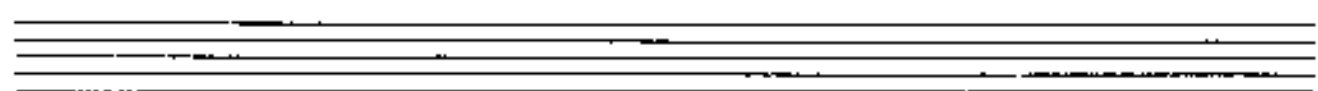
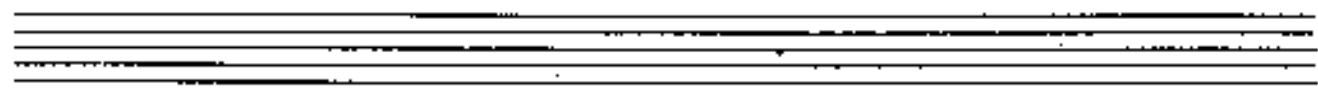
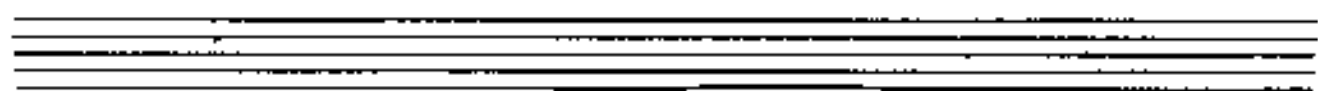
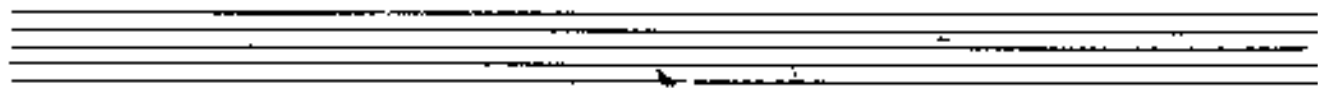
3 Posaunen

Tuba



Andante (ritardando)

Organ Solo



Handwritten musical notation for the first system. The treble staff contains a melodic line with notes: G4 (sharp), A4, B4, C5, B4, A4, G4, F4, E4, D4, C4. The bass staff contains a bass line with notes: G2, F2, E2, D2, C2, B1, A1, G1, F1, E1, D1, C1. There are slurs over the first two measures and the last two measures of the bass line.

Handwritten musical notation for the second system. A circled '1' is written above the treble staff. The treble staff contains notes: G4 (sharp), A4, B4, C5, B4, A4, G4, F4, E4, D4, C4. The bass staff contains notes: G2, F2, E2, D2, C2, B1, A1, G1, F1, E1, D1, C1. There are slurs over the first two measures and the last two measures of the bass line.

Handwritten musical notation for the third system. The treble staff contains notes: G4 (sharp), A4, B4, C5, B4, A4, G4, F4, E4, D4, C4. The bass staff contains notes: G2, F2, E2, D2, C2, B1, A1, G1, F1, E1, D1, C1. There are slurs over the first two measures and the last two measures of the bass line.

Handwritten musical notation for the fourth system. The treble staff contains notes: G4 (sharp), A4, B4, C5, B4, A4, G4, F4, E4, D4, C4. The bass staff contains notes: G2, F2, E2, D2, C2, B1, A1, G1, F1, E1, D1, C1. There are slurs over the first two measures and the last two measures of the bass line.

2

Handwritten musical notation for the first system, measures 1-4. The music is written on two staves (treble and bass clefs). The key signature has one sharp (F#). The melody in the treble clef consists of quarter notes: F#4, G4, A4, B4, C5, B4, A4, G4. The bass clef accompaniment features chords and eighth notes: F#4-G#4, F#4-G#4-A4, F#4-G#4-A4-B4, F#4-G#4-A4-B4. There are some scribbles at the beginning of the first staff.

Handwritten musical notation for the second system, measures 5-8. The melody in the treble clef continues with quarter notes: B4, A4, G4, F#4. The bass clef accompaniment continues with chords and eighth notes: F#4-G#4-A4-B4, F#4-G#4-A4-B4, F#4-G#4-A4-B4, F#4-G#4-A4-B4. There are some scribbles at the beginning of the first staff.

Handwritten musical notation for the third system, measures 9-12. The melody in the treble clef consists of quarter notes: F#4, G4, A4, B4. The bass clef accompaniment features chords and eighth notes: F#4-G#4, F#4-G#4-A4, F#4-G#4-A4-B4, F#4-G#4-A4-B4. There are some scribbles at the beginning of the first staff.

3

Handwritten musical notation for the fourth system, measures 13-16. The melody in the treble clef consists of quarter notes: F#4, G4, A4, B4. The bass clef accompaniment features chords and eighth notes: F#4-G#4, F#4-G#4-A4, F#4-G#4-A4-B4, F#4-G#4-A4-B4. There are some scribbles at the beginning of the first staff.

3 Posunen + 4 Hörner + Tuba

3. Pos + 4 Hörn + Tuba  
(Tuba immer Oktave tiefer notiert.)

4 Hörner

3 Posunen

Handwritten musical score for the first system. The treble clef staff contains a melodic line with notes G4, A4, B4, C5, B4, A4, G4. The bass clef staff contains a bass line with notes G2, A2, B2, C3, B2, A2, G2. Annotations include "3 Posaven" and "4 Hömer".

Handwritten musical score for the second system. The treble clef staff contains a melodic line with notes G4, A4, B4, C5, B4, A4, G4. The bass clef staff contains a bass line with notes G2, A2, B2, C3, B2, A2, G2. Annotation includes "4 Hömer".

Orgel Solo

Handwritten musical score for the third system, labeled "Orgel Solo". The treble clef staff contains a melodic line with notes G4, A4, B4, C5, B4, A4, G4. The bass clef staff contains a bass line with notes G2, A2, B2, C3, B2, A2, G2. Annotations include "Orgel Solo".

Handwritten musical score for the fourth system. The treble clef staff contains a melodic line with notes G4, A4, B4, C5, B4, A4, G4. The bass clef staff contains a bass line with notes G2, A2, B2, C3, B2, A2, G2.

Handwritten musical notation for the first system. The treble clef staff contains a melodic line with notes: G4, A4, Bb4, C5, D5, E5, F#5, G5. The bass clef staff contains a bass line with notes: G2, A2, Bb2, C3, D3, E3, F#3, G3. A large slur covers the entire system.

(6)

Handwritten musical notation for the second system. The treble clef staff contains a melodic line with notes: G#4, A4, B4, C5, D5, E5, F#5, G5. The bass clef staff contains a bass line with notes: G2, A2, Bb2, C3, D3, E3, F#3, G3. A circled measure number '6' is positioned above the first measure.

(7)

Handwritten musical notation for the third system. The treble clef staff contains a melodic line with notes: G#4, A4, B4, C5, D5, E5, F#5, G5. The bass clef staff contains a bass line with notes: G2, A2, Bb2, C3, D3, E3, F#3, G3. A circled measure number '7' is positioned to the right of the system.



Handwritten musical notation on a grand staff. The upper staff is in treble clef with a key signature of one sharp (F#) and a dynamic marking of "pp". The lower staff is in bass clef. A long slur covers the first two measures of the upper staff. The notation includes quarter notes, eighth notes, and sixteenth notes with various accidentals.

Handwritten musical notation on a grand staff. The upper staff is in treble clef with a key signature of one sharp (F#). The lower staff is in bass clef. A long slur covers the first two measures of the upper staff. The notation includes quarter notes, eighth notes, and sixteenth notes with various accidentals.

Handwritten musical notation on a grand staff. The upper staff is in treble clef with a key signature of one sharp (F#). The lower staff is in bass clef. A long slur covers the first two measures of the upper staff. The notation includes quarter notes, eighth notes, and sixteenth notes with various accidentals.

Handwritten musical notation for the first system. The top staff is a treble clef with a key signature of one flat (B-flat) and a 9/8 time signature. The melody consists of two measures, each starting with a quarter note followed by a dotted quarter note, all under a slur. The bottom staff is a grand staff with chords in the left hand.

Handwritten musical notation for the second system. The top staff continues the melody with a slur over two measures, each starting with a B-flat quarter note followed by a dotted quarter note. The bottom staff continues the accompaniment with chords.

Handwritten musical notation for the third system. The top staff continues the melody with a slur over two measures, each starting with a B-flat quarter note followed by a dotted quarter note. The bottom staff continues the accompaniment with chords.

Handwritten musical notation for the fourth system, starting with a circled number 8. The top staff is a treble clef with a key signature of one flat and a 9/8 time signature. The melody consists of two measures, each starting with a quarter note followed by a dotted quarter note, all under a slur. The bottom staff is a grand staff with chords in the left hand.



9

10

(color breit - ausladend) *mp* -

Handwritten musical score for the first system, featuring a grand staff with treble, middle, and bass clefs. The music includes various notes, rests, and dynamic markings. The first measure has a treble clef with a sharp sign and a bass clef with a sharp sign. The second measure has a treble clef with a sharp sign and a bass clef with a sharp sign. The third measure has a treble clef with a sharp sign and a bass clef with a sharp sign. The fourth measure has a treble clef with a sharp sign and a bass clef with a sharp sign. The fifth measure has a treble clef with a sharp sign and a bass clef with a sharp sign. The sixth measure has a treble clef with a sharp sign and a bass clef with a sharp sign. The seventh measure has a treble clef with a sharp sign and a bass clef with a sharp sign. The eighth measure has a treble clef with a sharp sign and a bass clef with a sharp sign. The ninth measure has a treble clef with a sharp sign and a bass clef with a sharp sign. The tenth measure has a treble clef with a sharp sign and a bass clef with a sharp sign. The eleventh measure has a treble clef with a sharp sign and a bass clef with a sharp sign. The twelfth measure has a treble clef with a sharp sign and a bass clef with a sharp sign. The thirteenth measure has a treble clef with a sharp sign and a bass clef with a sharp sign. The fourteenth measure has a treble clef with a sharp sign and a bass clef with a sharp sign. The fifteenth measure has a treble clef with a sharp sign and a bass clef with a sharp sign. The sixteenth measure has a treble clef with a sharp sign and a bass clef with a sharp sign. The seventeenth measure has a treble clef with a sharp sign and a bass clef with a sharp sign. The eighteenth measure has a treble clef with a sharp sign and a bass clef with a sharp sign. The nineteenth measure has a treble clef with a sharp sign and a bass clef with a sharp sign. The twentieth measure has a treble clef with a sharp sign and a bass clef with a sharp sign.

Handwritten musical score for the second system, featuring a grand staff with treble, middle, and bass clefs. The music includes various notes, rests, and dynamic markings. The first measure has a treble clef with a sharp sign and a bass clef with a sharp sign. The second measure has a treble clef with a sharp sign and a bass clef with a sharp sign. The third measure has a treble clef with a sharp sign and a bass clef with a sharp sign. The fourth measure has a treble clef with a sharp sign and a bass clef with a sharp sign. The fifth measure has a treble clef with a sharp sign and a bass clef with a sharp sign. The sixth measure has a treble clef with a sharp sign and a bass clef with a sharp sign. The seventh measure has a treble clef with a sharp sign and a bass clef with a sharp sign. The eighth measure has a treble clef with a sharp sign and a bass clef with a sharp sign. The ninth measure has a treble clef with a sharp sign and a bass clef with a sharp sign. The tenth measure has a treble clef with a sharp sign and a bass clef with a sharp sign. The eleventh measure has a treble clef with a sharp sign and a bass clef with a sharp sign. The twelfth measure has a treble clef with a sharp sign and a bass clef with a sharp sign. The thirteenth measure has a treble clef with a sharp sign and a bass clef with a sharp sign. The fourteenth measure has a treble clef with a sharp sign and a bass clef with a sharp sign. The fifteenth measure has a treble clef with a sharp sign and a bass clef with a sharp sign. The sixteenth measure has a treble clef with a sharp sign and a bass clef with a sharp sign. The seventeenth measure has a treble clef with a sharp sign and a bass clef with a sharp sign. The eighteenth measure has a treble clef with a sharp sign and a bass clef with a sharp sign. The nineteenth measure has a treble clef with a sharp sign and a bass clef with a sharp sign. The twentieth measure has a treble clef with a sharp sign and a bass clef with a sharp sign.

(Liedes - appoggiatura)

(11) (4 Tromp.)

(4 Hörner) und Orgel

(3 Bass + Tuba)

(12)

ständig  
gelesen werden →

The first system of handwritten musical notation consists of two staves. The upper staff is in treble clef and contains two measures of music. The first measure has a key signature of one sharp (F#) and a common time signature (C). It features a series of notes: F#4, G4, A4, B4, C5, and D5, with a slur over the first four notes. The second measure has a key signature of one flat (Bb) and contains notes: Bb4, C5, D5, and E5, with a slur over the last three notes. The lower staff is in bass clef and contains two measures. The first measure has a key signature of one sharp (F#) and contains notes: F#3, G3, A3, and B3, with a slur over the last three notes. The second measure has a key signature of one flat (Bb) and contains notes: Bb3, C4, D4, and E4, with a slur over the last three notes. There are also some handwritten annotations like '3 3 3' in the first measure of the bass staff.

The second system of handwritten musical notation also consists of two staves. The upper staff is in treble clef and contains two measures. The first measure has a key signature of one sharp (F#) and contains notes: F#4, G4, A4, and B4, with a slur over the last three notes. The second measure has a key signature of one flat (Bb) and contains notes: Bb4, C5, D5, and E5, with a slur over the last three notes. The lower staff is in bass clef and contains two measures. The first measure has a key signature of one sharp (F#) and contains notes: F#3, G3, A3, and B3, with a slur over the last three notes. The second measure has a key signature of one flat (Bb) and contains notes: Bb3, C4, D4, and E4, with a slur over the last three notes.

73

Handwritten musical score for system 73. It consists of three staves. The top staff is in treble clef with a key signature of two sharps (F# and C#) and a common time signature. It features a melodic line with a long slur over the first two measures and some complex rhythmic markings. The middle staff is in treble clef with a key signature of one flat (F) and a common time signature, containing a melodic line with a slur and some rhythmic markings. The bottom staff is in bass clef with a key signature of one flat (F) and a common time signature, featuring a simple bass line with a slur.

*un Orgel Solo*

74

Handwritten musical score for system 74, labeled "un Orgel Solo". It consists of three staves. The top staff is in treble clef with a key signature of one flat (F) and a common time signature, featuring a melodic line with a slur and some rhythmic markings. The middle staff is in treble clef with a key signature of one flat (F) and a common time signature, containing a melodic line with a slur and some rhythmic markings. The bottom staff is in bass clef with a key signature of one flat (F) and a common time signature, featuring a simple bass line with a slur.

*hord*

Handwritten musical score for system 75, labeled "hord". It consists of three staves. The top staff is in treble clef with a key signature of one flat (F) and a common time signature, featuring a melodic line with a slur and some rhythmic markings. The middle staff is in treble clef with a key signature of one flat (F) and a common time signature, containing a melodic line with a slur and some rhythmic markings. The bottom staff is in bass clef with a key signature of one flat (F) and a common time signature, featuring a simple bass line with a slur.



gtr.

15

16

Handwritten musical score for the first system. It consists of three staves. The top staff is in treble clef and contains a melodic line with various accidentals (sharps, flats, naturals) and a long slur. The middle staff is in bass clef and contains a single note with a fermata. The bottom staff is in bass clef and contains a single note with a fermata. To the left of the middle and bottom staves, the numbers "3" and "4" are written vertically.

Handwritten musical score for the second system. It consists of three staves. The top staff is in treble clef and contains a melodic line with various accidentals and a long slur. The middle staff is in bass clef and contains a single note with a fermata. The bottom staff is in bass clef and contains a single note with a fermata.

Handwritten musical score for the third system. It consists of three staves. The top staff is labeled "4 TROMP." and contains a melodic line with notes and slurs. The middle staff is labeled "4 HORN" and contains a melodic line with notes and slurs. The bottom staff is labeled "3 TRS. + Tuba" and contains a melodic line with notes and slurs. The word "breit" is written in the bottom left. A circled number "16" is in the top right corner.

Solo ending - (ppf6)

ppp  
ppp Orgel Solo  
pp

Handwritten musical notation for the first system, featuring a treble clef, a key signature of one sharp (F#), and a 3/4 time signature. The system consists of three staves: the top staff contains a melodic line with eighth and quarter notes, the middle staff contains a bass line with chords and eighth notes, and the bottom staff contains a bass line with chords and eighth notes. A large slur covers the entire system.

Handwritten musical notation for the second system, continuing the piece with the same notation style and structure as the first system. It includes a treble clef, a key signature of one sharp, and a 3/4 time signature, with three staves and a large slur.

Handwritten musical notation for the third system, the final system on the page. It maintains the treble clef, one sharp key signature, and 3/4 time signature, consisting of three staves under a large slur.

Handwritten musical notation for the first system. It consists of three staves. The top staff has a treble clef and begins with a 9-measure rest. The middle staff has a bass clef and contains several notes with accidentals. The bottom staff has a bass clef and contains a few notes with accidentals. A large slur covers the entire system.

Handwritten musical notation for the second system. It consists of three staves. The top staff has a treble clef and contains a series of notes with various accidentals. The middle staff has a bass clef and contains notes with accidentals. The bottom staff has a bass clef and contains notes with accidentals. A large slur covers the entire system.

Handwritten musical notation for the third system. It consists of three staves. The top staff has a treble clef and contains a melodic line with a slur. The middle staff has a bass clef and contains notes with accidentals. The bottom staff has a bass clef and contains notes with accidentals. A large slur covers the entire system.

Handwritten musical notation for the first system. It consists of three staves: a treble clef staff at the top, an alto clef staff in the middle, and a bass clef staff at the bottom. The music is written in a key with one sharp (F#) and a common time signature. The first measure contains notes G4, A4, B4, and C5. The second measure contains notes D5, E5, F#5, and G5. The third measure contains notes G5, F#5, E5, and D5. The fourth measure contains notes C5, B4, A4, and G4. The fifth measure contains notes G4, F#4, E4, and D4. The sixth measure contains notes C4, B3, A3, and G3. The seventh measure contains notes G3, F#3, E3, and D3. The eighth measure contains notes C3, B2, A2, and G2. The ninth measure contains notes G2, F#2, E2, and D2. The tenth measure contains notes C2, B1, A1, and G1. The eleventh measure contains notes G1, F#1, E1, and D1. The twelfth measure contains notes C1, B0, A0, and G0. The system is enclosed in a large, hand-drawn slur.

Handwritten musical notation for the second system. It consists of three staves: a treble clef staff at the top, an alto clef staff in the middle, and a bass clef staff at the bottom. The music is written in a key with one sharp (F#) and a common time signature. The first measure contains notes G4, A4, B4, and C5. The second measure contains notes D5, E5, F#5, and G5. The third measure contains notes G5, F#5, E5, and D5. The fourth measure contains notes C5, B4, A4, and G4. The fifth measure contains notes G4, F#4, E4, and D4. The sixth measure contains notes C4, B3, A3, and G3. The seventh measure contains notes G3, F#3, E3, and D3. The eighth measure contains notes C3, B2, A2, and G2. The ninth measure contains notes G2, F#2, E2, and D2. The tenth measure contains notes C2, B1, A1, and G1. The eleventh measure contains notes G1, F#1, E1, and D1. The twelfth measure contains notes C1, B0, A0, and G0. The system is enclosed in a large, hand-drawn slur.

Handwritten musical notation for the third system. It consists of three staves: a treble clef staff at the top, an alto clef staff in the middle, and a bass clef staff at the bottom. The music is written in a key with one sharp (F#) and a common time signature. The first measure contains notes G4, A4, B4, and C5. The second measure contains notes D5, E5, F#5, and G5. The third measure contains notes G5, F#5, E5, and D5. The fourth measure contains notes C5, B4, A4, and G4. The fifth measure contains notes G4, F#4, E4, and D4. The sixth measure contains notes C4, B3, A3, and G3. The seventh measure contains notes G3, F#3, E3, and D3. The eighth measure contains notes C3, B2, A2, and G2. The ninth measure contains notes G2, F#2, E2, and D2. The tenth measure contains notes C2, B1, A1, and G1. The eleventh measure contains notes G1, F#1, E1, and D1. The twelfth measure contains notes C1, B0, A0, and G0. The system is enclosed in a large, hand-drawn slur.

Handwritten musical notation for the first system, featuring a grand staff with treble, alto, and bass clefs. The music consists of three measures with various notes and accidentals.

Handwritten musical notation for the second system, featuring a grand staff with treble, alto, and bass clefs. The music consists of three measures with various notes and accidentals.

Handwritten musical notation for the third system, featuring a grand staff with treble, alto, and bass clefs. The music consists of three measures with various notes and accidentals.

Handwritten musical score for the first system. It features a treble clef, a key signature of one flat (B-flat), and a 3/4 time signature. The music consists of a melody in the upper voice and a bass line in the lower voice, with a grand staff bracket on the left.

großes mit -----

(17)

Handwritten musical score for the second system, continuing the melody and bass line from the first system. It includes a treble clef, a key signature of one flat, and a 3/4 time signature.

(18)

Handwritten musical score for the third system, featuring a treble clef, a key signature of one flat, and a 3/4 time signature. The music is more complex, with many accidentals and slurs. An "Allegro" marking with an arrow is present at the end of the system.



Contra (H) v. voce - rasol - puzh - (ad. lib. org.)

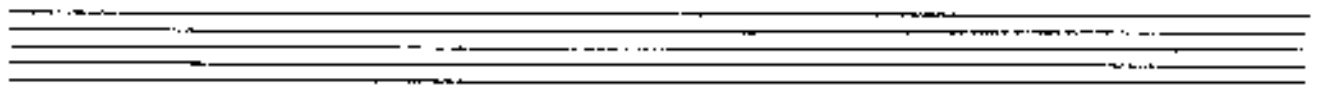
Handwritten musical notation for the first system. It consists of a treble clef staff and a bass clef staff. The treble staff begins with a 6/8 time signature and contains a melodic line with notes and accidentals (flats and sharps). The bass staff contains a bass line with notes and accidentals. A bracket spans across both staves, indicating a phrase. The system concludes with a double bar line.

Handwritten musical notation for the second system. It continues the melodic line in the treble staff and the bass line in the bass staff. The notation includes various note values and accidentals. A bracket spans across both staves. The system concludes with a double bar line.

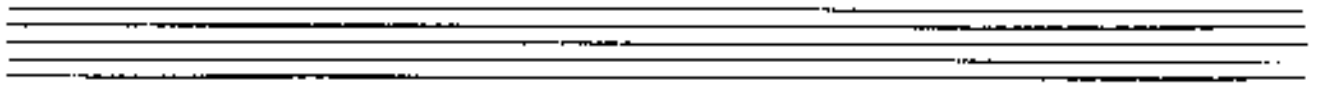
Handwritten musical notation for the third system. The treble staff contains a complex passage with many notes, possibly representing a vocal line or a highly decorated instrumental part. The bass staff continues the bass line. A bracket spans across both staves. The system concludes with a double bar line.

Handwritten musical notation for the fourth system. The treble staff contains a series of chords, possibly representing a keyboard accompaniment. The bass staff continues the bass line. A bracket spans across both staves. The system concludes with a double bar line.

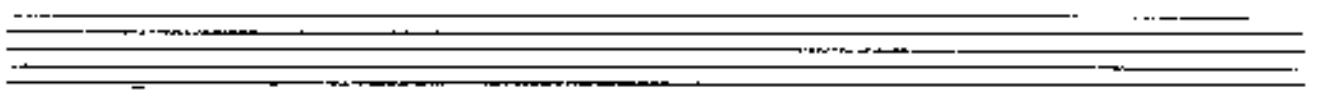
19



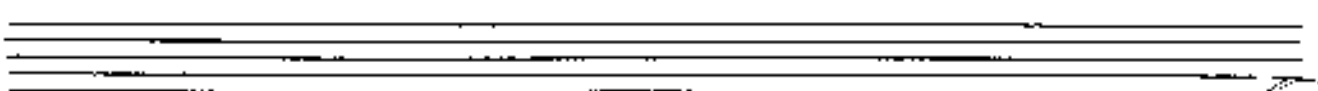
Handwritten musical notation on a grand staff. The right hand (treble clef) features a sequence of six chords, each with a '7' above it, indicating seventh chords. The left hand (bass clef) has a melodic line with notes including a sharp sign (F#) and a flat sign (Bb). The system concludes with a double bar line and repeat signs on both staves.



Handwritten musical notation on a grand staff. The right hand (treble clef) features a sequence of six chords, each with a '7' above it. The left hand (bass clef) has a melodic line with notes including a sharp sign (F#) and a flat sign (Bb). The system concludes with a double bar line and repeat signs on both staves.



Handwritten musical notation on a grand staff. The right hand (treble clef) features a sequence of six chords with various notes and accidentals. The left hand (bass clef) has a melodic line with notes including a sharp sign (F#) and a flat sign (Bb). The system concludes with a double bar line and repeat signs on both staves.



Handwritten musical notation on a grand staff. The right hand (treble clef) features a sequence of six chords, each with a '7' above it. The left hand (bass clef) has a melodic line with notes including a sharp sign (F#) and a flat sign (Bb). The system concludes with a double bar line and repeat signs on both staves.

20

25

Handwritten musical notation for the first system. The treble clef staff contains a series of chords, each marked with a '7' and a flat symbol (b). The bass clef staff contains a melodic line with notes and accidentals.

Handwritten musical notation for the second system. The treble clef staff contains a series of chords, each marked with a '7' and a flat symbol (b). The bass clef staff contains a melodic line with notes and accidentals.

Handwritten musical notation for the third system. The treble clef staff contains a series of chords, each marked with a '7' and a flat symbol (b). The bass clef staff contains a melodic line with notes and accidentals.

Handwritten musical notation for the fourth system. The treble clef staff contains a series of chords, each marked with a '7' and a flat symbol (b). The bass clef staff contains a melodic line with notes and accidentals.

Handwritten musical notation for the first system. The treble clef staff contains a series of chords, each with a 'y' symbol above it, indicating a specific fingering or articulation. The bass clef staff contains a melodic line with notes and stems.

Handwritten musical notation for the second system. The treble clef staff contains chords with 'y' symbols. The bass clef staff contains a melodic line. The instruction "(poco rit)" is written above the treble staff. A circled page number "21" is located in the upper right corner.

meno (leg. solo (danza) / solo molto appassionato)

Handwritten musical notation for the third system. The grand staff features a complex melodic line in the treble clef with many notes and slurs. The bass clef staff contains a single note with a long horizontal line underneath it, possibly indicating a sustained bass note or a specific performance instruction.

Handwritten musical score for the first system. The top staff is in treble clef with a key signature of one flat and a 4/4 time signature. A slur covers the first two measures of the treble staff. The grand staff below contains piano accompaniment with a key signature of one flat and a 4/4 time signature.

Handwritten musical score for the second system. The top staff is in treble clef with a key signature of one flat and a 4/4 time signature. A slur covers the first two measures of the treble staff. The grand staff below contains piano accompaniment with a key signature of one flat and a 4/4 time signature.

Handwritten musical score for the third system. The top staff is in treble clef with a key signature of two sharps and a 4/4 time signature. A slur covers the first two measures of the treble staff. The grand staff below contains piano accompaniment with a key signature of two sharps and a 4/4 time signature. The text "4 Kora. + 3 Pos + Tuba" is written above the piano part.

Handwritten musical score system 1. The system consists of three staves. The top staff is a treble clef with a key signature of one flat (Bb) and a melodic line of eighth notes. The middle staff is an alto clef with a key signature of one flat (Bb) and a melodic line of eighth notes. The bottom staff is a bass clef with a key signature of one flat (Bb) and a melodic line of eighth notes. A bracket labeled "Blessed" spans the first two staves. A vertical line separates the system into two measures.

Handwritten musical score system 2. The system consists of three staves. The top staff is a treble clef with a key signature of two flats (Bb, Eb) and a melodic line of eighth notes. The middle staff is an alto clef with a key signature of two flats (Bb, Eb) and a melodic line of eighth notes. The bottom staff is a bass clef with a key signature of two flats (Bb, Eb) and a melodic line of eighth notes. A vertical line separates the system into two measures.

Handwritten musical score system 3. The system consists of three staves. The top staff is a treble clef with a key signature of one flat (Bb) and a melodic line of eighth notes. The middle staff is an alto clef with a key signature of one flat (Bb) and a melodic line of eighth notes. The bottom staff is a bass clef with a key signature of one flat (Bb) and a melodic line of eighth notes. A bracket labeled "Blessed" spans the first two staves. A vertical line separates the system into two measures.

Grotesque

Handwritten musical score for page 22. The top staff is in treble clef with a key signature of one sharp (F#) and a common time signature (C). It contains a melodic line with eighth and sixteenth notes. The bottom staff is in bass clef with a key signature of one sharp (F#) and a common time signature (C), featuring a simple accompaniment with quarter notes.

(oda fair - except)

Handwritten musical score for page 22. The top staff is in treble clef with a key signature of one sharp (F#) and a common time signature (C). It contains a complex melodic line with triplets and slurs. The bottom staff is in bass clef with a key signature of one sharp (F#) and a common time signature (C), featuring a simple accompaniment with quarter notes.

Ongel Kadenz)

Handwritten musical score for page 23. The top staff is in treble clef with a key signature of one sharp (F#) and a common time signature (C). It contains a complex melodic line with many slurs and ties. The bottom staff is in bass clef with a key signature of one sharp (F#) and a common time signature (C), featuring a simple accompaniment with quarter notes.

5-7 Sekunden.....

*Ande*  
*breve*  $\frac{3}{4}$

4 Bremsen  
 4 Hölzer (+ Orgel)  
 3 Holz + Fagel

(24)

Orgel solo

*Ev. nitendando...*

(25)



Handwritten musical score for two staves. The top staff is in treble clef and the bottom in bass clef. Both staves contain notes with accidentals (sharps) and slurs. The bottom staff has a 'p' dynamic marking.

Handwritten musical score for four staves. The top two staves are in treble clef, and the bottom two are in bass clef. The score includes a section marked "Cuzga" and another marked "Cuz" with a circled "2b". There are also some scribbled-out notes and a signature-like scribble.