

Fantasia für
Viola 1969

Notenheft ~~Friedrich~~
Schubert

Fantasie
für große
Orgel

1869
Anton Bruckner

Fantasia für große Orgel

rubato (Mod.)

moderato (nicht schleppen)

The first system of the handwritten musical score consists of three staves. The top staff is a treble clef with a key signature of one sharp (F#) and a common time signature (C). It contains a whole rest in the first measure, followed by a slur over four eighth notes in the second measure: F#4, G4, A4, and B4. The middle staff is an alto clef with a key signature of one sharp (F#) and a common time signature (C). It contains a whole rest in the first measure, followed by a slur over four eighth notes in the second measure: F#3, G3, A3, and B3. The bottom staff is a bass clef with a key signature of one sharp (F#) and a common time signature (C). It contains a whole rest in the first measure, followed by a slur over two whole notes in the second measure: F#2 and G2. The dynamic marking 'ff' is written above the first measure of the top staff.

The second system of the handwritten musical score consists of three staves. The top staff is a treble clef with a key signature of one sharp (F#) and a common time signature (C). It contains a whole note F#4 in the first measure, followed by a whole note G4 in the second measure. The middle staff is an alto clef with a key signature of one sharp (F#) and a common time signature (C). It contains a slur over four eighth notes in the first measure: F#3, G3, A3, and B3, followed by a slur over four eighth notes in the second measure: F#3, G3, A3, and B3. The bottom staff is a bass clef with a key signature of one sharp (F#) and a common time signature (C). It contains a whole note F#2 in the first measure, followed by a whole note G2 in the second measure.

Handwritten musical notation for the first system. The system consists of three staves: treble, alto, and bass clefs. The treble clef has a key signature of one sharp (F#) and a common time signature. The music is written in two measures. The first measure contains a treble clef, a sharp sign, and a whole note. The second measure contains a whole note. The alto and bass staves have notes with slurs and ties.

Handwritten musical notation for the second system. The system consists of three staves: treble, alto, and bass clefs. The treble clef has a key signature of one flat (Bb) and a common time signature. The music is written in two measures. The first measure contains a treble clef, a flat sign, and a whole note. The second measure contains a whole note. The alto and bass staves have notes with slurs and ties.

Handwritten musical notation for the third system. The system consists of three staves: treble, alto, and bass clefs. The treble clef has a key signature of one sharp (F#) and a common time signature. The music is written in two measures. The first measure contains a treble clef, a sharp sign, and a whole note. The second measure contains a whole note. The alto and bass staves have notes with slurs and ties.

Handwritten musical notation for the first system. It consists of three staves. The top staff has a treble clef and a key signature of one flat (B-flat). The melody begins with a half note B-flat, followed by a whole note G. The middle staff contains a piano accompaniment with eighth notes and slurs. The bottom staff has a bass clef and a key signature of one flat, with a half note B-flat and a whole note G. The system is divided into two measures by a vertical bar line.

Handwritten musical notation for the second system. It consists of three staves. The top staff has a treble clef and a key signature of one flat. The melody continues with a half note G, followed by a whole note F. The middle staff contains a piano accompaniment with eighth notes and slurs. The bottom staff has a bass clef and a key signature of one flat, with a half note F and a whole note E. The system is divided into two measures by a vertical bar line.

Handwritten musical notation for the third system. It consists of three staves. The top staff has a treble clef and a key signature of two sharps (F# and C#). The melody begins with a half note F#, followed by a whole note E. The middle staff contains a piano accompaniment with eighth notes and slurs. The bottom staff has a bass clef and a key signature of two sharps, with a half note F# and a whole note E. The system is divided into two measures by a vertical bar line.

Handwritten musical score for the first system. The system consists of a grand staff with treble and bass clefs. The key signature is one sharp (F#) and the time signature is common time (C). The music is written in two measures. The upper staff contains a melodic line with eighth and quarter notes, and the lower staff contains a bass line with half notes. A dashed line above the staff indicates a slur or breath mark.

Handwritten musical score for the second system. The system consists of a grand staff with treble and bass clefs. The key signature is one sharp (F#) and the time signature is common time (C). The music is written in two measures. The upper staff contains a melodic line with eighth and quarter notes, and the lower staff contains a bass line with half notes. A dashed line above the staff indicates a slur or breath mark.

Handwritten musical score for the third system. The system consists of a grand staff with treble and bass clefs. The key signature is one sharp (F#) and the time signature is common time (C). The music is written in two measures. The upper staff contains a melodic line with eighth and quarter notes, and the lower staff contains a bass line with half notes. A dashed line above the staff indicates a slur or breath mark.

Handwritten musical score for the first system. It consists of a grand staff with a treble clef on the top line and a bass clef on the bottom line. The key signature is one flat (B-flat). The first measure contains a half note G4 in the treble and a half note B-flat3 in the bass. The second measure contains a half note A4 in the treble and a half note A-flat3 in the bass. The treble staff has a slur over the notes G4 and A4, and the bass staff has a slur over the notes B-flat3 and A-flat3. There are also some handwritten annotations above and below the staves.

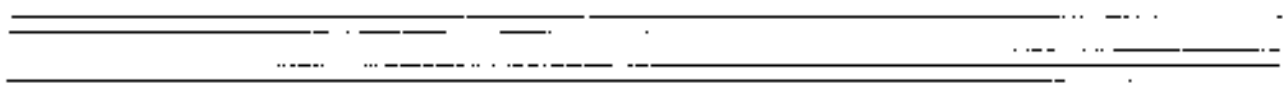
Handwritten musical score for the second system. It consists of a grand staff with a treble clef on the top line and a bass clef on the bottom line. The key signature is one flat (B-flat). The first measure contains a half note G4 in the treble and a half note B-flat3 in the bass. The second measure contains a half note A4 in the treble and a half note A-flat3 in the bass. The treble staff has a slur over the notes G4 and A4, and the bass staff has a slur over the notes B-flat3 and A-flat3. There are also some handwritten annotations above and below the staves.

Handwritten musical score for the third system. It consists of a grand staff with a treble clef on the top line and a bass clef on the bottom line. The key signature changes to one sharp (F#). The first measure contains a half note F#4 in the treble and a half note F#3 in the bass. The second measure contains a half note G4 in the treble and a half note G-flat3 in the bass. The treble staff has a slur over the notes F#4 and G4, and the bass staff has a slur over the notes F#3 and G-flat3. There are also some handwritten annotations above and below the staves.

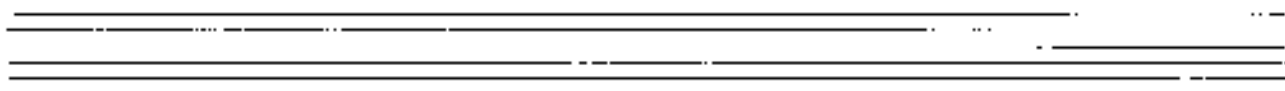
Handwritten musical score system 1. It consists of three staves. The top staff is in treble clef and contains a melodic line with notes G4, A4, B4, C5, and D5, with various accidentals and slurs. The middle staff is in bass clef and contains a melodic line with notes G3, F3, E3, D3, and C3, with various accidentals and slurs. The bottom staff is in bass clef and contains a single note G2. The system is divided into two measures by a vertical bar line.

Handwritten musical score system 2. It consists of three staves. The top staff is in treble clef and contains a melodic line with notes G4, A4, B4, and C5, with various accidentals and slurs. The middle staff is in bass clef and contains a melodic line with notes G3, F3, E3, D3, and C3, with various accidentals and slurs. The bottom staff is in bass clef and contains a single note G2. The system is divided into two measures by a vertical bar line.

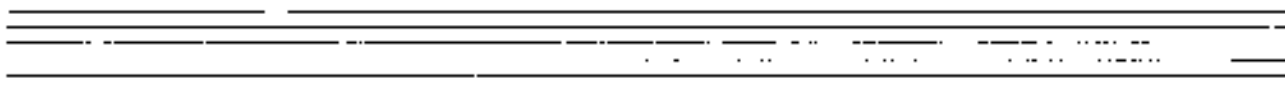
Handwritten musical score system 3. It consists of three staves. The top staff is in treble clef and contains a melodic line with notes G4, A4, B4, and C5, with various accidentals and slurs. The middle staff is in bass clef and contains a melodic line with notes G3, F3, E3, D3, and C3, with various accidentals and slurs. The bottom staff is in bass clef and contains a single note G2. The system is divided into two measures by a vertical bar line.



Handwritten musical notation for the first system. The system consists of three staves: a treble clef staff, a bass clef staff, and a piano staff. The treble staff contains a melodic line with notes, rests, and dynamic markings like *mf* and *f*. The bass staff contains a bass line with notes and rests. The piano staff contains a bass line with notes and rests. The system is divided into two measures by a vertical bar line.



Handwritten musical notation for the second system. The system consists of three staves: a treble clef staff, a bass clef staff, and a piano staff. The treble staff contains a melodic line with notes, rests, and dynamic markings like *mf* and *f*. The bass staff contains a bass line with notes and rests. The piano staff contains a bass line with notes and rests. The system is divided into two measures by a vertical bar line.



Handwritten musical notation for the third system. The system consists of three staves: a treble clef staff, a bass clef staff, and a piano staff. The treble staff contains a melodic line with notes, rests, and dynamic markings like *mf* and *f*. The bass staff contains a bass line with notes and rests. The piano staff contains a bass line with notes and rests. The system is divided into two measures by a vertical bar line.

Handwritten musical notation for the first system. The system consists of a grand staff with treble and bass clefs. The key signature is one flat (B-flat), and the time signature is 3/4. The right hand contains a melodic line with a triplet of eighth notes and various accidentals. The left hand has a simple bass line with a whole note and a half note.

Handwritten musical notation for the second system. The system consists of a grand staff with treble and bass clefs. The key signature is one flat (B-flat), and the time signature is 3/4. The right hand continues the melodic line with a triplet of eighth notes. The left hand has a simple bass line with a whole note and a half note.

Handwritten musical notation for the third system. The system consists of a grand staff with treble and bass clefs. The key signature is one flat (B-flat), and the time signature is 3/4. The right hand continues the melodic line with a triplet of eighth notes. The left hand has a simple bass line with a whole note and a half note.

Handwritten musical notation for the first system. The system consists of three staves: a treble clef staff at the top, a middle staff, and a bass clef staff at the bottom. The treble staff contains notes with a flat (b) and a sharp (#) above them, and a '9' below. The middle staff contains a complex melodic line with various accidentals and slurs. The bass staff contains notes with a flat (b) and a sharp (#) below them. The system is enclosed in a large bracket on the left side.

Handwritten musical notation for the second system. The system consists of three staves: a treble clef staff at the top, a middle staff, and a bass clef staff at the bottom. The treble staff contains notes with a sharp (#) above them and a '9' below. The middle staff contains a complex melodic line with various accidentals and slurs. The bass staff contains notes with a flat (b) and a sharp (#) below them. The system is enclosed in a large bracket on the left side.

Handwritten musical notation for the third system. The system consists of three staves: a treble clef staff at the top, a middle staff, and a bass clef staff at the bottom. The treble staff contains notes with a sharp (#) above them and a '9' below. The middle staff contains a complex melodic line with various accidentals and slurs. The bass staff contains notes with a flat (b) and a sharp (#) below them. The system is enclosed in a large bracket on the left side.

Handwritten musical score for the first system. It consists of three staves. The top staff has a treble clef and contains notes with accidentals (flats and naturals) and dynamic markings like z and z . The middle staff has a bass clef and contains notes with accidentals (sharps, flats, and naturals). The bottom staff has a bass clef and contains notes with accidentals (flats and naturals). The system is enclosed in a large bracket on the left.

Graves mit z

Handwritten musical score for the second system. It consists of three staves. The top staff has a treble clef and contains notes with accidentals (sharps and naturals) and dynamic markings like z and z . The middle staff has a bass clef and contains notes with accidentals (flats, sharps, and naturals). The bottom staff has a bass clef and contains notes with accidentals (flats and naturals). The system is enclosed in a large bracket on the left.

Handwritten musical score for the third system. It consists of three staves. The top staff has a treble clef and contains notes with accidentals (flats and naturals). The middle staff has a bass clef and contains notes with accidentals (flats, sharps, and naturals). The bottom staff has a bass clef and contains notes with accidentals (flats and naturals). The system is enclosed in a large bracket on the left.

soler
[frei - subato - (wie eine Madrigal)]

Handwritten musical notation for the first system. It features a treble clef, a key signature of one sharp (F#), and a 7/8 time signature. The melody is written on a single staff with various note values and rests. A circled sharp sign is present below the staff. A large bracket spans the entire system.

Handwritten musical notation for the second system. It features a treble clef, a key signature of one sharp (F#), and a 7/8 time signature. The melody continues with similar note values and rests. A large bracket spans the entire system.

subato *Quell -*

Handwritten musical notation for the third system. It features a treble clef, a key signature of one sharp (F#), and a 7/8 time signature. The melody continues with similar note values and rests. A large bracket spans the entire system.

Ande)

rit.....

Ande)

(wie ein Chorale)

G.P.

lento

Handwritten musical score for the first system. It consists of three staves: a treble clef staff, a bass clef staff, and a grand staff. The treble clef staff contains a melodic line with notes and accidentals. The bass clef staff contains a bass line with notes and accidentals. A circled number '21' is written in the bass clef staff. Dynamic markings 'pp' are present in both the treble and bass clef staves. A large slur covers the entire system.

Handwritten musical score for the second system. It consists of three staves: a treble clef staff, a bass clef staff, and a grand staff. The treble clef staff contains a melodic line with notes and accidentals. The bass clef staff contains a bass line with notes and accidentals. A large slur covers the entire system.

Handwritten musical score system 1. It consists of three staves: a treble clef staff, an alto clef staff, and a bass clef staff. The treble staff contains a melodic line with notes and accidentals (sharps and flats). The alto and bass staves contain accompaniment with notes and rests. A large brace on the left side groups the three staves together.

Handwritten musical score system 2. It consists of three staves: a treble clef staff, an alto clef staff, and a bass clef staff. The treble staff contains a melodic line with notes and accidentals. The alto and bass staves contain accompaniment with notes and rests. A large brace on the left side groups the three staves together.

Handwritten musical score system 3. It consists of three staves: a treble clef staff, an alto clef staff, and a bass clef staff. The treble staff contains a melodic line with notes and accidentals. The alto and bass staves contain accompaniment with notes and rests. A large brace on the left side groups the three staves together.

Handwritten musical score for the first system. It consists of three staves. The top staff is in treble clef with a key signature of one sharp (F#) and a common time signature. The middle staff is in bass clef and contains chords in the second and third measures, each enclosed in a box. The bottom staff is mostly empty. A circled '5' is written above the second measure of the middle staff.

Handwritten musical score for the second system. It consists of three staves. The top staff is in treble clef with a key signature of two sharps (F#, C#) and a common time signature. The middle staff is in bass clef and contains chords in the second, third, and fourth measures, each enclosed in a box. The bottom staff contains a few notes at the end.

Handwritten musical score for the third system. It consists of three staves. The top staff is in treble clef with a key signature of two sharps (F#, C#) and a common time signature. The middle staff is in bass clef and contains chords in the second, third, and fourth measures, each enclosed in a box. The bottom staff contains a few notes at the end.

Handwritten musical notation for the first system. It consists of three staves. The top staff has a treble clef, a key signature of one sharp (F#), and a 3/4 time signature. The melody begins with a quarter note G4, followed by a quarter note A4, and a quarter note B4. A slur covers the next two measures, which contain a quarter note C5 and a quarter note D5. The bottom staff has a bass clef and contains a single note G2 in the first measure.

Handwritten musical notation for the second system. It consists of three staves. The top staff has a treble clef, a key signature of one sharp (F#), and a 3/4 time signature. The melody continues with a quarter note E5, followed by a quarter note F#5, and a quarter note G5. A slur covers the next two measures, which contain a quarter note A5 and a quarter note B5. The bottom staff has a bass clef and contains a single note G2 in the first measure.

Handwritten musical notation for the third system. It consists of three staves. The top staff has a treble clef, a key signature of one sharp (F#), and a 3/4 time signature. The melody continues with a quarter note C6, followed by a quarter note D6, and a quarter note E6. A slur covers the next two measures, which contain a quarter note F#6 and a quarter note G6. The bottom staff has a bass clef and contains a single note G2 in the first measure.

Handwritten musical notation for the first system. The system consists of three staves. The top staff is in treble clef with a key signature of one sharp (F#) and a 3/4 time signature. It contains a melody line with slurs and some handwritten annotations like 'y' and 'y'. The middle staff is in bass clef and contains a series of notes, some with slurs. The bottom staff is in bass clef and contains a single note per measure.

Handwritten musical notation for the second system. The system consists of three staves. The top staff is in treble clef with a key signature of one sharp (F#) and a 3/4 time signature. It contains a melody line with slurs and some handwritten annotations like 'y' and 'y'. The middle staff is in bass clef and contains a series of notes, some with slurs. The bottom staff is in bass clef and contains a single note per measure.

Handwritten musical notation for the third system. The system consists of three staves. The top staff is in treble clef with a key signature of one sharp (F#) and a 3/4 time signature. It contains a melody line with slurs and some handwritten annotations like 'y' and 'y'. The middle staff is in bass clef and contains a series of notes, some with slurs. The bottom staff is in bass clef and contains a single note per measure.

(poco rit.)

Handwritten musical score for a piano piece, first system. It features a treble clef with a key signature of one sharp (F#) and a 4/4 time signature. The music consists of two staves: the upper staff has a melody with eighth and quarter notes, and the lower staff has a bass line with chords and eighth notes. A dynamic marking 'pp' is present. The system is enclosed in a large bracket on the left.

(arg 4) Adagio

Handwritten musical score for a piano piece, second system. It features a treble clef with a key signature of one sharp (F#) and a 4/4 time signature. The music consists of two staves: the upper staff has a melody with quarter and eighth notes, and the lower staff has a bass line with chords and quarter notes. A dynamic marking 'pp' is present. The system is enclosed in a large bracket on the left.

Handwritten musical score for a piano piece, third system. It features a treble clef with a key signature of one sharp (F#) and a 4/4 time signature. The music consists of two staves: the upper staff has a melody with quarter and eighth notes, and the lower staff has a bass line with chords and quarter notes. A dynamic marking 'pp' is present. The system is enclosed in a large bracket on the left.

rough.

Treble

Handwritten musical score for the first system. It features a treble clef, a circled key signature of one flat (B-flat), and a circled common time signature (C). The music is written on two staves. The first staff contains notes with slurs and ties, while the second staff contains rests and notes. A large slur spans across both staves, indicating a continuous melodic line.

Handwritten musical score for the second system. It continues the notation from the first system, featuring a treble clef, a circled key signature of one flat, and a circled common time signature. The music is written on two staves with notes, rests, and slurs.

Handwritten musical score for the third system. It continues the notation from the second system, featuring a treble clef, a circled key signature of one flat, and a circled common time signature. The music is written on two staves with notes, rests, and slurs.

Handwritten musical score for the first system. It consists of three staves: a treble staff, a grand staff (treble and bass), and a bass staff. The treble staff contains two measures of music with complex chordal textures and melodic lines, including a large slur over the first measure. The grand staff contains two measures of music with similar textures. The bass staff contains two measures of music, primarily consisting of a single note with a fermata in each measure.

Handwritten musical score for the second system. It consists of three staves: a treble staff, a grand staff (treble and bass), and a bass staff. The treble staff contains two measures of music with complex chordal textures and melodic lines, including a large slur over the first measure. The grand staff contains two measures of music with similar textures. The bass staff contains two measures of music, primarily consisting of a single note with a fermata in each measure.

Handwritten musical score for the third system. It consists of three staves: a treble staff, a grand staff (treble and bass), and a bass staff. The treble staff contains two measures of music with complex chordal textures and melodic lines, including a large slur over the first measure. The grand staff contains two measures of music with similar textures. The bass staff contains two measures of music, primarily consisting of a single note with a fermata in each measure.

Handwritten musical score system 1. It consists of three staves. The top staff is a treble clef with a key signature of one flat (Bb) and a common time signature (C). It contains two measures of music with a long slur over the first measure. The middle staff is a grand staff (treble and bass clefs) with a key signature of one flat and a common time signature. It contains two measures of music with a long slur over the first measure. The bottom staff is a bass clef with a key signature of one flat and a common time signature. It contains two measures of music with a long slur over the first measure.

Handwritten musical score system 2. It consists of three staves. The top staff is a treble clef with a key signature of one flat (Bb) and a common time signature (C). It contains two measures of music with a long slur over the first measure. The middle staff is a grand staff (treble and bass clefs) with a key signature of one flat and a common time signature. It contains two measures of music with a long slur over the first measure. The bottom staff is a bass clef with a key signature of one flat and a common time signature. It contains two measures of music with a long slur over the first measure.

Handwritten musical score system 3. It consists of three staves. The top staff is a treble clef with a key signature of two flats (Bb, Eb) and a common time signature (C). It contains two measures of music with a long slur over the first measure. The middle staff is a grand staff (treble and bass clefs) with a key signature of two flats and a common time signature. It contains two measures of music with a long slur over the first measure. The bottom staff is a bass clef with a key signature of two flats and a common time signature. It contains two measures of music with a long slur over the first measure.

Handwritten musical notation for the first system. It consists of three staves: a treble clef staff at the top, a grand staff (treble and bass clefs) in the middle, and a bass clef staff at the bottom. The first two measures show a treble staff with a half note G4 and a half note A4, both with slurs above them. The grand staff has a complex chordal accompaniment with slurs. The bass staff has a half note G3 and a half note A3, both with slurs below them.

Handwritten musical notation for the second system. It consists of three staves: a treble clef staff at the top, a grand staff (treble and bass clefs) in the middle, and a bass clef staff at the bottom. The first two measures show a treble staff with a half note G#4 and a half note A#4, both with slurs above them. The grand staff has a complex chordal accompaniment with slurs. The bass staff has a half note G#3 and a half note A#3, both with slurs below them.

Handwritten musical notation for the third system. It consists of three staves: a treble clef staff at the top, a grand staff (treble and bass clefs) in the middle, and a bass clef staff at the bottom. The first two measures show a treble staff with a half note G4 and a half note A4, both with slurs above them. The grand staff has a complex chordal accompaniment with slurs. The bass staff has a half note G3 and a half note A3, both with slurs below them.

Handwritten musical notation for the first system. It consists of three staves: treble, alto, and bass. The treble staff contains two measures of music with notes G4, A4, B4, and C5, each with a sharp (#) accidental. The notes are grouped by slurs. The alto staff contains two measures of music with notes G4, A4, B4, and C5, each with a sharp (#) accidental. The notes are grouped by slurs. The bass staff contains two measures of music with notes G3 and C4, each with a sharp (#) accidental. The notes are grouped by slurs.

Handwritten musical notation for the second system. It consists of three staves: treble, alto, and bass. The treble staff contains two measures of music with notes G4, A4, B4, and C5, each with a sharp (#) accidental. The notes are grouped by slurs. The alto staff contains two measures of music with notes G4, A4, B4, and C5, each with a sharp (#) accidental. The notes are grouped by slurs. The bass staff contains two measures of music with notes G3 and C4, each with a sharp (#) accidental. The notes are grouped by slurs.

Handwritten musical notation for the third system. It consists of three staves: treble, alto, and bass. The treble staff contains two measures of music with notes G4, A4, B4, and C5, each with a flat (b) accidental. The notes are grouped by slurs. The alto staff contains two measures of music with notes G4, A4, B4, and C5, each with a flat (b) accidental. The notes are grouped by slurs. The bass staff contains two measures of music with notes G3 and C4, each with a flat (b) accidental. The notes are grouped by slurs.

Handwritten musical notation for the first system. It consists of three staves: a treble clef staff at the top, a grand staff (piano accompaniment) in the middle, and a bass clef staff at the bottom. The treble staff contains a melodic line with a slur over two measures. The piano accompaniment features chords and a bass line. The bass staff has a single note in each measure.

Handwritten musical notation for the second system. It consists of three staves: a treble clef staff at the top, a grand staff (piano accompaniment) in the middle, and a bass clef staff at the bottom. The treble staff contains a melodic line with a slur over two measures. The piano accompaniment features triplets in both the upper and lower voices. The bass staff has a single note in each measure.

Handwritten musical notation for the third system. It consists of three staves: a treble clef staff at the top, a grand staff (piano accompaniment) in the middle, and a bass clef staff at the bottom. The treble staff contains a melodic line with a slur over two measures. The piano accompaniment features triplets in both the upper and lower voices. The bass staff has a single note in each measure.

größtes gut.....

Handwritten musical notation for the first system, featuring a grand staff with treble and bass clefs. The right hand contains a sequence of chords and triplets, including a triplet of F#4, G#4, A4 and a triplet of G4, F#4, E4. The left hand has a few notes, including a triplet of G2, F#2, E2.

Handwritten musical notation for the second system, similar to the first. The right hand features triplets of G#4, A4, B4 and G4, F#4, E4. The left hand has a triplet of G2, F#2, E2.

Handwritten musical notation for the third system. It includes a treble clef, a common time signature 'C', and a key signature of one flat. The notation includes a chord with notes G2, F#2, E2 and a circled chord with notes G2, F#2, E2. The word 'lunga.' is written. To the right, there is a large scribble and the signature 'Adolf Schuler'.