

Fantasie für
Orgel 1969

Notenheft *Adolf*
Schubert

Fantasie
für große
Orgel

1969

Adolf Scherbaum

Fantasie für große Orgel

*p*ubata (Mod.)

Moderato (nicht schleppen)

Handwritten musical score for the first system. It features a grand staff with three staves. The top staff is in G major (one sharp) and contains a whole note chord of F# and a half note chord of G#-A-B. The middle staff contains a half note chord of F# and a half note chord of G#-A-B. The bottom staff contains a whole note chord of Bb and a whole note chord of B. A fermata is placed over the first measure of the bottom staff.

Handwritten musical score for the second system. It features a grand staff with three staves. The top staff contains a whole note chord of G# and a whole note chord of A. The middle staff contains a half note chord of G#-A-B and a half note chord of G#-A-B. The bottom staff contains a whole note chord of Bb and a whole note chord of B. A fermata is placed over the first measure of the bottom staff.

Handwritten musical score for the first system. It consists of three staves. The top staff has a treble clef and contains two whole notes: the first is G4 with a sharp sign (#), and the second is A4. The middle staff has a bass clef and contains two measures of music. Each measure begins with a fermata over a whole note G3, followed by a slur over a quarter-note sequence: F#4, G4, A4, B4. The bottom staff has a bass clef and contains two whole notes: the first is G3 with a flat sign (b), and the second is A3.

Handwritten musical score for the second system. It consists of three staves. The top staff has a treble clef and contains two whole notes: the first is G4 with a flat sign (b), and the second is A4. The middle staff has a bass clef and contains two measures of music. Each measure begins with a fermata over a whole note G3, followed by a slur over a quarter-note sequence: F#4, G4, A4, B4. The bottom staff has a bass clef and contains two whole notes: the first is G3 with a flat sign (b), and the second is A3.

Handwritten musical score for the third system. It consists of three staves. The top staff has a treble clef and contains two whole notes: the first is G4 with a flat sign (b), and the second is A4. The middle staff has a bass clef and contains two measures of music. Each measure begins with a fermata over a whole note G3, followed by a slur over a quarter-note sequence: F#4, G4, A4, B4. The bottom staff has a bass clef and contains two whole notes: the first is G3 with a flat sign (b), and the second is A3.

Handwritten musical notation for the first system. It consists of three staves. The top staff is in treble clef with a key signature of one sharp (F#). The middle staff is in treble clef with a key signature of one flat (Bb). The bottom staff is in bass clef with a key signature of one flat (Bb). The notation includes slurs and various note values across two measures.

Handwritten musical notation for the second system. It consists of three staves. The top staff is in treble clef with a key signature of one flat (Bb). The middle staff is in treble clef with a key signature of one flat (Bb). The bottom staff is in bass clef with a key signature of one flat (Bb). The notation includes slurs and various note values across two measures.

Handwritten musical notation for the third system. It consists of three staves. The top staff is in treble clef with a key signature of one flat (Bb). The middle staff is in treble clef with a key signature of one flat (Bb). The bottom staff is in bass clef with a key signature of one flat (Bb). The notation includes slurs and various note values across two measures.

Handwritten musical score for the first system. The system consists of a grand staff with treble and bass clefs. The right hand part has a melodic line with a slur and a fermata. The left hand part has a bass line with a slur and a fermata. The key signature has one sharp (F#) and the time signature is 3/4.

Handwritten musical score for the second system. The system consists of a grand staff with treble and bass clefs. The right hand part has a melodic line with a slur and a fermata. The left hand part has a bass line with a slur and a fermata. The key signature has one sharp (F#) and the time signature is 3/4.

Handwritten musical score for the third system. The system consists of a grand staff with treble and bass clefs. The right hand part has a melodic line with a slur and a fermata. The left hand part has a bass line with a slur and a fermata. The key signature has one sharp (F#) and the time signature is 3/4.

Handwritten musical score for the first system. The top staff is a treble clef with a key signature of one flat (B-flat) and a common time signature. It contains a melodic line with a slur over two notes in the first measure and a whole note in the second. The piano part consists of two staves with a key signature of one flat. The upper piano staff has a melodic line with a slur over two notes in the first measure and a whole note in the second. The lower piano staff has a bass line with a slur over two notes in the first measure and a whole note in the second. The system is divided into two measures by a vertical bar line.

Handwritten musical score for the second system. The top staff is a treble clef with a key signature of one flat and a common time signature. It contains a melodic line with a slur over two notes in the first measure and a whole note in the second. The piano part consists of two staves with a key signature of one flat. The upper piano staff has a melodic line with a slur over two notes in the first measure and a whole note in the second. The lower piano staff has a bass line with a slur over two notes in the first measure and a whole note in the second. The system is divided into two measures by a vertical bar line.

Handwritten musical score for the third system. The top staff is a treble clef with a key signature of two sharps (F# and C#) and a common time signature. It contains a melodic line with a slur over two notes in the first measure and a whole note in the second. The piano part consists of two staves with a key signature of one flat. The upper piano staff has a melodic line with a slur over two notes in the first measure and a whole note in the second. The lower piano staff has a bass line with a slur over two notes in the first measure and a whole note in the second. The system is divided into two measures by a vertical bar line.

Handwritten musical notation for the first system, featuring a treble clef staff with a key signature of one sharp (F#) and a bass clef staff. The treble staff contains a melodic line with notes G4, A4, B4, C5, and D5, with various accidentals and dynamics. The bass staff contains a bass line with notes G2, A2, B2, and C3. The system is divided into two measures by a vertical bar line.

Handwritten musical notation for the second system, similar to the first. The treble staff has notes G4, A4, B4, C5, and D5. The bass staff has notes G2, A2, B2, and C3. The system is divided into two measures by a vertical bar line.

Handwritten musical notation for the third system, similar to the first. The treble staff has notes G4, A4, B4, C5, and D5. The bass staff has notes G2, A2, B2, and C3. The system is divided into two measures by a vertical bar line.

Handwritten musical score for the first system of 'Fantasie für Orgel' by Adolf Scherbaum. It features three staves: a treble clef staff with a key signature of one flat and a common time signature, and two bass clef staves. The music includes a triplet of eighth notes in the middle staff and various accidentals and dynamics.

Handwritten musical score for the second system of 'Fantasie für Orgel' by Adolf Scherbaum. It features three staves: a treble clef staff with a key signature of one flat and a common time signature, and two bass clef staves. The music includes a triplet of eighth notes in the middle staff and various accidentals and dynamics.

Handwritten musical score for the third system of 'Fantasie für Orgel' by Adolf Scherbaum. It features three staves: a treble clef staff with a key signature of one flat and a common time signature, and two bass clef staves. The music includes a triplet of eighth notes in the middle staff and various accidentals and dynamics.

Handwritten musical score for the first system, consisting of three staves. The notation is complex, featuring various accidentals (sharps, flats, naturals) and slurs across the staves. The top staff has a treble clef, the middle a soprano clef, and the bottom a bass clef. The music is written in a single system with a vertical bar line.

großes mit.....

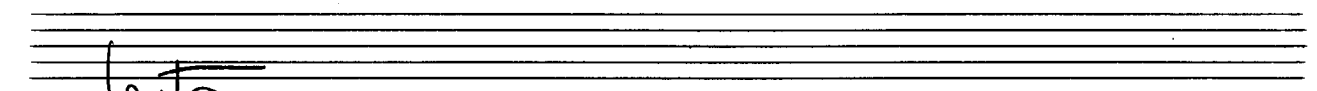
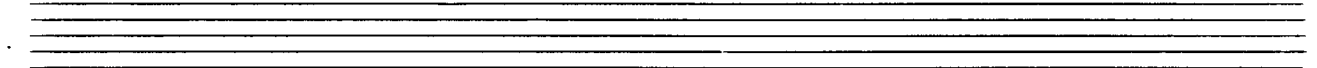
Handwritten musical score for the second system, consisting of three staves. The notation is complex, featuring various accidentals (sharps, flats, naturals) and slurs across the staves. The top staff has a treble clef, the middle a soprano clef, and the bottom a bass clef. The music is written in a single system with a vertical bar line.

Handwritten musical score for the third system, consisting of three staves. The notation is complex, featuring various accidentals (sharps, flats, naturals) and slurs across the staves. The top staff has a treble clef, the middle a soprano clef, and the bottom a bass clef. The music is written in a single system with a vertical bar line.

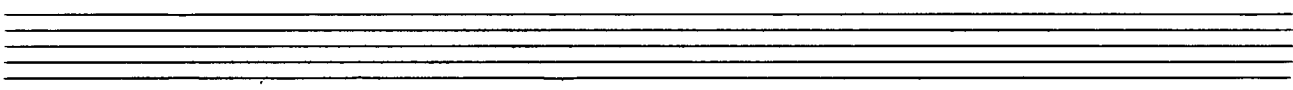
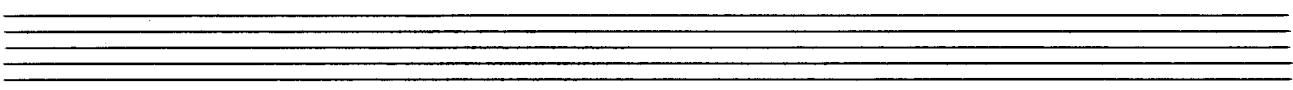
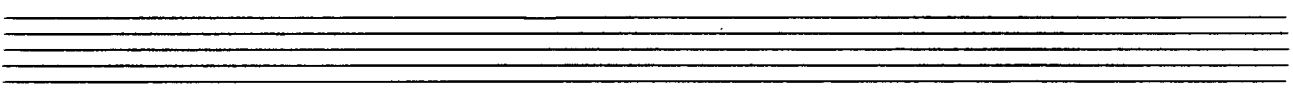
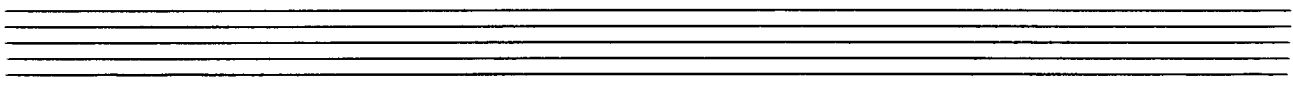
Handwritten musical score for the first system. It features a treble clef staff with a melodic line starting with a quarter rest, followed by eighth notes with accidentals (sharps and flats). A slur covers the first two measures, and another slur covers the last two measures. The notes in the second and fourth measures are marked with a 'rit' (ritardando) and a dotted line. Below the treble staff are two empty bass staves, with a single bass note (B-flat) written in the first measure of the bottom staff.

Handwritten musical score for the second system. It features a treble clef staff with a melodic line consisting of quarter notes with various accidentals (flats, sharps, and naturals). A slur is written above the first two measures. Below the treble staff are two bass staves. The bottom staff contains a series of quarter notes with accidentals, all grouped under a single slur. The text "(wie ein Choral)" is written below the bass staves.

Handwritten musical score for the third system. It features a treble clef staff with a melodic line consisting of quarter notes with various accidentals. Below the treble staff are two bass staves. The bottom staff contains a series of quarter notes with accidentals, all grouped under a single slur. A callout box on the right side of the system contains the text "GIP." with an arrow pointing to the end of the piece.



lento —



Handwritten musical score for the first system. The system consists of three staves: a treble clef staff, a bass clef staff, and a grand staff. The treble clef staff contains a melodic line with notes and accidentals, including a flat (b) and a sharp (#). The bass clef staff contains a lower melodic line with notes and accidentals, including a sharp (#). The grand staff contains a bass line with notes and accidentals, including a sharp (#).

Handwritten musical score for the second system. The system consists of three staves: a treble clef staff, a bass clef staff, and a grand staff. The treble clef staff contains a melodic line with notes and accidentals, including a sharp (#) and a flat (b). The bass clef staff contains a lower melodic line with notes and accidentals, including a sharp (#) and a flat (b). The grand staff contains a bass line with notes and accidentals, including a sharp (#).

Handwritten musical score for the third system. The system consists of three staves: a treble clef staff, a bass clef staff, and a grand staff. The treble clef staff contains a melodic line with notes and accidentals, including a sharp (#) and a flat (b). The bass clef staff contains a lower melodic line with notes and accidentals, including a sharp (#) and a flat (b). The grand staff contains a bass line with notes and accidentals, including a sharp (#).

Handwritten musical score for the first system. The system consists of three staves. The top staff is in treble clef and contains a melodic line with notes and accidentals, including a circled '5i' annotation. The middle staff is in bass clef and contains a bass line with notes and accidentals. The bottom staff is in bass clef and contains a bass line with notes and accidentals. The system is divided into two measures by a vertical bar line.

Handwritten musical score for the second system. The system consists of three staves. The top staff is in treble clef and contains a melodic line with notes and accidentals. The middle staff is in bass clef and contains a bass line with notes and accidentals. The bottom staff is in bass clef and contains a bass line with notes and accidentals. The system is divided into two measures by a vertical bar line.

Handwritten musical score for the third system. The system consists of three staves. The top staff is in treble clef and contains a melodic line with notes and accidentals. The middle staff is in bass clef and contains a bass line with notes and accidentals. The bottom staff is in bass clef and contains a bass line with notes and accidentals. The system is divided into two measures by a vertical bar line.

Handwritten musical score for the first system. The treble clef staff has a key signature of one sharp (F#) and a common time signature. The right hand contains a melodic line with eighth and sixteenth notes, while the left hand provides a simple bass line with a few notes.

Handwritten musical score for the second system. The treble clef staff has a key signature of two sharps (F#, C#) and a common time signature. The right hand features more complex rhythmic patterns and accidentals, including a double sharp (F##). The left hand continues with a simple bass line.

Handwritten musical score for the third system. The treble clef staff has a key signature of two sharps (F#, C#) and a common time signature. The right hand has a melodic line with various accidentals, and the left hand has a simple bass line.

Handwritten musical score for the first system. The top staff is in treble clef and contains notes with accidentals (sharps and naturals) and a fermata. The middle and bottom staves are in bass clef and contain notes with accidentals (sharps, naturals, and flats) and a fermata.

Handwritten musical score for the second system. The top staff is in treble clef and contains notes with accidentals (sharps and naturals) and a fermata. The middle and bottom staves are in bass clef and contain notes with accidentals (sharps, naturals, and flats) and a fermata.

Handwritten musical score for the third system. The top staff is in treble clef and contains notes with accidentals (sharps and naturals) and a fermata. The middle and bottom staves are in bass clef and contain notes with accidentals (sharps, naturals, and flats) and a fermata.

(poco rit. -----)

(lung 4) Adagio

esoph.

Presto

3/4 (7)

4/4 (7)

7

3

7

3

7

7

7

7

7

7

7

7

7

7

Handwritten musical score for the first system. The top staff is in treble clef, showing a melodic line with a slur over two measures. The middle and bottom staves are in bass clef, forming a grand staff with accompaniment. The music is in a major key and includes various note values and rests.

Handwritten musical score for the second system. The notation continues from the first system, with a key signature change to one sharp (F#) indicated by a sharp sign on the F line of the treble clef staff. The structure remains consistent with a treble clef staff and a grand staff.

Handwritten musical score for the third system. The notation concludes the piece with a final cadence. A key signature change to one flat (Bb) is indicated by a flat sign on the B line of the treble clef staff. The structure remains consistent with a treble clef staff and a grand staff.

Handwritten musical score for the first system, featuring a grand staff with treble, alto, and bass clefs. The music includes a melodic line in the treble clef with a slur and a bass line with chords and a single note in the bass clef.

Handwritten musical score for the second system, featuring a grand staff. The treble clef has a long slur. The bass clef contains a triplet of chords and another triplet of chords with accidentals.

Handwritten musical score for the third system, featuring a grand staff. The treble clef has a long slur. The bass clef contains two triplet figures.

größtes gut - - - - -