

Konzert für
Trompete in C
und

Streichorchester

Notenheft (3 Teile) 1969

Arloef Seidenbaum

1. (Hauptmelodie) (aber nicht schleppend)

Handwritten musical score for the first system, featuring five staves:

- Violin I (V. I.):** Treble clef, 4/4 time signature. Starts with a forte (*ff*) dynamic. The melody begins with a quarter note G4, followed by a half note G4, and then a quarter note G4 with a sharp sign (#). The piece concludes with a fermata over a quarter note G4.
- Violin II (V. II.):** Treble clef. Mirrors the Violin I part with a quarter note G4, a half note G4, a quarter note G4 with a sharp sign (#), and a final quarter note G4 with a sharp sign (#).
- Viola (V.):** Treble clef. Mirrors the Violin I part with a quarter note G4, a half note G4, a quarter note G4 with a sharp sign (#), and a final quarter note G4 with a sharp sign (#).
- Bassoon (Br.):** Bass clef. Mirrors the Violin I part with a quarter note G4, a half note G4, a quarter note G4 with a sharp sign (#), and a final quarter note G4 with a sharp sign (#).
- Contrabass (Cb.):** Bass clef. Mirrors the Violin I part with a quarter note G4, a half note G4, a quarter note G4 with a sharp sign (#), and a final quarter note G4 with a sharp sign (#).

Handwritten musical score for the second system, featuring five staves:

- Violin I (V. I.):** Treble clef. The melody continues with a quarter note B4, a quarter note A4, a quarter note G4, and a quarter note F4. It concludes with a fermata over a quarter note G4.
- Violin II (V. II.):** Treble clef. Mirrors the Violin I part with a quarter note B4, a quarter note A4, a quarter note G4, and a quarter note F4. It concludes with a fermata over a quarter note G4.
- Viola (V.):** Treble clef. Mirrors the Violin I part with a quarter note B4, a quarter note A4, a quarter note G4, and a quarter note F4. It concludes with a fermata over a quarter note G4.
- Bassoon (Br.):** Bass clef. Mirrors the Violin I part with a quarter note B4, a quarter note A4, a quarter note G4, and a quarter note F4. It concludes with a fermata over a quarter note G4.
- Contrabass (Cb.):** Bass clef. Mirrors the Violin I part with a quarter note B4, a quarter note A4, a quarter note G4, and a quarter note F4. It concludes with a fermata over a quarter note G4.

Handwritten musical score for the first system. It consists of a vocal line on a single staff and a piano accompaniment on four staves. The vocal line begins with a treble clef and a key signature of one sharp (F#). The piano accompaniment includes treble and bass clefs. The music is divided into two measures by a double bar line. The first measure contains a vocal line with a whole note and a piano accompaniment with eighth notes. The second measure contains a vocal line with a whole note and a piano accompaniment with eighth notes. The piano accompaniment features a rhythmic pattern of eighth notes, often beamed together. The system concludes with a large right-facing curly bracket.

Handwritten musical score for the second system. It consists of a vocal line on a single staff and a piano accompaniment on four staves. A circled '1' is located in the top right corner. The vocal line begins with a treble clef and a key signature of one sharp (F#). The piano accompaniment includes treble and bass clefs. The music is divided into two measures by a double bar line. The first measure contains a vocal line with a whole note and a piano accompaniment with eighth notes. The second measure contains a vocal line with a whole note and a piano accompaniment with eighth notes. The piano accompaniment features a rhythmic pattern of eighth notes, often beamed together. The system concludes with a large right-facing curly bracket.

sehr ruhig

Handwritten musical score for the first system. It consists of three staves. The top staff is for the trumpet, marked "Solo" and "mf". The middle staff is for the piano, also marked "Solo" and "mf". The bottom staff is for the cello, with a "Solo" marking. The music is in a key with one sharp (F#) and a 4/4 time signature. The first measure shows a melodic line in the trumpet and piano, with a fermata over the piano part. The second measure continues the melodic development.

2

Handwritten musical score for the second system, marked with a circled "2". It consists of three staves. The top staff is for the trumpet, marked "f". The middle staff is for the piano, marked "f". The bottom staff is for the cello, marked "Solo" and "f". The music continues from the first system. The first measure shows a melodic line in the trumpet and piano, with a fermata over the piano part. The second measure continues the melodic development.

(poco rit.)

3

Handwritten musical score for the first system, consisting of five staves. The top staff is a treble clef with a whole rest. The second staff has a treble clef and contains notes with an accent (>) and the word "di". The third staff has a treble clef and contains notes with an accent (>) and the word "solo". The fourth staff has a bass clef and contains notes with an accent (>) and the word "p". The fifth staff has a bass clef and contains notes with an accent (>) and the word "p". There are several dynamic markings, including circled "p"s, and various musical notations like slurs and accents.

Handwritten musical score for the second system, consisting of five staves. The top staff has a treble clef and contains notes with an accent (>) and the word "frei". The second staff has a treble clef and contains notes with an accent (>) and the word "alle". The third staff has a treble clef and contains notes with an accent (>) and the word "p". The fourth staff has a bass clef and contains notes with an accent (>) and the word "p". The fifth staff has a bass clef and contains notes with an accent (>) and the word "p". There are several dynamic markings, including circled "p"s, and various musical notations like slurs and accents.

4

Handwritten musical score for strings and woodwinds. The top staff is in treble clef with a key signature of one sharp (F#) and a 4/4 time signature. It features a melodic line with dynamics *ff* and *p*, and includes a triplet of eighth notes. The bottom four staves are for strings (Violin I, Violin II, Viola, and Cello/Double Bass), each starting with a *ffp* dynamic and a whole note chord. The strings are marked with hairpins indicating a gradual decrease in volume.

ruhig

Handwritten musical score for Trombone and strings. The top staff is in treble clef with a key signature of one sharp (F#) and a 4/4 time signature, marked "Solo". It contains a melodic line with dynamics *f* and *f*. The bottom three staves are for strings (Violin I, Violin II, and Cello/Double Bass). The Violin I and II parts have dynamics *p* and *f*. The Cello/Double Bass part has dynamics *p* and *f*. The strings are marked with hairpins indicating a gradual increase in volume.

posante

Handwritten musical score for the first system, featuring four staves. The notation includes notes, rests, and dynamic markings such as *pp* and *all*. There are also some handwritten annotations like $\#p$ and $\#z$.

> poco gut ...

5

Handwritten musical score for the second system, featuring four staves. The notation includes notes, rests, and dynamic markings such as *din* and *mf*. There are also some handwritten annotations like $\#p$ and $\#z$.

Tempo ① Maestoso (etwas breiter wie Aufzugsteige)

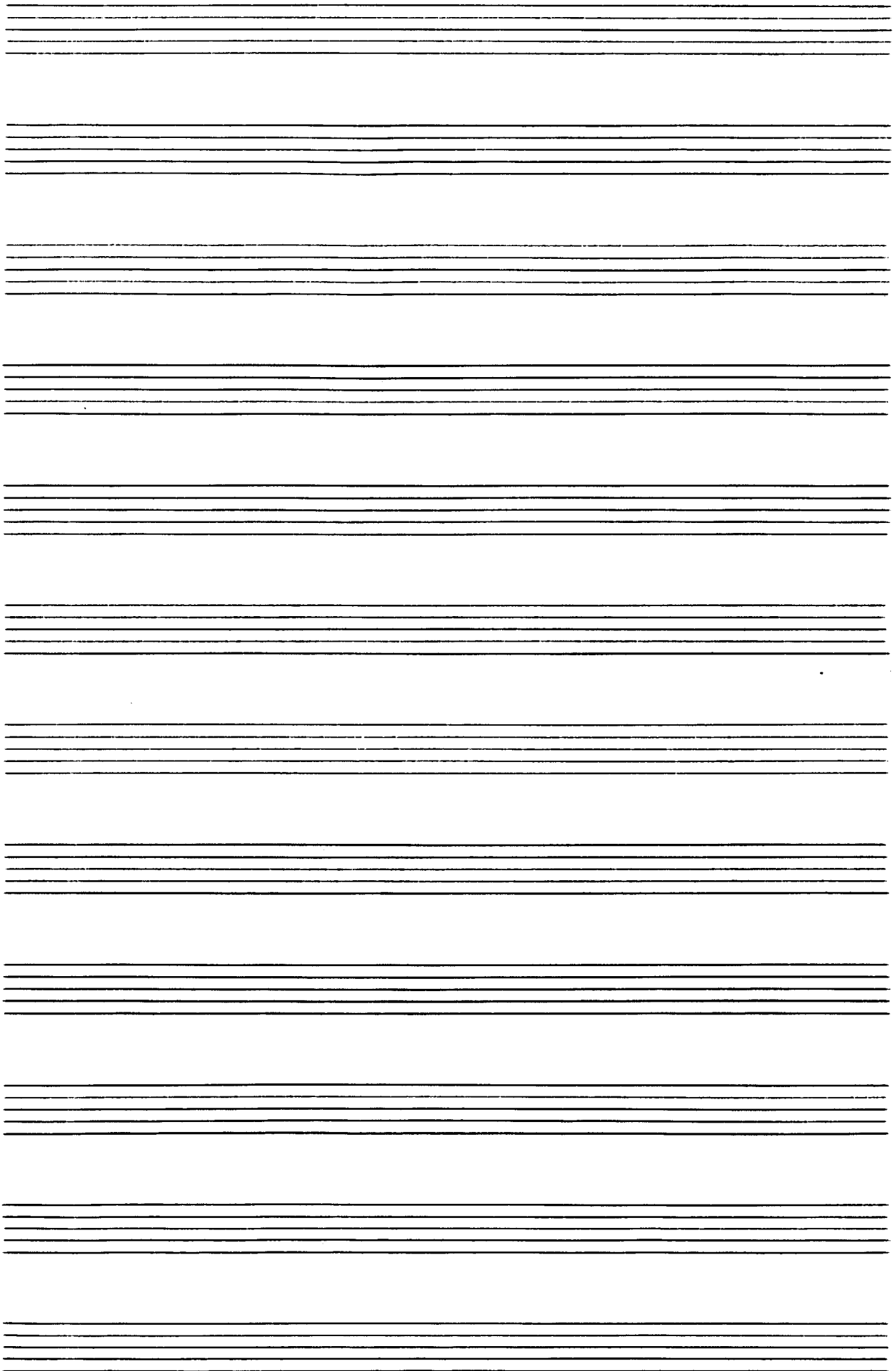
Handwritten musical score for the first system, measures 47-49. The score is written for five staves: Treble Clef (Trompete), Violin I, Violin II, Viola, and Cello/Double Bass. The key signature is one sharp (F#). The first measure (47) features a dynamic marking of *f* and a fermata over a quarter note G#4 in the trumpet part. The string parts play a rhythmic pattern of eighth notes. The second measure (48) continues the string pattern. The third measure (49) features a dynamic marking of *f* and a fermata over a quarter note G#4 in the trumpet part, with a triplet of eighth notes in the strings. The system concludes with a double bar line.

Handwritten musical score for the second system, measures 50-52. The score is written for five staves: Treble Clef (Trompete), Violin I, Violin II, Viola, and Cello/Double Bass. The key signature is one sharp (F#). The first measure (50) features a dynamic marking of *f* and a fermata over a quarter note G#4 in the trumpet part. The string parts play a rhythmic pattern of eighth notes. The second measure (51) continues the string pattern. The third measure (52) features a dynamic marking of *f* and a fermata over a quarter note G#4 in the trumpet part, with a triplet of eighth notes in the strings. The system concludes with a double bar line.

Handwritten musical score for the first system. It consists of five staves. The top staff is for the trumpet, with a treble clef and a key signature of one flat. The lower four staves are for the string quartet (violin I, violin II, viola, and cello), with a bass clef and a key signature of one flat. The music is divided into two measures by a vertical bar line. The first measure contains a melodic line for the trumpet and rhythmic patterns for the strings. The second measure continues the melodic line and includes some dynamic markings.

Handwritten musical score for the second system. It consists of five staves, similar to the first system. Above the first staff, there is a circled number '6' and the word 'quit' with a dashed line underneath it. The music continues with melodic and rhythmic elements for the trumpet and strings across two measures.

Handwritten musical score on ten staves. The notation includes various notes, rests, and dynamic markings. The first staff has a treble clef and a key signature of one sharp (F#). Above the first staff, the text "(ad) ad. lib." is written. The second staff has a treble clef and a key signature of one sharp (F#), with a circled "6" above it. The third staff has a treble clef and a key signature of one sharp (F#). The fourth staff has a treble clef and a key signature of one sharp (F#). The fifth staff has a treble clef and a key signature of one sharp (F#). The sixth staff has a treble clef and a key signature of one sharp (F#). The seventh staff has a treble clef and a key signature of one sharp (F#). The eighth staff has a treble clef and a key signature of one sharp (F#). The ninth staff has a treble clef and a key signature of one sharp (F#). The tenth staff has a treble clef and a key signature of one sharp (F#). A large, wavy, scribbled line is drawn across the staves from the second to the fifth staff, indicating a section to be played ad libitum.



2

Leute (erst 2te) bei h.c.)

Handwritten musical score for the first system, measures 1-4. It features a vocal line and a piano accompaniment. The piano part is in 4/4 time and includes a circled 'p' dynamic marking. The vocal line has a circled 'p' and a fermata over the first measure.

7 14

Handwritten musical score for the second system, measures 5-8. It continues the vocal and piano parts. The piano part includes a circled 'f' dynamic marking. The system concludes with a double bar line and a fermata.

26. out

ff

tr

8

15

proco sur

tr

ff

sehr (appassionata)

Handwritten musical score for the first system. The top staff is for the trumpet, marked with a circled 'F' and a dynamic marking of f . It contains a melodic line with a slur and accents over the notes. The piano accompaniment consists of four staves: the first two are for the right hand (treble and alto clefs) and the last two are for the left hand (bass and tenor clefs). The piano part features a rhythmic accompaniment of eighth notes and quarter notes, with dynamic markings of f and accents.

Handwritten musical score for the second system. The trumpet part continues with a melodic line, including a key signature change to one sharp (F#) and a dynamic marking of f . The piano accompaniment continues with a rhythmic accompaniment of eighth notes and quarter notes, with dynamic markings of f and accents.

Handwritten musical score for the first system. It consists of five staves. The top staff is for the trumpet, and the bottom four staves are for the string quartet (Violin I, Violin II, Viola, and Cello/Double Bass). The music is in 3/4 time and features a key signature of one sharp (F#). The first measure shows a melodic line in the trumpet and a rhythmic accompaniment in the strings. The second measure continues the melodic development with some chromaticism and a fermata over the final note.

Handwritten musical score for the second system. It consists of five staves, continuing the trumpet and string quartet parts from the first system. The music continues with similar melodic and rhythmic patterns. A circled '9' is written in the right margin of the system. The notation includes various dynamics, accents, and phrasing slurs.

(rubrics)

Handwritten musical score for the first system. The top staff is for the trumpet, showing a melodic line with a circled 'P' dynamic marking. The piano accompaniment consists of three staves (right hand and left hand) with 'ppp' dynamic markings. The bottom staff is a bass line with a few notes.

Handwritten musical score for the second system. The trumpet part continues with a melodic line and includes a 'cresc.' marking. The piano accompaniment also features 'cresc.' markings. The bottom staff continues with a few notes.

10

pesante

11

Handwritten musical score for the first system. The top staff is for the trumpet, showing a long note with an accent (>) and a slur. The bottom four staves represent the string quartet (Violin I, Violin II, Viola, and Cello/Bass), each with long notes and slurs. The key signature has one flat (B-flat).

Handwritten musical score for the second system. The top staff is for the trumpet, starting with a circled 'f' dynamic marking and a melodic line with slurs and accents. The bottom four staves represent the string quartet. The Violin I, Violin II, and Viola parts are marked with 'ff' and have slurs and accents. The Cello/Bass part is marked with 'p' and has a slur. The key signature has one flat (B-flat).

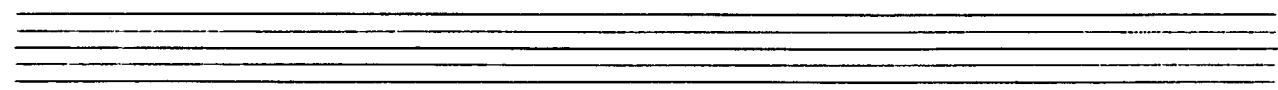
du

Handwritten musical score for the first system. It consists of five staves. The top staff is a vocal line with notes and a circled 'P' dynamic marking. The lower four staves are for piano accompaniment, with various notes, rests, and dynamic markings like 'p' and 'pp'. There are also some handwritten annotations like '>' and '< >'.

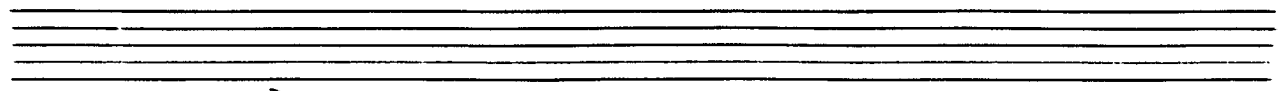
(poco più) du

12

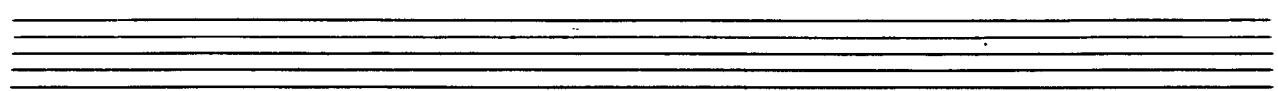
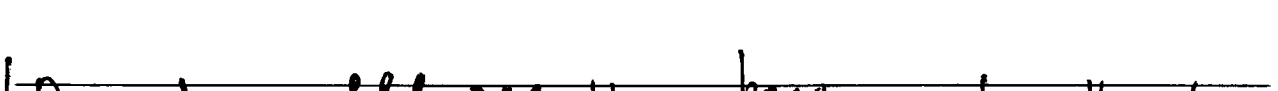
Handwritten musical score for the second system. It consists of five staves. The top staff is a vocal line with notes and dynamic markings. The lower four staves are for piano accompaniment, with various notes, rests, and dynamic markings like 'f', 'pp', and 'p'. There are also some handwritten annotations like '>' and '< >'. At the bottom left, there is a circled 'ff' and 'p137'. At the bottom right, there is a circled 'p' and 'BWV 10



frei Solo
lento



accel. ovess.



Handwritten musical score for Trompete and Streichorchester (3 Teile). The score is written on five staves. The first staff is for the Trompete (Trumpet), and the other four are for the strings (Streichorchester). The score is marked "frei" (ad libitum) at the beginning and end. A circled number "16" is written in the upper right corner. The music features a melodic line in the trumpet part with various ornaments and dynamics, and a harmonic accompaniment in the strings. The key signature is one sharp (F#), and the time signature is 4/4. The score is marked with "ppp" (pianissimo) in the string parts.

3

sehr langsam und rhythmisch

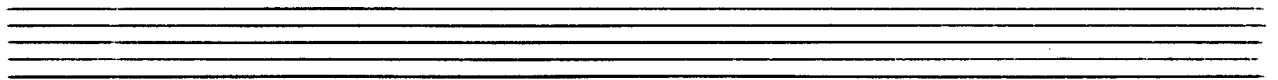
Handwritten musical score for strings and percussion. The score is written on five staves. The first staff is for the Violin I part, marked with a circled 'p' and a 3/4 time signature. The second staff is for the Violin II part, also marked with a circled 'p'. The third staff is for the Viola part, marked with a circled 'p'. The fourth staff is for the Cello part, labeled 'celli', marked with a circled 'p'. The fifth staff is for the Percussion part, labeled 'Perc', marked with a circled 'p'. The score consists of four measures. The first measure has a 3/4 time signature. The second measure has a 4/4 time signature. The third and fourth measures have a 3/4 time signature. The key signature changes from one sharp (F#) to one flat (Bb) in the third measure. The score includes various musical notations such as notes, rests, beams, and dynamic markings like 'p' and 'f'.

17 22 28

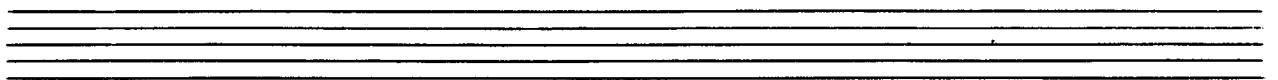
Handwritten musical score for the first system, measures 17-28. The score is written on five staves. The first staff (treble clef) contains a melodic line with a circled 'f' dynamic marking and a circled '22' above it. The second staff (treble clef) contains a melodic line with a circled 'f' dynamic marking. The third staff (treble clef) contains a rhythmic accompaniment with a circled 'f' dynamic marking and a circled '22' above it. The fourth staff (bass clef) contains a melodic line with a circled 'f' dynamic marking. The fifth staff (bass clef) contains a rhythmic accompaniment with a circled 'f' dynamic marking. The score is divided into three measures by vertical bar lines. The first measure contains a circled '17' above it. The second measure contains a circled '22' above it. The third measure contains a circled '28' above it. The score is written in a style that suggests it is a working draft or a composer's sketch.

Handwritten musical score for the second system, measures 29-40. The score is written on five staves. The first staff (treble clef) contains a melodic line with a circled '29' above it. The second staff (treble clef) contains a melodic line with a circled '29' above it. The third staff (treble clef) contains a rhythmic accompaniment with a circled '29' above it. The fourth staff (bass clef) contains a melodic line with a circled '29' above it. The fifth staff (bass clef) contains a rhythmic accompaniment with a circled '29' above it. The score is divided into three measures by vertical bar lines. The first measure contains a circled '29' above it. The second measure contains a circled '30' above it. The third measure contains a circled '31' above it. The score is written in a style that suggests it is a working draft or a composer's sketch.

Handwritten musical score for the first system, consisting of five staves. The notation includes various notes, rests, and dynamic markings such as accents (^) and hairpins (ζ). The first staff has a treble clef and a key signature of one sharp (F#). The second staff has a treble clef and a key signature of one sharp (F#). The third staff has a treble clef and a key signature of one sharp (F#). The fourth and fifth staves are grouped by a brace and have a bass clef and a key signature of one sharp (F#). The system is divided into three measures.



Handwritten musical score for the second system, consisting of five staves. The notation includes various notes, rests, and dynamic markings such as accents (^) and hairpins (ζ). The first staff has a treble clef and a key signature of one flat (Bb). The second staff has a treble clef and a key signature of one flat (Bb). The third staff has a treble clef and a key signature of one flat (Bb). The fourth and fifth staves are grouped by a brace and have a bass clef and a key signature of one flat (Bb). The system is divided into three measures.



18 23 29

Handwritten musical score for the first system, measures 18-29. The score is written on five staves. The first staff (top) contains notes and rests, with a key signature change to one flat (B-flat) indicated by a 'b' and a 'f' symbol. The second staff contains notes and rests, with a sharp sign (#) and a fermata-like symbol. The third staff contains notes and rests, with a sharp sign (#) and a fermata-like symbol. The fourth staff contains notes and rests, with a sharp sign (#) and a fermata-like symbol. The fifth staff (bottom) contains notes and rests, with a sharp sign (#) and a fermata-like symbol. The notation is dense and includes various accidentals and dynamics markings.

Handwritten musical score for the second system, measures 30-41. The score is written on five staves. The first staff (top) contains notes and rests, with a sharp sign (#) and a fermata-like symbol. The second staff contains notes and rests, with a sharp sign (#) and a fermata-like symbol. The third staff contains notes and rests, with a sharp sign (#) and a fermata-like symbol. The fourth staff contains notes and rests, with a sharp sign (#) and a fermata-like symbol. The fifth staff (bottom) contains notes and rests, with a sharp sign (#) and a fermata-like symbol. The notation is dense and includes various accidentals and dynamics markings.

25

29

19

30

dim >

cresc.

26

Handwritten musical score for the first system, featuring five staves. The notation includes various rhythmic patterns, accidentals, and dynamic markings such as *f* and *pizz*. The score is written in a style typical of a composer's manuscript.

Handwritten musical score for the second system, including a *brilliant* marking and circled measure numbers 20, 25, and 31. The notation features complex rhythmic patterns and dynamic markings such as *ero* and *ff*. The score is written in a style typical of a composer's manuscript.

Handwritten musical score for the first system. The top staff is for the trumpet, showing a melodic line with various accidentals (sharps, naturals, flats) and slurs. The bottom four staves represent the string quartet (Violin I, Violin II, Viola, and Cello/Double Bass), with notes and slurs indicating harmonic support and phrasing.

Handwritten musical score for the second system. The trumpet part continues with a melodic line, and the string quartet provides harmonic accompaniment. The notation includes slurs, accents, and various accidentals across all staves.

Handwritten musical score for a string quartet. The score consists of five staves. At the top right, there is a circled section number '21' followed by '26' and '32'. Above the first staff, there is a circled '21' and a circled '26' with '32' below them. The notation includes various notes, rests, and dynamic markings such as *ffp*. There are also some handwritten annotations like 'Coda' and a large bracket spanning across the staves.

Handwritten musical score for a trumpet part. The top staff is labeled 'frei' and contains a melodic line with accents (^) and slurs. To the right of this staff, there is a circled '27' and the text 'D.C. al fine' with a double bar line and repeat sign. Below the trumpet staff are four staves for the string quartet, which are mostly filled with long, sweeping lines indicating sustained notes or glissandos.

CODA Prestissimo

33

Für