

Notenheft

SONATE 1969

Für Klavier

Adolf Scherbaum

Handwritten musical notation for the first system. It consists of two staves. The upper staff is in treble clef and contains several notes with accents (^) and a dynamic marking of *p*. The lower staff is in bass clef and contains a series of notes, some with accents (^) and a dynamic marking of *p*. There are also some scribbles and additional markings above the notes.

Handwritten musical notation for the second system. It consists of two staves. The upper staff is in treble clef and contains several chords and notes with dynamic markings of *f*. The lower staff is in bass clef and contains several chords and notes with dynamic markings of *f*. There are also some scribbles and additional markings above the notes.

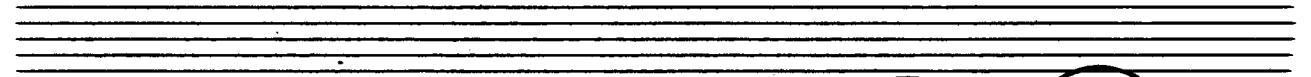
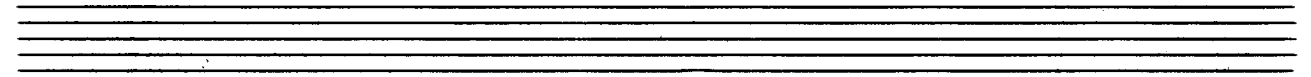
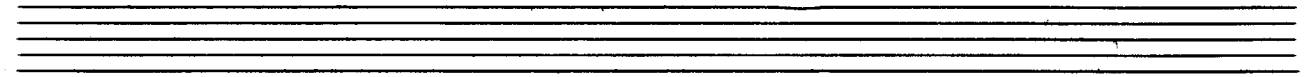
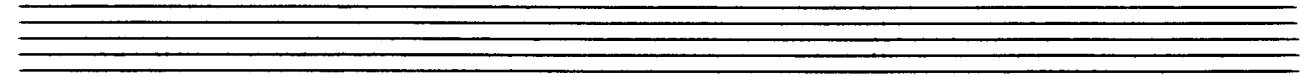
Handwritten musical notation for the third system. It consists of two staves. The upper staff is in treble clef and contains several notes with accents (^) and a dynamic marking of *pp*. The lower staff is in bass clef and contains several notes with accents (^) and a dynamic marking of *pp*. There is a double bar line in the middle of the system, and some scribbles and additional markings above the notes.

Handwritten musical notation for the fourth system. It consists of two staves. The upper staff is in treble clef and contains several notes with accents (^) and a dynamic marking of *pp*. The lower staff is in bass clef and contains several notes with accents (^) and a dynamic marking of *pp*. There is a wavy line in the lower staff, and some scribbles and additional markings above the notes.

Handwritten musical notation for the first system. The top staff is in treble clef and contains four measures of chords, each marked with a sharp sign (#). The bottom staff is in bass clef and contains four measures of chords, also marked with a sharp sign (#). There are some handwritten annotations, including a circled 'p' and some scribbles.

Handwritten musical notation for the second system. The top staff is in treble clef and contains a melodic line with a slur over the first two measures and a fermata over the last two. The bottom staff is in bass clef and contains chords. There are several handwritten annotations, including a circled 'p', slurs, and accents.

Handwritten musical notation for the third system. The top staff is in treble clef and contains a melodic line with a slur and a fermata. The bottom staff is in bass clef and contains a wavy line, possibly representing a tremolo or a specific texture. There are several handwritten annotations, including a circled 'p', slurs, and accents.

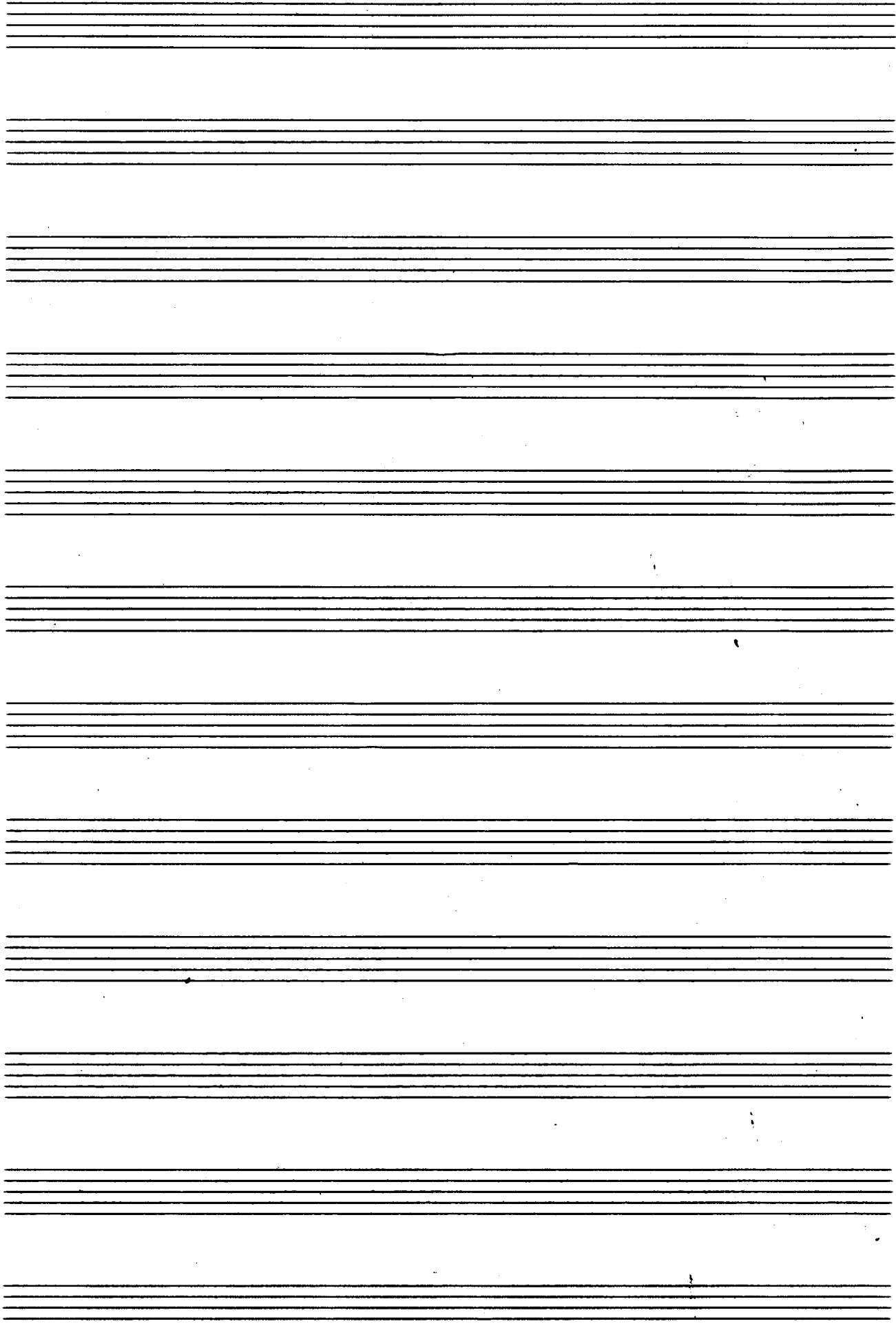


Handwritten musical notation for the first system. The treble clef staff begins with a treble clef, a key signature of one sharp (F#), and a 4/4 time signature. It contains a series of eighth notes followed by a long horizontal line. The bass clef staff contains a series of eighth notes. A dynamic marking 'p' is present in the second measure.

Handwritten musical notation for the second system. The treble clef staff features chords and notes, with a dynamic marking 'f'. The bass clef staff contains chords and notes.

Handwritten musical notation for the third system. The treble clef staff contains chords and notes, with a dynamic marking 'f'. The bass clef staff contains notes and rests. The instruction 'accel.' is written above the bass staff.

Handwritten musical notation for the fourth system. The treble clef staff contains notes and rests. The bass clef staff contains notes and rests. A large wavy line is drawn across the bottom of the system.



2

lento

Handwritten musical notation for the first system, measures 1-2. The music is in 4/8 time, marked *lento* and *pp*. The right hand features a melodic line with slurs and accidentals, while the left hand provides harmonic support with chords and single notes.

Handwritten musical notation for the second system, measures 3-5. The right hand continues the melodic development with slurs and dynamic markings. The left hand features chords and moving lines, with some notes marked with accents.

Handwritten musical notation for the third system, measures 6-8. The right hand has a melodic line with slurs and dynamic markings like *p* and *f*. The left hand has chords and moving lines, with some notes marked with accents.

Handwritten musical notation for the fourth system, measures 9-11. The right hand has a melodic line with slurs and dynamic markings like *f* and *p*. The left hand has chords and moving lines, with some notes marked with accents. The system ends with a double bar line.

Handwritten musical notation for the first system. The right staff (treble clef) contains a melodic line with slurs and accents. The left staff (bass clef) contains a bass line with chords. A dynamic marking *pp* is written above the first measure of the right staff.

Handwritten musical notation for the second system. The right staff (treble clef) contains a melodic line with slurs and accents. The left staff (bass clef) contains a bass line with chords. Dynamic markings *mf* and *f* are present.

Handwritten musical notation for the third system. The right staff (treble clef) contains a melodic line with slurs and accents. The left staff (bass clef) contains a bass line with chords. A dynamic marking *ff* is present.

Handwritten musical notation for the fourth system. The right staff (treble clef) contains a melodic line with slurs and accents. The left staff (bass clef) contains a bass line with chords.

Handwritten musical notation for the first system. It features a treble clef and a grand staff. The music includes a melodic line with a slur and a dynamic marking 'pp' on the left and 'f' on the right. Chords are indicated by vertical lines with accidentals.

Handwritten musical notation for the second system. It features a treble clef and a grand staff. The music includes a melodic line with a slur and a dynamic marking 'pp' on the left and 'f' on the right. Chords are indicated by vertical lines with accidentals.

Handwritten musical notation for the third system. It features a treble clef and a grand staff. The music includes a melodic line with a slur and a dynamic marking 'pp' on the left and 'f' on the right. Chords are indicated by vertical lines with accidentals.

3

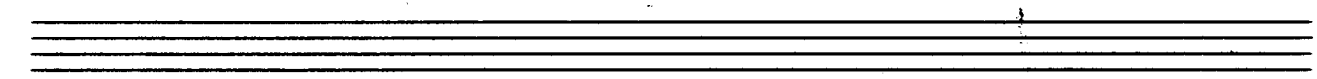
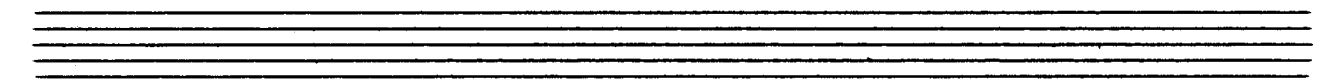
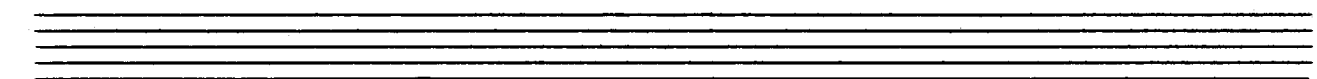
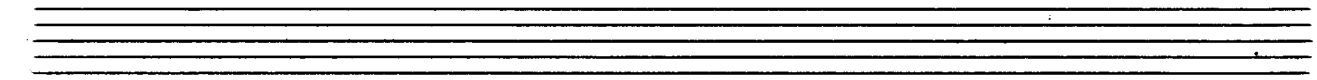
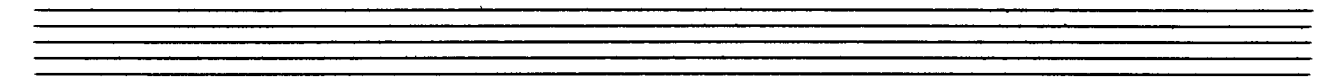
Presto

(auf 2) (hört)

Handwritten musical notation for the first system, measures 1-3. The right hand has a treble clef and a 2/8 time signature. The left hand has a bass clef. The music features eighth notes and chords with dynamic markings like 'ff' and accents.

Handwritten musical notation for the second system, measures 4-6. The notation continues with eighth notes and chords, including accents and dynamic markings.

Handwritten musical notation for the third system, measures 7-9. The notation includes a double bar line and dynamic markings like 'ff'.



Tempo cresc...

Handwritten musical notation for the first system, measures 1-4. The right hand (treble clef) begins with a piano (*ppp*) dynamic and features a melodic line with a sharp sign (#) in the second measure. The left hand (bass clef) plays a rhythmic accompaniment of eighth notes with a 7-fingering indicated. A slur covers the first two measures of the right hand, and another slur covers the last two measures. Accents (^) are placed above the first notes of the second and fourth measures.

Handwritten musical notation for the second system, measures 5-8. The right hand continues the melodic line with a slur over measures 5-6 and another slur over measures 7-8. Dynamics include *mp* (mezzo-piano) and *f* (forte). The left hand maintains the eighth-note accompaniment with a 7-fingering. A slur covers the first two measures of the right hand, and another slur covers the last two measures. Accents (^) are placed above the first notes of the second and fourth measures.

Handwritten musical notation for the third system, measures 9-12. The right hand features a melodic line with a slur over measures 9-10 and another slur over measures 11-12. Dynamics include *f* (forte) and *ff* (fortissimo). The left hand continues the eighth-note accompaniment with a 7-fingering. A slur covers the first two measures of the right hand, and another slur covers the last two measures. Accents (^) are placed above the first notes of the second and fourth measures.

Handwritten musical notation for the first system. The treble clef staff contains a melodic line with a slur over two measures, marked with accents (^) and a forte (f) dynamic. The bass clef staff provides harmonic support with chords and single notes, also marked with accents (^).

Handwritten musical notation for the second system. The treble clef staff features a complex rhythmic pattern with many beamed notes, marked with accents (^) and a forte (f) dynamic. The bass clef staff continues with chords and single notes, marked with accents (^).

Handwritten musical notation for the third system. The treble clef staff has a melodic line with a slur and accents (^). The bass clef staff includes a wavy line indicating a tremolo or sustained vibration, marked with piano (p) and accents (^).

Handwritten musical notation for the fourth system. The treble clef staff has a long slur over several measures, with a 'Gliss' marking above it. The bass clef staff has a piano (pp) dynamic marking and accents (^).

4
 pp 8
 #
 +
 +
 +
 #
 +
 #
 +
 Closen
 pppp
 D.C.
 mit

sempre cresc...
 (auf Saiten)

ppp

777

