

Improvisationen

über einen Choral

1969 für  
Orgel

Adolf Scherbaum

*Andante*

Handwritten musical notation for the first system. It features a treble clef and a 5/4 time signature. The melody is written on a single staff with a circled 'P' dynamic marking. The notes are: G4 (quarter), A4 (quarter), B4 (quarter), C5 (quarter), D5 (quarter), E5 (quarter), F5 (quarter), G5 (quarter), F5 (quarter), E5 (quarter), D5 (quarter), C5 (quarter), B4 (quarter), A4 (quarter), G4 (quarter). The piece ends with a double bar line.

Handwritten musical notation for the second system. It features a treble clef and a 4/4 time signature. The melody is written on a single staff. The notes are: G4 (quarter), A4 (quarter), B4 (quarter), C5 (quarter), D5 (quarter), E5 (quarter), F5 (quarter), G5 (quarter), F5 (quarter), E5 (quarter), D5 (quarter), C5 (quarter), B4 (quarter), A4 (quarter), G4 (quarter). The piece ends with a double bar line.

Handwritten musical notation for the first system. The treble clef is on the top staff, and the bass clef is on the bottom staff. The key signature has one flat (B-flat), and the time signature is 3/4. The melody in the treble clef consists of four measures:  $b_4$  quarter,  $a_4$  quarter,  $b_4$  quarter,  $a_4$  quarter;  $a_4$  quarter,  $b_4$  quarter,  $a_4$  quarter,  $b_4$  quarter;  $b_4$  quarter,  $a_4$  quarter,  $b_4$  quarter,  $a_4$  quarter;  $a_4$  quarter,  $b_4$  quarter,  $a_4$  quarter,  $b_4$  quarter. The bass line has whole notes:  $a_3$ ,  $a_3$ ,  $b_3$ ,  $b_3$ .

Handwritten musical notation for the second system. The treble clef melody continues:  $b_4$  quarter,  $a_4$  quarter,  $b_4$  quarter,  $a_4$  quarter;  $a_4$  quarter,  $b_4$  quarter,  $a_4$  quarter,  $b_4$  quarter;  $a_4$  quarter,  $b_4$  quarter,  $a_4$  quarter,  $b_4$  quarter;  $a_4$  quarter,  $b_4$  quarter,  $a_4$  quarter,  $b_4$  quarter. The bass line has whole notes:  $a_3$ ,  $a_3$ ,  $b_3$ ,  $b_3$ .

Handwritten musical notation for the third system. The treble clef melody concludes:  $b_4$  quarter,  $a_4$  quarter,  $b_4$  quarter,  $a_4$  quarter;  $a_4$  quarter,  $b_4$  quarter,  $a_4$  quarter,  $b_4$  quarter;  $a_4$  quarter,  $b_4$  quarter,  $a_4$  quarter,  $b_4$  quarter. The bass line has whole notes:  $a_3$ ,  $a_3$ ,  $b_3$ ,  $b_3$ .

Handwritten musical score for the first system. It consists of three staves: treble, middle, and bass. The treble staff begins with a treble clef, a key signature of one flat (B-flat), and a circled 'p' for piano. The middle staff has a 4/4 time signature. The bass staff has a bass clef. The music is written in a four-measure phrase with a slur over the top staff. The notes in the treble staff are: G4, B-flat4, G4, B-flat4, G4, B-flat4, G4, B-flat4. The middle staff contains chords: G4, B-flat4, G4, B-flat4, G4, B-flat4, G4, B-flat4. The bass staff contains notes: G3, B-flat3, G3, B-flat3, G3, B-flat3, G3, B-flat3.

Handwritten musical score for the second system. It consists of three staves: treble, middle, and bass. The treble staff begins with a treble clef, a key signature of one flat (B-flat), and a circled 'p' for piano. The middle staff has a 4/4 time signature. The bass staff has a bass clef. The music is written in a four-measure phrase with a slur over the top staff. The notes in the treble staff are: G4, B-flat4, G4, B-flat4, G4, B-flat4, G4, B-flat4. The middle staff contains chords: G4, B-flat4, G4, B-flat4, G4, B-flat4, G4, B-flat4. The bass staff contains notes: G3, B-flat3, G3, B-flat3, G3, B-flat3, G3, B-flat3.

Handwritten musical score for the third system. It consists of three staves: treble, middle, and bass. The treble staff begins with a treble clef, a key signature of one flat (B-flat), and a circled 'p' for piano. The middle staff has a 4/4 time signature. The bass staff has a bass clef. The music is written in an eight-measure phrase with a slur over the top staff. The notes in the treble staff are: G4, B-flat4, G4, B-flat4, G4, B-flat4, G4, B-flat4, G4, B-flat4, G4, B-flat4. The middle staff contains chords: G4, B-flat4, G4, B-flat4, G4, B-flat4, G4, B-flat4, G4, B-flat4, G4, B-flat4. The bass staff contains notes: G3, B-flat3, G3, B-flat3, G3, B-flat3, G3, B-flat3, G3, B-flat3, G3, B-flat3.

Handwritten musical score for the first system, consisting of three staves. The top staff contains notes with flats (b) and a whole note (o). The middle staff contains notes with sharps (#) and a whole note (o). The bottom staff contains notes with flats (b) and a whole note (o). The system is divided into four measures by vertical bar lines.

(poco rit...)

Handwritten musical score for the second system, consisting of three staves. The top staff has a dynamic marking of *pp* and notes with flats (b) and a whole note (o). The middle staff has notes with sharps (#) and a whole note (o). The bottom staff has notes with flats (b) and a whole note (o). The system is divided into four measures by vertical bar lines. To the right of the staves, there are three sets of double slanted lines (ff) indicating fortissimo dynamics.

*Adagio*

Handwritten musical score for the third system, consisting of three staves. The top staff has a dynamic marking of *pp* and notes with sharps (#) and a whole note (o). The middle staff has notes with flats (b) and a whole note (o). The bottom staff has a whole note (o). The system is divided into four measures by vertical bar lines.

*Andante* | *Andante*

Handwritten musical notation for the first system. The right hand contains two measures of music with slurs and ties. The left hand has a circled 'p' and a '4' below the staff.

Handwritten musical notation for the second system. The right hand contains two measures of music with slurs and ties. The left hand has a '4' below the staff.

Handwritten musical notation for the third system. The right hand contains two measures of music with slurs and ties. The left hand has a '4' below the staff.

Handwritten musical notation for the first system. The treble clef staff contains a melodic line with a slur over two measures. The first measure contains notes F#4, G#4, and A4. The second measure contains notes B4, C5, and B4. The bass clef staff contains a whole note chord F#4.

Handwritten musical notation for the second system. The treble clef staff contains a melodic line with a slur over two measures. The first measure contains notes F#4, G#4, and A4. The second measure contains notes B4, C5, and B4. The bass clef staff contains a whole note chord F4.

(poco rit)

Handwritten musical notation for the third system. The treble clef staff contains a melodic line with a slur over two measures. The first measure contains notes F#4, G#4, and A4. The second measure contains notes B4, C5, and B4. The bass clef staff contains a whole note chord F4.

Adagio

Handwritten musical notation for the first system. The treble clef is on the top staff. The key signature has one sharp (F#). The melody starts with a slur over the first two measures, followed by a fermata. The piano accompaniment consists of a few notes in the left hand.

Handwritten musical notation for the second system. The treble clef is on the top staff. The key signature has one sharp (F#). The melody continues with a slur and a fermata. The piano accompaniment has some notes in the left hand.

Handwritten musical notation for the third system. The treble clef is on the top staff. The key signature has one sharp (F#). The melody concludes with a slur and a fermata. The piano accompaniment has some notes in the left hand.



Handwritten musical score system 1. The system consists of three staves. The top staff is a treble clef with a key signature of one flat (Bb) and a common time signature (C). It contains a melodic line with a slur over the first six notes. The middle staff is a bass clef with a key signature of one flat (Bb) and a common time signature (C). It contains a bass line with a slur over the first two notes and a fermata over the second note. The bottom staff is empty.

Handwritten musical score system 2. The system consists of three staves. The top staff is a treble clef with a key signature of one flat (Bb) and a common time signature (C). It contains a melodic line with a slur over the first six notes. The middle staff is a bass clef with a key signature of one flat (Bb) and a common time signature (C). It contains a bass line with a slur over the first two notes and a fermata over the second note. The bottom staff is empty.

Handwritten musical score system 3. The system consists of three staves. The top staff is a treble clef with a key signature of one flat (Bb) and a common time signature (C). It contains a melodic line with a slur over the first six notes. The middle staff is a bass clef with a key signature of one flat (Bb) and a common time signature (C). It contains a bass line with a slur over the first two notes and a fermata over the second note. The bottom staff is empty.

rit

Tempo

Handwritten musical notation for the first system. It consists of three staves. The top staff has a treble clef and a key signature of one flat (B-flat). The notation includes quarter notes, eighth notes, and rests. The second and third staves contain rests and a few notes, with a slur over the bottom staff in the final measure.

rit.....

Handwritten musical notation for the second system. It consists of three staves. The top staff has a treble clef and a key signature of one flat. The notation includes quarter notes, eighth notes, and rests. The second and third staves contain rests and a few notes, with a slur over the bottom staff in the final measure.

Handwritten musical notation for the third system. It consists of three staves. The top staff has a treble clef and a key signature of one flat. The notation includes quarter notes, eighth notes, and rests. The second and third staves contain rests and a few notes, with a slur over the bottom staff in the final measure.

bweit

Handwritten musical score for the first system. It consists of three staves: treble, alto, and bass. The treble staff has a melodic line with notes G4, A4, B4, C5, and D5. The alto staff has notes G4, A4, B4, and C5. The bass staff has notes G3, A3, and B3. There are dynamic markings 'f' and 'ff' and a '3' marking in the alto staff. A large slur covers the first two measures.

Handwritten musical score for the second system. It consists of three staves: treble, alto, and bass. The treble staff has notes G4, A4, B4, C5, and D5. The alto staff has notes G4, A4, B4, and C5. The bass staff has notes G3, A3, and B3. There are dynamic markings 'f' and 'ff' and a '4' marking in the alto staff. A large slur covers the first two measures.

reworkings →

Handwritten musical score for the third system, labeled 'reworkings'. It consists of three staves: treble, alto, and bass. The treble staff has notes G4, A4, B4, C5, and D5. The alto staff has notes G4, A4, B4, and C5. The bass staff has notes G3, A3, and B3. There are dynamic markings 'f' and 'ff' and a '4' marking in the alto staff. A large slur covers the first two measures.

acuel.

Handwritten musical notation for the first system. It features a treble clef and a staff with notes and accidentals. The notation includes a sequence of notes with flats and naturals, and a sharp sign. There are also some markings that look like 'y' and 'b'.

Handwritten musical notation for the second system. It features a treble clef and a staff with notes and accidentals. The notation includes a sequence of notes with sharps and naturals, and a sharp sign. There are also some markings that look like 'y' and 'b'.

buest (Hologid)

Handwritten musical notation for the third system. It features a treble clef and a staff with notes and accidentals. The notation includes a sequence of notes with sharps and naturals, and a sharp sign. There are also some markings that look like 'y' and 'b'.

diminuendo →

Handwritten musical score for the first system. It consists of two staves: a piano staff (treble clef) and a bass staff (bass clef). The music is written in 2/4 time with a key signature of one sharp (F#). The first measure contains a piano chord (F#4, A4, C5) and a bass chord (F#2, A2, C3). The second measure contains a piano chord (G#4, B4, D5) and a bass chord (G#2, B2, D3). The third measure contains a piano chord (A#4, C5, E5) and a bass chord (A#2, C3, E3). The fourth measure contains a piano chord (B4, D5, F#5) and a bass chord (B2, D3, F#3). A dynamic marking 'diminuendo' with an arrow pointing right is written above the piano staff.

Handwritten musical score for the second system. It consists of two staves: a piano staff (treble clef) and a bass staff (bass clef). The music is written in 2/4 time with a key signature of one sharp (F#). The first measure contains a piano chord (C5, E5, G5) and a bass chord (C2, E2, G2). The second measure contains a piano chord (D#4, F#4, A4) and a bass chord (D#2, F#2, A2). The third measure contains a piano chord (E#4, G#4, B4) and a bass chord (E#2, G#2, B2). The fourth measure contains a piano chord (F#4, A4, C5) and a bass chord (F#2, A2, C3). The piano staff has melodic lines with slurs and accents.

Orchest.

Handwritten musical score for the third system. It consists of two staves: a piano staff (treble clef) and a bass staff (bass clef). The music is written in 2/4 time with a key signature of one sharp (F#). The first measure contains a piano chord (F#4, A4, C5) and a bass chord (F#2, A2, C3). The second measure contains a piano chord (G#4, B4, D5) and a bass chord (G#2, B2, D3). The third measure contains a piano chord (A#4, C5, E5) and a bass chord (A#2, C3, E3). The fourth measure contains a piano chord (B4, D5, F#5) and a bass chord (B2, D3, F#3). The piano staff has melodic lines with slurs and accents. The word 'Orchest.' is written above the piano staff.

grad.

Handwritten musical notation for the first system, featuring a treble and bass clef. The treble clef part has a key signature of one sharp (F#) and a 3/8 time signature. A bracket above the first two measures is labeled with a '6'. The notation includes various notes, rests, and accidentals.

Handwritten musical notation for the second system, continuing the piece. It features a treble and bass clef. The treble clef part has a key signature of two sharps (F# and C#). The notation includes various notes, rests, and accidentals.

Handwritten musical notation for the third system, continuing the piece. It features a treble and bass clef. The treble clef part has a key signature of two sharps (F# and C#). The notation includes various notes, rests, and accidentals.

Handwritten musical notation system 1. It consists of three staves. The top staff has a treble clef and contains a melodic line with several measures of music, including a key signature change to one flat. The middle and bottom staves appear to be accompaniment, with some notes and rests visible.

Handwritten musical notation system 2. It consists of three staves. The top staff has a treble clef and contains a melodic line with several measures of music, including a key signature change to one flat. The middle and bottom staves appear to be accompaniment, with some notes and rests visible.

Handwritten musical notation system 3. It consists of three staves. The top staff has a treble clef and contains a melodic line with several measures of music, including a key signature change to one flat. The middle and bottom staves appear to be accompaniment, with some notes and rests visible.

Handwritten musical notation for the first system. It consists of a treble clef staff and a bass clef staff. The key signature has one sharp (F#). The time signature is 6/8. The first measure contains a melodic line with sixteenth notes (F#, G, A, B, C, D) and a bass line with a whole note (F#). The second measure contains a melodic line with sixteenth notes (F#, G, A, B, C, D) and a bass line with a whole note (F#). The third measure contains a melodic line with sixteenth notes (F#, G, A, B, C, D) and a bass line with a whole note (F#). The fourth measure contains a melodic line with sixteenth notes (F#, G, A, B, C, D) and a bass line with a whole note (F#).

Handwritten musical notation for the second system. It consists of a treble clef staff and a bass clef staff. The key signature has one sharp (F#). The time signature is 4/4. The first measure contains a melodic line with eighth notes (F#, G, A, B, C, D) and a bass line with a whole note (F#). The second measure contains a melodic line with eighth notes (F#, G, A, B, C, D) and a bass line with a whole note (F#). The third measure contains a melodic line with eighth notes (F#, G, A, B, C, D) and a bass line with a whole note (F#). The fourth measure contains a melodic line with eighth notes (F#, G, A, B, C, D) and a bass line with a whole note (F#).

Handwritten musical notation for the third system. It consists of a treble clef staff and a bass clef staff. The key signature has one sharp (F#). The time signature is 4/4. The first measure contains a melodic line with eighth notes (F#, G, A, B, C, D) and a bass line with a whole note (F#). The second measure contains a melodic line with eighth notes (F#, G, A, B, C, D) and a bass line with a whole note (F#). The third measure contains a melodic line with eighth notes (F#, G, A, B, C, D) and a bass line with a whole note (F#). The fourth measure contains a melodic line with eighth notes (F#, G, A, B, C, D) and a bass line with a whole note (F#).



Handwritten musical notation for the first system. It consists of three staves: treble, alto, and bass. The treble staff has a key signature of one sharp (F#) and contains a sequence of notes: F#, G, A, B, C, D, E, F. The alto and bass staves contain notes and rests, with a 'y' symbol in the alto staff. A bracket spans the first two measures of the treble staff.

Handwritten musical notation for the second system. It consists of three staves: treble, alto, and bass. The treble staff has a key signature of one sharp (F#) and contains notes: F#, G, A, B, C, D, E, F. The alto and bass staves contain notes and rests, with a 'b' symbol in the alto staff. A bracket spans the first two measures of the treble staff.

Handwritten musical notation for the third system. It consists of three staves: treble, alto, and bass. The treble staff has a key signature of one sharp (F#) and contains notes: F#, G, A, B, C, D, E, F. The alto and bass staves contain notes and rests, with a 'y' symbol in the alto staff. A bracket spans the first two measures of the treble staff.

6

Handwritten musical notation for the first system, measures 6-7. The system consists of three staves. The top staff is in treble clef with a key signature of one sharp (F#) and contains a sequence of notes: F#4, G4, A4, B4, C5, D5, E5, F#5. The middle staff is in bass clef and contains notes: F#3, G3, A3, B3, C4, D4, E4, F#4. The bottom staff is empty. Measures 6 and 7 are indicated by a bracket above the top staff.

Handwritten musical notation for the second system, measures 8-9. The system consists of three staves. The top staff is in treble clef with a key signature of one sharp (F#) and contains a sequence of notes: F#4, G4, A4, B4, C5, D5, E5, F#5. The middle staff is in bass clef and contains notes: F#3, G3, A3, B3, C4, D4, E4, F#4. The bottom staff is empty. Measures 8 and 9 are indicated by a bracket above the top staff.

Handwritten musical notation for the third system, measures 10-12. The system consists of three staves. The top staff is in treble clef with a key signature of one sharp (F#) and contains a sequence of notes: F#4, G4, A4, B4, C5, D5, E5, F#5. The middle staff is in bass clef and contains notes: F#3, G3, A3, B3, C4, D4, E4, F#4. The bottom staff is empty. Measures 10, 11, and 12 are indicated by brackets above the top staff.

|  |  |  |  |  |
|--|--|--|--|--|
|  |  |  |  |  |
|--|--|--|--|--|

|  |  |  |  |  |
|--|--|--|--|--|
|  |  |  |  |  |
|--|--|--|--|--|

|  |  |  |  |  |
|--|--|--|--|--|
|  |  |  |  |  |
|--|--|--|--|--|

Handwritten musical notation for the first system. It consists of two staves: a treble clef on top and a bass clef on the bottom. The key signature is one sharp (F#). A bracket above the first two measures of the treble staff indicates a 6-measure phrase. The notation includes various notes and rests, with some notes beamed together.

Handwritten musical notation for the second system. It consists of two staves: a treble clef on top and a bass clef on the bottom. The key signature is one sharp (F#). A bracket above the first two measures of the treble staff indicates a 6-measure phrase. The notation includes various notes and rests, with some notes beamed together.

Handwritten musical notation for the third system. It consists of two staves: a treble clef on top and a bass clef on the bottom. The key signature is one sharp (F#). A bracket above the first two measures of the treble staff indicates a 6-measure phrase. The notation includes various notes and rests, with some notes beamed together.

Handwritten musical notation for the first system. It consists of two staves: a treble clef staff on top and a bass clef staff on the bottom. The key signature is one sharp (F#), and the time signature is common time (C). The first measure shows a treble staff with a half note chord (F#, G, A, B) and a bass staff with a half note chord (C, D, E, F). The second measure shows a treble staff with a half note chord (F#, G, A, B) and a bass staff with a half note chord (C, D, E, F). The third measure shows a treble staff with a half note chord (F#, G, A, B) and a bass staff with a half note chord (C, D, E, F). The fourth measure shows a treble staff with a half note chord (F#, G, A, B) and a bass staff with a half note chord (C, D, E, F).

Handwritten musical notation for the second system. It consists of two staves: a treble clef staff on top and a bass clef staff on the bottom. The key signature is one sharp (F#), and the time signature is common time (C). The first measure shows a treble staff with a half note chord (F#, G, A, B) and a bass staff with a half note chord (C, D, E, F). The second measure shows a treble staff with a half note chord (F#, G, A, B) and a bass staff with a half note chord (C, D, E, F). The third measure shows a treble staff with a half note chord (F#, G, A, B) and a bass staff with a half note chord (C, D, E, F). The fourth measure shows a treble staff with a half note chord (F#, G, A, B) and a bass staff with a half note chord (C, D, E, F).

Handwritten musical notation for the third system. It consists of two staves: a treble clef staff on top and a bass clef staff on the bottom. The key signature is one sharp (F#), and the time signature is common time (C). The first measure shows a treble staff with a half note chord (F#, G, A, B) and a bass staff with a half note chord (C, D, E, F). The second measure shows a treble staff with a half note chord (F#, G, A, B) and a bass staff with a half note chord (C, D, E, F). The third measure shows a treble staff with a half note chord (F#, G, A, B) and a bass staff with a half note chord (C, D, E, F). The fourth measure shows a treble staff with a half note chord (F#, G, A, B) and a bass staff with a half note chord (C, D, E, F).

*Adagio* (♩)

Handwritten musical score for the first system. It consists of three staves. The top staff is in treble clef, the middle in alto clef, and the bottom in bass clef. The music is in 3/4 time, indicated by a '3' and a quarter note. The key signature has two flats (B-flat and E-flat). The first measure contains a quarter note B-flat, a quarter note G, and a quarter note F. The second measure contains a quarter note E-flat, a quarter note D, and a quarter note C. The third measure contains a quarter note B-flat, a quarter note A, and a quarter note G. The fourth measure contains a quarter note F, a quarter note E, and a quarter note D. The piece ends with a double bar line.

Handwritten musical score for the second system. It consists of three staves. The top staff is in treble clef, the middle in alto clef, and the bottom in bass clef. The music is in 3/4 time, indicated by a '3' and a quarter note. The key signature has two flats (B-flat and E-flat). The first measure contains a quarter note B-flat, a quarter note G, and a quarter note F. The second measure contains a quarter note E-flat, a quarter note D, and a quarter note C. The third measure contains a quarter note B-flat, a quarter note A, and a quarter note G. The fourth measure contains a quarter note F, a quarter note E, and a quarter note D. The piece ends with a double bar line.

sehr ruhige (Schlssel)

zart

Handwritten musical score for the first system. It consists of three staves. The top staff is in treble clef and contains two measures of music with notes and accidentals, including a circled 'pp' dynamic marking. The middle staff is in bass clef and contains two measures of music with notes and accidentals. The bottom staff is a single-line staff with notes and accidentals. The word 'zart' is written above the first measure.

Handwritten musical score for the second system. It consists of three staves. The top staff is in treble clef and contains two measures of music with notes and accidentals. The middle staff is in bass clef and contains two measures of music with notes and accidentals. The bottom staff is a single-line staff with notes and accidentals.

Handwritten musical score for the third system. It consists of three staves. The top staff is in treble clef and contains two measures of music with notes and accidentals. The middle staff is in bass clef and contains two measures of music with notes and accidentals. The bottom staff is a single-line staff with notes and accidentals.

Handwritten musical notation for the first system. It consists of three staves. The top staff is in treble clef and contains several chords and melodic lines with fingerings (e.g., 4, 5, 7, 7). The middle staff is in bass clef and contains a melodic line with fingerings (e.g., 2, 2, 2, 2, 2, 2, 2, 2). The bottom staff is in bass clef and contains a single note with a fermata.

Handwritten musical notation for the second system. It consists of three staves. The top staff is in treble clef and contains several chords and melodic lines with fingerings (e.g., 4, 5, 7, 7, 7, 7, 7, 7). The middle staff is in bass clef and contains a melodic line with fingerings (e.g., 2, 2, 2, 2, 2, 2, 2, 2) and some accidentals (sharps). The bottom staff is in bass clef and contains a single note with a fermata.

Handwritten musical notation for the third system. It consists of three staves. The top staff is in treble clef and contains several chords and melodic lines with fingerings (e.g., 4, 5, 7, 7, 7, 7, 7, 7). The middle staff is in bass clef and contains a melodic line with fingerings (e.g., 2, 2, 2, 2, 2, 2, 2, 2) and some accidentals (flats). The bottom staff is in bass clef and contains a single note with a fermata.



Handwritten musical notation for the first system. The treble clef is on the top staff, and the piano part is on the bottom staff. The key signature has one sharp (F#). The time signature is 7/8. The melody consists of three measures: G4, A4, B4, C5, B4, A4, G4. The piano accompaniment uses chords with accidentals and is marked with '77'.

rit.

Handwritten musical notation for the second system. The treble clef is on the top staff, and the piano part is on the bottom staff. The melody continues with notes G4, F#4, E4, D4, C4. The piano accompaniment continues with chords and is marked with '77'.

Tempo (3/4)

Handwritten musical notation for the third system. The treble clef is on the top staff, and the piano part is on the bottom staff. The time signature is 3/4. The melody consists of two measures with notes G4, A4, B4, C5, B4, A4, G4. The piano accompaniment includes a bass clef and a '60' marking.

The image shows three systems of handwritten musical notation. Each system consists of a treble clef staff and a bass clef staff. The notation is written in black ink on a white background. The first system has two measures. The treble staff contains notes with stems and beams, some with accidentals (flats). The bass staff contains notes with stems and beams, some with accidentals. The second system also has two measures. The treble staff contains notes with stems and beams, some with accidentals. The bass staff contains notes with stems and beams, some with accidentals. The third system has two measures. The treble staff contains notes with stems and beams, some with accidentals. The bass staff contains notes with stems and beams, some with accidentals. The notation is somewhat sketchy and appears to be a student exercise or a composer's draft.

pff -----

MYSTERIOSO | Hologio (A)

ppp

Sempre cresc.

Handwritten musical notation for the first system. It features a treble clef and a circled **pp** dynamic marking. The notation includes notes with fingerings **4444** and **4444 b9**, and slurs. The right side shows two staves with notes and fingerings **4444** and **7777**. The bass line has a key signature of one sharp (F#).

Handwritten musical notation for the second system. It features a treble clef and a circled **p** dynamic marking. The notation includes notes with fingerings **4444 #9** and **4444 b9**, and slurs. The right side shows two staves with notes and fingerings **7777** and **7777**. The bass line has a key signature of one sharp (F#).

Handwritten musical notation for the third system. It features a treble clef and a circled **mf** dynamic marking. The notation includes notes with fingerings **4444 9** and **4444 b9**, and slurs. The right side shows two staves with notes and fingerings **4444** and **7777**. The bass line has a key signature of one sharp (F#).

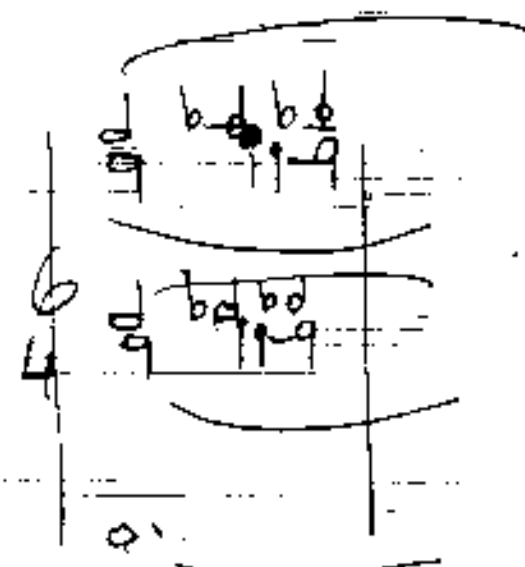
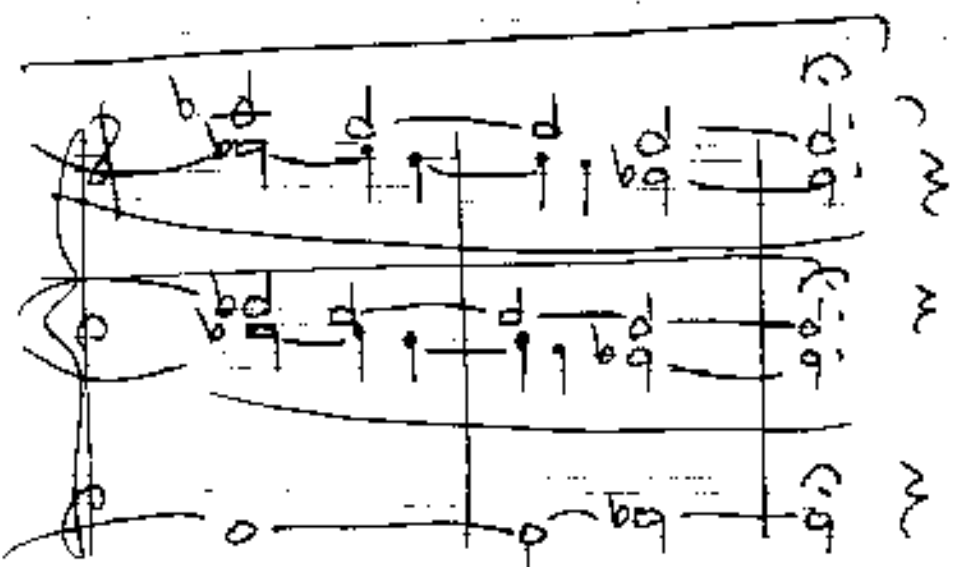
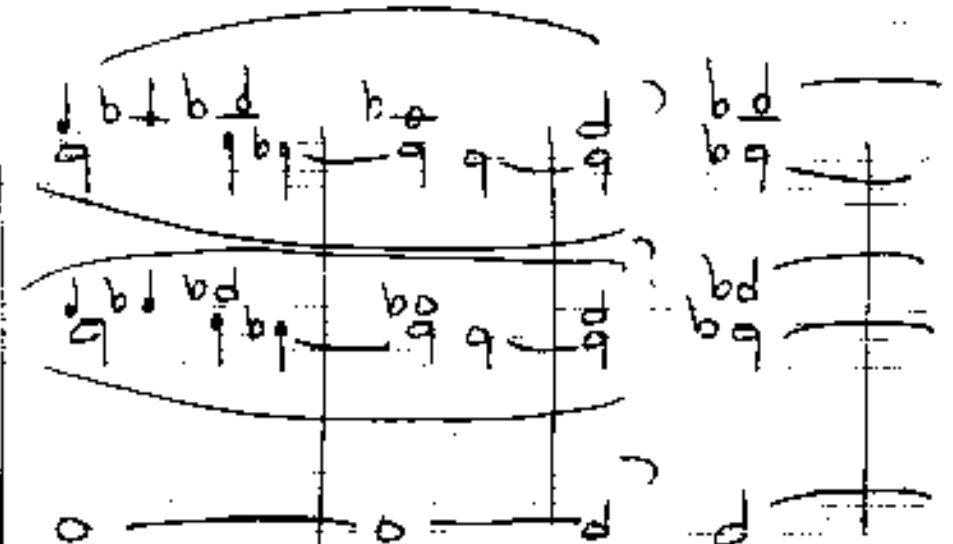
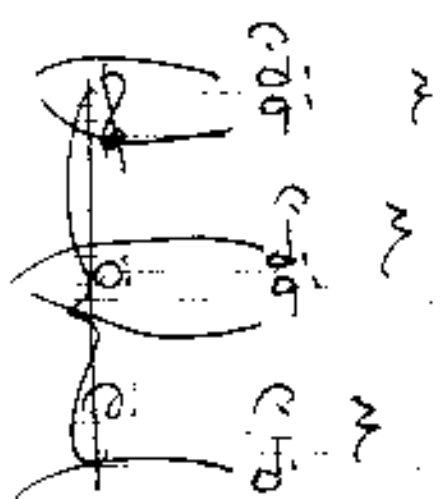
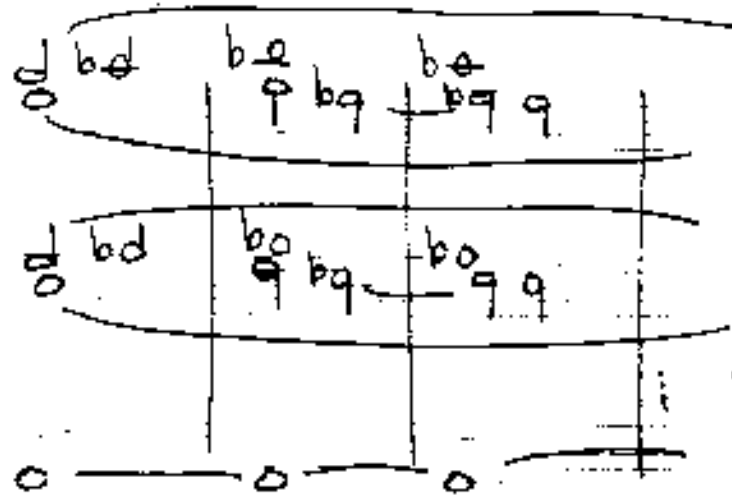
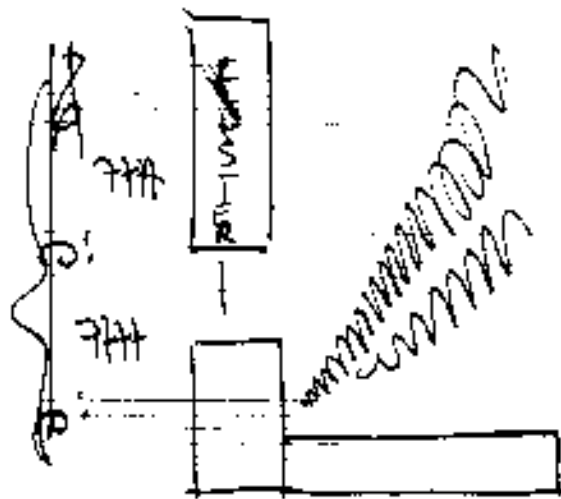
Handwritten musical notation for the first system. It consists of a treble clef staff with a circled 'f' dynamic marking, a bass clef staff with a key signature of one sharp (F#), and a piano part with a key signature of one sharp. The notation includes notes with stems and various accidentals, along with handwritten numbers '4444' and '7777' above the notes.

Handwritten musical notation for the second system. It consists of a treble clef staff with a circled 'f' dynamic marking, a bass clef staff with a key signature of one sharp (F#), and a piano part with a key signature of one sharp. The notation includes notes with stems and various accidentals, along with handwritten numbers '4444' and '7777' above the notes.

Handwritten musical notation for the third system. It consists of a treble clef staff with a circled 'f' dynamic marking, a bass clef staff with a key signature of one sharp (F#), and a piano part with a key signature of one sharp. The notation includes notes with stems and various accidentals, along with handwritten numbers '4444' and '7777' above the notes.

frei

breit (wie ein Choral)



Handwritten musical notation on three staves. The top staff contains a melodic line with notes and accidentals (flats and naturals). The middle and bottom staves contain accompaniment with chords and notes. A large bracket spans across all three staves. A '4' is written vertically between the middle and bottom staves.

Handwritten musical notation on three staves. The top staff has a melodic line with notes and accidentals. The middle staff has a melodic line with notes and accidentals. The bottom staff has a melodic line with notes and accidentals. A large bracket spans across all three staves.

Handwritten musical notation on three staves. The top staff has a melodic line with notes and accidentals, including the word "LONGA". The middle staff has a melodic line with notes and accidentals. The bottom staff has a melodic line with notes and accidentals. A large bracket spans across all three staves. A wavy line and the number "1969" are written in the bottom staff.