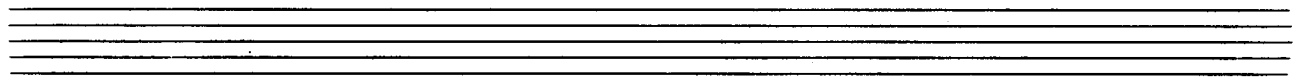


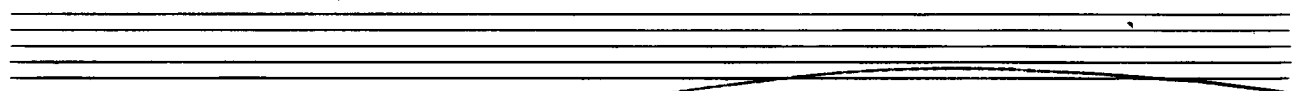
Fantasie für
große Orgel
1969

Adolf Klumbauer

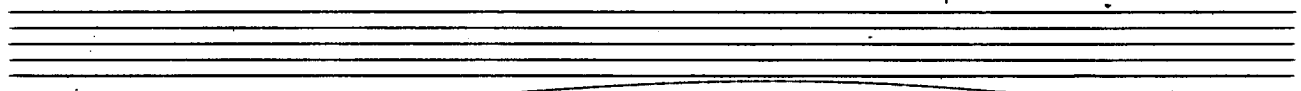
Notenheft



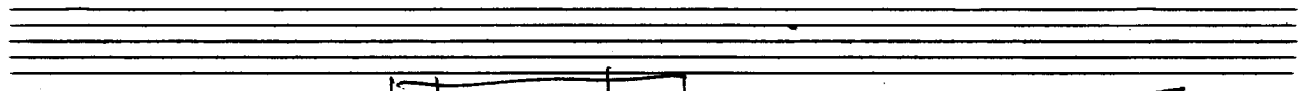
ento (auf Achtel) sehr ruhig flüßend



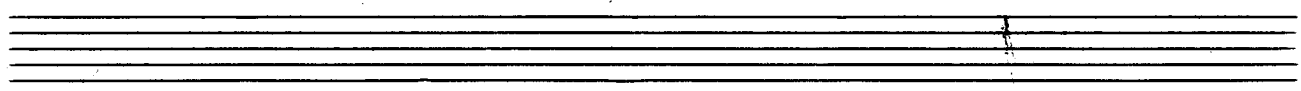
Handwritten musical notation for the first system. It consists of two staves. The upper staff is in treble clef with a key signature of one flat (B-flat). The lower staff is in bass clef. The music begins with a circled 'p' (piano) dynamic marking. The notation includes various note values, rests, and accidentals, with some notes beamed together.



Handwritten musical notation for the second system, continuing from the first. It features two staves with treble and bass clefs. The notation is dense with notes and rests, showing a continuation of the melodic and harmonic ideas from the first system.



Handwritten musical notation for the third system. It consists of two staves. The upper staff continues the melodic line with various intervals and accidentals. The lower staff provides harmonic support with sustained notes and some movement.

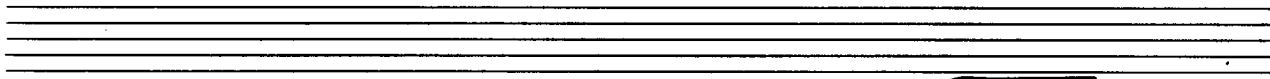
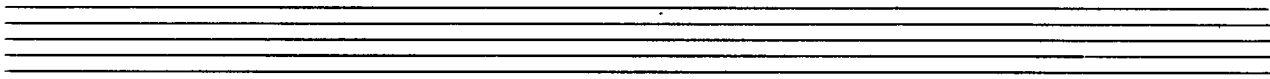


Handwritten musical notation for the first system. The treble staff contains a melodic line with notes, accidentals (flats and sharps), and a large slur. The bass staff contains a bass line with notes and accidentals. The system is enclosed in a large bracket.

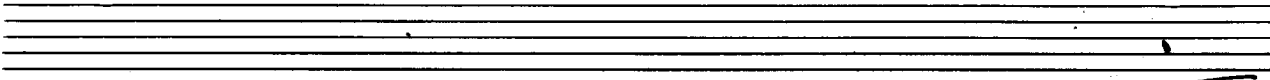
Handwritten musical notation for the second system. The treble staff contains a melodic line with notes, accidentals, and a large slur. The bass staff contains a bass line with notes and accidentals. The system is enclosed in a large bracket.

Handwritten musical notation for the third system. The treble staff contains a melodic line with notes, accidentals, and a large slur. The bass staff contains a bass line with notes and accidentals. The system is enclosed in a large bracket.

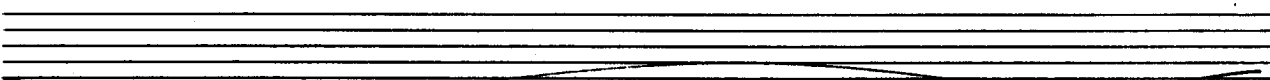
Four empty musical staves, each consisting of five horizontal lines.



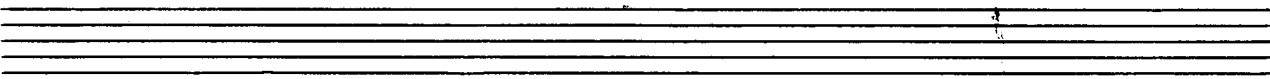
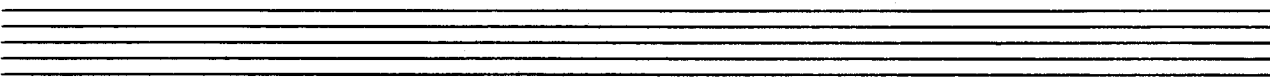
Handwritten musical notation for the first system. The treble clef staff contains a melodic line with notes including flats and sharps, and a long slur. The bass clef staff contains a bass line with notes and a dynamic marking of *p*. A second dynamic marking *p* is written below the bass line.



Handwritten musical notation for the second system. The treble clef staff continues the melodic line with notes and a slur. The bass clef staff continues the bass line with notes and a dynamic marking of *p*.



Handwritten musical notation for the third system. The treble clef staff continues the melodic line with notes and a slur. The bass clef staff continues the bass line with notes and a dynamic marking of *p*.



Handwritten musical notation for the first system. The treble staff contains a melodic line with notes and rests, including accidentals (flats and sharps). The bass staff contains a bass line with notes and rests, including accidentals (sharps and flats). The system is divided into two measures by a vertical bar line.

Handwritten musical notation for the second system. The treble staff contains a melodic line with notes and rests, including accidentals (sharps and flats). The bass staff contains a bass line with notes and rests, including accidentals (flats and sharps). The system is divided into two measures by a vertical bar line.

Handwritten musical notation for the third system. The treble staff contains a melodic line with notes and rests, including accidentals (sharps and flats). The bass staff contains a bass line with notes and rests, including accidentals (flats and sharps). The system is divided into two measures by a vertical bar line.

Two empty musical staves at the bottom of the page, consisting of five lines each.

Handwritten musical notation for the first system. The system consists of two staves. The upper staff is in treble clef and contains a melodic line with several notes, including a sharp sign (#) and a flat sign (b). The lower staff is in bass clef and contains a bass line with notes and a flat sign (b). There are various musical markings such as slurs and ties across both staves.

Handwritten musical notation for the second system. The system consists of two staves. The upper staff is in treble clef and contains a melodic line with several notes, including a sharp sign (#) and a flat sign (b). The lower staff is in bass clef and contains a bass line with notes and a sharp sign (#). There are various musical markings such as slurs and ties across both staves.

Handwritten musical notation for the third system. The system consists of two staves. The upper staff is in treble clef and contains a melodic line with several notes, including a sharp sign (#) and a flat sign (b). The lower staff is in bass clef and contains a bass line with notes and a flat sign (b). There are various musical markings such as slurs and ties across both staves.

Handwritten musical notation for the first system. It consists of two staves: a treble clef staff on top and a bass clef staff on the bottom. The treble staff contains several measures of music with notes, accidentals (sharps), and slurs. The bass staff contains notes and rests, with some handwritten markings like '2/3' and 'x'.

Handwritten musical notation for the second system. It consists of two staves: a treble clef staff on top and a bass clef staff on the bottom. The treble staff contains several measures of music with notes, accidentals (sharps), and slurs. The bass staff contains notes and rests, with some handwritten markings like 'x' and '2/3'.

Handwritten musical notation for the third system. It consists of two staves: a treble clef staff on top and a bass clef staff on the bottom. The treble staff contains several measures of music with notes, accidentals (sharps and flats), and slurs. The bass staff contains notes and rests, with some handwritten markings like '2/3' and 'p'.

Handwritten musical notation for the fourth system. It consists of two staves: a treble clef staff on top and a bass clef staff on the bottom. The treble staff contains several measures of music with notes, accidentals (sharps and flats), and slurs. The bass staff contains notes and rests, with some handwritten markings like 'p'.

accel.....

Handwritten musical notation for the first system. The treble clef staff contains a melodic line with a sharp sign (F#) and a slur. The bass clef staff contains a bass line with a slur and a dynamic marking 'p'. The system is divided into three measures.

Handwritten musical notation for the second system. The treble clef staff continues the melodic line with a slur and a dynamic marking 'p'. The bass clef staff continues the bass line with a slur and a dynamic marking 'p'. The system is divided into three measures.

Handwritten musical notation for the third system. The treble clef staff contains a melodic line with a slur and a dynamic marking 'p'. The bass clef staff contains a bass line with a slur and a dynamic marking 'p'. The system is divided into four measures, ending with a double bar line. A 'rit.....' marking is written above the second measure.

Handwritten musical notation for the first system, featuring a treble and bass clef with a key signature of one sharp (F#) and a 2/8 time signature. The notation includes various rhythmic values and accidentals.

Handwritten musical notation for the second system, continuing the piece with similar rhythmic and melodic patterns.

Handwritten musical notation for the third system, which includes a section with a slanted staff and the instruction *energico* written below the notes.

Two empty musical staves at the bottom of the page, likely for additional notation or as a placeholder.

Handwritten musical score for the first system. It features a grand staff with three staves. The top staff is in treble clef with a key signature of two flats (B-flat and E-flat). The middle and bottom staves are in bass clef. The music begins with a few notes in the top staff, followed by a vertical bar line. After the bar line, there are dense, rapid sixteenth-note passages in both the top and middle staves, connected by a long, sweeping slur that spans across the system. Below the staves, there are two fermatas and a long horizontal line.

Handwritten musical score for the second system. It features a grand staff with three staves. The top staff is in treble clef with a key signature of two flats. The middle and bottom staves are in bass clef. The music begins with a few notes in the top staff, followed by a vertical bar line. After the bar line, there are dense, rapid sixteenth-note passages in both the top and middle staves, connected by a long, sweeping slur that spans across the system. Below the staves, there are two fermatas and a long horizontal line.

Handwritten musical score for the third system. It features a grand staff with three staves. The top staff is in treble clef with a key signature of two flats. The middle and bottom staves are in bass clef. The music begins with a few notes in the top staff, followed by a vertical bar line. After the bar line, there are dense, rapid sixteenth-note passages in both the top and middle staves, connected by a long, sweeping slur that spans across the system. Below the staves, there are two fermatas and a long horizontal line.

Handwritten musical score for the first system. It consists of three staves. The top staff is a treble clef with a key signature of one sharp (F#) and a common time signature (C). The middle staff is a bass clef with a key signature of one sharp (F#) and a common time signature (C). The bottom staff is a bass clef with a common time signature (C). The music features a melodic line in the treble clef and a bass line in the bass clef. A large slur covers the entire system, with a fermata-like symbol at the end. The notation is handwritten and includes various musical symbols such as notes, rests, and clefs.

Handwritten musical score for the second system. It consists of three staves. The top staff is a treble clef with a key signature of one sharp (F#) and a common time signature (C). The middle staff is a bass clef with a key signature of one sharp (F#) and a common time signature (C). The bottom staff is a bass clef with a common time signature (C). The music features a melodic line in the treble clef and a bass line in the bass clef. A large slur covers the entire system, with a fermata-like symbol at the end. The notation is handwritten and includes various musical symbols such as notes, rests, and clefs.

Handwritten musical score for the third system. It consists of three staves. The top staff is a treble clef with a key signature of one sharp (F#) and a common time signature (C). The middle staff is a bass clef with a key signature of one sharp (F#) and a common time signature (C). The bottom staff is a bass clef with a common time signature (C). The music features a melodic line in the treble clef and a bass line in the bass clef. A large slur covers the entire system, with a fermata-like symbol at the end. The notation is handwritten and includes various musical symbols such as notes, rests, and clefs.

Handwritten musical score for the first system. It features three staves: a top staff with a treble clef and a key signature of one sharp (F#), and two lower staves with a grand staff (treble and bass clefs). The music begins with a whole note chord in the top staff and a half note chord in the bass staff. A large slur covers the right-hand part of the system, which contains a rapid sixteenth-note scale. A fermata is placed over the final note of this scale.

Handwritten musical score for the second system. It features three staves: a top staff with a treble clef and a key signature of one sharp (F#), and two lower staves with a grand staff (treble and bass clefs). The music begins with a whole note chord in the top staff and a half note chord in the bass staff. A large slur covers the right-hand part of the system, which contains a rapid sixteenth-note scale. A fermata is placed over the final note of this scale.

Handwritten musical score for the third system. It features three staves: a top staff with a treble clef and a key signature of one sharp (F#), and two lower staves with a grand staff (treble and bass clefs). The music begins with a whole note chord in the top staff and a half note chord in the bass staff. A large slur covers the right-hand part of the system, which contains a rapid sixteenth-note scale. A fermata is placed over the final note of this scale.

Handwritten musical notation for the first system. The treble staff begins with a treble clef and a 6/8 time signature. The bass staff begins with a bass clef and a 3/4 time signature. The system contains three measures of music with various notes, rests, and accidentals.

Handwritten musical notation for the second system. The treble staff begins with a treble clef and a 3/4 time signature. The bass staff begins with a bass clef and a 3/4 time signature. The system contains three measures of music with various notes, rests, and accidentals.

Handwritten musical notation for the third system. The treble staff begins with a treble clef and a 3/4 time signature. The bass staff begins with a bass clef and a 3/4 time signature. The system contains three measures of music with various notes, rests, and accidentals.

Handwritten musical notation for the fourth system. The treble staff begins with a treble clef and a 3/4 time signature. The bass staff begins with a bass clef and a 3/4 time signature. The system contains three measures of music with various notes, rests, and accidentals.

Handwritten musical notation for the first system. It consists of two staves. The upper staff is in treble clef and contains a melodic line with notes G4, A4, B4, C5, B4, A4, G4, and a final G4. The lower staff is in bass clef and contains a bass line with notes B2, C3, D3, E3, F3, G3, and a final G3. There are various slurs and phrasing marks throughout the system.

Handwritten musical notation for the second system. The upper staff continues the melodic line with notes G4, A4, B4, C5, B4, A4, G4, and a final G4. The lower staff continues the bass line with notes B2, C3, D3, E3, F3, G3, and a final G3. There are various slurs and phrasing marks throughout the system.

Handwritten musical notation for the third system. The upper staff continues the melodic line with notes G4, A4, B4, C5, B4, A4, G4, and a final G4. The lower staff continues the bass line with notes B2, C3, D3, E3, F3, G3, and a final G3. There are various slurs and phrasing marks throughout the system. The word "rit." is written below the first measure of the lower staff, followed by a dashed line.

color concept (raschi)

Handwritten musical notation for the first system. It consists of a grand staff with treble and bass clefs. The time signature is 2/4. The music is marked with a forte dynamic (*ff*) and a piano dynamic (*f*). The notation includes eighth and sixteenth notes, some beamed together, and rests. There are three measures of music, each with a slur over the notes. Below the staff, there are three measures of rests, each marked with a fermata-like symbol.

Handwritten musical notation for the second system. It consists of a grand staff with treble and bass clefs. The notation includes eighth and sixteenth notes, some beamed together, and rests. There are three measures of music, each with a slur over the notes. Below the staff, there are three measures of rests, each marked with a fermata-like symbol. The notation includes various accidentals, including flats and sharps.

Handwritten musical notation for the third system. It consists of a grand staff with treble and bass clefs. The notation includes eighth and sixteenth notes, some beamed together, and rests. There are three measures of music, each with a slur over the notes. Below the staff, there are three measures of rests, each marked with a fermata-like symbol. The notation includes various accidentals, including sharps and flats.

Handwritten musical score for the first system. It features a grand staff with treble and bass clefs. The key signature is one sharp (F#). The time signature is 4/4. The music consists of three measures with various note values and rests.

Handwritten musical score for the second system. It continues the piece with a grand staff and a key signature of one sharp. The notation includes complex rhythmic patterns and rests.

Handwritten musical score for the third system. It concludes the piece with a grand staff and a key signature of one sharp. The notation includes complex rhythmic patterns and rests.

brevi $\frac{4}{4}$

Handwritten musical score for the first system, featuring a treble clef, a 4/4 time signature, and a bass clef. The music consists of several chords and notes, with some accidentals and a circled '4' in the treble staff.

Handwritten musical score for the second system, featuring a treble clef, a 4/4 time signature, and a bass clef. The music is heavily obscured by large, sweeping lines that cross the staves, suggesting a deletion or a very broad melodic line.

nach vorbereiten →

Handwritten musical score for the third system, featuring a treble clef, a 4/4 time signature, and a bass clef. The music consists of several chords and notes, with some accidentals and a circled '4' in the treble staff.

(wie ein Choral) so breit als möglich

Handwritten musical notation for the first system. The top staff is in treble clef and contains a melodic line with several triplet markings (indicated by a '3' in a bracket). The bottom two staves are in bass clef and contain accompaniment, including a large number '4' and various chordal structures.

Handwritten musical notation for the second system. The top staff continues the melodic line with more triplet markings. The bottom two staves continue the accompaniment with similar chordal patterns.

Handwritten musical notation for the third system. The top staff concludes the melodic line with final triplet markings. The bottom two staves conclude the accompaniment with final chordal structures.

großes mit .

Handwritten musical score for the first system. The treble clef staff contains four groups of triplets, each marked with a '3' above a bracket. The notes are G4, A4, B4, C5, D5, E5, F5, G5. The bass clef staff has a 3/4 time signature and contains a single note G3. The key signature has one sharp (F#).

Handwritten musical score for the second system. The treble clef staff contains a series of notes: G4, A4, B4, C5, D5, E5, F5, G5, with a '3' written below the first three notes. The bass clef staff contains a series of notes: G3, A3, B3, C4, D4, E4, F4, G4. The key signature has one sharp (F#).

Handwritten musical score for the third system. The treble clef staff contains a series of notes: G4, A4, B4, C5, D5, E5, F5, G5, with a '3' written below the first three notes. The bass clef staff contains a series of notes: G3, A3, B3, C4, D4, E4, F4, G4. The key signature has one sharp (F#).