

Band ①

Notenheft

vorl. No. 1297

14 Teile für
Klavier (oder Cembalo)
oder Orgel.

1969

Adolf Scherbaum

(A)

breit

Handwritten musical notation for the first system. The treble clef staff contains a melodic line with notes and slurs, marked with accents (^) and a dynamic marking of *mf*. The bass clef staff contains a bass line with notes and slurs, also marked with accents (^). The system concludes with a double bar line and a circled cross symbol.

Handwritten musical notation for the second system. The treble clef staff features a melodic line with slurs and a dynamic marking of *p*. The bass clef staff contains complex chordal structures with slurs and a dynamic marking of *p*. The system ends with a double bar line.

Handwritten musical notation for the third system. The treble clef staff has a melodic line with slurs and a dynamic marking of *mf*. The bass clef staff contains chordal textures with slurs and a dynamic marking of *f*. The system ends with a double bar line.

Handwritten musical notation for the fourth system. The treble clef staff has a melodic line with slurs and a dynamic marking of *ff*. The bass clef staff contains chordal textures with slurs and a dynamic marking of *ff*. The system ends with a double bar line and a circled cross symbol.

Presto (1+p) 2+p 3+pp 4+H)

(sempre legato)

Handwritten musical notation for the first system. It consists of two staves: a treble clef staff and a bass clef staff. The treble staff begins with a circled 'P' and a '4' below it. The music features a series of notes with slurs and accents, including a sharp sign (#) and a flat sign (b). The bass staff contains rhythmic patterns with slurs and accents.

Handwritten musical notation for the second system. It consists of two staves: a treble clef staff and a bass clef staff. The treble staff continues the melodic line with slurs and accents, including a sharp sign (#) and a flat sign (b). The bass staff continues the rhythmic accompaniment with slurs and accents.

Handwritten musical notation for the third system. It consists of two staves: a treble clef staff and a bass clef staff. The treble staff continues the melodic line with slurs and accents, including a flat sign (b). The bass staff continues the rhythmic accompaniment with slurs and accents.

Handwritten musical notation for the fourth system. It consists of two staves: a treble clef staff and a bass clef staff. The treble staff continues the melodic line with slurs and accents, including a sharp sign (#). The bass staff continues the rhythmic accompaniment with slurs and accents.

Handwritten musical notation for the first system. It consists of two staves: a treble clef staff on top and a bass clef staff on the bottom. The treble staff contains several notes with sharp accidentals (#) and a slur. The bass staff contains notes with sharp accidentals and a slur. A large, thin, curved line arches over the entire system.

Handwritten musical notation for the second system. It consists of two staves: a treble clef staff on top and a bass clef staff on the bottom. The treble staff contains notes with flat accidentals (b) and a slur. The bass staff contains notes with flat accidentals and a slur. A large, thin, curved line arches over the entire system.

Handwritten musical notation for the third system. It consists of two staves: a treble clef staff on top and a bass clef staff on the bottom. The treble staff contains notes with flat accidentals (b) and a slur. The bass staff contains notes with flat accidentals and a slur. A large, thin, curved line arches over the entire system.

G.P. , D.C. ad ϕ

Handwritten musical notation on a grand staff. The top staff is labeled "Lento" with a hairpin. The middle two staves are labeled "lunga" with a hairpin. The notation includes chords, melodic lines, and dynamic markings like "mf" and "f".

A series of ten empty musical staves for writing.

(B)

Lento

Handwritten musical notation for the first system, measures 1-4. The right hand starts with a 4/8 time signature and a piano (pp) dynamic. The left hand has a 2/8 time signature. The music features chords and melodic lines with various accidentals.

Handwritten musical notation for the second system, measures 5-8. The right hand continues with chords and melodic lines. The left hand has chords with a 4/4 time signature indicated.

Handwritten musical notation for the third system, measures 9-12. The right hand has a forte (f) dynamic. The left hand has chords with a 4/4 time signature indicated.

Handwritten musical notation for the fourth system, measures 13-16. The right hand has a piano (p) dynamic. The left hand has chords with a 4/4 time signature indicated.

pesante (breit)

Handwritten musical notation for the first system. The treble clef staff contains a series of chords and notes, including a sharp sign and a hat accent (^). The bass clef staff contains a complex rhythmic pattern with many notes and accidentals, including a sharp sign and a hat accent (^).

Handwritten musical notation for the second system. The treble clef staff contains a series of chords and notes, including a flat sign and a hat accent (^). The bass clef staff contains a complex rhythmic pattern with many notes and accidentals, including a sharp sign and a hat accent (^).

Handwritten musical notation for the third system. The treble clef staff contains a series of chords and notes, including a hat accent (^) and the instruction "poco rit". The bass clef staff contains a complex rhythmic pattern with many notes and accidentals, including a sharp sign and a hat accent (^).

Handwritten musical notation for the fourth system. The treble clef staff contains a series of chords and notes, including a circled "quit" and a "FINE" sign. The bass clef staff contains a complex rhythmic pattern with many notes and accidentals, including a sharp sign and a hat accent (^).

sehr breit (etwas bewegt)

Handwritten musical notation for the first system. The treble clef staff contains two measures of music. The first measure has a circled 'ff' dynamic marking. The second measure has a circled 'G' marking. The bass clef staff contains two measures of music. The first measure has a circled 'G' marking. The second measure has a circled 'b' marking. There are various accents and slurs above the notes.

Handwritten musical notation for the second system. The treble clef staff contains two measures of music. The first measure has a circled 'G' marking. The second measure has a circled 'G' marking. The bass clef staff contains two measures of music. The first measure has a circled 'b' marking. The second measure has a circled 'b' marking. There are various accents and slurs above the notes.

Handwritten musical notation for the third system. The treble clef staff contains two measures of music. The first measure has a circled 'b' marking. The second measure has a circled 'b' marking. The bass clef staff contains two measures of music. The first measure has a circled 'G' marking. The second measure has a circled 'G' marking. There are various accents and slurs above the notes.

Handwritten musical notation for the first system. The treble clef staff contains notes with accidentals (flats and naturals) and accents (^). The bass clef staff contains notes with accidentals. A bracket spans across both staves in the second measure, with the word "din" and an accent (>) written above it.

Handwritten musical notation for the second system. The treble clef staff starts with a circled 'P' and a '2' above it. It contains notes with accidentals and slurs. The bass clef staff contains notes with accidentals and slurs.

Handwritten musical notation for the third system. The treble clef staff contains notes with accidentals and dynamic markings 'f' and 'ff'. The bass clef staff contains notes with accidentals and dynamic markings 'f' and 'ff'.

Handwritten musical notation for the fourth system. The treble clef staff ends with a double bar line and a circled 'ff'. The bass clef staff contains notes with accidentals and dynamic markings 'ff'. A wavy line is drawn above the treble staff. The system concludes with a double bar line.

Allegretto



Handwritten musical notation for the first system, featuring treble and bass staves with notes, rests, and dynamic markings like *pp*.

Handwritten musical notation for the second system, featuring treble and bass staves with notes, rests, and dynamic markings like *f*.

Handwritten musical notation for the third system, featuring treble and bass staves with notes, rests, and dynamic markings like *mf* and *f*.

Handwritten musical notation for the fourth system, featuring treble and bass staves with notes, rests, and dynamic markings like *mf* and *f*.

Handwritten musical notation for the first system. The treble clef staff contains a melodic line with notes, rests, and slurs. A dynamic marking 'pp' is present. The bass clef staff contains a bass line with notes and slurs. A dynamic marking 'f' is written above the first measure.

Handwritten musical notation for the second system. The treble clef staff continues the melodic line with notes, rests, and slurs. A dynamic marking 'f' is present. The bass clef staff contains a bass line with notes and slurs. A dynamic marking 'p' is circled at the end of the system.

Handwritten musical notation for the third system. The treble clef staff contains notes, rests, and slurs. A dynamic marking 'p' is present. The bass clef staff contains notes and slurs.

Handwritten musical notation for the fourth system. The treble clef staff contains notes, rests, and slurs. A dynamic marking 'f' is present. The bass clef staff contains notes and slurs.

(poco rit)

Handwritten musical notation for the first system, featuring a treble and bass clef. The music includes various notes, rests, and dynamic markings such as *p* and *pp*. The tempo marking *(poco rit)* is written above the staff.

breve (4/8)

Handwritten musical notation for the second system, including a treble and bass clef. The music includes notes, rests, and a dynamic marking of *fpp*. The tempo marking *breve (4/8)* is written above the staff.

(poco rit)

Handwritten musical notation for the third system, featuring a treble and bass clef. The music includes notes, rests, and dynamic markings. The tempo marking *(poco rit)* is written above the staff.

Presto

Handwritten musical notation for the fourth system, including a treble and bass clef. The music includes notes, rests, and a dynamic marking of *p*. The tempo marking *Presto* is written above the staff.

Handwritten musical notation for the first system. The treble clef staff contains a melodic line with eighth and sixteenth notes, some beamed together. The bass clef staff contains a bass line with a long note and a shorter note. Dynamic markings include 'f' and 'ff'. There are also some handwritten annotations above the staff, possibly indicating fingerings or articulation.

Handwritten musical notation for the second system. The treble clef staff continues the melodic line with similar rhythmic patterns. The bass clef staff continues the bass line. Dynamic markings include 'f' and 'ff'. There are also some handwritten annotations above the staff.

Handwritten musical notation for the third system. The treble clef staff ends with a double bar line. The bass clef staff also ends with a double bar line. Dynamic markings include 'ff'. There are also some handwritten annotations above the staff, including a circled 'P' and the initials 'G.P.'.

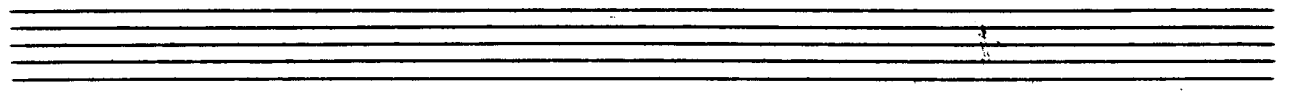
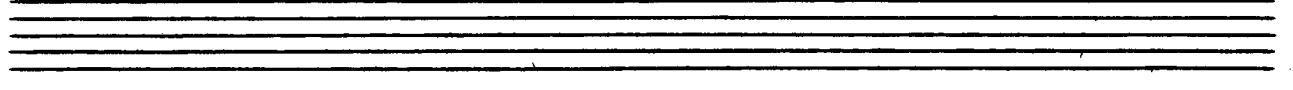
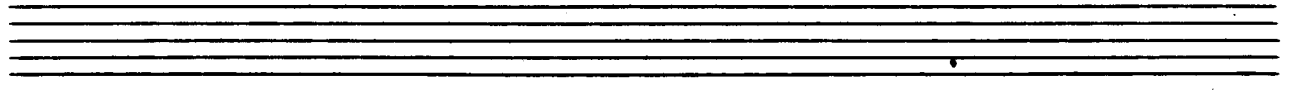
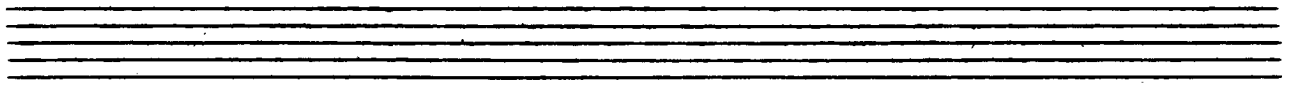
Handwritten musical notation for the first system. It consists of two staves. The top staff is in treble clef and the bottom in bass clef. The time signature is 4/4. The first measure contains a quarter note G4, a quarter note A4, a quarter note B4, and a quarter note C5, all beamed together with an accent (^) over the B4. The second measure contains a quarter note B4, a quarter note A4, a quarter note G4, and a quarter note F4, all beamed together with an accent (^) over the B4. The third measure contains a quarter note E4, a quarter note D4, and a quarter note C4, all beamed together with an accent (^) over the E4. The fourth measure contains a quarter note B3, a quarter note A3, and a quarter note G3, all beamed together with an accent (^) over the B3. The dynamic marking 'pp' is written above the first measure.

Handwritten musical notation for the second system. It consists of two staves. The top staff is in treble clef and the bottom in bass clef. The time signature is 4/4. The first measure contains a quarter note G4, a quarter note A4, a quarter note B4, and a quarter note C5, all beamed together with an accent (^) over the B4. The second measure contains a quarter rest, a quarter note B4, a quarter note A4, and a quarter note G4, all beamed together with an accent (^) over the B4. The third measure contains a quarter note F4, a quarter note E4, and a quarter note D4, all beamed together with an accent (^) over the F4. The fourth measure contains a quarter note C4, a quarter note B3, and a quarter note A3, all beamed together with an accent (^) over the C4. There are also some handwritten notes and symbols above the staves, including a 'b' and a 'u' with a circle below it.

Handwritten musical notation for the third system. It consists of two staves. The top staff is in treble clef and the bottom in bass clef. The time signature is 4/4. The first measure contains a quarter note G4, a quarter note A4, a quarter note B4, and a quarter note C5, all beamed together with an accent (^) over the B4. The second measure contains a quarter note B4, a quarter note A4, a quarter note G4, and a quarter note F4, all beamed together with an accent (^) over the B4. The third measure contains a quarter note E4, a quarter note D4, and a quarter note C4, all beamed together with an accent (^) over the E4. The fourth measure contains a quarter note B3, a quarter note A3, and a quarter note G3, all beamed together with an accent (^) over the B3. There is a double bar line after the second measure. The dynamic marking 'ppp' is written above the third measure.



oder ruhig



Handwritten musical notation for the first system. The top staff is in treble clef with a key signature of one sharp (F#). It begins with a fortissimo (**ff**) dynamic marking. The bottom staff is in bass clef and contains complex chordal textures with various accidentals, including a flat with a circumflex (**b¹**).

Handwritten musical notation for the second system. The top staff starts with a flat key signature (Bb) and contains notes with stems. The bottom staff features a piano (**p**) dynamic marking and a section marked **(2. poco rit)**. The system concludes with a section marked **(2. al D.C.)** and a final chord.

Handwritten musical notation for the third system. The top staff begins with a piano (**p**) dynamic marking. The bottom staff contains notes with stems and a section marked **> p/b**. The system ends with a final chord.



breve (*appassionata*)

(roco rit)

Tempo ①

Presto

Handwritten musical notation for the first system. It consists of two staves: a treble clef staff and a bass clef staff. The treble staff begins with a circled 'p' (piano) dynamic marking. The music features a melodic line in the treble and a more rhythmic accompaniment in the bass. A long slur spans across both staves, indicating a single phrase. The notation includes various note values, rests, and accidentals.

Handwritten musical notation for the second system, continuing the piece. It features two staves with treble and bass clefs. The notation includes notes, rests, and accidentals, with a long slur spanning across both staves. The piece continues with a similar melodic and rhythmic structure.

Handwritten musical notation for the third system, continuing the piece. It features two staves with treble and bass clefs. The notation includes notes, rests, and accidentals, with a long slur spanning across both staves. The piece continues with a similar melodic and rhythmic structure.

Handwritten musical notation for the first system. The treble clef staff contains a melodic line with a key signature of one sharp (F#) and a common time signature. The bass clef staff contains accompaniment with a 4/4 time signature and a circled 'p' dynamic marking.

Handwritten musical notation for the second system. The treble clef staff contains a melodic line with a key signature of one sharp (F#) and a common time signature. The bass clef staff contains accompaniment with a 4/4 time signature, the handwritten text "sempre din", and a circled 'p' dynamic marking.

Handwritten musical notation for the third system. The treble clef staff contains a melodic line with a key signature of one sharp (F#) and a common time signature. The bass clef staff contains accompaniment with a 4/4 time signature, a circled 'p' dynamic marking, and a circled 'f' dynamic marking at the end.

Handwritten musical notation for the fourth system. The treble clef staff contains a melodic line with a key signature of one sharp (F#) and a common time signature. The bass clef staff contains accompaniment with a 4/4 time signature, a circled 'p' dynamic marking, and a circled 'f' dynamic marking at the end. The system begins with the word "Lento" and a tempo marking of 20.

(F)

Leute

Handwritten musical notation for the first system, measures 1-2. The system consists of two staves. The upper staff is in treble clef with a key signature of one flat (B-flat). It contains a melodic line with a slur over measures 1 and 2, and accents (^) over the final two notes. The lower staff is in bass clef with a key signature of one flat, containing a bass line with a slur over measures 1 and 2. A dynamic marking of *pp* is present in measure 1.

Handwritten musical notation for the second system, measures 3-4. The system consists of two staves. The upper staff is in treble clef with a key signature of one flat, containing a melodic line with a slur over measures 3 and 4, and accents (^) over the final two notes. The lower staff is in bass clef with a key signature of one flat, containing a bass line with a slur over measures 3 and 4.

Handwritten musical notation for the third system, measures 5-6. The system consists of two staves. The upper staff is in treble clef with a key signature of one flat, containing a melodic line with a slur over measures 5 and 6, and accents (^) over the final two notes. The lower staff is in bass clef with a key signature of one flat, containing a bass line with a slur over measures 5 and 6.

Handwritten musical notation for the first system. The treble clef staff contains notes with accidentals (b, #) and slurs. The bass clef staff contains a series of chords, primarily triads, with a sharp sign at the beginning.

Handwritten musical notation for the second system. The treble clef staff shows notes with slurs and accidentals. The bass clef staff features a rhythmic accompaniment with eighth notes and chords.

Handwritten musical notation for the third system. The treble clef staff contains notes with slurs and accidentals. The bass clef staff has a chordal accompaniment with various intervals.

Handwritten musical notation for the fourth system. The treble clef staff shows notes with slurs and accidentals. The bass clef staff contains a chordal accompaniment with eighth notes.

er. mit)

lungen

ppp

G

breit (h.) appassionata

Handwritten musical notation for the first system, measures 1-2. The top staff shows a treble clef with a key signature of two sharps (F# and C#) and a common time signature. The first measure contains a half note G4 with a fermata, and the second measure contains a half note G4 with a fermata. The bottom staff shows a bass clef with a key signature of two sharps and a common time signature. The first measure contains a half note G3 with a fermata, and the second measure contains a half note G3 with a fermata. The notes are connected by a slur.

Handwritten musical notation for the second system, measures 3-4. The top staff shows a treble clef with a key signature of two sharps and a common time signature. The first measure contains a half note G4 with a fermata, and the second measure contains a half note G4 with a fermata. The bottom staff shows a bass clef with a key signature of two sharps and a common time signature. The first measure contains a half note G3 with a fermata, and the second measure contains a half note G3 with a fermata. The notes are connected by a slur.

Handwritten musical notation for the third system, measures 5-6. The top staff shows a treble clef with a key signature of two sharps and a common time signature. The first measure contains a half note G4 with a fermata, and the second measure contains a half note G4 with a fermata. The bottom staff shows a bass clef with a key signature of two sharps and a common time signature. The first measure contains a half note G3 with a fermata, and the second measure contains a half note G3 with a fermata. The notes are connected by a slur.

Handwritten musical notation for the first system. The treble clef staff contains two measures of chords, each marked with a fermata and a '3' below it. The bass clef staff contains two measures of complex, multi-note chords with various accidentals (sharps, flats, naturals).

Handwritten musical notation for the second system. Similar to the first system, it features two measures of chords in the treble clef with fermatas and '3' markings, and two measures of complex chords in the bass clef.

Handwritten musical notation for the third system. The treble clef staff shows two measures of chords with fermatas and '3' markings, followed by a final chord with a fermata. The bass clef staff contains two measures of complex chords and a final chord with a fermata.

Handwritten musical notation for the fourth system. The treble clef staff begins with a melodic line marked with a bracket and the dynamic marking $f + p (2 + ff)$. The bass clef staff contains two measures of chords with fermatas and a final chord with a fermata.

Handwritten musical notation for the first system, consisting of two staves. The upper staff contains a melodic line with eighth and sixteenth notes, and the lower staff contains a bass line with chords and a long note with a slur.

Handwritten musical notation for the second system, consisting of two staves. The upper staff continues the melodic line, and the lower staff features chords with accents and a long note with a slur.

Handwritten musical notation for the third system, consisting of two staves. The upper staff has a more rhythmic melodic line with slurs, and the lower staff has chords and a long note with a slur. The system ends with a double bar line and the word "Zit" written above.

Handwritten musical notation for the fourth system, consisting of two staves. The upper staff starts with a treble clef and the word "grit." above it. It contains a melodic line with various annotations like "b", "^", and "2". The lower staff has chords and a long note with a slur. The system ends with a double bar line and a large scribble.

1969

Band (2)

Notenheft

vorl. Nr. 1297

(A) 2

fließend (A) ruhig

Handwritten musical notation for the first system. The treble clef staff contains a melodic line with notes G4, A4, B4, C5, and D5, with accidentals (sharps and flats) and a slur. The bass clef staff contains a harmonic accompaniment with chords and eighth notes. A dynamic marking 'mp' is present.

Handwritten musical notation for the second system. The treble clef staff continues the melodic line with notes B4, A4, G4, F4, and E4, with accidentals and a slur. The bass clef staff continues the harmonic accompaniment.

Handwritten musical notation for the third system. The treble clef staff continues the melodic line with notes D4, C4, B3, and A3, with accidentals and a slur. The bass clef staff continues the harmonic accompaniment.

Handwritten musical notation for the fourth system. The treble clef staff concludes the melodic line with notes G3, F3, and E3, with accidentals and a slur. The bass clef staff concludes the harmonic accompaniment.

Handwritten musical notation for the first system. The notation is on a grand staff with treble and bass clefs. A circled 'rit' (ritardando) marking is placed above the right-hand staff. A 'pp' (pianissimo) dynamic marking is placed below the right-hand staff. The music consists of several measures with various note values and rests.

breit

Handwritten musical notation for the second system. The word 'breit' is written above the first measure. A circled 'fp' (fortissimo) marking is placed above the first measure. The notation continues with several measures of music.

Handwritten musical notation for the third system, showing a continuation of the piece with several measures of music.

Handwritten musical notation for the fourth system. A circled 'rit' (ritardando) marking is placed above the right-hand staff. The notation concludes with several measures of music.

Presto

pp

4

4

4

(2.)
D.C.
al
♩

Handwritten musical notation on a page of ten staves. The notation is concentrated on the first two staves. The first staff is labeled "Links" and contains a treble clef. The second staff contains a treble clef, a bass clef, and a key signature of one flat. The notation includes a series of four notes with the number "7444" written above them, a chord with a "+" sign, and a double bar line with a wavy line underneath. The remaining staves are empty.

B 2

Lento (percutite) brevit

Handwritten musical notation for the first system, measures 1-2. The right hand features chords with accents (^) and a fermata over the second measure. The left hand has a bass line with a fermata and a slur over the second measure.

Handwritten musical notation for the second system, measures 3-4. The right hand continues with chords and accents. The left hand has a bass line with a slur and a fermata over the fourth measure.

Handwritten musical notation for the third system, measures 5-6. The right hand has a circled 'rit' marking above the first measure and accents (^) over the first and third measures. The left hand has a fermata over the first measure and a slur over the second measure.

lento

Handwritten musical notation for the first system. The treble staff contains a series of chords, with a circled *pp* dynamic marking at the beginning. The bass staff contains corresponding chords. The notation is in a key with one sharp (F#).

Handwritten musical notation for the second system. The treble staff continues with chords, and a *p* dynamic marking is present. The bass staff shows chords with a key signature change to two sharps (F# and C#).

Handwritten musical notation for the third system. The treble staff features chords with a *f* dynamic marking. The bass staff contains chords with a key signature change to two flats (Bb and Eb).

Handwritten musical notation for the fourth system. The treble staff includes a *poco rit* marking and ends with a double bar line and a repeat sign. The bass staff contains chords with a key signature change to three flats (Bb, Eb, and Ab). The system concludes with the instruction *D.C. al*.

Handwritten musical notation on a grand staff. The top staff is marked with a treble clef and a common time signature (C). The word "corno" is written above the staff, and "quasi" is written below it. The music consists of several measures with notes and accidentals (flats and naturals). The bottom staff is marked with a bass clef and contains notes and rests. A dynamic marking "pp" is present in the first measure of the bottom staff.

Handwritten musical notation on a grand staff. The top staff is marked with a treble clef and contains notes with various accidentals (flats, naturals, sharps) and slurs. The bottom staff is marked with a bass clef and contains notes, rests, and a triplet of notes. There are also some handwritten markings like ">" and "<" below the bottom staff.

Five sets of empty grand staves, each consisting of a treble clef staff and a bass clef staff, arranged vertically.

C 2

Presto

Handwritten musical notation for the first system. The treble clef staff contains a 4/4 time signature and a series of notes with accidentals (flats and naturals) and accents. The bass clef staff contains notes with a circled 'pp' dynamic marking and various accidentals.

Handwritten musical notation for the second system. The treble clef staff features notes with a sharp sign and accents. The bass clef staff includes notes with a circled 'f' dynamic marking and various accidentals.

Handwritten musical notation for the third system. The treble clef staff contains notes with flats and naturals, some with accents. The bass clef staff includes notes with a circled 'p' dynamic marking and various accidentals.

Handwritten musical notation for the first system. The top staff is in treble clef and the bottom staff is in bass clef. The music consists of two measures. The first measure has a forte (f) dynamic marking and an accent (^) over a note. The second measure has an accent (^) over a note. The notation includes various accidentals (sharps and flats) and slurs.

Handwritten musical notation for the second system. The top staff is in treble clef and the bottom staff is in bass clef. The music consists of four measures. The notation is characterized by complex rhythmic patterns, slurs, and various accidentals.

Handwritten musical notation for the third system. The top staff is in treble clef and the bottom staff is in bass clef. The music consists of four measures. The first measure has a piano (p) dynamic marking. The notation includes slurs and various accidentals.

Handwritten musical notation for the fourth system. The top staff is in treble clef and the bottom staff is in bass clef. The music consists of four measures. The first measure has a piano (p) dynamic marking. The notation includes slurs and various accidentals.

Handwritten musical notation for the first system. The treble staff contains a melodic line with notes and accidentals (flats and naturals), including a first fingering (1) and a slur. The bass staff provides harmonic accompaniment with chords and single notes, marked with dynamics 'f' and 'p'.

Handwritten musical notation for the second system. The treble staff ends with a boxed 'FINE' marking. The bass staff includes a circled 'pp' dynamic marking and a 'rit.' (ritardando) marking above the staff. The system concludes with a double bar line.

Handwritten musical notation for the third system. The treble staff is marked 'breit' (broad) and contains wide intervals and slurs. The bass staff features a steady accompaniment with eighth notes and chords.

Handwritten musical notation for the fourth system. The treble staff has a '(poco rit)' (poco ritardando) marking above it. The system concludes with a double bar line.

Presto

Handwritten musical score for piano, consisting of four systems of staves. The first system is marked "Presto" and includes a circled "ff" dynamic marking. The score features complex rhythmic patterns with slurs and accents, and dynamic markings such as "p" and "ff". The final system concludes with the instruction "D.C. al Fine".

♭2

sehr ruhig

Handwritten musical notation for the first system. It features a treble clef, a key signature of one flat (B-flat), and a piano (p) dynamic marking. The notation includes chords and a melodic line with slurs and ties.

Handwritten musical notation for the second system. It features a treble clef, a key signature of one flat (B-flat), and a forte (f) dynamic marking. The notation includes chords and a melodic line with slurs and ties.

Handwritten musical notation for the third system. It features a treble clef, a key signature of one flat (B-flat), and a forte (f) dynamic marking. The notation includes chords and a melodic line with slurs and ties.

Handwritten musical notation for the first system. It consists of two staves. The upper staff is in treble clef and contains a sequence of notes with a sharp sign above the first measure. The lower staff is in bass clef and contains notes with various accidentals and a circled 'p' dynamic marking. There are also some handwritten annotations like 'f' and 'b' near the end of the system.

Handwritten musical notation for the second system. It consists of two staves. The upper staff continues the melodic line with notes and rests, including a circled 'p' dynamic marking. The lower staff has some notes and rests, with a few accidentals.

Two empty musical staves, one in treble clef and one in bass clef, positioned between the second and third systems.

Handwritten musical notation for the third system. It consists of two staves. The upper staff has notes with a circled 'p' dynamic marking. The lower staff has notes with various accidentals and a circled 'p' dynamic marking.

Two empty musical staves, one in treble clef and one in bass clef, positioned between the third and fourth systems.

Handwritten musical notation for the fourth system. It consists of two staves. The upper staff has notes with a circled 'p' dynamic marking. The lower staff has notes with various accidentals and a circled 'p' dynamic marking. There are also some handwritten annotations like 'f' and 'b' near the end of the system.

44

Personale

Handwritten musical notation for the first system. The treble clef staff contains a sequence of notes: G4, A4, B4, C5, B4, A4, G4. The bass clef staff contains notes: G3, A3, B3, C4, B3, A3, G3. There are various accidentals and dynamic markings, including a circled 'p' and a 'b' with an accent (^).

Handwritten musical notation for the second system. The treble clef staff contains notes: G4, A4, B4, C5, B4, A4, G4. The bass clef staff contains notes: G3, A3, B3, C4, B3, A3, G3. There are various accidentals and dynamic markings, including a circled 'rit', a 'p', and a 'dir' marking.

Handwritten musical notation for the third system. The treble clef staff contains notes: G4, A4, B4, C5, B4, A4, G4. The bass clef staff contains notes: G3, A3, B3, C4, B3, A3, G3. There are various accidentals and dynamic markings, including a circled 'p', a '>' marking, and 'pp'.

dir + rit

E2

appassionato (buen)

Handwritten musical notation for the first system, measures 1-2. The music is in 3/4 time. The right hand starts with a half note G4 (marked with an accent ^) and a quarter note A4 (marked with an accent ^). The left hand has a bass line with a 4-measure rest, followed by a series of chords and eighth notes. The second measure continues the melodic line in the right hand with a half note B4 (marked with an accent ^) and a quarter note C5 (marked with an accent ^). The left hand continues with chords and eighth notes.

Handwritten musical notation for the second system, measures 3-4. The right hand continues the melodic line with a half note D5 (marked with an accent ^) and a quarter note E5 (marked with an accent ^). The left hand continues with chords and eighth notes. The second measure of this system features a more complex rhythmic pattern in the right hand with eighth and sixteenth notes.

Handwritten musical notation for the third system, measures 5-6. The right hand continues with a half note F5 (marked with an accent ^) and a quarter note G5 (marked with an accent ^). The left hand continues with chords and eighth notes. The second measure of this system features a more complex rhythmic pattern in the right hand with eighth and sixteenth notes. The system ends with a double bar line and a circled 'F' time signature change.

Presto

Handwritten musical notation on a grand staff. The notation includes a treble clef, a key signature of two sharps (F# and C#), and a time signature of 2/6. The word "Lungos" is written above the staff. The notation consists of several notes and rests, with some notes marked with a sharp sign. There are also some handwritten annotations like "bvert (auf)" and "7H".

Eight sets of empty musical staves, each consisting of a grand staff (treble and bass clefs).

F₂

Ador langsam

Handwritten musical notation for the first system. The treble clef staff contains several notes with accidentals (flats and sharps) and slurs. The bass clef staff contains chords and a key signature change to one sharp (F#). There are handwritten annotations above the treble staff, including a circled '99'.

Handwritten musical notation for the second system. The treble clef staff has notes with slurs and accidentals. The bass clef staff has chords and a key signature change to one flat (Bb). Dynamics markings include 'mp' and 'f'.

Handwritten musical notation for the third system. The treble clef staff has notes with slurs and accidentals. The bass clef staff has chords and a key signature change to one flat (Bb). The instruction 'grobes rhyth. Holz' is written above the treble staff.

Handwritten musical notation for the fourth system. The treble clef staff has notes with slurs and accidentals. The bass clef staff has chords and a key signature change to one flat (Bb). The system ends with a double bar line and a wavy line.

G2

breit (poco più)

(*rit.*)

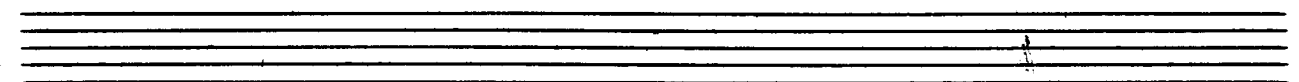
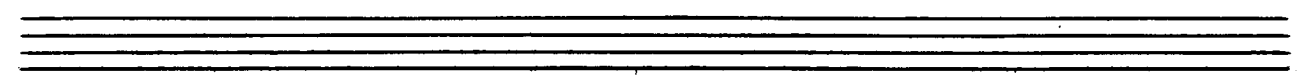
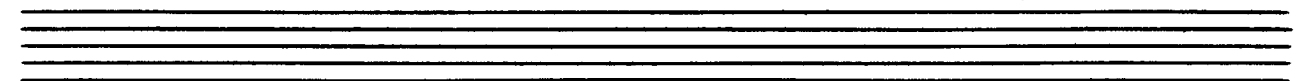
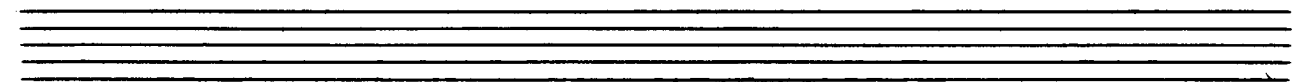
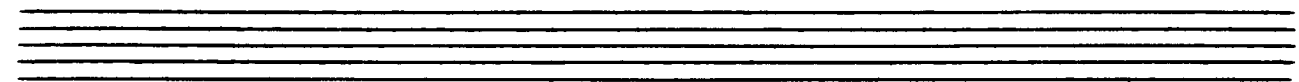
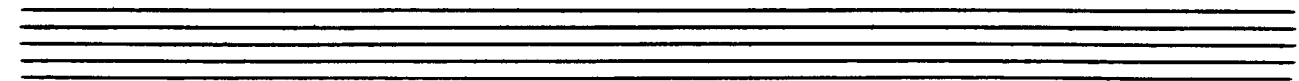
Handwritten musical score for the first system. It consists of two staves. The upper staff is in treble clef and the lower in bass clef. The music includes various note values, rests, and a circled key signature change to three sharps (F#, C#, G#) in the second measure of the lower staff.

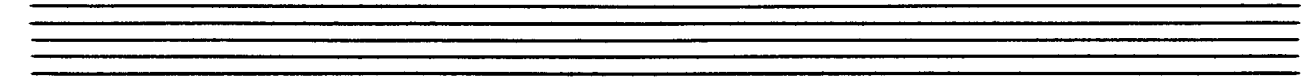
breit (*appassionato*)

Handwritten musical score for the second system. It consists of two staves. The upper staff is in treble clef and the lower in bass clef. The music includes notes, rests, and dynamic markings. The tempo/mood is indicated as *breit* (*appassionato*).

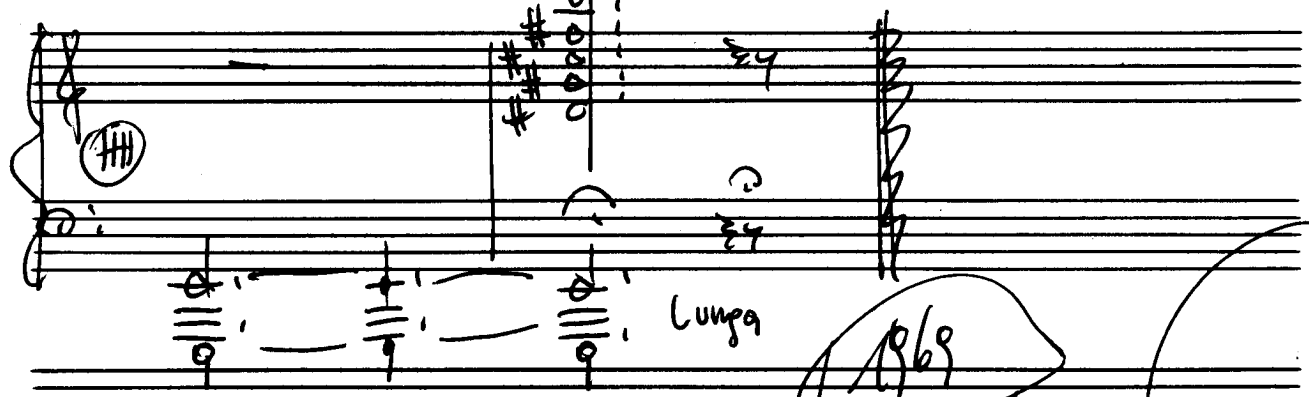
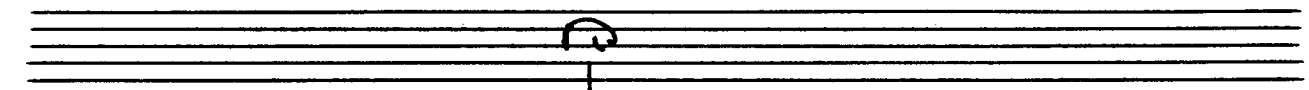
Handwritten musical score for the third system. It consists of two staves. The upper staff is in treble clef and the lower in bass clef. The music includes notes and rests.

Four empty musical staves, consisting of two pairs of treble and bass staves.





80.161



Lunga

1868

Wien Adolf Scherbaum

Amstert

