

L. V. BEETHOVEN



W. A. MOZART



NOTENHEFT

F. SCHUBERT



J. HAYDN



J. STRAUSS



Jazz Sonate 1969

in D (3 Sätze)

für Flöte

Baß

~~Piano~~

Schlagzeug

Adolf Scherbaum

Satz 1

Mod. assai

Handwritten musical score for the first system. It consists of three staves. The top staff is in treble clef with a key signature of one sharp (F#) and a 4/4 time signature. It contains a melodic line with notes and rests, including a circled 'p' (piano) dynamic marking. The middle staff is in bass clef and contains a bass line with notes and rests, also including a circled 'p' dynamic marking. The bottom staff is a grand staff (treble and bass clefs) with notes and rests. A circled '1' is written to the right of the staves.

Handwritten musical score for the second system. It consists of three staves. The top staff is in treble clef with a key signature of one sharp (F#) and a 4/4 time signature. It contains a melodic line with notes and rests, including a circled 'p' dynamic marking. The middle staff is in bass clef and contains a bass line with notes and rests, also including a circled 'p' dynamic marking. The bottom staff is a grand staff (treble and bass clefs) with notes and rests.

2

Handwritten musical notation for system 2, first two staves. The top staff is in treble clef with a key signature of one flat (B-flat) and a common time signature. It features a melodic line with slurs and accents. The bottom staff is in bass clef with a common time signature, showing a bass line with slurs.

Handwritten musical notation for system 2, third and fourth staves. The third staff is in treble clef and the fourth is in bass clef, both with common time signatures. The notation includes slurs and accents, continuing the piece from the previous staves.

3

Handwritten musical notation for system 3, first two staves. The top staff is in treble clef with a key signature of one flat and a common time signature. It includes a circled 'f' dynamic marking. The bottom staff is in bass clef with a common time signature and a circled 'f' dynamic marking.

Handwritten musical notation for system 3, third and fourth staves. The third staff is in treble clef and the fourth is in bass clef, both with common time signatures. The notation includes slurs and accents, continuing the piece from the previous staves.

4

Handwritten musical score for exercise 4. It consists of four staves. The first staff has a treble clef and a key signature of one sharp (F#). The second staff has a bass clef. The third and fourth staves have a treble clef. The music includes various rhythmic values, slurs, and accents. There are some handwritten annotations like 'f' and 'p'.

5

Handwritten musical score for exercise 5. It consists of four staves. The first staff has a treble clef and a key signature of one sharp (F#). The second staff has a bass clef. The third and fourth staves have a treble clef. The music includes various rhythmic values, slurs, and accents. There are some handwritten annotations like 'f' and 'p'.

6

Handwritten musical notation for the first system of exercise 6. It consists of two staves: a treble clef staff with a melodic line and a bass clef staff with a bass line. The treble staff features a series of chords and notes, with a slur over the first four measures and an accent (^) over the fifth. The bass staff contains a simple rhythmic accompaniment.

Handwritten musical notation for the second system of exercise 6. It consists of two staves: a treble clef staff with a melodic line and a bass clef staff with a bass line. The treble staff has a slur over the first two measures. The bass staff has a few notes and rests.

Handwritten musical notation for the third system of exercise 6. It consists of two staves: a treble clef staff with a melodic line and a bass clef staff with a bass line. The treble staff has a slur over the first three measures and an accent (^) over the fourth. The bass staff has a few notes and rests.

Handwritten musical notation for the fourth system of exercise 6. It consists of two staves: a treble clef staff with a melodic line and a bass clef staff with a bass line. The treble staff has a slur over the first two measures. The bass staff has a few notes and rests.

7

Handwritten musical notation for the first system of exercise 7. It consists of two staves: a treble clef staff with a melodic line and a bass clef staff with a bass line. The treble staff features a series of chords and notes, with a slur over the first four measures and an accent (^) over the fifth. The bass staff contains a simple rhythmic accompaniment.

Handwritten musical notation for the second system of exercise 7. It consists of two staves: a treble clef staff with a melodic line and a bass clef staff with a bass line. The treble staff has a slur over the first two measures. The bass staff has a few notes and rests.

Handwritten musical notation for the third system of exercise 7. It consists of two staves: a treble clef staff with a melodic line and a bass clef staff with a bass line. The treble staff has a slur over the first three measures and an accent (^) over the fourth. The bass staff has a few notes and rests.

Handwritten musical notation for the fourth system of exercise 7. It consists of two staves: a treble clef staff with a melodic line and a bass clef staff with a bass line. The treble staff has a slur over the first two measures. The bass staff has a few notes and rests.

8

Handwritten musical score for system 8. It consists of three staves: Treble Clef (top), Alto Clef (middle), and Bass Clef (bottom). The music is written in a style that appears to be a form of shorthand or simplified notation, possibly for a specific instrument or voice part. The notation includes notes with stems, beams, and various rests. There are also some markings that look like '7' and '3' above notes, possibly indicating fingerings or specific rhythmic values. The score is divided into measures by vertical bar lines.

9

Handwritten musical score for system 9. It consists of three staves: Treble Clef (top), Alto Clef (middle), and Bass Clef (bottom). The notation is similar to system 8, using a shorthand style with notes, stems, and beams. There are some markings above notes that look like '3' and '7', possibly indicating fingerings or rhythmic values. The score is divided into measures by vertical bar lines.

Handwritten musical score for page 40. The score is written on a grand staff with a treble clef on the top line and a bass clef on the bottom line. The key signature is one sharp (F#). The music consists of several measures with notes, rests, and slurs. There are some circled annotations, including a circled 'F#' in the treble clef staff and a circled 'F#' in the bass clef staff.

Handwritten musical score for page 11. The score is written on a grand staff with a treble clef on the top line and a bass clef on the bottom line. The key signature is one sharp (F#). The music consists of several measures with notes, rests, and slurs. There are some circled annotations, including a circled 'F#' in the treble clef staff and a circled 'F#' in the bass clef staff.

12

Handwritten musical notation for exercise 12, consisting of two systems. Each system has a treble clef staff, a bass clef staff, and a common time signature. The notation includes various notes, rests, and accidentals.

13

Handwritten musical notation for exercise 13, consisting of two systems. Each system has a treble clef staff, a bass clef staff, and a common time signature. The notation includes various notes, rests, and accidentals.

14

Handwritten musical score for exercise 14. It consists of three systems of staves. The first system has a treble clef and a key signature of one sharp (F#). The second system has a bass clef and a key signature of one sharp (F#). The third system has a bass clef and a key signature of one sharp (F#). The notation includes various notes, rests, and accidentals.

15

Handwritten musical score for exercise 15. It consists of three systems of staves. The first system has a treble clef and a key signature of one sharp (F#). The second system has a bass clef and a key signature of one sharp (F#). The third system has a bass clef and a key signature of one sharp (F#). The notation includes various notes, rests, and accidentals.

Handwritten musical score for page 16. The score consists of five staves. The top staff has a treble clef and a single note with an accent (^) above it. The second staff has a bass clef and contains rhythmic notation with stems and flags. The third staff has a treble clef and contains complex chordal structures with many notes and accidentals. The fourth staff has a bass clef and contains rhythmic notation with stems and flags. The fifth staff has a treble clef and contains rhythmic notation with stems and flags. There are various dynamic markings and slurs throughout the score.

Handwritten musical score for page 17. The score consists of five staves. The top staff has a bass clef and contains rhythmic notation with stems and flags. The second staff has a treble clef and contains complex chordal structures with many notes and accidentals. The third staff has a bass clef and contains rhythmic notation with stems and flags. The fourth staff has a treble clef and contains rhythmic notation with stems and flags. The fifth staff has a treble clef and contains rhythmic notation with stems and flags. There are various dynamic markings and slurs throughout the score.

1.

D.C. (7P)

Handwritten musical score for system 1. It features four staves: three for strings (Violin I, Violin II, Viola) and one for the Cello/Double Bass. The strings play sustained notes. The Cello/Double Bass part includes a 'Solo' section with rhythmic patterns and a 'dim' section with a melodic line. There are dynamic markings like 'f' and 'p'.

2.

(7P)

Handwritten musical score for system 2. It features four staves: three for strings (Violin I, Violin II, Viola) and one for the Cello/Double Bass. The strings play sustained notes. The Cello/Double Bass part includes a 'Solo' section with rhythmic patterns and a 'dim' section with a melodic line. There are dynamic markings like 'f' and 'p'.

tempo di

Handwritten musical score for page 20, measures 1-4. The score is written in treble and bass clefs with a key signature of one sharp (F#) and a 2/4 time signature. The melody in the treble clef consists of quarter notes: G4, A4, B4, C5, B4, A4, G4. The bass clef accompaniment consists of quarter notes: G3, A3, B3, C4, B3, A3, G3. There are dynamic markings like 'f' and 'p' and some slurs.

Handwritten musical score for page 21, measures 5-8. The score continues from page 20. The treble clef melody has a rest in measure 5, followed by quarter notes G4, A4, B4, C5, B4, A4, G4 in measure 6. The bass clef accompaniment continues with quarter notes G3, A3, B3, C4, B3, A3, G3. There are dynamic markings like 'f' and 'p' and some slurs.

22

Handwritten musical score for page 22. The score is divided into two systems. The left system shows a piano accompaniment with a treble clef and a bass clef. The right system shows a vocal line with a treble clef and lyrics written below it. There are several circled 'P' markings throughout the score, likely indicating piano dynamics.

sempre due

23

24

Handwritten musical score for page 24. The score is divided into two systems. The left system shows a piano accompaniment with a treble clef and a bass clef. The right system shows a vocal line with a treble clef and lyrics written below it. There are several circled 'P' markings throughout the score, likely indicating piano dynamics. The text "sempre due" is written above the score.

Handwritten musical score on a five-line staff. The notation includes various notes, rests, and dynamic markings.

- Staff:** A five-line musical staff with a treble clef.
- Measure 1:** Starts with the word "frei" above the staff. The first note is a quarter note G4. This is followed by a half rest.
- Measure 2:** Contains a half note G4 with a fermata above it.
- Measure 3:** Contains a half note G4 with a fermata above it.
- Measure 4:** Contains a half note G4 with a fermata above it.
- Measure 5:** Contains a half note G4 with a fermata above it.
- Measure 6:** Contains a half note G4 with a fermata above it.
- Measure 7:** Contains a half note G4 with a fermata above it.
- Measure 8:** Contains a half note G4 with a fermata above it.
- Measure 9:** Contains a half note G4 with a fermata above it.
- Measure 10:** Contains a half note G4 with a fermata above it.
- Measure 11:** Contains a half note G4 with a fermata above it.
- Measure 12:** Contains a half note G4 with a fermata above it.
- Measure 13:** Contains a half note G4 with a fermata above it.
- Measure 14:** Contains a half note G4 with a fermata above it.
- Measure 15:** Contains a half note G4 with a fermata above it.
- Measure 16:** Contains a half note G4 with a fermata above it.
- Measure 17:** Contains a half note G4 with a fermata above it.
- Measure 18:** Contains a half note G4 with a fermata above it.
- Measure 19:** Contains a half note G4 with a fermata above it.
- Measure 20:** Contains a half note G4 with a fermata above it.
- Measure 21:** Contains a half note G4 with a fermata above it.
- Measure 22:** Contains a half note G4 with a fermata above it.
- Measure 23:** Contains a half note G4 with a fermata above it.
- Measure 24:** Contains a half note G4 with a fermata above it.
- Measure 25:** Contains a half note G4 with a fermata above it. A circled number "25" is written to the right of the staff.

Additional annotations include "lunga" written above the staff in the later measures, and various dynamic markings such as "p", "pp", "ff", and "f". There are also some scribbles and wavy lines below the staff in the later measures.

Satz 2

Langsam (Bläsertempo) melodie $\frac{4}{4}$ (etwas frei)

26

Handwritten musical score for page 26, measures 1-4. The score is written in G major (one sharp) and 4/4 time. It features a melody in the upper voice and accompaniment in the lower voice. The melody starts with a quarter note G, followed by a dotted quarter note A, a quarter note B, a quarter note C, and a quarter note D. The accompaniment consists of a steady quarter-note bass line. Dynamic markings include *p* (piano) and *f* (forte). There are also slurs and accents over the notes.

27

Handwritten musical score for page 27, measures 5-8. The score continues from page 26. It features a melody in the upper voice and accompaniment in the lower voice. The melody starts with a quarter note E, followed by a dotted quarter note F, a quarter note G, a quarter note A, and a quarter note B. The accompaniment consists of a steady quarter-note bass line. Dynamic markings include *p* (piano) and *f* (forte). There are also slurs and accents over the notes.

Handwritten musical score for the first system, consisting of three measures. The notation includes:

- Measure 1:** Treble clef, key signature of one flat (B-flat), and a dynamic marking of *f*. The melody features a triplet of eighth notes with accents and a slur. The bass line has a quarter note followed by a dotted quarter note.
- Measure 2:** Treble clef, key signature of one flat, and a dynamic marking of *f*. The melody continues with a triplet of eighth notes and a slur. The bass line has a quarter note followed by a dotted quarter note.
- Measure 3:** Treble clef, key signature of one flat, and a dynamic marking of *mf*. The melody features a triplet of eighth notes with accents and a slur. The bass line has a quarter note followed by a dotted quarter note.

28

Handwritten musical score for the second system, consisting of three measures. The notation includes:

- Measure 1:** Treble clef, key signature of one flat, and a dynamic marking of *f*. The melody features a triplet of eighth notes with accents and a slur. The bass line has a quarter note followed by a dotted quarter note.
- Measure 2:** Treble clef, key signature of one flat, and a dynamic marking of *f*. The melody continues with a triplet of eighth notes and a slur. The bass line has a quarter note followed by a dotted quarter note.
- Measure 3:** Treble clef, key signature of one flat, and a dynamic marking of *f*. The melody features a triplet of eighth notes with accents and a slur. The bass line has a quarter note followed by a dotted quarter note.

29

30

31

Handwritten musical score for exercise 31. The score is written on three staves: piano (top), violin (middle), and cello/bass (bottom). The piano part features a series of chords and melodic lines, with some notes marked with accents (>) and slurs. The violin part consists of a series of chords, some with slurs. The cello/bass part features a rhythmic pattern of eighth notes, with some notes marked with accents (>) and slurs.

32

Handwritten musical score for exercise 32. The score is written on three staves: piano (top), violin (middle), and cello/bass (bottom). The piano part features a series of chords and melodic lines, with some notes marked with accents (>) and slurs. The violin part consists of a series of chords, some with slurs. The cello/bass part features a rhythmic pattern of eighth notes, with some notes marked with accents (>) and slurs.

Handwritten musical score for the first system, consisting of two measures. The first measure features a treble clef, a key signature of one sharp (F#), and a complex melodic line with a slur and accents. The bass clef part includes a triplet. The second measure continues the melodic line with a slur and accents, and the bass clef part has a triplet. A circled number '33' is visible on the right side of the page.

Handwritten musical score for the second system, consisting of two measures. The first measure features a treble clef, a key signature of one sharp (F#), and a complex melodic line with a slur and accents. The bass clef part includes a triplet. The second measure continues the melodic line with a slur and accents, and the bass clef part has a triplet.

(poco rit)

CODA

Handwritten musical score for the first system. It features a treble clef staff with a key signature of one flat (B-flat) and a common time signature. The notation includes various rhythmic values, slurs, and dynamic markings. Below the treble staff are two bass clef staves, likely for strings, with notes and stems. A large bracket spans across the top of the system, and a vertical line separates the first and second measures.

3/4 tempo!

45

Handwritten musical score for the second system. It continues with the same treble clef staff and key signature. The notation is more complex, featuring many beamed notes and slurs. Below the treble staff are two bass clef staves with notes and stems. A large bracket spans across the top of the system, and a vertical line separates the first and second measures.

36

(accel.) →

37

sehr
parade $\frac{4}{4}$

38

39

Handwritten musical notation on page 40. The page is divided into two systems. The top system contains a treble clef staff with a melodic line and a bass clef staff with a bass line. The bottom system contains a treble clef staff with a melodic line and a bass clef staff with a bass line. The notation includes various notes, rests, and accidentals. A circled number '40' is in the top right corner. The text 'mehr steigen →' is written in the middle of the page.

40

mehr steigen →

Handwritten musical notation on page 23. The page is divided into two systems. The top system contains a treble clef staff with a melodic line and a bass clef staff with a bass line. The bottom system contains a treble clef staff with a melodic line and a bass clef staff with a bass line. The notation includes various notes, rests, and accidentals.

41

0 III

Handwritten musical score for the first system, consisting of three staves. The top staff contains several notes with accents and circled accidentals (sharps). The middle staff shows complex rhythmic patterns with stems and beams. The bottom staff contains a series of notes with stems and beams. A large bracket spans across the three staves, and there are various annotations and markings throughout the system.

42

Handwritten musical score for the second system, featuring a single staff with a complex melodic line. The notation includes many notes with stems and beams, some with circled accidentals. There are several annotations, including the word "Prai" and the number "4(1e)", and various markings above and below the staff.

Handwritten musical score for the third system, consisting of three staves. The top staff has notes with stems and beams, and a circled sharp. The middle staff is mostly empty with some faint markings. The bottom staff has notes with stems and beams, and a circled sharp. There are various annotations and markings throughout the system.

22

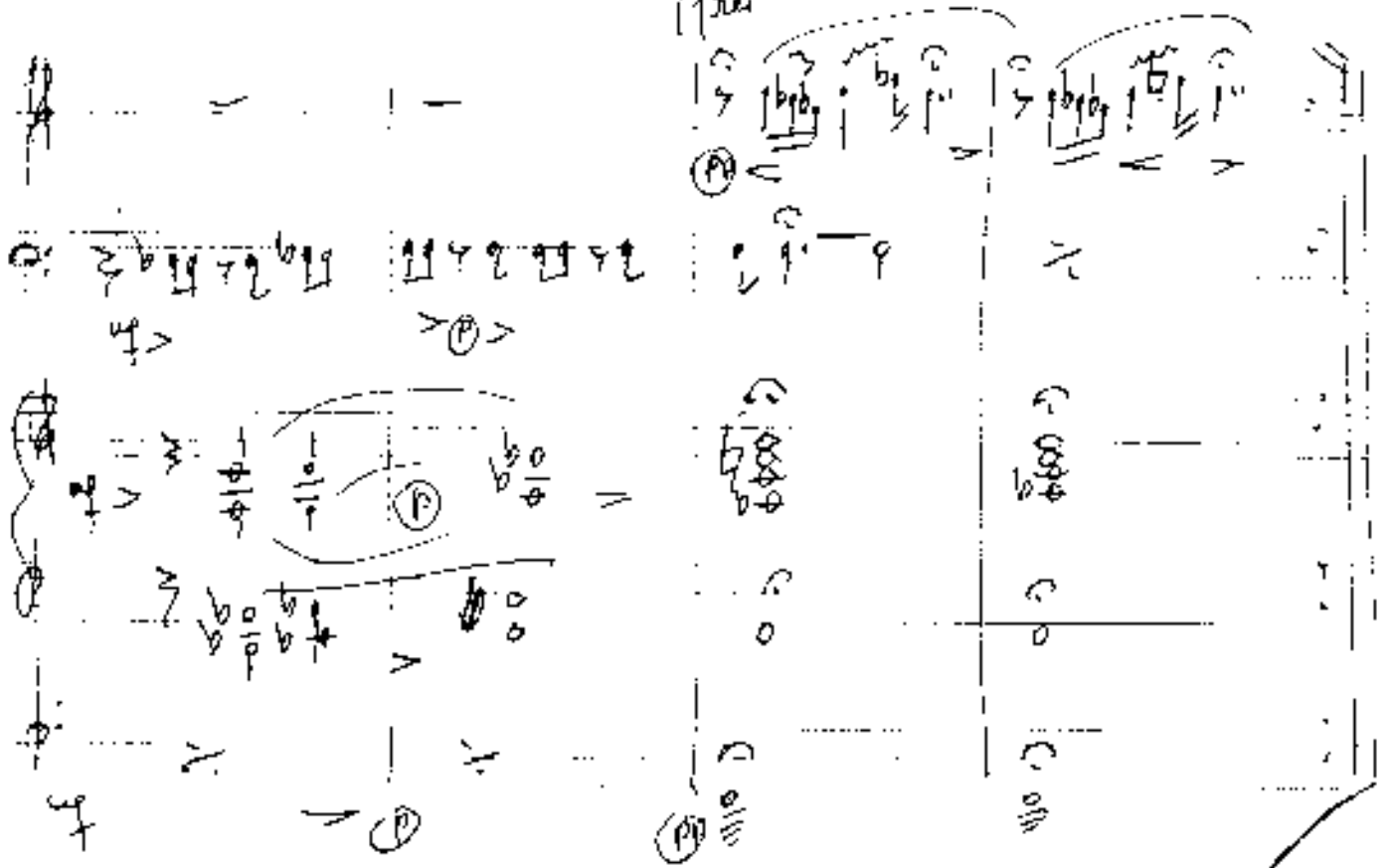
breit Größen mit + klein



43

(frei)

2. +
D.C. ad



Handwritten musical score on a page with a large wavy line across the middle. The score is written in black ink on a white background.

Top Section:

- Left side: A treble clef with a circled 'C' and 'ODH'. Below it, the text "(frei (sando)".
- Middle: A series of notes with stems and flags, some with accents (^). Below the notes are wavy lines representing a bass line.
- Right side: A treble clef with a circled 'E4'. Above it, the word "Lunga" is written. Below it, the dynamic marking "pp" is present.

Middle Section:

- Left side: A treble clef with a circled 'F' and 'S'. Below it, the text "(frei & #)" is written.
- Middle: A series of notes with stems and flags, some with accents (^). Below the notes are wavy lines representing a bass line.
- Right side: A treble clef with a circled 'F' and 'S'. Below it, the text "# (frei & #)" is written. The dynamic marking "pp" is present.

Bottom Section:

- Left side: A treble clef with a circled 'F' and 'S'. Below it, the text "Crom" is written.
- Middle: A series of notes with stems and flags, some with accents (^). Below the notes are wavy lines representing a bass line.
- Right side: A treble clef with a circled 'F' and 'S'. Below it, the text "# (frei & #)" is written. The dynamic marking "pp" is present.

The page contains several empty musical staves at the bottom, indicating it is a page from a manuscript or a notebook.

oder
rasch

Satz 3

45

$f' \downarrow f' \downarrow b' \downarrow f' \downarrow$ $b' \downarrow f' \downarrow$ $f' \downarrow f' \downarrow b' \downarrow f' \downarrow$ $b' \downarrow f' \downarrow$

(oder gleiche Viertel im Bass)

$\frac{A}{\downarrow \downarrow \downarrow}$ $\frac{A}{\downarrow \downarrow \downarrow}$ $\frac{A}{\downarrow \downarrow \downarrow}$

$f' \downarrow f' \downarrow$ $f' \downarrow f' \downarrow$

46

$\frac{b}{\downarrow \downarrow \downarrow}$ $\frac{b}{\downarrow \downarrow \downarrow}$ $\frac{a}{\downarrow \downarrow \downarrow}$ $\frac{a}{\downarrow \downarrow \downarrow}$

$f' \downarrow f' \downarrow f' \downarrow$ $b' \downarrow f' \downarrow$ $f' \downarrow f' \downarrow$ $b' \downarrow f' \downarrow$

$\frac{A}{\downarrow \downarrow \downarrow}$ $\frac{A}{\downarrow \downarrow \downarrow}$ $\frac{A}{\downarrow \downarrow \downarrow}$

$f' \downarrow f' \downarrow$ $f' \downarrow f' \downarrow$

47

Handwritten musical score for exercise 47. It features a treble clef, a key signature of one sharp (F#), and a 3/4 time signature. The score consists of two systems. The first system has two staves: the upper staff contains a melodic line with eighth and sixteenth notes, and the lower staff contains a rhythmic accompaniment of eighth notes. The second system continues the piece with similar notation. The word "FILL" is written vertically on the left side of the first system.

48

Handwritten musical score for exercise 48. It features a treble clef, a key signature of one sharp (F#), and a 3/4 time signature. The score consists of two systems. The first system has two staves: the upper staff contains a melodic line with eighth and sixteenth notes, and the lower staff contains a rhythmic accompaniment of eighth notes. The second system continues the piece with similar notation. The word "FILL" is written vertically on the left side of the first system.

Handwritten musical score for exercise 49, consisting of two systems of three staves each. The first system is marked with a circled '49' and a key signature of one sharp (F#). The notation includes various rhythmic values, slurs, and accents. The second system continues the piece with similar notation and includes a circled '49' at the beginning of the second staff.

Handwritten musical score for exercises 50 and 51, consisting of two systems of three staves each. Exercise 50 is marked with a circled '50' and a key signature of one flat (Bb). Exercise 51 is marked with a circled '51' and a key signature of one sharp (F#). The notation includes various rhythmic values, slurs, and accents.

52

30

53

Handwritten musical score for system 53. The system includes four staves: guitar (top), bass (second), and two drum staves (bottom). The guitar staff shows a series of chords and a melodic line. The bass staff contains rhythmic notation with notes and rests. The drum staves show a drum set configuration and rhythmic patterns. There are circled numbers 53 and 54 in the score, likely indicating measure numbers or system markers. The notation is dense and includes various musical symbols such as stems, beams, and accidentals.

54

Handwritten musical score for system 54. The system includes four staves: guitar (top), bass (second), and two drum staves (bottom). The guitar staff shows a series of chords and a melodic line. The bass staff contains rhythmic notation with notes and rests, and includes the annotation "Solo (AptB)". The drum staves show a drum set configuration and rhythmic patterns. The notation is dense and includes various musical symbols such as stems, beams, and accidentals.

Handwritten musical score for a guitar solo. The score is written on a grand staff with a treble clef and a key signature of one flat (B-flat). The tempo is marked *Andante*. The first measure is marked with a circled 'f' and a box labeled 'Solo'. The melody consists of eighth and quarter notes, with some notes beamed together. The bass line is indicated by a wavy line and some notes. The score is divided into four measures by vertical bar lines.

Handwritten musical score for a guitar solo, continuing from the previous page. A circled '55' is written above the first measure. The score is written on a grand staff with a treble clef and a key signature of one flat (B-flat). The tempo is marked *Andante*. The melody continues with eighth and quarter notes. The bass line is indicated by a wavy line and some notes. The score is divided into four measures by vertical bar lines.

56

57

58

Handwritten musical score for exercise 58. The score is written on a five-line staff with a treble clef. The key signature has one flat (B-flat). The notation includes quarter notes, eighth notes, and rests. There are also some handwritten annotations and symbols, possibly indicating fingerings or performance techniques. The score is divided into measures by vertical bar lines.

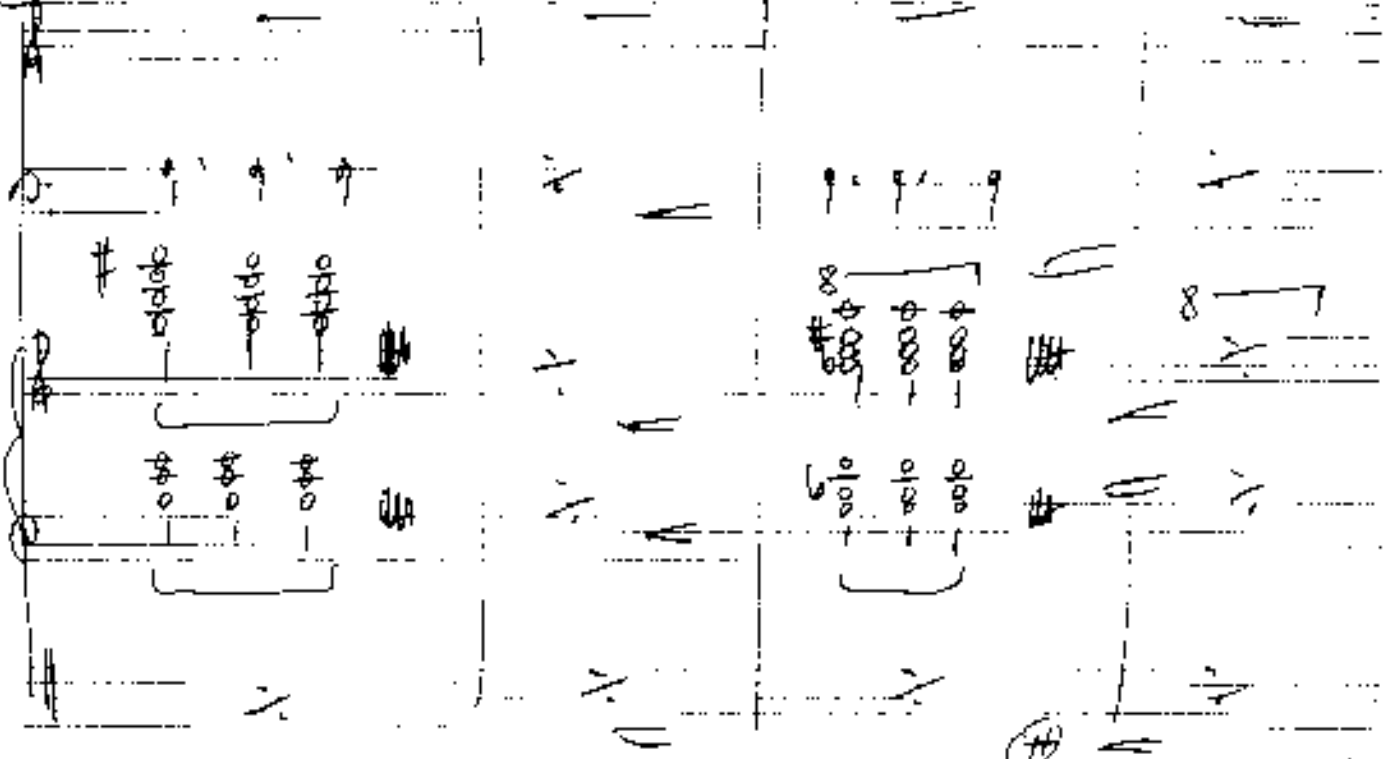
59

Handwritten musical score for exercise 59. The score is written on a five-line staff with a treble clef. The key signature has two sharps (F# and C#). The notation includes quarter notes, eighth notes, and rests. There are also some handwritten annotations and symbols, possibly indicating fingerings or performance techniques. The score is divided into measures by vertical bar lines.

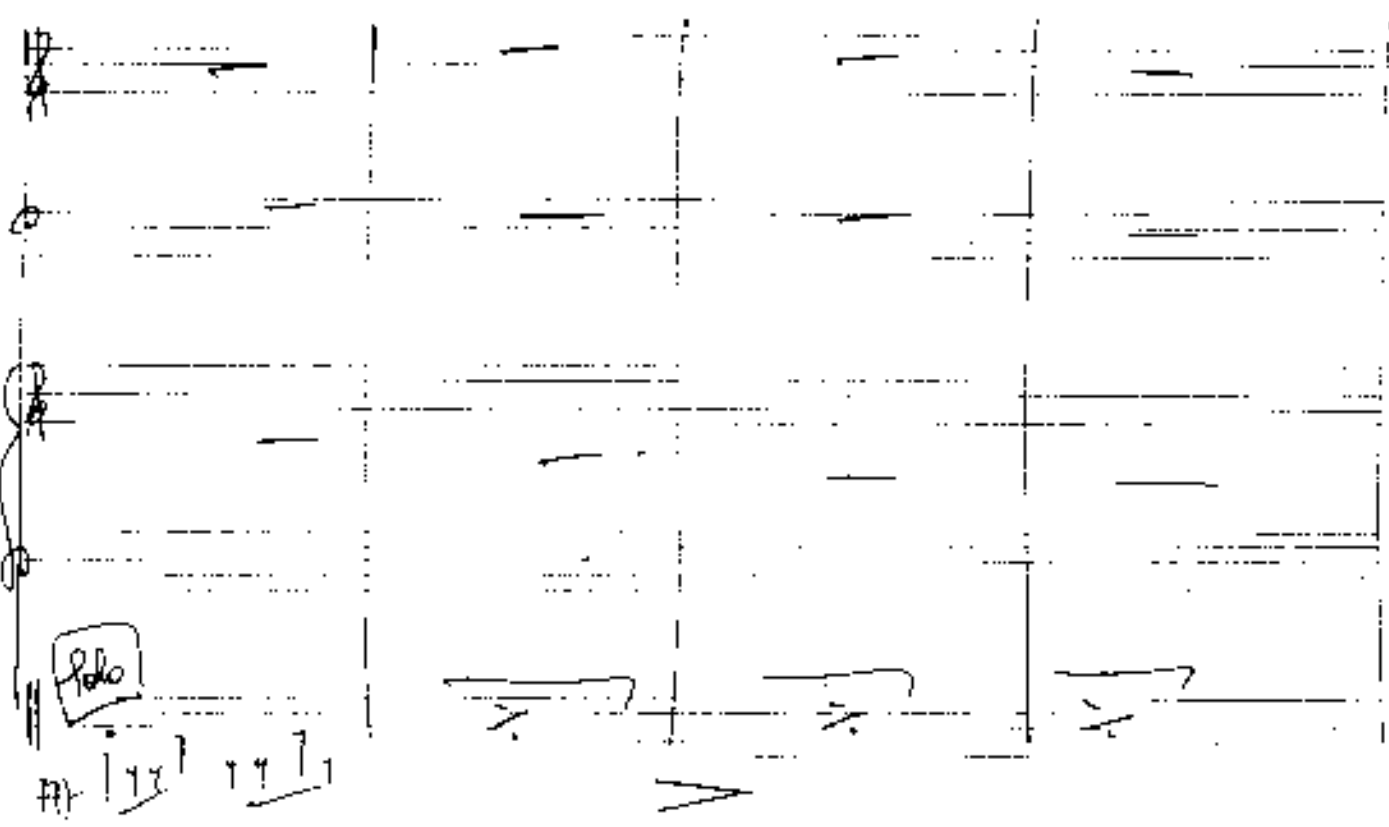
60

61

62



63



35

Handwritten musical score for page 64. The score is written on four staves. The top staff uses a treble clef and a key signature of one sharp (F#). The time signature is 2/4. The first measure is marked with a circled 'H'. The notation includes various chords and melodic lines with slurs and accents. The bottom staff contains rhythmic markings '7 7 7 7 7 7'.

Handwritten musical score for page 65. The score is written on four staves. The top staff uses a treble clef and a key signature of one sharp (F#). The time signature is 2/4. The notation includes various chords and melodic lines with slurs and accents. The bottom staff contains rhythmic markings '7 7 7 7 7 7'.

66

Handwritten musical score for exercise 66. It features a treble clef, a key signature of one sharp (F#), and a 3/4 time signature. The score consists of three systems. The first system has a treble clef staff with a melodic line and a bass clef staff with a bass line. The second system has a treble clef staff with a melodic line and a bass clef staff with a bass line. The third system has a treble clef staff with a melodic line and a bass clef staff with a bass line. The notation includes various rhythmic values, accidentals, and phrasing slurs.

67

Handwritten musical score for exercise 67. It features a treble clef, a key signature of one flat (Bb), and a 3/4 time signature. The score consists of three systems. The first system has a treble clef staff with a melodic line and a bass clef staff with a bass line. The second system has a treble clef staff with a melodic line and a bass clef staff with a bass line. The third system has a treble clef staff with a melodic line and a bass clef staff with a bass line. The notation includes various rhythmic values, accidentals, and phrasing slurs.

Handwritten musical score for a piece in D major, measures 1-3. The score is written on four staves: Treble Clef, Bass Clef, Violin I, and Violin II. Measure 1 shows a melodic line in the treble clef and a bass line in the bass clef. Measures 2 and 3 show a continuation of the melody and bass line, with some notes marked with accents and slurs.

68

Handwritten musical score for a piece in D major, measures 4-6. The score is written on four staves: Treble Clef, Bass Clef, Violin I, and Violin II. Measure 4 shows a melodic line in the treble clef and a bass line in the bass clef. Measures 5 and 6 show a continuation of the melody and bass line, with some notes marked with accents and slurs.

69

Handwritten musical score for measures 69-71. The score is written on a grand staff with treble, alto, and bass clefs. The treble clef part contains a melodic line with slurs and accents. The alto and bass clef parts contain chordal accompaniment, with some notes marked with 'x' for mutes. A 'CODA' sign is present at the end of the section.

70

Handwritten musical score for measures 70-71. The score is written on a grand staff with treble, alto, and bass clefs. The treble clef part contains a melodic line with slurs and accents. The alto and bass clef parts contain chordal accompaniment. A 'Solo' sign is present in the bass clef part. A 'CODA' sign is present at the end of the section.

1. +

2. +

+ mehr zu dünn (ein großes mit.....)

Solo

(das Solo von Polylagwerte (ast. 2. b.
 kann auch auf 16 oder 32 Takte
 erweitert werden!

dünn

Flöte (mit Kopf einer Holzflöte) — (Haltkautschuk —)

73

Handwritten musical notation for Flute, measures 1-4. Includes notes with stems, slurs, and dynamic markings like *pp*.

Handwritten musical notation for Flute, measures 5-8. Includes notes with stems, slurs, and dynamic markings like *pp*. The word "diebstehen" is written above the staff.

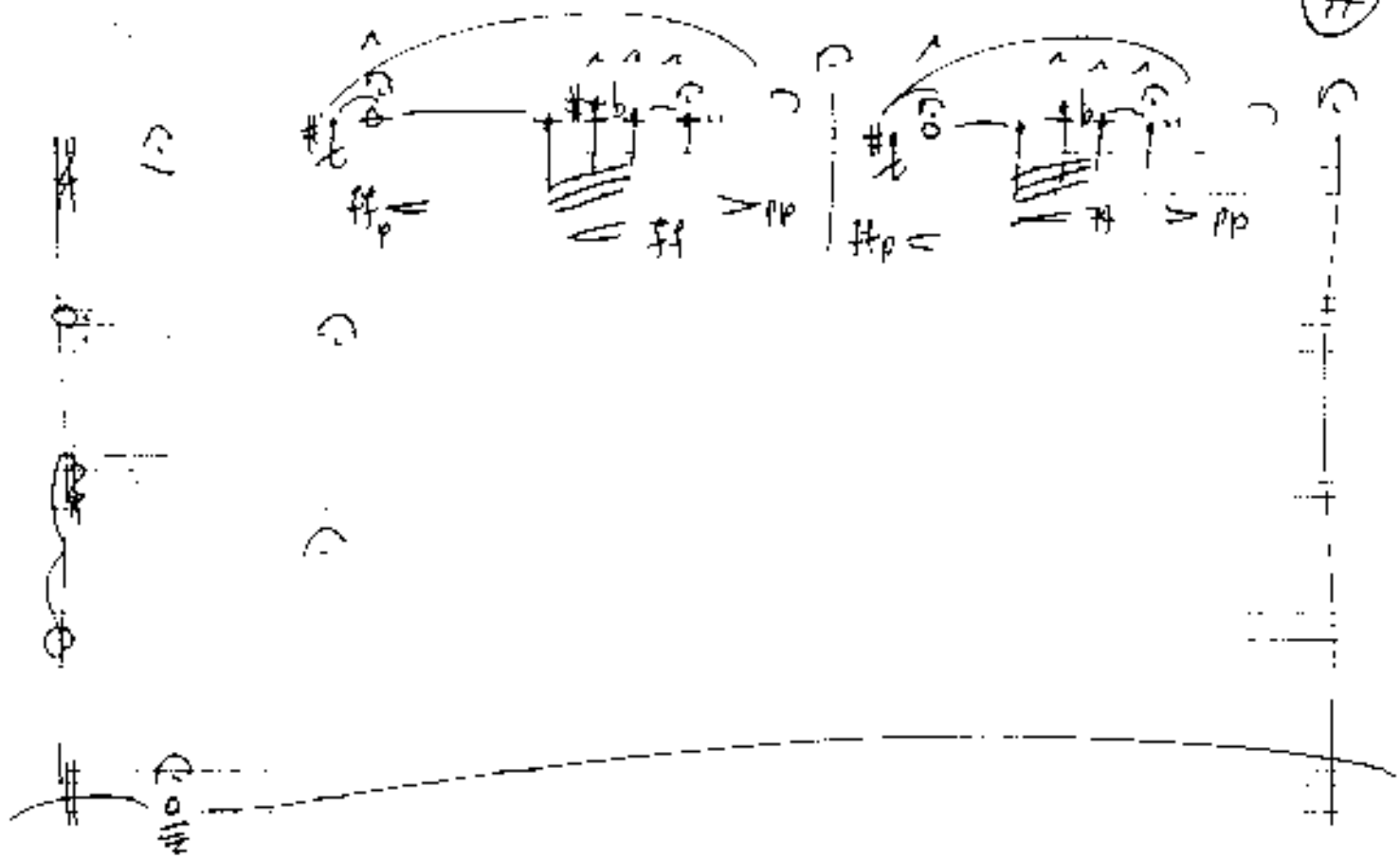
Handwritten musical notation for Flute, measures 9-12. Includes notes with stems, slurs, and dynamic markings like *pp*. The word "diebstehen" is written above the staff.

Handwritten musical notation for Flute, measures 13-16. Includes notes with stems, slurs, and dynamic markings like *pp*. The word "diebstehen" is written above the staff.

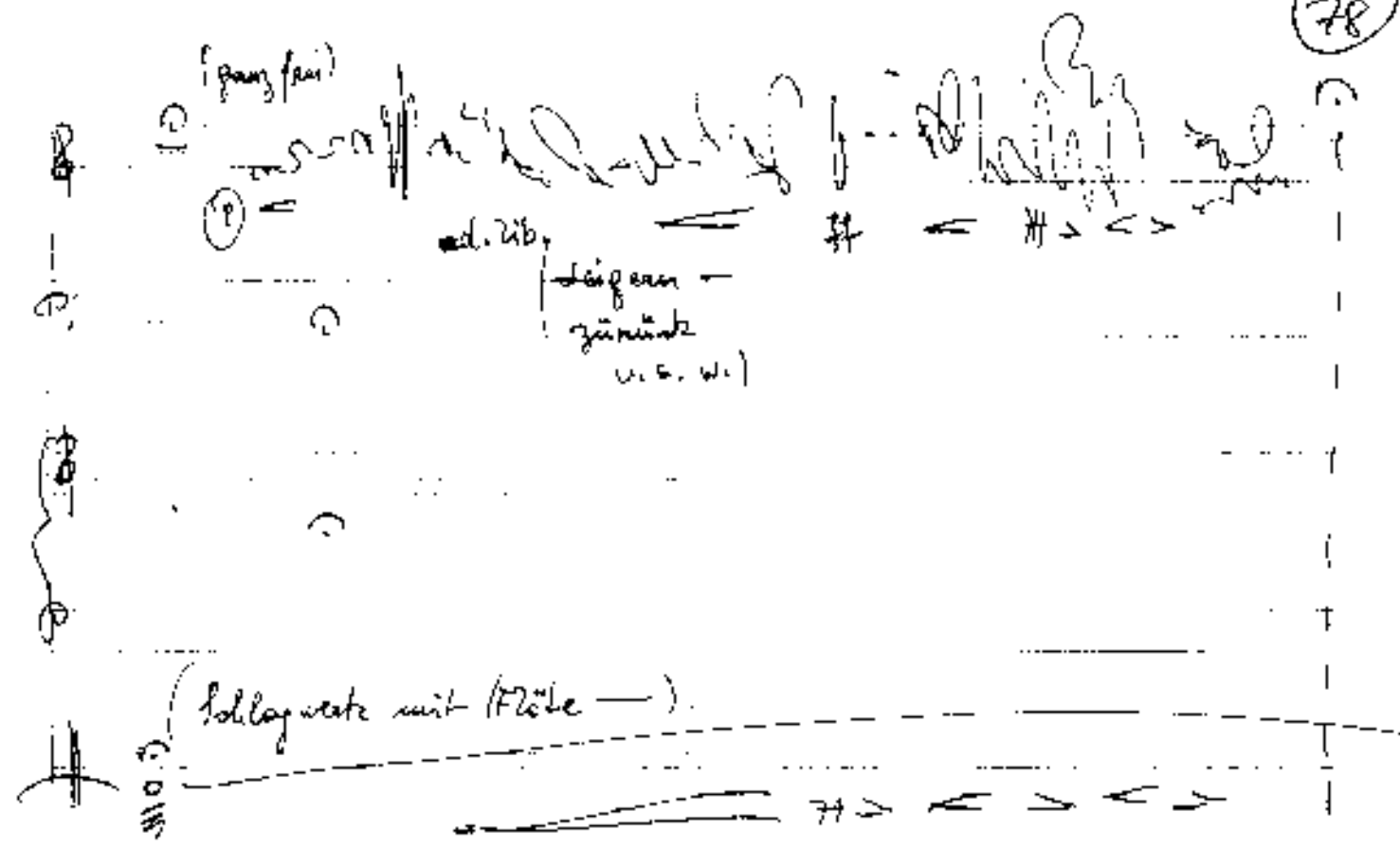
Handwritten musical score for page 75. The score is written on a grand staff with three systems of staves. The top system contains a piano part with a treble clef, a key signature of one sharp (F#), and a 2/4 time signature. The tempo marking is *Presto*. The dynamics range from *ff* (fortissimo) to *pp* (pianissimo). The piece concludes with a double bar line and the word *fine*. The bottom system contains a bass line with a bass clef and a common time signature (C). The page number 75 is circled in the top right corner.

Handwritten musical score for page 76. The score is written on a grand staff with three systems of staves. The top system contains a piano part with a treble clef, a key signature of one sharp (F#), and a 2/4 time signature. The tempo marking is *Presto*. The dynamics range from *ffp* (fortissimo piano) to *pp* (pianissimo). The piece concludes with a double bar line and the word *fine*. The bottom system contains a bass line with a bass clef and a common time signature (C). The page number 76 is circled in the top right corner.

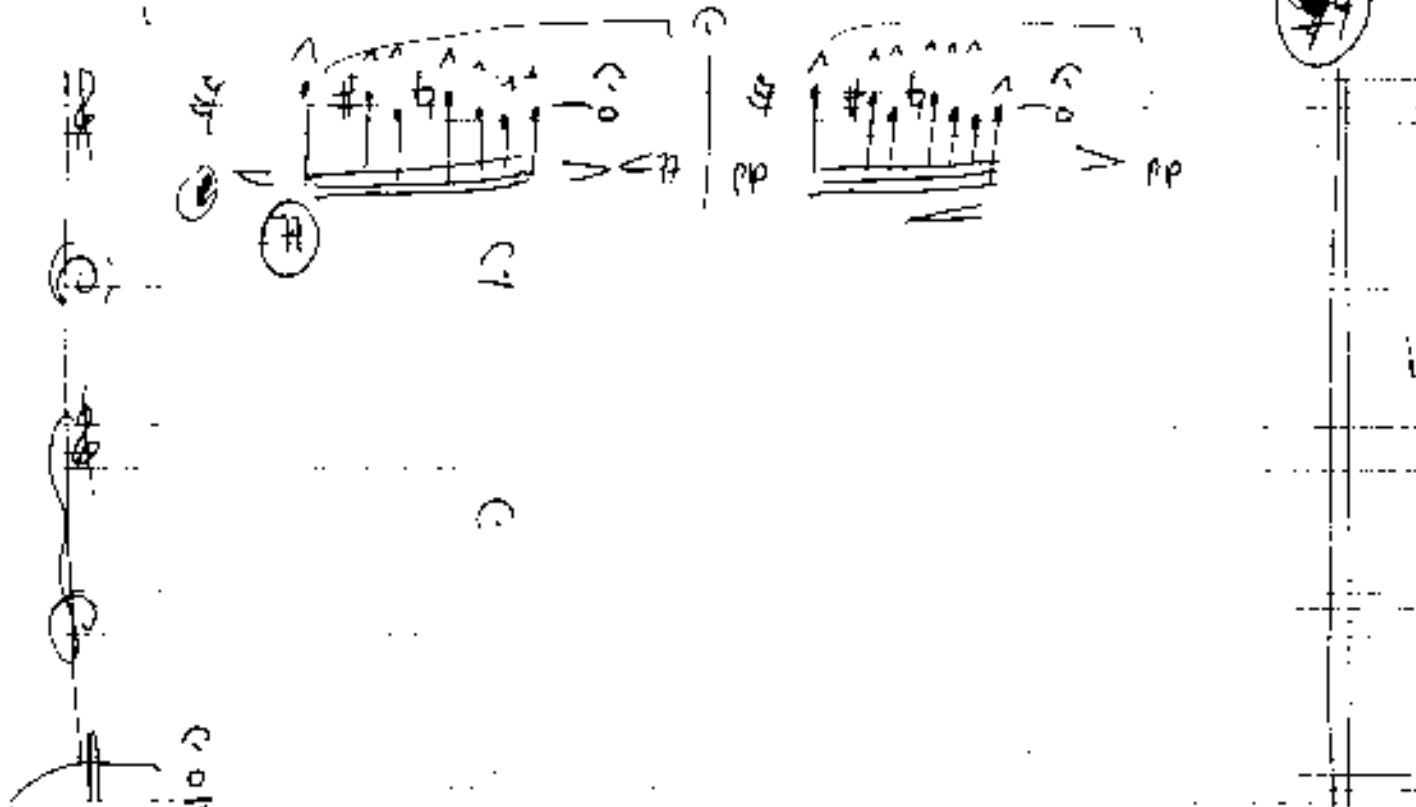
77



78



Normal Flute



D.C.
Bats (3)
al. ϕ COOA

noch steigen

♩ Coda

tolo

tolo

tolo

Handwritten musical score for the first system, consisting of three systems of staves. The first system includes a treble clef staff with notes and rests, a bass clef staff with notes and rests, and a piano staff with notes and rests. The second system continues the notation with similar elements. The third system concludes with a treble clef staff, a bass clef staff, and a piano staff. The word "solo" is written in the bottom right corner of the first system.

Handwritten musical score for the second system, consisting of three systems of staves. The first system includes a treble clef staff with notes and rests, a bass clef staff with notes and rests, and a piano staff with notes and rests. The second system continues the notation with similar elements. The third system concludes with a treble clef staff, a bass clef staff, and a piano staff. The word "solo" is written in the bottom left corner of the second system.

Handwritten musical notation on a five-line staff. It features several measures of music with notes, stems, and beams. There are several circled symbols, possibly indicating specific notes or chords. The notation is somewhat sketchy and appears to be a working draft.

A large, sweeping handwritten scribble that starts from the top left and curves down and to the right, crossing multiple staves. It contains the handwritten text "P. 69" and "Stacy Johnson".