

Notenheft

Improvisation über das Lied,

(Die dunkle Wolke) (1646)

für Orgel 1969

Archie Scherbaum

(Es geht ein' dunkle Wolk' heren, /
nich' deucht, es wird ein Regen sein, /
ein Regen aus den Wolken —, /
wehl in das grüne Gras) —

Puckly flüchtig

Handwritten musical notation for the first system. It consists of two staves. The top staff is in treble clef with a 3/4 time signature. The bottom staff is in bass clef with a 4/4 time signature. The music features a melodic line in the treble and a bass line in the bass. The first measure of the treble staff has a circled 'p' below it. The piece is marked 'Puckly flüchtig'.

Handwritten musical notation for the second system. It consists of two staves. The top staff is in treble clef and the bottom staff is in bass clef. The music continues with a melodic line in the treble and a bass line in the bass. The piece is marked 'Puckly flüchtig'.

Handwritten musical notation for the third system. It consists of two staves. The top staff is in treble clef and the bottom staff is in bass clef. The music continues with a melodic line in the treble and a bass line in the bass. The piece is marked 'Puckly flüchtig'.

Handwritten musical notation for the first system. The treble staff contains a melodic line with notes G4, A4, B4, and C5, each with a slur above it. The bass staff contains a bass line with notes G2, A2, B2, and C3, each with a slur below it. The key signature has one flat (Bb) and the time signature is 4/4.

Handwritten musical notation for the second system. The treble staff contains a melodic line with notes G4, A4, B4, and C5, each with a slur above it. The bass staff contains a bass line with notes G2, A2, B2, and C3, each with a slur below it. The key signature has one flat (Bb) and the time signature is 4/4.

Handwritten musical notation for the third system. The treble staff contains a melodic line with notes G4, A4, B4, and C5, each with a slur above it. The bass staff contains a bass line with notes G2, A2, B2, and C3, each with a slur below it. The key signature has one flat (Bb) and the time signature is 4/4.

Handwritten musical notation for the fourth system. The treble staff contains a melodic line with notes G4, A4, B4, and C5, each with a slur above it. The bass staff contains a bass line with notes G2, A2, B2, and C3, each with a slur below it. The key signature has one flat (Bb) and the time signature is 4/4.

Handwritten musical notation for the first system. The treble staff contains a melodic line with notes and accidentals (flats and naturals) across four measures. The bass staff contains a bass line with notes and accidentals, including a prominent flat sign in the first measure.

Handwritten musical notation for the second system. The treble staff continues the melodic line with notes and accidentals. The bass staff features a bass line with notes and accidentals, including a flat sign in the first measure.

Handwritten musical notation for the third system. The treble staff continues the melodic line with notes and accidentals. The bass staff features a bass line with notes and accidentals, including a flat sign in the first measure.

Handwritten musical notation for the fourth system. The treble staff continues the melodic line with notes and accidentals. The bass staff features a bass line with notes and accidentals, including a flat sign in the first measure.

Handwritten musical notation for the first system. The treble clef staff contains a melodic line with notes and accidentals (sharps and flats) across three measures. The bass clef staff contains a bass line with notes and dynamics: *bp.* (pianissimo) in the first measure, *ff* (fortissimo) in the second measure, and *f* (forte) in the third measure. A slur covers the first two measures of the bass line.

Handwritten musical notation for the second system. The treble clef staff contains a melodic line with notes and accidentals across three measures. The bass clef staff contains a bass line with notes and dynamics: *f* (forte) in the first measure, *f* in the second measure, and *f* in the third measure. A slur covers the first two measures of the bass line.

Handwritten musical notation for the third system. The treble clef staff contains a melodic line with notes across three measures. The bass clef staff contains a bass line with notes and dynamics: *f* (forte) in the first measure, *bp.* (pianissimo) in the second measure, and *f* in the third measure. A slur covers the first two measures of the bass line.

Handwritten musical notation for the fourth system. The treble clef staff contains a melodic line with notes and accidentals across three measures. The bass clef staff contains a bass line with notes and dynamics: *f* (forte) in the first measure, *f* in the second measure, and *f* in the third measure. A slur covers the first two measures of the bass line.

Handwritten musical notation for the first system. The treble staff contains a melodic line with quarter notes and slurs. The bass staff contains a chordal accompaniment with chords and slurs. The notation is in a key with one flat and a common time signature.

Handwritten musical notation for the second system. The treble staff continues the melodic line. The bass staff features chords and a bass line with quarter notes. The notation is in a key with one flat and a common time signature.

Handwritten musical notation for the third system. The treble staff continues the melodic line. The bass staff features a treble clef and a melodic line with slurs, indicating a change in the bass part's role.

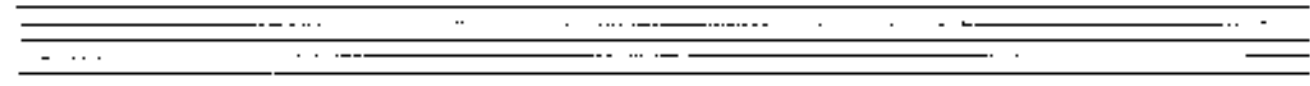
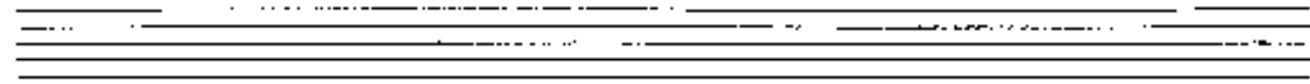
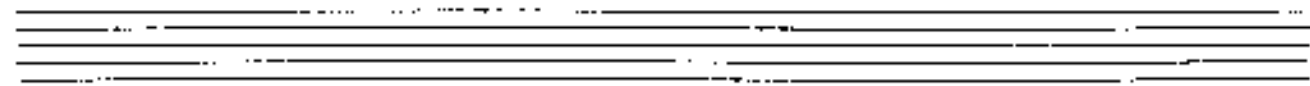
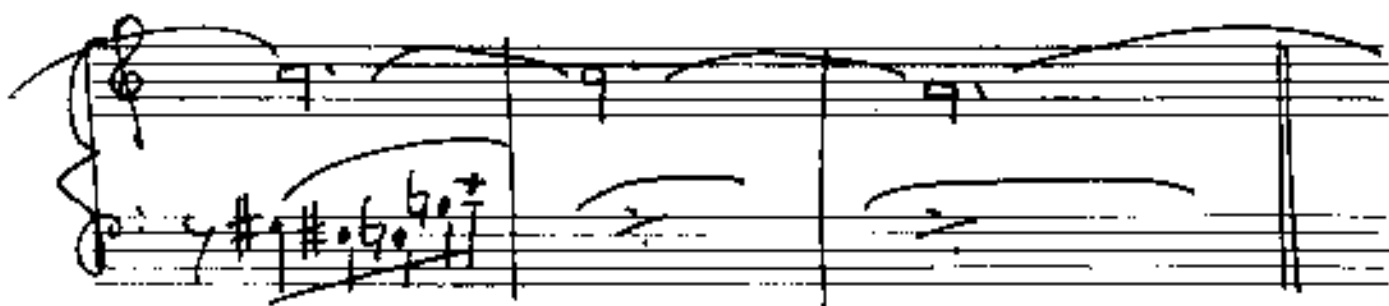
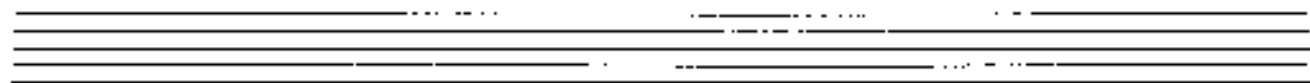
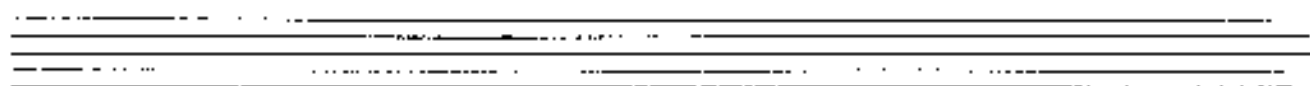
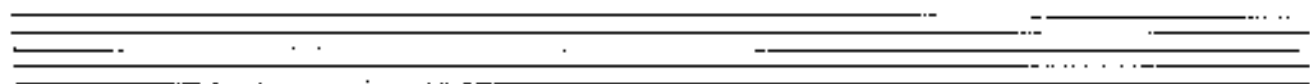
Handwritten musical notation for the fourth system. The treble staff continues the melodic line with slurs. The bass staff features a final chord and a double bar line. The notation is in a key with one flat and a common time signature.

Handwritten musical notation on a grand staff. The right hand (treble clef) plays a melodic line with a slur over two measures. The notes are G4, A4, B4, C5, B4, A4, G4, F4, E4, D4. The left hand (bass clef) plays a simple accompaniment with a slur over two measures, consisting of G3 and D3. The key signature has one sharp (F#) and the time signature is 4/4.

Handwritten musical notation on a grand staff. The right hand (treble clef) plays a melodic line with a slur over two measures. The notes are G4, A4, B4, C5, B4, A4, G4, F4, E4, D4. The left hand (bass clef) plays a simple accompaniment with a slur over two measures, consisting of G3 and D3. The key signature has one sharp (F#) and the time signature is 4/4.

Handwritten musical notation on a grand staff. The right hand (treble clef) plays a melodic line with a slur over two measures. The notes are G4, A4, B4, C5, B4, A4, G4, F4, E4, D4. The left hand (bass clef) plays a simple accompaniment with a slur over two measures, consisting of G3 and D3. The key signature has one sharp (F#) and the time signature is 4/4.

Four empty grand staves for musical notation.



Handwritten musical notation on a grand staff. The treble clef staff contains a melodic line with a slur over the first two measures and a fermata over the last two. The bass clef staff contains a bass line with various accidentals (sharps, flats, naturals) and a slur over the first two measures.

Handwritten musical notation on a grand staff. The treble clef staff has a single note with a fermata. The bass clef staff has a melodic line with a slur and various accidentals.

Handwritten musical notation on a grand staff. The treble clef staff has a melodic line with a slur and various accidentals. The bass clef staff has a bass line with a slur and various accidentals. There are circled 'C' markings at the end of each staff.

lento

Handwritten musical notation for the first system. It consists of two staves: a treble clef staff and a bass clef staff. The treble staff begins with a treble clef and a key signature of one flat (B-flat). The first measure contains a half note B-flat. The second measure contains a half note G. The third measure contains a half note F. The fourth measure contains a half note E. The fifth measure contains a half note D. The sixth measure contains a half note C. The bass staff begins with a bass clef and a key signature of one flat. The first measure contains a half note B-flat. The second measure contains a half note G. The third measure contains a half note F. The fourth measure contains a half note E. The fifth measure contains a half note D. The sixth measure contains a half note C. The dynamic marking *pp* is written in the first measure of the treble staff. The word *lento* is written above the first staff.

Handwritten musical notation for the second system. It consists of two staves: a treble clef staff and a bass clef staff. The treble staff begins with a treble clef and a key signature of one flat. The first measure contains a half note B-flat. The second measure contains a half note G. The third measure contains a half note F. The fourth measure contains a half note E. The fifth measure contains a half note D. The sixth measure contains a half note C. The bass staff begins with a bass clef and a key signature of one flat. The first measure contains a half note B-flat. The second measure contains a half note G. The third measure contains a half note F. The fourth measure contains a half note E. The fifth measure contains a half note D. The sixth measure contains a half note C.

Handwritten musical notation for the third system. It consists of two staves: a treble clef staff and a bass clef staff. The treble staff begins with a treble clef and a key signature of one flat. The first measure contains a half note B-flat. The second measure contains a half note G. The third measure contains a half note F. The fourth measure contains a half note E. The fifth measure contains a half note D. The sixth measure contains a half note C. The bass staff begins with a bass clef and a key signature of one flat. The first measure contains a half note B-flat. The second measure contains a half note G. The third measure contains a half note F. The fourth measure contains a half note E. The fifth measure contains a half note D. The sixth measure contains a half note C. The system concludes with a double bar line.

Tempo 1

Handwritten musical notation for the first system. The top staff is in treble clef with a key signature of one flat (B-flat) and a 3/4 time signature. It contains three measures of music, all under a long slur. The notes are: Measure 1: B4, A4, G4; Measure 2: F4, E4, D4; Measure 3: C4, B3, A3. The bottom staff contains three quarter notes with stems pointing up, corresponding to the notes in the top staff. Handwritten annotations 'p 3' and 'p 4' are written in the left margin.

Handwritten musical notation for the second system. The top staff is in treble clef with a key signature of one flat. It contains three measures of music under a long slur. The notes are: Measure 1: G4, F4, E4; Measure 2: D4, C4, B3; Measure 3: A3, G3, F3. The bottom staff contains three quarter notes with stems pointing up, corresponding to the notes in the top staff.

Handwritten musical notation for the third system. The top staff is in treble clef with a key signature of one flat. It contains three measures of music under a long slur. The notes are: Measure 1: E4, D4, C4; Measure 2: B3, A3, G3; Measure 3: F3, E3, D3. The bottom staff contains three quarter notes with stems pointing up, corresponding to the notes in the top staff.

Handwritten musical notation for the first system. The system consists of three staves. The top staff is in treble clef with a key signature of one flat (B-flat) and a 3/4 time signature. It contains a melody line with eighth and sixteenth notes, some beamed together. The middle staff is in bass clef and contains piano accompaniment with chords and a bass line with quarter notes. A large slur covers the entire system.

Handwritten musical notation for the second system. It continues the piece with similar notation to the first system, including a treble clef, one flat key signature, and 3/4 time signature. The melody and accompaniment are clearly visible across the three staves.

Handwritten musical notation for the third system. It concludes the piece with similar notation to the previous systems, including a treble clef, one flat key signature, and 3/4 time signature. The melody and accompaniment are clearly visible across the three staves.

Handwritten musical score system 1. It consists of three staves. The top staff is in treble clef and contains a melodic line with various accidentals (sharps, flats, naturals) and slurs. The middle staff is in bass clef and contains a single note with a fermata, marked with a forte dynamic (f). The bottom staff is in bass clef and contains a single note with a fermata.

Handwritten musical score system 2. It consists of three staves. The top staff is in treble clef and contains a melodic line with various accidentals and slurs. The middle staff is in bass clef and contains a single note with a fermata, marked with a forte dynamic (f). The bottom staff is in bass clef and contains a single note with a fermata, marked with a piano dynamic (p).

Handwritten musical score system 3. It consists of three staves. The top staff is in treble clef and contains a melodic line with various accidentals and slurs. The middle staff is in bass clef and contains a single note with a fermata. The bottom staff is in bass clef and contains a single note with a fermata.

gr. rit.

Handwritten musical notation for the first system. It features a treble clef, a key signature of one sharp (F#), and a common time signature. The notation includes a melody line with eighth and quarter notes, and a bass line with quarter notes. The system is enclosed in a large hand-drawn bracket.

Handwritten musical notation for the second system. It continues the piece with a treble clef and a key signature of one flat (Bb). The notation includes a melody line with quarter and eighth notes, and a bass line with quarter notes.

Handwritten musical notation for the third system. It features a treble clef and a key signature of one flat (Bb). The notation includes a melody line with quarter notes and a bass line with quarter notes. The system ends with a double bar line.

breit

Handwritten musical notation for the first system. The treble clef staff contains a melodic line with notes G4, A4, Bb4, Bb4, and A4, with a slur over the last three notes. The bass clef staff contains a bass line with notes G3, F3, and G3. The system is divided into three measures by vertical bar lines.

Handwritten musical notation for the second system. The treble clef staff continues the melodic line with notes G4, A4, Bb4, Bb4, and A4. The bass clef staff continues the bass line with notes G3, F3, and G3. The system is divided into three measures by vertical bar lines.

Handwritten musical notation for the third system. The treble clef staff contains notes G4, A4, and Bb4. The bass clef staff contains notes G3, F3, and G3. The system is divided into three measures by vertical bar lines.

Handwritten musical notation for the first system. The top staff is in treble clef with a key signature of one flat (B-flat) and a 4/4 time signature. The melody consists of a half note G4, a quarter note A4, a quarter note B4, and a half note C5, all under a slur. The bottom staff is in bass clef with a key signature of one flat and a brace. It contains a half note G2, a quarter note A2, a quarter note B2, and a half note C3.

Handwritten musical notation for the second system. The top staff is in treble clef with a key signature of two flats (B-flat, E-flat) and a 4/4 time signature. The melody consists of a half note G4, a quarter note A4, a quarter note B4, and a half note C5, all under a slur. The bottom staff is in bass clef with a key signature of two flats and a brace. It contains a half note G2, a quarter note A2, a quarter note B2, and a half note C3.

Handwritten musical notation for the third system. The top staff is in treble clef with a key signature of one flat (B-flat) and a 4/4 time signature. The melody consists of a half note G4, a quarter note A4, a quarter note B4, and a half note C5, all under a slur. The bottom staff is in bass clef with a key signature of one flat and a brace. It contains a half note G2, a quarter note A2, a quarter note B2, and a half note C3.

Allegro

Handwritten musical notation for the first system. It consists of a treble clef staff with a key signature of one sharp (F#) and a 2/4 time signature. The melody is written on a single staff with a slur over the first two measures. The piano accompaniment is on a grand staff with a bass clef and a 2/4 time signature.

Handwritten musical notation for the second system. It continues the melody and piano accompaniment from the first system. The treble clef staff shows a continuation of the melodic line with a slur. The piano accompaniment continues with a similar rhythmic pattern.

Handwritten musical notation for the third system, concluding the piece. The treble clef staff ends with a final chord. The piano accompaniment concludes with a final bass note.

(poco rit)

Handwritten musical score for the first system. It consists of three staves: a treble clef staff at the top, a middle staff with a soprano clef, and a bass clef staff at the bottom. The music is written in a key with one flat (B-flat) and a 3/4 time signature. The middle staff features a long, flowing melodic line with various ornaments and slurs. The bass staff contains a series of chords and single notes, providing a harmonic foundation for the melody.

oppositamente

Handwritten musical score for the second system. It continues the piece with the same three-staff format. The middle staff shows a continuation of the melodic line, with some notes marked with accents. The bass staff continues with chords and single notes, maintaining the harmonic structure established in the first system.

frei

Handwritten musical score for the third system. It begins with the word "frei" written above the treble clef staff. The music features several triplet markings (indicated by the number '3') over groups of notes in both the middle and bass staves. The notation becomes more complex, with many beamed notes and slurs. The bass staff continues with chords and single notes, supporting the more intricate melodic lines above.

(tristano)

Handwritten musical notation for the first system. It consists of three staves: treble, alto, and bass. The treble staff has a key signature of one sharp (F#) and a 4/4 time signature. It contains two measures of music, each with a half note and a whole note, both beamed together. The alto staff has a key signature of one sharp (F#) and contains two measures of music, each with a half note and a whole note, both beamed together. The bass staff has a key signature of one sharp (F#) and contains two measures of music, each with a half note and a whole note, both beamed together.

Handwritten musical notation for the second system. It consists of three staves: treble, alto, and bass. The treble staff has a key signature of one sharp (F#) and contains two measures of music, each with a triplet of eighth notes. The alto staff has a key signature of one sharp (F#) and contains two measures of music, each with a triplet of eighth notes. The bass staff has a key signature of one sharp (F#) and contains two measures of music, each with a triplet of eighth notes. The final measure of the system features a wavy scribble in the treble staff.

movements →

Handwritten musical notation for the third system. It consists of three staves: treble, alto, and bass. The treble staff has a key signature of one sharp (F#) and a 4/4 time signature. It contains two measures of music, each with a half note and a whole note, both beamed together. The alto staff has a key signature of one sharp (F#) and contains two measures of music, each with a half note and a whole note, both beamed together. The bass staff has a key signature of one sharp (F#) and contains two measures of music, each with a half note and a whole note, both beamed together.

(Buell) →

Handwritten musical score for piano, featuring complex chords and triplets. The notation includes a treble clef, a key signature of one sharp (F#), and a 3/4 time signature. The piece is marked with a piano (*p*) dynamic. The score consists of two measures, each containing dense chordal textures with triplets indicated by the number '3'. A large bracket spans across the second measure, and there are some scribbled-out notes in the lower register.

Handwritten musical score for piano, featuring a melodic line in the right hand and a complex chordal accompaniment in the left hand. The notation includes a treble clef, a key signature of one sharp (F#), and a 3/4 time signature. The piece is marked with a piano (*p*) dynamic. The score consists of two measures, each containing a melodic line in the right hand and a complex chordal accompaniment in the left hand. A large bracket spans across the second measure, and there are some scribbled-out notes in the lower register.

Handwritten musical score for piano, featuring a melodic line in the right hand and a complex chordal accompaniment in the left hand. The notation includes a treble clef, a key signature of one sharp (F#), and a 3/4 time signature. The piece is marked with a piano (*p*) dynamic. The score consists of two measures, each containing a melodic line in the right hand and a complex chordal accompaniment in the left hand. A large bracket spans across the second measure, and there are some scribbled-out notes in the lower register.

Handwritten musical notation for the first system. The system consists of three staves. The top staff has a treble clef and a key signature of one flat (B-flat). It contains a piecewise constant function graph with three segments. The first segment is a horizontal line at a high pitch level. The second segment is a horizontal line at a medium pitch level. The third segment is a horizontal line at a low pitch level. The middle staff contains a melodic line with a series of notes, starting with a quarter note and followed by eighth notes. The bottom staff contains a bass line with a single quarter note.

Handwritten musical notation for the second system. The system consists of three staves. The top staff has a treble clef and a key signature of one flat (B-flat). It contains a piecewise constant function graph with three segments. The first segment is a horizontal line at a high pitch level. The second segment is a horizontal line at a medium pitch level. The third segment is a horizontal line at a low pitch level. The middle staff contains a melodic line with a series of notes, starting with a quarter note and followed by eighth notes. The bottom staff contains a bass line with a single quarter note.

Handwritten musical notation for the third system. The system consists of three staves. The top staff has a treble clef and a key signature of one flat (B-flat). It contains a piecewise constant function graph with three segments. The first segment is a horizontal line at a high pitch level. The second segment is a horizontal line at a medium pitch level. The third segment is a horizontal line at a low pitch level. The middle staff contains a melodic line with a series of notes, starting with a quarter note and followed by eighth notes. The bottom staff contains a bass line with a single quarter note.

Handwritten musical score system 1. It consists of three staves. The top staff has a treble clef and contains two measures of music with notes and rests, connected by a long slur. The middle staff has a treble clef and contains two measures of music with dense, overlapping notes. The bottom staff has a bass clef and contains two measures of music with notes and rests.

Handwritten musical score system 2. It consists of three staves. The top staff has a treble clef and contains two measures of music with notes and rests, connected by a long slur. The middle staff has a treble clef and contains two measures of music with notes and rests. The bottom staff has a bass clef and contains two measures of music with notes and rests.

Handwritten musical score system 3. It consists of three staves. The top staff has a treble clef and contains two measures of music with notes and rests, connected by a long slur. The middle staff has a treble clef and contains two measures of music with notes and rests. The bottom staff has a bass clef and contains two measures of music with notes and rests.

frei *sehr*
 bewegt

Handwritten musical score for the first system. It consists of two staves, treble and bass clef. The treble staff contains a dense, rapid melodic line with many notes, while the bass staff is mostly empty with a few notes at the beginning.

Colla
M

Handwritten musical score for the second system. It consists of two staves, treble and bass clef. The treble staff has a few notes and some markings, including a sharp sign and a wavy line. The bass staff has a few notes at the beginning.

Handwritten musical score for the third system. It consists of two staves, treble and bass clef. The treble staff contains a dense, rapid melodic line with many notes, while the bass staff is mostly empty with a few notes at the beginning.

Handwritten musical notation for the first system. It consists of a treble clef, a common time signature (C), and several notes with slurs and ties. The notes are mostly quarter and eighth notes, with some beamed together. There are also some handwritten annotations and a small '1' below a note.

Handwritten musical notation for the second system. It features a treble clef, a common time signature (C), and a dense, rapid sequence of notes, possibly representing a tremolo or a fast scale. There are slurs and ties above the notes. To the right of the main notation, there are handwritten notes and symbols, including a common time signature (C) and some sharp signs (#).

Handwritten musical notation for the third system. It features a treble clef, a common time signature (C), and a dense, rapid sequence of notes, similar to the second system. There are slurs and ties above the notes. To the right of the main notation, there are handwritten notes and symbols, including a common time signature (C) and some sharp signs (#).

so ruhig als möglich

Handwritten musical notation for the first system. It consists of two staves. The top staff is in treble clef and the bottom staff is in bass clef. The time signature is 4/8. The dynamic marking is *pp*. The notation includes various chords and melodic lines with accidentals (sharps, flats, and naturals).

Handwritten musical notation for the second system. It consists of two staves. The notation continues with similar chords and melodic lines, including accidentals.

Handwritten musical notation for the third system. It consists of two staves. The dynamic marking changes to *p*. The notation shows further melodic development and chordal structures.

Handwritten musical notation for the fourth system. It consists of two staves. The notation concludes the piece with a final cadence, including a double bar line and repeat signs.

Ballade (sehr breit ausladend)

Handwritten musical notation for the first system. It features a treble clef, a key signature of one flat (B-flat), and a 3/4 time signature. The notation includes a melodic line with a slur and a bass line with a long note.

Handwritten musical notation for the second system. It features a treble clef, a key signature of one flat (B-flat), and a 3/4 time signature. The notation includes a melodic line with a slur and a bass line with a long note.

Handwritten musical notation for the third system. It features a treble clef, a key signature of one flat (B-flat), and a 3/4 time signature. The notation includes a melodic line with a slur and a bass line with a long note.

Handwritten musical score for the first system. It consists of a treble clef staff and a grand staff (piano accompaniment). The treble staff contains a melodic line with several notes, some of which are beamed together and have slurs above them. The piano accompaniment is written in a grand staff with treble and bass clefs, featuring chords and moving lines.

(pizz.)

Handwritten musical score for the second system. It consists of a treble clef staff and a grand staff. The treble staff has a melodic line with notes and slurs. The piano accompaniment includes chords and moving lines in both hands.

Handwritten musical score for the third system. It consists of a treble clef staff and a grand staff. The treble staff has a melodic line with notes and slurs. The piano accompaniment includes chords and moving lines in both hands.

Handwritten musical notation on a grand staff. The top staff has a treble clef and a common time signature 'C'. The middle staff has a treble clef and contains a sequence of notes: G4, A4, Bb4, Ab4, G4, F4, E4, D4, C4. The bottom staff has a bass clef and contains a few notes: C3, D3, E3. A large slur covers the top two staves.

Handwritten musical notation on a grand staff. The top staff has a treble clef and a common time signature 'C'. The middle staff has a treble clef and contains notes: G4, A4, Bb4, A4, G4, F4, E4, D4, C4. The bottom staff has a bass clef and contains notes: C3, D3, E3. A vertical bar line is present. To the right of the bar line, there is handwritten text: "Karl", "1969", and a signature.