

Notenheft

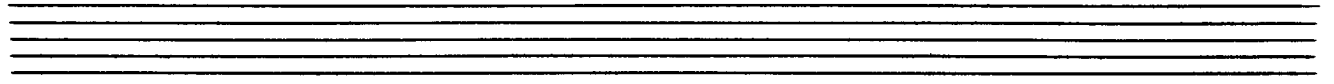
Improvisation über das Lied,

(Die dunkle Wolke) (1646)

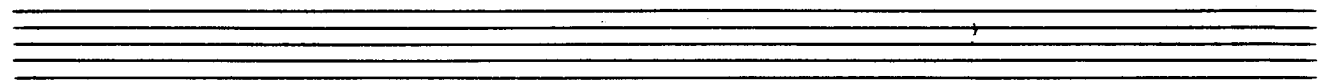
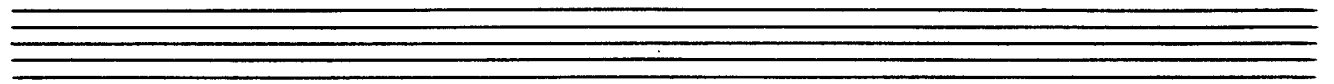
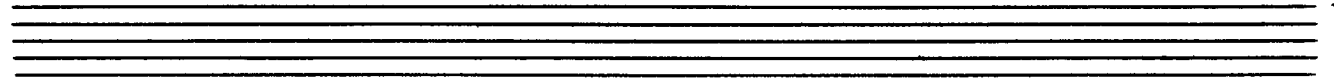
für Orgel 1969

Adolf Scherbaum

(Es geht ein' dunkle Wolk' herein,
mich deucht, es wird ein Regen sein,
ein Regen aus den Wolken —,
wohl in das grüne Gras) —



Flüchtig flüchtig



Handwritten musical notation for the first system. The treble staff contains four measures of music with notes and accidentals (flats and sharps). The bass staff contains four measures of music with notes and accidentals, including a double sharp.

Handwritten musical notation for the second system. The treble staff contains four measures of music with notes and accidentals. The bass staff contains four measures of music with notes and accidentals, including a double sharp.

Handwritten musical notation for the third system. The treble staff contains four measures of music with notes and accidentals. The bass staff contains four measures of music with notes and accidentals, including a double sharp.

Handwritten musical notation for the fourth system. The treble staff contains four measures of music with notes and accidentals. The bass staff contains four measures of music with notes and accidentals, including a double sharp.

Handwritten musical notation for the first system. The treble staff contains a melodic line with notes and accidentals (flats and naturals). The bass staff contains a bass line with notes and accidentals. A large slur covers both staves across the entire system.

Handwritten musical notation for the second system. The treble staff contains a melodic line with notes and accidentals. The bass staff contains a bass line with notes and accidentals. A large slur covers both staves across the entire system.

Handwritten musical notation for the third system. The treble staff contains a melodic line with notes and accidentals. The bass staff contains a bass line with notes and accidentals. A large slur covers both staves across the entire system.

Handwritten musical notation for the fourth system. The treble staff contains a melodic line with notes and accidentals. The bass staff contains a bass line with notes and accidentals. A large slur covers both staves across the entire system.

Handwritten musical notation for the first system. The treble clef staff contains a melodic line with notes: G4, A4, B4, C5, B4, A4, G4, F4, E4, D4. The bass clef staff contains a bass line with notes: G2, A2, B2, C3, D3, E3, F3, G3, A3, B3. Dynamics include *bp.* (pianissimo) and *79.* (fortissimo).

Handwritten musical notation for the second system. The treble clef staff contains a melodic line with notes: G4, A4, B4, C5, B4, A4, G4, F4, E4, D4. The bass clef staff contains a bass line with notes: G2, A2, B2, C3, D3, E3, F3, G3, A3, B3.

Handwritten musical notation for the third system. The treble clef staff contains a melodic line with notes: G4, A4, B4, C5, B4, A4, G4, F4, E4, D4. The bass clef staff contains a bass line with notes: G2, A2, B2, C3, D3, E3, F3, G3, A3, B3. Dynamics include *bp.* (pianissimo) and *9.* (fortissimo).

Handwritten musical notation for the fourth system. The treble clef staff contains a melodic line with notes: G4, A4, B4, C5, B4, A4, G4, F4, E4, D4. The bass clef staff contains a bass line with notes: G2, A2, B2, C3, D3, E3, F3, G3, A3, B3. Dynamics include *79.* (fortissimo) and *f.* (forte).

Handwritten musical notation for the first system. The treble staff contains a melodic line with quarter notes and slurs. The bass staff contains a harmonic accompaniment with chords and slurs.

Handwritten musical notation for the second system. The treble staff continues the melodic line. The bass staff features a more complex accompaniment with slurs and a fermata over the final measure.

Handwritten musical notation for the third system. The treble staff has a melodic line with slurs. The bass staff has a more active accompaniment with slurs and a fermata over the final measure.

Handwritten musical notation for the fourth system. The treble staff has a melodic line with slurs and a fermata over the final measure. The bass staff has a simple accompaniment with slurs and a fermata over the final measure.

Handwritten musical notation for the first system. It consists of two staves: a treble clef staff and a bass clef staff. The treble staff contains a melodic line with notes and accidentals (flats and sharps) across two measures. A long slur covers the entire system. The bass staff contains a few notes and rests.

Handwritten musical notation for the second system. It consists of two staves: a treble clef staff and a bass clef staff. The treble staff contains a melodic line with notes and accidentals (flats and sharps) across two measures. A long slur covers the entire system. The bass staff contains a few notes and rests.

Handwritten musical notation for the third system. It consists of two staves: a treble clef staff and a bass clef staff. The treble staff contains a melodic line with notes and accidentals (flats and sharps) across two measures. A long slur covers the entire system. The bass staff contains a few notes and rests.

The first system of handwritten musical notation consists of two staves. The upper staff is in treble clef and contains a melodic line with a slur over two measures. The notes are: G4, A4 (sharped), B4, C5, D5, E5, F5, G5, A5, B5, C6, D6. The lower staff is in bass clef and contains a bass line with a slur over two measures, consisting of two whole notes: G2 and G3.

The second system of handwritten musical notation consists of two staves. The upper staff is in treble clef and contains a melodic line with a slur over two measures. The notes are: G4, A4 (sharped), B4, C5, D5, E5, F5, G5, A5, B5, C6, D6. The lower staff is in bass clef and contains a bass line with a slur over two measures, consisting of two whole notes: G2 and G3.

The third system of handwritten musical notation consists of two staves. The upper staff is in treble clef and contains a melodic line with a slur over two measures. The notes are: G4, A4 (sharped), B4, C5, D5, E5, F5, G5, A5, B5, C6, D6. The lower staff is in bass clef and contains a bass line with a slur over two measures, consisting of two whole notes: G2 and G3.

Handwritten musical notation for the first system. The treble clef staff contains a melodic line with a slur over three measures, each starting with a quarter note (G, A, B) and a fermata. The bass clef staff contains a chordal accompaniment with a slur over three measures, each starting with a quarter note (F, G, A) and a fermata. The key signature has one flat (B-flat).

Handwritten musical notation for the second system. The treble clef staff continues the melodic line with a slur over three measures, each starting with a quarter note (C, D, E) and a fermata. The bass clef staff continues the chordal accompaniment with a slur over three measures, each starting with a quarter note (B, C, D) and a fermata. The key signature has one flat (B-flat).

Handwritten musical notation for the third system. The treble clef staff continues the melodic line with a slur over three measures, each starting with a quarter note (F, G, A) and a fermata. The bass clef staff continues the chordal accompaniment with a slur over three measures, each starting with a quarter note (E, F, G) and a fermata. The piece concludes with a double bar line at the end of the third measure. The key signature has one flat (B-flat).

Handwritten musical notation for the first system. The treble staff contains a melodic line with notes and accidentals, including a sharp sign. The bass staff contains a bass line with notes and accidentals, including a sharp sign. The system is divided into three measures.

Handwritten musical notation for the second system. The treble staff contains a melodic line with notes and accidentals, including a sharp sign. The bass staff contains a bass line with notes and accidentals, including a sharp sign. The system is divided into three measures.

Handwritten musical notation for the third system. The treble staff contains a melodic line with notes and accidentals, including a sharp sign. The bass staff contains a bass line with notes and accidentals, including a sharp sign. The system is divided into three measures. There are handwritten markings 'C' above the treble staff and 'C' below the bass staff at the end of the system.

Canto

Handwritten musical notation for the first system. It consists of two staves. The upper staff is in treble clef and contains a melodic line with notes and slurs. The lower staff is in bass clef and contains a harmonic accompaniment with chords and slurs. A dynamic marking 'pp' is present in the first measure of the lower staff.

Handwritten musical notation for the second system. It consists of two staves. The upper staff continues the melodic line with notes and slurs. The lower staff features complex chordal structures with many accidentals and slurs.

Handwritten musical notation for the third system. It consists of two staves. The upper staff continues the melodic line. The lower staff concludes the piece with a double bar line. The notation includes various accidentals and slurs.

Tempo 1

Handwritten musical notation for the first system, measures 1-3. The system consists of three staves. The top staff is in treble clef with a key signature of one flat (B-flat). It contains three measures of music: the first measure has a quarter note B-flat, a quarter note A, and a quarter note G; the second measure has a quarter note F, a quarter note E, and a quarter note D; the third measure has a quarter note C, a quarter note B, and a quarter note A. The middle staff is in alto clef and contains three whole rests. The bottom staff is in bass clef and contains three quarter notes: G, F, and E, each with a slur underneath. To the left of the first measure, there are handwritten markings 'p 3' and 'p 4'.

Handwritten musical notation for the second system, measures 4-6. The system consists of three staves. The top staff is in treble clef with a key signature of one flat. It contains three measures: the first measure has a quarter note B-flat, a quarter note A, and a quarter note G; the second measure has a quarter note F, a quarter note E, and a quarter note D; the third measure has a quarter note C, a quarter note B, and a quarter note A. The middle staff is in alto clef and contains three whole notes: G, F, and E. The bottom staff is in bass clef and contains three quarter notes: G, F, and E, each with a slur underneath.

Handwritten musical notation for the third system, measures 7-9. The system consists of three staves. The top staff is in treble clef with a key signature of one flat. It contains three measures: the first measure has a quarter note B-flat, a quarter note A, and a quarter note G; the second measure has a quarter note F, a quarter note E, and a quarter note D; the third measure has a quarter note C, a quarter note B, and a quarter note A. The middle staff is in alto clef and contains three whole notes: G, F, and E. The bottom staff is in bass clef and contains three quarter notes: G, F, and E, each with a slur underneath.

Handwritten musical notation for the first system. The top staff is in treble clef with a key signature of one flat (B-flat). It contains three measures of eighth-note runs. The middle staff is in bass clef and contains three measures of chords, with a '3' written above the first measure. The bottom staff is in bass clef and contains three measures of quarter notes with a slur over them.

Handwritten musical notation for the second system. The top staff is in treble clef with a key signature of one flat. It contains three measures of eighth-note runs. The middle staff is in bass clef and contains three measures of chords, with a 'b' above the first measure. The bottom staff is in bass clef and contains three measures of quarter notes with a slur over them.

Handwritten musical notation for the third system. The top staff is in treble clef with a key signature of one flat. It contains three measures of eighth-note runs. The middle staff is in bass clef and contains three measures of chords, with a 'f' above the first measure. The bottom staff is in bass clef and contains three measures of quarter notes with a slur over them.

Handwritten musical score for the first system, featuring three staves with treble, alto, and bass clefs. The top staff has a treble clef and contains a melodic line with various accidentals. The middle staff has an alto clef and contains a sustained chord marked 'f.'. The bottom staff has a bass clef and contains a sustained bass note marked 'q.'.

Handwritten musical score for the second system, featuring three staves with treble, alto, and bass clefs. The top staff has a treble clef and contains a melodic line with various accidentals. The middle staff has an alto clef and contains a sustained chord marked 'f.' in the first measure and 'bp.' in the second and third measures. The bottom staff has a bass clef and contains a sustained bass note marked 'q.'.

Handwritten musical score for the third system, featuring three staves with treble, alto, and bass clefs. The top staff has a treble clef and contains a melodic line with various accidentals. The middle staff has an alto clef and contains a sustained chord marked 'q.' in the first measure and 'q.' in the second and third measures. The bottom staff has a bass clef and contains a sustained bass note marked 'q.'.

gr. rit...

Handwritten musical score for the first system. It consists of a treble clef staff and a bass clef staff. The treble staff begins with a treble clef, a key signature of one flat (B-flat), and a common time signature (C). It contains several notes, including a half note G4, a quarter note A4, and a quarter note B4, followed by a series of horizontal lines representing sustained notes. The bass staff contains a few notes, including a half note G2 and a quarter note A2. Dynamic markings include 'f' and 'ff'. There are also some handwritten annotations like 'C: 000' and 'p: 000'.

Handwritten musical score for the second system. It continues the notation from the first system. The treble staff has a treble clef, a key signature of one flat, and a common time signature. It features notes and horizontal lines, with dynamic markings 'f' and 'ff'. Handwritten annotations include 'C: 000', 'p: 000', and 'C: 000'.

Handwritten musical score for the third system. It consists of a treble clef staff and a bass clef staff. The treble staff has a treble clef, a key signature of one flat, and a common time signature. It contains some initial notation, including a half note G4 and a quarter note A4, followed by horizontal lines. The bass staff is mostly empty.

breit

Handwritten musical notation for the first system. It consists of a treble clef staff and a bass clef staff. The treble staff contains a melodic line with notes G4, A4, Bb4, C5, D5, E5, and F5, with a fermata over the final note. The bass staff contains a bass line with notes G2, A2, Bb2, and C3, with a fermata over the final note. There are some handwritten annotations like '77' and '8' in the bass staff.

Handwritten musical notation for the second system. It consists of a treble clef staff and a bass clef staff. The treble staff contains a melodic line with notes G4, A4, Bb4, C5, D5, E5, and F5, with a fermata over the final note. The bass staff contains a bass line with notes G2, A2, Bb2, and C3, with a fermata over the final note.

Handwritten musical notation for the third system. It consists of a treble clef staff and a bass clef staff. The treble staff contains a melodic line with notes G4, A4, Bb4, C5, D5, E5, and F5, with a fermata over the final note. The bass staff contains a bass line with notes G2, A2, Bb2, and C3, with a fermata over the final note.

Handwritten musical score for the first system. It consists of three staves. The top staff has a treble clef and contains a melodic line with a long slur over two measures. The middle staff has a bass clef and contains a more complex melodic line with various note values and rests. The bottom staff has a bass clef and contains a simple accompaniment line with a few notes and rests. There are some handwritten annotations and corrections throughout the system.

Handwritten musical score for the second system. It consists of three staves. The top staff has a treble clef and contains a melodic line with a long slur over two measures. The middle staff has a bass clef and contains a more complex melodic line with various note values and rests. The bottom staff has a bass clef and contains a simple accompaniment line with a few notes and rests. There are some handwritten annotations and corrections throughout the system.

Handwritten musical score for the third system. It consists of three staves. The top staff has a treble clef and contains a melodic line with a long slur over two measures. The middle staff has a bass clef and contains a more complex melodic line with various note values and rests. The bottom staff has a bass clef and contains a simple accompaniment line with a few notes and rests. There are some handwritten annotations and corrections throughout the system.

steigen

Handwritten musical notation for the first system. It consists of a treble clef staff and a bass clef staff. The treble staff begins with a key signature of one sharp (F#) and contains a melodic line with a long slur. The bass staff contains a bass line with notes and rests. The system concludes with a double bar line.

Handwritten musical notation for the second system. It continues the piece with treble and bass staves. The treble staff has a melodic line with a slur. The bass staff has a bass line. The system concludes with a double bar line.

Handwritten musical notation for the third system. It continues the piece with treble and bass staves. The treble staff has a melodic line with a slur. The bass staff has a bass line. The system concludes with a double bar line.

(poco rit)

Handwritten musical score for the first system, featuring a grand staff with treble, alto, and bass clefs. The music includes a long melodic line in the treble clef and accompaniment in the other two staves.

passionato

Handwritten musical score for the second system, continuing the grand staff notation with various musical notations and dynamics.

Handwritten musical score for the third system, marked "frei", featuring complex rhythmic patterns and triplets.

(tristesse)

Handwritten musical score for the first system. It consists of three staves. The top staff has a treble clef and a key signature of one sharp (F#). The middle staff has a treble clef and a key signature of two sharps (F#, C#). The bottom staff has a bass clef and a key signature of one flat (Bb). The music is written in a 4/4 time signature. The first two measures of each staff are connected by a slur. The first measure of each staff contains a half note, and the second measure contains a half note. The notes in the first measure are G4, A4, B4, and C5. The notes in the second measure are G4, F#4, E4, and D4. The third measure of each staff contains a half note, and the fourth measure contains a half note. The notes in the third measure are G4, F#4, E4, and D4. The notes in the fourth measure are G4, F#4, E4, and D4.

frei

Handwritten musical score for the second system. It consists of three staves. The top staff has a treble clef and a key signature of one sharp (F#). The middle staff has a bass clef and a key signature of one sharp (F#). The bottom staff has a bass clef and a key signature of one sharp (F#). The music is written in a 4/4 time signature. The first two measures of each staff are connected by a slur. The first measure of each staff contains a half note, and the second measure contains a half note. The notes in the first measure are G4, A4, B4, and C5. The notes in the second measure are G4, F#4, E4, and D4. The third measure of each staff contains a half note, and the fourth measure contains a half note. The notes in the third measure are G4, F#4, E4, and D4. The notes in the fourth measure are G4, F#4, E4, and D4. The bottom staff features a wavy line in the final measure.

normaux →

Handwritten musical score for the third system. It consists of three staves. The top staff has a treble clef and a key signature of one sharp (F#). The middle staff has a bass clef and a key signature of one sharp (F#). The bottom staff has a bass clef and a key signature of one sharp (F#). The music is written in a 4/4 time signature. The first two measures of each staff are connected by a slur. The first measure of each staff contains a half note, and the second measure contains a half note. The notes in the first measure are G4, A4, B4, and C5. The notes in the second measure are G4, F#4, E4, and D4. The third measure of each staff contains a half note, and the fourth measure contains a half note. The notes in the third measure are G4, F#4, E4, and D4. The notes in the fourth measure are G4, F#4, E4, and D4.

(Cued) →

frei

Handwritten musical notation for the first system. It consists of a treble clef staff and a bass clef staff. The treble staff contains several chords, many of which are marked with a '3' above them, indicating triplets. The bass staff contains a few notes and rests. The notation is somewhat sketchy and appears to be a working draft.

Prestissimo

Handwritten musical notation for the second system. It consists of a treble clef staff and a bass clef staff. The treble staff is filled with a dense, rapid sequence of chords, creating a textured effect. The bass staff has a few notes and rests. The notation is very dense and appears to be a working draft.

Handwritten musical notation for the third system. It consists of a treble clef staff and a bass clef staff. The treble staff is filled with a dense, rapid sequence of chords, similar to the second system. The bass staff has a few notes and rests. The notation is very dense and appears to be a working draft.

Handwritten musical notation for the first system, featuring a treble clef, a key signature of one flat, and a 3/4 time signature. The music consists of three staves: the top staff has a melodic line with a slur and a fermata; the middle staff has a dense, sixteenth-note arpeggiated texture; the bottom staff has a simple bass line with two half notes.

Handwritten musical notation for the second system, continuing the piece. It features a treble clef, a key signature of one flat, and a 3/4 time signature. The music consists of three staves: the top staff has a melodic line with a slur and a fermata; the middle staff has a dense, sixteenth-note arpeggiated texture; the bottom staff has a simple bass line with two half notes.

Handwritten musical notation for the third system, continuing the piece. It features a treble clef, a key signature of one flat, and a 3/4 time signature. The music consists of three staves: the top staff has a melodic line with a slur and a fermata; the middle staff has a dense, sixteenth-note arpeggiated texture; the bottom staff has a simple bass line with two half notes.

frei *sehr bewegt*

The first system of the handwritten musical score consists of two staves. The upper staff is in treble clef and contains a very dense, rapid melodic line that ascends from a middle register to a high register, ending with a sharp final note. The lower staff is in bass clef and contains a simple, low-register line, possibly a bass line or accompaniment, with a few notes and rests.

coll.

The second system of the handwritten musical score consists of two staves. The upper staff is in treble clef and contains a few notes and rests, with the word "coll." written above it. The lower staff is in bass clef and contains a simple, low-register line, possibly a bass line or accompaniment, with a few notes and rests.

The third system of the handwritten musical score consists of two staves. The upper staff is in treble clef and contains a very dense, rapid melodic line that ascends from a middle register to a high register, ending with a sharp final note. The lower staff is in bass clef and contains a simple, low-register line, possibly a bass line or accompaniment, with a few notes and rests.

Handwritten musical notation for the first system. It features a treble clef, a common time signature (C), and a melodic line with a slur and a fermata. The notation is somewhat sketchy and includes some handwritten annotations.

Handwritten musical notation for the second system. It features a treble clef, a common time signature (C), and a dense, textured passage with many notes. The notation is very dense and includes some handwritten annotations.

Handwritten musical notation for the third system. It features a treble clef, a common time signature (C), and a dense, textured passage with many notes. The notation is very dense and includes some handwritten annotations.

so ruhig als möglich

Handwritten musical notation for the first system. It consists of two staves: a treble clef staff and a bass clef staff. The time signature is 4/8. The dynamic marking is *pp*. The first measure contains a quarter note G4 with a flat, followed by a quarter note B4 with a flat, and a quarter note D5 with a flat. The second measure contains a quarter note D5 with a flat, a quarter note C5 with a sharp, and a quarter note B4 with a flat. The third measure contains a quarter note G4 with a flat, a quarter note F4 with a flat, and a quarter note E4 with a flat. A fermata is placed over the final measure.

Handwritten musical notation for the second system. It consists of two staves: a treble clef staff and a bass clef staff. The first measure contains a quarter note G4 with a flat, followed by a quarter note B4 with a flat, and a quarter note D5 with a flat. The second measure contains a quarter note D5 with a flat, a quarter note C5 with a sharp, and a quarter note B4 with a flat. The third measure contains a quarter note G4 with a flat, a quarter note F4 with a flat, and a quarter note E4 with a flat. A fermata is placed over the final measure.

Handwritten musical notation for the third system. It consists of two staves: a treble clef staff and a bass clef staff. The first measure contains a quarter note G4 with a flat, followed by a quarter note B4 with a flat, and a quarter note D5 with a flat. The second measure contains a quarter note D5 with a flat, a quarter note C5 with a sharp, and a quarter note B4 with a flat. The third measure contains a quarter note G4 with a flat, a quarter note F4 with a flat, and a quarter note E4 with a flat. A fermata is placed over the final measure.

Handwritten musical notation for the fourth system. It consists of two staves: a treble clef staff and a bass clef staff. The first measure contains a quarter note G4 with a flat, followed by a quarter note B4 with a flat, and a quarter note D5 with a flat. The second measure contains a quarter note D5 with a flat, a quarter note C5 with a sharp, and a quarter note B4 with a flat. The third measure contains a quarter note G4 with a flat, a quarter note F4 with a flat, and a quarter note E4 with a flat. A fermata is placed over the final measure.

Volliwerk (sehr breit ausladend)

Handwritten musical score for the first system. It consists of three staves: a treble clef staff, a grand staff (treble and bass clefs), and a bass clef staff. The treble staff contains notes with accidentals and slurs, including a sharp sign above a note. The grand staff shows a wide interval in the upper voice and a lower voice with notes and slurs. The bass staff has a single note with a slur. The system is divided into three measures by vertical bar lines.

Handwritten musical score for the second system. It consists of three staves: a treble clef staff, a grand staff, and a bass clef staff. The treble staff has notes with accidentals and slurs. The grand staff shows a wide interval in the upper voice and a lower voice with notes and slurs. The bass staff has a single note with a slur. The system is divided into three measures by vertical bar lines.

Handwritten musical score for the third system. It consists of three staves: a treble clef staff, a grand staff, and a bass clef staff. The treble staff has notes with accidentals and slurs. The grand staff shows a wide interval in the upper voice and a lower voice with notes and slurs. The bass staff has a single note with a slur. The system is divided into three measures by vertical bar lines.

Handwritten musical score for the first system. The treble clef staff contains three measures of music with notes and chords. Above the first measure is a chord symbol $b \frac{9}{9} :$, above the second is $\frac{9}{9} :$, and above the third is $\# \frac{9}{9} :$. The bass clef staff contains a single note in the first measure, followed by a long horizontal line with a slur over it, and another single note in the third measure.

Handwritten musical score for the second system. The treble clef staff contains three measures of music with notes and chords. Above the first measure is a chord symbol $b \frac{9}{9} :$, above the second is $\frac{9}{9} :$, and above the third is $\frac{9}{9} :$. The bass clef staff contains a single note in the first measure, followed by a long horizontal line with a slur over it, and another single note in the third measure.

Handwritten musical score for the third system. The treble clef staff contains three measures of music with notes and chords. Above the first measure is a chord symbol $\frac{9}{9} :$, above the second is $\frac{9}{9} :$, and above the third is $\frac{9}{9} :$. The bass clef staff contains a single note in the first measure, followed by a long horizontal line with a slur over it, and another single note in the third measure.

Handwritten musical score for the first system, consisting of three staves. The top staff contains a melodic line with notes and rests, some with slurs. The middle and bottom staves contain accompaniment with notes and rests, also featuring slurs.

(gr. rit)

Handwritten musical score for the second system, consisting of three staves. The top staff has notes with slurs. The middle and bottom staves have notes and rests, with some notes marked with a colon (:).

Handwritten musical score for the third system, consisting of three staves. The top staff has notes with slurs. The middle and bottom staves have notes and rests, with some notes marked with a colon (:).

Handwritten musical notation for the first system. It consists of three staves. The top staff has a treble clef and a common time signature (C). The middle staff contains a melodic line with notes and accidentals (flats and sharps). The bottom staff has a bass clef and a common time signature. A large, sweeping line arches over the entire system, ending with a fermata-like symbol.

Handwritten musical notation for the second system. It consists of three staves. The top staff has a treble clef and a common time signature. The middle staff contains notes and accidentals. The bottom staff has a bass clef and a common time signature. The tempo marking "Largo" is written above the middle staff. A thick vertical double bar line is drawn across the system. To the right of the bar line, the name "Karl" and the year "1969" are written. Below the bar line, there is a signature that appears to be "Karl" or "Karl 1969".

Four empty musical staves, each consisting of five horizontal lines, arranged vertically.