

$\frac{7}{1}$ Teile im alten
Stil

über ein Thema

von
Johann Sebastian Bach
1709

Notenheft Adolf Scherbaum

Teil [1]

(1) Adagio

(als Abschlus (wieder Teil [1]) aber (voll Werk 777)

(2. + gut)

(letzte + großes gut ... und
letzten Taket lange r.)

Teil 2

Handwritten musical notation for the first system. It consists of a grand staff with a treble clef and a bass clef. The music is written in 6/8 time. The first measure is marked with a circled '1' above the staff and a circled 'p' below the bass staff. The melody in the treble clef features a series of eighth notes and sixteenth notes, with a slur over the first two measures. The bass staff contains a simple accompaniment of chords and single notes.

Handwritten musical notation for the second system. It continues the piece with a grand staff. The treble clef part has a complex melodic line with many sixteenth notes and slurs. The bass clef part provides harmonic support with chords and moving lines.

Handwritten musical notation for the third system. It features a grand staff with a treble clef and a bass clef. A large, hand-drawn crescendo hairpin is positioned above the treble staff, indicating a gradual increase in volume. The melody continues with intricate rhythmic patterns.

Two sets of empty musical staves at the bottom of the page, one for the treble clef and one for the bass clef.

Handwritten musical notation on a grand staff. The right hand features a melodic line with slurs and a fermata over the final measure. The left hand has a few notes and rests.

Handwritten musical notation on a grand staff. The right hand has a complex melodic line with slurs and a fermata. The left hand has a few notes and rests.

Handwritten musical notation on a grand staff. The right hand has a melodic line with slurs and a fermata. The left hand has a few notes and rests.

Four sets of empty grand staves.

(2. x part)

Teil 3

(frei) bewegt

Handwritten musical notation for the first system. It consists of two staves. The upper staff is in treble clef and contains several chords and notes, with two '77' markings above it. The lower staff is in bass clef and contains a melodic line with slurs and ties.

Handwritten musical notation for the second system. It consists of two staves. The upper staff is in treble clef and contains a melodic line with slurs and ties. The lower staff is in bass clef and contains a melodic line with slurs and ties.

Handwritten musical notation for the third system. It consists of two staves. The upper staff is in treble clef and contains a melodic line with slurs and ties. The lower staff is in bass clef and contains a melodic line with slurs and ties.

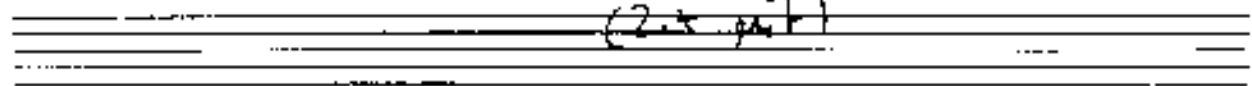
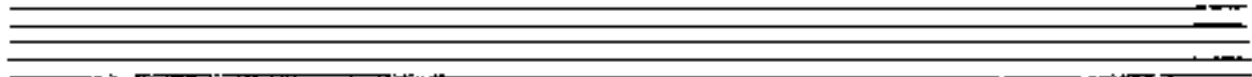
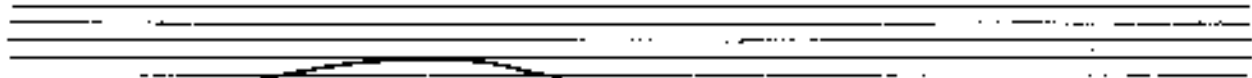
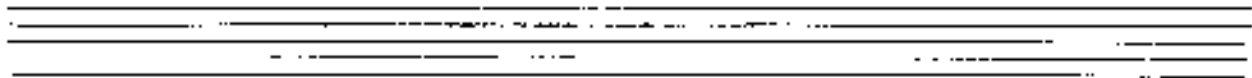
Two empty musical staves, one in treble clef and one in bass clef, for the fourth system.

Handwritten musical notation on a grand staff. The right hand has a melodic line with a slur and a '2' above it. The left hand has a bass line with a slur and a '2' below it. The music is in treble and bass clefs.

Handwritten musical notation on a grand staff. The right hand has a melodic line with a slur and an 'M' above it. The left hand has a bass line with a slur and an 'M' below it. The music is in treble and bass clefs.

Handwritten musical notation on a grand staff. The right hand has a melodic line with a slur and an 'M' above it. The left hand has a bass line with a slur and an 'M' below it. The music is in treble and bass clefs.

Empty grand staff lines.



(2.5 part)



Teil (1)

ganzig (1)

Handwritten musical notation for the first system. The treble clef staff contains a melodic line with eighth and sixteenth notes, starting with a circled 'P'. The bass clef staff contains a rhythmic accompaniment with eighth and sixteenth notes. A large slur covers both staves.

Handwritten musical notation for the second system. The treble clef staff continues the melodic line. The bass clef staff continues the rhythmic accompaniment. A large slur covers both staves.

Handwritten musical notation for the third system. The treble clef staff continues the melodic line. The bass clef staff continues the rhythmic accompaniment. A large slur covers both staves.

Handwritten musical notation for the first system. The treble staff contains a melodic line with eighth and sixteenth notes, and the bass staff contains a rhythmic accompaniment with eighth notes. A large slur covers the entire system.

Handwritten musical notation for the second system. The notation continues with similar melodic and rhythmic patterns. A slur is present over the first two measures.

Handwritten musical notation for the third system. The piece continues with more complex rhythmic patterns in the bass staff.

(2. + rit)

Handwritten musical notation for the fourth system. The piece concludes with a double bar line and fermatas on the final notes of both staves.

Teil 5

expansiva (frei) (Fantasie)

Handwritten musical notation on a grand staff. The upper staff contains a melodic line with a long slur over several measures. The lower staff contains a bass line with a few notes. A circled '9' is written below the lower staff.

Handwritten musical notation on a grand staff, similar to the first system. The upper staff has a melodic line with a slur. The lower staff has a bass line. A circled '9' is written below the lower staff.

Handwritten musical notation on a grand staff, similar to the previous systems. The upper staff has a melodic line with a slur. The lower staff has a bass line. A circled '9' is written below the lower staff.

Four empty grand staves.

Handwritten musical notation on a grand staff. The right hand has a melodic line with a slur and a fermata. The left hand has chords and a bass line. Chords are labeled with 'b9' and '9'. A circled '47' is written above the left hand. A circled 'b' is written above the right hand. A circled 'b' is written below the left hand.

Handwritten musical notation on a grand staff. The right hand has a melodic line with a slur and a fermata. The left hand has chords and a bass line. Chords are labeled with 'b9', '9', and '#9'. A circled 'b' is written above the right hand. A circled 'b' is written below the left hand.

Handwritten musical notation on a grand staff. The right hand has a melodic line with a slur and a fermata. The left hand has chords and a bass line. Chords are labeled with '#9'. A circled 'b' is written above the right hand. A circled 'b' is written below the left hand.

~~(2+7)~~ op. 14

2x pr. mit - - - - -

(2+7)

Teil ⑥

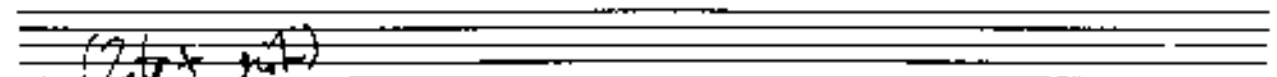
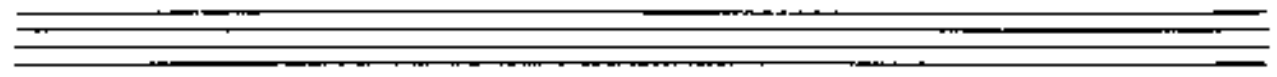
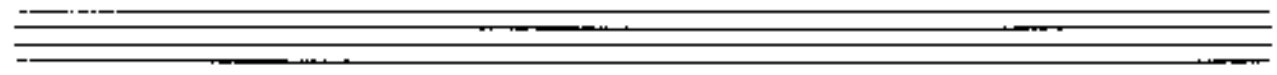
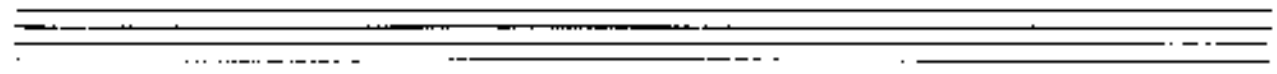
(A) *sehr ruhig*
Aria

Handwritten musical notation for the first system of the aria. It consists of a vocal line in treble clef and a piano accompaniment in bass clef. The key signature has one flat (B-flat), and the time signature is 8/8. The piano part features a steady eighth-note accompaniment. The vocal line begins with a circled 'P' for piano. A slur covers the first two measures of the vocal line.

Handwritten musical notation for the second system of the aria. It continues the vocal and piano parts from the first system. The piano accompaniment remains consistent with eighth notes. The vocal line continues with a slur over the first two measures.

Handwritten musical notation for the third system of the aria. The piano part has a key signature change to two sharps (D major) in the first measure. The vocal line continues with a slur over the first two measures.

Four empty musical staves for the continuation of the piece.



Teil 7

fren *bvest*

77

rit *ranch*

3 3 3 3

bvest *accel*

79

rit

Handwritten musical score for the first system. The treble staff begins with a half note G4, followed by a half note A4, and then a series of eighth notes: B4, C5, D5, E5, F5, G5, A5, B5, C6, D6, E6, F6, G6, A6, B6, C7. The bass staff has a half note G2, followed by a half note A2, and then a series of eighth notes: B1, C2, D2, E2, F2, G2, A2, B2, C3, D3, E3, F3, G3, A3, B3, C4, D4, E4, F4, G4, A4, B4, C5. A dynamic marking "(fai)" is written below the treble staff.

Handwritten musical score for the second system. The treble staff begins with a half note G4, followed by a half note A4, and then a series of eighth notes: B4, C5, D5, E5, F5, G5, A5, B5, C6, D6, E6, F6, G6, A6, B6, C7. The bass staff has a half note G2, followed by a half note A2, and then a series of eighth notes: B1, C2, D2, E2, F2, G2, A2, B2, C3, D3, E3, F3, G3, A3, B3, C4, D4, E4, F4, G4, A4, B4, C5. A dynamic marking "(fai)" is written below the treble staff.

Handwritten musical score for the third system. The treble staff begins with a half note G4, followed by a half note A4, and then a series of eighth notes: B4, C5, D5, E5, F5, G5, A5, B5, C6, D6, E6, F6, G6, A6, B6, C7. The bass staff has a half note G2, followed by a half note A2, and then a series of eighth notes: B1, C2, D2, E2, F2, G2, A2, B2, C3, D3, E3, F3, G3, A3, B3, C4, D4, E4, F4, G4, A4, B4, C5. The instruction "nota bene" is written above the treble staff. A sequence of numbers "3 4 2 1 2 3 5 2" is written above the treble staff.

Handwritten musical score for the fourth system. The treble staff begins with a half note G4, followed by a half note A4, and then a series of eighth notes: B4, C5, D5, E5, F5, G5, A5, B5, C6, D6, E6, F6, G6, A6, B6, C7. The bass staff has a half note G2, followed by a half note A2, and then a series of eighth notes: B1, C2, D2, E2, F2, G2, A2, B2, C3, D3, E3, F3, G3, A3, B3, C4, D4, E4, F4, G4, A4, B4, C5. The instruction "Accel" is written above the treble staff.

breit (D)

Lage in Bass Subkontra C

Sp. 1. u. 2.

vom Anfang Teil ①