

Notenheft

SONATE

1969 - 70

für Klavier

Adolf Scherbaum

Handwritten musical score for the first system. It features a grand staff with treble and bass clefs. The tempo marking "mysterioso" is enclosed in a box above the treble staff. The music begins with a treble staff containing a series of eighth notes, starting with a sharp sign (#). The bass staff contains a melodic line with a slur and a sharp sign (#). A handwritten "pp" (pianissimo) is written near the beginning. There are some handwritten annotations like "44" and "444" in the bass staff.

Handwritten musical score for the second system, continuing the piece. It shows a treble staff with a sequence of notes and a bass staff with a melodic line featuring a slur and a flat sign (b). There are handwritten annotations such as "44" and "444" in the bass staff.

Handwritten musical score for the third system. The treble staff contains a sequence of notes with a sharp sign (#). The bass staff has a melodic line with a slur and a flat sign (b). Handwritten annotations include "44=" and "444" in the bass staff.

Handwritten musical notation for the first system. The treble clef staff contains a key signature of one flat (B-flat) and a series of notes with stems pointing up. A circled 'p' indicates a piano dynamic. The bass clef staff contains a melodic line with various accidentals and slurs.

Handwritten musical notation for the second system. The treble clef staff has a 'rit...' marking above it. The bass clef staff features a melodic line with slurs and a fermata at the end of the system.

Handwritten musical notation for the third system. The treble clef staff is marked 'Tempo' and has a circled 'p'. The bass clef staff has a 'Pedal bis' marking with a fermata symbol.

Handwritten musical notation for the fourth system. The treble clef staff is marked 'mp' (mezzo-piano). The bass clef staff continues the melodic line with slurs and a fermata at the end.

pesante

Handwritten musical notation for the first system. The treble clef staff contains a circled sharp sign (#) and a melodic line with notes, including a sharp sign (#) and a flat sign (b). The bass clef staff contains a circled sharp sign (#) and a bass line with notes and a flat sign (b). There are also some handwritten markings like '8' and '8' in the bass staff.

Handwritten musical notation for the second system. The treble clef staff shows a circled sharp sign (#) and a series of notes with a flat sign (b). The bass clef staff shows a circled sharp sign (#) and a series of notes with a flat sign (b). There are also some handwritten markings like '2' and '1' above the treble staff.

Handwritten musical notation for the third system. The treble clef staff shows a circled sharp sign (#) and a series of notes with a flat sign (b). The bass clef staff shows a circled sharp sign (#) and a series of notes with a flat sign (b). There is a circled 'pp' dynamic marking and a 'rit' marking above the treble staff.

Tempo

Handwritten musical notation for the first system. The treble clef staff contains a series of eighth notes in the right hand, starting with a sharp sign. The bass clef staff contains a whole note chord with a sharp sign, followed by a half note chord with a sharp sign and a slur. Dynamic marking 'pp' is present.

Handwritten musical notation for the second system. The treble clef staff contains a series of eighth notes in the right hand, starting with a sharp sign. The bass clef staff contains a whole note chord with a sharp sign, followed by a half note chord with a flat sign and a slur. Dynamic marking 'p' is present.

Handwritten musical notation for the third system. The treble clef staff contains a series of eighth notes in the right hand, starting with a sharp sign. The bass clef staff contains a whole note chord with a sharp sign, followed by a half note chord with a sharp sign and a slur. Dynamic marking 'f' is present.

Handwritten musical notation for the fourth system. The treble clef staff contains a series of eighth notes in the right hand, starting with a flat sign. The bass clef staff contains a whole note chord with a flat sign, followed by a half note chord with a flat sign and a slur. Dynamic marking 'p' is present.

Handwritten musical notation on a grand staff. The top staff contains the handwritten text "er. gut". The middle staff (treble clef) shows a sequence of chords and notes, including a half note G4, a dotted quarter note A4, and a quarter note B4. The bottom staff (bass clef) features a complex chordal structure with accidentals (sharps and flats) and slurs. A dynamic marking "mf" is present in the middle of the piece.

Handwritten musical notation on a grand staff. The top staff contains the handwritten text "Cumpo". The middle staff (treble clef) shows a sequence of chords and notes, including a half note G4, a dotted quarter note A4, and a quarter note B4. The bottom staff (bass clef) features a complex chordal structure with accidentals (sharps and flats) and slurs. A dynamic marking "p" is present in the middle of the piece.

2

Vivace

~ ~ ~ ~ ~

Handwritten musical notation for the first system. It consists of two staves: a treble clef staff and a bass clef staff. The treble staff begins with a treble clef, a key signature of one sharp (F#), and a 5/4 time signature. The bass staff begins with a bass clef, a key signature of one sharp (F#), and a 4/4 time signature. The music features a series of eighth and sixteenth notes in the treble staff and a rhythmic accompaniment in the bass staff. There are some handwritten annotations, including a 'u' and a '4'.

Handwritten musical notation for the second system. It consists of two staves: a treble clef staff and a bass clef staff. The treble staff begins with a treble clef, a key signature of one sharp (F#), and a 4/4 time signature. The bass staff begins with a bass clef, a key signature of one sharp (F#), and a 4/4 time signature. The music features a series of eighth and sixteenth notes in the treble staff and a rhythmic accompaniment in the bass staff. There is a handwritten 'v' marking.

Handwritten musical notation for the third system. It consists of two staves: a treble clef staff and a bass clef staff. The treble staff begins with a treble clef, a key signature of one sharp (F#), and a 5/4 time signature. The bass staff begins with a bass clef, a key signature of one sharp (F#), and a 4/4 time signature. The music features a series of quarter notes in the treble staff and a rhythmic accompaniment in the bass staff. There are some handwritten annotations, including a '5' and a '4'.

Handwritten musical notation for the fourth system. It consists of two staves: a treble clef staff and a bass clef staff. The treble staff begins with a treble clef, a key signature of one sharp (F#), and a 4/4 time signature. The bass staff begins with a bass clef, a key signature of one sharp (F#), and a 4/4 time signature. The music features a series of quarter notes in the treble staff and a rhythmic accompaniment in the bass staff. There is a handwritten '8' at the end of the bass staff.

Handwritten musical notation for the first system. The top staff is in treble clef and the bottom staff is in bass clef. The music includes several chords with sharp signs (#) and notes with accents (^). Dynamic markings include 'p' (piano) and 'f' (forte). There are also some handwritten annotations above the notes.

Handwritten musical notation for the second system. The top staff shows a melodic line with notes and slurs, and the bottom staff shows chords. Dynamic markings 'p' and 'f' are present. There are also some handwritten annotations above the notes.

Handwritten musical notation for the third system. The top staff has a melodic line with notes and slurs, and the bottom staff has chords. Dynamic markings 'f' and 'p' are present. There are also some handwritten annotations above the notes.

Handwritten musical notation for the fourth system. The top staff starts with the tempo marking 'Lento' and has a melodic line with notes and slurs. The bottom staff has chords. The system ends with a double bar line. There are also some handwritten annotations above the notes.

Tempo ① *Vivace*

cresc.

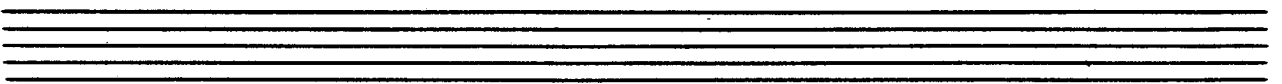
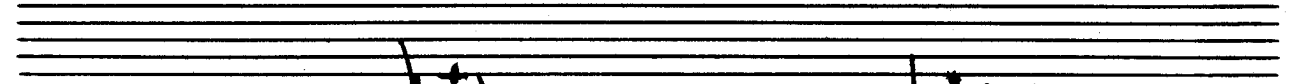
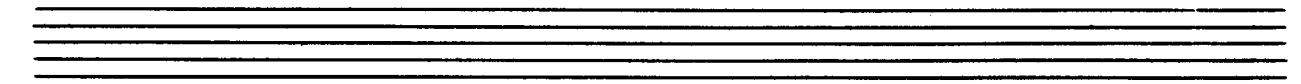
pp =

cresc.

mf =

mf =

mf =



lento

rit + cresc

Handwritten musical notation for the first system. It consists of a grand staff with treble and bass clefs. The music includes a circled '8' and 'pp' dynamic marking. Below the staff, the instruction 'Pedal - φ' is written.

Handwritten musical notation for the second system, continuing the piece with various notes and rests.

Handwritten musical notation for the third system, featuring a circled 'p' dynamic marking and a 'φ' symbol.

Handwritten musical score for the first system, featuring two staves with complex chordal textures and dynamic markings like "pp" and "rit."

Handwritten musical score for the second system, showing a melodic line with slurs and accents, and dynamic markings "pp".

Handwritten musical score for the third system, consisting of two staves with vertical lines and wavy brackets, and dynamic markings "pp".

Vivace

Handwritten musical score for the fourth system, featuring a single staff with a sequence of notes and dynamic markings "pp" and "f".

Handwritten musical score for the first system. It consists of two staves. The top staff is in treble clef and the bottom staff is in bass clef. A circled 'A' is written in the left margin. The music is in 4/4 time and features a key signature of one sharp (F#). The notation includes eighth and sixteenth notes with stems and beams, and rests.

Handwritten musical score for the second system. It consists of two staves. The top staff is in treble clef and the bottom staff is in bass clef. The music is in 4/4 time and features a key signature of one sharp (F#). The notation includes eighth and sixteenth notes with stems and beams, and rests.

Handwritten musical score for the third system. It consists of two staves. The top staff is in treble clef and the bottom staff is in bass clef. The music is in 4/4 time and features a key signature of one sharp (F#). The notation includes eighth and sixteenth notes with stems and beams, and rests.

Handwritten musical score for the fourth system. It consists of two staves. The top staff is in treble clef and the bottom staff is in bass clef. The music is in 4/4 time and features a key signature of one sharp (F#). The notation includes eighth and sixteenth notes with stems and beams, and rests.

Handwritten musical notation for the first system. The right hand has a whole rest followed by a melodic line with a triplet of eighth notes. The left hand has a series of chords with slurs and accents.

Handwritten musical notation for the second system. The right hand has a whole rest followed by a melodic line with a triplet of eighth notes. The left hand has a series of chords with slurs and accents.

poco rit (dim)

Handwritten musical notation for the third system. The right hand has a whole note with a fermata and a circled 'P'. The left hand has two triplet chords and two single chords.

ruhig

Handwritten musical notation for the fourth system. The right hand has a melodic line with a circled 'P' and a sharp sign. The left hand has a series of chords with slurs and accents.

Handwritten musical notation for the first system. The treble clef staff contains notes with accents and slurs, including a sharp sign. The bass clef staff contains a sequence of notes with slurs. A dynamic marking 'mf' is present in the first measure.

Handwritten musical notation for the second system. The treble clef staff contains notes with slurs and a sharp sign. The bass clef staff contains notes with slurs. A dynamic marking 'f' is present in the second measure.

breit

Handwritten musical notation for the third system. The word 'breit' is written above the treble clef staff. The treble clef staff contains notes with slurs and a sharp sign. The bass clef staff contains notes with slurs. A dynamic marking 'ff' is present in the first measure.

leuto

Handwritten musical notation for the fourth system. The word 'leuto' is written above the treble clef staff. The treble clef staff contains notes with slurs and a sharp sign. The bass clef staff contains notes with slurs. A circled 'rit' marking is present in the second measure. The system ends with a double bar line and a large scribble.

Tempo 1 (Vivace)

Cresc. →

Handwritten musical notation for the first system. The right-hand staff begins with a circled 5/4 time signature and a dynamic marking of *pp*. The left-hand staff contains rhythmic patterns with accents and slurs. The system concludes with a fermata over the final note.

Handwritten musical notation for the second system. The right-hand staff features a melodic line with plus signs (+) under the notes. The left-hand staff has rhythmic patterns with accents and slurs. The system concludes with a fermata over the final note.

Handwritten musical notation for the third system. The right-hand staff features a melodic line with double sharps (##) under the notes. The left-hand staff has rhythmic patterns with accents and slurs. The system concludes with a fermata over the final note.

Handwritten musical notation for the fourth system. The right-hand staff begins with a dynamic marking of *f* and a key signature change to one flat (B-flat). The left-hand staff has rhythmic patterns with accents and slurs. The system concludes with a fermata over the final note.

Handwritten musical notation for the first system. The treble clef staff contains notes with sharp and natural accidentals. The bass clef staff contains chords and notes with dynamic markings like *mf* and *mfz*. A circled sharp sign is present in the treble clef.

Handwritten musical notation for the second system. The treble clef staff contains notes with sharp and natural accidentals. The bass clef staff contains chords and notes with dynamic markings like *mf* and *mfz*.

Handwritten musical notation for the third system. The treble clef staff contains notes with sharp and natural accidentals. The bass clef staff contains chords and notes with dynamic markings like *mf* and *mfz*. A circled sharp sign is present in the treble clef.

Handwritten musical notation for the fourth system. The treble clef staff contains notes with sharp and natural accidentals. The bass clef staff contains chords and notes with dynamic markings like *mf* and *mfz*. The word "dir" is written in the bass staff. A circled sharp sign is present in the treble clef. The system ends with a double bar line and a circled sharp sign.

cresc.

poco rit.

Pesante (auf 8) aber ^{nicht} schleppen

Handwritten musical notation for the first system. The treble clef staff contains a circled chord with a sharp sign and a circled '3'. The bass clef staff contains a series of chords with accents and a '27' marking.

Handwritten musical notation for the second system. The treble clef staff contains a series of notes with a sharp sign. The bass clef staff contains a series of chords with accents and a '9' marking.

Handwritten musical notation for the third system. The treble clef staff contains a series of notes with a sharp sign. The bass clef staff contains a series of chords with accents and a '9' marking.

Handwritten musical score for the first system. The treble staff contains a series of chords, starting with a B-flat major chord. The bass staff features a complex texture with chords and a large slur covering several measures. Dynamic markings include accents (^) and a hairpin crescendo.

Handwritten musical score for the second system. The treble staff has melodic lines with accents (^). The bass staff has a complex texture with a circled *pp* in the first measure. The instruction *rit...* is written in the middle of the system.

Handwritten musical score for the third system. The treble staff has a circled *pp* and the instruction *Pachel (bis)*. A large slur covers the first part of the system. The bass staff has a complex texture.

Handwritten musical score for the fourth system. The treble staff has a circled *pp* and the instruction *rit...*. A large slur covers the first part of the system. The bass staff has a complex texture.

frei)

se. mit - die

p > pp

(wie ein Choral) sehr langsam

Handwritten musical notation for the first system. The treble staff contains chords with accidentals (sharps and naturals) and a circled *pp* dynamic marking. The bass staff contains chords with accidentals and a *pp* dynamic marking. A large *N* (forte) marking is present in the second measure.

Handwritten musical notation for the second system. The treble staff shows chords with accidentals and a *pp* dynamic marking. The bass staff features a melodic line with a slur and a *pp* dynamic marking. A *rit.* (ritardando) marking is written between the staves.

Handwritten musical notation for the third system. The treble staff contains chords with accidentals. The bass staff features a melodic line with a slur and a *pp* dynamic marking. A large *N* (forte) marking is present at the end of the system.

poco rit.

Handwritten musical notation for the fourth system. The treble staff contains chords with accidentals and a *pp* dynamic marking. The bass staff features a melodic line with a slur and a *pp* dynamic marking. A *rit.* (ritardando) marking is written above the staff, and a *ff* (fortissimo) marking is written above the final measure.

Vivace

Handwritten musical notation for the first system. It consists of two staves: a treble clef staff and a bass clef staff. The key signature has one sharp (F#). The first measure of the treble staff has a 5 below it. The first measure of the bass staff has a 4 below it. There are several measures of music with notes and chords, including some with accents (^) above them. The system ends with a double bar line.

allmählich Tempo steigern bis Prestissimo

Handwritten musical notation for the second system. It consists of two staves. The first measure of the treble staff has a 4 below it. The key signature has one sharp (F#). The system shows a transition with an arrow pointing to the right. The notation includes notes and chords, with some notes marked with a plus sign (+).

Handwritten musical notation for the third system. It consists of two staves. The key signature has one sharp (F#). The system shows a transition with an arrow pointing to the right. The notation includes notes and chords, with some notes marked with a plus sign (+).

Handwritten musical notation for the fourth system. It consists of two staves. The key signature has one sharp (F#). The system shows a transition with an arrow pointing to the right. The notation includes notes and chords, with some notes marked with a plus sign (+). The system ends with a double bar line.

Prestissimo

best

Handwritten musical notation for the first system. It consists of two staves. The upper staff is in treble clef and contains several measures of music with notes, rests, and dynamic markings. The lower staff is in bass clef and contains corresponding notes and rests. There are some annotations like 'best' and 'ber' written above the staves.

Handwritten musical notation for the second system. It consists of two staves. The upper staff is in treble clef and contains several measures of music with notes, rests, and dynamic markings. The lower staff is in bass clef and contains corresponding notes and rests. There are some annotations like 'ber' and 'longe' written above the staves.

Scherbaum
1969