

Sonate für
Klavier
1869

Notenheft

Adolf Bach

Sonate für

Klavier

1969

Adolf Scherbaum

Rubio

Handwritten musical notation for the first system. It features a treble clef and a bass clef. The time signature is 4/8. The dynamic marking is *pp*. The music consists of a melodic line in the treble clef and a supporting bass line in the bass clef, both spanning three measures.

Handwritten musical notation for the second system. It continues the melodic and bass lines from the first system. It includes a mezzo-forte (*mf*) dynamic marking and various phrasing slurs.

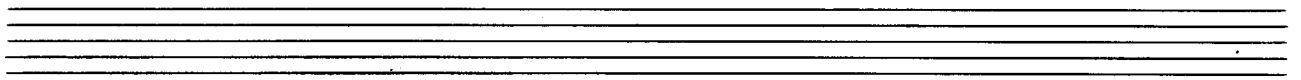
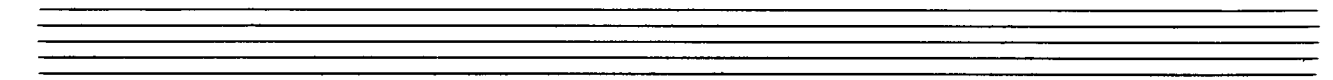
Handwritten musical notation for the third system, concluding the piece. It includes a forte (*f*) dynamic marking and various phrasing slurs. A circled '1' is written at the end of the treble line.

pesante

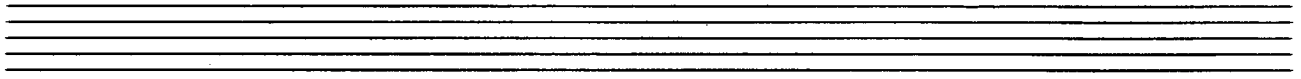
Handwritten musical notation for the first system. It consists of two staves. The upper staff is in treble clef and contains several chords and notes with accents (^) and a circled *ff* marking. The lower staff is in bass clef and contains notes with accents (^) and a bracketed *8* marking. The tempo marking *pesante* is written above the first staff.

Handwritten musical notation for the second system. It consists of two staves. The upper staff is in treble clef and contains notes with accents (^) and a circled *ff* marking. The lower staff is in bass clef and contains notes with accents (^) and a circled *ff* marking.

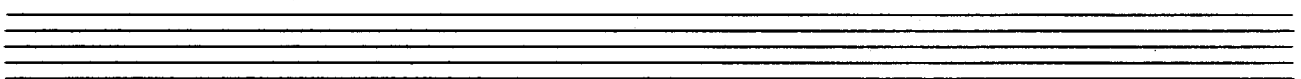
Handwritten musical notation for the third system. It consists of two staves. The upper staff is in treble clef and contains notes with accents (^) and a circled *ff* marking. The lower staff is in bass clef and contains notes with accents (^) and a circled *ff* marking. A circled *2* is written at the end of the system.



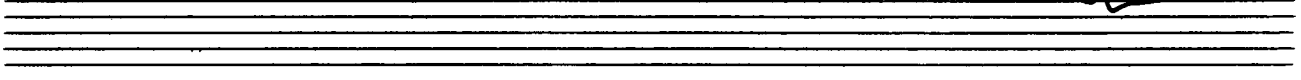
Handwritten musical notation for the first system. It consists of two staves. The upper staff is in treble clef and contains a sequence of chords and notes, starting with a dynamic marking of *pp*. The lower staff is in bass clef and contains a sequence of chords and notes, including a large slur spanning across several measures. The notation is handwritten and includes various accidentals and clefs.



Handwritten musical notation for the second system. It consists of two staves. The upper staff is in treble clef and contains a sequence of notes and chords. The lower staff is in bass clef and contains a sequence of notes and chords, including a large slur and various accidentals. The notation is handwritten and includes various accidentals and clefs.



Handwritten musical notation for the third system. It consists of two staves. The upper staff is in treble clef and contains a sequence of notes and chords, starting with a dynamic marking of *mf*. The lower staff is in bass clef and contains a sequence of notes and chords, including a large slur and various accidentals. The notation is handwritten and includes various accidentals and clefs.



3

4

> din >

5

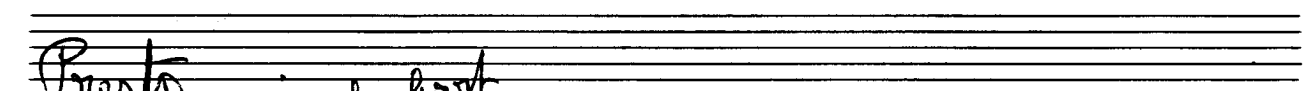
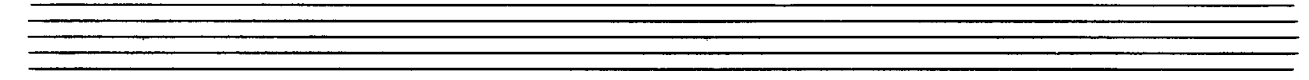
Handwritten musical notation for system 5. The top staff contains a treble clef, a wavy line, and a few notes. The bottom staff contains a bass clef, a wavy line, and several chords with accidentals. The chords are labeled with 'PVP' and '8'.

(2. + gr. rit - - - - -

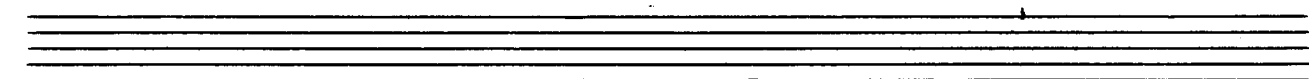
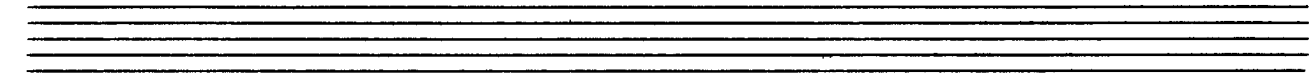
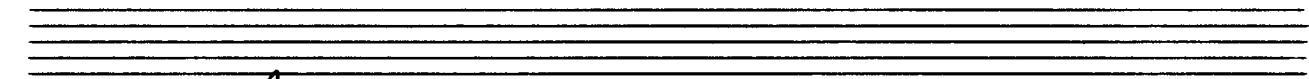
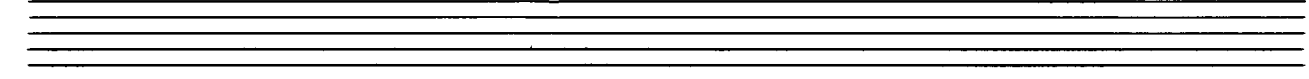
D.C

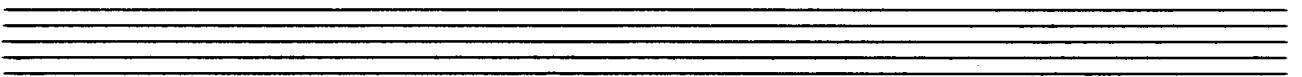
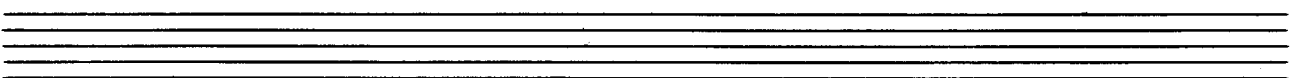
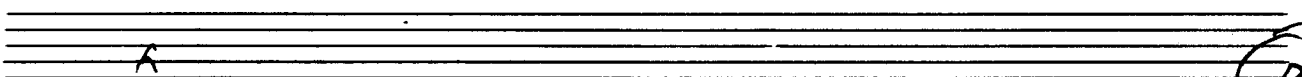
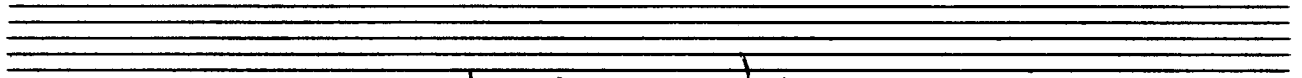
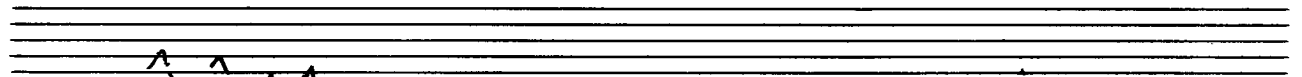
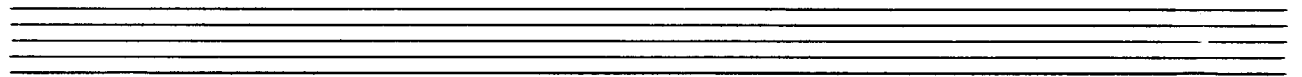
Handwritten musical notation for system 6. The top staff contains a treble clef, a wavy line, and notes with accents. The bottom staff contains a bass clef, a wavy line, and several chords with accidentals and '8' markings.

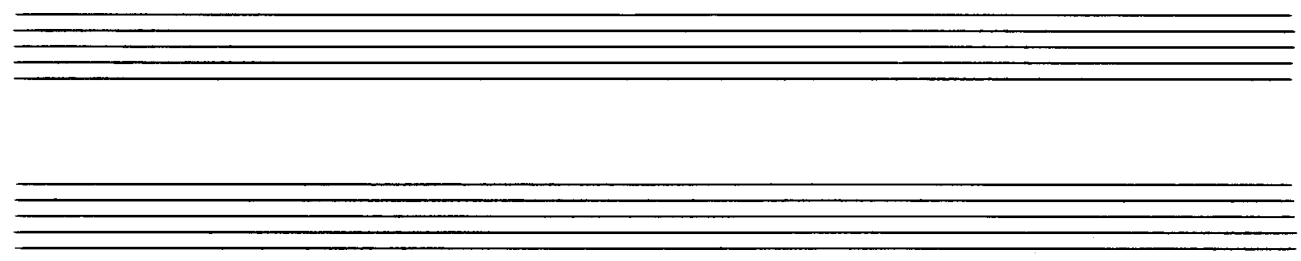
Handwritten musical notation for system 7. The top staff contains a treble clef, the word 'lange', and notes. The bottom staff contains a bass clef, notes, and a chord with an '8' marking.



Presto *sehr hart*



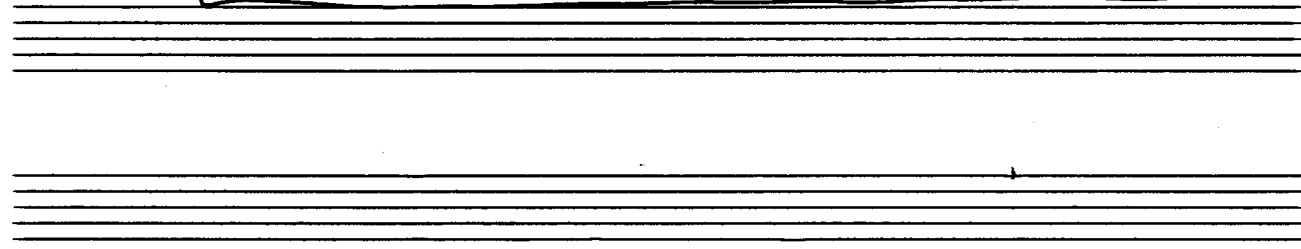


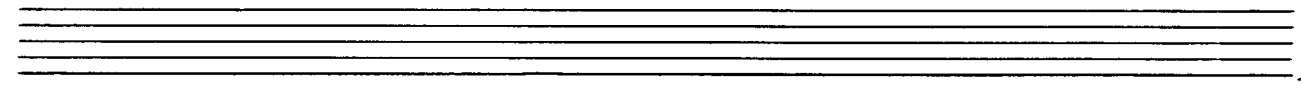


Handwritten musical notation for the first system. The upper staff is in treble clef with a key signature of two sharps (F# and C#). It begins with a circled 'p' and a dynamic hairpin. The lower staff is in bass clef with a key signature of one sharp (F#). It features a circled '8' and a dynamic hairpin. The system concludes with a double bar line.

Handwritten musical notation for the second system. The upper staff is in treble clef with a key signature of two sharps. It begins with a circled 'mp' and a dynamic hairpin. The lower staff is in bass clef with a key signature of one sharp. It features a circled '8' and a dynamic hairpin. The system concludes with a double bar line.

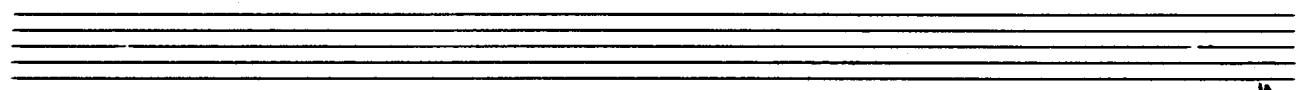
Handwritten musical notation for the third system. The upper staff is in treble clef with a key signature of two sharps. It begins with a circled 'p' and a dynamic hairpin. The lower staff is in bass clef with a key signature of one sharp. It features a circled '8' and a circled 'ff' in the middle. The system concludes with a double bar line and a circled '3' at the end of the staff.



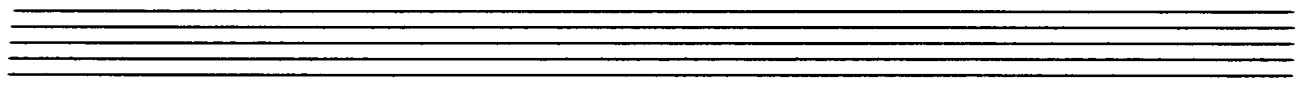


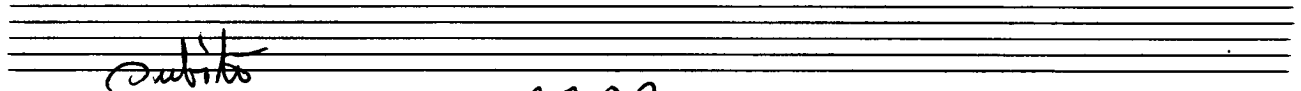
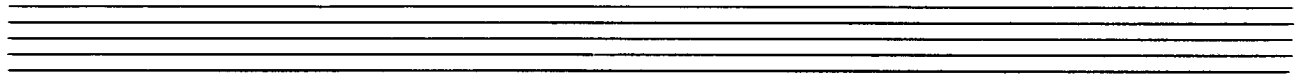
Handwritten musical notation on a grand staff. The right hand (treble clef) begins with a melodic line marked with a fermata and a '2' above it. The left hand (bass clef) has a bass line with a fermata. The system is enclosed in a large, hand-drawn oval.

Handwritten musical notation on a grand staff, similar to the first system. It features a melodic line in the right hand and a bass line in the left hand, both with fermatas. A large hand-drawn oval encompasses the entire system.

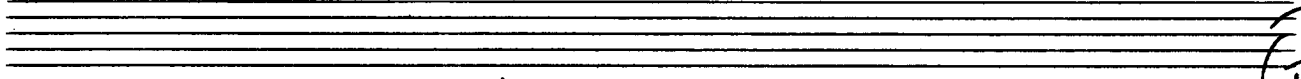
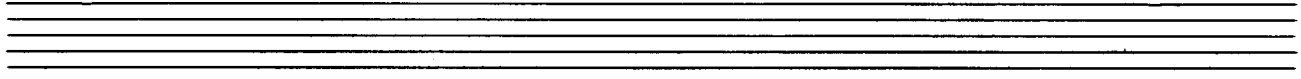


Handwritten musical notation on a grand staff. The right hand contains a complex melodic passage with various ornaments and slurs. The left hand features a series of chords with slurs. The system concludes with a double bar line and a fermata. The dynamic marking 'ppp' is written in the lower left. The system is enclosed in a large, hand-drawn oval.

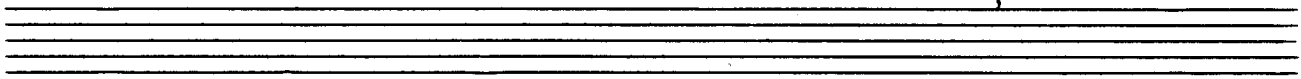




subito



sempre crescendo

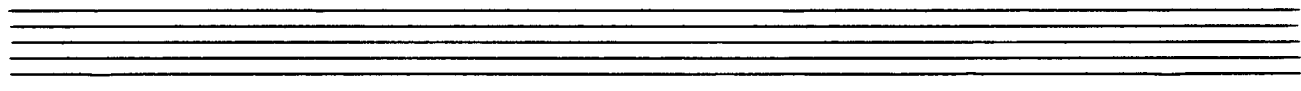
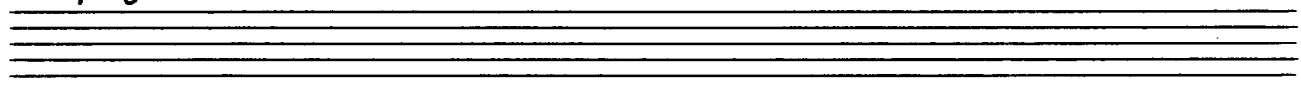
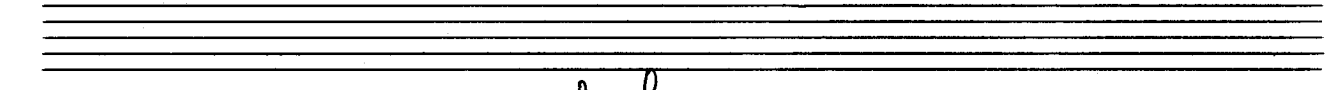
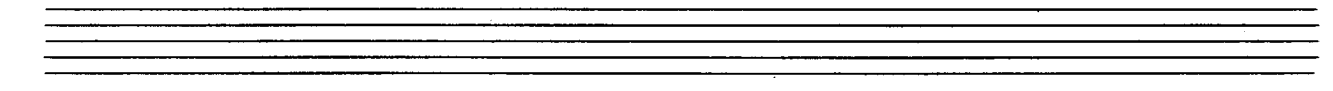
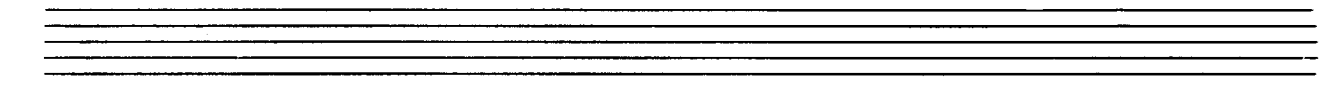


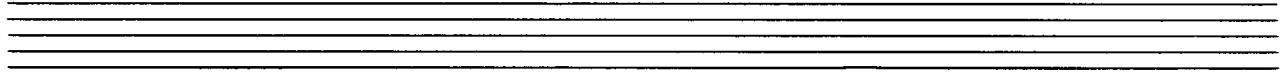
Handwritten musical score for the first system. The treble clef staff contains a melodic line with notes and accidentals (sharps and flats). Above the staff, the letters 'B' and 'A' are written. The bass clef staff contains a bass line with notes and accidentals. A circled '2' is written at the beginning of the treble staff. A circled '2' is also written at the beginning of the bass staff. A circled '2' is written at the end of the treble staff. A circled '2' is written at the end of the bass staff. A circled '2' is written at the end of the treble staff. A circled '2' is written at the end of the bass staff.

Handwritten musical score for the second system. The treble clef staff contains a melodic line with notes and accidentals. The dynamic marking 'mf' is written at the beginning of the treble staff. The bass clef staff contains a bass line with notes and accidentals. A circled '2' is written at the end of the treble staff. A circled '2' is written at the end of the bass staff.

Handwritten musical score for the third system. The treble clef staff contains a melodic line with notes and accidentals. The bass clef staff contains a bass line with notes and accidentals. A circled '2' is written at the beginning of the treble staff. A circled '2' is written at the end of the treble staff. A circled '2' is written at the end of the bass staff. A circled '6' is written at the end of the treble staff.

Handwritten musical score for piano, consisting of three systems of staves. Each system has a treble and bass staff. The first system includes a circled key signature of three sharps (F#, C#, G#) and a circled number 7. The notation includes notes, rests, and chord symbols with accents.





(allmählich wieder im Presto)

Handwritten musical notation for the first system. It features a treble clef with a sharp sign (F#) and a common time signature (C). The melody is written on a single staff with a long horizontal line and a wavy line above it. The bass clef staff contains a complex chordal texture with many notes, some marked with accents (^) and a circled '8'. A dynamic marking 'ppp' is present. The word 'cresc.' is written with a long arrow pointing to the right, indicating a crescendo. There are also some handwritten annotations like '8' and '1'.

Handwritten musical notation for the second system. It features a treble clef with a sharp sign (F#) and a common time signature (C). The melody is written on a single staff with a long horizontal line and a wavy line above it. The bass clef staff contains a complex chordal texture with many notes, some marked with accents (^) and a circled '8'. There are also some handwritten annotations like '8' and '1'.

Handwritten musical notation for the third system. It features a treble clef with a sharp sign (F#) and a common time signature (C). The melody is written on a single staff with a long horizontal line and a wavy line above it. The bass clef staff contains a complex chordal texture with many notes, some marked with accents (^) and a circled '8'. There are also some handwritten annotations like '8' and '1'.

Tango ①

Lento

so niedrig als möglich

III dün >
ppp
ppp#

Pedal bis p

ppp
ppp#

ppp
ppp#

Pedal bis p

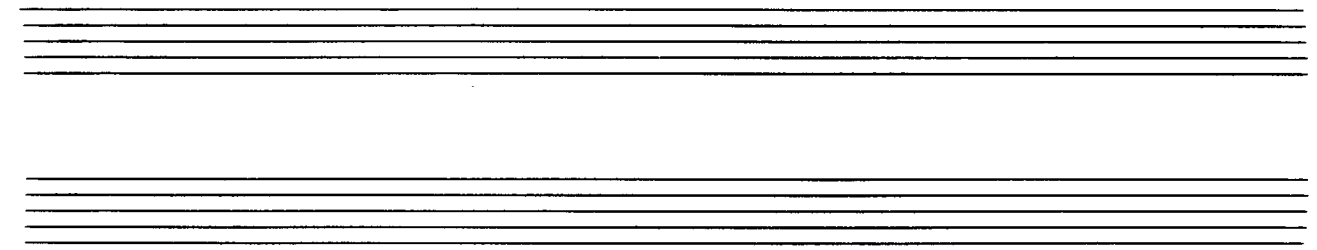
Handwritten musical notation for the first system. It consists of two staves. The upper staff is in treble clef and contains several chords and melodic fragments, with a large slur over the first two measures. The lower staff is in bass clef and contains chords, with a bracket under the first two measures. The tempo marking "poco rit" is written above the second measure of the upper staff.

Handwritten musical notation for the second system. It consists of two staves. The upper staff is in treble clef and features a melodic line with a slur and a "pmb" marking. The lower staff is in bass clef and contains complex chordal structures. The system concludes with a double bar line.

Handwritten musical notation for the third system. It consists of two staves. The upper staff is in treble clef and begins with a wavy line, followed by a melodic line with a slur. The lower staff is in bass clef and contains sustained chords. The system concludes with a double bar line.

Handwritten musical score for piano, showing a sequence of chords and dynamics markings. The notation includes a treble clef, a key signature of one flat (B-flat), and a common time signature (C). The music consists of a series of chords, some with slurs and accents. The dynamics markings are *rit.*, *rit. + dim.*, and *rit. attacca*. The piece concludes with *D.C. Presto al f CODA*.

Handwritten musical score for piano, showing a sequence of chords and dynamics markings. The notation includes a treble clef, a key signature of one flat (B-flat), and a common time signature (C). The music consists of a series of chords, some with slurs and accents. The dynamics markings are *Prestissimo* and *f CODA*.



Handwritten musical notation on two staves. The upper staff is in treble clef and contains a sequence of notes with various accidentals (sharps, flats, naturals). The lower staff is in bass clef and contains a sequence of notes, with an '8' written below the first measure.

Handwritten musical notation on two staves. The upper staff is in treble clef and contains notes with accidentals, followed by four measures with rhythmic markings (slashes) and numbers 1, 2, 3, 4 above them. The lower staff is in bass clef and contains notes with accidentals, with an '8' written below the first measure. The word "musik" is written above the first measure of the upper staff.

Handwritten musical notation on two staves. The upper staff is in treble clef and contains notes with accidentals, with an '8' written above the first measure. The lower staff is in bass clef and contains notes with accidentals, with an '8' written below the first measure. The word "pesante" is written above the first measure of the upper staff.

1969
Wien
Adolf Scherbaum