

L.v. BEETHOVEN



W.A. MOZART



NOTENHEFT

F. SCHUBERT



J. HAYDN



J. STRAUSS



1

Auf einem chinesischen
Teewürzelloren.

Die Schlechten fürchten deine Klauen —
Die Guten freuen sich deiner Grazie —

Derlei

Hörte ich gern

Von meinem Vers.

7 Teile für Klavier

(nach Texten (Gedichte und Lieder v.
Bertolt Brecht)

1969 Adolf Scherbaum

(Ped. = Pedal
♯ = Pedal aus.)



Adagio

Handwritten musical score for piano, consisting of three systems of staves. The notation includes treble and bass clefs, various note values, rests, and dynamic markings.

System 1: Features a treble clef staff with a circled treble clef and a bass clef staff. Annotations include "(rit)", "Tempo" with a circled 1, "din.", and dynamic markings ">pp" and "ppp".

System 2: Features a treble clef staff with a circled treble clef and a bass clef staff. Annotations include "(pr. rit)", "f", and a circled 1.

System 3: Features a treble clef staff with the handwritten instruction "frei sehr ruhig" above it and a circled treble clef. The dynamic marking "ppp" is present. The system concludes with a double bar line and a wavy line indicating a tremolo effect.

2

Der Pflaumenbaum

Im Hofe steht ein Pflaumenbaum —

Der ist klein, man glaubt es kaum —

Er hat ein Gitter drum

So tritt ihn keiner an.

Der kleine kann nicht größer sein —
Ja, größer sein, das möchte er gern —

Es ist keine Red' davon —

Er hat zu wenig Sonne.

Den Pflaumenbaum
glaubt man ihn kaum,

Weil er wie eine Pflaume hat.

Doch es ist ein Pflaumenbaum —

Man kennt es an dem Blatt,

Andante (♩)

2

Andante (♩) pesante (appassionata)

perante *(accel.)*

Handwritten musical score for the first system. It consists of two staves. The upper staff is in treble clef and contains a series of notes with various accidentals (flats and sharps). The lower staff is in bass clef and contains notes and rests. The tempo marking *(accel.)* is written above the second measure.

(grazioso)

Handwritten musical score for the second system. It consists of two staves. The upper staff has a fermata over a note and some scribbled-out notes. The lower staff has notes with accents (^) and some scribbled-out notes. The tempo marking *(grazioso)* is written above the first measure.

sehr ruhig

pp

rit.

2. t. p.c. ad

Handwritten musical score for the third system. It consists of two staves. The upper staff has notes with a slur and a fermata. The lower staff has notes with a slur. Dynamic markings *pp* and *rit.* are present. The system ends with a repeat sign and the marking *2. t. p.c. ad*.

größte Ruhe *(pizz.)*

pp

Handwritten musical score for the fourth system. It consists of two staves. The upper staff has notes with a slur and a fermata. The lower staff has notes with a slur. Dynamic marking *pp* is present. The system ends with a repeat sign and the marking *(pizz.)*.

③

Legen Verführung.

Laßt euch nicht verführen —
Es gibt keine Wiederkehr —
Der Tor steht in den Türen —
Ihr könnt schon Nachtwind spüren:
ES KOMMT KEIN Morgen mehr. —

④

Laßt euch nicht betrügen —
Daß Leben wenig ist —!
Schlurft es in vollen Zügen —!
Es kann euch nicht genügen —
Wenn ihr es lassen müßt!

Laßt euch nicht verträsten!
Ihr habt nicht zu viel Zeit!
Laßt Morder den Verwunden!
Dass Leben ist auch geübt:
Es steht nicht mehr bereit.



Laßt euch nicht verführen
Zu Tode und Ausgesetzte!
Was kann euch Angst noch führen?
Ihr sterbt mit allen Tieren

UND

ES KOMMT

NICHTS

NACHHER.

(sehr energ.) 3 (Nr. 3) (3-4 + spielen)

Presto

(rit.)

ADAGIO (presente)

4/4

(past...) due

Mysterioso

lunga

(4)

Der Blümeergarten .

Au See tief zwischen Tann und
Silberpappel —

Beschnitt von Mauer und Gesträuch
ein Garten —

So weise angelegt mit monatlichen
Blumen —

Daß er vom März bis zum Oktober
blüht —

Hier, in der Früh - nicht allzu häufig -
sitz ich

Und wünsche mir, auch ich mög
allezeit -

In den verschiedenen Wettern -
guten - schlechten

Dies oder jenes Angenehme zeigen.

4

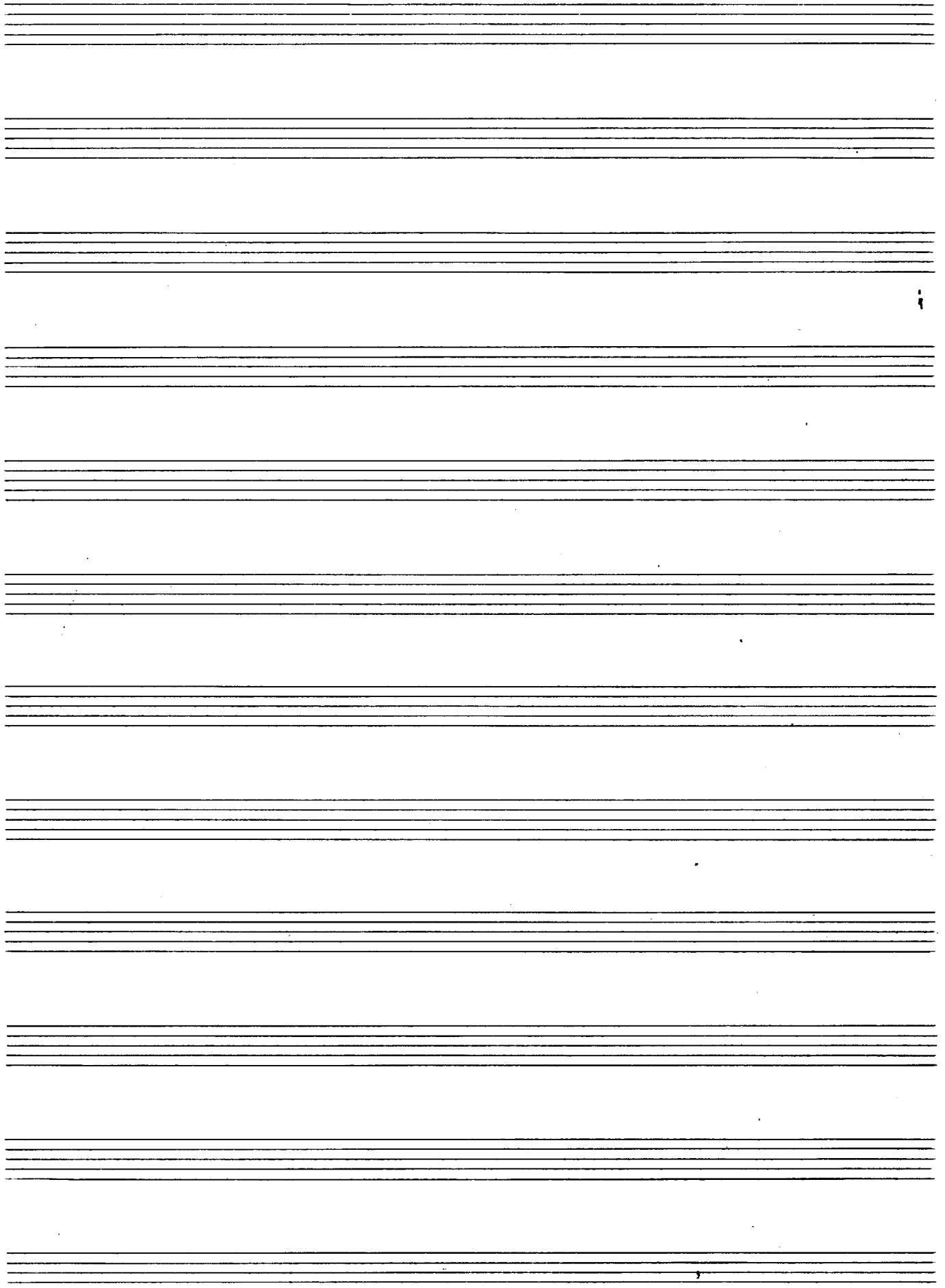
Largo (♩)

Handwritten musical notation for the first system. The treble clef staff contains notes with accidentals and dynamic markings such as p and $\hat{}$. The bass clef staff contains a melodic line with a triplet of eighth notes.

Handwritten musical notation for the second system. The treble clef staff has notes with accidentals and dynamic markings like f . The bass clef staff continues the melodic line with eighth notes.

Handwritten musical notation for the third system. The treble clef staff includes the instruction $> rit + din$ and $2. + D.C. al f$. The bass clef staff features a series of chords with accidentals and a rhythmic pattern of eighth notes.

Handwritten musical notation for the fourth system. The treble clef staff starts with pp and includes the instruction $rit + din$. The bass clef staff contains chords and notes, with a dynamic marking of $pppp$ and a bracketed section of notes.



5

Die Maske des Bösen.

An meiner Wand hängt ein
japanisches Holzwerk —

Maske eines bösen Dämons,
bemalt mit Goldlack. —

Mitfühlend sehe ich

Die geschwellenen Hirnaderen —
anderräufend —

Wie austreuend es ist —
böse zu sein.

5

pesante (andante) *hoort*

Handwritten musical score for the first system. It consists of two staves. The top staff is in treble clef with a 4/8 time signature. The bottom staff is in bass clef with an 8/8 time signature. The music features chords with accents (^) and slurs. A 'pizz' marking is present in the first measure of the top staff. The key signature has one sharp (F#).

Handwritten musical score for the second system. It consists of two staves. The top staff is in treble clef with a 6/8 time signature. The bottom staff is in bass clef with an 8/8 time signature. The music features chords with accents (^) and slurs. A 'tr. (accel.)' marking with an arrow is present above the top staff. The bottom staff has triplets of eighth notes with an '8' below them. The key signature has one sharp (F#).

Handwritten musical score for the third system. It consists of two staves. The top staff is in treble clef with a 4/8 time signature. The bottom staff is in bass clef with a 4/8 time signature. The music features chords with accents (^) and slurs. A 'sehr breit' marking is present above the top staff. The key signature has one sharp (F#).

(ev. mit)

(sehr) *concento* →

Handwritten musical score for the first system. It consists of a piano (p) part and a right-hand (RH) part. The piano part features dense, block-like chords with some melodic movement. The RH part has a more melodic line with some grace notes and slurs. The key signature has two flats (B-flat and E-flat), and the time signature is 4/4.

sehr breit (r)

Handwritten musical score for the second system. The piano part starts with a wide interval (marked with a circled 'r') and then continues with a melodic line. The RH part has a melodic line with some slurs and accents. The key signature has two flats, and the time signature is 4/4.

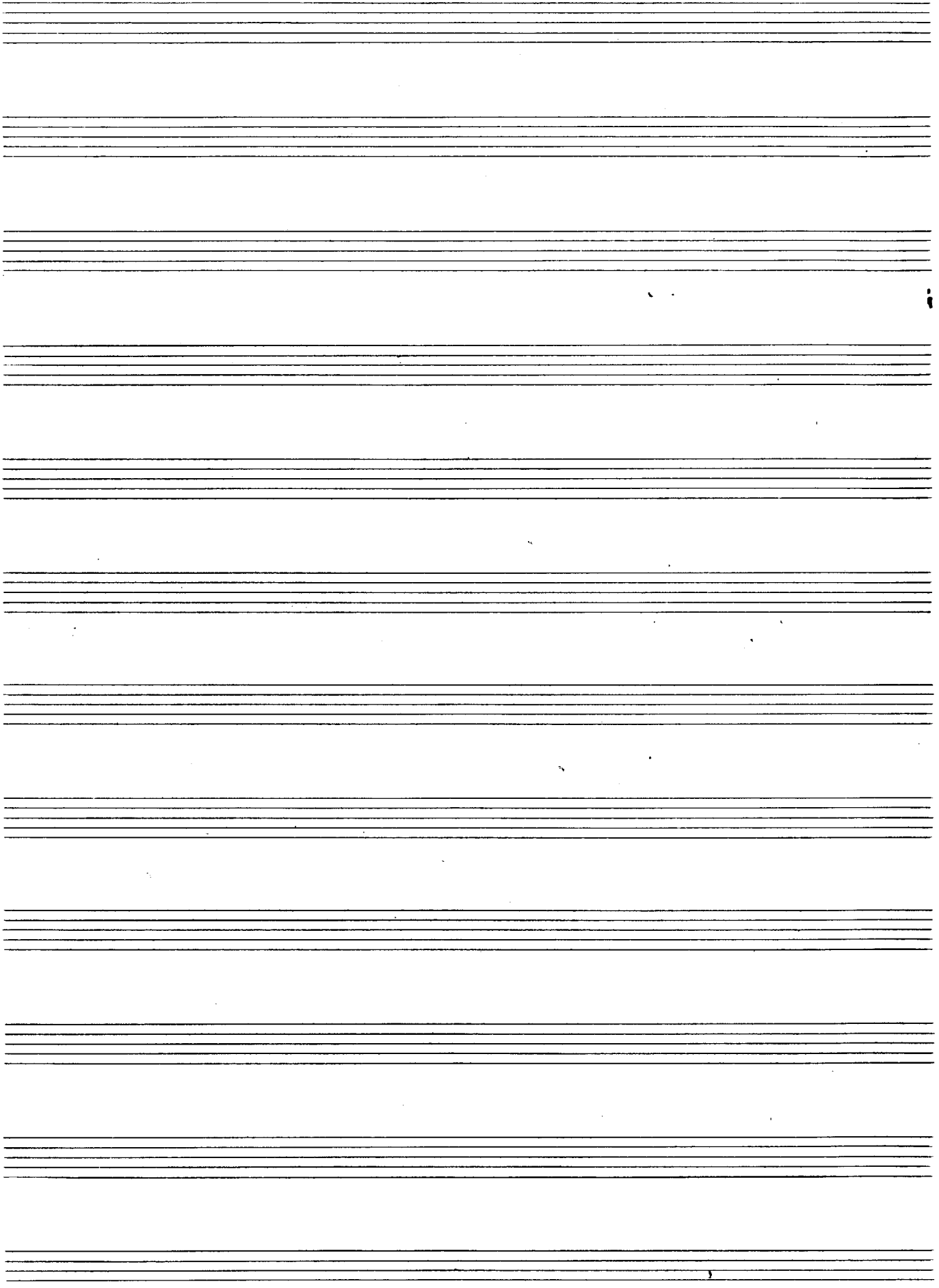
(mit ev. Resonanz)

pp

(ganz frei)

Handwritten musical score for the third system. It includes dynamic markings like *pp* and *pp*. There are performance instructions like "(ganz frei)" and "D.C. al fine". The piano part has some slurs and accents. The RH part has a melodic line with some slurs. The key signature has two flats, and the time signature is 4/4.

Handwritten musical score for the fourth system. It shows a complex chordal structure with many sharps and flats. The piano part has a dense texture. The RH part has a melodic line. The key signature has many sharps and flats, and the time signature is 4/4.



6

Der Rauch

Das kleine Haus unter

Bäumen am See

Vom Dach steigt Rauch —

Fühlte er —

Wie tröstlos dann wären —

HAUS

Bäume

und

See.

6

sehr ruhig

mit größter Ruhe

gr. rit + din

7.

Gedenktafel für die im Krieg des
Hitler gegen Frankreich Gefallenen.

B || Daß er verreckt! ist mein letzter Wille.
Es ist der Erzfeind.
Hört ihr, das ist wahr!

Ich kann es sagen, denn nur die
Loire

Weiß, wo ich nunmehr bin,
Und eine Grille.

Ihr Leute, wenn ihr einen sagen hört
Er habe nur ein großes Reich zerstört

In zwanzig Tagen, fragt,
wo ich geblieben!

Ich war dabei — und ~~lebte~~
daran sieben. —

Handwritten musical notation for the first system. The right hand part begins with a treble clef, a key signature of two flats (B-flat and E-flat), and a common time signature. The first measure contains a half note chord with a sharp accent (^) above it. The left hand part consists of a series of chords, each represented by a vertical line with several horizontal strokes indicating the notes.

Handwritten musical notation for the second system. The right hand part starts with a treble clef, a key signature of two flats, and a common time signature. The first measure has a half note chord with a sharp accent (^) above it. The tempo marking "accel." is written above the first measure. A handwritten instruction "(2. + noch rascher und erregter)" is written above the second measure. The right hand part continues with a half note chord in the second measure, also with a sharp accent (^) above it. The left hand part continues with a series of chords.

Handwritten musical notation for the third system. The right hand part begins with a treble clef, a key signature of two flats, and a common time signature. The first measure has a half note chord with a sharp accent (^) above it. The left hand part continues with a series of chords.

Handwritten musical notation for the fourth system. The right hand part starts with a treble clef, a key signature of one sharp (F#), and a common time signature. The first measure has a half note chord with a sharp accent (^) above it. The left hand part continues with a series of chords. The system concludes with a double bar line and a fermata over the final chord.

Prestissimo

(oder brief) würdig ausladend

Handwritten musical score for the first system. The top staff is a treble clef with a key signature of two sharps (F# and C#) and a common time signature. It contains several measures of music with complex chordal textures, including some notes with slurs and accents. The bottom staff is a bass clef with a key signature of two sharps and a common time signature. It contains several measures of music with complex chordal textures, including some notes with slurs and accents. There are also some handwritten annotations like '6' and '4' in the left margin.

Handwritten musical score for the second system. The top staff is a treble clef with a key signature of two sharps (F# and C#) and a common time signature. It contains several measures of music with complex chordal textures, including some notes with slurs and accents. The bottom staff is a bass clef with a key signature of two sharps and a common time signature. It contains several measures of music with complex chordal textures, including some notes with slurs and accents.

Handwritten musical score for the third system. The top staff is a treble clef with a key signature of two sharps (F# and C#) and a common time signature. It contains several measures of music with complex chordal textures, including some notes with slurs and accents. The bottom staff is a bass clef with a key signature of two sharps and a common time signature. It contains several measures of music with complex chordal textures, including some notes with slurs and accents.

Handwritten musical score for the first system. The top staff is in treble clef and contains complex chordal textures with various accidentals (sharps, flats, naturals) and dynamic markings (accents, slurs). The two bottom staves are in bass clef and provide a simpler accompaniment with fewer notes and some dynamic markings.

Handwritten musical score for the second system. The top staff is in treble clef and features a melodic line with some accidentals. The two bottom staves are in bass clef. A section is marked "Pesante" with a double bar line and a circled symbol. The word "Lunga" is written at the end of the system. The notation includes various accidentals and dynamic markings.

(graves rit.)