

L.V. BEETHOVEN



W.A. MOZART



# NOTENHEFT

F. SCHUBERT



J. HAYDN



J. STRAUSS



FORMAT

(?)  
Salon - Stücke für Elektro. Orgel

1969  
Anfang 1969

1

largo (f) —

Handwritten musical notation for the first system. The treble clef staff contains notes with accidentals (sharps and naturals) and rests, with a fermata over the first two measures. The bass clef staff contains notes with accidentals and rests, also with a fermata over the first two measures. Dynamic markings include *p* and *f*. A large upward-pointing arrow is positioned below the first two measures.

Handwritten musical notation for the second system. The treble clef staff contains notes with accidentals and rests, with a fermata over the first two measures. The bass clef staff contains notes with accidentals and rests, also with a fermata over the first two measures. Dynamic markings include *p* and *f*. A large upward-pointing arrow is positioned below the first two measures.

poco ruff

Handwritten musical notation for the third system. The treble clef staff contains notes with accidentals and rests, with a fermata over the first two measures. The bass clef staff contains notes with accidentals and rests, also with a fermata over the first two measures. Dynamic markings include *f* (circled) and *fz*. A large upward-pointing arrow is positioned below the first two measures.

Handwritten musical notation on a five-line staff. It features a treble clef and a key signature of one sharp (F#). The notation includes a circled '5' at the beginning, followed by several measures of music with notes, rests, and accidentals. A large slur covers the final two measures, which end with a double bar line and a repeat sign.

Handwritten musical notation on a five-line staff. It features a treble clef and a key signature of one sharp (F#). The notation includes a circled '6' at the beginning, followed by several measures of music with notes, rests, and accidentals. A large slur covers the final two measures, which end with a double bar line and a repeat sign.

rit

Handwritten musical notation on a five-line staff. It features a treble clef and a key signature of one sharp (F#). The notation includes a circled '7' at the beginning, followed by several measures of music with notes, rests, and accidentals. A large slur covers the final two measures, which end with a double bar line and a repeat sign. The text "D.C. al" is written above the final measure.

Handwritten musical notation on a five-line staff. It features a treble clef and a key signature of one sharp (F#). The notation includes a circled '8' at the beginning, followed by several measures of music with notes, rests, and accidentals. A large slur covers the final two measures, which end with a double bar line and a repeat sign.

2

Andante

Handwritten musical notation for the first system, measures 1-4. The music is in 4/4 time. The first measure contains a treble clef, a key signature of one sharp (F#), and a 4/4 time signature. The melody begins with a quarter note G4, followed by a quarter rest, and then a quarter note A4. The bass line starts with a quarter note G2, followed by a quarter note F#2, and then a quarter note G2. The second measure features a melodic phrase starting with a quarter note A4, followed by a quarter note B4, and then a quarter note C5. The bass line continues with a quarter note G2, followed by a quarter note F#2, and then a quarter note G2. The third measure shows a melodic phrase starting with a quarter note B4, followed by a quarter note C5, and then a quarter note D5. The bass line continues with a quarter note G2, followed by a quarter note F#2, and then a quarter note G2. The fourth measure concludes the system with a melodic phrase starting with a quarter note C5, followed by a quarter note B4, and then a quarter note A4. The bass line continues with a quarter note G2, followed by a quarter note F#2, and then a quarter note G2.

Handwritten musical notation for the second system, measures 5-8. The music continues in 4/4 time. The first measure of this system features a melodic phrase starting with a quarter note A4, followed by a quarter note B4, and then a quarter note C5. The bass line continues with a quarter note G2, followed by a quarter note F#2, and then a quarter note G2. The second measure shows a melodic phrase starting with a quarter note B4, followed by a quarter note C5, and then a quarter note D5. The bass line continues with a quarter note G2, followed by a quarter note F#2, and then a quarter note G2. The third measure concludes the system with a melodic phrase starting with a quarter note C5, followed by a quarter note B4, and then a quarter note A4. The bass line continues with a quarter note G2, followed by a quarter note F#2, and then a quarter note G2.

rit  $\text{♩}$  tempo

Handwritten musical notation for the third system, measures 9-12. The music continues in 4/4 time. The first measure of this system features a melodic phrase starting with a quarter note A4, followed by a quarter note B4, and then a quarter note C5. The bass line continues with a quarter note G2, followed by a quarter note F#2, and then a quarter note G2. The second measure shows a melodic phrase starting with a quarter note B4, followed by a quarter note C5, and then a quarter note D5. The bass line continues with a quarter note G2, followed by a quarter note F#2, and then a quarter note G2. The third measure concludes the system with a melodic phrase starting with a quarter note C5, followed by a quarter note B4, and then a quarter note A4. The bass line continues with a quarter note G2, followed by a quarter note F#2, and then a quarter note G2.

4

Handwritten musical notation on a five-line staff. The top staff contains a melodic line with notes and accidentals. The bottom staff contains a bass line with notes and accidentals. There are various markings including 'f', 'p', and 'pp'.

rit + dim

Handwritten musical notation on a five-line staff. The top staff contains a melodic line with notes and accidentals. The bottom staff contains a bass line with notes and accidentals. There are various markings including 'f', 'p', and 'pp'.

Handwritten musical notation on a five-line staff. The top staff contains a melodic line with notes and accidentals. The bottom staff contains a bass line with notes and accidentals. There are various markings including 'f', 'p', and 'pp'.

Handwritten musical notation on a five-line staff. The top staff contains a melodic line with notes and accidentals. The bottom staff contains a bass line with notes and accidentals. There are various markings including 'f', 'p', and 'pp'.

3

ritard.

Handwritten musical notation for system 1, measures 1-4. The piece is in treble clef with a key signature of one sharp (F#) and a 4/4 time signature. The first two measures feature a melody in the right hand with a slur over the notes, while the left hand plays a steady accompaniment of quarter notes. A double bar line appears after the second measure. The third and fourth measures continue the melody in the right hand, with the left hand accompaniment. A wavy line indicates a ritardando effect at the end of the system.

Handwritten musical notation for system 2, measures 5-8. The melody in the right hand continues with a slur, and the left hand accompaniment remains consistent. A double bar line is present after the sixth measure.

Handwritten musical notation for system 3, measures 9-12. The melody in the right hand continues with a slur, and the left hand accompaniment remains consistent. A double bar line is present after the tenth measure.

6

Handwritten musical notation for the first system. The treble clef staff contains a quarter note G, followed by a quarter rest, then a quarter note A with an accent (^), and another quarter rest. The bass clef staff contains a half note chord of G and B, followed by a half note chord of A and C. A double bar line with repeat dots is present. The second measure of the treble staff contains a quarter note G, followed by a quarter note A, and a quarter note B. The bass clef staff contains a half note chord of G and B, followed by a half note chord of A and C. A handwritten number '37' is written below the treble staff.

Handwritten musical notation for the second system. The treble clef staff contains a quarter note G, followed by a quarter note A, and a quarter note B. The bass clef staff contains a half note chord of G and B, followed by a half note chord of A and C. A double bar line with repeat dots is present. The second measure of the treble staff contains a quarter note G, followed by a quarter note A, and a quarter note B. The bass clef staff contains a half note chord of G and B, followed by a half note chord of A and C.

Handwritten musical notation for the third system. The treble clef staff contains a quarter note G, followed by a quarter note A, and a quarter note B. The bass clef staff contains a half note chord of G and B, followed by a half note chord of A and C. A double bar line with repeat dots is present. The second measure of the treble staff contains a quarter note G, followed by a quarter note A, and a quarter note B. The bass clef staff contains a half note chord of G and B, followed by a half note chord of A and C. A handwritten number '38' is written below the treble staff. A key signature change symbol (one sharp) is written above the treble staff. Handwritten notes include '1<sup>a</sup> dall'rit. coll.' and '2<sup>a</sup> p.c. al ♯'.

Handwritten musical notation for the fourth system. The treble clef staff contains a quarter note G, followed by a quarter note A, and a quarter note B. The bass clef staff contains a half note chord of G and B, followed by a half note chord of A and C. A double bar line with repeat dots is present. The second measure of the treble staff contains a quarter note G, followed by a quarter note A, and a quarter note B. The bass clef staff contains a half note chord of G and B, followed by a half note chord of A and C. A handwritten number '39' is written below the treble staff. A key signature change symbol (one sharp) is written above the treble staff. The system ends with a fermata over the final note and a signature.



4

*ruhig*

Handwritten musical score for the first system, measures 1-2. It features a grand staff with treble and bass clefs. The time signature is 4/4. The first measure contains a circled 'P' and a circled '4'. The second measure contains a circled '4'. The music consists of chords and single notes with slurs and accents.

*ruhig* *dim.*

Handwritten musical score for the second system, measures 3-4. It features a grand staff with treble and bass clefs. The music continues with chords and single notes, including a circled 'P' and a circled '4' in the first measure. The second measure has a circled '4'. The system ends with a double bar line and a fermata.

*loto* *loto*

Handwritten musical score for the third system, measures 5-6. It features a grand staff with treble and bass clefs. The music continues with chords and single notes, including a circled 'P' and a circled '4' in the first measure. The second measure has a circled '4'. The system ends with a double bar line and a fermata.

8

Handwritten musical score for the first system. It consists of a grand staff with treble and bass clefs. The music includes notes, rests, and dynamic markings such as *p* and *f*. A large slur covers the first two measures.

Handwritten musical score for the second system. It consists of a grand staff with treble and bass clefs. The music includes notes, rests, and dynamic markings such as *mf*, *f*, and *p*. A large slur covers the first two measures. The text "rit / dim" is written above the staff.

2. x v. c.  
 32

Handwritten musical score for the third system. It consists of a grand staff with treble and bass clefs. The music includes notes, rests, and dynamic markings such as *pp*. A large slur covers the first two measures.

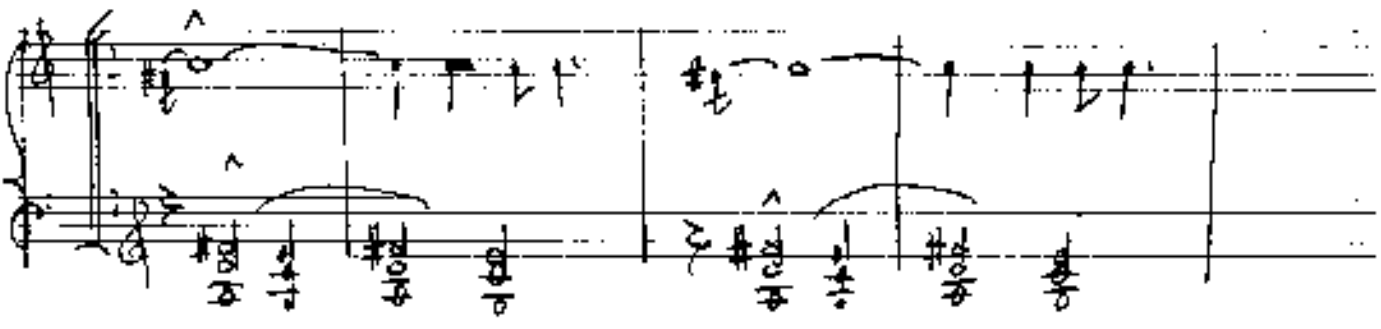
5

*March*

Handwritten musical notation for the first system. The treble staff begins with a treble clef, a key signature of one flat (B-flat), and a 4/4 time signature. The first measure contains a half note G4. The second measure contains a half note A4. The third measure contains a half note B4. The fourth measure contains a half note C5. The fifth measure contains a half note B4. The sixth measure contains a half note A4. The seventh measure contains a half note G4. The eighth measure contains a half note F4. The bass staff contains a whole rest in the first measure, followed by a series of eighth notes in the second measure: G3, F3, E3, D3. The third measure contains a whole note G3. The fourth measure contains a whole note F3. The fifth measure contains a whole note E3. The sixth measure contains a whole note D3. The seventh measure contains a whole note C3. The eighth measure contains a whole note B2.

Handwritten musical notation for the second system. The treble staff begins with a treble clef, a key signature of one flat, and a 4/4 time signature. The first measure contains a half note G4. The second measure contains a half note A4. The third measure contains a half note B4. The fourth measure contains a half note C5. The fifth measure contains a half note B4. The sixth measure contains a half note A4. The seventh measure contains a half note G4. The eighth measure contains a half note F4. The bass staff contains a whole rest in the first measure, followed by a series of eighth notes in the second measure: G3, F3, E3, D3. The third measure contains a whole note G3. The fourth measure contains a whole note F3. The fifth measure contains a whole note E3. The sixth measure contains a whole note D3. The seventh measure contains a whole note C3. The eighth measure contains a whole note B2.

Handwritten musical notation for the third system. The treble staff begins with a treble clef, a key signature of one flat, and a 4/4 time signature. The first measure contains a half note G4. The second measure contains a half note A4. The third measure contains a half note B4. The fourth measure contains a half note C5. The fifth measure contains a half note B4. The sixth measure contains a half note A4. The seventh measure contains a half note G4. The eighth measure contains a half note F4. The bass staff contains a whole rest in the first measure, followed by a series of eighth notes in the second measure: G3, F3, E3, D3. The third measure contains a whole note G3. The fourth measure contains a whole note F3. The fifth measure contains a whole note E3. The sixth measure contains a whole note D3. The seventh measure contains a whole note C3. The eighth measure contains a whole note B2.



6

ending

Handwritten musical notation for the first system. It features a treble clef and a circled '6' with a '4' below it. A circled '1' is also present. The notation includes a series of notes with stems and beams, and a circled '1' with a '4' below it.

Handwritten musical notation for the second system. It features a treble clef and a circled '1'. The notation includes a series of notes with stems and beams, and a circled '1' with a '4' below it.

Handwritten musical notation for the third system. It features a treble clef and a circled '1'. The notation includes a series of notes with stems and beams, and a circled '1' with a '4' below it.

(beat)

(2)

F

Mod.

(2+7)  
(4+H)

cuess.

out...

*brist*

*lento*

*mit dem*

*Tempo* (*guc mit - dem*)