

L.v. BEETHOVEN



W.A. MOZART



NOTENHEFT

F. SCHUBERT



J. HAYDN



J. STRAUSS



(7)
Salon-Stücke für Elektr. Orgel

1969
Adolf Scherbaum

1

langsam (frei -

Handwritten musical notation for the first system, featuring treble and bass clefs, a 3/4 time signature, and a key signature of one sharp (F#). The notation includes chords and melodic lines with various dynamics and articulations. A large 'V' mark is written below the first measure, and another 'V' is below the third measure.

Handwritten musical notation for the second system, featuring treble and bass clefs. The notation includes chords and melodic lines. A 'p' dynamic marking is present below the first measure, and a large 'V' mark is written below the second measure.

poco rit

Handwritten musical notation for the third system, featuring treble and bass clefs. The notation includes chords and melodic lines. A circled 'f' dynamic marking is present below the first measure, and a large 'V' mark is written below the second measure. The number '77' is written at the end of the system.

Handwritten musical notation on a grand staff. The right hand part features a melodic line with notes marked with accidentals (sharps and naturals) and slurs. The left hand part consists of chords and single notes. A circled '2' is written in the left margin. The word 'rit' with an arrow is written above the right hand part.

Handwritten musical notation on a grand staff. The right hand part has a melodic line with slurs and notes marked with flats. The left hand part has chords and notes, some with flats. A circled '2' is written in the left margin.

Handwritten musical notation on a grand staff. The right hand part has a melodic line with notes marked with flats and slurs. The left hand part has chords and notes. A circled '2' is written in the left margin. The word 'rit' is written above the right hand part. The word 'D.C. al' is written above the final measure.

Handwritten musical notation on a grand staff. The right hand part has a melodic line with notes marked with sharps and naturals. The left hand part has chords and notes. A circled '2' is written in the left margin.

2

ruhig

mit ♩ Tempo

4

Handwritten musical notation for the first system. The treble clef staff contains notes with accidentals (sharps) and rests. The bass clef staff contains chords and notes. Dynamic markings include 'f' and 'pp'. There are also some handwritten numbers like '9' and '8'.

Handwritten musical notation for the second system. The treble clef staff has notes with accidentals and rests. The bass clef staff has notes and rests. Dynamic markings include 'pp'. There is a handwritten note 'rit + dim' above the staff.

Handwritten musical notation for the third system. The treble clef staff has notes with accidentals and rests. The bass clef staff has notes and rests. Dynamic markings include 'pp'. There is a circled 'p' in the treble staff and 'd.c. al' above the treble staff.

Handwritten musical notation for the fourth system. The treble clef staff has notes with accidentals and rests. The bass clef staff has notes and rests. Dynamic markings include 'pp'. There is a circled 'p' in the treble staff and 'c' above the treble staff.

3

grosche |

Handwritten musical notation for the first system, measures 1-4. The piece is in 4/4 time. The first two measures contain whole rests in the treble clef and chords in the bass clef. The third measure has a whole rest in the treble clef and a chord in the bass clef. The fourth measure has a whole rest in the treble clef and a chord in the bass clef. A double bar line follows, then a repeat sign, and the fifth measure has a melodic line in the treble clef and a chord in the bass clef.

Handwritten musical notation for the second system, measures 5-8. The fifth measure has a melodic line in the treble clef and a chord in the bass clef. The sixth measure has a melodic line in the treble clef and a chord in the bass clef. The seventh measure has a melodic line in the treble clef and a chord in the bass clef. The eighth measure has a melodic line in the treble clef and a chord in the bass clef.

Handwritten musical notation for the third system, measures 9-12. The ninth measure has a melodic line in the treble clef and a chord in the bass clef. The tenth measure has a melodic line in the treble clef and a chord in the bass clef. The eleventh measure has a melodic line in the treble clef and a chord in the bass clef. The twelfth measure has a melodic line in the treble clef and a chord in the bass clef.

6

4

ruhig

ruhig

ruhig

8

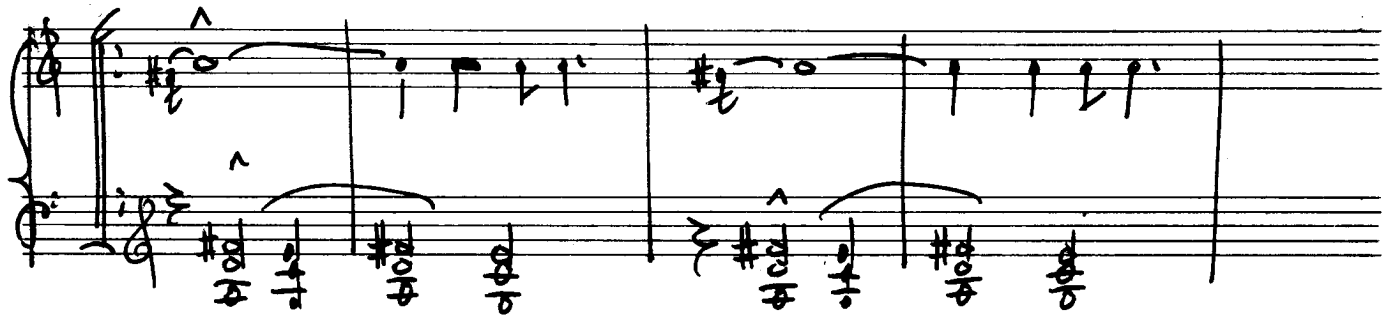
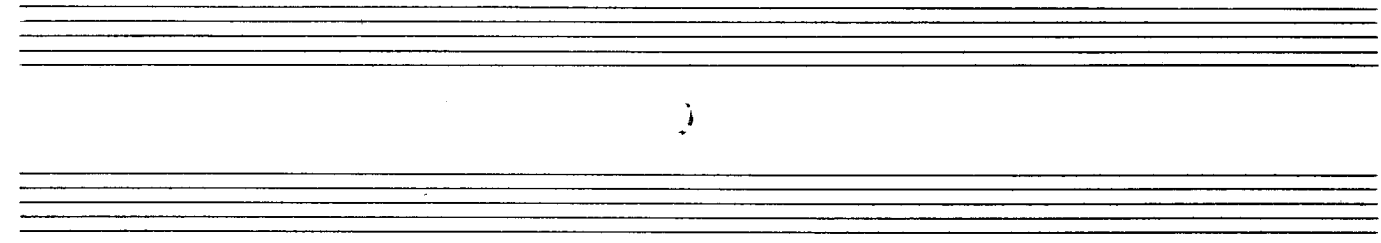
Handwritten musical notation for the first system. It consists of two staves. The upper staff is in treble clef and contains several measures of music with notes, rests, and dynamic markings. A circled 'p' is written at the beginning. The lower staff is in bass clef and contains corresponding notes and rests. A large slur spans across both staves. Dynamic markings 'f' and '> p' are visible below the staves.

Handwritten musical notation for the second system. It features a treble clef staff with a vocal line and a bass clef staff. The vocal line includes the lyrics "mit / dir" written above it. The notation includes notes, rests, and dynamic markings such as 'mf', 'f', and 'p'. A circled 'p' is also present. The system concludes with a double bar line and some additional markings.

Handwritten musical notation for the third system. It shows a treble clef staff with notes and rests, and a bass clef staff. The bass staff features a large, wavy line, possibly representing a tremolo or a specific performance technique. The system ends with a double bar line.

5

March



6

ruhig

Handwritten musical notation for the first system. It features a treble clef and a 6/4 time signature. A circled 'p' indicates a piano dynamic. The notation includes several notes with stems, some with accidentals (sharps and flats), and a circled 'p' dynamic marking. There are also some handwritten annotations like '9' and 'b9'.

Handwritten musical notation for the second system. It features a treble clef and various notes with stems, some with accidentals (sharps and flats). There are dynamic markings 'f' and 'p' with arrows indicating changes. A circled 'p' is also present. The notation includes some handwritten annotations like '9' and 'b9'.

Handwritten musical notation for the third system. It features a treble clef and various notes with stems, some with accidentals (sharps and flats). There is a dynamic marking 'f' with an arrow. The notation includes some handwritten annotations like '9' and 'b9'. At the end of the system, there is a handwritten note 'mit...'. There is also a circled 'p' at the beginning of the system.

Handwritten musical notation on two staves. The upper staff contains notes with accidentals and slurs, with the word "(best)" written above the first measure and "out..." above the second. The lower staff contains notes with accidentals and slurs.

Handwritten musical notation on two staves. The upper staff contains notes with accidentals and slurs, with the word "(out)" written above the second measure. The lower staff contains notes with accidentals and slurs.

Handwritten musical notation on two staves. The upper staff contains notes with accidentals and slurs, with the word "(out)" written above the second measure. The lower staff contains notes with accidentals and slurs.

7

Mod.

(2+7)
(4+7)

cresc.

rit.

buen

rit

This system contains handwritten musical notation. The upper staff is in treble clef and begins with a circled sharp sign (#). It contains several chords, including a triad with a sharp and a flat, and a complex chord with multiple sharps and flats. The lower staff is in bass clef and features a long melodic line with various intervals and a final flourish.

Lento

This system contains handwritten musical notation. The upper staff is in treble clef and starts with a circled 'p' (piano) dynamic marking. It features a series of chords and a melodic line with a slur. The lower staff is in bass clef and contains chords and a melodic line with a slur. There are dynamic markings like 'f' and 'p' throughout.

rit dim

This system contains handwritten musical notation. The upper staff is in treble clef and starts with a circled 'p' dynamic marking. It features a series of chords and a melodic line with a slur. The lower staff is in bass clef and contains chords and a melodic line with a slur. There are dynamic markings like 'f' and 'p' throughout.

Tempo

(rit - dim)

This system contains handwritten musical notation. The upper staff is in treble clef and starts with a circled 'p' dynamic marking. It features a series of chords and a melodic line with a slur. The lower staff is in bass clef and contains chords and a melodic line with a slur. There are dynamic markings like 'f' and 'p' throughout.