

L.v. BEETHOVEN



W.A. MOZART



# NOTENHEFT

F. SCHUBERT



J. HAYDN



J. STRAUSS



FORNAT

Sonate in H

für

Flöte — 3 Posunen (Jazz)

Baß + Schlagwerk — (Jazz)

(Klavier) (Jazz) Piano

Adolf Scherbaum

1969

1

(1) Mod. andante

Handwritten musical score for the first system, featuring Flute (Fl.), Piccolo (Pic.), Violins (Vln.), Viola (Vla.), and Clarinet (Klarinet). The score is written in a single system with five staves. The Flute part has a circled '1' above it. The Piccolo part has 'pp' and 'con sord.' written below it. The Violin and Viola parts have 'pp' written below them. The Clarinet part has a circled 'p' below it. The music is in a single system with five staves, showing various notes, rests, and dynamic markings.

Handwritten musical score for the second system, featuring Flute (Fl.), Piccolo (Pic.), Violins (Vln.), Viola (Vla.), and Clarinet (Klarinet). The score is written in a single system with five staves. The Flute part has a circled '1' above it. The Piccolo part has 'pp' and 'con sord.' written below it. The Violin and Viola parts have 'pp' written below them. The Clarinet part has a circled 'p' below it. The music is in a single system with five staves, showing various notes, rests, and dynamic markings.

1 2

CODA

Handwritten musical score for the first system, featuring piano, violin, and cello parts. The piano part includes dynamics such as  $f$ ,  $fp$ , and  $pp$ . The violin and cello parts are marked with  $p$ . The system concludes with a circled  $p$  and a CODA symbol.

$(1+2+3)$   
 $(2+3+4)$

Handwritten musical score for the second system, continuing the piano, violin, and cello parts. The piano part includes dynamics such as  $pp$  and  $f$ . The violin and cello parts are marked with  $p$ . The system concludes with a circled  $pp$ .

Handwritten musical score for the first system. The top staff is in treble clef and contains a melodic line with several slurs and accents. The bottom two staves are in grand staff (treble and bass clefs) and contain piano accompaniment with chords and some melodic fragments. The system is divided into two measures by a vertical bar line.

Handwritten musical score for the second system. The top staff continues the melodic line from the first system, featuring more complex rhythmic patterns and slurs. The grand staff below provides the piano accompaniment, including chords and bass lines. The system is divided into two measures by a vertical bar line.

Handwritten musical score for the first system. It consists of a piano part and a vocal line. The piano part is written on a grand staff (treble and bass clefs) and includes a key signature of one sharp (F#) and a time signature of 4/4. The vocal line is on a single staff with a soprano clef and a key signature of one sharp. The score is divided into two measures by a vertical bar line. The first measure shows a complex piano accompaniment with many notes and a vocal line starting with a few notes. The second measure continues the piano accompaniment and the vocal line. There are various musical notations such as slurs, accents, and dynamic markings like 'f'.

③

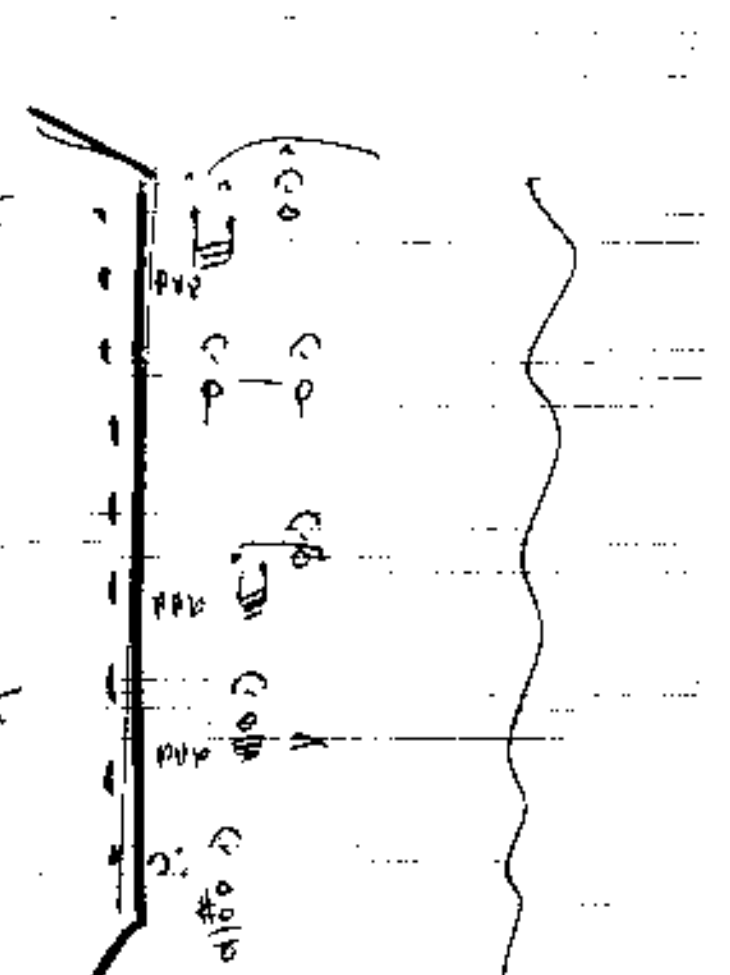
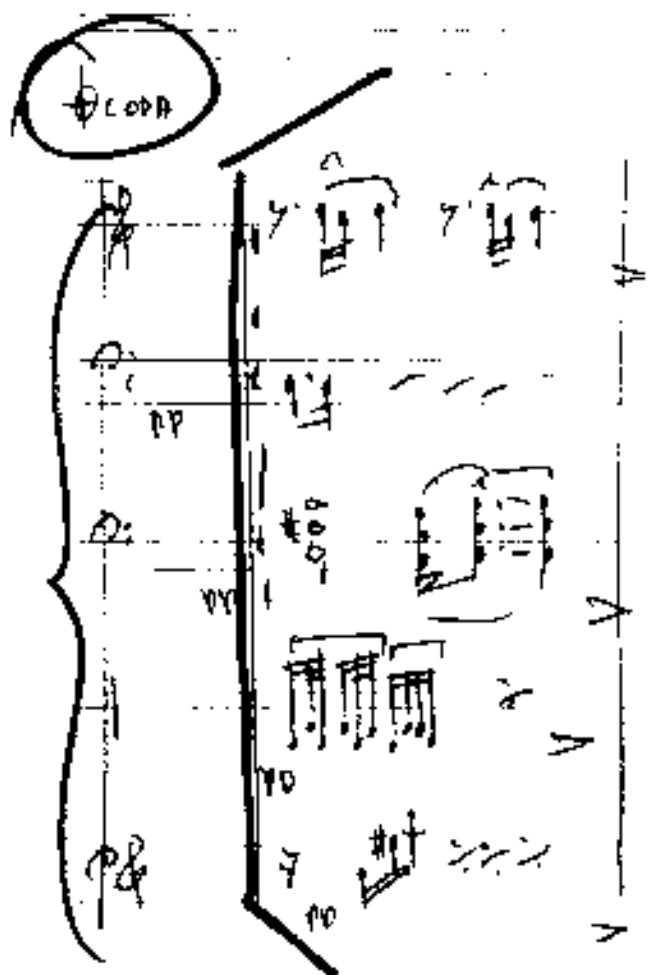
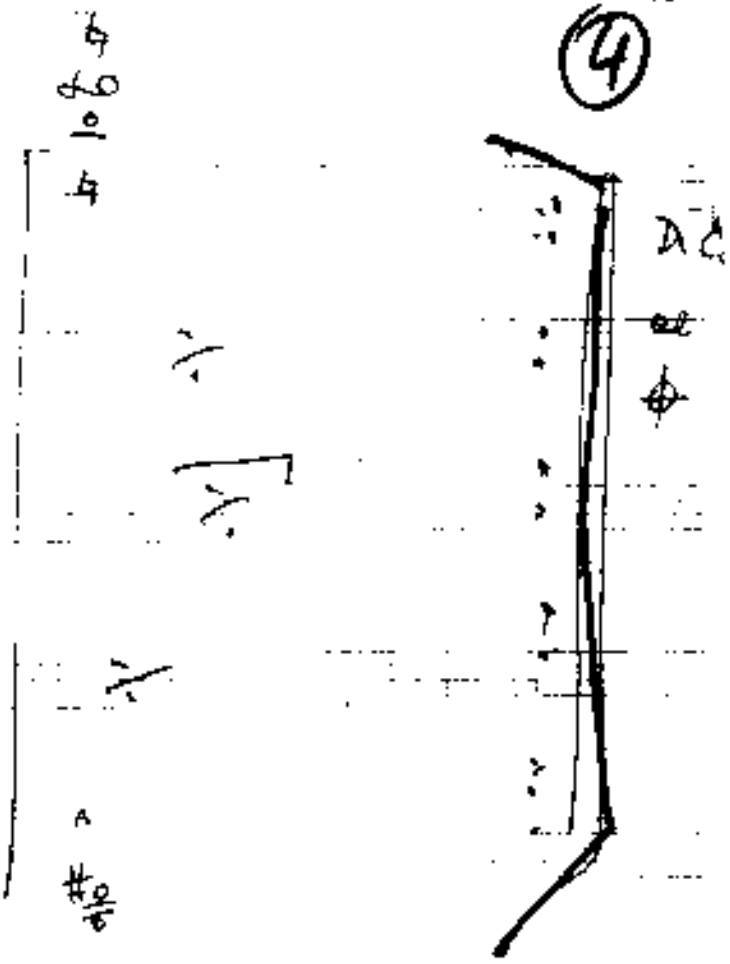
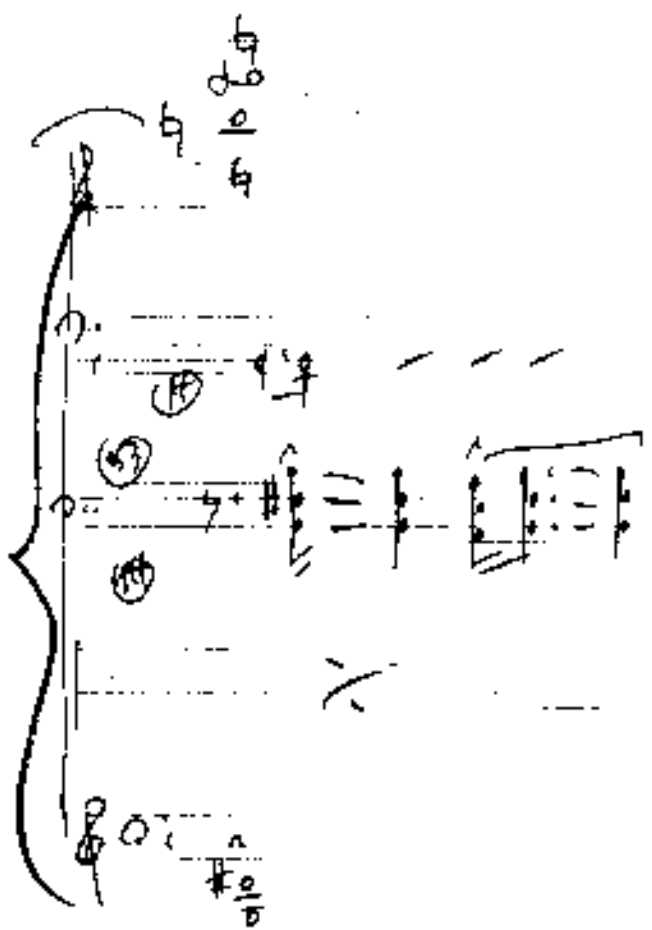
Handwritten musical score for the second system, labeled with a circled '3'. It consists of a piano part and a vocal line. The piano part is written on a grand staff (treble and bass clefs) and includes a key signature of one sharp (F#) and a time signature of 4/4. The vocal line is on a single staff with a soprano clef and a key signature of one sharp. The score is divided into two measures by a vertical bar line. The first measure shows a complex piano accompaniment with many notes and a vocal line starting with a few notes. The second measure continues the piano accompaniment and the vocal line. There are various musical notations such as slurs, accents, and dynamic markings like 'f'.

Handwritten musical score for the first system. It consists of five staves. The top staff is a treble clef with a melodic line and some slurs. The second staff is a bass clef with notes and rests. The third staff is a bass clef with notes and rests, featuring a circled number '13'. The fourth staff is a treble clef with a melodic line. The fifth staff is a bass clef with chord diagrams and notes. There are various annotations like 'p', 'f', and circled numbers throughout.

Handwritten musical score for the second system. It consists of five staves. The top staff is a treble clef with a melodic line and slurs. The second staff is a bass clef with notes and rests. The third staff is a bass clef with notes and rests. The fourth staff is a treble clef with a melodic line. The fifth staff is a bass clef with chord diagrams and notes. There are various annotations like 'p', 'f', and circled numbers throughout.

(2tx dir - - - - -)

④





And.

Handwritten musical score for the first system, consisting of three staves. The top staff has a treble clef and a '2' written above it. The middle staff has a bass clef and a '2' written above it. The bottom staff has a bass clef and a circled '2' written below it. The music is in 2/4 time and includes various notes, rests, and dynamic markings. A circled '3' is written above the first measure of the top staff, and a circled '4' is written below the first measure of the bottom staff. A vertical line with a slash is drawn between the first and second measures of all staves.

Handwritten musical score for the second system, consisting of three staves. The top staff has a treble clef and a circled '1' written below it. The middle staff has a bass clef and a circled '2' written below it. The bottom staff has a bass clef and a circled '3' written below it. The music is in 2/4 time and includes various notes, rests, and dynamic markings. A vertical line with a slash is drawn between the first and second measures of all staves.

Handwritten musical score for a piano piece, measures 92-95. The score is written on a grand staff with treble and bass clefs. Measure 92 is circled. The music features a melodic line in the right hand and a supporting line in the left hand. A fermata is placed over the final note of measure 95.

9

Handwritten musical score for a piano piece, measures 96-99. The score is written on a grand staff with treble and bass clefs. Measure 96 is circled. The music features a melodic line in the right hand and a supporting line in the left hand. A fermata is placed over the final note of measure 99.

Handwritten musical score for the first system. It consists of a grand staff with three staves: treble clef (top), alto clef (middle), and bass clef (bottom). The music is written in a key signature of one sharp (F#) and includes various rhythmic values, rests, and dynamic markings. A circled 'p' (piano) is visible in the middle staff. The notation includes slurs, accents, and some specific note heads.

(2)

Handwritten musical score for the second system, continuing the grand staff notation from the first system. It includes similar notation and dynamic markings. A circled '2' is written above the system. The notation includes slurs, accents, and some specific note heads.

Handwritten musical score for the first system. The notation includes a treble clef staff with complex chordal textures, a middle clef staff with sparse notes, and a bass clef staff with rhythmic notation. A circled '1' is present at the bottom left.

Handwritten musical score for the second system. The notation continues with complex textures in the treble clef staff and rhythmic notation in the bass clef staff. A circled '2' is present at the bottom left.

Handwritten musical score for the first system. It consists of a piano part (left) and a harp part (right). The piano part has three staves. The top staff has notes with dynamics  $f$  and  $p$ . The middle staff has notes with dynamics  $f$  and  $p$ . The bottom staff has notes with dynamics  $f$  and  $p$ . The harp part has three staves. The top staff has notes with dynamics  $f$  and  $p$ . The middle staff has notes with dynamics  $f$  and  $p$ . The bottom staff has notes with dynamics  $f$  and  $p$ . The harp part is marked with  $Hp$  and  $f$ .

③

Handwritten musical score for the second system. It consists of a piano part (left) and a harp part (right). The piano part has three staves. The top staff has notes with dynamics  $f$  and  $p$ . The middle staff has notes with dynamics  $f$  and  $p$ . The bottom staff has notes with dynamics  $f$  and  $p$ . The harp part has three staves. The top staff has notes with dynamics  $f$  and  $p$ . The middle staff has notes with dynamics  $f$  and  $p$ . The bottom staff has notes with dynamics  $f$  and  $p$ . The harp part is marked with  $Hp$  and  $f$ .

Handwritten musical score for the first system. The system consists of four staves. The top staff is in treble clef and contains a melodic line with notes and rests, including a circled '3' at the beginning. The second staff is in bass clef and contains a bass line with notes and rests. The third and fourth staves are also in bass clef and contain rhythmic patterns and notes. The system is enclosed in a large bracket on the left side.

Handwritten musical score for the second system. The system consists of four staves. The top staff is in treble clef and contains a melodic line with notes and rests, including a circled '4' at the end. The second staff is in bass clef and contains a bass line with notes and rests. The third and fourth staves are also in bass clef and contain rhythmic patterns and notes. The system is enclosed in a large bracket on the left side. There are annotations '1.', '2.', and '4.' at the top of the system. At the bottom of the system, there are markings '> dim' and two circled 'p' symbols.

sempre cresc. →

5

sempre cresc.

6

7

8

9

Handwritten musical score for measures 11 and 12. The score is written on four staves. Measure 11 is circled with the number 11. Measure 12 is circled with the number 12. The notation includes various notes, rests, and dynamic markings.

Handwritten musical score for measures 13, 14, and 15. The score is written on four staves. Measure 13 is circled with the number 13, measure 14 with 14, and measure 15 with 15. The notation includes notes, rests, and dynamic markings. In measure 15, there are handwritten annotations: "letzten 4 Takte" (last 4 measures) with an upward arrow, "normalis" with a downward arrow, and "letzten 4 Takte normalis" with a downward arrow.

Handwritten musical score for measure 16. The score is written on a single staff. Measure 16 is circled with the number 16. The notation includes notes, rests, and dynamic markings. The word "Solo" is written above the first measure, and "D.C. al" is written above the last measure. The word "dim" (diminuendo) is written below the staff in two places.



(wash accel. ---)

♩ C♯D#E

(4x)

Handwritten musical notation for the first system. It consists of a grand staff with a treble clef on the upper staff and a bass clef on the lower staff. The notation includes various notes, accidentals (sharps, flats, naturals), and dynamic markings such as *f* and *ff*. There are also some circled annotations and a large bracket on the left side of the staff.

Handwritten musical notation for the second system. It continues the piece with similar notation. The system ends with a large wavy line and the word "Fin". There are several circled annotations and a large bracket on the left side of the staff.