

Notenheft

Jazz - Sonate für

Piano - Baß + Schlagwerk

1970

Holger Scherba

No. 2 (2 Sätze).

(Ad. lib.) statt Piano =  
Flöte -  
Oboe -  
Klarin -  
Horn  
Fagott

quintupl (Mod. <sup>2</sup> tempo) Teil ①

Handwritten musical score for the first system, featuring three staves:

- Flauto** (Flute): Staff with a treble clef and a key signature of one flat (B-flat).
- Violoncello** (Cello): Staff with a bass clef and a key signature of one flat (B-flat).
- Violone** (Viola): Staff with a bass clef and a key signature of one flat (B-flat).

The music is in 5/4 time. The first measure contains a whole note chord in the cello and viola parts. The second measure features a melodic line in the flute and a rhythmic accompaniment in the cello and viola. The third and fourth measures continue the melodic and rhythmic patterns. The system concludes with a double bar line and repeat signs.

Handwritten musical score for the second system, featuring three staves:

- Flauto** (Flute): Staff with a treble clef and a key signature of one flat (B-flat).
- Violoncello** (Cello): Staff with a bass clef and a key signature of one flat (B-flat).
- Violone** (Viola): Staff with a bass clef and a key signature of one flat (B-flat).

The music continues from the first system. The first measure of this system includes a triplet of eighth notes in the flute part. The second measure features a triplet of eighth notes in the flute and a corresponding rhythmic pattern in the cello and viola. The third and fourth measures continue the melodic and rhythmic patterns. The system concludes with a double bar line and repeat signs.

4

3

6

8

Handwritten musical score for measures 9 and 10. The score is written on three staves: a treble clef staff at the top, a bass clef staff in the middle, and a grand staff (treble and bass clefs) at the bottom. Measure 9 contains a treble staff with a melodic line and a bass staff with a bass line. Measure 10 features a treble staff with a melodic line marked 'du' and a bass staff with a bass line. A circled measure number '9' is at the top center, and a circled measure number '10' is at the top right.

Handwritten musical score for measures 11 and 12. The score is written on three staves: a treble clef staff at the top, a bass clef staff in the middle, and a grand staff at the bottom. Measure 11 shows a treble staff with a melodic line and a bass staff with a bass line. Measure 12 features a treble staff with a melodic line and a bass staff with a bass line, including a circled 'p' dynamic marking. A circled measure number '11' is at the top center, and a circled measure number '12' is at the top right.

Handwritten musical score for measures 13 and 14. The score is written on three staves: a treble clef staff at the top, a bass clef staff in the middle, and a grand staff at the bottom. Measure 13 shows a treble staff with a melodic line and a bass staff with a bass line. Measure 14 features a treble staff with a melodic line and a bass staff with a bass line, including a circled 'p' dynamic marking. A circled measure number '13' is at the top center, and a circled measure number '14' is at the top right.

Handwritten musical notation for measures 15 and 16. Measure 15 features a treble clef with a piano (*pp*) dynamic and a series of notes with accents. Measure 16 continues the melodic line with a mezzo-piano (*mp*) dynamic. A circled measure number '15' is at the top, and a circled '16' is at the top right.

Handwritten musical notation for measures 17 and 18. Measure 17 shows a treble clef with a piano (*p*) dynamic and a series of notes. Measure 18 continues with a piano (*p*) dynamic. A circled measure number '17' is at the top, and a circled '18' is at the bottom left.

Handwritten musical notation for measures 19 and 20. Measure 19 features a treble clef with a piano (*p*) dynamic and a series of notes. Measure 20 continues with a piano (*p*) dynamic. A circled measure number '19' is at the top right, and a circled '20' is at the bottom left.

Handwritten musical notation for measures 19 and 20. Measure 19 features a treble clef, a key signature of one sharp (F#), and a melodic line with notes G4, A4, B4, C5, B4, A4, G4. Measure 20 features a bass clef and a melodic line with notes G3, F2, E2, D2, C2, B1, A1, G1. Dynamics include 'f' and 'pp'.

Handwritten musical notation for measures 21 and 22. Measure 21 shows a treble clef with a melodic line. Measure 22 shows a bass clef with notes G3, F2, E2, D2, C2, B1, A1, G1. Dynamics include 'f' and 'p'.

Handwritten musical notation for measures 23 and 24. Measure 23 shows a treble clef with notes G4, A4, B4, C5, B4, A4, G4. Measure 24 shows a bass clef with notes G3, F2, E2, D2, C2, B1, A1, G1. Dynamics include 'p'.

Handwritten musical score for three systems, numbered 24, 25, and 26.

**System 24:** Features a treble clef staff with a circled  $f$  dynamic marking and a circled  $p$  marking. The bass clef staff has a circled  $f$  marking. The system concludes with a circled number 24.

**System 25:** Features a treble clef staff with a circled  $f$  dynamic marking and a circled  $p$  marking. The bass clef staff has a circled  $f$  marking. The system concludes with a circled number 25.

**System 26:** Features a treble clef staff with a circled  $f$  dynamic marking and a circled  $p$  marking. The bass clef staff has a circled  $f$  marking. The system includes the instruction "accel." and concludes with a circled number 26.

**System 27:** Features a treble clef staff with a circled  $f$  dynamic marking and a circled  $p$  marking. The bass clef staff has a circled  $f$  marking. The system concludes with a circled number 27.



subit brevis

28

29

30

31

(poco rit)

32

Handwritten musical score for the first system. It consists of three staves. The top staff is for a piano (P), marked with a circled 'P' and a 'p' dynamic. The middle staff is for a grand piano (G), also marked with a circled 'P' and a 'p' dynamic. The bottom staff is for a grand piano (G), marked with a circled 'P' and a 'p' dynamic. The score includes notes, rests, and dynamic markings like 'ppp'. There are also some circled symbols at the top left.

Handwritten musical score for the second system. It consists of three staves. The top staff is for a piano (P), marked with 'Lento' and 'Pedal'. The middle staff is for a grand piano (G), marked with 'ppp'. The bottom staff is for a grand piano (G), marked with 'ppp'. The score includes notes, rests, and dynamic markings like 'ppp'. There are also some circled symbols at the top left.

Presto

2

Handwritten musical notation for the first system. It consists of three staves. The top staff has a treble clef and a key signature of one sharp (F#). The middle staff has a piano (p) dynamic marking. The bottom staff contains a series of notes, including eighth and sixteenth notes, with some slurs and accents.

Handwritten musical notation for the second system. It features a first ending bracket labeled '1' and a second ending bracket labeled '2'. The notation includes various note values and rests across three staves.

Handwritten musical notation for the third system. It features a third ending bracket labeled '3' and a fourth ending bracket labeled '4'. The notation includes various note values and rests across three staves.

5

6

Handwritten musical score for measures 5 and 6. The top staff is in treble clef with a key signature of one flat (B-flat). The bottom staff is in bass clef. Measure 5 contains a melodic line with a circled '5' and a dynamic marking 'f'. Measure 6 continues the melodic line with a circled '6'.

7

8

Handwritten musical score for measures 7 and 8. The top staff is in treble clef with a key signature of two sharps (F# and C#). The bottom staff is in bass clef. Measure 7 contains a melodic line with a circled '7' and a dynamic marking 'f'. Measure 8 continues the melodic line with a circled '8'.

9

10

Handwritten musical score for measures 9 and 10. The top staff is in treble clef with a key signature of two sharps (F# and C#). The bottom staff is in bass clef. Measure 9 contains a melodic line with a circled '9' and a dynamic marking 'fp'. Measure 10 continues the melodic line with a circled '10'.

11

12

13

14

15

15

Handwritten musical score for measures 16-17. The system consists of four staves. The top staff is a vocal line with notes and slurs. The second staff is a piano accompaniment with chords and notes. The third and fourth staves are bass lines with notes and rests. Measure numbers 16 and 17 are circled at the end of the system.

Handwritten musical score for measures 18-19. The system consists of four staves. The top staff is a vocal line with notes and slurs. The second staff is a piano accompaniment with chords and notes. The third and fourth staves are bass lines with notes and rests. Measure numbers 18 and 19 are circled at the end of the system.

Handwritten musical score for measures 20-21. The system consists of four staves. The top staff is a vocal line with notes and slurs. The second staff is a piano accompaniment with chords and notes. The third and fourth staves are bass lines with notes and rests. Measure numbers 20 and 21 are circled at the end of the system.

19

20

21

22

22

23

f =

Handwritten musical score for guitar, consisting of three systems of staves. Each system includes a treble clef staff with chords and melodic lines, and a bass clef staff with a "Solo" section. The systems are numbered 24, 26, and 28 in circles. System 24 includes a "Solo" section in the bass staff. System 26 includes a "Solo" section in the bass staff. System 28 includes a "Solo" section in the bass staff. The score is written on a grid of lines.



30

1.

Solo  
4/4  
dim

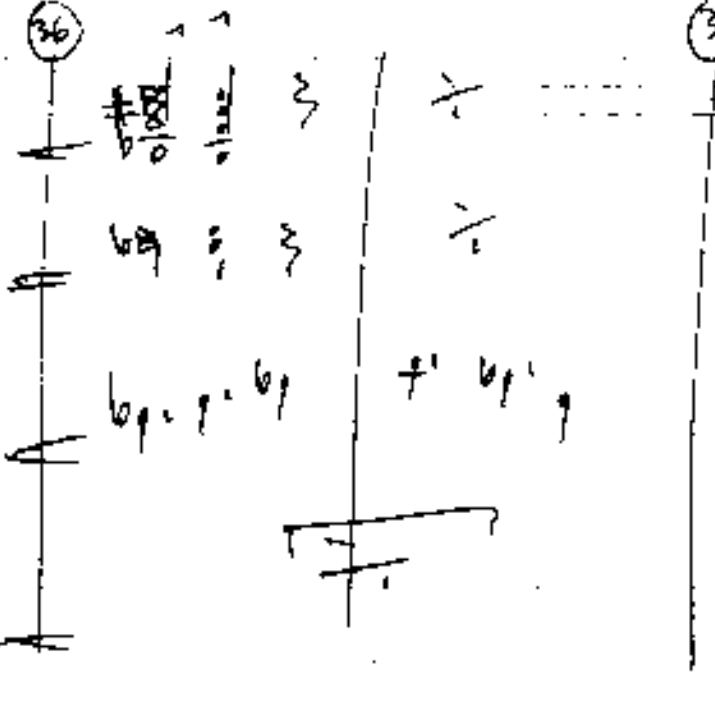
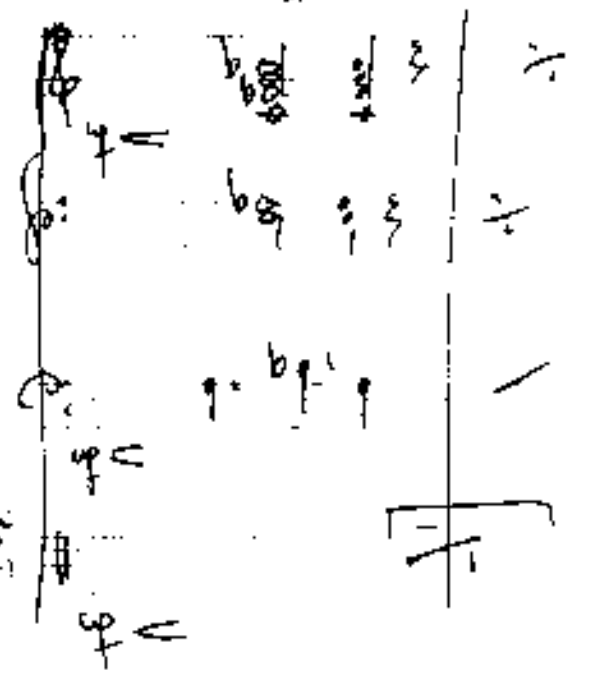
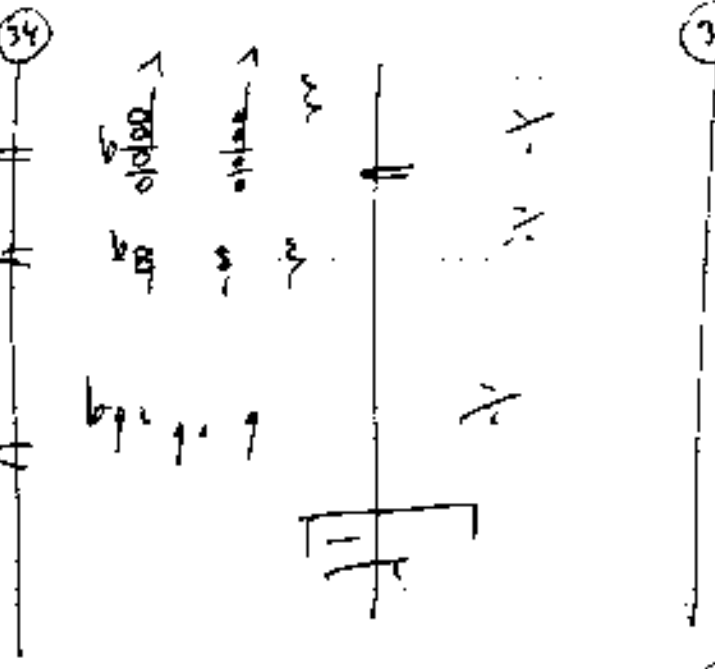
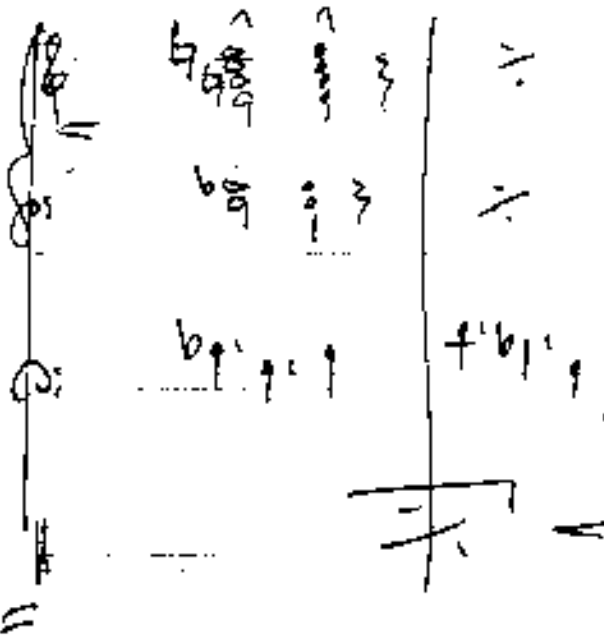
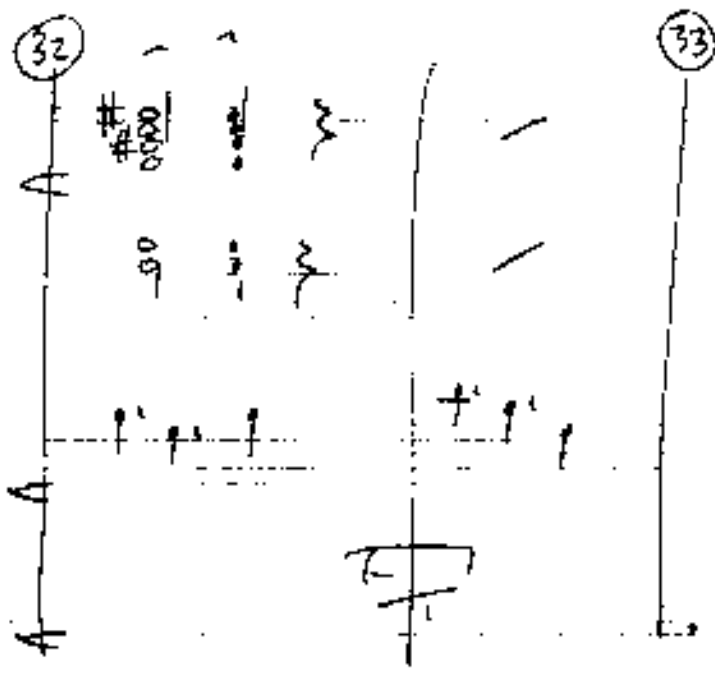
31

2.

Solo  
4/4  
dim

1 4 4 7  
7 7 7 7

pp cresce - sempre



Handwritten musical score for measures 37-39. Measure 37 includes a circled '37' and a circled '37' in the first staff. Measure 38 includes a circled '38' in the first staff. Measure 39 includes a circled '39' in the first staff. The score features treble and bass staves with various notes, rests, and dynamic markings such as  $p$  and  $f$ .

Handwritten musical score for measures 40-41. Measure 40 includes a circled '40' in the first staff and the word "brilliant" written in the first staff. Measure 41 includes a circled '41' in the first staff. The score features treble and bass staves with various notes, rests, and dynamic markings such as  $f$ .

Handwritten musical score for measures 42-43. Measure 42 includes a circled '42' in the first staff. Measure 43 includes a circled '43' in the first staff. The score features treble and bass staves with various notes, rests, and dynamic markings such as  $f$ .

Handwritten musical notation on a page with three systems of staves. The notation includes notes, rests, and various symbols.

**System 1 (Top):**

- Staff 1: Contains notes with accidentals (sharps and naturals) and a circled number **44** at the end.
- Staff 2: Contains notes with accidentals and a circled number **45** at the end.

**System 2 (Middle):**

- Staff 1: Contains notes with accidentals and a circled number **46** at the end.
- Staff 2: Contains notes with accidentals and a circled number **47** at the end.

**System 3 (Bottom):**

- Staff 1: Contains notes with accidentals and a circled number **48** at the end.
- Staff 2: Contains notes with accidentals and a circled number **49** at the end.

Additional notes and symbols are scattered throughout the page, including a circled **#** at the bottom left and various musical notations like  $\frac{b}{b}$ ,  $\frac{b}{b}$ , and  $\frac{b}{b}$ .

48

Solo

49

50

Solo (Schlagwerk)

51

Bass Solo

52

D. Capo  
al

CODA (3x wiederholen) (made over) → 53

the  
7#  
b

