

**Notenheft**

Jazz - Sonate für

Piano - Baß + Schlagwerk

1970

Adolf Scherbaum

[No. 2.] (2 Sätze).

(Ad. Lib.) statt Piano (= Flöte -  
Oboe -  
Klarin -  
Horn  
Fagott)

Mod. Teil ①  
quiet (langsam)

Piano  
Baß  
Schlagwerk

Handwritten musical score for measures 3 and 4. The system consists of four staves. The top staff is the right hand, and the bottom staff is the left hand. Measure 3 is marked with a circled '3' and contains a triplet of eighth notes in the right hand. Measure 4 is marked with a circled '4' and contains a triplet of eighth notes in the right hand. The music is in a key with one flat (B-flat major or D minor).

Handwritten musical score for measures 5 and 6. The system consists of four staves. Measure 5 is marked with a circled '5' and contains a triplet of eighth notes in the right hand. Measure 6 is marked with a circled '6' and contains a triplet of eighth notes in the right hand. The music is in a key with one flat (B-flat major or D minor).

Handwritten musical score for measures 7 and 8. The system consists of four staves. Measure 7 is marked with a circled '7' and contains a triplet of eighth notes in the right hand. Measure 8 is marked with a circled '8' and contains a triplet of eighth notes in the right hand. The music is in a key with two sharps (F# major or C# minor).

Handwritten musical score for measures 9 and 10. The system consists of three staves: a grand staff (treble and bass clefs) and a separate bass line. Measure 9 features a melodic line in the treble clef with notes G4, A4, B4, C5, and a bass line with notes G2, B1. Measure 10 continues the melodic line with notes D5, E5, F5, G5 and the bass line with notes G2, B1. A circled measure number '9' is at the top center, and a circled '10' is at the top right. There are handwritten annotations including '2 1 1' above the first measure and 'dis' above the second measure of measure 10.

Handwritten musical score for measures 11 and 12. The system consists of three staves. Measure 11 features a melodic line in the treble clef with notes G4, A4, B4, C5, and a bass line with notes G2, B1. Measure 12 continues the melodic line with notes D5, E5, F5, G5 and the bass line with notes G2, B1. A circled measure number '11' is at the top center, and a circled '12' is at the top right. There is a circled 'p' dynamic marking in the right-hand part of measure 12.

Handwritten musical score for measures 13 and 14. The system consists of three staves. Measure 13 features a melodic line in the treble clef with notes G4, A4, B4, C5, and a bass line with notes G2, B1. Measure 14 continues the melodic line with notes D5, E5, F5, G5 and the bass line with notes G2, B1. A circled measure number '13' is at the top center, and a circled '14' is at the top right. There are circled 'p' dynamic markings in the right-hand part of measure 13 and the left-hand part of measure 14.

Handwritten musical score for measures 14-16. The system consists of three staves: Treble Clef (top), Bass Clef (middle), and a lower staff (likely for piano accompaniment). Measure 14 starts with a piano (*pp*) dynamic and contains a melodic line with a slur and a fermata. Measure 15 features a circled measure number '15' and a circled cross symbol above the staff. Measure 16 ends with a circled measure number '16' and a circled cross symbol above the staff. The lower staff contains rhythmic notation with slurs and accents.

Handwritten musical score for measures 17-18. The system consists of three staves. Measure 17 begins with the instruction "etwas rascher" (somewhat faster) and contains a circled measure number '17' and a circled 'p' dynamic. Measure 18 contains a circled measure number '18' and a circled 'p' dynamic. The middle staff shows complex rhythmic patterns with slurs and accents. The lower staff contains rhythmic notation with slurs and accents.

Handwritten musical score for measures 19-20. The system consists of three staves. Measure 19 contains a circled measure number '19' and a circled 'p' dynamic. Measure 20 contains a circled measure number '20' and a circled 'f' dynamic. The middle staff shows complex rhythmic patterns with slurs and accents. The lower staff contains rhythmic notation with slurs and accents.



Handwritten musical score for measures 23-24. The system consists of four staves. The top staff is in treble clef with a circled measure number '23' and a circled dynamic marking 'fp'. The second staff is in treble clef with a circled dynamic marking 'p'. The third and fourth staves are in bass clef. The music features complex rhythmic patterns and dynamic markings.

Handwritten musical score for measures 25-26. The system consists of four staves. The top staff is in treble clef with a circled measure number '25'. The second staff is in treble clef with a circled dynamic marking 'p'. The third and fourth staves are in bass clef. The music continues with complex rhythmic patterns and dynamic markings.

Handwritten musical score for measures 27-29. The system consists of four staves. The top staff is in treble clef with a circled measure number '27' and a circled dynamic marking 'f'. The second staff is in treble clef with a circled dynamic marking 'p' and the word 'accel.' written below it. The third staff is in bass clef with a circled measure number '28' and the word 'accel.' written below it. The fourth staff is in bass clef with a circled measure number '29'. The music features complex rhythmic patterns and dynamic markings.



sehr breit

28

29

Handwritten musical score for measures 28 and 29. Measure 28 features a melodic line in the right hand with a circled 'ff' dynamic and a bass line with a circled 'ff' dynamic. Measure 29 continues the melodic and bass lines with various articulations and dynamics.

30

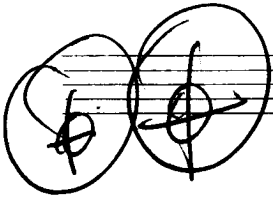
(poco rit)

31

Handwritten musical score for measures 30 and 31. Measure 30 has a circled '30' and the word 'die' above the melody. Measure 31 has a circled '31' and '(poco rit)' above the melody. Dynamics include 'p' and 'pp'.

32

Handwritten musical score for measure 32. The measure is mostly empty with some notes in the bass line and a circled '32' above the staff. A circled 'p' is in the bass line. Annotations include '2tr p.c.c.' and 'ad'.



Handwritten musical score for piano, featuring three staves. The top staff has a circled 'P' with an accent (>) and a fermata. The middle staff has a circled 'P' with an accent (>) and a fermata. The bottom staff has a circled 'P' with an accent (>) and a fermata. The score includes various musical notations such as notes, rests, and dynamic markings like 'ppp'.

Handwritten musical score for piano, featuring three staves. The top staff is labeled 'Canto' and includes notes with slurs and dynamic markings like 'ppp'. The middle staff is labeled 'Pedal' and includes notes with slurs and dynamic markings like 'ppp'. The bottom staff includes notes with slurs and dynamic markings like 'ppp'. The score includes various musical notations such as notes, rests, and dynamic markings like 'ppp'.

Presto

2

Handwritten musical score for the first system, measures 1-8. The score is written on three staves. The top staff is a treble clef with a key signature of one sharp (F#) and a common time signature. It contains whole rests for the first seven measures and a double bar line at the end. The middle staff is a bass clef with a key signature of one sharp (F#) and a common time signature. It starts with a circled 'P' and an equals sign, followed by a series of notes and rests. The bottom staff is a bass clef with a key signature of one sharp (F#) and a common time signature. It contains a series of notes and rests, including some beamed eighth notes.

Handwritten musical score for the second system, measures 9-12. The score is written on three staves. The top staff is a treble clef with a key signature of one sharp (F#) and a common time signature. It contains a melodic line with slurs and accents, marked with circled numbers 1 and 2. The middle staff is a bass clef with a key signature of one sharp (F#) and a common time signature. It contains a series of notes and rests. The bottom staff is a bass clef with a key signature of one sharp (F#) and a common time signature. It contains a series of notes and rests.

Handwritten musical score for the third system, measures 13-16. The score is written on three staves. The top staff is a treble clef with a key signature of one sharp (F#) and a common time signature. It contains a melodic line with slurs and accents, marked with circled numbers 3 and 4. The middle staff is a bass clef with a key signature of one sharp (F#) and a common time signature. It contains a series of notes and rests. The bottom staff is a bass clef with a key signature of one sharp (F#) and a common time signature. It contains a series of notes and rests.

5

6

7

8

9

10

Handwritten musical score for measures 11 and 12. The system consists of three staves: a treble clef staff with a melodic line, a bass clef staff with chords and bass notes, and a grand staff with a bass line. Measure 11 is circled at the top. Measure 12 is circled at the top right. The music features various accidentals and slurs.

Handwritten musical score for measures 13 and 14. The system consists of three staves: a treble clef staff with a melodic line, a bass clef staff with chords and bass notes, and a grand staff with a bass line. Measure 13 is circled at the top. Measure 14 is circled at the top right. The music features various accidentals and slurs.

Handwritten musical score for measure 15. The system consists of three staves: a treble clef staff with a melodic line, a bass clef staff with chords and bass notes, and a grand staff with a bass line. Measure 15 is circled at the top. The music features various accidentals and slurs.

Handwritten musical score for measures 16-17. The system includes a grand staff with piano (p) and forte (f) dynamics. Measure 16 features a melodic line in the right hand with accents and a bass line with quarter notes. Measure 17 continues the melodic line with a fermata and a bass line with rests. Measure 18 shows a melodic line with a fermata and a bass line with rests. Measure 19 features a melodic line with a fermata and a bass line with rests.

Handwritten musical score for measures 18-19. The system includes a grand staff with piano (p) and forte (f) dynamics. Measure 18 features a melodic line in the right hand with accents and a bass line with quarter notes. Measure 19 continues the melodic line with a fermata and a bass line with rests. Measure 20 shows a melodic line with a fermata and a bass line with rests. Measure 21 features a melodic line with a fermata and a bass line with rests.

Handwritten musical score for measures 20-21. The system includes a grand staff with piano (p) and forte (f) dynamics. Measure 20 features a melodic line in the right hand with accents and a bass line with quarter notes. Measure 21 continues the melodic line with a fermata and a bass line with rests. Measure 22 shows a melodic line with a fermata and a bass line with rests. Measure 23 features a melodic line with a fermata and a bass line with rests.

Handwritten musical score for measures 19 and 20. The system consists of five staves. The top staff is the melody, starting with measure 19 and ending with measure 20. The second staff contains piano accompaniment with chords and dynamics like  $pp$ . The third staff shows a bass line. The bottom two staves are empty.

Handwritten musical score for measures 21 and 22. The system consists of five staves. The top staff is the melody, starting with measure 21 and ending with measure 22. The second staff contains piano accompaniment with chords and dynamics like  $pp$ . The third staff shows a bass line. The bottom two staves are empty.

Handwritten musical score for measures 23 and 24. The system consists of five staves. The top staff is the melody, starting with measure 23 and ending with measure 24. The second staff contains piano accompaniment with chords and dynamics like  $f$ . The third staff shows a bass line. The bottom two staves are empty.

Handwritten musical score for piano and drums, measures 24-29. The score is written on three systems of staves. Each system includes a grand staff (treble and bass clefs) and a drum set staff. Measure numbers 24, 25, 26, 27, 28, and 29 are circled. The notation includes chords, melodic lines, and rhythmic markings. The word "Solo" is written in the drum staff of measures 25, 26, 28, and 29. There are various annotations such as "3", "8", and "11" above notes, and "b" and "#" for accidentals. A circled cross symbol is present at the end of measure 29.



1.

30

Solo  
ff > din

2.

31

Solo  
ff > din

1 9 9 7  
7 7 7 7

pp  $\leftarrow$  cresc. - sempre

Handwritten musical score for measures 32 and 33. The score is written on four staves: Treble Clef (top), Bass Clef (second), Bass Clef (third), and Bass Clef (bottom). Measure 32 is circled at the top. The music features complex chords and melodic lines. Dynamics include *pp* and *cresc.*. There are handwritten annotations such as accents (^) and slurs. Measure 33 is also circled at the top.

Handwritten musical score for measures 34 and 35. The score is written on four staves: Treble Clef (top), Bass Clef (second), Bass Clef (third), and Bass Clef (bottom). Measure 34 is circled at the top. The music continues with complex chords and melodic lines. Dynamics include *pp* and *cresc.*. There are handwritten annotations such as accents (^) and slurs. Measure 35 is also circled at the top.

Handwritten musical score for measures 36 and 37. The score is written on four staves: Treble Clef (top), Bass Clef (second), Bass Clef (third), and Bass Clef (bottom). Measure 36 is circled at the top. The music continues with complex chords and melodic lines. Dynamics include *pp* and *cresc.*. There are handwritten annotations such as accents (^) and slurs. Measure 37 is also circled at the top.

Handwritten musical score for measures 37-39. The system consists of three staves: Treble Clef (top), Bass Clef (middle), and a lower staff (likely for a second Bass Clef or Cello/Double Bass). Measure 37 includes a circled '37' and a circled 'p' (piano) dynamic marking. Measure 38 includes a circled '38' and a circled 'f' (forte) dynamic marking. Measure 39 includes a circled '39'.

Handwritten musical score for measures 40-41. The system consists of three staves. Measure 40 includes a circled '40' and a circled 'f' (forte) dynamic marking. Measure 41 includes a circled '41' and the word 'brilliant' written in the Treble Clef staff. The notation includes various chords and melodic lines across the staves.

Handwritten musical score for measures 42-43. The system consists of three staves. Measure 42 includes a circled '42' and a circled 'f' (forte) dynamic marking. Measure 43 includes a circled '43'.

Handwritten musical notation for measures 44 and 45. The system consists of three staves. Measure 44 (circled) shows a treble clef staff with a key signature of one sharp (F#) and a bass clef staff with a key signature of one flat (Bb). Measure 45 (circled) continues the notation with a treble clef staff and a bass clef staff. The notation includes various notes, rests, and accidentals.

Handwritten musical notation for measures 46 and 47. The system consists of three staves. Measure 46 (circled) shows a treble clef staff with a key signature of two flats (Bb, Eb) and a bass clef staff with a key signature of two flats (Bb, Eb). Measure 47 (circled) continues the notation with a treble clef staff and a bass clef staff. The notation includes various notes, rests, and accidentals.

Handwritten musical notation for measures 48 and 49. The system consists of three staves. Measure 48 (circled) shows a treble clef staff with a key signature of one flat (Bb) and a bass clef staff with a key signature of one flat (Bb). Measure 49 (circled) continues the notation with a treble clef staff and a bass clef staff. The notation includes various notes, rests, and accidentals.

48

49

50

Solo (Schlagwerk)

51

Baß Solo

52

D. Capo  
al

CODA (3x wiederholen) (made or cue) → 53

Solo

(gestrichelt)

lunga

8

8

Padrol

2 2 7 2 4 1 4 7

freies Solo  
mit

(Lantern  
Abstrak)