

Teile 1970
für Orgel

Nachherh
Holt Soherbaum

1. 1. 1.

(Die Reihenfolge der einzelnen
Teile — sind angegeben)

(aber der Solist kann auch nach
eigenem Ermessen die Reihenfolge
der Teile bestimmen).

Liz. 1970
Steph Scherbaum

Teil 2

breit

Handwritten musical score for the first system of 'Teil 2'. It features a grand staff with treble and bass clefs. The right hand has a treble clef and a sharp key signature. The left hand has a bass clef and a sharp key signature. The music consists of a melodic line in the right hand and a bass line in the left hand. Above the right hand, there are handwritten notes 'b', 'b', 'a', and '4 4 4 4'. Above the left hand, there are handwritten notes '4 4 4 4'. The system ends with a double bar line.

Handwritten musical score for the second system of 'Teil 2'. It features a grand staff with treble and bass clefs. The right hand has a treble clef and a sharp key signature. The left hand has a bass clef and a sharp key signature. The music consists of a melodic line in the right hand and a bass line in the left hand. Above the right hand, there are handwritten notes '7 7 7 7'. Above the left hand, there are handwritten notes '7 7 7 7'. The system ends with a double bar line.

Handwritten musical score for the third system of 'Teil 2'. It features a grand staff with treble and bass clefs. The right hand has a treble clef and a sharp key signature. The left hand has a bass clef and a sharp key signature. The music consists of a melodic line in the right hand and a bass line in the left hand. Above the right hand, there are handwritten notes '7 7 7 7'. Above the left hand, there are handwritten notes '7 7 7 7'. The system ends with a double bar line.

Two empty grand staves at the bottom of the page, each consisting of a treble clef staff and a bass clef staff.

Handwritten musical score for two systems. Each system consists of three staves: a treble clef staff with chords and accidentals, a middle staff with a melodic line, and a bass clef staff with a bass line. The first system includes a 'collo' marking. The second system ends with a double bar line and a circled 'p.p.' marking.

(folgt Teil I) dann Teil II auf ♯

Handwritten musical score for a section labeled '(großes rit...'. It features three staves with chords and a melodic line. A circled 'Fine' marking is present at the end of the section.

Teil 3

lento

Handwritten musical notation for the first system. The treble clef staff contains a melodic line starting with a flat (Bb), followed by notes with sharps (C#, D#, E), and ending with notes with flats (F, Gb). The bass clef staff contains chords and fingerings: 7 7 7 7, b b, and 8. A dynamic marking 'pp' is present. A slur covers the entire system.

Handwritten musical notation for the second system. The treble clef staff continues the melodic line with notes and accidentals. The bass clef staff contains chords and fingerings: 7 7 7 7, #, and 9. A slur covers the entire system.

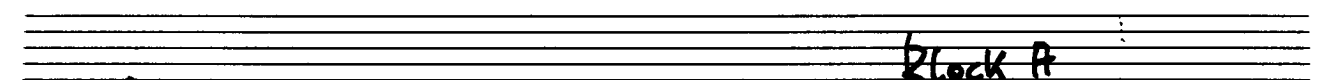
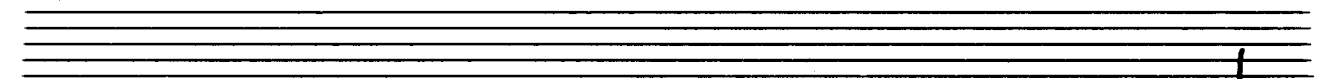
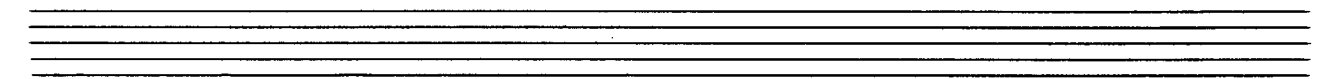
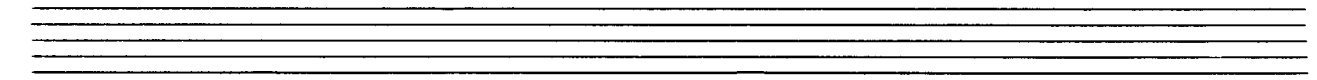
Handwritten musical notation for the third system. The treble clef staff features notes with flats and sharps. The bass clef staff contains chords and fingerings: 7 7, 7 7, and 9. A slur covers the entire system.

(2. x gv. yakt... + 12)

Teil IV.

Andante

The image displays five systems of handwritten musical notation for organ. Each system consists of two staves, a treble clef on the upper staff, and a bass clef on the lower staff. The notation includes various note values, rests, and dynamic markings. The piece is in a key with one sharp (F#) and a 4/4 time signature. The notation is dense and appears to be a working draft or a handwritten manuscript.



frei Block A

Handwritten musical notation on a grand staff. The upper staff contains a melodic line with a long slur over it. The lower staff contains a bass line with a few notes and a slur.

Handwritten musical notation on a grand staff. The upper staff has a treble clef and contains a series of notes with a slur. The lower staff has a bass clef and contains notes with a slur. The word "Block A" is written in parentheses between the staves.

Handwritten musical notation on a grand staff. The upper staff has a treble clef and contains notes with a slur. The lower staff has a bass clef and contains notes with a slur. The word "Block A" is written in parentheses between the staves. The letters "G.P." are written between the staves.

Handwritten musical notation on a grand staff. The upper staff has a treble clef and contains notes with a slur. The lower staff has a bass clef and contains notes with a slur. The word "Fine" is written in a circle above the lower staff.

Teil V. = Teil I.

Teil VI = Teil II auf ϕ)

Teil VII = Teil III mit $\left[\begin{array}{c} \vdots \\ \vdots \\ \vdots \end{array} \right]$

Teil VIII = Teil IV bis G.P. dann —
Teil IX.

Teil II.

Andagio

voll Werk

Handwritten musical score for the first system, featuring three staves. The top staff is in treble clef, the middle in alto clef, and the bottom in bass clef. The music consists of several measures with notes, rests, and dynamic markings. A handwritten note "(wie ein Choral)" is written below the bottom staff. The system concludes with a double bar line.

Handwritten musical score for the second system, featuring three staves. The music continues from the first system, with notes and rests across several measures. The system concludes with a double bar line.

Handwritten musical score for the third system, featuring three staves. The music consists of notes and rests. A large handwritten signature "Adolf Scherbaum" is written across the bottom of the system, along with the year "1970".