

2 Improvisationen für
Orgel 1970

Edell Schenk

Notenheft

Impressionen für

Orgel (über den Chorist:

(Herr-erkenne dich unser) No. 1

1870

Adolf Scherbaum

Molto so (appassionato)

Handwritten musical score for the first system. It consists of a piano staff (treble clef) and a bass staff (bass clef). The piano staff contains several notes with slurs and accents, and a circled key signature of two sharps (F# and C#). The bass staff contains a few notes, including a double sharp (F##) and a circled key signature of two sharps. The system is divided into measures by vertical bar lines.

Handwritten musical score for the second system. It continues the piano and bass staves from the first system. The piano staff features complex notation with many notes, slurs, and accents. The bass staff also contains complex notation with notes and slurs. The system is divided into measures by vertical bar lines.

(drängend) *acc.*

Handwritten musical score for the third system. It features a piano staff (treble clef) and a bass staff (bass clef). The piano staff contains a melodic line with notes and slurs, starting with a circled key signature of two flats (Bb and Eb). The bass staff contains a few notes. The system is divided into measures by vertical bar lines.

Handwritten musical notation for the first system. It consists of a treble clef, a key signature of one sharp (F#), and a 2/5 time signature. The melody is written on a single staff with a slur over two measures. The piano accompaniment is on a grand staff with a brace on the left and a slur under two measures. A handwritten '2/5' is written above the first measure of the melody.

Handwritten musical notation for the second system. It consists of a treble clef, a key signature of one flat (Bb), and a 2/5 time signature. The melody is written on a single staff with a slur over two measures. The piano accompaniment is on a grand staff with a brace on the left and a slur under two measures.

drängend

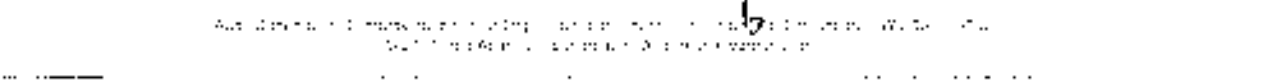
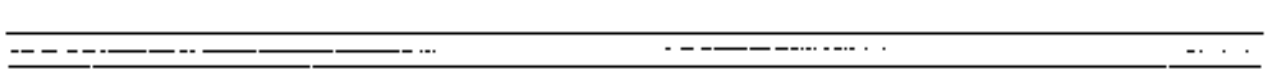
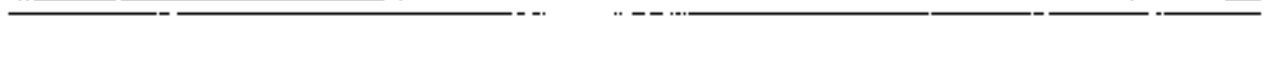
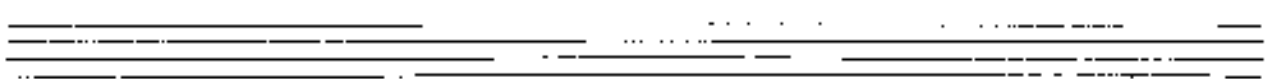
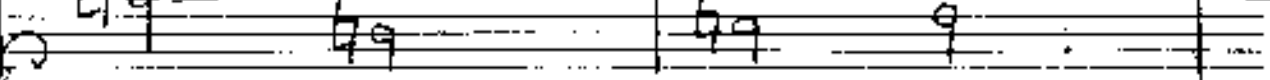
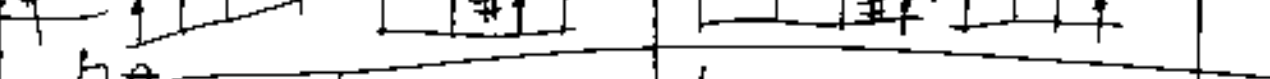
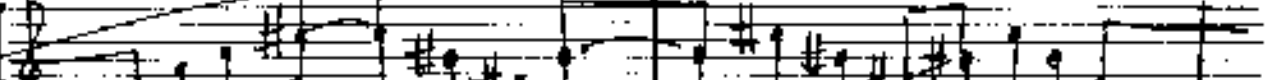
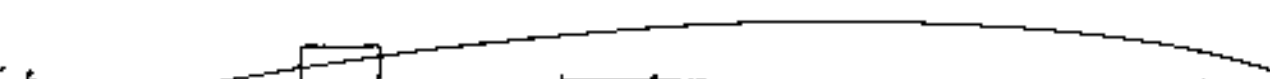
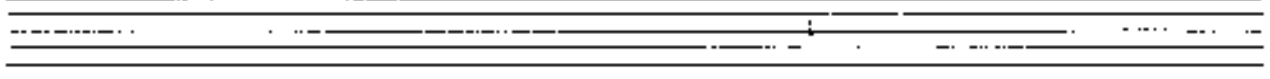
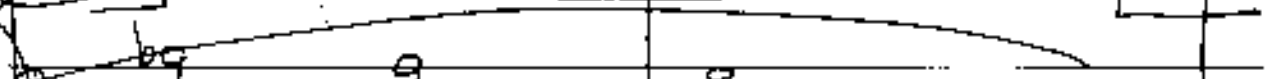
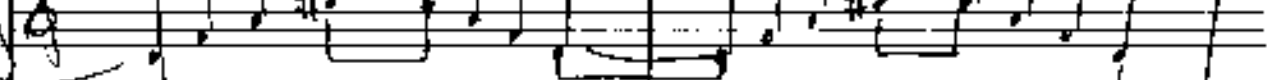
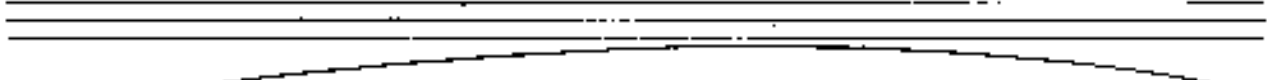
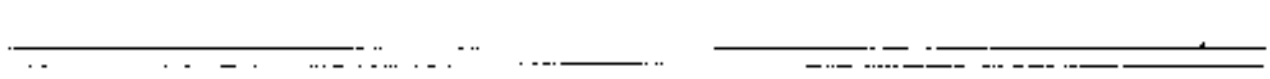
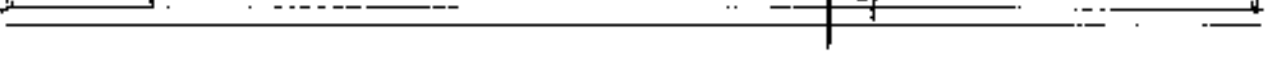
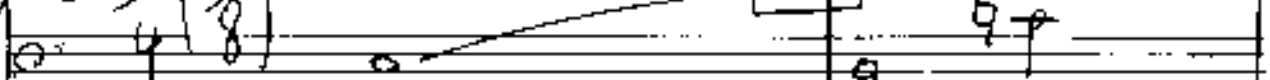
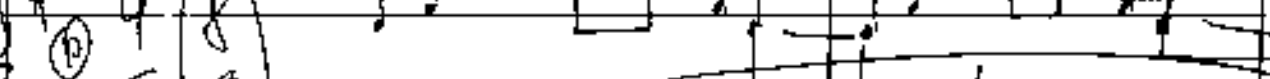
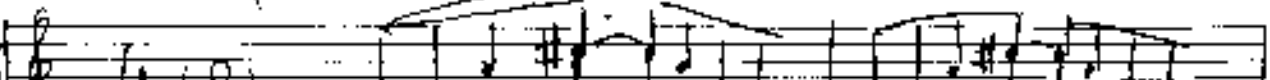
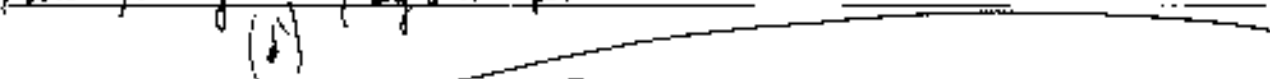
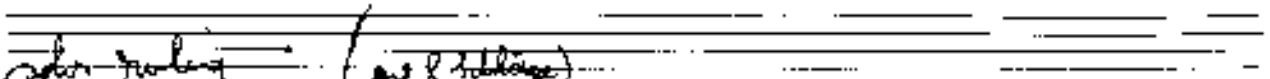
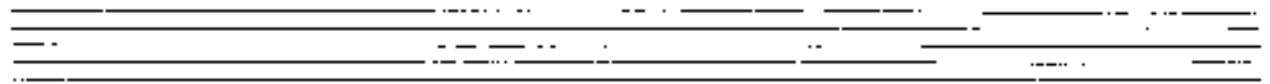
Handwritten musical notation for the third system. It consists of a treble clef, a key signature of one sharp (F#), and a 2/5 time signature. The melody is written on a single staff with a slur over two measures. The piano accompaniment is on a grand staff with a brace on the left and a slur under two measures.

Handwritten musical notation for the first system. It consists of a treble clef, a key signature of one sharp (F#), and a 2/4 time signature. The melody line features a series of notes with slurs, and the bass line contains notes and rests. A large bracket spans across the system.

Handwritten musical notation for the second system. It consists of a treble clef, a key signature of two flats (Bb, Eb), and a 2/4 time signature. The melody line features a series of notes with slurs, and the bass line contains notes and rests. A large bracket spans across the system.

Handwritten musical notation for the third system. It consists of a treble clef, a key signature of one flat (Bb), and a 2/4 time signature. The melody line features a series of notes with slurs, and the bass line contains notes and rests. A large bracket spans across the system.

(guit)



schon geübt (mit 8 Taktzeichen)

Handwritten musical notation for the first system. The treble staff contains a sequence of notes: G4, A4, B4, C5, B4, A4, G4, F4, E4, D4. The bass staff contains chords: B2-G2, G2-A2, B2, and B1-G1. A large slur encompasses the entire system.

Handwritten musical notation for the second system. The treble staff contains notes: G4, A4, B4, C5, B4, A4, G4, F4, E4, D4. The bass staff contains chords: G2, B2-G2, and G1. A large slur encompasses the entire system.

Handwritten musical notation for the third system. The treble staff contains notes: G4, A4, B4, C5, B4, A4, G4, F4, E4, D4. The bass staff contains chords: B2-G2, G2, and G1. A large slur encompasses the entire system.

Four sets of empty musical staves, each consisting of a treble and bass staff.

(11)

Handwritten musical notation for the first system. The treble clef staff contains two measures of music with a sharp sign in the first measure and a sharp sign in the second measure. The bass clef staff contains two measures with chords: G7, G7, and G7. A large slur covers both staves.

Handwritten musical notation for the second system. The treble clef staff contains two measures of music with a sharp sign in the first measure and a sharp sign in the second measure. The bass clef staff contains two measures with chords: G7, G7, and G7. A large slur covers both staves.

Handwritten musical notation for the third system. The treble clef staff contains two measures of music with a flat sign in the first measure and a flat sign in the second measure. The bass clef staff contains two measures with chords: G7, G7, and G7. A large slur covers both staves.

Handwritten musical notation for the fourth system. The treble clef staff contains two measures of music with a flat sign in the first measure and a flat sign in the second measure. The bass clef staff contains two measures with chords: G7, G7, and G7. A large slur covers both staves.

Handwritten musical notation for the first system. The treble staff contains a melodic line with a slur over the first two measures and a fermata over the last two. The bass staff provides accompaniment with notes and rests. A handwritten number '47' is present in the second measure of the bass staff.

Handwritten musical notation for the second system, continuing the piece with similar notation to the first system.

(poco rit)

Handwritten musical notation for the third system. The bass staff shows a change in the accompaniment pattern, with more active notes.

Handwritten musical notation for the fourth system. The tempo marking "lento" is written above the treble staff. The notation includes a large slur and fermata over the final measures, indicating a slow, sustained ending.

Andante

(♩)

Handwritten musical notation for the first system, featuring a treble clef staff with a whole note chord (Bb) and a circled 'p' dynamic marking, and a bass clef staff with a melodic line of eighth notes and a circled 'p' dynamic marking. The system is enclosed in a large hand-drawn oval.

Handwritten musical notation for the second system, featuring a treble clef staff with a melodic line of eighth notes and a circled 'p' dynamic marking, and a bass clef staff with a melodic line of eighth notes and a circled 'p' dynamic marking. The system is enclosed in a large hand-drawn oval.

Handwritten musical notation for the third system, featuring a treble clef staff with a melodic line of eighth notes and a circled 'p' dynamic marking, and a bass clef staff with a melodic line of eighth notes and a circled 'p' dynamic marking. The system is enclosed in a large hand-drawn oval.

Handwritten musical notation for the fourth system, featuring a treble clef staff with a melodic line of eighth notes and a circled 'p' dynamic marking, and a bass clef staff with a melodic line of eighth notes and a circled 'p' dynamic marking. The system is enclosed in a large hand-drawn oval.

(poco rit) (adagio string)

Handwritten musical notation for the first system. The treble clef staff contains a melodic line with notes G4, A4, B4, C5, and D5. The bass clef staff contains a chordal accompaniment with notes G3, B3, and D4. The system consists of three measures, each with a slur over the notes and a dynamic marking of *p*.

Handwritten musical notation for the second system. The treble clef staff continues the melodic line with notes D5, E5, F5, and G5. The bass clef staff continues the accompaniment with notes G3, B3, and D4. The system consists of three measures, each with a slur over the notes and a dynamic marking of *p*.

Handwritten musical notation for the third system. The treble clef staff continues the melodic line with notes A5, B5, C6, and D6. The bass clef staff continues the accompaniment with notes G3, B3, and D4. The system consists of four measures, each with a slur over the notes and a dynamic marking of *p*.

lento (ritardando) *poco rit.*

Handwritten musical notation for the fourth system. The treble clef staff contains a melodic line with notes D5, C5, B4, and A4. The bass clef staff contains a chordal accompaniment with notes G3, B3, and D4. The system consists of four measures, each with a slur over the notes and a dynamic marking of *p*.

p. ————— *p.* ————— *p.* ————— *p.*

(frei / Wandlung art.) (accel.)

pp

p

accel.

p

pp

acc.

garde(A) → acc.

sehr breit (frei) rubato

Handwritten musical score for piano, first system. It features a treble clef with a key signature of one sharp (F#) and a 6/4 time signature. The music consists of a single melodic line with a long, sweeping slur over several measures. The notes are mostly half notes and quarter notes, with some triplets indicated by '33' and '33'. The bottom two staves are empty.

Presto (rubato)

Handwritten musical score for piano, second system. It features a treble clef with a key signature of one sharp (F#) and a 6/4 time signature. The music is characterized by a very dense, rapid sequence of notes, creating a 'piano' effect. The notes are mostly eighth and sixteenth notes, with many beamed together. The bottom two staves are empty.

breit

Handwritten musical score for piano, third system. It features a treble clef with a key signature of one sharp (F#) and a 6/4 time signature. The music consists of a single melodic line with a long, sweeping slur over several measures. The notes are mostly half notes and quarter notes, with some triplets indicated by '33' and '33'. The bottom two staves are empty.

Presto

Handwritten musical score for the first system. It features a treble clef and a grand staff. The upper voice contains a complex melodic line with many beamed notes and slurs, while the lower voice is mostly empty.

Andante

Handwritten musical score for the second system. It features a treble clef and a grand staff. The tempo is marked 'Andante'. The music is more complex, with many notes and slurs in both the upper and lower voices. There are some handwritten annotations like '33' and '4'.

Presto

(mehr bewegt — bewegt)

Handwritten musical score for the third system. It features a treble clef and a grand staff. The tempo is marked 'Presto'. The music is very fast and complex, with many beamed notes and slurs. There are some handwritten annotations like '6 #' and '4 #'.

Handwritten musical notation for the first system. It consists of three measures. The first two measures show guitar chords with a '6' below them, indicating a sixth chord. The first chord has notes G4, A4, B4, C5, D5, E5. The second chord has notes G4, A4, B4, C5, D5, E5 with a '6' above the staff. The third measure shows a melodic line with notes G4, A4, B4, C5, D5, E5. The notation is written on a grand staff with treble and bass clefs.

Handwritten musical notation for the second system. It consists of two measures. The first measure shows a guitar chord with a '6' below it, with notes G4, A4, B4, C5, D5, E5. The second measure shows a guitar chord with a '6' below it, with notes G4, A4, B4, C5, D5, E5. The notation is written on a grand staff with treble and bass clefs.

Handwritten musical notation for the third system. It consists of two measures. The first measure shows a guitar chord with a '6' below it, with notes G4, A4, B4, C5, D5, E5. The second measure shows a guitar chord with a '6' below it, with notes G4, A4, B4, C5, D5, E5. The notation is written on a grand staff with treble and bass clefs.

Handwritten musical score for the first system. It consists of two staves: a treble clef staff and a bass clef staff. The treble staff contains a series of chords with sixteenth-note patterns, each marked with a '6' and a slur. The bass staff contains a simple bass line with quarter notes and rests. The key signature has two sharps (F# and C#).

Handwritten musical score for the second system, continuing the notation from the first system. It features the same two-staff structure with treble and bass clefs, complex chordal textures, and sixteenth-note patterns in the treble staff, and a simple bass line in the bass staff. The key signature remains two sharps.

Three sets of empty musical staves, each consisting of a treble clef staff and a bass clef staff, located at the bottom of the page.

Handwritten musical notation for the first system. It consists of a grand staff with three systems of staves. The top staff contains sixteenth-note chords, each with a flat (b) and a slur above it with the number '6'. The middle staff contains sixteenth-note chords with sharps (#) and flats (b). The bottom staff contains a bass line with quarter notes.

Handwritten musical notation for the second system, similar to the first system. It features a grand staff with three systems of staves. The top staff contains sixteenth-note chords with flats (b) and slurs with the number '6'. The middle staff contains sixteenth-note chords with sharps (#) and flats (b). The bottom staff contains a bass line with quarter notes.

(Fin)

Handwritten musical notation for the third system, ending with a double bar line. It features a grand staff with three systems of staves. The top staff contains chords with flats (b) and slurs. The middle staff contains chords with sharps (#) and flats (b). The bottom staff contains a bass line with quarter notes.

Tempo (Prestissimo)

Handwritten musical notation for the first system. It consists of two staves. The top staff is in treble clef and the bottom in bass clef. The music is in 6/8 time. The first measure has a 2-measure rest in the bass staff and a quarter note in the treble staff. The second measure has a quarter note in the treble staff and a quarter note in the bass staff. The third measure has a quarter note in the treble staff and a quarter note in the bass staff. The fourth measure has a quarter note in the treble staff and a quarter note in the bass staff. The fifth measure has a quarter note in the treble staff and a quarter note in the bass staff. The sixth measure has a quarter note in the treble staff and a quarter note in the bass staff. There are various markings above and below the notes, including accents (^) and the number '2'.

L.H. (legato)

R.H. (non stacc.)

Handwritten musical notation for the second system. It consists of two staves. The top staff is in treble clef and the bottom in bass clef. The music is in 6/8 time. The first measure has a quarter note in the treble staff and a quarter note in the bass staff. The second measure has a quarter note in the treble staff and a quarter note in the bass staff. The third measure has a quarter note in the treble staff and a quarter note in the bass staff. The fourth measure has a quarter note in the treble staff and a quarter note in the bass staff. There are various markings above and below the notes, including accents (^).

Handwritten musical notation for the third system. It consists of two staves. The top staff is in treble clef and the bottom in bass clef. The music is in 6/8 time. The first measure has a quarter note in the treble staff and a quarter note in the bass staff. The second measure has a quarter note in the treble staff and a quarter note in the bass staff. The third measure has a quarter note in the treble staff and a quarter note in the bass staff. The fourth measure has a quarter note in the treble staff and a quarter note in the bass staff. The fifth measure has a quarter note in the treble staff and a quarter note in the bass staff. The sixth measure has a quarter note in the treble staff and a quarter note in the bass staff. There are various markings above and below the notes, including accents (^).

Handwritten musical notation on a grand staff. The upper staff contains chords and notes, with a key signature of one sharp (F#) and a 7/4 time signature. The lower staff contains a melodic line with a long slur over the first four measures.

Handwritten musical notation on a grand staff, similar to the first system. It includes a key signature of one sharp and a 7/4 time signature. A decorative flourish is written on the right side of the staff.

Handwritten musical notation on a grand staff. The staves are mostly empty, with handwritten text in parentheses: "(letzten 19 Takte moderato)" and "(nach Steigerung)". The notation is enclosed in a double bar line.

(gewandelt)

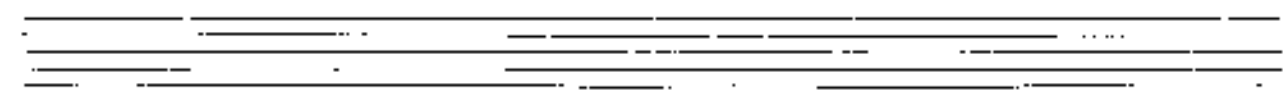
(frei (weso))

labe 2 Solitäre

Handwritten musical notation for the first system. It consists of two staves. The upper staff is in treble clef with a key signature of one sharp (F#) and a 4/4 time signature. It features a melodic line with a long slur across three measures. The lower staff is in bass clef with a 4/4 time signature, showing rhythmic patterns and fingerings. The word "scabato" is written below the bass line.

Handwritten musical notation for the second system. It continues the melodic and bass lines from the first system. The upper staff has a long slur, and the lower staff shows rhythmic patterns and fingerings.

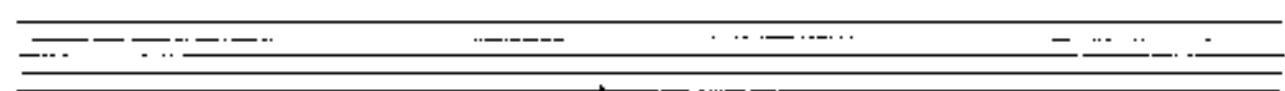
Handwritten musical notation for the third system. It continues the melodic and bass lines. The upper staff has a long slur, and the lower staff shows rhythmic patterns and fingerings.



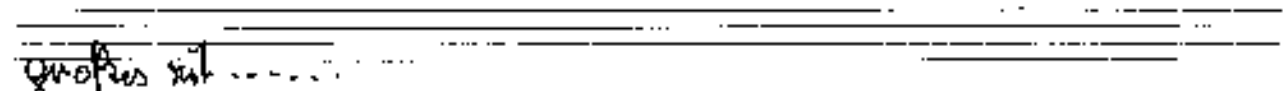
Handwritten musical notation on a grand staff. The treble clef staff contains a melodic line starting with a key signature of two sharps (F# and C#) and a common time signature. The bass clef staff contains a bass line with several chords and a long slur spanning across the first two measures. The notation is somewhat sketchy and appears to be a working draft.



Handwritten musical notation on a grand staff. The treble clef staff begins with a key signature change to one flat (Bb) and a common time signature. The bass clef staff continues with a bass line featuring chords and a long slur. The notation is consistent with the first system, showing a continuation of the piece.



Handwritten musical notation on a grand staff. The treble clef staff maintains the key signature of one flat (Bb) and common time. The bass clef staff shows a more active bass line with several chords and a long slur. The notation remains sketchy and appears to be a working draft.



Handwritten musical notation on a grand staff. The treble clef staff has a key signature of two sharps (F# and C#) and a common time signature. The text "graffus vil" is written above the first measure. The bass clef staff contains a complex bass line with many notes, some beamed together, and a long slur. There are some markings below the staff, possibly indicating fingerings or dynamics. The notation is very dense and appears to be a working draft.

Adagio

Handwritten musical notation for the first system, featuring a treble clef, a 4/4 time signature, and a piano (pp) dynamic marking. The music consists of a melody in the upper voice and a bass line in the lower voice, both spanning four measures. The melody begins with a quarter rest followed by a quarter note, then continues with eighth and quarter notes. The bass line consists of a series of half notes. A slur covers the entire system.

Handwritten musical notation for the second system, continuing the melody and bass line from the first system. It spans four measures with various note values and accidentals. A slur covers the entire system.

Handwritten musical notation for the third system, continuing the melody and bass line. It spans four measures with various note values and accidentals. A slur covers the entire system.

Handwritten musical notation for the fourth system, continuing the melody and bass line. It spans four measures with various note values and accidentals. A slur covers the entire system.

Handwritten musical notation for the first system, featuring a treble and bass clef with various notes and rests.

Tempo steigend bis Presto
 (frei) rubato

Handwritten musical notation for the second system, showing a treble and bass clef with notes and slurs.

accet.

Handwritten musical notation for the third system, including a treble and bass clef with notes and slurs.

Handwritten musical notation for the fourth system, featuring a treble and bass clef with notes and slurs.

gusle (A) acc. →

Handwritten musical notation for the first system. It consists of a treble clef and a bass clef. The first two measures are grouped under a large slur. The notes in the first measure are G4, A4, B4, and C5. The notes in the second measure are D5, E5, F5, and G5. There are sharp accidentals (#) on the notes D5, E5, and F5. A large number '6' is written below the first measure. An arrow points to the right above the second measure. The third and fourth measures are empty.

Handwritten musical notation for the second system. It consists of a treble clef and a bass clef. The first two measures are grouped under a large slur. The notes in the first measure are G4, A4, B4, and C5. The notes in the second measure are D5, E5, F5, and G5. There are sharp accidentals (#) on the notes D5, E5, and F5. A large number '6' is written below the first measure. An arrow points to the right above the second measure. The third and fourth measures are empty.

Handwritten musical notation for the third system. It consists of a treble clef and a bass clef. The first two measures are grouped under a large slur. The notes in the first measure are G4, A4, B4, and C5. The notes in the second measure are D5, E5, F5, and G5. There are sharp accidentals (#) on the notes D5, E5, and F5. A large number '6' is written below the first measure. An arrow points to the right above the second measure. The third and fourth measures are empty.

Handwritten musical notation for the fourth system. It consists of a treble clef and a bass clef. The first two measures are grouped under a large slur. The notes in the first measure are G4, A4, B4, and C5. The notes in the second measure are D5, E5, F5, and G5. There are sharp accidentals (#) on the notes D5, E5, and F5. A large number '6' is written below the first measure. An arrow points to the right above the second measure. The third and fourth measures are empty.

(1.) = Presto (siehe vorher - bewegt)

Handwritten musical notation for the first system, measures 1-2. The notation is written on a grand staff (treble and bass clefs). The right hand plays a series of eighth notes with a slur and a fermata. The left hand plays a series of eighth notes with a slur and a fermata. A circled '6' is written below the first measure of the right hand.

Handwritten musical notation for the second system, measures 3-5. The notation is written on a grand staff. The right hand plays a series of eighth notes with a slur and a fermata. The left hand plays a series of eighth notes with a slur and a fermata. A circled '6' is written below the first measure of the right hand in each of the three measures.

Handwritten musical notation for the third system, measures 6-8. The notation is written on a grand staff. The right hand plays a series of eighth notes with a slur and a fermata. The left hand plays a series of eighth notes with a slur and a fermata. A circled '6' is written below the first measure of the right hand in each of the three measures. A flat symbol (b) is written above the first measure of the right hand in the second measure.

Handwritten musical notation for the fourth system, measures 9-11. The notation is written on a grand staff. The right hand plays a series of eighth notes with a slur and a fermata. The left hand plays a series of eighth notes with a slur and a fermata. A circled '6' is written below the first measure of the right hand in each of the three measures. Flat symbols (b) are written above the first measure of the right hand in each of the three measures.

(frei -) Kandung)

Handwritten musical score for three staves. The top staff contains notes with various accidentals (sharps, flats, naturals) and dynamic markings. The middle staff features notes with a '6' marking. The bottom staff has a long, sustained note. Above the staves are several chord diagrams, each labeled with a letter (C, F, G, D, A, E) and a symbol (M, W), indicating specific chord voicings.

Prestissimo (Rit. (hart stark.))
 Tempo: (1.)

Handwritten musical score for two staves. The top staff shows chords with '2' markings, possibly indicating fingerings or a specific rhythmic pattern. The bottom staff contains notes with 'legato' and 'Cott. (lego)' markings. Above the staves are several accents (^) and a tempo marking 'Tempo: (1.)'.

Handwritten musical score for two staves. The top staff features chords with 'x' markings. The bottom staff contains notes with 'x' markings.

Handwritten musical score for two staves. The top staff features chords with 'x' markings. The bottom staff contains notes with 'x' markings.

leg. (Poco sostenuto) (rubato)
(wie ein Kind)

Andante sostenuto

sehr breit (auslassend) (aber nicht schlappend... .. appassionata

Handwritten musical score for the first system. It consists of a treble clef staff and a bass clef staff. The treble staff contains several measures of music with notes, some marked with a sharp sign (#). The bass staff contains notes, some marked with a flat sign (b). A large slur covers the first four measures of both staves. Below the bass staff, there are five whole notes on a single line, also under a slur.

Handwritten musical score for the second system. It consists of a treble clef staff and a bass clef staff. The treble staff contains several measures of music with notes, some marked with a sharp sign (#) and a flat sign (b). The bass staff contains notes, some marked with a flat sign (b). A large slur covers the first four measures of both staves. Below the bass staff, there are five whole notes on a single line, also under a slur.

Handwritten musical score for the third system. It consists of a treble clef staff and a bass clef staff. The treble staff contains several measures of music with notes, some marked with a sharp sign (#) and a flat sign (b). The bass staff contains notes, some marked with a flat sign (b). A large slur covers the first four measures of both staves. Below the bass staff, there are five whole notes on a single line, also under a slur.

gravesuit

1990
Hedwig
Kubel

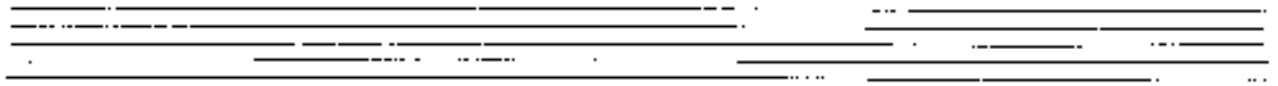
Improvisationen für

Orgel (über den Choral:

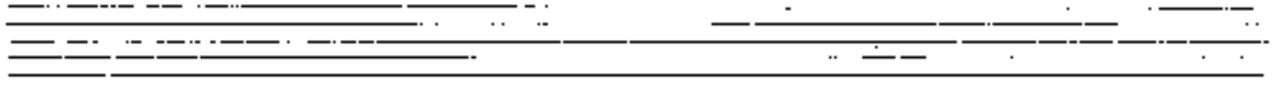
(Lass - erbaue dich mein) No. 2

1970

Adolf Schönbauer



nota penuh



Handwritten musical notation for the first system. The system consists of two staves. The upper staff is in treble clef and contains four measures of music with notes and rests. The lower staff is in bass clef and contains four measures of music with notes and rests. A large slur covers the entire system.

Handwritten musical notation for the second system. The system consists of two staves. The upper staff is in treble clef and contains four measures of music with notes and rests. The lower staff is in bass clef and contains four measures of music with notes and rests. A large slur covers the entire system.

Handwritten musical notation for the third system. The system consists of two staves. The upper staff is in treble clef and contains four measures of music with notes and rests. The lower staff is in bass clef and contains four measures of music with notes and rests. A large slur covers the entire system.

(poco rit)

gentle pizzicato

$\downarrow = 1$

Handwritten musical notation for the first system. It consists of two staves. The upper staff is in treble clef and contains a melodic line with a slur over it. The notes are G4, A4, B4, C5, B4, A4, G4, F4, E4, D4. The lower staff is in bass clef and contains a bass line with notes G2, F2, E2, D2. A circled 'p' dynamic marking is present in the first measure of the upper staff.

Handwritten musical notation for the second system. It consists of two staves. The upper staff continues the melodic line with notes G4, A4, B4, C5, B4, A4, G4, F4, E4, D4. The lower staff continues the bass line with notes G2, F2, E2, D2. The notation includes slurs and dynamic markings.

Handwritten musical notation for the third system. It consists of two staves. The upper staff continues the melodic line with notes G4, A4, B4, C5, B4, A4, G4, F4, E4, D4. The lower staff continues the bass line with notes G2, F2, E2, D2. The notation includes slurs and dynamic markings.

Handwritten musical notation on a grand staff. The treble clef staff contains a melodic line with eighth notes and a slur. The bass clef staff contains a bass line with quarter notes and rests. The system is divided into two measures by a vertical bar line.

Handwritten musical notation on a grand staff. The treble clef staff contains a melodic line with eighth notes and a slur. The bass clef staff contains a bass line with quarter notes and rests. The system is divided into two measures by a vertical bar line.

Handwritten musical notation on a grand staff. The treble clef staff contains a melodic line with eighth notes and a slur. The bass clef staff contains a bass line with quarter notes and rests. The system is divided into two measures by a vertical bar line.

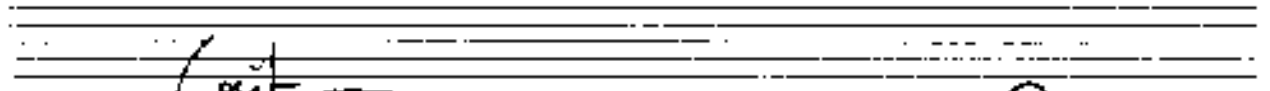
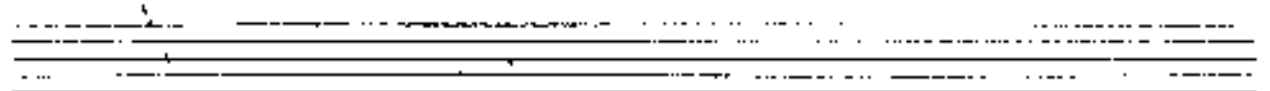
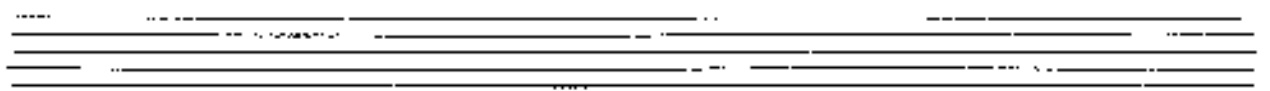
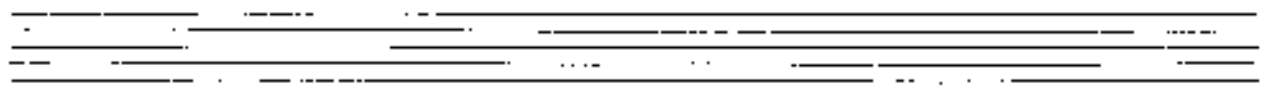
Handwritten musical notation on a grand staff. The treble clef staff contains a melodic line with eighth notes and a slur. The bass clef staff contains a bass line with quarter notes and rests. The system is divided into two measures by a vertical bar line.

Handwritten musical notation for the first system. The treble staff contains a melodic line with a slur over the first two measures. The bass staff contains a bass line. Below the bass staff is a 7-string guitar chord diagram: $7 \begin{bmatrix} 10 & 12 & 14 & 15 & 17 & 19 & 20 \end{bmatrix} 7$.

Handwritten musical notation for the second system. The treble staff contains a melodic line with a slur over the first two measures. The bass staff contains a bass line. Below the bass staff is a 7-string guitar chord diagram: $7 \begin{bmatrix} 10 & 12 & 14 & 15 & 17 & 19 & 20 \end{bmatrix} 7$.

Handwritten musical notation for the third system. The treble staff contains a melodic line with a slur over the first two measures. The bass staff contains a bass line.

Handwritten musical notation for the fourth system. The treble staff contains a melodic line with a slur over the first two measures. The bass staff contains a bass line.



poco rit

subito (ohne breit ausladend)

(A)

47 48

♯

♯

$\frac{3}{4}$

presto

49 50

♯

$\frac{3}{4}$

subito

(A)

51 52

♯

$\frac{3}{4}$

Presto

Handwritten musical notation for the first system. It features a treble clef and a series of chords with stems pointing upwards, all under a single slur. The chords are arranged in a sequence across the staff.

Andante

(2)

Handwritten musical notation for the second system. It features a treble clef, a key signature of one sharp (F#), and a 4/4 time signature. The notation includes a melody line with a slur and a fermata, and a bass line with chords. There are handwritten annotations '44' and '44' above the notes, and 'C' and 'D' above the bass line.

Presto

Handwritten musical notation for the third system. It features a treble clef and a series of chords with stems pointing upwards, all under a single slur. The chords are arranged in a sequence across the staff.

sehr breit (♩)

Handwritten musical score for the first system. It consists of a treble clef staff and a bass clef staff. The treble staff contains a melodic line with notes G4, A4, B4, and C5, with a slur over the last two notes. The bass staff contains a bass line with notes G3, F3, and E3. There are various accidentals (sharps and flats) and dynamic markings throughout the system.

immer besetzter — (accel) — großer Fließimpuls —

Handwritten musical score for the second system, marked "frei". It features a treble clef staff with a triplet of eighth notes (G4, A4, B4) and a bass clef staff with a triplet of eighth notes (G3, F3, E3). The system includes various accidentals and dynamic markings, indicating a section of free rhythm.

Handwritten musical score for the third system. The treble staff shows a melodic line with notes G4, A4, B4, and C5. The bass staff shows a bass line with notes G3, F3, and E3, along with some chordal structures. The system includes various accidentals and dynamic markings.

Handwritten musical score for the fourth system. The treble staff continues the melodic line with notes G4, A4, B4, and C5. The bass staff continues the bass line with notes G3, F3, and E3. The system includes various accidentals and dynamic markings.

Presto (2) *allegro*

Handwritten musical notation for the first system. The treble clef staff contains a melodic line with triplets and slurs. The bass clef staff contains a bass line with chords and a fermata. The key signature has one sharp (F#) and the time signature is 2/4.

Handwritten musical notation for the second system. The treble clef staff continues the melodic line with triplets and slurs. The bass clef staff contains a bass line with chords and a fermata. The key signature has two sharps (F#, C#) and the time signature is 2/4.

Handwritten musical notation for the third system. The treble clef staff continues the melodic line with triplets and slurs. The bass clef staff contains a bass line with chords and a fermata. The key signature has two sharps (F#, C#) and the time signature is 2/4.

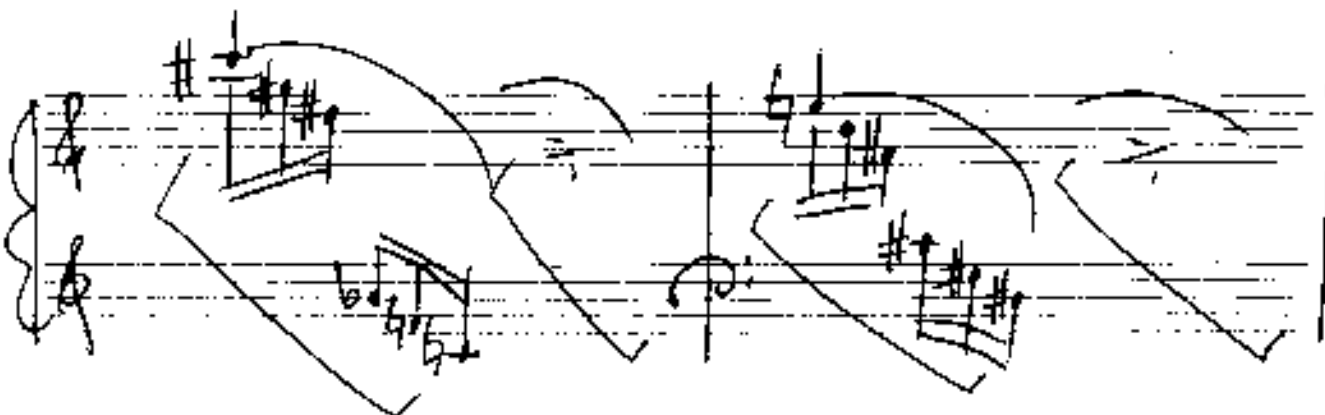
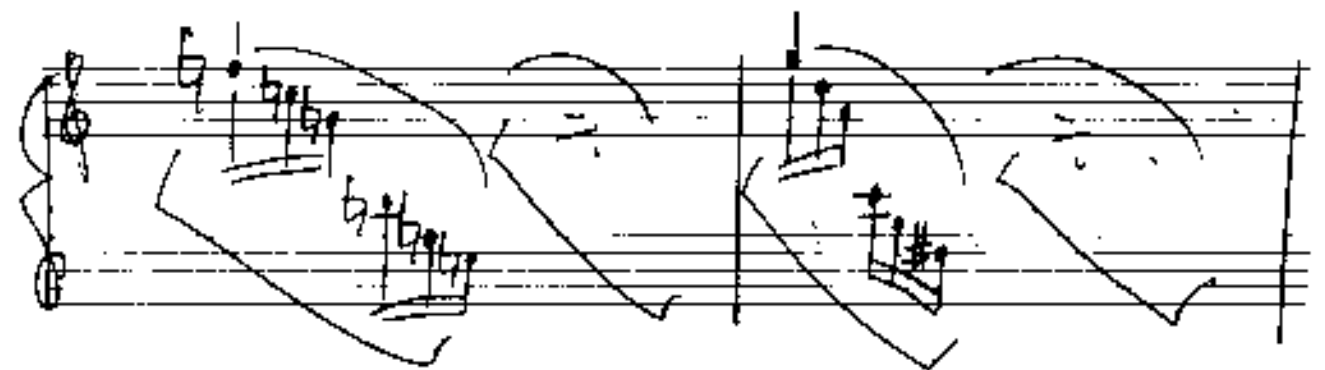
Handwritten musical notation for the fourth system. The treble clef staff continues the melodic line with triplets and slurs. The bass clef staff contains a bass line with chords and a fermata. The key signature has two sharps (F#, C#) and the time signature is 2/4.

Handwritten musical notation for the first system. The top staff is in treble clef and contains a 3-measure slur over a series of notes. The bottom staff is in bass clef and contains a 4-measure slur over a series of notes.

Handwritten musical notation for the second system. The top staff is in treble clef and contains a 3-measure slur over a series of notes. The bottom staff is in bass clef and contains a 4-measure slur over a series of notes.

Handwritten musical notation for the third system. The top staff is in treble clef and contains a 3-measure slur over a series of notes. The bottom staff is in bass clef and contains a 4-measure slur over a series of notes.

Handwritten musical notation for the fourth system. The top staff is in treble clef and contains a 3-measure slur over a series of notes. The bottom staff is in bass clef and contains a 4-measure slur over a series of notes.



Handwritten musical notation on a grand staff. The key signature has one flat (B-flat) and the time signature is common time (C). The notation consists of two staves per measure, with notes and rests connected by curved lines. The first measure contains a half note chord in the treble clef and a half note chord in the bass clef. The second measure contains a half note chord in the treble clef and a half note chord in the bass clef. The third measure contains a half note chord in the treble clef and a half note chord in the bass clef. The fourth measure contains a half note chord in the treble clef and a half note chord in the bass clef.

Handwritten musical notation on a grand staff. The key signature has one flat (B-flat) and the time signature is common time (C). The notation consists of two staves per measure, with notes and rests connected by curved lines. The first measure contains a half note chord in the treble clef and a half note chord in the bass clef. The second measure contains a half note chord in the treble clef and a half note chord in the bass clef. The third measure contains a half note chord in the treble clef and a half note chord in the bass clef. The fourth measure contains a half note chord in the treble clef and a half note chord in the bass clef.

Handwritten musical notation on a grand staff. The key signature has one flat (B-flat) and the time signature is 2/8. The notation consists of two staves per measure, with notes and rests connected by curved lines. The first measure contains a half note chord in the treble clef and a half note chord in the bass clef. The second measure contains a half note chord in the treble clef and a half note chord in the bass clef. The third measure contains a half note chord in the treble clef and a half note chord in the bass clef. The fourth measure contains a half note chord in the treble clef and a half note chord in the bass clef.

Handwritten musical notation on a grand staff. The key signature has two sharps (F# and C#) and the time signature is common time (C). The notation consists of two staves per measure, with notes and rests connected by curved lines. The first measure contains a half note chord in the treble clef and a half note chord in the bass clef. The second measure contains a half note chord in the treble clef and a half note chord in the bass clef. The third measure contains a half note chord in the treble clef and a half note chord in the bass clef.

meno (fres)

*4/4 (in Tempo sberpahan / accel)
rit.*

colore breite | 8/8

Handwritten musical score for the first system. It consists of a treble clef staff and a bass clef staff. The treble staff begins with a circled chord containing a flat (b) and a circled number (4). The bass staff begins with a circled number (4) and a sharp (#). Both staves contain several measures of music with notes, accidentals, and slurs. The system concludes with a double bar line.

Handwritten musical score for the second system. It consists of a treble clef staff and a bass clef staff. The treble staff begins with a circled chord containing a flat (b) and a circled number (4). The bass staff begins with a circled number (4) and a sharp (#). Both staves contain several measures of music with notes, accidentals, and slurs. The system concludes with a double bar line.

perpet + diuini

antato poci (1)

Handwritten musical score for the third system. It consists of a treble clef staff and a bass clef staff. The treble staff begins with a circled chord containing a flat (b) and a circled number (4). The bass staff begins with a circled number (4) and a sharp (#). Both staves contain several measures of music with notes, accidentals, and slurs. The system concludes with a double bar line.

dim f rit

lento *rit. molto*
f *rit*

tempo (lento)
mistaken

f *rit* *rit*

(poco rit)

Handwritten musical notation for the first system. The treble clef staff contains a melodic line with a long note in the first measure, followed by two measures of shorter notes. The bass clef staff contains a rhythmic accompaniment of eighth notes.

pp Largo (M)

Christus hatet ein stillen Tag
sein Herz empfundet Todesqual

Handwritten musical notation for the second system. The treble clef staff contains the vocal line with lyrics. The bass clef staff contains the piano accompaniment. The lyrics are: "Christus hatet ein stillen Tag sein Herz empfundet Todesqual".

Handwritten musical notation for the third system. The treble clef staff contains the vocal line with lyrics. The bass clef staff contains the piano accompaniment. The lyrics are: "Christus hatet ein stillen Tag sein Herz empfundet Todesqual".

Handwritten musical notation for the fourth system. The treble clef staff contains the vocal line with lyrics. The bass clef staff contains the piano accompaniment. The lyrics are: "Christus hatet ein stillen Tag sein Herz empfundet Todesqual".

Handwritten musical notation for the first system. The treble staff contains notes with a sharp sign and a circled '47'. The bass staff shows a series of chords with stems pointing down.

Handwritten musical notation for the second system. The treble staff includes a circled 'p' and notes with a flat sign. The bass staff continues with chords and stems pointing down.

Handwritten musical notation for the third system. The treble staff shows notes with a flat sign. The bass staff contains chords with stems pointing down.

Handwritten musical notation for the fourth system. The treble staff includes a circled '47' and notes with a sharp sign. The bass staff shows chords with stems pointing down.

Handwritten musical notation for the first system. The treble clef staff contains a melody with a key signature of one sharp (F#) and a 4/4 time signature. The melody is written on a single staff with a slur over the first two measures and a fermata over the last two. The bass line consists of three measures of chords, each with a slur and an upward-pointing arrow.

Handwritten musical notation for the second system. The treble clef staff contains a melody with a key signature of one flat (Bb) and a 4/4 time signature. The melody is written on a single staff with a slur over the first two measures and a fermata over the last two. The bass line consists of four measures of chords, each with a slur and an upward-pointing arrow.

Handwritten musical notation for the third system. The treble clef staff contains a melody with a key signature of one sharp (F#) and a 4/4 time signature. The melody is written on a single staff with a slur over the first two measures and a fermata over the last two. The bass line consists of four measures of chords, each with a slur and an upward-pointing arrow.

Handwritten musical score for the first system. The system consists of four measures. The top staff (treble clef) contains a melodic line with notes B, D, B, D, B, D, B, D, and a final B. The middle staff (piano accompaniment) features chords and eighth notes. The bottom staff (bass clef) contains a bass line with notes G, F, E, D.

Handwritten musical score for the second system. The system consists of four measures. The top staff (treble clef) contains a melodic line with notes B, D, B, D, B, D, B, D, and a final B. The middle staff (piano accompaniment) features chords and eighth notes. The bottom staff (bass clef) contains a bass line with notes G, F, E, D.

Handwritten musical score for the third system. The system consists of four measures. The top staff (treble clef) contains a melodic line with notes B, D, B, D, B, D, B, D, and a final B. The middle staff (piano accompaniment) features chords and eighth notes. The bottom staff (bass clef) contains a bass line with notes G, F, E, D.

Handwritten musical score for the first system. The treble clef staff contains a melodic line with a slur over the first two measures and a fermata over the last two. The piano staff shows chords with fingering numbers (1-4) and a circled 'ff' dynamic marking. The bass clef staff has a simple bass line with a slur. Below the system is a blank staff with the handwritten word *drängend*.

Handwritten musical score for the second system. The treble clef staff has a melodic line with a slur. The piano staff shows chords with fingering numbers and a circled 'ff' dynamic marking. The bass clef staff has a simple bass line with a slur. Below the system is a blank staff with the handwritten word *zuerst*.

Handwritten musical score for the third system. The treble clef staff has a melodic line with a slur and a fermata. The piano staff shows chords with fingering numbers and a circled 'ff' dynamic marking. The bass clef staff has a simple bass line with a slur. Below the system is a blank staff with the handwritten word *gut*.

apparizione (Kandengyong / Frei) kulata.

(1)

(esultate Figure)

Handwritten musical notation for the first system, featuring a treble and bass clef, a key signature of one sharp (F#), and a 4/4 time signature. The notation includes notes with stems and beams, and a large scribbled-out section on the right side of the staff.

Handwritten musical notation for the second system, continuing the piece with treble and bass clefs, a key signature of one sharp, and a 4/4 time signature. It includes notes with stems and beams, and a large scribbled-out section on the right side of the staff.

Handwritten musical notation for the third system, continuing the piece with treble and bass clefs, a key signature of one sharp, and a 4/4 time signature. It includes notes with stems and beams.

Handwritten musical score for the first system. It consists of a treble clef staff and a bass clef staff. The key signature has one flat (B-flat), and the time signature is 4/4. The first measure of the treble staff contains a large scribble. The second measure has a circled note in the bass staff. The third and fourth measures feature a circled chord in the treble staff.

Handwritten musical score for the second system. It consists of a treble clef staff and a bass clef staff. The key signature has one flat (B-flat), and the time signature is 4/4. The first measure of the treble staff contains a large scribble. The second measure has a circled note in the bass staff. The third and fourth measures feature a circled chord in the treble staff.

Handwritten musical score for the third system. It consists of a treble clef staff and a bass clef staff. The key signature has one flat (B-flat), and the time signature is 4/4. The first measure of the treble staff contains a large scribble. The second measure has a circled note in the bass staff. The third and fourth measures feature a circled chord in the treble staff.

(großes out)

Handwritten musical notation on three staves. The top staff has a treble clef and contains a series of notes with a large scribble over them. The middle staff has a bass clef and contains notes with a circled chord symbol. The bottom staff has a bass clef and contains notes with a large scribble over them.

Handwritten musical notation on three staves. The top staff has a treble clef and contains notes with a slur. The middle staff has a bass clef and contains notes with a slur. The bottom staff has a bass clef and contains notes with a slur.

Handwritten musical notation on a grand staff. The top staff has a treble clef and contains a whole note chord with a sharp sign. The middle staff has a treble clef and contains a melodic line with eighth notes and a sharp sign. The bottom staff has a bass clef and contains a whole note chord with a sharp sign.

Handwritten musical notation on a grand staff. The top staff has a treble clef and contains a whole note chord with a sharp sign. The middle staff has a treble clef and contains a melodic line with eighth notes and a sharp sign. The bottom staff has a bass clef and contains a whole note chord with a sharp sign. The word "lunga" is written in the middle staff.

1970
[Signature]
[Signature]