

2 Improvisationen für  
Orgel 1970

Adolf Scherling

Notenheft

Improvisationen für  
Orgel (über den Choral:

(Herr - erbarme dich unser) No. 1

1870

Adolf Scherbaum

*Maestoso (appassionato)*

Handwritten musical score for the first system. It features a treble clef with a 4/4 time signature and a key signature of two sharps (F# and C#). The right hand contains chords and melodic lines, while the left hand has a simple bass line with a circled double sharp symbol.

Handwritten musical score for the second system, continuing the piece with various chord changes and melodic developments in both hands.

*(drängend) accel.*

Handwritten musical score for the third system, marked "drängend" and "accel.". It shows a treble clef with a 2/2 time signature and a key signature of one flat (Bb). The right hand has a melodic line with a slur, and the left hand has a simple bass line.

Handwritten musical notation for the first system. The treble clef staff contains a melody in G major (one sharp) with a 2/4 time signature. The melody is slurred over two measures. The bass staff contains a few notes and rests. A large bracket spans the bottom of the system.

Handwritten musical notation for the second system. The treble clef staff contains a melody in B-flat major (two flats) with a 2/4 time signature. The melody is slurred over two measures. The bass staff contains a few notes and rests. A large bracket spans the bottom of the system.

*drängend* —

Handwritten musical notation for the third system. The treble clef staff contains a melody in G major (one sharp) with a 2/4 time signature. The melody is slurred over two measures. The bass staff contains a few notes and rests. A large bracket spans the bottom of the system.



(grit)

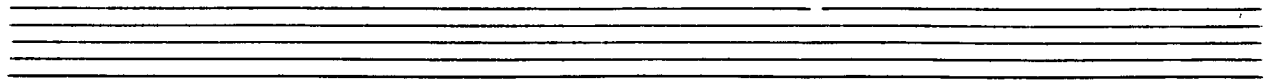
Handwritten musical notation for the first system. It consists of a treble clef staff and a bass clef staff. The treble staff contains a series of notes with sharp accidentals, grouped by a slur. The bass staff contains notes with sharp and natural accidentals, also grouped by a slur. There are additional markings above the treble staff, including a bracket and some symbols.

bweit

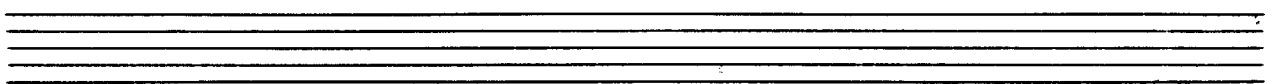
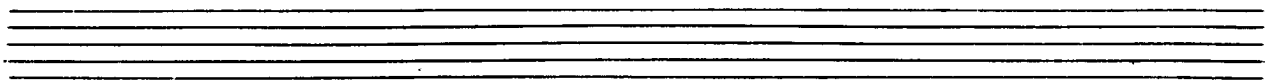
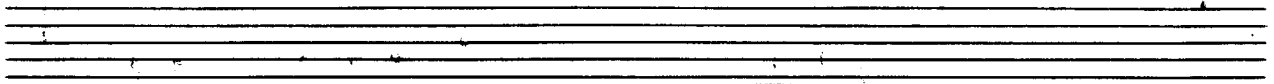
Handwritten musical notation for the second system. It features a treble clef staff and a bass clef staff. The treble staff has notes with slurs and a '33' marking. The bass staff has notes with slurs and fingerings '6' and '4'. There are also some vertical lines and other markings between the staves.

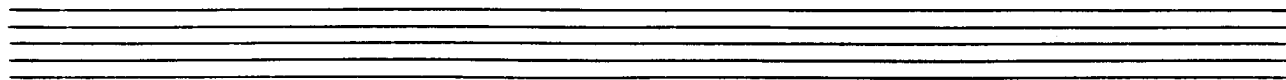
(gr. rit)

Handwritten musical notation for the third system. It includes a treble clef staff and a bass clef staff. The treble staff has notes with slurs and a 'rit' marking. The bass staff has notes with slurs and fingerings '9' and '9'. There are also some vertical lines and other markings between the staves.

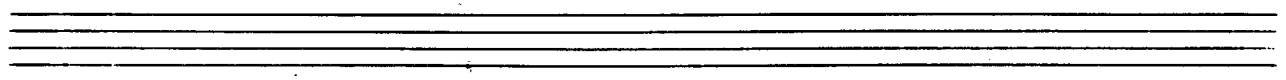


sehr ruhig (auf 2 Taktlänge)

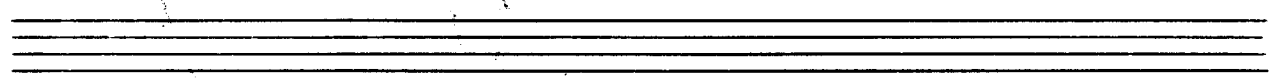




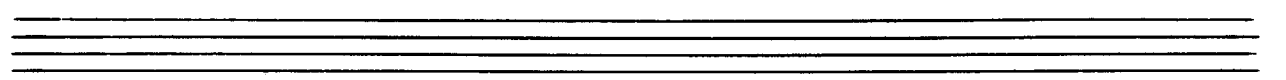
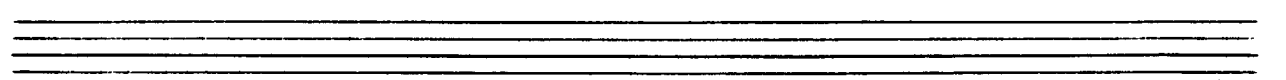
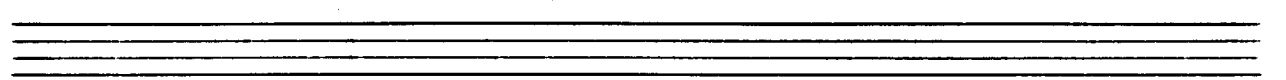
Handwritten musical notation for the first system. The treble clef staff contains a melodic line with notes G4, A4, B4, C5, B4, A4, G4, F4, E4, D4, C4. The bass clef staff contains chords: G2-B2, G2-A2, G2, and G2. A large slur covers the entire system.



Handwritten musical notation for the second system. The treble clef staff contains a melodic line with notes B3, C4, D4, E4, F4, G4, A4, B4, C5, B4, A4, G4, F4, E4, D4, C4. The bass clef staff contains chords: G2, G2-B2, and G2. A large slur covers the entire system.



Handwritten musical notation for the third system. The treble clef staff contains a melodic line with notes G4, A4, B4, C5, B4, A4, G4, F4, E4, D4, C4. The bass clef staff contains chords: G2-B2, G2, and G2. A large slur covers the entire system.





(1)

Handwritten musical notation for the first system. The treble clef staff contains a melodic line with a slur over two measures. The bass clef staff contains a simple accompaniment with notes marked 'd' and 'g'.

Handwritten musical notation for the second system. The treble clef staff continues the melodic line. The bass clef staff features more complex accompaniment with notes marked with sharps and 'd'.

(poco rit)

Handwritten musical notation for the third system. The treble clef staff shows a continuation of the melodic theme. The bass clef staff has accompaniment with notes marked with sharps and 'd'.

Handwritten musical notation for the fourth system. The word "Lento" is written above the treble clef staff. The treble clef staff has a melodic line with a slur. The bass clef staff has a more complex accompaniment with notes marked with sharps and 'd'.



(poco rit)

(schon ruhig)

*lento* (mistakenly) *poco rit*

*p.* ——— *p.* ——— *p.* ——— *p.*

(frei / Variationen) (aue).

Handwritten musical score for the first system. It consists of two staves. The top staff has a treble clef and contains several notes with slurs and accents. The bottom staff has a bass clef and contains notes with slurs and accents. A circled 'pp' (pianissimo) marking is present in the bottom staff. The word 'rubbato' is written above the bottom staff. Above the system, the text '(frei / Variationen)' and '(aue)' is written in parentheses.

aue.

Handwritten musical score for the second system. It consists of two staves. The top staff has a treble clef and contains notes with slurs and accents. The bottom staff has a bass clef and contains notes with slurs and accents. A circled 'p' (piano) marking is present in the bottom staff. The word 'aue.' is written above the system.

Handwritten musical score for the third system. It consists of two staves. The top staff has a treble clef and contains notes with slurs and accents. The bottom staff has a bass clef and contains notes with slurs and accents. A circled 'p' (piano) marking is present in the bottom staff.

accl. - - - -

garde(♩) → accel.

sehr breit (frei) rubato

Handwritten musical score for the first system, featuring a grand staff with treble and bass clefs. The music is marked "sehr breit (frei) rubato". It consists of a few measures with long, horizontal lines indicating sustained notes and some handwritten annotations like "33" and "#9".

Presto (rubato)

Handwritten musical score for the second system, featuring a grand staff. The music is marked "Presto (rubato)". The upper staff contains a dense, rapid sequence of notes, while the lower staves are mostly empty.

breit

Handwritten musical score for the third system, featuring a grand staff. The music is marked "breit". It includes a few measures with long horizontal lines and some handwritten annotations like "33" and "#9".



Presto

brist

Presto (sehr bewegt — bewegt)

Handwritten musical score for the first system. It consists of three staves. The top staff is in treble clef. The middle staff is in bass clef with a '6' fingering. The bottom staff is in bass clef with a 'b' fingering. The notation includes chords and melodic lines with slurs and ties.

Handwritten musical score for the second system. It consists of three staves. The top staff is in treble clef. The middle staff is in bass clef with a '6' fingering. The bottom staff is in bass clef with a 'b' fingering. The notation includes chords and melodic lines with slurs and ties.

Handwritten musical score for the third system. It consists of three staves. The top staff is in treble clef. The middle staff is in bass clef with a '6' fingering. The bottom staff is in bass clef with a 'b' fingering. The notation includes chords and melodic lines with slurs and ties.



Handwritten musical notation for the first system. It consists of a treble clef staff and a bass clef staff. The treble staff contains three measures of music, each with a sixteenth-note chord (indicated by a '6' above a slur) and a flat sign (b) above the first note. The bass staff contains three measures of music, each with a quarter note. The notes in the bass staff are G2, F2, and E2.

Handwritten musical notation for the second system. It consists of a treble clef staff and a bass clef staff. The treble staff contains three measures of music, each with a sixteenth-note chord (indicated by a '6' above a slur) and a flat sign (b) above the first note. The bass staff contains three measures of music, each with a quarter note. The notes in the bass staff are G2, F2, and E2.

(frei)

Handwritten musical notation for the third system, labeled "(frei)". It consists of a treble clef staff and a bass clef staff. The treble staff contains four measures of music, each with a chord diagram (a circle with notes inside) and a wavy line below it. The bass staff contains four measures of music, each with a chord diagram and a wavy line below it. The notes in the bass staff are G2, F2, and E2.

Tempo / Prestissimo

Handwritten musical notation for the first system. It consists of two staves. The top staff is in treble clef and contains a series of notes with accents (^) and a '2' marking. The bottom staff is in bass clef and contains notes with '2' markings and accents. The notation is dense and includes various rhythmic values and articulations.

L.H. (legato)  
R.H. (hard stacc.)

Handwritten musical notation for the second system. It consists of two staves. The top staff is in treble clef and contains notes with accents (^) and a '2' marking. The bottom staff is in bass clef and contains notes with '2' markings and accents. The notation is dense and includes various rhythmic values and articulations.

Handwritten musical notation for the third system. It consists of two staves. The top staff is in treble clef and contains notes with accents (^) and a '2' marking. The bottom staff is in bass clef and contains notes with '2' markings and accents. The notation is dense and includes various rhythmic values and articulations.

Handwritten musical notation for the first system. The treble staff contains chords in the first two measures, followed by rests. The bass staff contains a melodic line with quarter notes and a final chord.

Handwritten musical notation for the second system, similar to the first. It includes a treble staff with chords and a bass staff with a melodic line. A decorative flourish is present on the right side of the system.

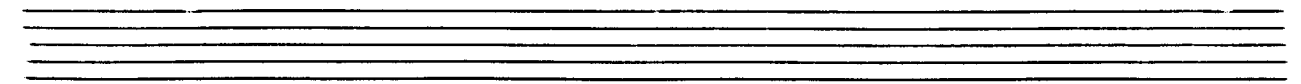
Handwritten musical notation for the third system, consisting of empty staves with handwritten text: (letzten 19 Takte modus) and (noch Harpung...).

(gewandigt)

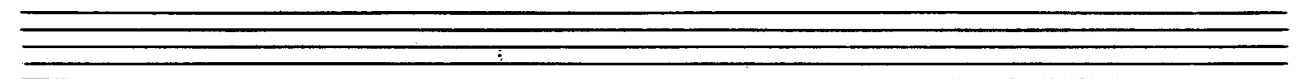
(frei (meno)

(aber 2 Solilänge)

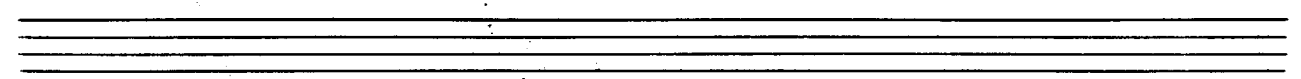
Cresc.



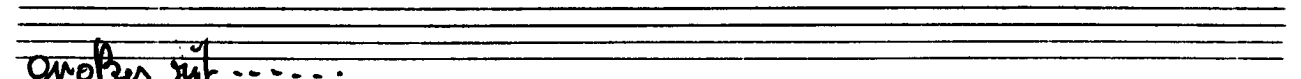
Handwritten musical notation for the first system. The right hand (treble clef) has a key signature of two sharps (F# and C#) and a common time signature. The left hand (bass clef) has a key signature of one flat (F) and a common time signature. The notation includes a long melodic line in the right hand and a bass line in the left hand with some rhythmic markings.



Handwritten musical notation for the second system. The right hand (treble clef) has a key signature of one flat (F) and a common time signature. The left hand (bass clef) has a key signature of one flat (F) and a common time signature. The notation includes a long melodic line in the right hand and a bass line in the left hand with some rhythmic markings.



Handwritten musical notation for the third system. The right hand (treble clef) has a key signature of one flat (F) and a common time signature. The left hand (bass clef) has a key signature of one flat (F) and a common time signature. The notation includes a long melodic line in the right hand and a bass line in the left hand with some rhythmic markings.



Handwritten musical notation for the fourth system. The right hand (treble clef) has a key signature of one sharp (F#) and a common time signature. The left hand (bass clef) has a key signature of one sharp (F#) and a common time signature. The notation includes a long melodic line in the right hand and a bass line in the left hand with some rhythmic markings. The word "großes rit" is written above the first measure of the right hand.



sehr ruhig

Handwritten musical notation for the first system. The treble clef part begins with a 4/4 time signature and a key signature of two flats (B-flat and E-flat). The first measure contains a quarter rest, followed by a quarter note B-flat, a quarter note D, and a quarter note B-flat. The second measure contains a quarter note D, a quarter note B-flat, and a quarter note D. The third measure contains a quarter note D, a quarter note B-flat, and a quarter note D. The fourth measure contains a quarter note D, a quarter note B-flat, and a quarter note D. The bass clef part consists of a single half note G in the first measure, which is sustained across the entire system.

Handwritten musical notation for the second system. The treble clef part continues with a quarter note B-flat, a quarter note D, a quarter note B-flat, a quarter note D, a quarter note B-flat, and a quarter note D. The bass clef part continues with a single half note G, sustained across the system.

Handwritten musical notation for the third system. The treble clef part continues with a quarter note B-flat, a quarter note D, a quarter note B-flat, a quarter note D, a quarter note B-flat, and a quarter note D. The bass clef part continues with a single half note G, sustained across the system.

Handwritten musical notation for the fourth system. The treble clef part continues with a quarter note B-flat, a quarter note D, a quarter note B-flat, a quarter note D, a quarter note B-flat, and a quarter note D. The bass clef part continues with a single half note G, sustained across the system.

Handwritten musical notation for the first system, featuring a treble and bass clef with various notes and accidentals.

Handwritten musical notation for the second system, including the word "rit" above the staff.

Handwritten musical notation for the third system, including the word "Largo (misterioso)" above the staff.

Handwritten musical notation for the fourth system, featuring complex rhythmic markings and accidentals.

Handwritten musical notation for the first system, featuring a treble and bass clef with various notes and rests.

(1) Tempo steigern — bis Presto  
 (frei) rubato

Handwritten musical notation for the second system, including a piano (*p*) dynamic marking and slurs.

*acc.*

Handwritten musical notation for the third system, showing a forte (*f*) dynamic marking and slurs.

Handwritten musical notation for the fourth system, continuing the piece with slurs and notes.

grande (A) accel →

(1.) = Presto (sehr erregt - bewegt)

The image displays a handwritten musical score for organ improvisation, organized into four systems. Each system consists of three staves: a top staff in G-clef (treble clef), a middle staff in C-clef (alto clef), and a bottom staff in F-clef (bass clef). The notation is dense and expressive, featuring numerous slurs, ties, and dynamic markings such as '6' and 'b'. The first system begins with a treble clef and a key signature of one sharp (F#). The second system continues with the same key signature. The third system introduces a key signature change to one flat (Bb) in the second measure. The fourth system maintains the one flat key signature. The overall style is highly gestural and characteristic of 20th-century organ improvisation.

(frei -) Kordenzug

**Prestissimo** (1.)  
Tempo (1.)

*legato*

Gott (legato)

leg. (Paci optoleu) (pato)  
 (wie die Kadenz)

Großes A

sehr breit (ausbreitend) (aber nicht schleppend) ----- appassionata



großes mit

Handwritten musical score for the first system, consisting of three staves. The top staff contains a melodic line with notes and accidentals, including a sharp sign. The middle and bottom staves contain chordal accompaniment with notes and accidentals, including flats and naturals.

Handwritten musical score for the second system, consisting of three staves. The top staff has notes and accidentals, with a dynamic marking of  $ff$ . The middle staff has notes and accidentals, with a dynamic marking of  $f$ . The bottom staff has notes and accidentals, with a dynamic marking of  $f$ . There are also some handwritten annotations like "(1)" and "(2)" between staves.

lunga

Handwritten musical score for the third system, consisting of three staves. The top staff has notes and accidentals, with a dynamic marking of  $ff$ . The middle staff has notes and accidentals, with a dynamic marking of  $f$ . The bottom staff has notes and accidentals, with a dynamic marking of  $f$ .

1970  
Adolp  
Sch

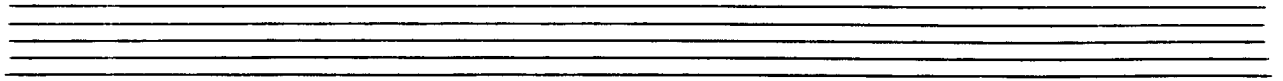
Improvisationen für

Orgel (über den Choral:

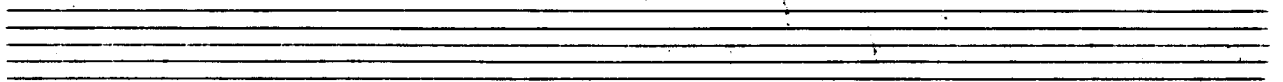
Herr - erbarme dich unser) No. 2

1970

Adolf Scherbaum



ndse pulig



Handwritten musical notation for the first system. It features a treble clef, a key signature of one flat (B-flat), and a 4/4 time signature. The music consists of four measures. The first measure contains a quarter note G4, a quarter note A4, and a quarter note B4. The second measure contains a quarter note G4, a quarter note F4, and a quarter note E4. The third measure contains a quarter note D4, a quarter note C4, and a quarter note B3. The fourth measure contains a quarter note A3, a quarter note G3, and a quarter note F3. The bass line consists of four whole notes: G2, F2, E2, and D2.

Handwritten musical notation for the second system. It features a treble clef, a key signature of one flat, and a 4/4 time signature. The music consists of four measures. The first measure contains a quarter note G4, a quarter note A4, and a quarter note B4. The second measure contains a quarter note G4, a quarter note F4, and a quarter note E4. The third measure contains a quarter note D4, a quarter note C4, and a quarter note B3. The fourth measure contains a quarter note A3, a quarter note G3, and a quarter note F3. The bass line consists of four whole notes: G2, F2, E2, and D2.

Handwritten musical notation for the third system. It features a treble clef, a key signature of one flat, and a 4/4 time signature. The music consists of four measures. The first measure contains a quarter note G4, a quarter note A4, and a quarter note B4. The second measure contains a quarter note G4, a quarter note F4, and a quarter note E4. The third measure contains a quarter note D4, a quarter note C4, and a quarter note B3. The fourth measure contains a quarter note A3, a quarter note G3, and a quarter note F3. The bass line consists of four whole notes: G2, F2, E2, and D2.

Handwritten musical notation for the first system. The system includes a treble clef, a key signature of one sharp (F#), and a 4/4 time signature. The melody consists of quarter and half notes with various accidentals. The bass line is a simple accompaniment of quarter notes.

Empty musical staves for the first system.

Handwritten musical notation for the second system. The system continues the piece with similar notation and a key signature of one sharp.

Empty musical staves for the second system.

Handwritten musical notation for the third system. The system shows further development of the melody and accompaniment.

Empty musical staves for the third system.

Handwritten musical score for the first system. The system consists of three staves. The top staff is in treble clef with a key signature of one sharp (F#) and a 9/8 time signature. It contains a melody line with quarter and eighth notes. The middle staff is in bass clef and contains a bass line with a steady eighth-note accompaniment. The bottom staff is also in bass clef and contains a bass line with a steady eighth-note accompaniment.

Handwritten musical score for the second system. The system consists of three staves. The top staff is in treble clef with a key signature of one sharp (F#) and a 9/8 time signature. It contains a melody line with quarter and eighth notes. The middle staff is in bass clef and contains a bass line with a steady eighth-note accompaniment. The bottom staff is also in bass clef and contains a bass line with a steady eighth-note accompaniment.

Handwritten musical score for the third system. The system consists of three staves. The top staff is in treble clef with a key signature of one sharp (F#) and a 9/8 time signature. It contains a melody line with quarter and eighth notes. The middle staff is in bass clef and contains a bass line with a steady eighth-note accompaniment. The bottom staff is also in bass clef and contains a bass line with a steady eighth-note accompaniment.

Handwritten musical score for the fourth system. The system consists of three staves. The top staff is in treble clef with a key signature of one sharp (F#) and a 9/8 time signature. It contains a melody line with quarter and eighth notes. The middle staff is in bass clef and contains a bass line with a steady eighth-note accompaniment. The bottom staff is also in bass clef and contains a bass line with a steady eighth-note accompaniment.

(poco rit)

gütig fließend

$\text{♩} = 1$

Handwritten musical notation for the first system. The treble staff contains a melodic line with a slur over the first two measures and a fermata over the third. The bass staff contains a bass line with a fermata over the second measure.

Handwritten musical notation for the second system. The treble staff contains a melodic line with a slur over the first two measures and a fermata over the third. The bass staff contains a bass line with a fermata over the second measure.

Handwritten musical notation for the third system. The treble staff contains a melodic line with a slur over the first two measures and a fermata over the third. The bass staff contains a bass line with a fermata over the second measure.

Handwritten musical notation for the fourth system. The treble staff contains a melodic line with a slur over the first two measures and a fermata over the third. The bass staff contains a bass line with a fermata over the second measure.



Handwritten musical notation for the first system. The treble staff contains a melodic line with a slur over the first two measures. The bass staff contains chordal accompaniment with a 7 chord in the first measure and a 9 chord in the second measure. The notes are in a key with one flat (B-flat).

Handwritten musical notation for the second system. The treble staff continues the melodic line with a slur. The bass staff continues the chordal accompaniment with 7 and 9 chords. The notes are in a key with one flat (B-flat).

Handwritten musical notation for the third system. The treble staff shows a change in key signature to one sharp (F#). The bass staff continues with a 9 chord. The notes are in a key with one sharp (F#).

Handwritten musical notation for the fourth system. The treble staff shows a change in key signature back to one flat (B-flat). The bass staff continues with a 9 chord. The notes are in a key with one flat (B-flat).

Handwritten musical notation for the first system, featuring a treble and bass staff with notes, accidentals, and a slur.

Handwritten musical notation for the second system, featuring a treble and bass staff with notes, accidentals, and a slur.

Handwritten musical notation for the third system, featuring a treble and bass staff with notes, accidentals, and a slur.

Handwritten musical notation for the fourth system, featuring a treble and bass staff with notes, accidentals, and a slur. Includes the word "Cresc." above the staff.

*Cresc.*

subito (oder breit ausladend)

Presto

oder breit

Presto

Handwritten musical score for Presto. The score is written on a grand staff with a treble clef and a key signature of one sharp (F#). The music features a melodic line in the upper voice and a complex, rhythmic accompaniment in the lower voice, consisting of dense chords and arpeggiated figures. The tempo is marked Presto.

Adagio

(1)

Handwritten musical score for Adagio. The score is written on a grand staff with a treble clef and a key signature of one sharp (F#). The music is marked Adagio and includes a first ending bracket labeled (1). The score features a melodic line in the upper voice and a complex, rhythmic accompaniment in the lower voice, consisting of dense chords and arpeggiated figures. The tempo is marked Adagio.

Presto

Handwritten musical score for Presto. The score is written on a grand staff with a treble clef and a key signature of one sharp (F#). The music features a melodic line in the upper voice and a complex, rhythmic accompaniment in the lower voice, consisting of dense chords and arpeggiated figures. The tempo is marked Presto.

sehr breit (♩)

immer bewegter — (accel) — große Plempung —

Handwritten musical notation for the first system. It consists of two staves (treble and bass clef) with notes, accidentals (sharps), and a large slur spanning across both staves. There are also some additional markings above the staves.

Handwritten musical notation for the second system. It consists of two staves (treble and bass clef) with notes, accidentals (flats and sharps), and a large slur spanning across both staves.

Handwritten musical notation for the third system. It consists of two staves (treble and bass clef) with notes, accidentals (flats), and a large slur spanning across both staves. There are also some additional markings above the staves.

Handwritten musical notation for the fourth system. It consists of two staves (treble and bass clef) with notes, accidentals (flats), and a large slur spanning across both staves. There are also some additional markings above the staves.

*Presto* (♩) (*cresc.*)

Handwritten musical notation for the first system. The treble clef staff contains a triplet of eighth notes in the first measure, followed by eighth notes in the second and third measures. The bass clef staff contains a quarter note in the first measure and a half note in the second measure, with a slur over the second measure.

Handwritten musical notation for the second system. The treble clef staff contains a triplet of eighth notes in the first measure, followed by eighth notes in the second and third measures. The bass clef staff contains a quarter note in the first measure and a half note in the second measure, with a slur over the second measure.

Handwritten musical notation for the third system. The treble clef staff contains a triplet of eighth notes in the first measure, followed by eighth notes in the second and third measures. The bass clef staff contains a quarter note in the first measure and a half note in the second measure, with a slur over the second measure.

Handwritten musical notation for the fourth system. The treble clef staff contains a triplet of eighth notes in the first measure, followed by eighth notes in the second and third measures. The bass clef staff contains a quarter note in the first measure and a half note in the second measure, with a slur over the second measure.



The image shows four systems of handwritten musical notation for organ improvisation. Each system consists of two staves. The notation is fluid and expressive, featuring large, sweeping curved lines that connect notes across measures, suggesting a continuous melodic or harmonic flow. The first system starts with a treble clef and a key signature of one sharp (F#). The second system continues with the same clef and key signature. The third system also uses a treble clef but changes the key signature to one flat (Bb). The fourth system uses a bass clef and maintains the one flat key signature. The notation includes various note values, accidentals (sharps, flats, naturals), and rests, all written in a clear but somewhat sketchy hand.

Handwritten musical notation for the first system. It consists of a treble and bass staff. The treble staff begins with a key signature of one flat (B-flat) and contains several notes, some grouped with a slur. The bass staff has notes and rests. Large, sweeping curved lines are drawn across both staves, connecting notes and rests across bar lines.

Handwritten musical notation for the second system. It consists of a treble and bass staff. The treble staff begins with a key signature of one flat (B-flat) and contains several notes, some grouped with a slur. The bass staff has notes and rests. Large, sweeping curved lines are drawn across both staves, connecting notes and rests across bar lines.

Handwritten musical notation for the third system. It consists of a treble and bass staff. The treble staff begins with a key signature of two flats (B-flat and E-flat) and a time signature of 2/8. It contains several notes, some grouped with a slur. The bass staff has notes and rests. Large, sweeping curved lines are drawn across both staves, connecting notes and rests across bar lines.

Handwritten musical notation for the fourth system. It consists of a treble and bass staff. The treble staff begins with a key signature of two sharps (F-sharp and C-sharp) and contains several notes, some grouped with a slur. The bass staff has notes and rests. Large, sweeping curved lines are drawn across both staves, connecting notes and rests across bar lines.

Handwritten musical notation for the first system, featuring a treble and bass clef with various notes and accidentals.

*meno (frei)*

Handwritten musical notation for the second system, including a treble clef, a 4/8 time signature, and a 3-measure rest.

*4/2 (ins Tempo übergehen (accel.) rit.)*

Handwritten musical notation for the third system, featuring a treble clef, a 4/2 time signature, and various notes.

Handwritten musical notation for the fourth system, including a treble clef, a 4/2 time signature, and a 3-measure rest.

schon breite | 8 )

Ad libitum

subito frei (1)

*(stin + rit)*

Handwritten musical score for the first system. It consists of two staves. The top staff is in treble clef and contains a whole note with a flat (Bb) and a fermata. The bottom staff is in bass clef and contains a whole note with a flat (Bb) and a fermata. There are additional notes and rests in both staves, including a half note with a flat (Bb) and a quarter note with a flat (Bb). The piece ends with a double bar line and a fermata.

*lento (st) solo ruhig*

*(frei)*

Handwritten musical score for the second system. It consists of two staves. The top staff is in treble clef and contains a melodic line with a fermata. The bottom staff is in bass clef and contains accompaniment. The piece is marked *lento* and *(frei)*.

*(tempo (lento))*

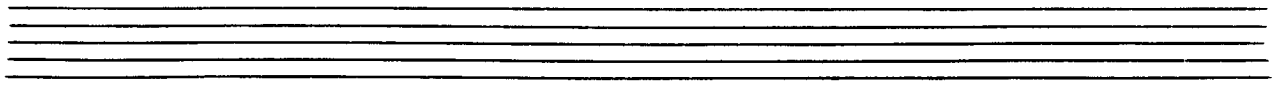
*(mitstärker)*

Handwritten musical score for the third system. It consists of two staves. The top staff is in treble clef and contains a melodic line with a fermata. The bottom staff is in bass clef and contains accompaniment. The piece is marked *(tempo (lento))* and *(mitstärker)*.

*frei*

*ruhig*

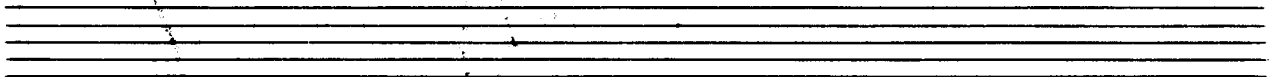
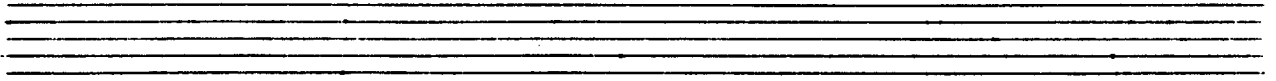
Handwritten musical score for the fourth system. It consists of two staves. The top staff is in treble clef and contains a melodic line with a fermata. The bottom staff is in bass clef and contains accompaniment. The piece is marked *frei* and *ruhig*.



(poco rit)

*pp* Largo (♩)

Christus kehret im stillen Tal —  
sein Herz empfindet Todesqual —

Handwritten musical notation for the first system. The treble staff contains notes with a sharp sign and the number 9, and a circled 47. The bass staff contains rhythmic patterns with stems and beams.

Handwritten musical notation for the second system. The treble staff begins with a circled 'p' and contains notes with a sharp sign and the number 9. The bass staff continues with rhythmic patterns.

Handwritten musical notation for the third system. The treble staff has notes with a sharp sign and the number 9. The bass staff has rhythmic patterns.

Handwritten musical notation for the fourth system. The treble staff has notes with a sharp sign and the number 9, and a circled 47. The bass staff has rhythmic patterns.





Handwritten musical score for the first system. The system consists of four measures. The treble clef is present, along with a key signature of one sharp (F#) and a 4/4 time signature. The music features complex chordal textures and melodic lines. Chord symbols above the staff include  $b d$ ,  $b d$ ,  $b d$ , and  $b d$ . A circled '7' is written in the first measure.

Handwritten musical score for the second system. The system consists of four measures. The treble clef is present, along with a key signature of one sharp (F#) and a 4/4 time signature. The music features complex chordal textures and melodic lines. Chord symbols above the staff include  $b d$ ,  $b d$ ,  $b d$ , and  $b d$ . A circled '7' is written in the first measure.

Handwritten musical score for the third system. The system consists of four measures. The treble clef is present, along with a key signature of one sharp (F#) and a 4/4 time signature. The music features complex chordal textures and melodic lines. Chord symbols above the staff include  $b d$ ,  $b d$ ,  $b d$ , and  $b d$ .

Handwritten musical score for the first system. It consists of three staves: treble, middle, and bass. The treble staff has a key signature of one sharp (F#) and a 4/4 time signature. It contains four measures of music with notes and rests. Above the first measure, there is a circled 'ff' and '(4)'. Above the second measure, there is a circled 'ff'. The middle staff contains rhythmic patterns of eighth and sixteenth notes. The bass staff contains a simple bass line with quarter notes.

*drömpend*

Handwritten musical score for the second system. It consists of three staves: treble, middle, and bass. The treble staff has a key signature of one sharp (F#) and a 4/4 time signature. It contains four measures of music with notes and rests. The middle staff contains rhythmic patterns of eighth and sixteenth notes. The bass staff contains a simple bass line with quarter notes.

*Zurück*

Handwritten musical score for the third system. It consists of three staves: treble, middle, and bass. The treble staff has a key signature of one sharp (F#) and a 4/4 time signature. It contains four measures of music with notes and rests. Above the second measure, there is a circled 'fff'. The middle staff contains rhythmic patterns of eighth and sixteenth notes. The bass staff contains a simple bass line with quarter notes.

*(gut)*

appassionata (Rodezpolitik / frei) rubato

(1)

resolvente Figuren

The first system of the handwritten musical score consists of three staves. The top staff is in treble clef, the middle in alto clef, and the bottom in bass clef. The key signature has two sharps (F# and C#). The time signature is 4/4. The notation includes various note values, accidentals, and dynamic markings. A large section on the right side of the system is heavily scribbled out with multiple overlapping lines, and the handwritten text "resolvente Figuren" is written above it.

The second system of the handwritten musical score consists of three staves. The top staff is in treble clef, the middle in alto clef, and the bottom in bass clef. The key signature has two sharps (F# and C#). The time signature is 4/4. The notation includes various note values, accidentals, and dynamic markings. A large section on the right side of the system is heavily scribbled out with multiple overlapping lines.

The third system of the handwritten musical score consists of three staves. The top staff is in treble clef, the middle in alto clef, and the bottom in bass clef. The key signature has two sharps (F# and C#). The time signature is 4/4. The notation includes various note values, accidentals, and dynamic markings. A large section on the right side of the system is heavily scribbled out with multiple overlapping lines.

Handwritten musical score for the first system, consisting of three staves. The top staff has a treble clef and contains several measures of music with some scribbled-out sections. The middle staff has a bass clef and contains similar notation. The bottom staff has a bass clef and contains a few notes with stems. The system is divided into four measures by vertical bar lines.

Handwritten musical score for the second system, consisting of three staves. The top staff has a treble clef and contains several measures of music with some scribbled-out sections. The middle staff has a bass clef and contains similar notation. The bottom staff has a bass clef and contains a few notes with stems. The system is divided into four measures by vertical bar lines.

Handwritten musical score for the third system, consisting of three staves. The top staff has a treble clef and contains several measures of music with some scribbled-out sections. The middle staff has a bass clef and contains similar notation. The bottom staff has a bass clef and contains a few notes with stems. The system is divided into four measures by vertical bar lines.

(Großes Gut)

The first system of the handwritten musical score consists of three staves. The top staff contains several notes, some with accidentals, and a large, dense scribble of lines. The middle staff has notes and rests, with a circled note in the second measure. The bottom staff features notes and rests, with some scribbles. The notation is somewhat messy and appears to be a working draft.

The second system of the handwritten musical score consists of three staves. The top staff has notes and rests, with a large slur over the first two measures. The middle staff has notes and rests, with a large slur over the first two measures. The bottom staff has notes and rests, with a large slur over the first two measures. The notation is somewhat messy and appears to be a working draft.

Handwritten musical score for the first system. It consists of three staves. The top staff has a treble clef and a key signature of one flat (B-flat). The middle staff has a treble clef and a key signature of one flat. The bottom staff has a bass clef and a key signature of one flat. The music includes various note values, rests, and dynamic markings such as *mf* and *f*. There are also some handwritten annotations like "33" and "6".

Handwritten musical score for the second system. It consists of three staves. The top staff has a treble clef and a key signature of one flat. The middle staff has a treble clef and a key signature of one flat. The bottom staff has a bass clef and a key signature of one flat. The music includes various note values, rests, and dynamic markings. A prominent marking "lunga" is written in the middle of the system. There is a large, decorative circular flourish on the right side of the system.

1970  
*Adolf Scherbaum*