

L.v. BEETHOVEN



W.A. MOZART



# NOTENHEFT

F. SCHUBERT



J. HAYDN



J. STRAUSS



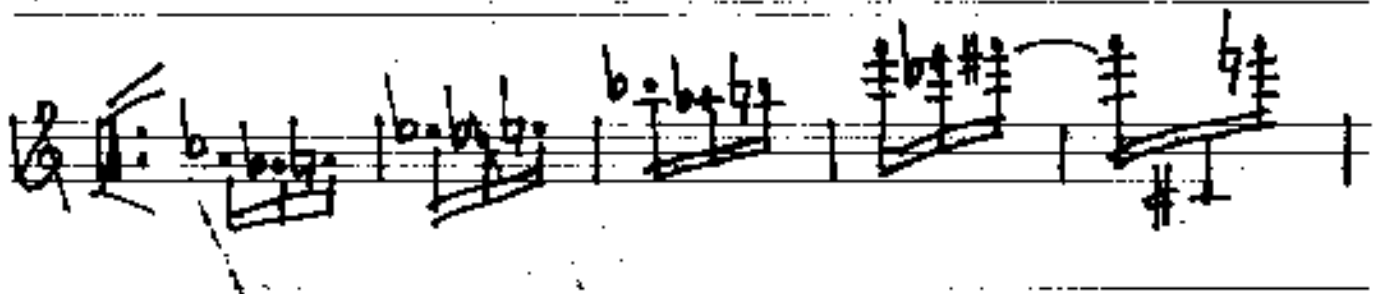
Nr. 306

7 Studien für Flöte

1.

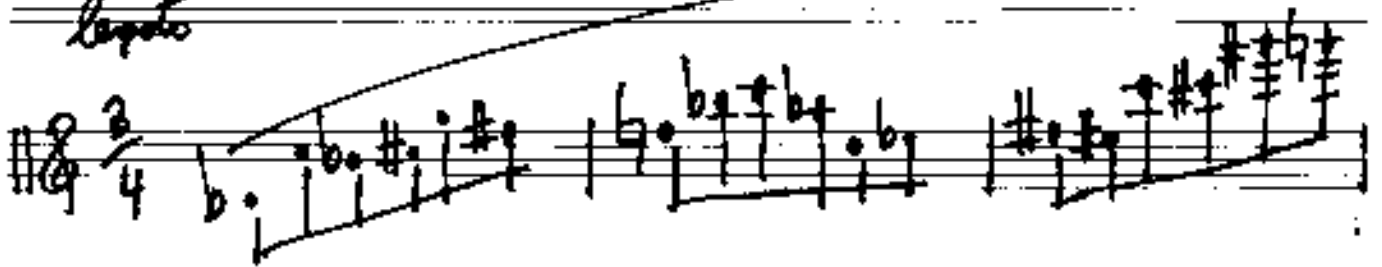


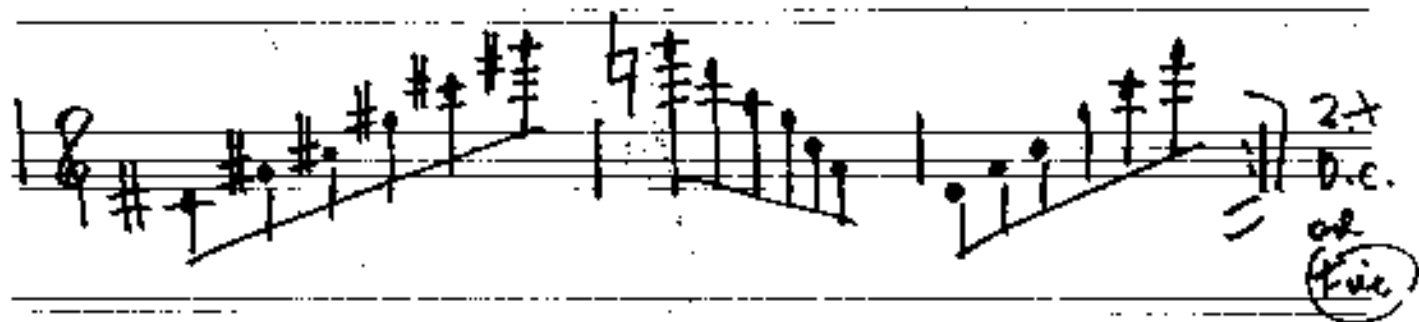
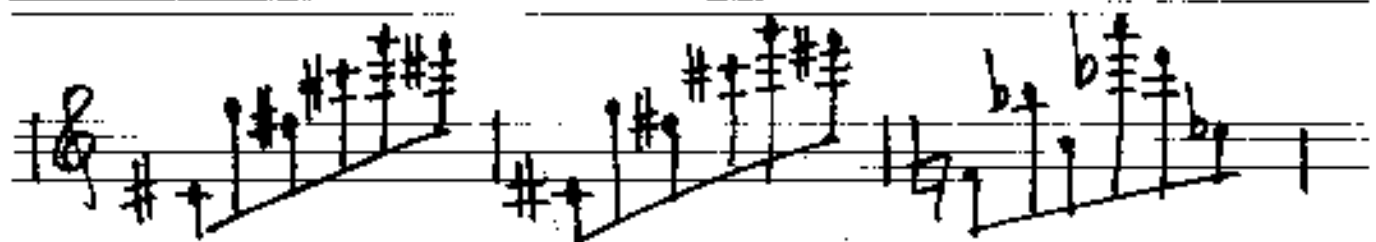
2



2.

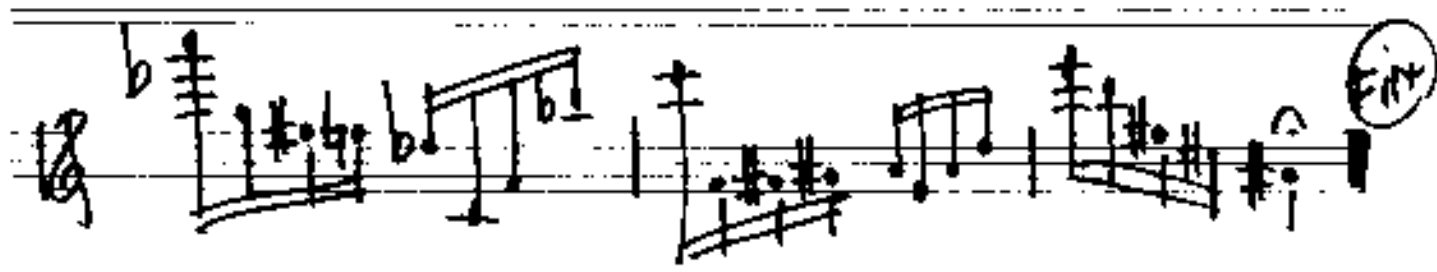
legato





3.







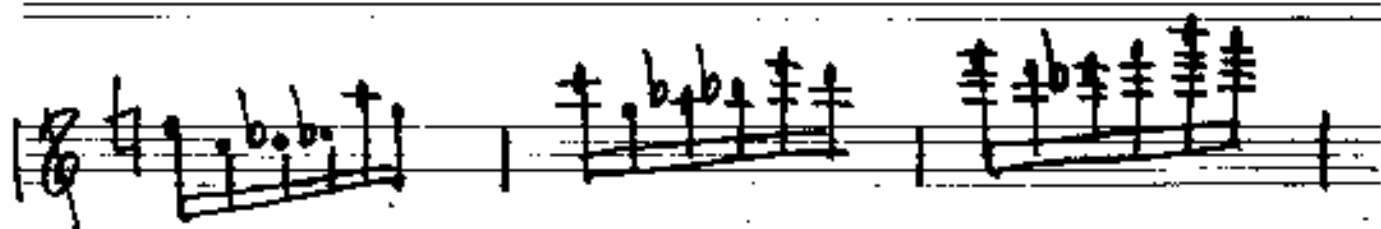
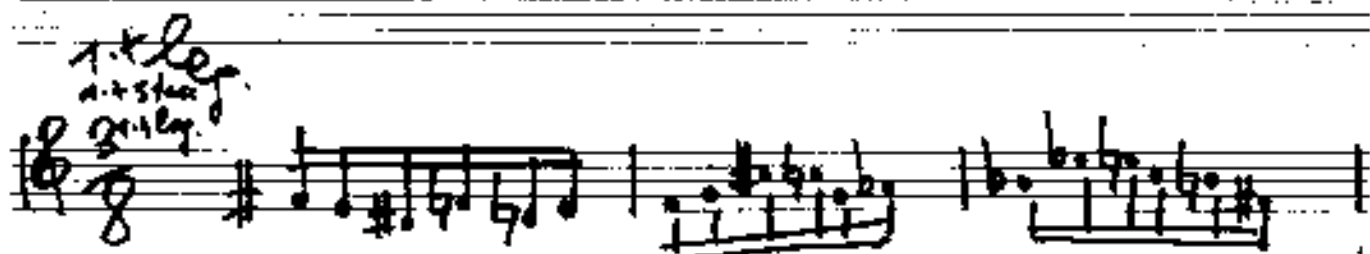
4.





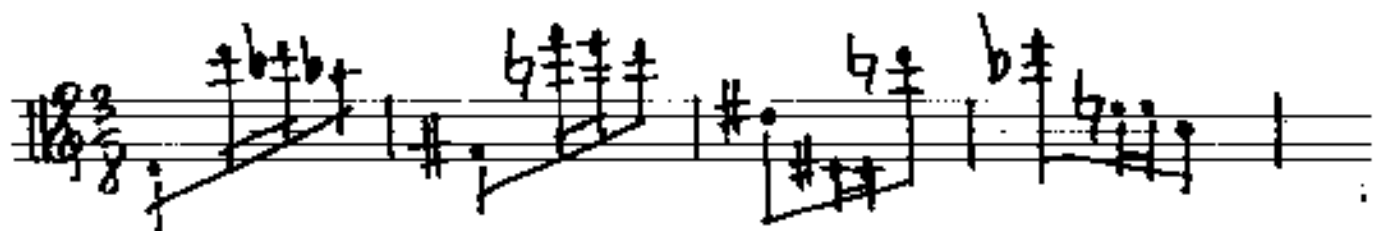
5.

*1. + leg.  
a. + stacc.  
2. + leg.*





6.



Handwritten musical notation on a single staff. It begins with a treble clef and a key signature of one flat (B-flat). The notation includes several chords and melodic lines with various accidentals (sharps, flats, and naturals).

Handwritten musical notation on a single staff. It continues the piece with more complex chordal structures and melodic lines, including a prominent B-flat and several sharp accidentals.

Handwritten musical notation on a single staff. It shows a change in rhythm and dynamics, with a double bar line and a fermata-like structure. The notation includes a B-flat and several sharp accidentals.

Handwritten musical notation on a single staff. It features a variety of chord voicings and melodic lines, including a B-flat and several sharp accidentals.

Handwritten musical notation on a single staff. It ends with a double bar line and dynamic markings, including "2x" and "D.C.". The notation includes a B-flat and several sharp accidentals.

Handwritten musical notation on a single staff. It concludes the piece with a final chord and a circled "Fin". The notation includes a B-flat and several sharp accidentals.

7.

Presto

