

L.v. BEETHOVEN



W.A. MOZART

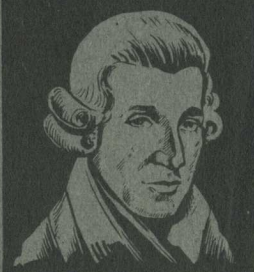


# NOTENHEFT

F. SCHUBERT



J. HAYDN



J. STRAUSS



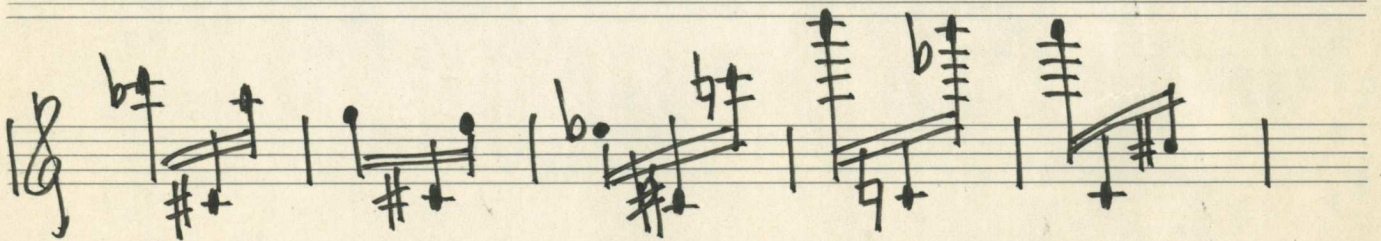
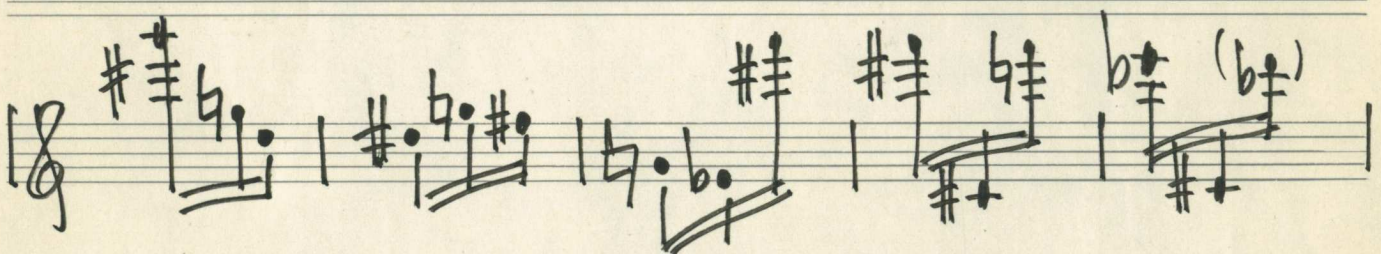
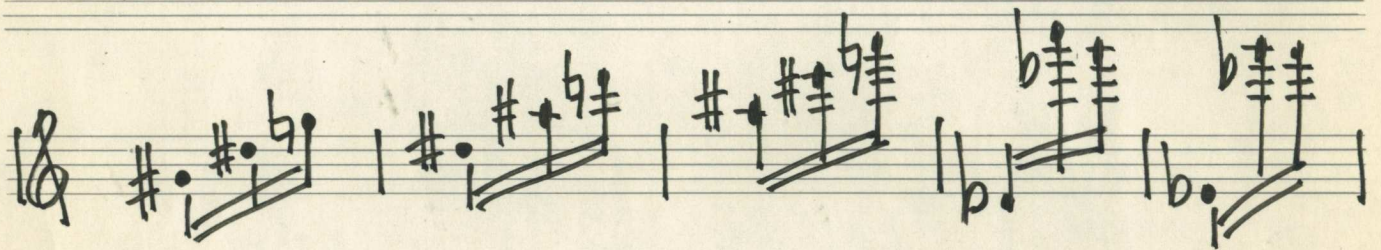
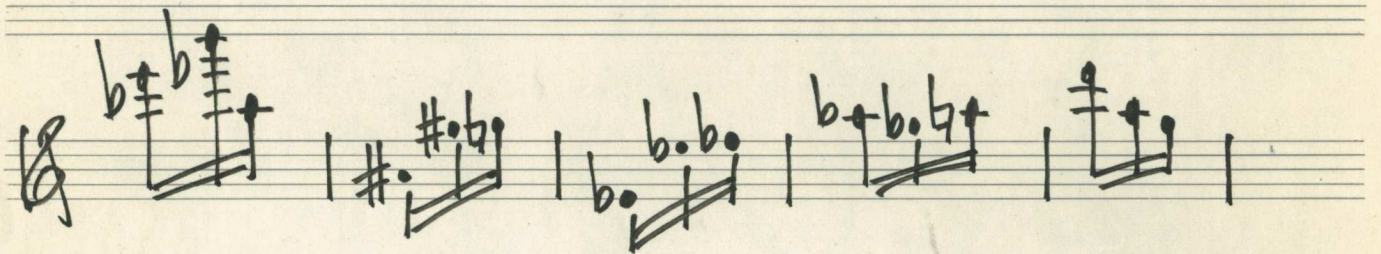
Nr. 408



7 Studien für Flöte

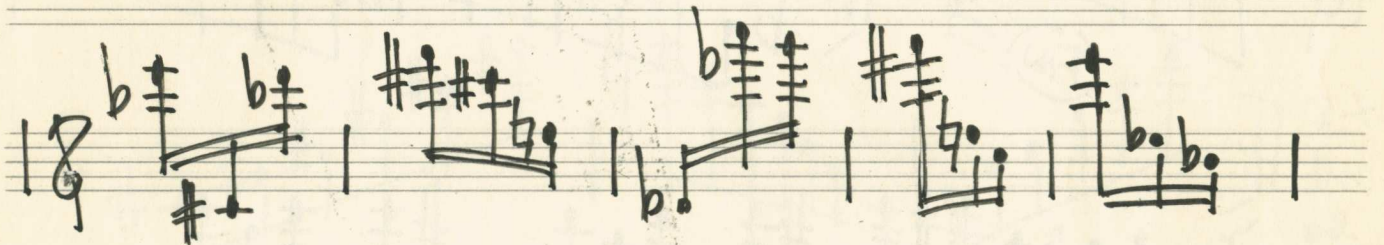
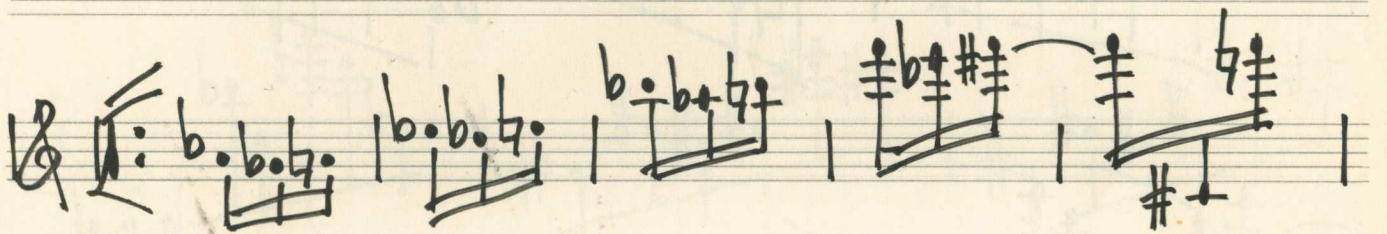
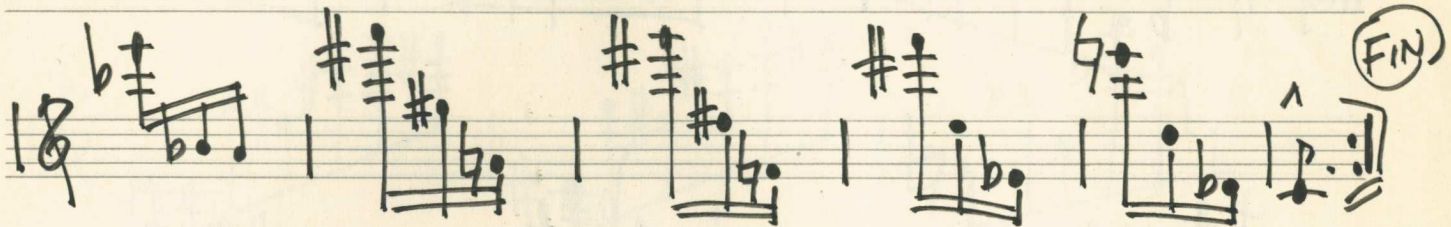


1.



2







2.

*legato*

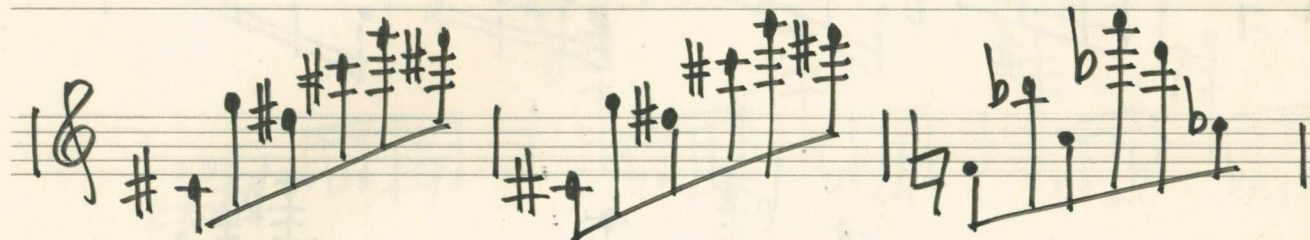
Handwritten musical notation on a single staff in treble clef, 3/4 time signature. It begins with a key signature of one flat (B-flat). The melody consists of quarter notes and eighth notes, with various accidentals (sharps, flats, naturals) throughout. A long slur covers the entire phrase.

Handwritten musical notation on a single staff in treble clef. The key signature changes to two sharps (D major). The melody continues with quarter and eighth notes, featuring a variety of accidentals.

Handwritten musical notation on a single staff in treble clef. It starts with a key signature of two sharps (D major) and includes a circled "Fin" marking. The notation includes a double bar line and repeat signs.

Handwritten musical notation on a single staff in treble clef. The key signature changes to one flat (B-flat). The melody consists of quarter notes and eighth notes.

Handwritten musical notation on a single staff in treble clef. The key signature changes to one flat (B-flat). The melody consists of quarter notes and eighth notes, ending with a slur.



2.  
D.C.  
or  
Tuc.



3.







4.



Handwritten musical notation on a single staff. It begins with a treble clef and a 3/4 time signature. The first measure contains a sharp sign and a complex chord structure. The second measure has a sharp sign and a note with a sharp. The third measure contains a sharp sign and a note with a sharp. The fourth measure has a flat sign and a note with a flat. The fifth measure has a flat sign and a note with a flat.

Handwritten musical notation on a single staff. It begins with a treble clef and a 3/4 time signature. The first measure contains a flat sign and a note with a flat. The second measure has a sharp sign and a note with a sharp. The third measure contains a flat sign and a note with a flat. The fourth measure has a sharp sign and a note with a sharp. The fifth measure has a flat sign and a note with a flat. The sixth measure has a flat sign and a note with a flat.

Handwritten musical notation on a single staff. It begins with a treble clef and a 3/4 time signature. The first measure contains a sharp sign and a note with a sharp. The second measure has a sharp sign and a note with a sharp. The third measure contains a sharp sign and a note with a sharp. The fourth measure has a sharp sign and a note with a sharp. The fifth measure has a flat sign and a note with a flat. The sixth measure has a flat sign and a note with a flat.

Handwritten musical notation on a single staff. It begins with a treble clef and a 3/4 time signature. The first measure contains a flat sign and a note with a flat. The second measure has a sharp sign and a note with a sharp. The third measure contains a flat sign and a note with a flat. The fourth measure has a sharp sign and a note with a sharp. The fifth measure has a flat sign and a note with a flat. The sixth measure has a flat sign and a note with a flat.

Handwritten musical notation on a single staff. It begins with a treble clef and a 3/4 time signature. The first measure contains a flat sign and a note with a flat. The second measure has a sharp sign and a note with a sharp. The third measure contains a flat sign and a note with a flat. The fourth measure has a sharp sign and a note with a sharp. The fifth measure has a flat sign and a note with a flat. The sixth measure has a flat sign and a note with a flat.

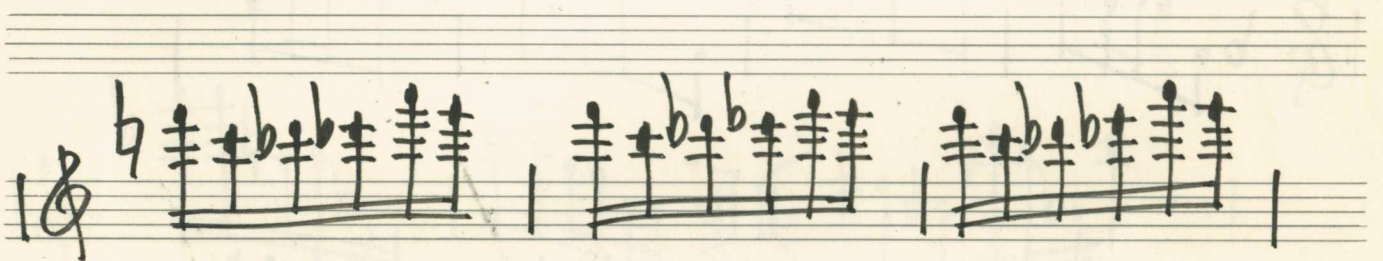
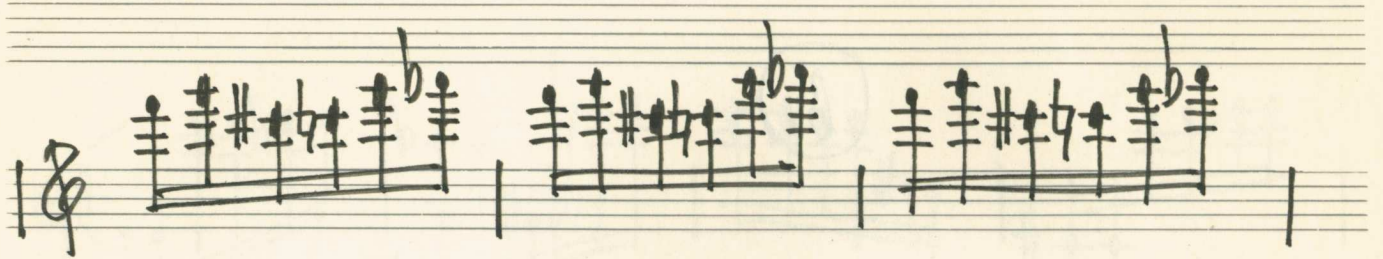
Handwritten musical notation on a single staff. It begins with a treble clef and a 3/4 time signature. The first measure contains a flat sign and a note with a flat. The second measure has a flat sign and a note with a flat. The third measure contains a flat sign and a note with a flat. The fourth measure has a flat sign and a note with a flat. The fifth measure has a flat sign and a note with a flat. The sixth measure has a flat sign and a note with a flat. The seventh measure has a flat sign and a note with a flat. The eighth measure has a flat sign and a note with a flat. The ninth measure has a flat sign and a note with a flat. The tenth measure has a flat sign and a note with a flat. The eleventh measure has a flat sign and a note with a flat. The twelfth measure has a flat sign and a note with a flat. The thirteenth measure has a flat sign and a note with a flat. The fourteenth measure has a flat sign and a note with a flat. The fifteenth measure has a flat sign and a note with a flat. The sixteenth measure has a flat sign and a note with a flat. The seventeenth measure has a flat sign and a note with a flat. The eighteenth measure has a flat sign and a note with a flat. The nineteenth measure has a flat sign and a note with a flat. The twentieth measure has a flat sign and a note with a flat. The notation ends with a circled "Fin" in a circle.



5.

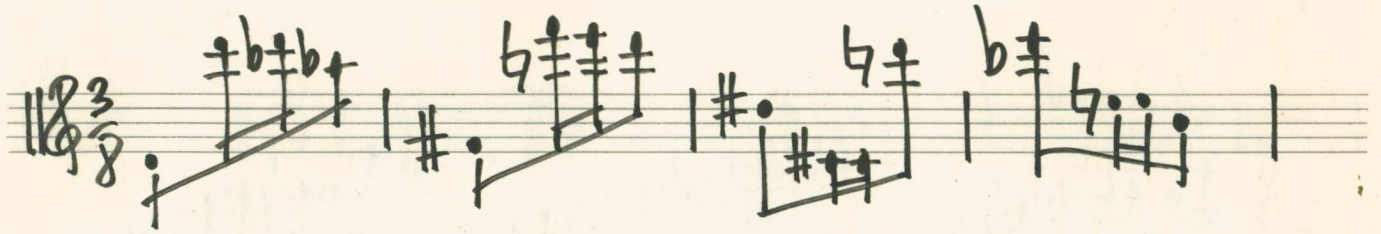
1. r leg.  
1. + 5. finger  
2. r leg.







(6.)









7.

Presto

