

Elegien —  
für Orgel und  
Sprecher  
1970

A. Sabertun

Notenheft



1971

# Elegien.

1940

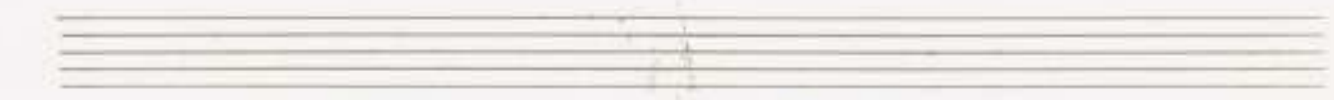
Musik: Adolf Scherbaum (Orgel)

Text: Basil McFarlane

A

TRISTE

(A)



(Sprecher)

1

Schicksal - wirst du sagen, ist Herz  
über alles, fühlloses Schicksal

beherrscht uns alle.

Wie das Tier den Reiter, wie  
die Maschine den Erbauer,  
den Maschinisten der im Abendzweifellicht  
von der Drehbank aufsteht,  
den ~~Stahl~~ Stahlstaut von der  
alten Mütze schüttelt -  
und seine Maske abnimmt. —

B

breit

Handwritten musical notation for the first system. The treble clef has a circled sharp sign (#). The bass clef has a circled sharp sign (#). The notation includes notes, rests, and bar lines.

Handwritten musical notation for the second system. The treble clef has a circled sharp sign (#). The bass clef has a circled sharp sign (#). The notation includes notes, rests, and bar lines.

Handwritten musical notation for the third system. The treble clef has a circled sharp sign (#). The bass clef has a circled sharp sign (#). The notation includes notes, rests, and bar lines.



2

Er steht ganz aufrecht,

Ihm acht

wird er sein Schicksal finden,

sein blaues,

das bestimmt ist ihm vier oder mehr

Leben zu schenken die

bis Mitternacht tanzen werden.



Bevor sein letzter Sohn  
geboren ist, braucht die Welt  
nicht zu fragen, warum er sich  
angewöhnte  
so auszusehen, als sei er immer  
vor einem  
Schraubstock gebeugt.

1

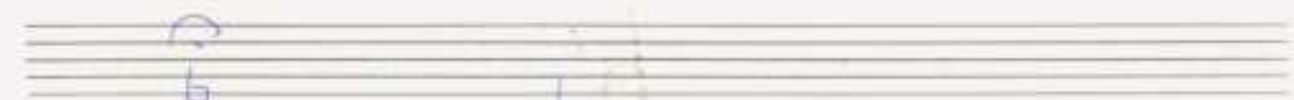
breit



Handwritten musical notation for the first system. The right hand (treble clef) contains a melodic line with a slur over the first four measures. The left hand (bass clef) contains a bass line with a slur over the first four measures. A circled 'P' is written above the first measure of the left hand. A circled 'C' is written above the first measure of the right hand. The key signature has one flat (B-flat).



Handwritten musical notation for the second system. The right hand (treble clef) contains a melodic line with a slur over the first four measures. The left hand (bass clef) contains a bass line with a slur over the first four measures. A circled 'C' is written above the first measure of the left hand. The key signature has one flat (B-flat).



Handwritten musical notation for the third system. The right hand (treble clef) contains a melodic line with a slur over the first four measures. The left hand (bass clef) contains a bass line with a slur over the first four measures. A circled 'C' is written above the first measure of the left hand. The key signature has one flat (B-flat). The text "p.c. al f" is written below the first measure of the left hand.



3

Da Tod das Ende, was bewirkt  
den Anfang? Löchelud trugen wir  
die Bürde

leicht unseres Wegs. Nun ist es vorbei.

Unverstündlich was uns zur Reise  
bewog

als wir sahen, der Weg führt zurück.

Traum der Erfüllung

nur du bist wirklich!

Nichts beginnt —

oder endet. —

D

*rassch* (*rubato*)

*rubato*

*accel...*      *rit*

(*rit*) *rubato*

*rit...*      *fff*

breit (♩)

Fine

(P=♩) lento

D.C.

4

Ohne Gebet ist kein Licht,  
weder Licht noch Lied,  
und kein Lied geheiligt.



E

lang frei

rubato



quasi



breit

Prestissimo

Handwritten musical notation for the first system. The treble staff contains notes with stems and beams, including a half note with a sharp sign. The bass staff contains notes with stems and beams, including a half note with a sharp sign. There are various rests and dynamic markings such as *pp* and *ppp*. A large slur covers the first two measures of the treble staff.

Handwritten musical notation for the second system. The treble staff contains notes with stems and beams, including a half note with a sharp sign. The bass staff contains notes with stems and beams, including a half note with a sharp sign. There are various rests and dynamic markings such as *pp* and *ppp*. A large slur covers the first two measures of the treble staff.

Handwritten musical notation for the third system. The treble staff contains notes with stems and beams, including a half note with a sharp sign. The bass staff contains notes with stems and beams, including a half note with a sharp sign. There are various rests and dynamic markings such as *pp* and *ppp*. A large slur covers the first two measures of the treble staff.

The image shows three systems of handwritten musical notation for guitar, each consisting of two staves. The notation is in blue ink and includes various musical symbols and annotations.

- System 1:** The first system shows two staves. The upper staff contains a series of chords and melodic fragments, with some notes marked with a sharp sign (#). The lower staff contains a melodic line with a sharp sign (#) and a note marked with a sharp sign (#) and a 'p' (piano) dynamic marking.
- System 2:** The second system continues the notation. The upper staff has chords and melodic lines, with a sharp sign (#) and a 'p' marking. The lower staff has a melodic line with a sharp sign (#) and a 'p' marking.
- System 3:** The third system includes a 'rit' (ritardando) marking and a '2x' (two times) marking. The notation ends with a double bar line and a 'p' marking.

Ein Lied ist Liebe, der reine

5 steile Kristall zugeender Regierung.

lento (F=1) (S=2)

Handwritten musical notation for the first system. It features a grand staff with treble and bass clefs. The treble clef part has a 4/16 time signature and a piano (pp) dynamic marking. The notes are: G4, A4, B4, C5, B4, A4, G4. The bass clef part has whole rests for the first four measures, followed by a dotted half note G3 in the fifth measure.

Handwritten musical notation for the second system. The treble clef part has notes: G4, A4, B4, C5, B4, A4, G4. The bass clef part has notes: G3, A3, B3, C4, B3, A3, G3.

Handwritten musical notation for the third system. The treble clef part has notes: G4, A4, B4, C5, B4, A4, G4. The bass clef part has notes: G3, A3, B3, C4, B3, A3, G3. A circled '91' is written in the bass clef part.

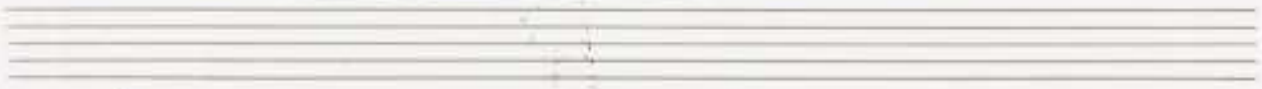


(1)

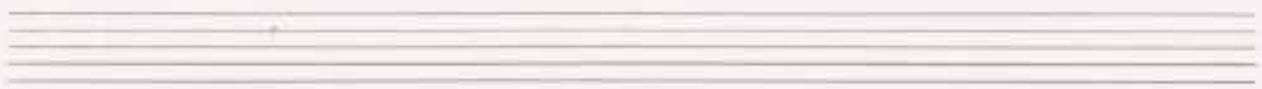
Handwritten musical notation for the first system. The treble clef staff has a 4/8 time signature and contains notes with accidentals (sharps and naturals) and a slur. The bass clef staff contains a sequence of notes with accidentals. The system concludes with a double bar line.



Handwritten musical notation for the second system. The treble clef staff features a slur over several notes and a fermata. The bass clef staff continues the sequence of notes with accidentals. The system concludes with a double bar line.



Handwritten musical notation for the third system. The treble clef staff contains notes with accidentals and slurs. The bass clef staff contains notes with accidentals and slurs. The system concludes with a double bar line.



6

Ein Lied ist Liebe, der reine  
steile Kristall zengender Regung

ist Gott —

der mit schrecklicher Gnade

innere

leuchtend

dunklen

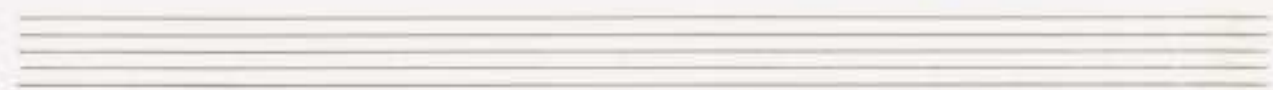
Trinne

einreißt. —————



lento

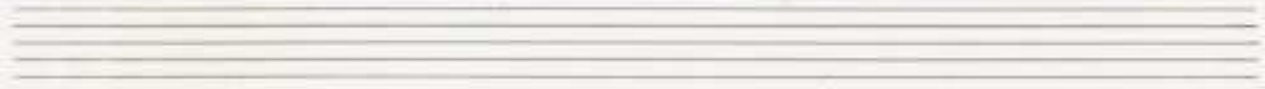
sempre crescendo... bis 7/7







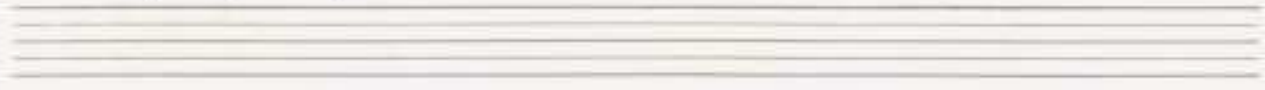
Handwritten musical notation for the first system. The treble clef staff contains a half note G4 with a slur and three '3's above it, followed by a bar line, a half note B4 with a slur and three '3's above it, and a bar line, and finally a half note G4 with a slur and three '3's above it. The bass clef staff contains a whole rest, followed by a bar line, a half note G3 with a sharp sign and a slur and three '3's above it, and a bar line, and finally a half note G3 with a slur and three '3's above it. Below the bass staff are four vertical stems: the first has a sharp sign, the second has a sharp sign, the third has a sharp sign, and the fourth has a sharp sign.



Handwritten musical notation for the second system. The treble clef staff contains a half note G4 with a slur and three '3's above it, followed by a bar line, a half note B4 with a slur and three '3's above it, and a bar line, and finally a half note G4 with a slur and three '3's above it. The bass clef staff contains a whole rest, followed by a bar line, a half note G3 with a sharp sign and a slur and three '3's above it, and a bar line, and finally a half note G3 with a slur and three '3's above it. Below the bass staff are four vertical stems: the first has a sharp sign, the second has a sharp sign, the third has a sharp sign, and the fourth has a sharp sign.



Handwritten musical notation for the third system. The treble clef staff contains a half note G4 with a slur and three '3's above it, followed by a bar line, a half note B4 with a slur and three '3's above it, and a bar line, and finally a half note G4 with a slur and three '3's above it. The bass clef staff contains a whole rest, followed by a bar line, a half note G3 with a sharp sign and a slur and three '3's above it, and a bar line, and finally a half note G3 with a slur and three '3's above it. Below the bass staff are four vertical stems: the first has a sharp sign, the second has a sharp sign, the third has a sharp sign, and the fourth has a sharp sign. A circled 'mf' dynamic marking is present in the treble clef staff.



Handwritten musical notation for the first system. The treble clef staff contains notes with accidentals (sharps) and triplets. The bass clef staff contains notes with accidentals (sharps) and a circled plus sign. Below the staff are rhythmic stems with accidentals.

Handwritten musical notation for the second system. The treble clef staff shows a key signature change to one sharp (F#) and notes with accidentals. The bass clef staff contains notes with accidentals and a circled sharp sign. Below the staff are rhythmic stems with accidentals.

Handwritten musical notation for the third system. The treble clef staff shows a key signature change to two sharps (F#, C#) and notes with accidentals. The bass clef staff contains notes with accidentals and a circled double sharp sign. Below the staff are rhythmic stems with accidentals.

Handwritten musical notation on a grand staff. The right hand part features a melodic line with a slur and the handwritten text "en xit...". The left hand part includes a circled sharp sign (#) and a right-pointing arrow. Below the staff, there are vertical tick marks and a sharp sign (#) indicating fingerings or accents.

Handwritten musical notation on a grand staff. The right hand part contains a complex melodic line with many notes and slurs. The left hand part has a simpler line with slurs. The word "lunga" is written at the bottom right of the staff. A large, wavy bracket on the right side of the page encompasses the second system and the empty systems below it.

Five empty grand staves, each consisting of five horizontal lines, arranged vertically on the page.