

Elegien ----
für Orgel und
Klavier
1874

A. Schuler

Notenheft

Elegien.

1940

Musik: Adolf Scherbaum (Orgel)

Text: Basil McFarlane

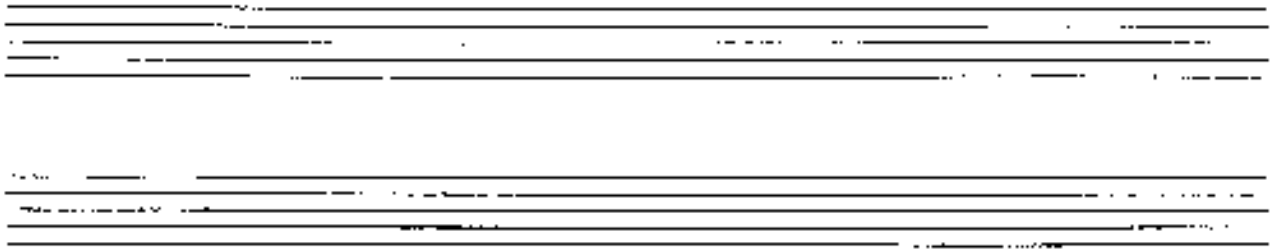
A

OSTRO

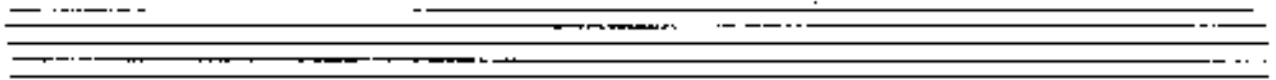
Handwritten musical notation for the first system. It consists of a treble clef staff and a bass clef staff. The treble staff begins with a treble clef, a key signature of one sharp (F#), and a common time signature (C). The first measure contains a quarter note G4, followed by a quarter rest, and then a quarter note A4 with an accent (^) above it. The second measure contains a quarter note B4, a quarter note C5, and a quarter note D5, all beamed together. The third measure contains a quarter note E5, a quarter note F#5, and a quarter note G5, all beamed together. The fourth measure contains a quarter note A5, a quarter note B5, and a quarter note C6, all beamed together. The fifth measure contains a quarter note D6, a quarter note E6, and a quarter note F#6, all beamed together. The sixth measure contains a quarter note G6, a quarter note A6, and a quarter note B6, all beamed together. The seventh measure contains a quarter note C7, a quarter note D7, and a quarter note E7, all beamed together. The eighth measure contains a quarter note F#7, a quarter note G7, and a quarter note A7, all beamed together. The bass staff contains a whole note G2 in the first measure, followed by a whole rest. The second measure contains a whole note B1, followed by a whole rest. The third measure contains a whole note C2, followed by a whole rest. The fourth measure contains a whole note D2, followed by a whole rest. The fifth measure contains a whole note E2, followed by a whole rest. The sixth measure contains a whole note F#2, followed by a whole rest. The seventh measure contains a whole note G2, followed by a whole rest. The eighth measure contains a whole note A2, followed by a whole rest. The dynamic marking 'pp' is written below the first measure.

Handwritten musical notation for the second system. It consists of a treble clef staff and a bass clef staff. The treble staff begins with a treble clef, a key signature of one sharp (F#), and a common time signature (C). The first measure contains a quarter note G4, followed by a quarter note A4, and a quarter note B4, all beamed together. The second measure contains a quarter note C5, a quarter note D5, and a quarter note E5, all beamed together. The third measure contains a quarter note F#5, a quarter note G5, and a quarter note A5, all beamed together. The fourth measure contains a quarter note B5, a quarter note C6, and a quarter note D6, all beamed together. The fifth measure contains a quarter note E6, a quarter note F#6, and a quarter note G6, all beamed together. The sixth measure contains a quarter note A6, a quarter note B6, and a quarter note C7, all beamed together. The seventh measure contains a quarter note D7, a quarter note E7, and a quarter note F#7, all beamed together. The eighth measure contains a quarter note G7, a quarter note A7, and a quarter note B7, all beamed together. The bass staff contains a whole note G2 in the first measure, followed by a whole rest. The second measure contains a whole note B1, followed by a whole rest. The third measure contains a whole note C2, followed by a whole rest. The fourth measure contains a whole note D2, followed by a whole rest. The fifth measure contains a whole note E2, followed by a whole rest. The sixth measure contains a whole note F#2, followed by a whole rest. The seventh measure contains a whole note G2, followed by a whole rest. The eighth measure contains a whole note A2, followed by a whole rest.

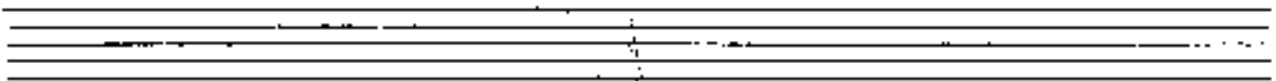
Handwritten musical notation for the third system. It consists of a treble clef staff and a bass clef staff. The treble staff begins with a treble clef, a key signature of one sharp (F#), and a common time signature (C). The first measure contains a quarter note G4, followed by a quarter note A4, and a quarter note B4, all beamed together. The second measure contains a quarter note C5, a quarter note D5, and a quarter note E5, all beamed together. The third measure contains a quarter note F#5, a quarter note G5, and a quarter note A5, all beamed together. The fourth measure contains a quarter note B5, a quarter note C6, and a quarter note D6, all beamed together. The fifth measure contains a quarter note E6, a quarter note F#6, and a quarter note G6, all beamed together. The sixth measure contains a quarter note A6, a quarter note B6, and a quarter note C7, all beamed together. The seventh measure contains a quarter note D7, a quarter note E7, and a quarter note F#7, all beamed together. The eighth measure contains a quarter note G7, a quarter note A7, and a quarter note B7, all beamed together. The bass staff contains a whole note G2 in the first measure, followed by a whole rest. The second measure contains a whole note B1, followed by a whole rest. The third measure contains a whole note C2, followed by a whole rest. The fourth measure contains a whole note D2, followed by a whole rest. The fifth measure contains a whole note E2, followed by a whole rest. The sixth measure contains a whole note F#2, followed by a whole rest. The seventh measure contains a whole note G2, followed by a whole rest. The eighth measure contains a whole note A2, followed by a whole rest.



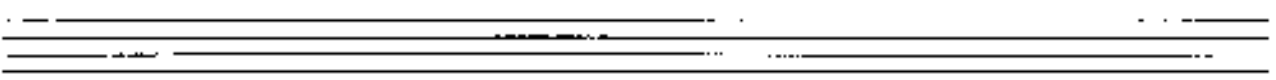
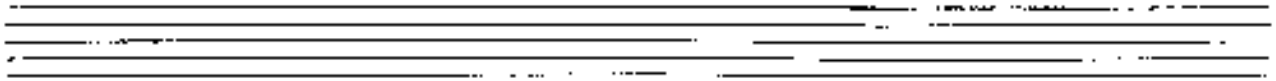
Handwritten musical notation for the first system. The upper staff contains a melodic line with notes, accidentals, and a fermata. The lower staff contains a bass line with notes and accidentals. There are some handwritten annotations like "be", "ba", and "7d".



Handwritten musical notation for the second system. The upper staff has notes and a fermata. The lower staff has notes and a fermata. There are two vertical hatched bars in the upper staff. Annotations include "add" and "7d".



Handwritten musical notation for the third system. The upper staff has notes and accidentals. The lower staff has notes and accidentals. There are some handwritten annotations like "7d".



(Sprecher)

1

Schicksal - wirst du sagen, ist Herz
über alles, fühlloses Schicksal

beherrscht uns alle.

Wie das Tier den Reiter, wie
die Maschine den Erbauer,
den Maschinisten der im Abendzwielicht
von der Drehbank aufsteht,
den ~~Stahl~~ Stahlstaut von der
alten hitze schüttelt -
und seine Maske abnimmt.

B

over

Handwritten musical notation for the first system. The treble clef staff contains notes G4, A4, B4, and C5. The bass clef staff contains notes G3, A3, B3, and C4. A circled sharp sign (#) is written in the treble clef staff. The notation includes stems, beams, and dots, suggesting a specific rhythmic pattern.

Handwritten musical notation for the second system. The treble clef staff contains notes G4, A4, B4, and C5. The bass clef staff contains notes G3, A3, B3, and C4. The notation includes stems, beams, and dots, suggesting a specific rhythmic pattern.

Handwritten musical notation for the third system. The treble clef staff contains notes G4, A4, B4, and C5. The bass clef staff contains notes G3, A3, B3, and C4. The notation includes stems, beams, and dots, suggesting a specific rhythmic pattern. There are also some handwritten annotations and markings on the staff.

Handwritten musical notation on a grand staff. The upper staff contains a melodic line with notes and accidentals, including a sharp sign. The lower staff contains a bass line with notes and accidentals, including a flat sign. A large slur is drawn over the entire system.

Handwritten musical notation on a grand staff. The upper staff contains a melodic line with notes and accidentals, including a sharp sign. The lower staff contains a bass line with notes and accidentals, including a sharp sign. A large slur is drawn over the entire system.

Handwritten musical notation on a grand staff. The upper staff contains a melodic line with notes and accidentals, including a sharp sign. The lower staff contains a bass line with notes and accidentals, including a flat sign. A large slur is drawn over the entire system.

2

Er steht ganz aufrecht,

Ihm acht-

wird er sein Schicksal finden,

sein Glendes,

das bestimmt ist ihm vier oder mehr

Leben zu schenken die

bis Mitternacht tanzen werden.

Bevor sein letzter Sohn
geboren ist, braucht die Welt
nicht zu fragen, warum er sich
angewöhnte

so anzusehen, als sei er immer
vor einem

Schraubstock gebeugt.

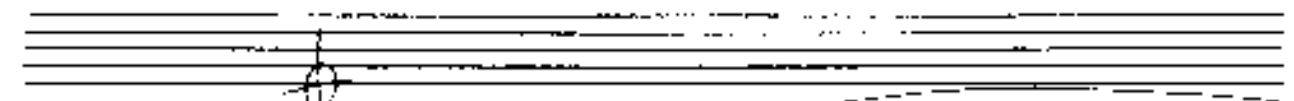
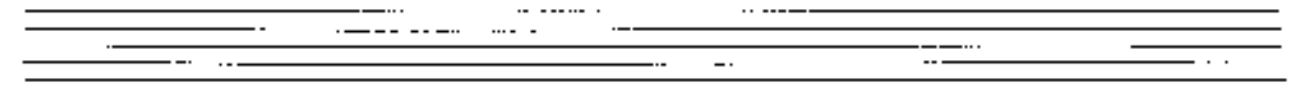
5

breit

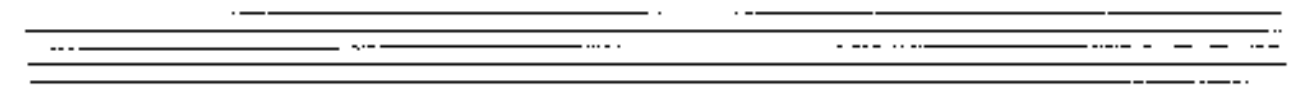
Handwritten musical notation for the first system. The treble clef staff contains a melodic line with notes G4, A4, B4, C5, and D5, with various accidentals (sharps and flats) and a fermata over the final note. The bass clef staff contains a bass line with notes F3, G3, A3, B3, and C4, also with accidentals and a fermata. The word "breit" is written above the treble staff.

Handwritten musical notation for the second system. The treble clef staff contains a melodic line with notes G4, A4, B4, and C5, with accidentals and a fermata. The bass clef staff contains a bass line with notes F3, G3, A3, and B3, with accidentals and a fermata.

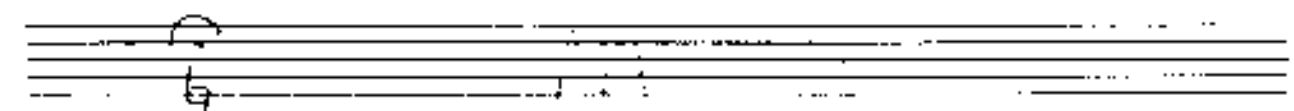
Handwritten musical notation for the third system. The treble clef staff contains a melodic line with notes G4, A4, B4, and C5, with accidentals and a fermata. The bass clef staff contains a bass line with notes F3, G3, A3, and B3, with accidentals and a fermata.



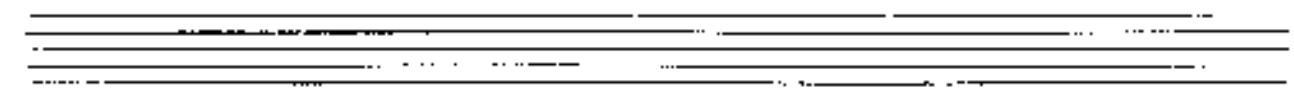
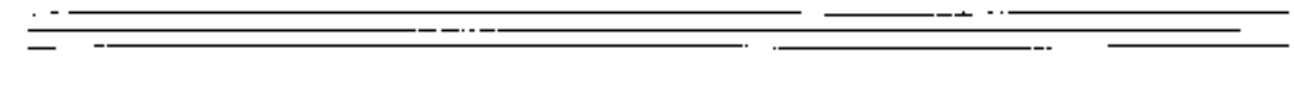
Handwritten musical notation for the first system. The right hand (treble clef) contains a melodic line with notes G4, A4, B4, C5, B4, A4, G4, F4, E4, D4, C4. The left hand (bass clef) contains a bass line with notes C3, D3, E3, F3, G3, A3, B3, C4, B3, A3, G3, F3, E3, D3, C3. A circled 'p' is written above the second measure of the left hand. A slur covers the first two measures of the right hand.



Handwritten musical notation for the second system. The right hand (treble clef) contains a melodic line with notes G4, A4, B4, C5, B4, A4, G4, F4, E4, D4, C4. The left hand (bass clef) contains a bass line with notes C3, D3, E3, F3, G3, A3, B3, C4, B3, A3, G3, F3, E3, D3, C3. A circled 'p' is written above the first measure of the left hand. A slur covers the first two measures of the right hand.



Handwritten musical notation for the third system. The right hand (treble clef) contains a melodic line with notes G4, A4, B4, C5, B4, A4, G4, F4, E4, D4, C4. The left hand (bass clef) contains a bass line with notes C3, D3, E3, F3, G3, A3, B3, C4, B3, A3, G3, F3, E3, D3, C3. A circled 'p' is written above the first measure of the left hand. A slur covers the first two measures of the right hand. The text 'p.c. al q' is written below the first measure of the left hand.



3

Da Tod das Ende, was bewirkt
den Anfang? Löshelud tragen wir
die Bürde

leicht unseres Wegs. Nun ist es vorbei.

Unverständlich was uns zur Reise
bewog

als wir sahen, der Weg führt zurück.

Traum der Erfüllung

nur du bist wirklich!

Nichts beginnt —

oder endet. —

D

rit.

rit.

rit.

avei... *rit*

(*rit.*) *rit.*

rit... *rit*

over (5)

Fine

$P = 1$ *tento*

P *pp*

D.C.
al
f
me

4

Ohne Gebet ist kein Licht,
weder Licht noch Lied,
und kein Lied geheiligt.

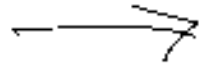
E

fang frei!

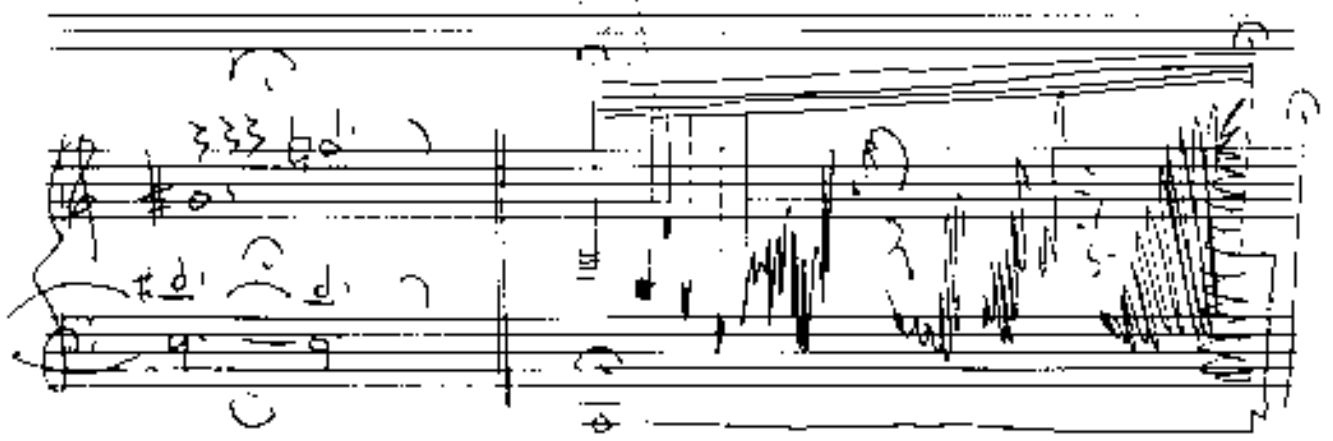
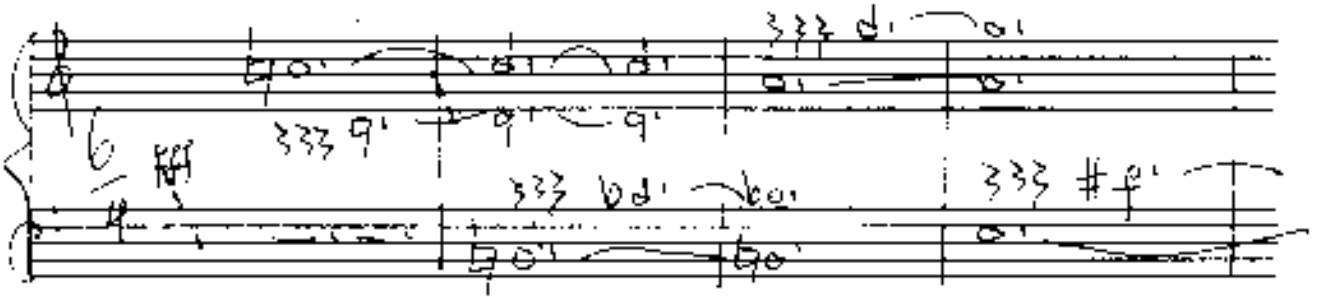
rubato



swell



over



Prestissimo

Handwritten musical notation for the first system. The treble staff contains a melodic line with notes G4, A4, B4, C5, and D5, with various accidentals and slurs. The bass staff contains a bass line with notes G3, F3, E3, and D3. The tempo marking 'Prestissimo' is written above the treble staff.

Handwritten musical notation for the second system. The treble staff continues the melodic line with notes D5, C5, B4, and A4. The bass staff continues the bass line with notes C3, B2, and A2. The notation includes slurs and dynamic markings.

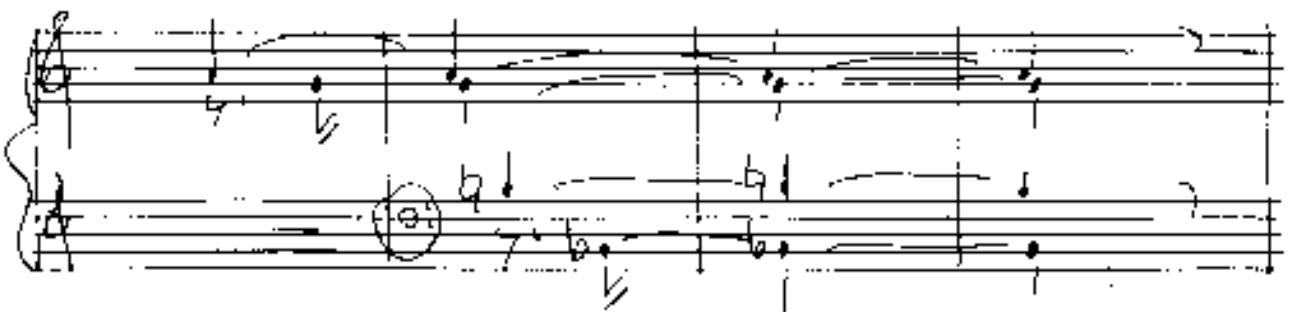
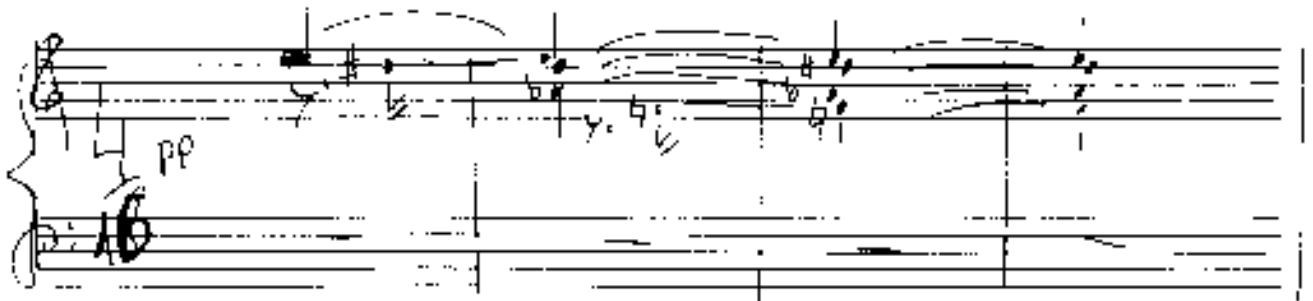
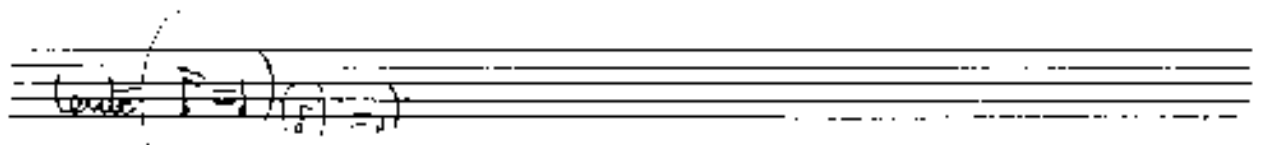
Handwritten musical notation for the third system. The treble staff concludes the melodic line with notes G4, F4, and E4. The bass staff concludes the bass line with notes G2, F2, and E2. The notation includes slurs and dynamic markings.

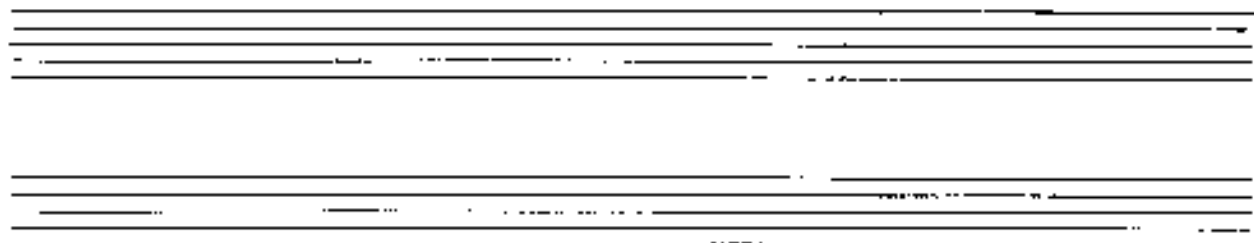
The image shows three systems of handwritten musical notation, likely for guitar and bass. Each system consists of two staves. The notation is dense and includes various musical symbols:

- System 1:** The top staff has a treble clef and contains several chords and melodic fragments. The bottom staff has a bass clef and contains a single melodic line with notes and accidentals (sharps and naturals). Brackets connect notes between the two staves.
- System 2:** Similar to the first system, with two staves. The notation continues with more complex chordal structures and melodic lines.
- System 3:** The final system. The top staff ends with a double bar line and a wavy line. The bottom staff has a double bar line and a wavy line. There are handwritten annotations: "(2x pit)" written below the bottom staff and "S.P." written to the right of the top staff.

Ein Lied ist Liebe, das reine

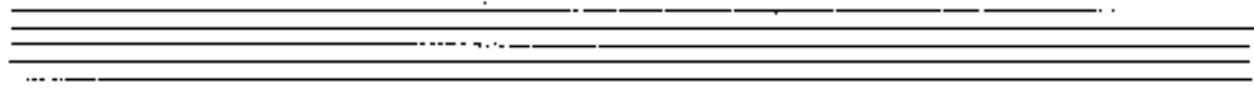
5 teile Kristall zersplitterte Regung.



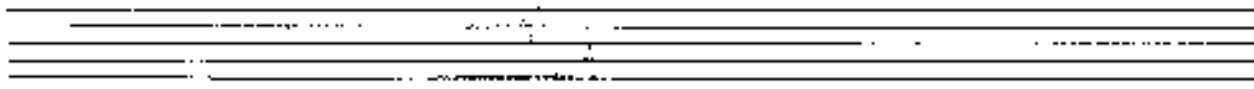


(N)

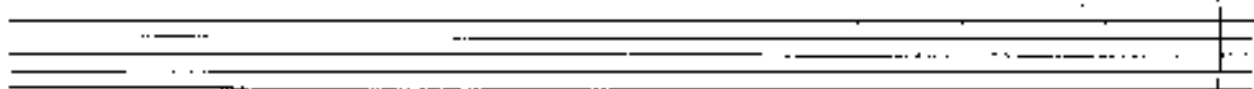
Handwritten musical notation for the first system. The upper staff contains a melodic line with notes and rests, including a slur over the final two notes. The lower staff contains a bass line with notes and rests. The notation is in a key with one sharp (F#) and a common time signature (C). The word "PVP8" is written in the left margin.



Handwritten musical notation for the second system. The upper staff contains a melodic line with notes and rests, including a slur over the final two notes. The lower staff contains a bass line with notes and rests. The notation is in a key with one sharp (F#) and a common time signature (C). The number "47" is written above the first note of the upper staff.



Handwritten musical notation for the third system. The upper staff contains a melodic line with notes and rests, including a slur over the final two notes. The lower staff contains a bass line with notes and rests. The notation is in a key with one sharp (F#) and a common time signature (C). The number "6" is written above the first note of the upper staff.



6

Ein Lied ist Liebe, der reine
steile Kristall zugehöriger Regung

ist Gott —

der mit schrecklicher Gnade

unsre

leuchtend

dunklen

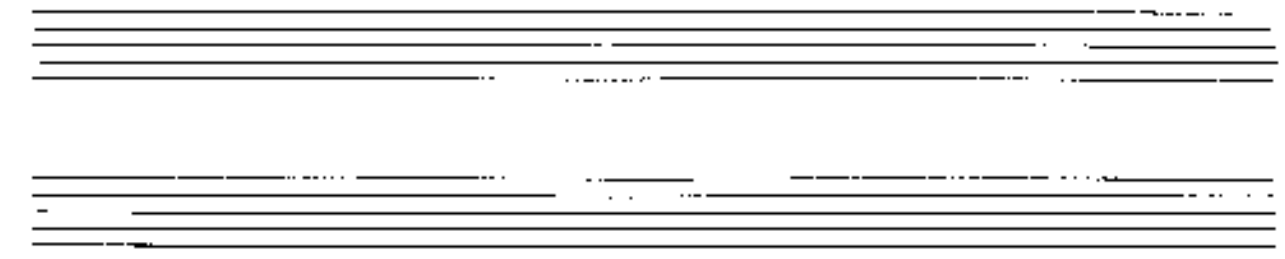
Türme

einreißt.



lento

Tempo Credo ... bis 777



Handwritten musical notation on a grand staff. The right hand (treble clef) features a melodic line with a triplet of eighth notes marked '333' and a slur over the next two notes. The left hand (bass clef) has a bass line with a sharp sign (#) and a triplet of eighth notes marked '333'. Below the staff, there are rhythmic markings: a vertical line with a sharp sign (#) followed by four vertical lines with downward-pointing stems.

Handwritten musical notation on a grand staff. The right hand (treble clef) features a melodic line with a triplet of eighth notes marked '333' and a slur over the next two notes. The left hand (bass clef) has a bass line with a sharp sign (#) and a triplet of eighth notes marked '333'. Below the staff, there are rhythmic markings: a vertical line with a sharp sign (#) followed by four vertical lines with downward-pointing stems.

Handwritten musical notation on a grand staff. The right hand (treble clef) features a melodic line with a triplet of eighth notes marked '333' and a slur over the next two notes. The left hand (bass clef) has a bass line with a sharp sign (#) and a triplet of eighth notes marked '333'. A circled 'mf' dynamic marking is present in the right hand. Below the staff, there are rhythmic markings: a vertical line with a sharp sign (#) followed by four vertical lines with downward-pointing stems.

Handwritten musical notation for the first system. The treble clef staff contains notes with slurs and a circled 'f' dynamic marking. The bass clef staff contains notes with slurs and a circled 'f' dynamic marking. There are also some handwritten annotations like '333' above notes.

Handwritten musical notation for the second system. The treble clef staff contains notes with slurs and a circled 'f' dynamic marking. The bass clef staff contains notes with slurs and a circled 'f' dynamic marking. There are also some handwritten annotations like '333' above notes.

Handwritten musical notation for the third system. The treble clef staff contains notes with slurs and a circled 'f' dynamic marking. The bass clef staff contains notes with slurs and a circled 'f' dynamic marking. There are also some handwritten annotations like '333' above notes.

gr. rit...