

Elegien —  
für Orgel und  
Sprecher  
1970

A. Sabertun

**Notenheft**

Elegien.

1940

Musik: Adolf Scherbaum (Orgel)

Text: Basil McFarlane

A

CRURO

Handwritten musical notation for the first system. It consists of two staves. The upper staff is in treble clef and contains several notes with accidentals (sharps and naturals), some with slurs and accents. The lower staff is in bass clef and contains notes with slurs. A dynamic marking 'pp' is present in the first measure.

Handwritten musical notation for the second system. It consists of two staves. The upper staff has notes with slurs and accents. The lower staff has notes with slurs and rests. There are some handwritten annotations above the notes.

Handwritten musical notation for the third system. It consists of two staves. The upper staff has notes with slurs and accents. The lower staff has notes with slurs and rests. There are some handwritten annotations above the notes.



(Sprecher)

1

Schicksal - wirst du sagen, ist Herz  
über alles, fühlloses Schicksal

beherrscht uns alle.

Wie das Tier den Reiter, wie  
die Maschine den Erbauer,

den Maschinisten der im Abendzweifellicht  
von der Drehbank aufsteht,

den ~~Stahl~~ Stahlstaub von der

alten Mütze schüttelt -

und seine Maske abwirft. —

B

buer

Handwritten musical notation for the first system. The treble clef staff begins with a circled sharp sign (#). The bass clef staff begins with a circled sharp sign (#). The notation includes notes, rests, and accidentals.

Handwritten musical notation for the second system. The treble clef staff and bass clef staff contain notes, rests, and accidentals.

Handwritten musical notation for the third system. The treble clef staff and bass clef staff contain notes, rests, and accidentals.

Handwritten musical notation on a grand staff. The right hand part features a melodic line with a slur over the first two measures and a fermata over the final note. The left hand part has a few notes in the first measure and a chord in the second. A circled 'P' is written in the first measure of the right hand.

Handwritten musical notation on a grand staff. The right hand part has a melodic line with a slur over the first two measures and a fermata over the final note. The left hand part has a few notes in the first measure and a chord in the second.

Handwritten musical notation on a grand staff. The right hand part has a melodic line with a slur over the first two measures and a fermata over the final note. The left hand part has a few notes in the first measure and a chord in the second.

2

Er steht ganz aufrecht,

Um acht

wird er sein Schicksal finden,

sein blondes,

das bestimmt ist ihm vier oder mehr

Leben zu schenken die

bis Mitternacht tanzen werden.



Bevor sein letzter Sohn

geboren ist, braucht die Welt

nicht zu fragen, warum er sich

angewöhnte

so anzusehen, als sei er immer

vor einem

Schraubstock gebeugt.

C

breit

Handwritten musical notation for the first system. The system consists of two staves. The upper staff is in treble clef and contains a melodic line with notes and accidentals (flats and naturals). The lower staff is in bass clef and contains a bass line with notes and accidentals. A circled 'p' (piano) dynamic marking is present in the second measure of the bass line. There are also some handwritten annotations above the first measure of the treble staff.

Handwritten musical notation for the second system. The system consists of two staves. The upper staff is in treble clef and contains a melodic line with notes and accidentals. The lower staff is in bass clef and contains a bass line with notes and accidentals. There are some handwritten annotations above the first measure of the treble staff.

Handwritten musical notation for the third system. The system consists of two staves. The upper staff is in treble clef and contains a melodic line with notes and accidentals. The lower staff is in bass clef and contains a bass line with notes and accidentals. Below the staves, the instruction "p.c. al f" is written. There are also some handwritten annotations above the first measure of the treble staff.

3

Da Tod das Ende, was bewirkt  
den Anfang? Löchelud trugen wir  
die Bürde

leicht unseres Wegs. Nun ist es vorbei.

Unverständlich was uns zur Reise  
bewog

als wir sahen, der Weg führt zurück.

Traum der Erfüllung

mir du bist wirklich!

Nichts beginnt —

oder endet. —

Handwritten musical notation on a grand staff. A box containing the letter 'D' is centered above the staff.

Handwritten musical notation on a grand staff. The word "rassch" is written above the treble clef. A slur labeled "rubato" spans across the first two measures. The key signature is one sharp (F#) and the time signature is 4/4. The notation includes various notes and rests.

Handwritten musical notation on a grand staff. The word "rubato" is written above the treble clef. The notation includes notes and rests. Below the staff, the words "accel..." and "rit" are written.

Handwritten musical notation on a grand staff. The word "(1) rubato" is written above the treble clef. The notation includes notes and rests. Below the staff, the words "rit..." and "ff" are written. A hatched rectangular block is present at the end of the staff.

breit (♩)

Fine

(♩ = ♩) *lento*

D.C.

4

Ohne Gebet ist kein Licht,  
weder Licht noch Lied,  
und kein Lied geheiligt.



E

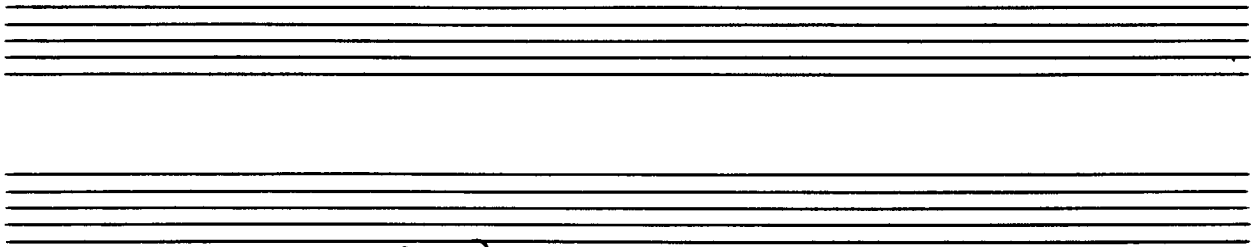
*fang frei*

pp

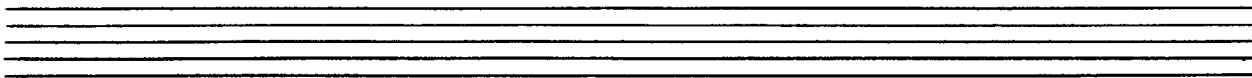
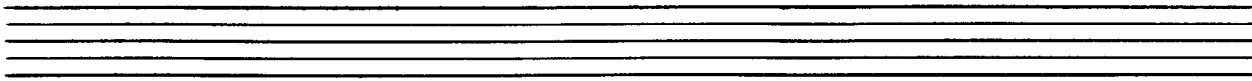
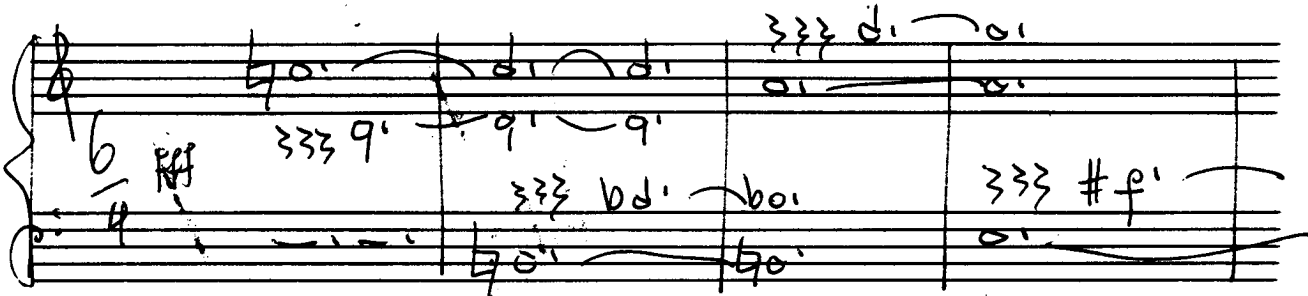
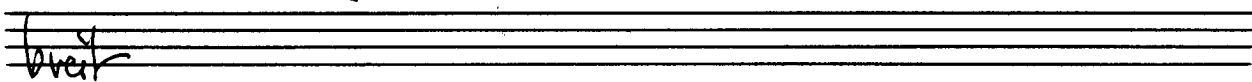
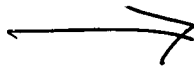
Handwritten musical notation for the second system. The treble clef staff contains a melodic line with notes and rests, including a triplet of eighth notes. The bass clef staff contains a bass line with notes and rests, including a triplet of eighth notes. There are some handwritten annotations above the notes, possibly indicating fingerings or articulation.

*rubato*

Handwritten musical notation for the third system. The treble clef staff contains a melodic line with notes and rests, including a circled 'ff' marking. The bass clef staff contains a bass line with notes and rests, including a circled 'ff' marking. There are some handwritten annotations above the notes, possibly indicating fingerings or articulation.



quasi.



*Prestissimo*

Handwritten musical notation for the first system. The treble clef staff contains a melodic line with notes G4, A4, B4, C5, and D5, with various accidentals and slurs. The bass clef staff contains a bass line with notes G3, F3, E3, and D3, also with accidentals and slurs. The tempo marking 'Prestissimo' is written above the treble staff.

Handwritten musical notation for the second system. The treble clef staff continues the melodic line with notes D5, C5, B4, and A4. The bass clef staff continues the bass line with notes C3, B2, and A2. The notation includes slurs and dynamic markings.

Handwritten musical notation for the third system. The treble clef staff concludes the melodic line with notes G4, F4, and E4. The bass clef staff concludes the bass line with notes G2, F2, and E2. The notation includes slurs and dynamic markings.

Handwritten musical score for the first system, featuring a grand staff with treble and bass clefs. The right hand contains a melodic line with slurs and ties, while the left hand has a bass line with notes and accidentals. The system is divided into two measures.

Handwritten musical score for the second system, continuing the piece. It shows similar notation to the first system, with a grand staff and two measures of music.

Handwritten musical score for the third system, which concludes the piece. It includes a grand staff with a double bar line and repeat signs. Annotations include "(2.rit.)" above the right hand and "(2.rit.)" below the left hand. A bracket on the right side is labeled "f.p."

Ein Lied ist Liebe, der reine

5 steile Kristall zugeender Regung.

lento (♩ = ♩) (♩ = ♩)

Handwritten musical notation for the first system. It features a treble clef, a 4/4 time signature, and a piano (pp) dynamic marking. The melody is written in the upper voice with various accidentals (sharps and flats) and slurs. The lower voice is mostly silent, with some faint markings.

Handwritten musical notation for the second system, continuing the melody and accompaniment from the first system. It includes treble and bass clefs, a 4/4 time signature, and various musical notations such as notes, rests, and accidentals.

Handwritten musical notation for the third system, showing further development of the piece. It includes treble and bass clefs, a 4/4 time signature, and various musical notations such as notes, rests, and accidentals.

(1)

ppp 8

6

Ein Lied ist Liebe, der reine  
steile Kristall zugeender Regung

ist Gott -

der mit schrecklicher Gnade

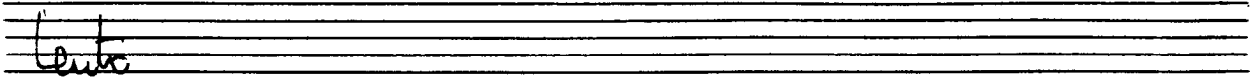
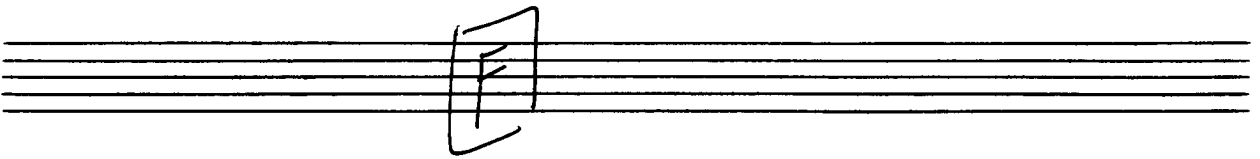
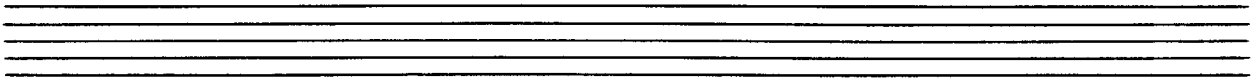
unsre

leuchtend

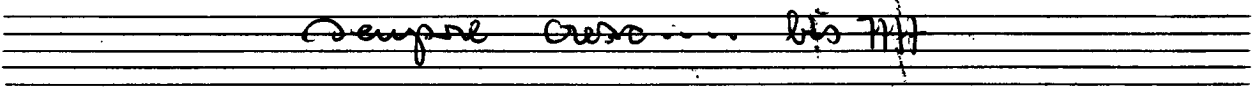
dunklen

Türme

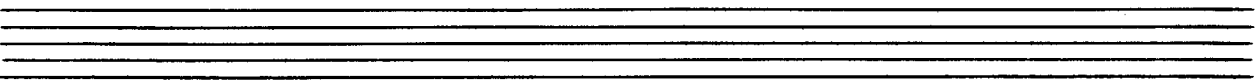
einreißt. —————



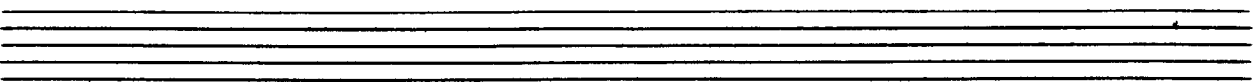
Handwritten musical notation for the first system. It features a grand staff with treble and bass clefs. The key signature has one sharp (F#). The time signature is 4/4, with a circled 'pp' (pianissimo) dynamic marking. The notation includes several notes with triplets (indicated by '333') and slurs. The bass line has a few notes, including a sharp sign.



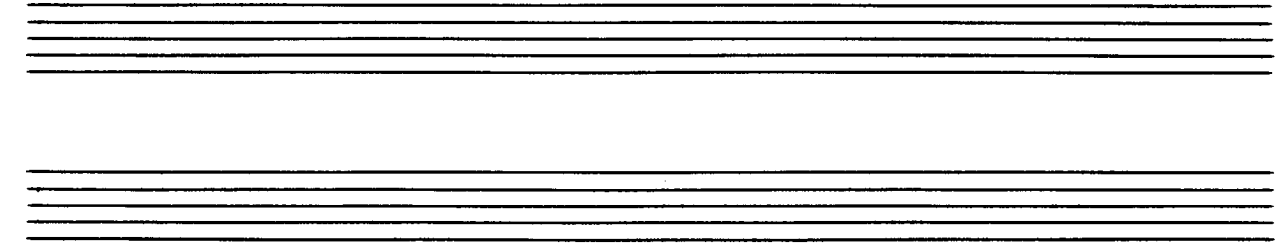
Handwritten musical notation for the second system. It continues the grand staff notation with treble and bass clefs. The key signature has one sharp. The notation includes notes with triplets and slurs. The bass line has notes and a sharp sign.



Handwritten musical notation for the third system. It continues the grand staff notation with treble and bass clefs. The key signature has one sharp. The notation includes notes with triplets and slurs. A circled 'p' (piano) dynamic marking is present. The bass line has notes and a sharp sign.







Handwritten musical notation for the first system, featuring treble and bass clefs, notes, slurs, and a '333' marking. Below the bass staff are three vertical stems with a sharp sign and a vertical bar, repeated three times.

Handwritten musical notation for the second system, featuring treble and bass clefs, notes, slurs, and a '333' marking. Below the bass staff are three vertical stems with a sharp sign and a vertical bar, repeated three times.

Handwritten musical notation for the third system, featuring treble and bass clefs, notes, slurs, and a '333' marking. Below the bass staff are three vertical stems with a sharp sign and a vertical bar, repeated three times. A circled 'mf' dynamic marking is present on the left side of the upper staff.



