

① SONATE FÜR PIANO

1970 A. Scherbaum

Ruhig

①

F 153 Scherbaum 712

Handwritten musical notation, first system. Treble clef, key signature of one sharp (F#). The system contains four measures. The first two measures feature a triplet of eighth notes with a circled 'p' dynamic marking. The last two measures feature a triplet of eighth notes with a circled 'f' dynamic marking. The bass clef accompaniment consists of chords with a circled 'p' dynamic marking.

Handwritten musical notation, second system. Treble clef, key signature of one sharp (F#). The system contains four measures. The first two measures feature a triplet of eighth notes with a circled 'p' dynamic marking. The last two measures feature a triplet of eighth notes with a circled 'f' dynamic marking. The bass clef accompaniment consists of chords with a circled 'p' dynamic marking.

Handwritten musical notation, third system. Treble clef, key signature of one sharp (F#). The system contains four measures. The first measure features a triplet of eighth notes with a circled 'f' dynamic marking. The second measure features a circled 'f' dynamic marking. The third and fourth measures feature a circled 'f' dynamic marking. The bass clef accompaniment consists of chords with a circled 'f' dynamic marking.

Handwritten musical notation, fourth system. Treble clef, key signature of one sharp (F#). The system contains four measures. The first measure features a circled 'f' dynamic marking. The second measure features a circled 'f' dynamic marking. The third measure features a circled 'f' dynamic marking. The fourth measure features a circled 'p' dynamic marking. The bass clef accompaniment consists of chords with a circled 'f' dynamic marking.

2

Handwritten musical notation for the first system. It consists of two staves: a treble clef staff and a bass clef staff. The key signature is one sharp (F#). The dynamic marking is *pp*. The treble staff has a melodic line starting with a slur and a fermata. The bass staff has a triplet of eighth notes.

Handwritten musical notation for the second system. It consists of two staves: a treble clef staff and a bass clef staff. The key signature is one sharp (F#). The dynamic marking is *pp*. The treble staff has a melodic line with a slur and a fermata. The bass staff has a melodic line with a slur and a fermata.

Handwritten musical notation for the third system. It consists of two staves: a treble clef staff and a bass clef staff. The key signature is one sharp (F#). The dynamic marking is *pp*. The treble staff has a melodic line with a slur and a fermata. The bass staff has a melodic line with a slur and a fermata.

Handwritten musical notation for the fourth system. It consists of two staves: a treble clef staff and a bass clef staff. The key signature is one sharp (F#). The dynamic marking is *pp*. The treble staff has a melodic line with a slur and a fermata. The bass staff has a melodic line with a slur and a fermata.

Handwritten musical notation on a grand staff. The right hand (treble clef) features a melodic line with a circled ff dynamic marking. The left hand (bass clef) has a wavy line with the word "Guss" written above it. The system concludes with a double bar line.

Handwritten musical notation on a grand staff. The right hand has a circled pp dynamic marking. The left hand features a wavy line. The system concludes with a double bar line.

Handwritten musical notation on a grand staff. The right hand has a circled pp dynamic marking. The left hand features a wavy line. The system concludes with a double bar line.

Handwritten musical notation on a grand staff. The right hand has a circled ppp dynamic marking. The left hand features a wavy line. The system concludes with a double bar line and a box containing the word "Die.".

(poco rit)

Handwritten musical notation for the first system. The treble clef staff contains a sequence of notes: a quarter note with a sharp sign, followed by three eighth notes, then a half note chord, another half note chord, a quarter note with a sharp sign, and finally a half note chord. The bass clef staff contains a series of chords, with a long horizontal line spanning across the system. A dynamic marking 'pp' is written to the left of the treble staff. A hairpin symbol is positioned above the treble staff.

Handwritten musical notation for the second system. The treble clef staff shows a few notes and rests, with a dynamic marking 'ppp' to the left. The bass clef staff contains notes and rests, followed by a large, circular scribble. A sharp sign is visible at the beginning of the bass staff.

2

Adagio

Handwritten musical notation for the first system. The right hand is in treble clef with a 6/4 time signature and a *pp* dynamic marking. The left hand is in bass clef. The music consists of three measures with various notes, rests, and accidentals.

Handwritten musical notation for the second system. The right hand is in treble clef with a *pp* dynamic marking. The left hand is in bass clef. The music consists of four measures with various notes, rests, and accidentals.

Handwritten musical notation for the third system. The right hand is in treble clef. The left hand is in bass clef. The music consists of four measures with various notes, rests, and accidentals.

Handwritten musical notation for the fourth system. The right hand is in treble clef. The left hand is in bass clef. The music consists of four measures with various notes, rests, and accidentals. The system ends with a double bar line and a circled 'X' symbol.

Adagio pesante

Handwritten musical notation for the first system, featuring a treble and bass clef with chords and melodic lines. The tempo is marked "Adagio pesante".

Handwritten musical notation for the second system, showing a melodic line in the treble clef and chords in the bass clef. A "pp" dynamic marking is present.

Handwritten musical notation for the third system, continuing the melodic and harmonic development. A "p" dynamic marking is circled.

Handwritten musical notation for the fourth system, concluding the piece with a "ppp" dynamic marking and a "2. + p.c. al Fine" instruction.

3

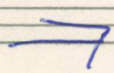
Tocatta

sempre crescendo

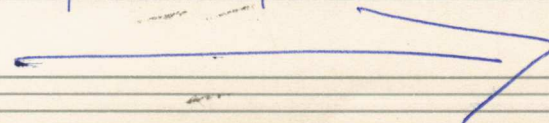
Prestissimo

ppp

sempre cresc.



pp



Handwritten musical notation for the first system. The top staff is in treble clef, showing notes and rests. The bottom staff is in bass clef, showing chords. Dynamic markings include *p* and *f*. There are also some handwritten annotations like *ms* and arrows.

Handwritten musical notation for the second system. The top staff is in treble clef, showing notes and rests. The bottom staff is in bass clef, showing chords. Dynamic markings include *p* and *f*. There are also some handwritten annotations like *ms* and arrows.

Handwritten musical notation for the third system. The top staff is in treble clef, showing notes and rests. The bottom staff is in bass clef, showing chords. Dynamic markings include *p* and *f*. There are also some handwritten annotations like *ms* and arrows.

Handwritten musical notation for the fourth system. The top staff is in treble clef, showing notes and rests. The bottom staff is in bass clef, showing chords. Dynamic markings include *p* and *f*. There are also some handwritten annotations like *ms* and arrows.

Handwritten musical notation for the first system. The top staff is in treble clef with a key signature of one sharp (F#) and a circled 'F' below it. The bottom staff is in bass clef. A large blue slur covers the entire system. The notation includes six measures of music with various rhythmic patterns and accidentals.

Handwritten musical notation for the second system. The top staff is in treble clef with a key signature of one flat (Bb) and a circled 'F#m' below it. The bottom staff is in bass clef. A large blue slur covers the entire system. The notation includes six measures of music with various rhythmic patterns and accidentals.

Handwritten musical notation for the third system. The top staff is in treble clef with a key signature of one flat (Bb) and a circled 'F#m' below it. The bottom staff is in bass clef. A large blue slur covers the entire system. The notation includes six measures of music with various rhythmic patterns and accidentals.

Pedal bis Φ

Handwritten musical notation for the fourth system. The top staff is in treble clef with a circled 'fff' below it. The bottom staff is in bass clef. A large blue slur covers the entire system. The notation consists of dense, wavy lines representing a pedal effect.

Handwritten musical notation for the fifth system. The top staff is in treble clef and the bottom staff is in bass clef. A large blue slur covers the entire system. The notation consists of dense, wavy lines representing a pedal effect.

Handwritten musical notation, first system. Treble clef staff contains notes with accidentals (sharps) and rests. Bass clef staff contains chords with accidentals (sharps) and dynamic markings like $\hat{}$ and 80 .

Handwritten musical notation, second system. Treble clef staff contains notes with accidentals (flats and sharps) and rests. Bass clef staff contains chords with accidentals (flats and sharps) and dynamic markings like $\hat{}$ and 80 .

Handwritten musical notation, third system. Treble clef staff contains notes with accidentals and rests. Bass clef staff contains notes with accidentals and rests, with a large slur over the final two measures.

Handwritten musical notation, fourth system. Treble clef staff contains notes with accidentals and rests. Bass clef staff contains notes with accidentals and rests, with a large slur over the final two measures.

Handwritten musical notation, fifth system. Treble clef staff contains notes with accidentals and rests. Bass clef staff contains notes with accidentals and rests, with a large slur over the final two measures.

Handwritten musical notation for the first system, consisting of two staves. The upper staff contains chords and rests, while the lower staff features a long, sweeping line with notes underneath, possibly representing a pedal point or a specific voicing.

Handwritten musical notation for the second system, consisting of two staves. The upper staff shows a sequence of chords and notes, and the lower staff continues with similar harmonic material.

Handwritten musical notation for the third system, consisting of two staves. The upper staff contains chords and notes, and the lower staff continues with similar harmonic material.

Handwritten musical notation for the fourth system, consisting of two staves. The upper staff is labeled "Pedal bis" and contains a series of notes numbered 1 through 10. The lower staff features a dense, wavy line of notes, likely representing a complex pedal point or tremolo effect.

Handwritten musical notation for the fifth system, consisting of two staves. The upper staff is labeled "Tempo" and "Fine" and contains a series of notes. The lower staff features a series of chords and notes. The system concludes with a large, sweeping line and the signature "A. SCHERBAUM 1970".