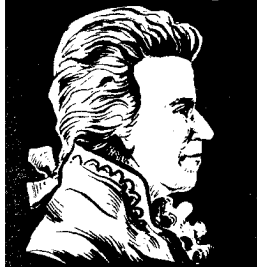


L.v. BEETHOVEN



W.A. MOZART



NOTENHEFT

F. SCHUBERT



J. HAYDN



J. STRAUSS



5 Teile für
gr. Orgel
1970

Adolf Scherbaum

Block 1

Lento (♩)

Handwritten musical notation for the first system, measures 1-2. The music is written on two staves (treble and bass clef). The first staff contains a melodic line with notes: G4 (sharp), A4, Bb4, Bb4, C5, Bb4, A4, G4. The second staff contains a bass line with notes: G2 (sharp), G2, G2, G2. The dynamic marking *pp* is present. A large slur covers both staves across the two measures.

Handwritten musical notation for the second system, measures 3-4. The music is written on two staves. The first staff contains a melodic line with notes: G4, A4, Bb4, Bb4, C5, Bb4, A4, G4. The second staff contains a bass line with notes: G2, G2, G2, G2. The dynamic marking *pp* is present. A large slur covers both staves across the two measures.

Handwritten musical notation for the third system, measures 5-6. The music is written on two staves. The first staff contains a melodic line with notes: G4, A4, Bb4, Bb4, C5, Bb4, A4, G4. The second staff contains a bass line with notes: G2, G2, G2, G2. The dynamic marking *pp* is present. A large slur covers both staves across the two measures.

Handwritten musical notation for the first system. It features a treble clef and a key signature of one sharp (F#). The notation includes various rhythmic values such as eighth and sixteenth notes. A large bracket spans across the system, and there are some scribbled-out notes.

Handwritten musical notation for the second system. It shows a treble clef and a key signature of one sharp. The notation includes eighth and sixteenth notes with stems, and some notes are beamed together.

Handwritten musical notation for the third system. It features a treble clef and a key signature of one sharp. The notation includes eighth and sixteenth notes, with some notes beamed together and stems.

Handwritten musical notation for the fourth system, ending with a double bar line. It includes a treble clef, a key signature of one sharp, and a circled "D.C. al Fine" marking. The notation includes eighth and sixteenth notes, and a final cadence.

Block (2)

(3+)

sehr rasch (enough) frei

Tempo (Presto)

Handwritten musical notation for the first system, featuring a treble and bass clef with various notes, rests, and dynamic markings.

Handwritten musical notation for the second system, continuing the piece with similar notation and dynamics.

Handwritten musical notation for the third system, ending with a double bar line and the marking "fp."

Lento (A)

Handwritten musical notation for the fourth system, starting with the tempo marking "Lento (A)" and ending with "larga" and "Fin".

Blook (3)

ad lib. breit
(1)

Handwritten musical notation for the first system. The treble staff contains a melodic line with accidentals (sharps and flats) and a slur. The bass staff contains a bass line with a slur. A large slur spans across both staves.

Handwritten musical notation for the second system. The treble staff contains a melodic line with accidentals and a slur. The bass staff contains a bass line with a slur. A large slur spans across both staves.

Handwritten musical notation for the third system. The treble staff contains a melodic line with accidentals and a slur. The bass staff contains a bass line with a slur. A large slur spans across both staves.

(1+2) / 2+ (p)

Handwritten musical notation for the first system, featuring two staves with complex rhythmic and melodic lines, including slurs and dynamic markings.

Handwritten musical notation for the second system, continuing the piece with various note values and slurs.

Handwritten musical notation for the third system, including dynamic markings like "Lento" and "Fin".

Blook (4)

leuts (f) sehr ruhig fließend

Handwritten musical notation for the first system. It features a treble clef and a bass clef. A circled 'p' dynamic marking is present. The time signature is 3/4. The music consists of quarter notes in the treble and eighth notes in the bass, with various accidentals.

Handwritten musical notation for the second system. It continues the piece with quarter notes in the treble and eighth notes in the bass.

Handwritten musical notation for the third system. It concludes the piece with quarter notes in the treble and eighth notes in the bass.

Fantasia

Block 5

frei (Fantasia)

Handwritten musical notation for the first system of the 'Fantasia' block. It features a grand staff with treble and bass clefs. The music is in a key with three sharps (F#, C#, G#) and a common time signature (C). The notation includes various rhythmic values, accidentals, and dynamic markings. A circled treble clef is present at the beginning. The system is divided into four measures by vertical bar lines.

Handwritten musical notation for the second system of the 'Fantasia' block. It features a grand staff with treble and bass clefs. The music is in a key with one sharp (F#) and a common time signature (C). The notation includes various rhythmic values, accidentals, and dynamic markings. A circled treble clef is present at the beginning. The system is divided into two measures by vertical bar lines. The second measure contains a dense, multi-voice texture with many notes.

breit

allmählich steigen →

Handwritten musical notation for the third system of the 'Fantasia' block. It features a grand staff with treble and bass clefs. The music is in a key with one flat (Bb) and a common time signature (C). The notation includes various rhythmic values, accidentals, and dynamic markings. A circled treble clef is present at the beginning. The system is divided into two measures by vertical bar lines. The first measure contains a long, flowing line with many notes. The second measure contains a dense, multi-voice texture with many notes.

ad lib.

VIVACE (sehr schnell - und appassionato) —

(Achtelbewegungen)

frei (*♩*) (*♩*)

breit (*♩*)

frei — *erweit*

ins (*Vivace überden*) →

Pol & duell!!!

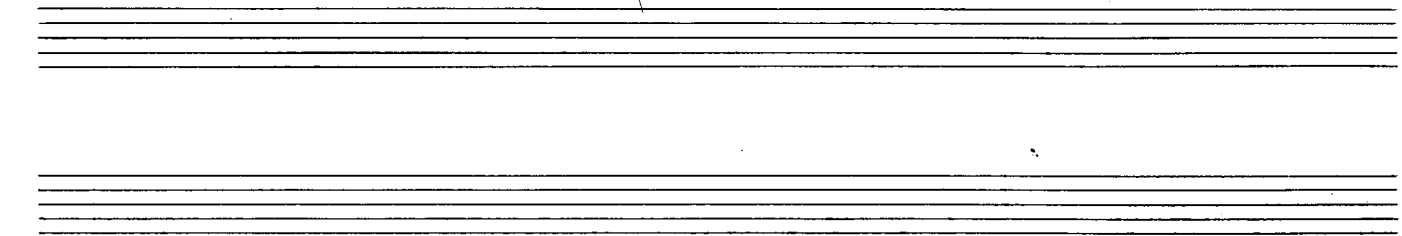
In vace (Presto)

Handwritten musical notation for the first system. The treble clef part consists of a series of quarter notes: G4, A4, B4, C5, D5, E5, F5, G5, with a fermata over the final G5. The bass clef part consists of quarter notes: G3, F3, E3, D3, C3, B2, A2, G2, with a fermata over the final G2. A slur covers the entire system.

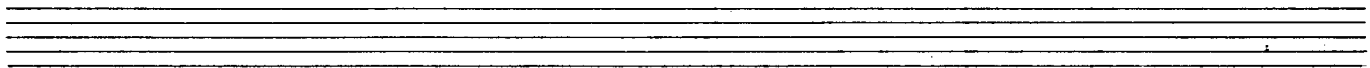
Handwritten musical notation for the second system. The treble clef part consists of quarter notes: G4, A4, B4, C5, D5, E5, F5, G5, with a fermata over the final G5. The bass clef part consists of quarter notes: G3, F3, E3, D3, C3, B2, A2, G2, with a fermata over the final G2. A slur covers the entire system.

Handwritten musical notation for the third system. The treble clef part consists of quarter notes: G4, A4, B4, C5, D5, E5, F5, G5, with a fermata over the final G5. The bass clef part consists of quarter notes: G3, F3, E3, D3, C3, B2, A2, G2, with a fermata over the final G2. A slur covers the entire system.

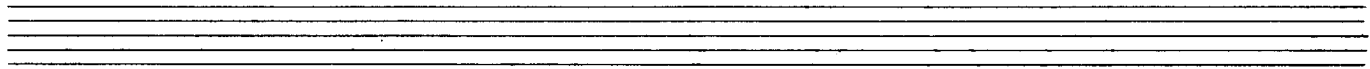
Handwritten musical notation for the fourth system. The treble clef part consists of quarter notes: G4, A4, B4, C5, D5, E5, F5, G5, with a fermata over the final G5. The bass clef part consists of quarter notes: G3, F3, E3, D3, C3, B2, A2, G2, with a fermata over the final G2. A slur covers the entire system.



Handwritten musical notation for the first system. The upper staff contains a melodic line with notes and rests, and the lower staff contains a bass line with notes and rests. A thick black horizontal bar is drawn across the top of the upper staff.



Handwritten musical notation for the second system. The upper staff contains a melodic line with notes and rests, and the lower staff contains a bass line with notes and rests. A thick black horizontal bar is drawn across the top of the upper staff.



Handwritten musical notation for the third system. The upper staff contains a melodic line with notes and rests, and the lower staff contains a bass line with notes and rests. A thick black horizontal bar is drawn across the top of the upper staff.

Handwritten musical notation for the fourth system. The upper staff contains a melodic line with notes and rests, and the lower staff contains a bass line with notes and rests. A thick black horizontal bar is drawn across the top of the upper staff. The text "großes gut" is written in cursive above the upper staff. The system ends with a double bar line.

breit (♩) (aber nicht schleppend)

Handwritten musical score for the first system. It consists of two staves: a treble clef staff and a bass clef staff. The treble staff begins with a treble clef, a key signature of one flat (B-flat), and a 4/4 time signature. The music includes a series of eighth and quarter notes, with some beamed together. A large slur covers the first two measures. The bass staff has a bass clef and contains a few notes, including a half note with a flat. There are some handwritten annotations, including a circled '4' and a circled 'b'.

Handwritten musical score for the second system. It consists of two staves: a treble clef staff and a bass clef staff. The treble staff continues with eighth and quarter notes, including a half note with a flat. A large slur covers the first two measures. The bass staff contains a few notes, including a half note with a flat. There are some handwritten annotations, including a circled 'b' and a circled 'b'.

Handwritten musical score for the third system. It consists of two staves: a treble clef staff and a bass clef staff. The treble staff continues with eighth and quarter notes, including a half note with a flat. A large slur covers the first two measures. The bass staff contains a few notes, including a half note with a flat. There are some handwritten annotations, including a circled 'b' and a circled 'b'.

Handwritten musical notation for the first system. It consists of two staves. The upper staff is in treble clef and contains a melodic line with a slur over it. The lower staff is in bass clef and contains a bass line with a slur over it. A circled number '4' is written below the first measure of the bass staff. The notation includes various notes, rests, and accidentals.

Handwritten musical notation for the second system. It consists of two staves. The upper staff is in treble clef and contains a melodic line with a slur over it. The lower staff is in bass clef and contains a bass line with a slur over it. The notation includes various notes, rests, and accidentals.

Handwritten musical notation for the third system. It consists of two staves. The upper staff is in treble clef and contains a melodic line with a slur over it. The lower staff is in bass clef and contains a bass line with a slur over it. The notation includes various notes, rests, and accidentals.

Handwritten musical notation for the first system, featuring a treble and bass clef with a melodic line and accompaniment.

Handwritten musical notation for the second system, including a fermata and the handwritten word "rit..."

lento (♩) sehr langsam

Handwritten musical notation for the third system, starting with a piano (pp) dynamic marking and a 6/4 time signature.

Handwritten musical notation for the fourth system, continuing the melodic and accompaniment lines.

breit (ausblender) ||

Handwritten musical score for the first system, featuring a grand staff with treble, alto, and bass clefs. The music includes various note values, rests, and dynamic markings like 'ff'.

Handwritten musical score for the second system, showing a grand staff with treble, alto, and bass clefs. It includes a large, expressive flourish or signature-like mark.

Lunga

1970
Adolf Scherbaum