

**Notenheft**

bitte MATERIAL SCHONER

Solo für Piano und  
Jazzschlagzeug  
(incl. lib.) Schlagbars

1970

Adolf Scherbaum

# Blues tempo

Handwritten musical notation for the first system, featuring a treble and bass staff. The treble staff is marked with *pp* and the bass staff with *pp*. The notation includes various notes, rests, and dynamic markings. A bracket on the left side of the treble staff is labeled "Solo". A bracket on the left side of the bass staff is labeled "Solo".

Handwritten musical notation for the second system, featuring a treble and bass staff. The notation includes various notes, rests, and dynamic markings. A bracket on the left side of the treble staff is labeled "Solo".

Handwritten musical notation for the third system, featuring a treble and bass staff. The notation includes various notes, rests, and dynamic markings. A bracket on the left side of the treble staff is labeled "Solo".

Handwritten musical score system 1. It consists of two staves. The upper staff has a treble clef and contains a melodic line with notes and accidentals (flats and naturals). The lower staff has a bass clef and contains a bass line with notes and accidentals. There are dynamic markings such as  $mf$  and  $dim$ , and some rhythmic notations above the staves.

Handwritten musical score system 2. It consists of two staves. The upper staff has a treble clef and contains a melodic line with notes and accidentals. The lower staff has a bass clef and contains a bass line with notes and accidentals. There are dynamic markings such as  $p$  and  $f$ , and some rhythmic notations above the staves.

Handwritten musical score system 3. It consists of two staves. The upper staff has a treble clef and contains a melodic line with notes and accidentals. The lower staff has a bass clef and contains a bass line with notes and accidentals. There are dynamic markings such as  $f$  and  $ff$ , and some rhythmic notations above the staves.

Handwritten musical score system 4. It consists of two staves. The upper staff has a treble clef and contains a melodic line with notes and accidentals. The lower staff has a bass clef and contains a bass line with notes and accidentals. There are dynamic markings such as  $pp$  and  $f$ , and some rhythmic notations above the staves.

Presto (of 2)

Handwritten musical notation for the first system. It features a treble clef, a 4/4 time signature, and a dynamic marking of *pp*. The melody consists of quarter notes with accents, including a chromatic descent in the second measure. The bass line is mostly rests.

Handwritten musical notation for the second system. The melody continues with quarter notes and accents, showing a chromatic ascent in the second measure. A dynamic marking of *f* appears in the fourth measure. The bass line remains mostly rests.

Handwritten musical notation for the third system. The melody continues with quarter notes and accents, showing a chromatic descent in the second measure. A dynamic marking of *f* is present in the first measure. The bass line is mostly rests.

Handwritten musical notation for the first system. The treble clef staff contains a sequence of notes: a half note G4 with an accent (^), a quarter note A4 with an accent (^), a quarter note B4 with an accent (^), a quarter note C5 with an accent (^), a quarter note B4 with an accent (^), a quarter note A4 with an accent (^), and a quarter note G4 with an accent (^). The grand staff includes a bass clef staff with a whole rest in the first measure and a whole note G3 in the second measure. The system concludes with a double bar line.

Handwritten musical notation for the second system. The treble clef staff begins with a whole rest, followed by a whole note chord consisting of G4, A4, and B4 with an accent (^). The second measure contains a whole note chord with G4, A4, B4, and C5, with an accent (^) over the G4. The third measure contains a whole note chord with G4, A4, B4, and C5, with an accent (^) over the G4. The fourth measure contains a whole note chord with G4, A4, B4, and C5, with an accent (^) over the G4. The grand staff includes a bass clef staff with a whole rest in the first measure, a whole note chord with G3, A3, and B3 in the second measure, and a whole note chord with G3, A3, and B3 in the third measure. The system concludes with a double bar line.

Handwritten musical notation for the third system. The treble clef staff begins with a whole note chord with G4, A4, and B4, with an accent (^) over the G4. The second measure contains a whole note chord with G4, A4, B4, and C5, with an accent (^) over the G4. The third measure contains a whole note chord with G4, A4, B4, and C5, with an accent (^) over the G4. The fourth measure contains a whole rest. The grand staff includes a bass clef staff with a whole rest in the first measure, a whole rest in the second measure, and a whole note chord with G3, A3, and B3 in the third measure. The system concludes with a double bar line.

Handwritten musical notation for the first system. The staff is in treble clef with a key signature of one sharp (F#). The melody consists of several measures with slurs and accents. The notes are: F#4, G4, A4, B4, C5, B4, A4, G4, F#4, E4, D4, C4. There are also some handwritten markings like 'ff' and 'f'.

Handwritten musical notation for the second system. The staff is in treble clef with a key signature of one sharp (F#). The melody continues from the first system. The notes are: B4, A4, G4, F#4, E4, D4, C4, B3, A3, G3, F#3, E3, D3, C3. There are also some handwritten markings like 'ff' and 'f'.

Handwritten musical notation for the third system. The staff is in treble clef with a key signature of one sharp (F#). The melody continues from the second system. The notes are: B3, A3, G3, F#3, E3, D3, C3, B2, A2, G2, F#2, E2, D2, C2. There are also some handwritten markings like 'ff' and 'f'.





Handwritten musical notation on a grand staff. The right hand has a melodic line with eighth and sixteenth notes, including a trill-like figure. The left hand has a few notes in the first measure.

Handwritten musical notation on a grand staff. The right hand has a melodic line with eighth notes and a trill. The left hand has chords with upward-pointing arrows above them.

Handwritten musical notation on a grand staff. The right hand has a melodic line with eighth notes and a trill. The left hand has chords with upward-pointing arrows above them.

Handwritten musical notation on a grand staff. The music begins with a treble clef and a key signature of two sharps (F# and C#). The first measure contains a whole note chord with notes F#4, C#5, and G#4. The second measure contains a whole note chord with notes F#4, C#5, and G#4. The third measure contains a whole note chord with notes F#4, C#5, and G#4. The fourth measure contains a whole note chord with notes F#4, C#5, and G#4. The fifth measure contains a whole note chord with notes F#4, C#5, and G#4. The sixth measure contains a whole note chord with notes F#4, C#5, and G#4. The seventh measure contains a whole note chord with notes F#4, C#5, and G#4. The eighth measure contains a whole note chord with notes F#4, C#5, and G#4. The notation is somewhat sketchy and includes some additional markings like a sharp sign and a squiggly line.

Handwritten musical notation on a grand staff. The music consists of whole rests in both the treble and bass staves. A dynamic marking of *pp* (pianissimo) is written in the bass staff. A *dim* (diminuendo) marking with a wedge symbol is also present in the bass staff. The notation is very sparse and appears to be a placeholder or a specific instruction.

Handwritten musical notation on a grand staff. The music begins with a treble clef and a key signature of two sharps (F# and C#). The first measure contains a whole note chord with notes F#4, C#5, and G#4. The second measure contains a whole note chord with notes F#4, C#5, and G#4. The third measure contains a whole note chord with notes F#4, C#5, and G#4. The fourth measure contains a whole note chord with notes F#4, C#5, and G#4. The notation is somewhat sketchy and includes some additional markings like a sharp sign and a squiggly line. The word " sempre cresc." is written above the first measure, and " sempre cresc." is written above the fourth measure. A *pp* (pianissimo) marking is written in the bass staff.

Handwritten musical notation for the first system. It features a treble clef, a key signature of one flat (Bb), and a 4/4 time signature. The melody consists of three measures: the first has notes G4, A4, Bb4, and C5 with accents; the second has notes Bb4, C5, and D5 with accents; the third has notes C5, Bb4, and A4. The bass line has rests in the first two measures and a chord of C5, Bb4, and A4 in the third, marked with a forte 'f' dynamic.

Handwritten musical notation for the second system. It features a treble clef and a key signature of one sharp (F#). The melody consists of three measures: the first has notes G4, A4, B4, and C5 with accents; the second has notes B4, C5, D5, and E5 with accents; the third has notes D5, C5, B4, and A4 with accents. The bass line has rests in all three measures.

Handwritten musical notation for the third system. It features a treble clef and a key signature of one sharp (F#). The melody consists of three measures: the first has notes G4, A4, B4, and C5 with accents; the second has notes B4, C5, D5, and E5 with accents; the third has notes D5, C5, B4, and A4 with accents. The bass line has rests in all three measures.

Handwritten musical notation for the first system. The first staff (treble clef) contains a melodic line with a slur over the first two measures, a fermata in the third, and a dynamic marking 'p' in the fourth. The second staff (bass clef) contains a bass line with a dynamic marking 'p' and a sharp sign in the fourth measure.

Handwritten musical notation for the second system. The first staff (treble clef) contains a melodic line with a slur over the first two measures, a triplet of eighth notes in the third, and a dynamic marking 'p' in the fourth. The second staff (bass clef) contains a bass line with a dynamic marking 'p' in the fourth measure.

Handwritten musical notation for the third system. The first staff (treble clef) contains a melodic line with a slur over the first two measures, a triplet of eighth notes in the third, and a dynamic marking 'p' in the fourth. The second staff (bass clef) contains a bass line with a dynamic marking 'p' in the fourth measure.

Handwritten musical notation on a grand staff. The treble clef staff contains a melodic line with a slur over the first two measures, a triplet of eighth notes in the second measure, and two accents in the third measure. The bass clef staff is empty.

Handwritten musical notation on a grand staff. The treble clef staff contains a melodic line with a slur over the first two measures, a triplet of eighth notes in the second measure, a slur over the next two measures, and a triplet of eighth notes in the fourth measure. The bass clef staff is empty.

Handwritten musical notation on a grand staff. The treble clef staff contains a melodic line with a slur over the first two measures, a slur over the next two measures, and a triplet of eighth notes in the third measure. The bass clef staff is empty.

Handwritten musical notation for the first system. It consists of two staves. The top staff is in treble clef and contains a half note chord (F4, C5) with an accent (^) and a quarter note (G4) with an accent (^). The bottom staff is in bass clef and contains a half note chord (F2, C3) with an accent (^), followed by a quarter note (G2) with an accent (^), and then two quarter notes (F2, C3) with accents (^).

Handwritten musical notation for the second system. The top staff (treble clef) has a quarter note (G4) with an accent (^), followed by a quarter note (F4) with an accent (^), and then a half note chord (F4, C5) with an accent (^). The bottom staff (bass clef) has a half note chord (F2, C3) with an accent (^), followed by a half note chord (F2, C3) with an accent (^), and then a half note chord (F2, C3) with an accent (^).

Handwritten musical notation for the third system. The top staff (treble clef) has a quarter note (G4) with an accent (^), followed by a quarter note (F4) with an accent (^), and then a half note chord (F4, C5) with an accent (^). The bottom staff (bass clef) has a half note chord (F2, C3) with an accent (^), followed by a half note chord (F2, C3) with an accent (^), and then a half note chord (F2, C3) with an accent (^). A dynamic marking 'pp' is present in the bottom staff. A fermata is written over the final measure of the system.

*Allegro cresc.*

Handwritten musical notation for the first system. It consists of a treble clef staff and a bass clef staff. The treble staff contains a melodic line with quarter notes and eighth notes, starting with a dynamic marking of *pp*. The bass staff is mostly empty, with a few horizontal lines indicating rests or a very low register.

Handwritten musical notation for the second system. It continues the melodic line from the first system in the treble clef. The notes are mostly quarter notes with some eighth notes. The bass staff remains empty.

Handwritten musical notation for the third system. It features a treble clef staff and a bass clef staff. The treble staff contains a melodic line with quarter notes and eighth notes, starting with a dynamic marking of *f*. The bass staff contains a few notes, including a triplet of eighth notes. The key signature changes to one flat (Bb) in the final measure.

Handwritten musical notation for the first system. It consists of a treble clef on the left and a grand staff with two staves. The first staff contains several measures of music with notes, rests, and accidentals (sharps and flats). The second staff contains rests and some notes. The notation is somewhat sketchy and includes various markings such as accents and slurs.

Handwritten musical notation for the second system. It consists of a treble clef on the left and a grand staff with two staves. The first staff contains several measures of music with notes, rests, and accidentals (sharps and flats). The second staff contains rests and some notes. The notation is somewhat sketchy and includes various markings such as accents and slurs.

Handwritten musical notation for the third system. It consists of a treble clef on the left and a grand staff with two staves. The first staff contains several measures of music with notes, rests, and accidentals (sharps and flats). The second staff contains rests and some notes. The notation is somewhat sketchy and includes various markings such as accents and slurs.



Handwritten musical notation for the first system. The system consists of two staves. The upper staff is in treble clef with a key signature of one flat (B-flat). The melody begins with a whole rest, followed by a half rest, and then a series of eighth notes: B-flat, A, G, F, E, D, C, B-flat. There are slurs over the first two groups of notes and an accent (^) over the first note of the second group. The lower staff contains whole rests for the first two measures and a sharp sign (#) in the third measure.

Handwritten musical notation for the second system. The system consists of two staves. The upper staff is in treble clef with a key signature of one flat. The melody starts with a quarter note B-flat, followed by quarter notes A, G, F, E, D, C, B-flat. There are slurs over the first two groups of notes and accents (^) over the last three notes. The lower staff contains whole rests for the first two measures and a half rest in the third measure.

Handwritten musical notation for the third system. The system consists of two staves. The upper staff is in treble clef with a key signature of one flat. The melody begins with a quarter note B-flat, followed by quarter notes A, G, F, E, D, C, B-flat. There are slurs over the first two groups of notes and accents (^) over the first notes of the second and third groups. The lower staff contains whole rests for the first two measures and a half rest in the third measure.

Handwritten musical notation on a grand staff. The upper staff contains a melodic line with eighth and sixteenth notes, including a triplet of eighth notes. The lower staff is mostly empty with some horizontal lines.

Handwritten musical notation on a grand staff. The upper staff features a series of chords and notes with accents (>) and slurs. The lower staff contains a bass line with notes and rests.

Handwritten musical notation on a grand staff. The upper staff has a melodic line with notes and slurs, ending with a bracketed section labeled "Gloss". The lower staff is mostly empty.

Handwritten musical notation on a grand staff. The first measure contains a sharp sign (#) and the text "dim" with an arrow pointing to the right. The subsequent three measures are empty.

pp (sempre cresc... →)

Handwritten musical notation on a grand staff. The first measure is marked "pp" and contains four eighth notes with accents (^) above them. The second measure contains two eighth notes with accents (^) above them. The third measure contains four eighth notes with accents (^) above them. The fourth measure contains two eighth notes with accents (^) above them. There are horizontal lines below the staff in the second and third measures.

Handwritten musical notation on a grand staff. The first measure contains two eighth notes with flats (b) and accents (^) above them. The second measure contains two eighth notes with flats (b) and accents (^) above them. The third and fourth measures contain horizontal lines below the staff.

Handwritten musical notation for the first system. The system consists of two staves. The upper staff is in treble clef with a key signature of one sharp (F#). The melody begins with a quarter note F#4, followed by a quarter note G4, and then a series of eighth notes: A4, B4, C5, B4, A4, G4, F#4. The melody is slurred across three measures. The lower staff is in bass clef and contains whole rests for all three measures.

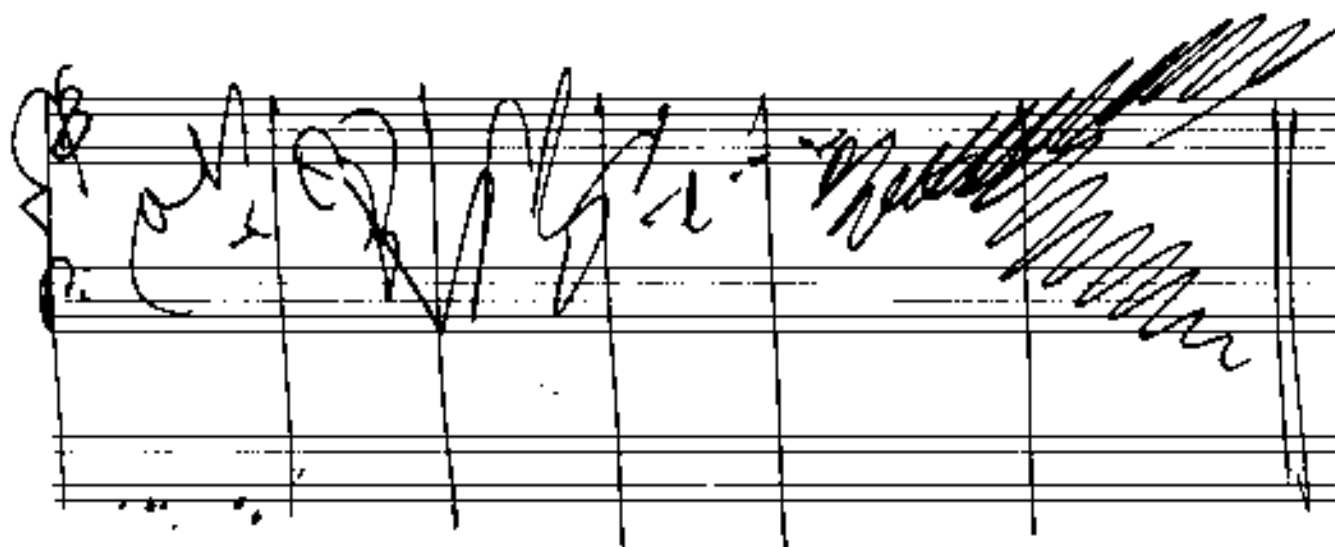
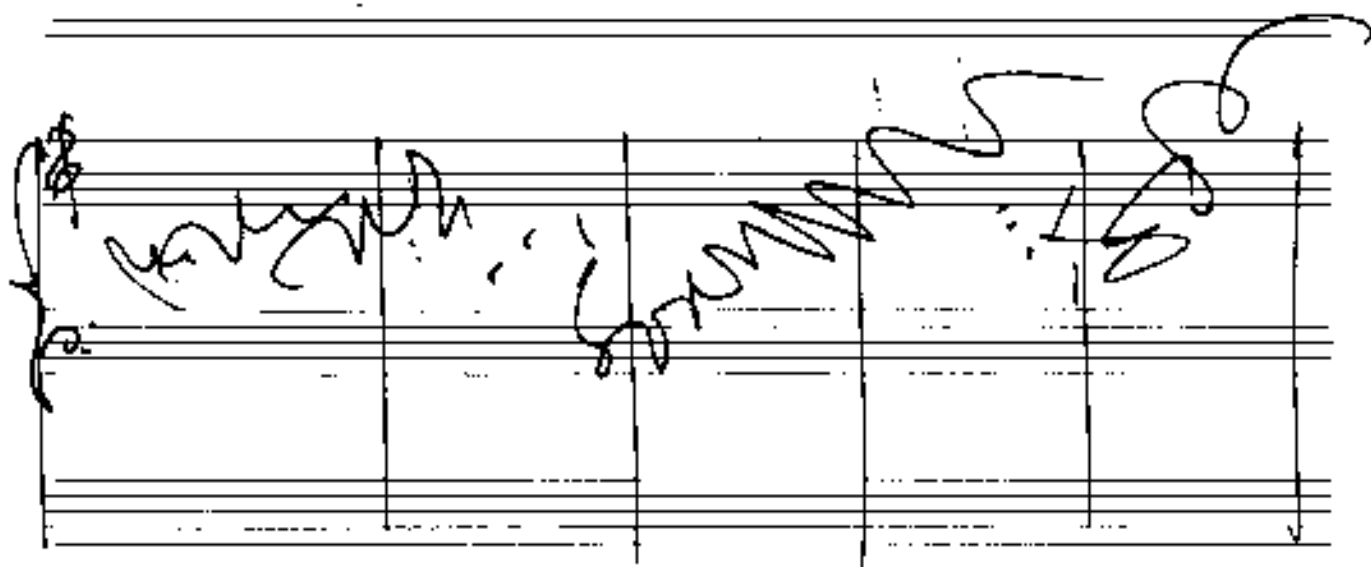
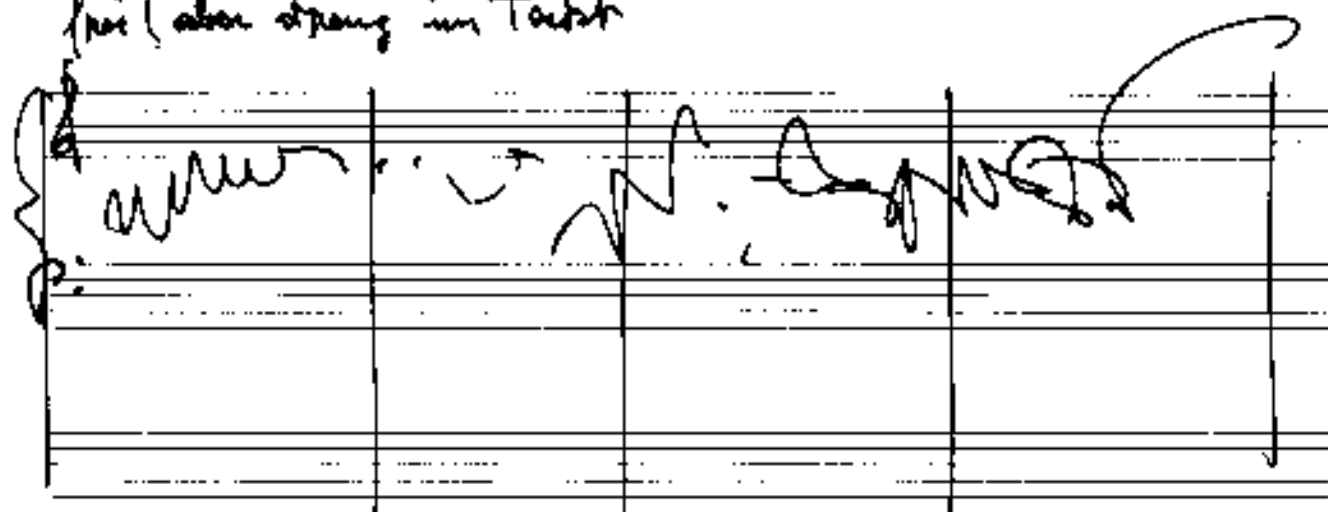
Handwritten musical notation for the second system. The system consists of two staves. The upper staff is in treble clef with a key signature of one sharp (F#). The melody begins with a quarter note F#4, followed by a quarter note G4, and then a series of eighth notes: A4, B4, C5, B4, A4, G4, F#4. The melody is slurred across three measures. The lower staff is in bass clef and contains whole rests for all three measures.

Handwritten musical notation for the third system. The system consists of two staves. The upper staff is in treble clef with a key signature of one sharp (F#). The melody begins with a quarter note F#4, followed by a quarter note G4, and then a series of eighth notes: A4, B4, C5, B4, A4, G4, F#4. The melody is slurred across three measures. The lower staff is in bass clef and contains whole rests for all three measures.





frei (oben streng im Takt)

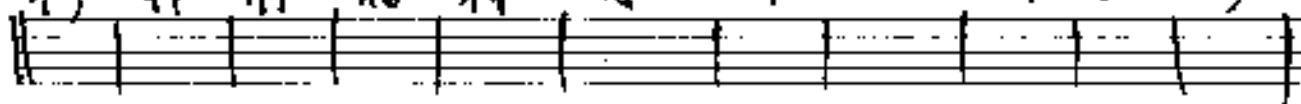


Solologang Solo (ad lib.) 100 Takte (oder weniger)

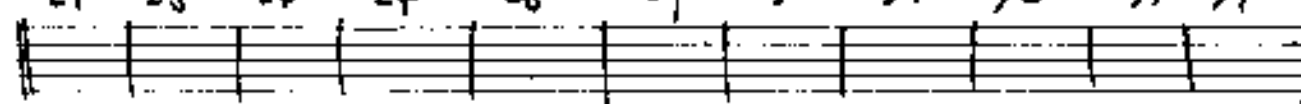
1 2 3 4 5 6 7 8 9 10 11 12



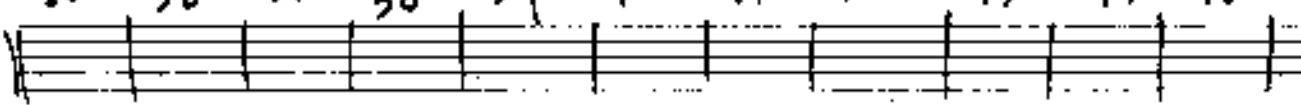
13 14 15 16 17 18 19 20 21 22 23



24 25 26 27 28 29 30 31 32 33 34



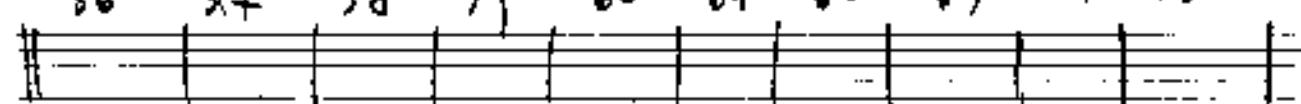
35 36 37 38 39 40 41 42 43 44 45



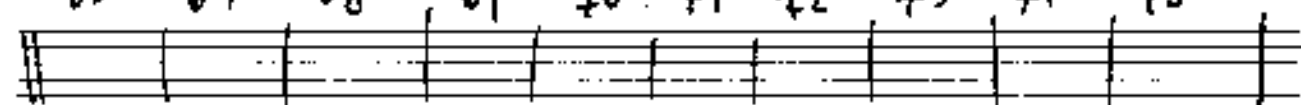
46 47 48 49 50 51 52 53 54 55



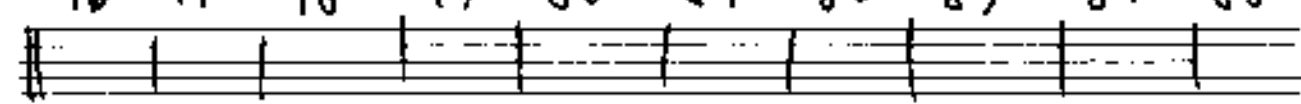
56 57 58 59 60 61 62 63 64 65



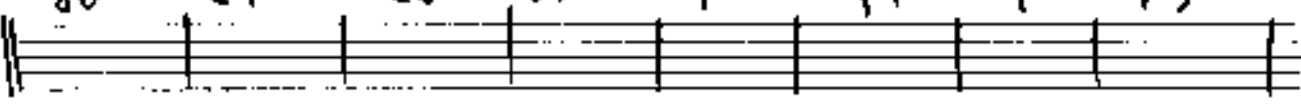
66 67 68 69 70 71 72 73 74 75



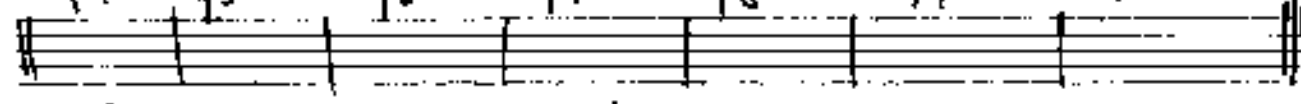
76 77 78 79 80 81 82 83 84 85



86 87 88 89 90 91 92 93



94 95 96 97 98 99 100



(Solologang. Solo) letzter Takte Triolenrhythmus wegen  
Übergang zu  
Pianissimo.



*Plaus tempo*

Handwritten musical notation for guitar and bass. The guitar part is in treble clef with a key signature of one sharp (F#) and a 4/4 time signature. It features several chords with triplets and a final measure with a fermata. The bass part is in bass clef with a key signature of one sharp (F#) and a 4/4 time signature, featuring a series of chords with triplets. Above the guitar staff, there are additional chord diagrams and a key signature change to one flat (Bb).

*letzten 4 Takte  
moderato*

Handwritten musical notation for guitar and bass. The guitar part is in treble clef with a key signature of one sharp (F#) and a 4/4 time signature. It features several chords with triplets and a final measure with a fermata. The bass part is in bass clef with a key signature of one sharp (F#) and a 4/4 time signature, featuring a series of chords with triplets. Above the guitar staff, there are additional chord diagrams and a key signature change to one flat (Bb). The notation ends with a double bar line and a cross-hatched box labeled "Fine".