

L.V. BEETHOVEN



W.A. MOZART



# NOTENHEFT

F. SCHUBERT



J. HAYDN



J. STRAUSS



MADE IN AUSTRIA



## STUDIE IN ES

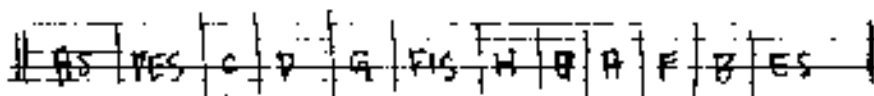
für Piano (1933)

Solobass (1933)

Schlagzeug (1933)

1971

Adolf Scherbaum



hier ist der endgültige Mensch -  
 der im Zwielicht lebt -  
 der das Zwielicht ist -  
 immer.

Geburt und Tod erkennen,  
 in einer Empfindung,  
 vorwärts und rückwärts schauen mit einem Auge,  
 das Ganze sehen,  
 die Wahrheit wissen,  
 die Welt verstehen und ohne Welt sein:

In diesem Licht, das kein Licht ist,  
 in dieser Zeit, die keine Zeit ist, sein  
 und frei sein:

das ist der endgültige Mensch  
 der im Zwielicht lebt,  
 der das Zwielicht ist, immer!

lento

Violino

Violoncello

Schlagwerk

pp

f

133

cresc. →

3

Handwritten musical score for the first system. It consists of four staves: piano (p), violin (v), cello (c), and a fourth staff (likely double bass). The piano part starts with a forte (ff) dynamic and includes a circled '1'. The violin and cello parts have various notes, rests, and slurs. The fourth staff has a circled '1' and some rhythmic markings.

appassionata (nicht schleppend.)

Handwritten musical score for the second system. It continues the four-staff arrangement. The piano part is marked with a circled 'fff' and a circled '2'. The violin and cello parts continue with their respective parts. The fourth staff has a circled '2' and some rhythmic markings.

Handwritten musical score for the first system. It consists of three staves. The top staff is for the piano accompaniment, showing chords and melodic lines with slurs. The middle staff is for the vocal line, with notes and rests. The bottom staff is for the piano accompaniment, showing a rhythmic pattern. The system is divided into three measures.

Handwritten musical score for the second system. It consists of three staves. The top staff is for the piano accompaniment, showing chords and melodic lines with slurs. The middle staff is for the vocal line, with notes and rests. The bottom staff is for the piano accompaniment, showing a rhythmic pattern. The system is divided into three measures.

2

Handwritten musical score for the third system. It consists of four staves. The top staff is for the piano accompaniment, showing chords and melodic lines with slurs. The second staff is for the vocal line, with notes and rests. The third staff is for the piano accompaniment, showing a rhythmic pattern. The bottom staff is for the piano accompaniment, showing a rhythmic pattern. The system is divided into four measures.

Handwritten musical score system 1. It consists of four staves. The top staff is a treble clef with notes and rests. The second staff is a bass clef with notes and rests. The third staff is a bass clef with notes and rests. The bottom staff is a bass clef with notes and rests. There are various musical notations including accidentals (flats, naturals), slurs, and dynamic markings.

Handwritten musical score system 2. It consists of four staves. The top staff is a treble clef with notes and rests. The second staff is a bass clef with notes and rests. The third staff is a bass clef with notes and rests. The bottom staff is a bass clef with notes and rests. There are various musical notations including accidentals, slurs, and dynamic markings.

Handwritten musical score system 3. It consists of four staves. The top staff is a treble clef with notes and rests. The second staff is a bass clef with notes and rests. The third staff is a bass clef with notes and rests. The bottom staff is a bass clef with notes and rests. There are various musical notations including accidentals, slurs, and dynamic markings.



zurück ... .. im Tempo

Handwritten musical score system 1, consisting of four staves. The top staff features a treble clef and a series of notes with a bracket underneath, labeled with the number '3'. The second staff has a bass clef and contains several chords with upward-pointing arrows above them. The third staff has a bass clef and contains a series of notes with a bracket underneath. The fourth staff has a bass clef and contains a few notes with upward-pointing arrows above them. The system is divided into three measures by vertical bar lines. A circled number '4' is located at the end of the system.

Handwritten musical score system 2, consisting of four staves. The top staff has a treble clef and contains a series of notes with a bracket underneath, labeled with the number '3'. The second staff has a bass clef and contains several chords with upward-pointing arrows above them. The third staff has a bass clef and contains a series of notes with a bracket underneath. The fourth staff has a bass clef and contains a few notes with upward-pointing arrows above them. The system is divided into three measures by vertical bar lines.

Handwritten musical score system 3, consisting of four staves. The top staff has a treble clef and contains several chords with upward-pointing arrows above them. The second staff has a bass clef and contains several chords with upward-pointing arrows above them. The third staff has a bass clef and contains a series of notes with a bracket underneath. The fourth staff has a bass clef and contains a few notes with upward-pointing arrows above them. The system is divided into three measures by vertical bar lines. A circled number '4' is located at the end of the system.



Zeit 5

Sehr ruhig

Zeit

Tempo

Pedal

6

Handwritten musical score for the first system. It consists of a grand staff with three staves: treble, alto, and bass clefs. The music is written in a key signature of one flat (B-flat major or D minor). The first staff contains a melodic line with notes and rests, including a fermata. The second staff contains a more complex melodic line with many beamed notes. The third staff contains a bass line with notes and rests. Dynamic markings include 'p' (piano) and 'f' (forte). There are also some handwritten annotations like '6' and '9' above the first staff.

Handwritten musical score for the second system. It continues the piece with similar notation. The first staff has a melodic line with a fermata. The second staff has a complex melodic line. The third staff has a bass line. Dynamic markings include 'p' and 'f'. There are also some handwritten annotations like '9' and '10' above the first staff.

Handwritten musical score for the third system. It concludes the piece with various musical notations. The first staff has a melodic line with a fermata. The second staff has a complex melodic line. The third staff has a bass line. Dynamic markings include 'p' and 'f'. There are also some handwritten annotations like '10' and '11' above the first staff.

7

rit. ————— lento

Handwritten musical score for the first system. It features a treble clef, a key signature of one flat, and a common time signature. The music consists of three measures. The first measure has a dynamic marking 'p' and a '3' indicating a triplet. The second measure has a slur over a group of notes with accents (^) above them. The third measure has a dynamic marking 'p'.

Handwritten musical score for the second system. It features a treble clef, a key signature of one flat, and a common time signature. The music consists of three measures. The first measure has a dynamic marking 'p' and a 'cresc.' marking with an arrow. The second measure has a dynamic marking 'Beb Solo' and a downward arrow. The third measure has a dynamic marking 'ff' and a downward arrow.

Handwritten musical score for the third system. It features a treble clef, a key signature of one flat, and a common time signature. The music consists of three measures. The first measure has a dynamic marking 'Beb Solo' and a downward arrow. The second measure has a dynamic marking 'p' and a downward arrow. The third measure has a dynamic marking 'ff' and a downward arrow.

9

Handwritten musical notation on a grand staff. The first measure contains a forte dynamic (**f**) and the instruction "accel." with an arrow pointing right. The second measure features a triplet of notes. The third measure has accents (^) over several notes and "accel." with an arrow pointing right.

Handwritten musical notation on a grand staff. The first measure has a forte dynamic (**f**) and an arrow pointing right. The second measure has a forte dynamic (**f**) and an arrow pointing left labeled "zurück". The third measure has a forte dynamic (**f**) and an arrow pointing right labeled "vorwärts".

Handwritten musical notation on a grand staff. The first measure has a forte dynamic (**f**) and the instruction "breit". The second measure has a forte dynamic (**f**) and the instruction "din + rit...". The third measure has a forte dynamic (**f**) and a circled **p**. The fourth measure has a forte dynamic (**f**) and a circled **p**. A circled "10" is in the top right corner. At the bottom right, there is a sequence of notes:  $\text{f} \text{f} \text{f} \text{f}$ .



Presto

Handwritten musical score for the first system, measures 1-4. The score is written in treble, bass, and piano staves. The tempo is marked 'Presto'. The piano part includes a 'Pedal' marking. The music features complex chordal textures and rhythmic patterns.

Handwritten musical score for the second system, measures 5-8. The score is written in treble, bass, and piano staves. A circled measure number '13' is visible at the end of the system. The music continues with complex textures and includes a 'f' dynamic marking at the start of measure 8.

Handwritten musical score for the third system, measures 9-12. The score is written in treble, bass, and piano staves. The tempo is marked 'Prestissimo'. The music features complex textures and includes a 'f' dynamic marking at the start of measure 9.

Handwritten musical notation for the first system, measures 1-3. It features a grand staff with treble and bass clefs, a key signature of one sharp (F#), and a 3/8 time signature. The top staff contains melodic lines with slurs and ties. The middle staff contains rhythmic notation with stems and flags. The bottom staff contains a triplet of eighth notes in the first measure.

Handwritten musical notation for the second system, measures 4-6. It continues the grand staff notation from the first system. The top staff has melodic lines with slurs. The middle staff has rhythmic notation. The bottom staff is mostly blank with some faint lines.

Handwritten musical notation for the third system, measures 7-9. It features a grand staff with treble and bass clefs, a key signature of one sharp (F#), and a 3/8 time signature. The top staff has melodic lines with slurs. The middle staff has rhythmic notation. The bottom staff has rhythmic notation. The system ends with a double bar line and a circled measure number '15'.



breit (pesante)

Piano Solo

pubato: Prei

breit

(rit...)

rit

rit + dim

ruhig Allegro tempo

45

Andante

Handwritten musical score for the first system, measures 1-4. The score is written on four staves. The first staff is the treble clef, the second is the alto clef, the third is the bass clef, and the fourth is a lower bass clef. The key signature is one sharp (F#). The first measure has a circled '1' in the first staff. The second measure has a circled '4' in the third staff. The notation includes various notes, rests, and dynamic markings.

Handwritten musical score for the second system, measures 5-8. The notation continues on the same four staves as the first system. The key signature remains one sharp. The notation includes various notes, rests, and dynamic markings.

Handwritten musical score for the third system, measures 9-12. The notation continues on the same four staves. A circled '16' is written in the right margin of the first staff. The notation includes various notes, rests, and dynamic markings.

Handwritten musical score for the first system, consisting of four staves. The notation includes various accidentals (sharps, naturals, flats), slurs, and dynamic markings such as *f*. The first staff has a treble clef and a key signature of one sharp. The second and third staves have bass clefs. The fourth staff has a bass clef and a key signature of one sharp.

Handwritten musical score for the second system, consisting of four staves. The notation includes various accidentals, slurs, and dynamic markings such as *ff*. The first staff has a treble clef and a key signature of one sharp. The second and third staves have bass clefs. The fourth staff has a bass clef and a key signature of one sharp.

Handwritten musical score for the third system, consisting of four staves. The notation includes various accidentals, slurs, and dynamic markings such as *p* and *stacc.*. The first staff has a treble clef and a key signature of two flats. The second and third staves have bass clefs. The fourth staff has a bass clef and a key signature of two flats. A circled number '2' is written at the end of the fourth staff.

bewegter → steigern →

Handwritten musical score for the first system, measures 1-3. The system consists of five staves. The top staff is a grand staff (treble and bass clefs) with a key signature of two flats (B-flat and E-flat) and a 3/4 time signature. It contains a complex chordal texture with many notes. The second staff has a treble clef and contains a melodic line with accents (^) and slurs. The third staff has a bass clef and contains a melodic line with slurs. The fourth and fifth staves have a bass clef and contain rhythmic patterns with slurs. Measure 1 is filled with notes, while measures 2 and 3 are mostly empty with some slurs and markings.

Handwritten musical score for the second system, measures 4-6. The system consists of five staves. The top staff is a grand staff with a key signature of two flats and a 4/4 time signature. It contains a complex chordal texture. The second staff has a treble clef and contains a melodic line with accents (^) and slurs. The third staff has a bass clef and contains a melodic line with slurs. The fourth and fifth staves have a bass clef and contain rhythmic patterns with slurs. Measure 4 is filled with notes, while measures 5 and 6 are mostly empty with some slurs and markings.

Handwritten musical score for the third system, measures 7-9. The system consists of five staves. The top staff is a grand staff with a key signature of two flats and a 4/4 time signature. It contains a complex chordal texture. The second staff has a treble clef and contains a melodic line with accents (^) and slurs. The third staff has a bass clef and contains a melodic line with slurs. The fourth and fifth staves have a bass clef and contain rhythmic patterns with slurs. Measure 7 is filled with notes, while measures 8 and 9 are mostly empty with some slurs and markings.

18

Lento

Handwritten musical score for the first system. It includes a piano staff with notes and a violin staff with notes. Performance markings include *pp*, *pedal*, *ff*, *rubato*, and *rit - dim*. The piano part has a key signature of one sharp (F#) and a common time signature (C).

Handwritten musical score for the second system. It continues the piano and violin parts. Performance markings include *pp*, *ff*, *rubato*, and *rit - dim*. The piano part has a key signature of one sharp (F#) and a common time signature (C).

Handwritten musical score for the third system. It concludes the piano and violin parts. Performance markings include *pp*, *ff*, *rubato*, and *rit - dim*. The piano part has a key signature of one sharp (F#) and a common time signature (C). The system ends with a double bar line.

19

solo piano (Prestissimo)

2

Handwritten musical score for the first system. It consists of a grand staff with a treble clef on the top staff and a bass clef on the bottom staff. The time signature is 2/2. The music begins with a large '2' in the treble clef. The first staff contains several measures of rests. The second staff contains a melodic line with notes and accents, starting with a circled 'p'. The third staff contains a bass line with notes and rests, also starting with a circled 'p'. The system ends with a double bar line.

Handwritten musical score for the second system. It continues the grand staff notation. The first staff has a melodic line with notes and accents, starting with a circled 'p'. The second staff has a bass line with notes and rests, also starting with a circled 'p'. The system ends with a double bar line.

Handwritten musical score for the third system. It continues the grand staff notation. The first staff has a melodic line with notes and accents, starting with a circled 'p'. The second staff has a bass line with notes and rests, also starting with a circled 'p'. The system ends with a double bar line.

Handwritten musical score for the first system. It consists of a grand staff with a treble clef on the top line and a bass clef on the bottom line. The key signature is one sharp (F#). The music is written in a 4/4 time signature. The first measure has a dynamic marking of *f*. The second measure has a dynamic marking of *mf*. The score includes various note values, rests, and slurs.

Handwritten musical score for the second system. It continues the piece with a grand staff. The key signature remains one sharp (F#). The first measure has a dynamic marking of *ff*. The second measure has a dynamic marking of *ff*. The third measure has a dynamic marking of *p*. The score includes various note values, rests, and slurs.

Handwritten musical score for the third system. It continues the piece with a grand staff. The key signature remains one sharp (F#). The first measure has a dynamic marking of *ff*. The second measure has a dynamic marking of *Solo*. The third measure has a dynamic marking of *ff*. The score includes various note values, rests, and slurs. A circled measure number "21" is written in the top right corner of the system.

Handwritten musical score for the first system. It consists of a grand staff with treble and bass clefs. The piano part (top two staves) contains notes with slurs and dynamic markings. The bass line (bottom two staves) contains notes and rests. The system is divided into four measures.

22

Handwritten musical score for the second system. It consists of a grand staff with treble and bass clefs. The piano part (top two staves) contains notes and slurs. The bass line (bottom two staves) contains notes and rests. The system is divided into four measures.

Handwritten musical score for the third system. It consists of a grand staff with treble and bass clefs. The piano part (top two staves) contains notes and slurs. The bass line (bottom two staves) contains notes and rests. The system is divided into four measures.



Cresc. →

Handwritten musical score system 1. It consists of three staves. The top staff is a grand staff (treble and bass clefs) with a 4/4 time signature. The middle staff is a bass clef staff. The bottom staff is a bass clef staff. The system is divided into two measures by a vertical line. The first measure has a large slur over the top two staves. The second measure also has a large slur over the top two staves. There are various musical notations including notes, rests, and dynamic markings.

Handwritten musical score system 2. It consists of three staves. The top staff is a grand staff (treble and bass clefs). The middle staff is a bass clef staff. The bottom staff is a bass clef staff. The system is divided into two measures by a vertical line. The first measure has a large slur over the top two staves. The second measure also has a large slur over the top two staves. There are various musical notations including notes, rests, and dynamic markings.

Handwritten musical score system 3. It consists of three staves. The top staff is a grand staff (treble and bass clefs). The middle staff is a bass clef staff. The bottom staff is a bass clef staff. The system is divided into two measures by a vertical line. The first measure has a large slur over the top two staves. The second measure also has a large slur over the top two staves. There are various musical notations including notes, rests, and dynamic markings.

Handwritten musical score for system 22. The system consists of three staves. The top staff is a treble clef staff with a long melodic line spanning across measures, marked with a circled *ff*. The middle staff is a bass clef staff with notes and rests, also marked with a circled *ff*. The bottom staff is a bass clef staff with notes and rests. The system is divided into four measures.

22

Handwritten musical score for system 23. The system consists of three staves. The top staff is a treble clef staff with a long melodic line spanning across measures, marked with a circled *ff*. The middle staff is a bass clef staff with notes and rests, also marked with a circled *ff*. The bottom staff is a bass clef staff with notes and rests. The system is divided into four measures.

23

Handwritten musical score for system 24. The system consists of three staves. The top staff is mostly empty with a few notes. The middle staff is a bass clef staff with notes and rests, marked with a circled *ff*. The bottom staff is a bass clef staff with notes and rests. The system is divided into four measures.

24

Handwritten musical score system 1. It consists of five staves. The top staff has a treble clef and contains complex chordal notation with various accidentals (sharps, flats, naturals) and a circled '7th'. The second staff has a bass clef and contains a single note with a flat and an accent. The third staff has a bass clef and contains a sequence of notes with flats and an accent. The fourth and fifth staves are empty. Below the staves is a single line of musical notation with a 'Solo' marking.

Handwritten musical score system 2. It consists of five staves. The top staff has a treble clef and contains complex chordal notation with various accidentals and a circled '7th'. The second staff has a bass clef and contains a single note with a flat and an accent. The third staff has a bass clef and contains a sequence of notes with flats and an accent. The fourth and fifth staves are empty. Below the staves is a single line of musical notation.

Handwritten musical score system 3. It consists of five staves. The top staff has a treble clef and contains complex chordal notation with various accidentals and a circled '7th'. The second staff has a bass clef and contains a single note with a flat and an accent. The third staff has a bass clef and contains a sequence of notes with flats and an accent. The fourth and fifth staves are empty. Below the staves is a single line of musical notation with a 'Solo' marking and a 'dir' marking. A box with the number '52' is located at the top right of this system.

*p*

Handwritten musical score for the first system. It consists of four staves. The top staff is a treble clef with a key signature of one flat (B-flat major or D minor) and a common time signature. It contains a melodic line with notes and rests, and a dynamic marking of *p*. The second staff is a bass clef with a key signature of one flat and a common time signature, containing a bass line with notes and rests, and a *cresc.* marking. The third staff is a bass clef with a key signature of one flat and a common time signature, containing a bass line with notes and rests. The fourth staff is a bass clef with a key signature of one flat and a common time signature, containing a bass line with notes and rests.

Handwritten musical score for the second system. It consists of four staves. The top staff is a treble clef with a key signature of one flat and a common time signature, containing a melodic line with notes and rests. The second staff is a bass clef with a key signature of one flat and a common time signature, containing a bass line with notes and rests. The third staff is a bass clef with a key signature of one flat and a common time signature, containing a bass line with notes and rests. The fourth staff is a bass clef with a key signature of one flat and a common time signature, containing a bass line with notes and rests.

Handwritten musical score for the third system. It consists of four staves. The top staff is a treble clef with a key signature of one flat and a common time signature, containing a melodic line with notes and rests, and a dynamic marking of *p*. The second staff is a bass clef with a key signature of one flat and a common time signature, containing a bass line with notes and rests. The third staff is a bass clef with a key signature of one flat and a common time signature, containing a bass line with notes and rests. The fourth staff is a bass clef with a key signature of one flat and a common time signature, containing a bass line with notes and rests.



— dim —

Handwritten musical score for page 27. It consists of a piano part with four measures. The first measure is marked with a bracket and the word "dim". Below the first measure, it says "letzten 4 Takte modus". The second measure is also marked "letzten 4 Takte modus". The third measure is marked "letzten 4 Takte modus". The fourth measure is marked "letzten 4 Takte modus". There are double bar lines between the measures. Dynamic markings include "pp" in the fourth measure.

Handwritten musical score for page 27, showing a piano part with five measures. The notes are represented by stems and flags. There are dynamic markings like "pp" and "p".

Handwritten musical score for page 28. It consists of a piano part with five measures. The notes are represented by stems and flags. There are dynamic markings like "f" and "p". The page number "28" is circled in the top right corner.

Polyst  
D.C.  
al

codn

großes mit — klein —

Handwritten musical score for the first system. It consists of two staves. The top staff is in treble clef with a key signature of one flat (B-flat). It contains several measures with notes and rests, including a circled 'pp' marking. The bottom staff is in bass clef with a key signature of one flat, showing a sequence of notes. Above the staves, there are handwritten notes: 'w', 'b', 'f', and 'f' with arrows pointing to specific notes.

Handwritten musical score for the second system. It continues the piece with two staves. The notation is similar to the first system, with a treble clef and one flat key signature. It includes dynamic markings such as 'pp' and 'f'. The top staff has notes and rests, while the bottom staff shows a melodic line. Above the staves, there are handwritten notes: 'w', 'b', 'f', and 'f' with arrows pointing to notes.

