

Dunkle Stimmen -
Moderne Dichtung afrikanischer
Völker.

Musik: Adolf Scherbaum

~~1971~~

Notenheft 5 Teile



1. Mayombē - bombe - mayombe'!
Mayombē - bombe - mayombē'!
Mayombe' - bombe - mayombe'!

2. Die Schlange hat Augen aus Glas
Die Schlange erscheint und sie windet sich um den Pfahl,
mit den Augen aus Glas um den Pfahl,
mit den Augen aus Glas.
Die Schlange kriecht ohne Pfoten,
die Schlange versteckt sich im Gras,
~~kriecht ohne Pfoten, versteckt sich kriechend im Gras,~~
kriecht ohne Pfoten

3. Mayombe' - bombe - mayombe'!
" " "
" " "

4. Gibs ihr mit der Axt und sie stirbt:
gibs ihr gleich,
gibs ihr nicht mit dem Fuß, denn sie beißt,
gibs ihr nicht mit dem Fuß, daß sie weicht,

5. Sensemaya', die Schlange
Sensemaya,
Sensemaya' mit den Augen,
Sensemaya'.
Sensemaya' mit der Zunge
Sensemaya'.
Sensemaya' mit dem Maul,
Sensemaya'.

6. Die tote Schlange frißt nicht mehr,
die tote Schlange zischt nicht mehr,
kriecht nicht mehr,
läuft nicht mehr.
Die tote Schlange röhrt nicht mehr,
die tote Schlange schaut nicht mehr,
haucht nicht mehr,
beißt nicht mehr.

7. Mayombe' - bombe - mayombe'.
Sensemaya', die Schlange ...
Mayombe' - bombe - mayombe'.
Sensemaya' quibt sich nicht ...
Mayombe' - bombe - mayombe'.
Sensemaya', die Schlange ...
Mayombe' - bombe - mayombe'.
Sensemaya' IST TOT.

1

grasch

pp pp ff

ff

2

Handwritten musical notation for the first system. The treble clef staff contains a melody in a key signature of one flat (B-flat). The first two measures are slurred together. The bass clef staff contains chords and a wavy line indicating a specific rhythmic or articulation pattern.

Handwritten musical notation for the second system. The treble clef staff contains a melody in a key signature of one flat. The first two measures are slurred together. The bass clef staff contains chords, with the second measure of the second system marked with an '8'.

Handwritten musical notation for the third system. The treble clef staff contains a melody in a key signature of one sharp (F-sharp). The first two measures are slurred together. The bass clef staff contains a wavy line and a long horizontal line, possibly indicating a sustained note or a specific rhythmic pattern.

Handwritten musical notation for the fourth system. The treble clef staff contains a melody in a key signature of one flat. The first two measures are slurred together. The bass clef staff contains a wavy line and a long horizontal line, similar to the third system.

Handwritten musical notation for the first system. The upper staff is in treble clef with notes B \flat , B \flat , and B \flat , each with an accent (^). The lower staff is in bass clef with a series of notes and rests, also with accents (^).

Handwritten musical notation for the second system. The upper staff is in treble clef with notes G \sharp and G \sharp with accents (^). The lower staff is in bass clef with notes G \sharp and G \sharp with accents (^). A circled 'p' is written at the end of the system.

Cresc.

Handwritten musical notation for the third system. The upper staff starts with a circled 'p' and contains notes G \sharp and G \sharp with accents (^). The lower staff contains notes G \sharp and G \sharp with accents (^).

Handwritten musical notation for the fourth system. The upper staff contains notes G \sharp and G \sharp with accents (^). The lower staff contains notes G \sharp and G \sharp with accents (^).

Handwritten musical notation for the first system. The upper staff is in treble clef with a key signature of one flat (B-flat). It contains two measures of music with notes and rests. The lower staff is in bass clef and contains two measures of music with notes and rests. There are various annotations including a 'mf' dynamic marking, a 'p' dynamic marking, and a 'V' symbol.

Handwritten musical notation for the second system. The upper staff is in treble clef with a key signature of one flat (B-flat). It contains two measures of music with notes and rests. The lower staff is in bass clef and contains two measures of music with notes and rests. There are various annotations including a 'ff' dynamic marking and a 'V' symbol.

Handwritten musical notation for the third system. The upper staff is in treble clef with a key signature of one sharp (F#). It contains two measures of music with notes and rests. The lower staff is in bass clef and contains two measures of music with notes and rests. There are various annotations including a circled 'F#' and a 'V' symbol.

Handwritten musical notation for the fourth system. The upper staff is in treble clef with a key signature of one sharp (F#). It contains two measures of music with notes and rests. The lower staff is in bass clef and contains two measures of music with notes and rests. There are various annotations including a 'CODA' symbol and a 'V' symbol.

Handwritten musical notation for the first system. It consists of two staves. The upper staff has a treble clef, a circled key signature of three sharps (F#, C#, G#), and a circled time signature of 3/4. The lower staff has a bass clef and a circled key signature of two sharps (F#, C#). The word "Lunga" is written above the upper staff, and "pp" is written below it. A long horizontal line with a downward-pointing arrow spans across both staves, indicating a sustained or decaying sound.

Handwritten musical notation for the second system. It consists of two staves. The upper staff has a treble clef and a circled time signature of 8/8. The lower staff has a bass clef and a circled time signature of 8/8. The word "Lento (♩)" is written above the upper staff. The notation includes various notes, rests, and accidentals. The word "(nicht schleppend)" is written below the lower staff. A circled "pp" is also present.

Handwritten musical notation for the third system. It consists of two staves. The upper staff has a treble clef and a circled time signature of 8/8. The lower staff has a bass clef and a circled time signature of 8/8. The notation includes various notes, rests, and accidentals. A circled "pp" is present.

Handwritten musical notation for the fourth system. It consists of two staves. The upper staff has a treble clef and a circled time signature of 8/8. The lower staff has a bass clef and a circled time signature of 8/8. The notation includes various notes, rests, and accidentals. A circled "mf" is present.

Handwritten musical score for the first system. It consists of two staves. The upper staff is in treble clef and contains a sequence of notes: a quarter note G#4, a quarter note A4, a quarter note B4, a quarter note C5, a quarter note D5, a quarter note E5, and a quarter note F5. The lower staff is in bass clef and contains a sequence of notes: a quarter note G#3, a quarter note A3, a quarter note B3, a quarter note C4, a quarter note D4, and a quarter note E4. Dynamics include accents (>) and a piano accent (p >).

lento (d) *sehr ruhig*

Handwritten musical score for the second system. It is marked *lento* (d) and *sehr ruhig*. The time signature is 4/4. The upper staff is in treble clef and contains a sequence of notes: a quarter note G#4, a quarter note A4, a quarter note B4, a quarter note C5, a quarter note D5, a quarter note E5, a quarter note F5, a quarter note G5, a quarter note A5, a quarter note B5, a quarter note C6, a quarter note D6, a quarter note E6, and a quarter note F6. The lower staff is in bass clef and contains a sequence of notes: a quarter note G#3, a quarter note A3, a quarter note B3, a quarter note C4, a quarter note D4, a quarter note E4, a quarter note F4, a quarter note G4, a quarter note A4, a quarter note B4, a quarter note C5, a quarter note D5, a quarter note E5, a quarter note F5, a quarter note G5, a quarter note A5, a quarter note B5, a quarter note C6, a quarter note D6, a quarter note E6, and a quarter note F6. Dynamics include piano (pp) and accents (>).

Handwritten musical score for the third system. It consists of two staves. The upper staff is in treble clef and contains a sequence of notes: a quarter note G#4, a quarter note A4, a quarter note B4, a quarter note C5, a quarter note D5, a quarter note E5, a quarter note F5, a quarter note G5, a quarter note A5, a quarter note B5, a quarter note C6, a quarter note D6, a quarter note E6, and a quarter note F6. The lower staff is in bass clef and contains a sequence of notes: a quarter note G#3, a quarter note A3, a quarter note B3, a quarter note C4, a quarter note D4, a quarter note E4, a quarter note F4, a quarter note G4, a quarter note A4, a quarter note B4, a quarter note C5, a quarter note D5, a quarter note E5, a quarter note F5, a quarter note G5, a quarter note A5, a quarter note B5, a quarter note C6, a quarter note D6, a quarter note E6, and a quarter note F6. Dynamics include accents (>) and a ritardando marking (rit....).

Handwritten musical score for the fourth system. It consists of two staves. The upper staff is in treble clef and contains a sequence of notes: a quarter note G#4, a quarter note A4, a quarter note B4, a quarter note C5, a quarter note D5, a quarter note E5, a quarter note F5, a quarter note G5, a quarter note A5, a quarter note B5, a quarter note C6, a quarter note D6, a quarter note E6, and a quarter note F6. The lower staff is in bass clef and contains a sequence of notes: a quarter note G#3, a quarter note A3, a quarter note B3, a quarter note C4, a quarter note D4, a quarter note E4, a quarter note F4, a quarter note G4, a quarter note A4, a quarter note B4, a quarter note C5, a quarter note D5, a quarter note E5, a quarter note F5, a quarter note G5, a quarter note A5, a quarter note B5, a quarter note C6, a quarter note D6, a quarter note E6, and a quarter note F6. Dynamics include piano-piano-piano (ppp) and a fortissimo marking (D.C. f). A box labeled "CODA" is present at the end of the system.

♩ Coda

moderato

Handwritten musical notation for the first system. The top staff is in treble clef and contains a melodic line with slurs and accents. The bottom staff is in bass clef and contains chords and a double bar line.

Handwritten musical notation for the second system. The top staff is in treble clef and contains a melodic line with slurs and accents. The bottom staff is in bass clef and contains chords and a double bar line.

Handwritten musical notation for the third system. The top staff is in treble clef and contains a melodic line with slurs and accents. The bottom staff is in bass clef and contains chords and a double bar line.

Gliss

Pedal

② (Kolumbien)

Candelario Obeso

✶

Die Nacht, wie ist sie traurig -
so traurig war sie nie -
da steht kein Stern am Himmel -
Ach zieh! - Ach zieh!

Die Schwärze meiner Seele
ich schwitz mich ab für sie
und kämpfte mit dem Meere
Und sie - - - und sie?

Vielleicht denkt sie mit Schmerzen
an mich hier auf der See
vielleicht hat sie vergessen
O weh! - - - O weh!

Die Frauen sind wie alles
auf dieser krummen Welt -
mit Kunst fängt man die Fische
Für Geld! - - - für Geld

Mit Kunst schlägt man das Eisen,
mit Kunst ein böses Weib.

Das Leben ist voll Sorgen -
Was bleibt? - - - was bleibt - - ?

Die Nacht,
wie ist sie 'dunkel,
so dunkel war sie nie -

2

das Leben ist voll Sorgen,
Ich zieh ! ... Ich zieh.

largo (Funebre) ♩

ppp

sempre over...

Adolf Scherbaum (H)

The first system of the handwritten musical score consists of three staves. The top staff contains a series of chords, some with accents and slurs, and a melodic line with a slur. The middle staff features a similar chordal structure with some accidentals. The bottom staff has a melodic line with slurs and accents. The system is divided into two measures by a vertical bar line.

The second system of the handwritten musical score also consists of three staves. The notation continues from the first system, with similar chordal and melodic structures. The system is divided into two measures by a vertical bar line.

(Zeit...)

Handwritten musical score for three staves. The top staff has a treble clef and a key signature of one sharp (F#). The middle staff has a treble clef and a key signature of two sharps (F#, C#). The bottom staff has a bass clef. The music consists of chords and melodic lines with various dynamics and articulations.

sempre din + rit.....

Handwritten musical score for two staves. The top staff has a treble clef and a key signature of one flat (Bb). The bottom staff has a bass clef. The music features melodic lines and chords with dynamic markings like "ff" and "fff".

Handwritten musical score for two staves. The top staff has a treble clef and a key signature of one flat (Bb). The bottom staff has a bass clef. The music features melodic lines and chords with dynamic markings like "ff" and "f".

Handwritten musical notation for the first system. The vocal line features a circled word "dün" above a melodic phrase. The piano accompaniment consists of two staves with complex chordal textures and fingerings. A dynamic marking of *mf* is present.

Handwritten musical notation for the second system. The vocal line includes a circled *pp* marking and a melodic phrase. The piano accompaniment continues with dense chordal patterns. A dynamic marking of *pp* is also present.

großes rit-----dün-----

Handwritten musical notation for the third system. The vocal line shows a melodic phrase with a circled *ppp* marking. The piano accompaniment features a series of chords with some slanted lines indicating a sustained or tremolo effect.

Handwritten musical notation for the fourth system. The vocal line includes a circled *ppp* marking and the word "lunga" written below the notes. The piano accompaniment ends with a large, decorative flourish. A circled *ppp* marking is also present.

③ Antillen (Kuba)

Nicola's Guillen

Neger —

in den Zuckerrohrfeldern —

Weisse —

über den Zuckerrohrfeldern —

Erde —

unter den Zuckerrohrfeldern —

Blut —

das aus UNS Fließt. —

[3]

ganzige $\frac{8}{8}$ (frei)

leuto

p

Ped.

frei

leuto

frei

(leuto)

f

leuto

mf

COPA

Allegro Vivo (sehr energ.)

Handwritten musical notation for the first system. The treble clef staff contains a melody starting with a circled **fff** dynamic marking. Above the notes are accents and slurs. The bass clef staff contains chords with accents. The word **hart** is written below the first chord. The system concludes with a double bar line and a repeat sign.

Handwritten musical notation for the second system. The treble clef staff continues the melody with accents and slurs. The bass clef staff contains chords with accents. The system concludes with a double bar line and a repeat sign.

Handwritten musical notation for the third system. The treble clef staff continues the melody with accents and slurs. The bass clef staff contains chords with accents. The system concludes with a double bar line and a repeat sign.

mm m mmmmm

Handwritten musical notation for the first system. The top staff is in treble clef and contains a melodic line with various ornaments and slurs. The bottom staff is in bass clef and contains a cluster of notes, with a small circle around the first note.

Handwritten musical notation for the second system. The top staff is in treble clef and contains a melodic line. The bottom staff is in bass clef and contains a cluster of notes. A circled treble clef is on the left. Below the staves, the text "tiefen clustern" is written in a box, followed by three empty rectangular boxes.

Handwritten musical notation for the third system. The top staff is in treble clef and contains a melodic line. The bottom staff is in bass clef and contains a cluster of notes. The word "Pedal" is written on the left. Below the staves, the text "Block (A)" is written in a box, followed by a large bracket.

Handwritten musical notation for the fourth system. The top staff is in treble clef and contains a melodic line. The bottom staff is in bass clef and contains a cluster of notes. The text "Block (A)" is written in a box, followed by another "Block (A)" and a third "Block (A)" which is scribbled out. Below the staves, the text "Block (A)" is written in a box, followed by a large bracket.

Tempo overc.

Handwritten musical notation for the first system. It features a treble clef, a key signature of two sharps (F# and C#), and a dynamic marking of 'pp'. The notation includes a melodic line with quarter notes and a bass line with chords. A double bar line is present after the first measure.

Handwritten musical notation for the second system. It continues the piece with a treble clef and a key signature of two sharps. It shows a melodic line and a bass line with chords.

Handwritten musical notation for the third system. It features a treble clef, a key signature of two sharps, and a dynamic marking of 'mf'. The notation includes a melodic line and a bass line with chords.



Handwritten musical notation on a grand staff. The right hand has a circled 'F' and a circled 'F#'. The left hand has a circled 'F#'. There are various notes and accidentals, including sharps and naturals.

Handwritten musical notation on a grand staff. The right hand has a circled 'F#'. The left hand has a circled 'F#'. There are notes and accidentals, including a flat and a sharp. The text "wie flocken (Pedal tiefe Cluster)" is written below the left hand.

Handwritten musical notation on a grand staff. The right hand has a circled 'F#'. The left hand has a circled 'F#'. There are notes and accidentals, including a flat and a sharp.

Handwritten musical notation on a grand staff. The right hand has a circled 'F#'. The left hand has a circled 'F#'. There are notes and accidentals, including a flat and a sharp.

dal
ohne
dann
weiter

(X) (X) verklingen lassen
 cluster (sehr eng + tief) folgt D.C. al.
CODA

(X) Cresc.
 (X) longa
 Pedal ppp

(X) longa
 (X) ppp

④

Afrika - Liberia -

Bay T. Moore

Ganz fern von stampfenden Sangbas

hör ich ein Dschungellied

Der Sänger scheint zu sagen:

in rhythmischem Schritt und Grazie und Zauber

tanzen die Jungfrauen

mit hüpfenden Brüsten

und schwarze Burden mit kräftigen Körpern

brechen los, eine Dschungelliebe

ihre eigen zu nennen.

(4)

ruhig

Handwritten musical notation for the first system. It consists of two staves. The top staff is in treble clef with a 3/4 time signature and a circled 'P' dynamic marking. The bottom staff is in bass clef. The music features a melody with a slur over the first two measures and a fermata over the second measure. The bass line has chords with accidentals and a fermata over the second measure.

(1)

Handwritten musical notation for the second system. It consists of two staves. The top staff is in treble clef and the bottom staff is in bass clef. The music continues with a melody and bass line, featuring slurs and a fermata over the second measure in the top staff.

Handwritten musical notation for the third system. It consists of two staves. The top staff is in treble clef and the bottom staff is in bass clef. The music continues with a melody and bass line, featuring slurs and a fermata over the second measure in the top staff.

(rit-----)

~~etwas bewegt~~ (etwas bewegt) *etwas bewegter* *appassionata* ...

Handwritten musical notation on two staves. The top staff has the word "gut..." written above it. The notation includes notes with accidentals (flats and naturals), stems, and beams. There are also some markings like a triangle (^) and a squiggle (~).

Handwritten musical notation on two staves. The top staff has the word "gut..." circled above it. The notation includes notes with accidentals, stems, and beams. There are also some markings like a triangle (^) and a squiggle (~).

Handwritten musical notation on two staves. The top staff has the word "sehr langsam" written above it. The notation includes notes with accidentals (sharps and naturals), stems, and beams. There are also some markings like a triangle (^) and a squiggle (~). The word "Pedal" is written below the bottom staff. On the right side, there is a vertical line with the text "Kleine G.P.s" next to it.

Handwritten musical notation on two staves. The top staff has the word "Tempo" written above it. The notation includes notes with accidentals, stems, and beams. There are also some markings like a triangle (^) and a squiggle (~).

Handwritten musical notation on two staves. The top staff is in treble clef and the bottom in bass clef. The music consists of several measures with various notes, accidentals (sharps and flats), and slurs. A dynamic marking '#p.' is present in the second measure of the bottom staff.

(gut + drei)

Handwritten musical notation on two staves. The top staff is in treble clef and the bottom in bass clef. The music features complex rhythmic patterns and accidentals. Dynamic markings include '>' and '#p.'.

Handwritten musical notation on two staves. The top staff is in treble clef and the bottom in bass clef. The music is characterized by sustained notes and slurs. Dynamic markings include 'fp', '>', and 'pp'. A circled 'P' is written below the first measure of the bottom staff. The word 'gut' is written below the staves with dashed lines.

Handwritten musical notation on two staves. The top staff is in treble clef and the bottom in bass clef. The music includes a dynamic marking 'ppp' and a circled 'P'. The notation ends with a large blue flourish.

Der Weiße hat meinen Vater getötet, —

mein Vater war stolz,

Der Weiße hat meine Mutter geschändet, —

meine Mutter war schön —

Der Weiße hat meinen Bruder unter die Sonne der Straßen

gekümmert —

mein Bruder war stark,

Der Weiße hat seine getöteten Hände,

getötet von schwarzem Blut —

mir zugewandt —

mit Herrenstimme: "He Boy! Einen Kuaben, ein
Handtuch und Wasser!"



rasch bewegt (Sempre vivo. —

Handwritten musical score system 1. It consists of two staves. The upper staff is in treble clef and contains three measures of music with notes and rests, marked with accents (^) and a circled **ff** dynamic marking. The lower staff is in bass clef and contains corresponding chords and notes for the first three measures. A double bar line is present after the third measure.

Handwritten musical score system 2. It consists of two staves. The upper staff is in treble clef and contains three measures of music with notes and rests, marked with accents (^). The lower staff is in bass clef and contains corresponding chords and notes for the first three measures. A double bar line is present after the third measure.

Handwritten musical score system 3. It consists of two staves. The upper staff is in treble clef and contains three measures of music with notes and rests, marked with accents (^). The lower staff is in bass clef and contains corresponding chords and notes for the first three measures. A double bar line is present after the third measure.

Handwritten musical score system 4. It consists of two staves. The upper staff is in treble clef and contains three measures of music with notes and rests, marked with accents (^) and a circled **ff** dynamic marking. The lower staff is in bass clef and contains corresponding chords and notes for the first three measures. A double bar line is present after the third measure.

Handwritten musical notation for the first system. It begins with a treble clef and a circled key signature of two sharps (F# and C#). The notation includes several chords with accents (^) and a melodic line with notes and slurs. The system concludes with a double bar line.

Handwritten musical notation for the second system. It starts with a treble clef and contains complex chordal structures with various accidentals (sharps, flats) and accents (^). The notation is dense and includes slurs and ties.

Handwritten musical notation for the third system. It continues with a treble clef and complex chordal structures, including various accidentals and accents (^). The notation is dense and includes slurs and ties.

Handwritten musical notation for the fourth system. It continues with a treble clef and complex chordal structures, including various accidentals and accents (^). The notation is dense and includes slurs and ties.

Handwritten musical notation for the fifth system. It continues with a treble clef and complex chordal structures, including various accidentals and accents (^). The notation is dense and includes slurs and ties.

Handwritten musical score for the first system. The top staff is in treble clef and contains a melodic line with eighth and quarter notes, some with accents (^). The bottom staff is in bass clef and contains a bass line with quarter notes and chords. A dynamic marking **p** (piano) is present in the first measure of the bass staff. The system concludes with a double bar line.

Handwritten musical score for the second system. The top staff is in treble clef and contains a melodic line with eighth notes and accents (^). The bottom staff is in bass clef and contains a bass line with chords. A dynamic marking **f** (forte) is present in the first measure of the bass staff. The system concludes with a double bar line.

Handwritten musical score for the third system. The top staff is in treble clef and contains a melodic line with eighth notes and accents (^). The bottom staff is in bass clef and contains a bass line with chords. A dynamic marking **ff** (fortissimo) is present in the first measure of the bass staff. The system concludes with a double bar line.

1.

p pp

D.C.
mit //:

2. *meno*

8 $\#0$

große Steigerung (accel.)

(wesentlich ruhiger)

p

8 $\#0$ → accel.

p

Prestissimo

8 $\#0$

Guss

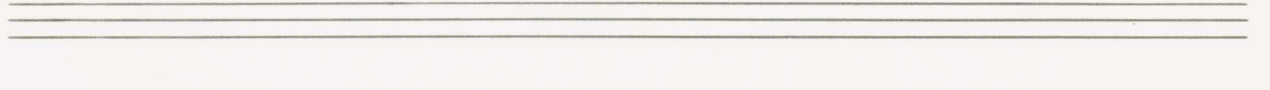
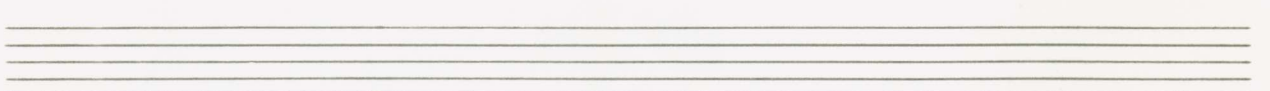
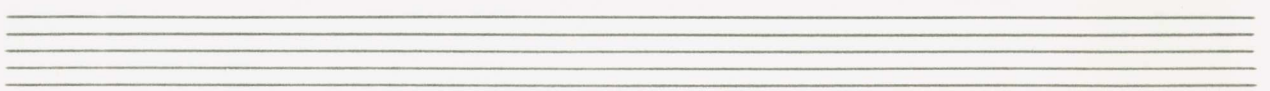
Pedal

Pedal aus

p



largo.



Handwritten musical score for the first system. It consists of two staves. The upper staff is in treble clef and contains a melodic line with several notes, some marked with accents (^). The lower staff is in bass clef and contains a bass line with notes and rests. The system concludes with a double bar line and a fermata over the final note.

(etwas bewegter)

Handwritten musical score for the second system. It consists of two staves. The upper staff is in treble clef and begins with a forte (ff) dynamic marking. The lower staff is in bass clef and contains a bass line with notes and rests. The system concludes with a double bar line.

Handwritten musical score for the third system. It consists of two staves. The upper staff is in treble clef and continues the melodic line. The lower staff is in bass clef and continues the bass line. The system concludes with a double bar line.

(2. te x dünn)

(2. + D.C. al ϕ)

ϕ

Five

Ruden Lied

(Candelario Obeso)

frei (ruhig)

1. Nacht so traurig

Nacht so traurig

2. Schwärze meiner Seele

Schwärze meiner Seele

Nacht so traurig

war sie noch nie

Schwärze meiner Seele

ich schwitz mich ab

da steht kein Stern

kein Stern am Himmel

Schwärze meiner Seele

ich schwitzt mich ab

da steht Kein Stern Stern am Himmel

ab für sie ab für sie

breit, ach zieh ach zieh

und kämpfe mit dem Meere

ach zieh ach zieh

und sie und sie

(frei) (2. x 77)

vielleicht den — ht sie mit Schmerzen
 mit Kunst schlägt man dieses Eisen
 cresc.

5.

an mi — ch auf der See
 mit Kunst — ein böses cresc. Weib
 (steigern)

vielleicht ha — t sie ver — gessen
 das Leben — ist voller Sorgen

poco rit

breit

die Frauen sind wie
ste sind wie ^{gut} alles

was bleibt
was bleibt

Tempo 1.

auf dieser Krümmen
auf dieser Welt

was bleibt
was bleibt

p *up*

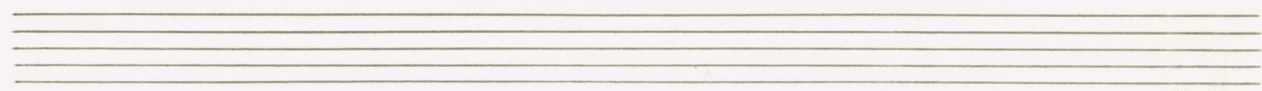
p.c. al
(für Strophe 1)
dann auf $\#$ *cod*

(2te *rit*)

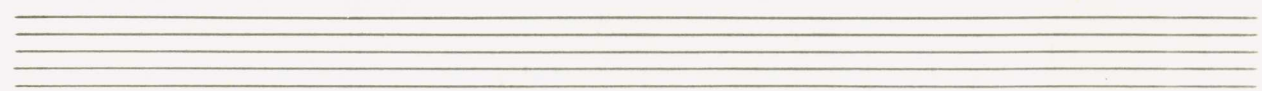
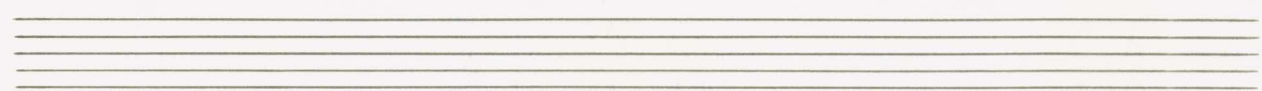
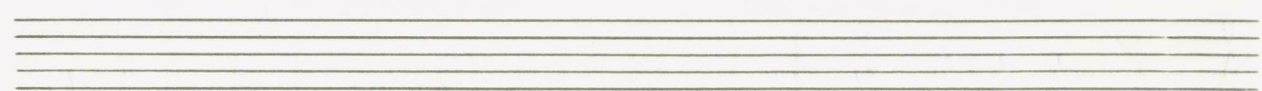
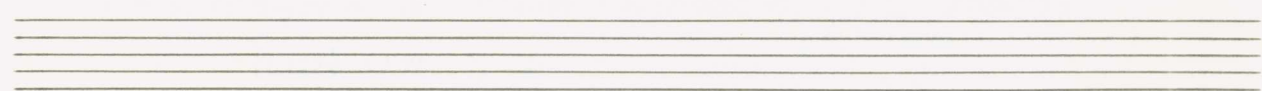


CODA (git + drum)

Handwritten musical notation for guitar and drums. The notation includes a treble clef with a key signature of two sharps (F# and C#) and a common time signature (C). The guitar part features a series of chords and melodic lines with accents (^) and a dynamic marking of *p*. The drum part includes a bass drum line with a dynamic marking of *pp*. The piece concludes with a double bar line.



Handwritten musical notation for guitar and drums. The notation includes a treble clef with a key signature of two sharps (F# and C#) and a common time signature (C). The guitar part features a series of chords and melodic lines with accents (^) and a dynamic marking of *p*. The drum part includes a bass drum line with a dynamic marking of *p*. The piece concludes with a double bar line and the word "Fine" written above the staff.



41