

Jazz Album

1971

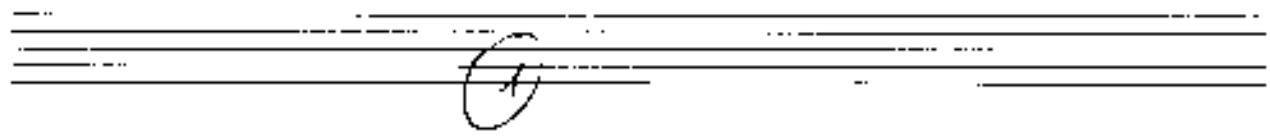
A. Scherbaum

Notenheft

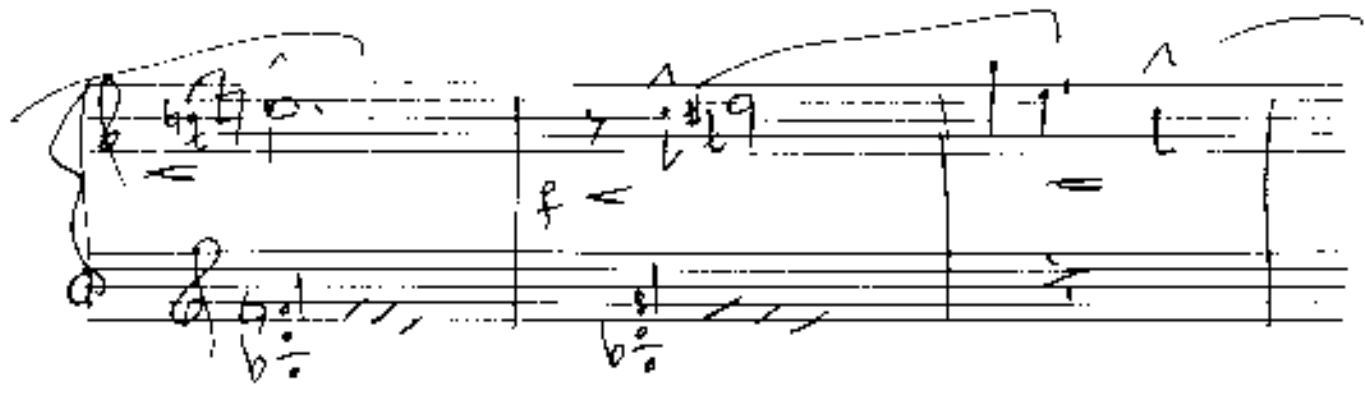
Jerry Hirsch
for Piano

71

Schubert



slow



Handwritten musical notation for the first system. The treble staff contains a melodic line with notes, rests, and accidentals (sharps and flats). The bass staff contains a bass line with notes and rests. A slur is present over the first two measures of the treble staff.

Handwritten musical notation for the second system. The treble staff contains a melodic line with notes, rests, and accidentals. The bass staff contains a bass line with notes and rests. A slur is present over the first two measures of the treble staff.

Handwritten musical notation for the third system. The treble staff contains a melodic line with notes, rests, and accidentals. The bass staff contains a bass line with notes and rests. A slur is present over the first two measures of the treble staff.

(poco rit)

Handwritten musical notation for the fourth system. The treble staff contains a melodic line with notes, rests, and accidentals. The bass staff contains a bass line with notes and rests. A slur is present over the first two measures of the treble staff.

Ped =

trailing

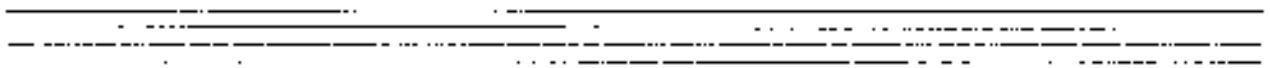
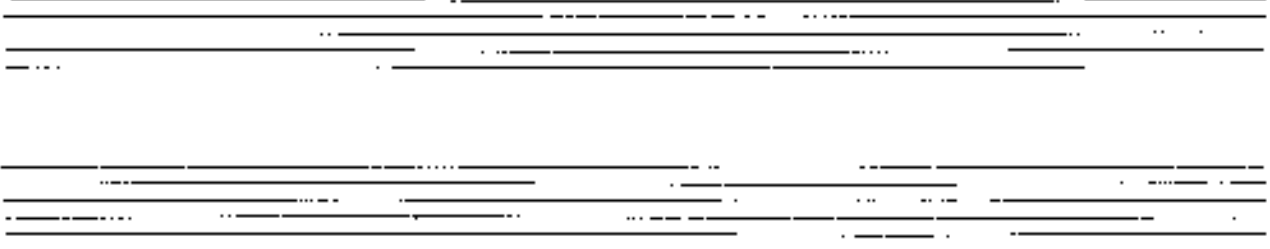
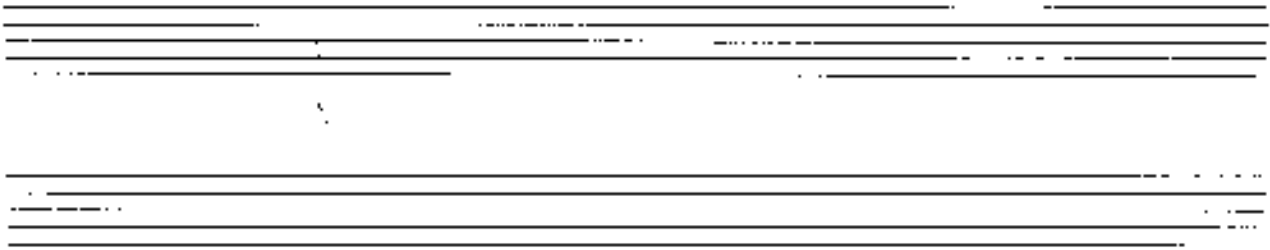
Handwritten musical notation for the first system. It consists of two staves: a treble clef staff and a bass clef staff. The time signature is 4/4. The music begins with a treble clef staff containing a quarter note G4, followed by a half note A4, and then a quarter note B4. A slur covers the next two measures: the first has a quarter note C5, and the second has a quarter note D5. The bass clef staff starts with a quarter note G3, followed by a half note F3, and then a quarter note E3. A slur covers the next two measures: the first has a quarter note D3, and the second has a quarter note C3. There are additional notes and rests throughout the system, including a circled 'P' in the first measure of the treble staff.

Handwritten musical notation for the second system. It consists of two staves: a treble clef staff and a bass clef staff. The time signature is 4/4. The treble clef staff starts with a quarter note G4, followed by a half note A4, and then a quarter note B4. A slur covers the next two measures: the first has a quarter note C5, and the second has a quarter note D5. The bass clef staff starts with a quarter note G3, followed by a half note F3, and then a quarter note E3. A slur covers the next two measures: the first has a quarter note D3, and the second has a quarter note C3. There are additional notes and rests throughout the system, including a circled 'P' in the first measure of the treble staff.

Handwritten musical notation for the third system. It consists of two staves: a treble clef staff and a bass clef staff. The time signature is 4/4. The treble clef staff starts with a quarter note G4, followed by a half note A4, and then a quarter note B4. A slur covers the next two measures: the first has a quarter note C5, and the second has a quarter note D5. The bass clef staff starts with a quarter note G3, followed by a half note F3, and then a quarter note E3. A slur covers the next two measures: the first has a quarter note D3, and the second has a quarter note C3. There are additional notes and rests throughout the system, including a circled 'P' in the first measure of the treble staff.



Handwritten musical notation on a grand staff. The notation includes a treble clef with a circled 'Viv' marking, a bass clef with 'Pia.' written below it, and a series of notes with accidentals (sharps and naturals) and slurs. A large, faint handwritten '6' is visible in the background of the staff.



2

zweit. Mod.

Handwritten musical notation for the first system. It features a treble clef and a 3/4 time signature. The key signature has one sharp (F#). The notation includes a treble staff with a whole note chord and a bass staff with a triplet of eighth notes. A fermata is placed over the first measure.

Handwritten musical notation for the second system. It features a treble clef and a key signature of one sharp. The notation includes a treble staff with a whole note chord and a bass staff with a triplet of eighth notes. A fermata is placed over the first measure.

Handwritten musical notation for the third system. It features a treble clef and a key signature of one sharp. The notation includes a treble staff with a whole note chord and a bass staff with a triplet of eighth notes. A fermata is placed over the first measure.

Handwritten musical notation for the first system. The top staff is in treble clef and contains several chords and a melodic line with a slur. The bottom staff is in bass clef and contains chords with a '3' below them, indicating a triplet.

Handwritten musical notation for the second system. The top staff is in treble clef and contains a chord with a sharp sign, a slur, and a melodic line with an accent mark. The bottom staff is in bass clef and contains chords with a '3' below them, indicating a triplet.

Handwritten musical notation for the third system. The top staff is in treble clef and contains a melodic line with a slur and a triplet of chords. The bottom staff is in bass clef and contains chords with a '3' below them, indicating a triplet.

Handwritten musical notation for the fourth system. The top staff is in treble clef and contains chords with a 'rit' marking and a slur. The bottom staff is in bass clef and contains chords with a '3' below them, indicating a triplet.

sehr breit

sub ending rit

Handwritten musical notation for the first system. The treble staff contains a melodic line with notes G4, A4, B4, C5, B4, A4, G4, and F4. The bass staff contains a bass line with notes G3, F3, E3, D3, C3, and B2. Dynamic markings include 'pp' and 'rit'. There are also some handwritten annotations like '3' and '4' above the notes.

Handwritten musical notation for the second system. The treble staff continues the melodic line with notes G4, A4, B4, C5, B4, A4, G4, and F4. The bass staff continues the bass line with notes G3, F3, E3, D3, C3, and B2. There are various note values and rests, and some handwritten annotations like '1' and '2' above the notes.

Handwritten musical notation for the third system. The treble staff contains a melodic line with notes G4, A4, B4, C5, B4, A4, G4, and F4. The bass staff contains a bass line with notes G3, F3, E3, D3, C3, and B2. Dynamic markings include 'pp'. There are also some handwritten annotations like 'b' and '1' above the notes.

Handwritten musical notation for the fourth system. The treble staff contains a melodic line with notes G4, A4, B4, C5, B4, A4, G4, and F4. The bass staff contains a bass line with notes G3, F3, E3, D3, C3, and B2. The system concludes with a 'D.C.' marking. There are also some handwritten annotations like 'm' and '1' above the notes.

Tempo 1

Handwritten musical notation for the first system. The treble clef staff contains a circled 'H' and a '3' above a quarter note. The bass clef staff contains a '3' above a quarter note. The system includes several chords and triplets, with some notes marked with accents (^).

Handwritten musical notation for the second system. The treble clef staff features a circled 'H' and a '3' above a quarter note. The bass clef staff contains a '3' above a quarter note. The system includes several chords and triplets, with some notes marked with accents (^).

Handwritten musical notation for the third system. The treble clef staff contains a circled 'H' and a '3' above a quarter note. The bass clef staff contains a '3' above a quarter note. The system includes several chords and triplets, with some notes marked with accents (^).

Handwritten musical notation for the first system. The treble clef staff begins with a sharp sign (#) and contains a whole note chord. The bass clef staff contains a whole note chord followed by two measures of triplets, each marked with a '3'.

Handwritten musical notation for the second system. The treble clef staff contains a whole note chord, a quarter note, and a triplet of eighth notes. The bass clef staff contains a triplet of eighth notes, followed by two measures of triplets with various accidentals (flats and sharps).

Handwritten musical notation for the third system. The treble clef staff has a circled word 'out' written above it, followed by a whole note chord. The bass clef staff contains a whole note chord, a double bar line, and a final flourish. The word 'out' is also written vertically above the bass clef staff.

Mod.

3

Handwritten musical notation for the first system. It features a treble clef and a circled 'f' dynamic marking. Above the staff, there is a circled '3'. The music consists of two staves with notes and rests.

Handwritten musical notation for the second system. It features a treble clef and a circled 'p' dynamic marking. Above the staff, there is a circled '3'. The music consists of two staves with notes and rests.

Handwritten musical notation for the third system. It features a treble clef and a circled '3' above the staff. The music consists of two staves with notes and rests.

Handwritten musical notation for the fourth system. It features a treble clef and a circled '3' above the staff. The music consists of two staves with notes and rests.

Handwritten musical notation for the first system. The treble clef staff contains a melodic line with notes and rests, marked with a forte **f** dynamic and a *poco rit* (rhythm) marking. The bass clef staff contains a bass line with notes and rests. The system concludes with a double bar line.

Handwritten musical notation for the second system. The treble clef staff contains a melodic line with notes and rests. The bass clef staff contains a bass line with notes and rests. The system concludes with a double bar line.

Handwritten musical notation for the third system. The treble clef staff contains a melodic line with notes and rests. The bass clef staff contains a bass line with notes and rests. The system concludes with a double bar line.

Handwritten musical notation for the fourth system. The treble clef staff contains a melodic line with notes and rests, marked with a *poco rit* (rhythm) instruction. The bass clef staff contains a bass line with notes and rests. The system concludes with a double bar line.

tempo (stwas gupiga)

Handwritten musical notation, first system. It consists of two staves. The upper staff has a treble clef and a key signature of one flat (B-flat). The lower staff has a bass clef. The first measure contains a triplet of chords: C major (C-E-G), D minor (D-F-A), and E minor (E-G-B). The second measure contains a single chord, F major (F-A-C). There are some scribbles and a slash in the second measure of both staves.

Handwritten musical notation, second system. It consists of two staves. The upper staff has a treble clef and a key signature of one flat. The lower staff has a bass clef. The first measure contains a triplet of chords: G major (G-B-D), F major (F-A-C), and E minor (E-G-B). The second measure contains a single chord, D minor (D-F-A). There are some scribbles and a slash in the second measure of both staves.

Handwritten musical notation, third system. It consists of two staves. The upper staff has a treble clef and a key signature of one flat. The lower staff has a bass clef. The first measure contains a triplet of chords: D minor (D-F-A), C major (C-E-G), and B-flat major (B-flat-D-F). The second measure contains a single chord, A minor (A-C-E). The word "din" is written in the left margin with an arrow pointing to the first measure. There are some scribbles and a slash in the second measure of both staves.

(26 + 4 + rest...)

Handwritten musical notation, fourth system. It consists of two staves. The upper staff has a treble clef and a key signature of one flat. The lower staff has a bass clef. The first measure contains a complex melodic line with many notes and accidentals. The second measure contains a single chord, D minor (D-F-A). There are some scribbles and a slash in the second measure of both staves.

coda (Tempo ①)

quasi sul tasto

4

guitar (free)

Handwritten musical notation for guitar, first system. It shows a treble and bass clef staff with notes, accidentals, and dynamic markings like 'p' and 'f'.

Handwritten musical notation for guitar, second system. It continues the piece with various notes, accidentals, and dynamic markings.

Handwritten musical notation for guitar, third system. It shows the final part of the piece with notes, accidentals, and dynamic markings.

Handwritten musical score for the first system. The treble clef staff contains a melodic line with slurs and accents. The bass clef staff provides accompaniment with a circled *f* dynamic marking.

Handwritten musical score for the second system. The treble clef staff features chords, and the bass clef staff has a few notes. The system includes the dynamic marking *ff* and the instruction *acc.* with an arrow pointing right.

Handwritten musical score for the third system. The treble clef staff contains chords, and the bass clef staff has notes. A handwritten note *(Zweitakt)* is written above the treble staff.

Handwritten musical score for the fourth system, enclosed in a large hand-drawn frame. The treble clef staff contains notes and chords, and the bass clef staff has notes. The instruction *breit (dintr.)* is written at the beginning.

2. (dinst rit)

Five

wesentlich bewegter

accel.

Handwritten musical score, first system. The word "Suet" is written above the first measure. The notation includes a treble clef, a key signature of one flat, and a common time signature. The music features a melody in the right hand and a bass line in the left hand, with various notes, rests, and dynamic markings.

Handwritten musical score, second system. The notation continues from the first system, showing a continuation of the melody and bass line with some complex chordal textures.

Handwritten musical score, third system. The notation continues, featuring a series of chords in the right hand and a corresponding bass line.

Handwritten musical score, fourth system. The word "poco rit" is written above the first measure, and "brist" is written above the second measure. The notation includes a treble clef, a key signature of one flat, and a common time signature. The music features a melody in the right hand and a bass line in the left hand, with various notes, rests, and dynamic markings.

Handwritten musical notation for the first system. The treble clef part begins with a whole note chord of B-flat major (B-flat, D, F) and continues with a sequence of chords: B-flat major, A-flat major, G-flat major, and F major. The bass clef part starts with a whole note chord of B-flat major (B-flat, D-flat, F) and continues with a sequence of chords: B-flat major, A-flat major, G-flat major, and F major. The system concludes with a double bar line.

ins tempo gehen

Handwritten musical notation for the second system. The treble clef part starts with a whole note chord of B-flat major (B-flat, D, F) and continues with a sequence of chords: B-flat major, A-flat major, G-flat major, and F major. The bass clef part starts with a whole note chord of B-flat major (B-flat, D-flat, F) and continues with a sequence of chords: B-flat major, A-flat major, G-flat major, and F major. The system concludes with a double bar line.

Handwritten musical notation for the third system. The treble clef part starts with a whole note chord of B-flat major (B-flat, D, F) and continues with a sequence of chords: B-flat major, A-flat major, G-flat major, and F major. The bass clef part starts with a whole note chord of B-flat major (B-flat, D-flat, F) and continues with a sequence of chords: B-flat major, A-flat major, G-flat major, and F major. The system concludes with a double bar line.

frei *ruhig*

mit toller

ad Fine

5

Mod.

Handwritten musical notation on a grand staff. The right hand part features a melodic line with slurs and accents, ending with a triplet of eighth notes. The left hand part consists of a bass line with chords and a long, low note at the end of the second measure.

Handwritten musical notation on a grand staff, heavily crossed out with multiple diagonal lines, indicating it is a rejected or discarded version of the piece.

Handwritten musical notation on a grand staff. The right hand part has a melodic line with a triplet of eighth notes. The left hand part has a bass line with chords and a long, low note at the end of the second measure.

Handwritten musical notation on a grand staff, enclosed in a hand-drawn frame. The right hand part has a melodic line with a triplet of eighth notes and a final measure with a sharp sign. The left hand part has a bass line with chords and a long, low note at the end of the second measure. The number "25" is written at the bottom center.

Handwritten musical notation on a grand staff. The treble clef staff contains a circled key signature of one sharp (F#) and a melodic line with slurs and accents. The bass clef staff contains a bass line with slurs and plus signs below the notes.

Handwritten musical notation on a grand staff. The treble clef staff continues the melodic line with slurs and accents. The bass clef staff has a long slur and a '3' below it.

Handwritten musical notation on a grand staff. The treble clef staff continues the melodic line with slurs and accents. The bass clef staff has a long slur and plus signs below the notes.

Handwritten musical notation on a grand staff. The treble clef staff continues the melodic line with slurs and accents. The bass clef staff has a long slur and plus signs below the notes. A page number '20' is written at the bottom right.

Handwritten musical notation for the first system. The system consists of two staves. The upper staff is in treble clef and contains a melodic line with a slur over the first two measures and a triplet in the second measure. The lower staff is in bass clef and contains a bass line with a slur over the first two measures. The key signature has one sharp (F#).

Handwritten musical notation for the second system. The system consists of two staves. The upper staff is in treble clef and contains a melodic line with a slur over the first two measures and a triplet in the second measure. The lower staff is in bass clef and contains a bass line with a slur over the first two measures. The key signature has one sharp (F#).

Handwritten musical notation for the third system. The system consists of two staves. The upper staff is in treble clef and contains a melodic line with a slur over the first two measures and a triplet in the second measure. The lower staff is in bass clef and contains a bass line with a slur over the first two measures. The key signature has one sharp (F#).

Handwritten musical notation for the first system, featuring a treble clef, a key signature of one sharp (F#), and a 3/4 time signature. The first measure contains a whole note chord with a sharp sign and a fermata. The second measure contains a whole note chord with a sharp sign and a fermata. The third measure contains a quarter note chord with a sharp sign and a fermata, followed by a double bar line. The bass staff contains a series of eighth notes with sharp signs and a fermata.

Handwritten musical notation for the second system. The first measure contains a quarter note chord with a sharp sign and a fermata, followed by a double bar line. The second measure contains a whole note chord with a sharp sign and a fermata. The third measure contains a quarter note chord with a sharp sign and a fermata, followed by a double bar line. The bass staff contains a series of eighth notes with sharp signs and a fermata.

Handwritten musical notation for the third system. The first measure contains a quarter note chord with a sharp sign and a fermata, followed by a double bar line. The second measure contains a quarter note chord with a sharp sign and a fermata, followed by a double bar line. The third measure contains a whole note chord with a sharp sign and a fermata. The bass staff contains a series of eighth notes with sharp signs and a fermata.

Handwritten musical notation for the fourth system. The first measure contains a whole note chord with a sharp sign and a fermata. The second measure contains a quarter note chord with a sharp sign and a fermata, followed by a double bar line. The third measure contains a quarter note chord with a sharp sign and a fermata, followed by a double bar line. The bass staff contains a series of eighth notes with sharp signs and a fermata.

D.C. al fine
 ||:||
 da
 rweiter

(immer schwächer werden)

Handwritten musical notation for the first system. It consists of two staves. The upper staff is in treble clef and the lower in bass clef. The key signature has one sharp (F#). The music includes eighth and sixteenth notes, some beamed together, and rests. There are some scribbles and corrections in the lower staff.

Handwritten musical notation for the second system. It consists of two staves. The upper staff is in treble clef and the lower in bass clef. The key signature has one sharp (F#). The music includes eighth and sixteenth notes, some beamed together, and rests. There are some scribbles and corrections in the lower staff.

Handwritten musical notation for the third system. It consists of two staves. The upper staff is in treble clef and the lower in bass clef. The key signature has one sharp (F#). The music includes eighth and sixteenth notes, some beamed together, and rests. There are some scribbles and corrections in the lower staff.

Handwritten musical notation for the fourth system. It consists of two staves. The upper staff is in treble clef and the lower in bass clef. The key signature has one sharp (F#). The music includes eighth and sixteenth notes, some beamed together, and rests. There are some scribbles and corrections in the lower staff.