

Jazz Album
1971

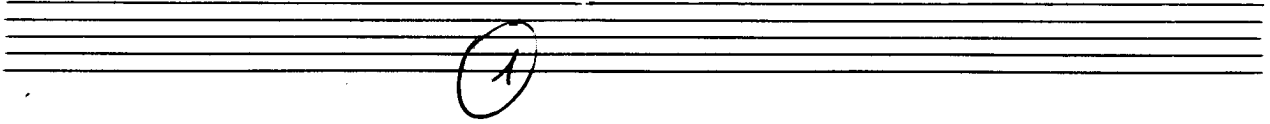
A. Scherbaum

Notenheft

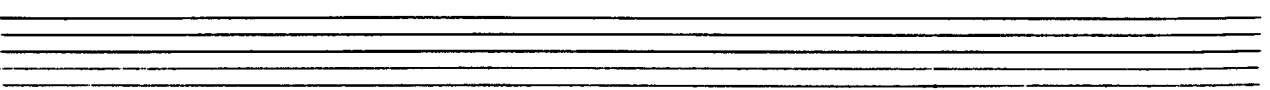
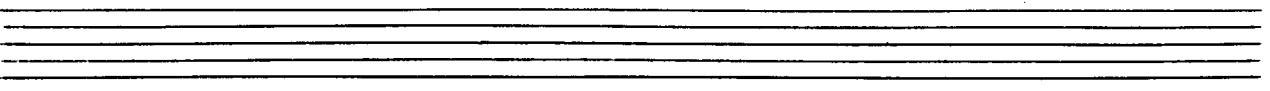
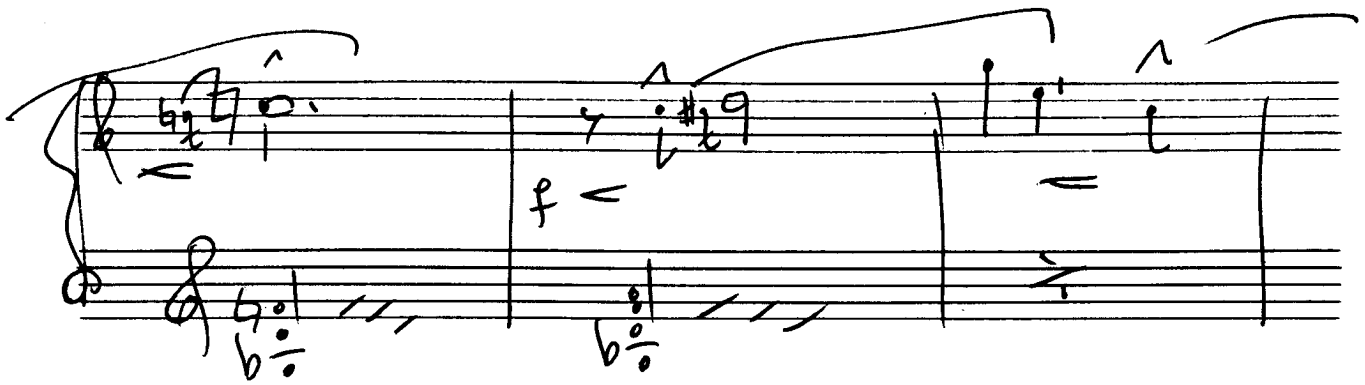
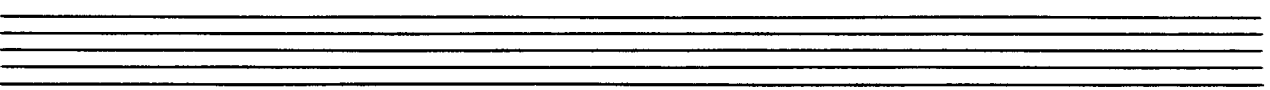
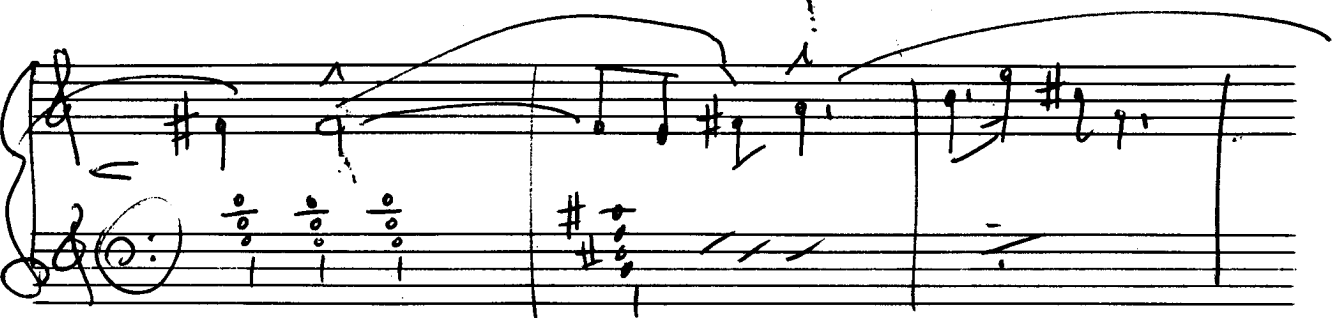
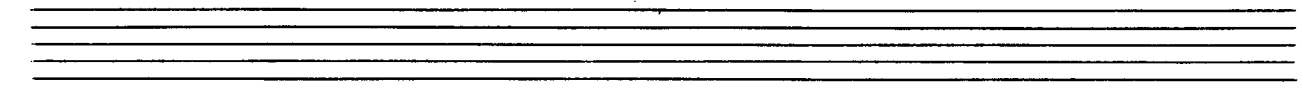
Jazz Stücke
für Piano

71

Adolf Scherbaum



slow



Handwritten musical notation for the first system. The treble staff contains a melodic line with notes and slurs, including a trill-like figure. The bass staff shows chords and rhythmic patterns. Dynamic markings include pp and mf .

Handwritten musical notation for the second system. The treble staff features complex chordal textures with many accidentals and slurs. The bass staff has chords and rests. Dynamic markings include pp .

Handwritten musical notation for the third system. The treble staff has a long melodic line with slurs and accents. The bass staff has chords and rests. Dynamic markings include mf .

(poco rit)

Handwritten musical notation for the fourth system. The treble staff has a melodic line with slurs and accents. The bass staff has chords and rests. Dynamic markings include mf .

(Ped =)

Andante

Handwritten musical notation for the first system. The treble clef staff begins with a quarter note G4, followed by a dotted quarter note A4, and a half note B4. The bass clef staff starts with a quarter note G3, followed by a dotted quarter note A3, and a half note B3. The piece is marked *Andante* and includes dynamic markings such as *p* and *mf*. The notation includes various accidentals (sharps and naturals) and phrasing slurs.

Handwritten musical notation for the second system. The treble clef staff continues with a quarter note C5, followed by a dotted quarter note D5, and a half note E5. The bass clef staff features a whole note chord in the second measure, consisting of G3, B3, and D4. The notation includes various accidentals and phrasing slurs.

Handwritten musical notation for the third system. The treble clef staff continues with a quarter note F5, followed by a dotted quarter note G5, and a half note A5. The bass clef staff features a whole note chord in the second measure, consisting of G3, B3, and D4. The notation includes various accidentals and phrasing slurs.

rit

color bright

overbouts

(rit

> rit + dir

(2. et vivit + dir

Handwritten musical score for piano. The first staff is in treble clef with a circled '1913' and a melodic line with notes, accidentals, and slurs. The second staff is in bass clef with the word 'Ped.' and a bass line with notes and slurs. The remaining eight staves are empty.

2

weit (Mod.)

Handwritten musical notation for the first system. The treble clef staff contains several chords and a melodic line with a slur. The bass clef staff contains chords with a '3' below them, indicating a triplet.

Handwritten musical notation for the second system. The treble clef staff has a slur over a melodic line. The bass clef staff features chords with a '3' below them, indicating a triplet.

Handwritten musical notation for the third system. The treble clef staff includes a slur and a triplet of notes. The bass clef staff contains chords with a '3' below them, indicating a triplet, and various accidentals.

Handwritten musical notation for the fourth system. The treble clef staff has a slur and a triplet of notes. The bass clef staff contains chords with a '3' below them, indicating a triplet.

sehr breit

stimmlos

gut... (du)

sehr ruhig *gut*

D.C.

Tempo 1

Handwritten musical notation for the first system. The top staff is in treble clef and contains several chords with accidentals (sharps) and some notes with accents. The bottom staff is in bass clef and contains chords, some with triplets indicated by a '3' and a bracket. A circled sharp sign is present in the first measure of the bass staff.

Handwritten musical notation for the second system. The top staff is in treble clef and contains chords and notes. The bottom staff is in bass clef and contains chords, some with triplets indicated by a '3' and a bracket.

Handwritten musical notation for the third system. The top staff is in treble clef and contains chords and notes. The bottom staff is in bass clef and contains chords, some with triplets indicated by a '3' and a bracket.

Handwritten musical notation for the first system. The treble clef staff contains a whole note chord marked '9' with a sharp sign (#). The bass clef staff contains a triplet of chords, each marked with a '3'.

Handwritten musical notation for the second system. The treble clef staff contains a triplet of chords, each marked with a '3'. The bass clef staff contains a triplet of chords, each marked with a '3'.

Handwritten musical notation for the third system. The treble clef staff contains a circled '9' and 'ut' above a chord. The bass clef staff contains a circled 'C' above a chord. The system concludes with a double bar line and a final chord.

Mod.

3

Handwritten musical notation for the first system. The treble clef staff contains a melodic line with notes and rests, including a slur over the first two measures and a fermata over the last note. The bass clef staff contains a harmonic accompaniment with notes and rests. Dynamic markings include *mf* and *f*. There are also some handwritten annotations above the staff, possibly indicating phrasing or articulation.

Handwritten musical notation for the second system. The treble clef staff continues the melodic line with a slur and a fermata. The bass clef staff continues the harmonic accompaniment. A circled *f* dynamic marking is present in the first measure. There are also some handwritten annotations above the staff.

Handwritten musical notation for the third system. The treble clef staff continues the melodic line with a slur and a fermata. The bass clef staff continues the harmonic accompaniment. A circled *f* dynamic marking is present in the first measure. There are also some handwritten annotations above the staff.

Handwritten musical notation for the fourth system. The treble clef staff continues the melodic line with a slur and a fermata. The bass clef staff continues the harmonic accompaniment. The instruction *(poco rit)* is written above the staff. The word *din* is written below the staff. There are also some handwritten annotations above the staff.

Tempo (etwas ruhiger)

Handwritten musical notation for the first system. It consists of two staves. The upper staff has a treble clef and contains a triplet of quarter notes with stems pointing up. The lower staff has a bass clef and contains a triplet of quarter notes with stems pointing down. There are various handwritten annotations, including a large bracket above the first staff and a checkmark-like symbol.

Handwritten musical notation for the second system. It consists of two staves. The upper staff has a treble clef and contains a triplet of quarter notes with stems pointing up. The lower staff has a bass clef and contains a triplet of quarter notes with stems pointing down. There are various handwritten annotations, including a large bracket above the first staff and a checkmark-like symbol.

Handwritten musical notation for the third system. It consists of two staves. The upper staff has a treble clef and contains a triplet of quarter notes with stems pointing up. The lower staff has a bass clef and contains a triplet of quarter notes with stems pointing down. There are various handwritten annotations, including a large bracket above the first staff, a checkmark-like symbol, and the word "din" with an arrow pointing to the right.

(26 + 4 + gut.....)

Handwritten musical notation for the fourth system. It consists of two staves. The upper staff has a treble clef and contains a complex melodic line with many notes and stems. The lower staff has a bass clef and contains a complex accompaniment line with many notes and stems. There are various handwritten annotations, including a large bracket above the first staff, a checkmark-like symbol, and a large handwritten number '11' at the end.

COPIA (Tempo ①)

Handwritten musical notation for the first system, featuring a grand staff with treble and bass clefs, a 4/4 time signature, and various notes and rests. A circled 'p' is written above the first measure of the bass line.

Handwritten musical notation for the second system, continuing the piece with similar notation and dynamics.

graves mit + olin

Handwritten musical notation for the third system, including a double bar line and a large 'X' mark in the bass line.

Handwritten musical notation for the fourth system, ending with a double bar line and a large flourish in the bass line.

4

ending (free)

Handwritten musical notation for the first system. It features a treble clef and a 4/4 time signature. The notation includes a melodic line with notes and rests, and a bass line with chords and notes. There are several accidentals (sharps and naturals) and dynamic markings like 'p' (piano) and 'f' (forte). A circled '4' is written in the bass line. A slur covers the first two measures of the treble line.

Handwritten musical notation for the second system. It features a treble clef and a 4/4 time signature. The notation includes a melodic line with notes and rests, and a bass line with chords and notes. There are several accidentals (sharps and naturals) and dynamic markings like 'f' (forte). A slur covers the first two measures of the treble line.

Handwritten musical notation for the third system. It features a treble clef and a 4/4 time signature. The notation includes a melodic line with notes and rests, and a bass line with chords and notes. There are several accidentals (sharps and naturals) and dynamic markings like 'p' (piano) and 'f' (forte). A slur covers the first two measures of the treble line.

Handwritten musical notation for the first system. The treble staff contains a melodic line with slurs and accents. The bass staff contains a harmonic accompaniment. Dynamic markings include a forte 'f' and a circled piano 'p'.

Handwritten musical notation for the second system. The treble staff features a series of chords. The bass staff has a simple accompaniment. Markings include 'ff' and 'accel.' with an arrow pointing right.

Handwritten musical notation for the third system. The treble staff contains chords. The bass staff has a simple accompaniment. The instruction '(Zurück)' is written above the treble staff.

Handwritten musical notation for the fourth system. The treble staff contains a melodic line. The bass staff has a simple accompaniment. The instruction '1. breit (dünst)' is written above the treble staff.

12. (düst. rit)

wesentlich bewegter

accel.

Handwritten musical notation for the first system. The top staff contains the word "Sweet" with a right-pointing arrow and four accents (^) above it. The music is written in treble and bass clefs, featuring chords and melodic lines with various articulations.

Handwritten musical notation for the second system. The top staff has five accents (^) above it. The notation includes chords and melodic lines in both staves, with a right-pointing arrow in the bass staff.

Handwritten musical notation for the third system. The top staff features four accents (^) above it. The notation consists of chords in the upper staff and a rhythmic pattern of eighth notes in the lower staff.

Handwritten musical notation for the fourth system. The top staff has the word "Coconut" written above it, followed by a bracket and the word "break". The notation includes chords and melodic lines with various articulations and a circled symbol in the bass staff.

Handwritten musical notation for the first system. The treble clef staff contains a series of chords: bb^{\flat} , e^{\flat} , b^{\flat} , e^{\flat} , a^{\flat} , and e^{\flat} . The bass clef staff contains a bass line starting with b^{\flat} and a^{\flat} , followed by chords b^{\flat} , b^{\flat} , a^{\flat} , and a^{\flat} . The system concludes with a double bar line and a repeat sign.

ins tempo gehen

Handwritten musical notation for the second system. The instruction *ins tempo gehen* is written above the treble clef staff. The treble clef staff begins with a dynamic marking mf and a tempo marking *cresc.*. The notation includes several chords and melodic lines with accents (^). The bass clef staff contains chords b^{\flat} , b^{\flat} , a^{\flat} , and a^{\flat} . The system ends with a double bar line and a repeat sign.

Handwritten musical notation for the third system. The treble clef staff features chords b^{\flat} , b^{\flat} , a^{\flat} , and a^{\flat} . The bass clef staff contains chords b^{\flat} , b^{\flat} , a^{\flat} , and a^{\flat} . The system concludes with a double bar line and a repeat sign.

Handwritten musical notation on a grand staff. The first system is marked "frei" (ad libitum) and the second system is marked "ruhig" (calmly). The notation includes a circled treble clef, a key signature of one flat, and various rhythmic values and accidentals. A large slur spans across both systems.

Handwritten musical notation on a grand staff. The first system is marked "rit + tolli" (ritardando and decelerando). The notation includes a treble clef, a key signature of one flat, and various rhythmic values and accidentals. A large slur spans across both systems.

Handwritten musical notation on a grand staff. The notation includes a treble clef, a key signature of one flat, and various rhythmic values and accidentals. A double bar line is present, followed by the handwritten text "p.c. al Fine".

5

Mod.

Handwritten musical notation for the first system. The treble clef staff contains a melodic line with a circled 'p' dynamic marking, a slur over the first two measures, and a triplet of eighth notes in the third measure. The bass clef staff contains a bass line with a slur over the first two measures and a triplet of eighth notes in the third measure. The key signature has one sharp (F#).

Handwritten musical notation for the second system, similar to the first. It features a treble and bass clef with a circled 'p' dynamic marking and a triplet of eighth notes in the treble staff. The key signature has one sharp (F#).

Handwritten musical notation for the third system, continuing the piece. It features a treble and bass clef with a circled 'p' dynamic marking and a triplet of eighth notes in the treble staff. The key signature has one sharp (F#).

Handwritten musical notation for the first system. The treble staff contains a melodic line with notes, accidentals (sharps), and accents. A triplet of notes is marked in the final measure of the treble staff. The bass staff contains a complex accompaniment with many notes and accidentals.

Handwritten musical notation for the second system, which is heavily crossed out with diagonal lines, indicating it is to be discarded or revised.

Handwritten musical notation for the third system. The treble staff contains a melodic line with notes, accidentals, and accents. A triplet of notes is marked in the final measure of the treble staff. The bass staff contains a complex accompaniment with many notes and accidentals.

Handwritten musical notation for the fourth system. The treble staff contains a melodic line with notes, accidentals, and accents. A triplet of notes is marked in the final measure of the treble staff. The bass staff contains a complex accompaniment with many notes and accidentals. The system ends with a large bracket on the right side.

Handwritten musical notation for the first system. The treble clef staff contains a circled number '24' in the first measure, followed by notes with accents (^) and slurs. The bass clef staff contains a series of chords with plus signs (+) and slurs. The system concludes with a double bar line.

Handwritten musical notation for the second system. The treble clef staff continues with notes and accents, ending with a circled number '3' and a double bar line. The bass clef staff features a long slur across the measures.

Handwritten musical notation for the third system. The treble clef staff contains notes with accents and a circled number '3' above a double bar line. The bass clef staff has notes with plus signs and slurs.

Handwritten musical notation for the fourth system. The treble clef staff contains notes with accents and a circled number '3' below a double bar line. The bass clef staff has notes with plus signs and slurs.

Handwritten musical notation for the first system. The treble clef staff contains a melodic line with a slur over the first two measures and a triplet of eighth notes in the second measure. The bass clef staff contains a bass line with a triplet of eighth notes in the second measure. The key signature has one sharp (F#).

Handwritten musical notation for the second system. The treble clef staff contains a melodic line with a slur over the first two measures and a triplet of eighth notes in the second measure. The bass clef staff contains a bass line with a triplet of eighth notes in the second measure. The key signature has one sharp (F#).

Handwritten musical notation for the third system. The treble clef staff contains a melodic line with a slur over the first two measures and a triplet of eighth notes in the second measure. The bass clef staff contains a bass line with a triplet of eighth notes in the second measure. The key signature has one sharp (F#).

Handwritten musical notation for the first system, featuring a treble clef, a key signature of one sharp (F#), and a 3/4 time signature. The right hand plays a series of chords and a triplet of eighth notes. The left hand plays a rhythmic accompaniment of eighth notes.

Handwritten musical notation for the second system, continuing the piece. The right hand has a triplet of eighth notes and a chord. The left hand has a rhythmic accompaniment of eighth notes.

Handwritten musical notation for the third system, featuring a treble clef, a key signature of one sharp (F#), and a 3/4 time signature. The right hand has a triplet of eighth notes and a chord. The left hand has a rhythmic accompaniment of eighth notes.

Handwritten musical notation for the fourth system, featuring a treble clef, a key signature of one sharp (F#), and a 3/4 time signature. The right hand has a triplet of eighth notes and a chord. The left hand has a rhythmic accompaniment of eighth notes.

D.C. due
||:|
dann weiter

(immer schwächer werden)

Handwritten musical notation for the first system. The treble clef staff contains a melodic line with notes, accidentals (sharps), and slurs. The bass clef staff contains a bass line with notes and slurs. There are dynamic markings like 'p' and 'f' and some handwritten annotations.

Handwritten musical notation for the second system. The treble clef staff contains a melodic line with notes, accidentals, and slurs. The bass clef staff contains a bass line with notes and slurs. There are dynamic markings like 'p' and 'f' and some handwritten annotations.

Handwritten musical notation for the third system. The treble clef staff contains a melodic line with notes, accidentals, and slurs. The bass clef staff contains a bass line with notes and slurs. There are dynamic markings like 'p' and 'f' and some handwritten annotations.

Handwritten musical notation for the fourth system. The treble clef staff contains a melodic line with notes, accidentals, and slurs. The bass clef staff contains a bass line with notes and slurs. There are dynamic markings like 'p' and 'f' and some handwritten annotations.