

ATONALI

71

A. Scherbaum

FLÖTE (und ORGEL)
KLAVIER
SCHLAGZEUG (Jazz)

sehr langsam
(viel Vibrato) (über eigenes Mikrofon - und - Verstärkeranlage) (Flöte)

Flöte

SCHNITT-
werk

Flöte

SCHN.
w.

Klavier
(über
Saiten)

Flöte

Klavier

SCHL.
w.

ausklingen →

SOULÉ W.

Flöte

pp

cresc. →

mf

f

ff

KLAVIER (LOWEE)

fff Pedal

GLEICHE VIERTEL - rascheste freie Bewegungen

(Klavier - ansklingen →)

pppp

(Bewegung) immer ruhiger - leiser..... →

gr. rit.....

pppp

SEHR —
RASCH —

SCHL. Werk $\frac{2}{2}$ / $\frac{4}{4}$
ppp

Klavier

BLOCK [A] = 10 Takte

SEMPE cresc... | SCHL.W. und Klavier genau achten auf **Lautstärken** (von Flöte) —

SCHL. w. KLAVIER

Flöte

BLOCK

(A)

BLOCK

(A)

Fluttering.

(BLOCK)

(A)

(BLOCK)

(A)

Block A

Block A

5 TAKTE BL. A

10 TAKTE (BLOCKA)

SCH. 2.
+ Klavier

Flöte

IMPROVISATION (HARMONIE-ANGABE)

Bl. (A)

Block (B)

Klavier
Schlag.
+ Flöte

Block (A)

Block (B)

Bl. (A)

Bl. (B)

Bl. (A)

Bl. (B)

Bl. (A)

Bl. (B)

Bl. (A)

Bl. (B)

Bl. (A)

mmr (Bl. (A))

fff (Flöte geht zum Orgel)

Bl. (A)

Saxo

Block (C)

Bl. (A)

Bl. (C)

Bl. (A)

Bl. (C)

Schl. 2. Klavier

Orgel

Bl. (A)

Bl. (R)

The image shows a handwritten musical score for a woodwind instrument, labeled "Bl. (R)". The score is organized into six horizontal staves. The first five staves contain rhythmic notation, primarily consisting of eighth and sixteenth notes, often grouped with beams and slurs. Some notes are marked with a wavy line, possibly indicating a tremolo or a specific articulation. The notation is somewhat sketchy and appears to be a working draft. The sixth staff at the bottom is a grand staff, consisting of a treble clef on the left and five lines. It contains several musical symbols, including a treble clef, a key signature with one flat (B-flat), and a time signature with a common time (C) and a 2/4 or 3/4 time signature. The rest of the grand staff is mostly empty, with some faint lines and markings.

SCHLW.

Klavier

ORGER

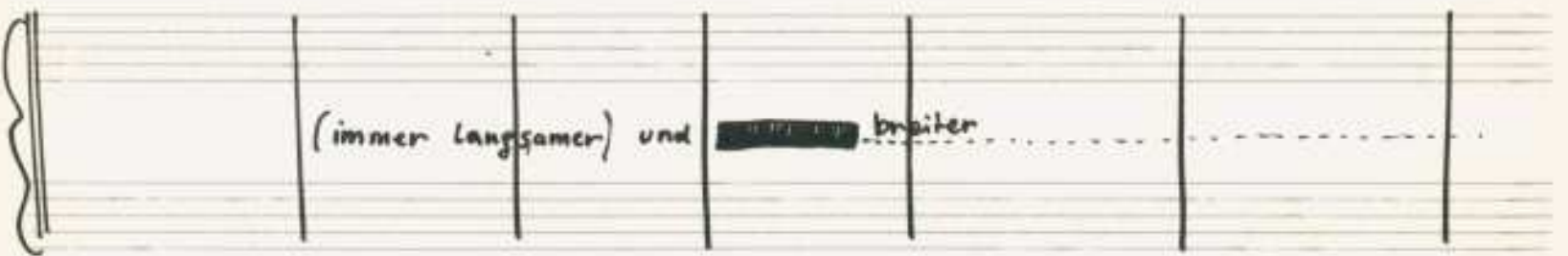
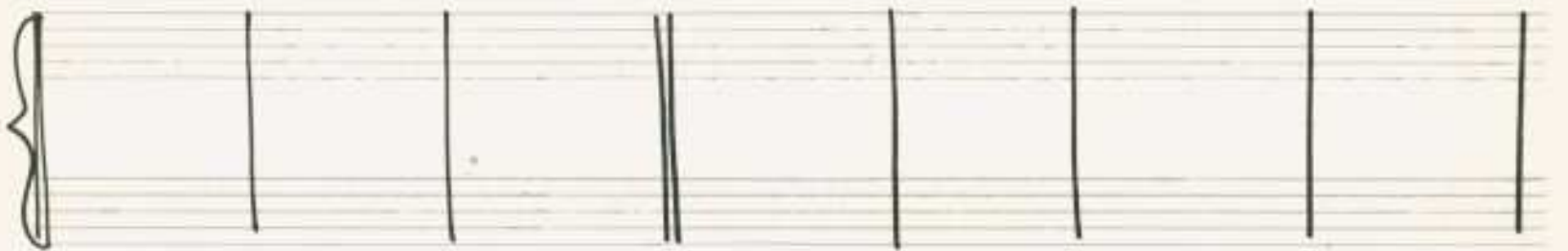
Handwritten musical score for the first system. It features a treble clef staff with a key signature of one flat and a 3/4 time signature. The bass clef staff contains a complex arrangement of notes and rests, with a large bracketed section in the middle. The notation is dense and includes various musical symbols.

Handwritten musical score for the second system. It continues the piece with a treble clef staff and a bass clef staff. The notation is highly detailed, showing intricate melodic lines and harmonic structures. The key signature remains one flat.

Handwritten musical score for the third system. The top staff is labeled "ÜBER SAITEN STREICHEN" (over strings) and includes a "Pedal" instruction with an arrow. The bottom staff shows a complex rhythmic pattern with many vertical lines, suggesting a dense texture. The notation is very expressive and includes various musical symbols.

(SCHLAGZEUGE | Solo)





(langsam) breit

SCHLAG.

Klavier

ORGEL

Handwritten musical score for the first system. It consists of three staves: Schlagzeug (top), Klavier (middle), and Orgel (bottom). The organ part is written in two staves (treble and bass clefs) and includes a 4/4 time signature. The notation includes various notes, rests, and dynamic markings such as *pp* and *ppp*. A fermata is placed over the organ part in the third measure. The piano part is indicated by a bracket on the left but contains no notes.

Handwritten musical score for the second system, continuing from the first. It features the same three staves: Schlagzeug, Klavier, and Orgel. The organ part continues with similar notation, including notes, rests, and dynamic markings like *pp* and *ppp*. A fermata is present in the third measure. The piano part remains empty.

Handwritten musical score for the third system. It features two staves: Orgel (top) and Klavier (bottom). The organ part is mostly empty, with a few notes at the end. The piano part contains a long, horizontal line with a left-pointing arrow and the text "gr. dim rit....". At the end of the system, there are dynamic markings *ppp* and the instruction "Nimmt Flüte".

Temp I. sehr langsam) frei

(viel Vibrato - (mit eigenen Mikrofon - und Verstärkeranlage - mit Lautsprecher.....)

Handwritten musical notation for the first system. It features a treble clef, a 6/4 time signature, and a key signature of one sharp (F#). The notation includes notes with various dynamics such as *ppp* and *pp*, and articulations like accents (^) and slurs. There are also some wavy lines indicating vibrato or tremolo.

Handwritten musical notation for the second system. It includes piano accompaniment with notes and a wavy line. There are handwritten annotations in German: "Klavier (in raschen Bewegungen ppp über Saiten streichen)" and "Pedal - bis". The notation includes notes with dynamics like *ppp* and *pp*, and articulations like accents (^) and slurs.

Handwritten musical notation for the third system. It shows notes and a wavy line with dynamics like *f* and *pp*. There are also some slurs and accents.

Handwritten musical notation for the fourth system. It includes parts for "Flöte" and "SCHLZ.". The notation includes notes with dynamics like *pp* and *pppp*, and articulations like slurs and accents. There is a handwritten note "verklängen lassen....." below the *pppp* dynamic.