

ATONALI

71

A. Scherbaum

FLÖTE (und ORGEL)

KLAVIER

SCHLAGZEUG (Jazz)

alte Klangmasse  
(viel Vibrato) (mit eigenem Mikrofon - und - Verstärkeranlage) (Flöte)

Flöte

SCHALLW.

Flöte

SCHALLW.

Klavier (mit Schallw.)

Flöte

Klavier 2.

SCHALLW.

SOLG  
Flöte

pp cresc. f

KLAVIER (CLAVIER)

FFF Pedal

GLEICHE VIERTEL - FASCHSTE FRÖHE BEWEGUNGEN

(Klarinetten - ausklingen) →

(Bewegung) immer ruhiger - leiser →

ppp

SEHR —  
RASCH —

SCHL.  
Werk

Klavier

A musical staff with five vertical bar lines, representing a sequence of measures. The staff is empty, with only the horizontal lines and bar lines visible.

Block **A** = 10 Takte

Musical notation for a 10-measure block. The notation is written in a single staff with a treble clef and a key signature of one sharp (F#). The notes are:  $d^{\wedge}$ ,  $b^{\wedge}$ ,  $d^{\wedge}$ ,  $b^{\wedge}$ ,  $d^{\wedge}$ ,  $b^{\wedge}$ ,  $d^{\wedge}$ ,  $b^{\wedge}$ ,  $d^{\wedge}$ ,  $b^{\wedge}$ . The notes are grouped in pairs across five measures. There are dynamic markings  $pp$  at the beginning and end of the block.

SEHR cresc... | SCHL.W. und Klavier genau achten auf Lautstärke (von Flöte) —

SCHL.  
W.  
Klavier

Flöte

B L O C K

Musical notation for Flute and Piano parts. The Flute part (top staff) has notes  $d^{\wedge}$ ,  $b^{\wedge}$ ,  $d^{\wedge}$ ,  $b^{\wedge}$  in the first measure and  $d^{\wedge}$ ,  $b^{\wedge}$ ,  $d^{\wedge}$ ,  $b^{\wedge}$  in the second measure. The Piano part (bottom staff) has notes  $d$ ,  $b$ ,  $d$ ,  $b$  in the first measure and  $d$ ,  $b$ ,  $d$ ,  $b$  in the second measure. There are dynamic markings  $pp$  and  $f$ .

( A )

Musical notation for a Piano part. The notes are  $b^{\wedge}$ ,  $d^{\wedge}$ ,  $b^{\wedge}$ ,  $d^{\wedge}$ ,  $b^{\wedge}$ ,  $d^{\wedge}$ ,  $b^{\wedge}$ ,  $d^{\wedge}$ . There are dynamic markings  $f$  and  $pp$ .

B L O C K

Musical notation for a Piano part. The notes are  $b^{\wedge}$ ,  $d^{\wedge}$ ,  $b^{\wedge}$ ,  $d^{\wedge}$ ,  $b^{\wedge}$ ,  $d^{\wedge}$ ,  $b^{\wedge}$ ,  $d^{\wedge}$ . There are dynamic markings  $f$  and  $pp$ .

(A)

(Block)

(A)

(Block)

(A)

BLOCK A

BLOCK A

5 TAKTE BLOCK A

10 TAKTE (BLOCK A)

Scal. 2.  
+ Klavier

Flöte

Improvisation (HARMONIKEN-ANGABE)

Bl. (A)

Block (B)

Klavier  
Schlag.  
+ Flöte

Block (A)

Block (B)

Bl. (A)

Bl. (B)

Bl. (A)

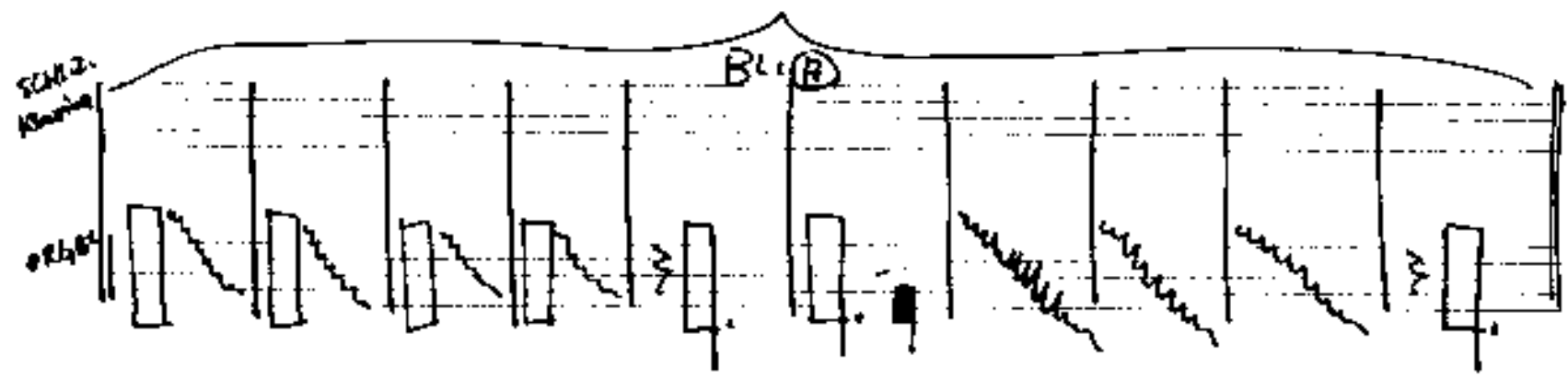
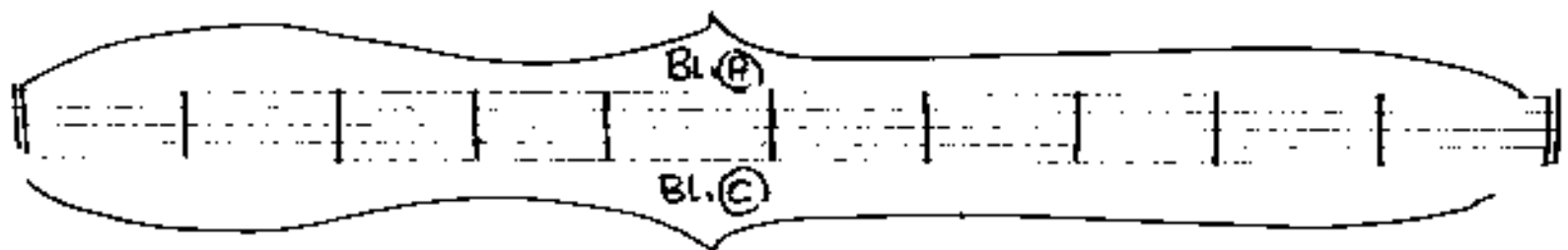
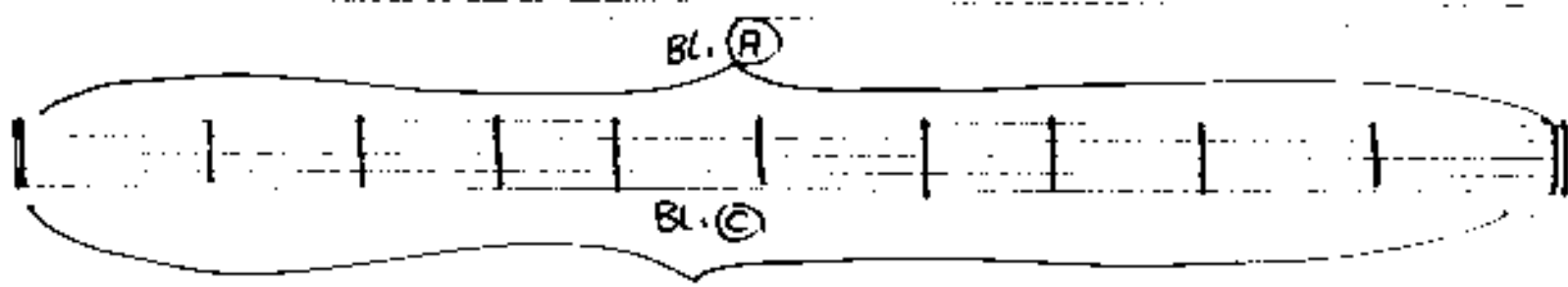
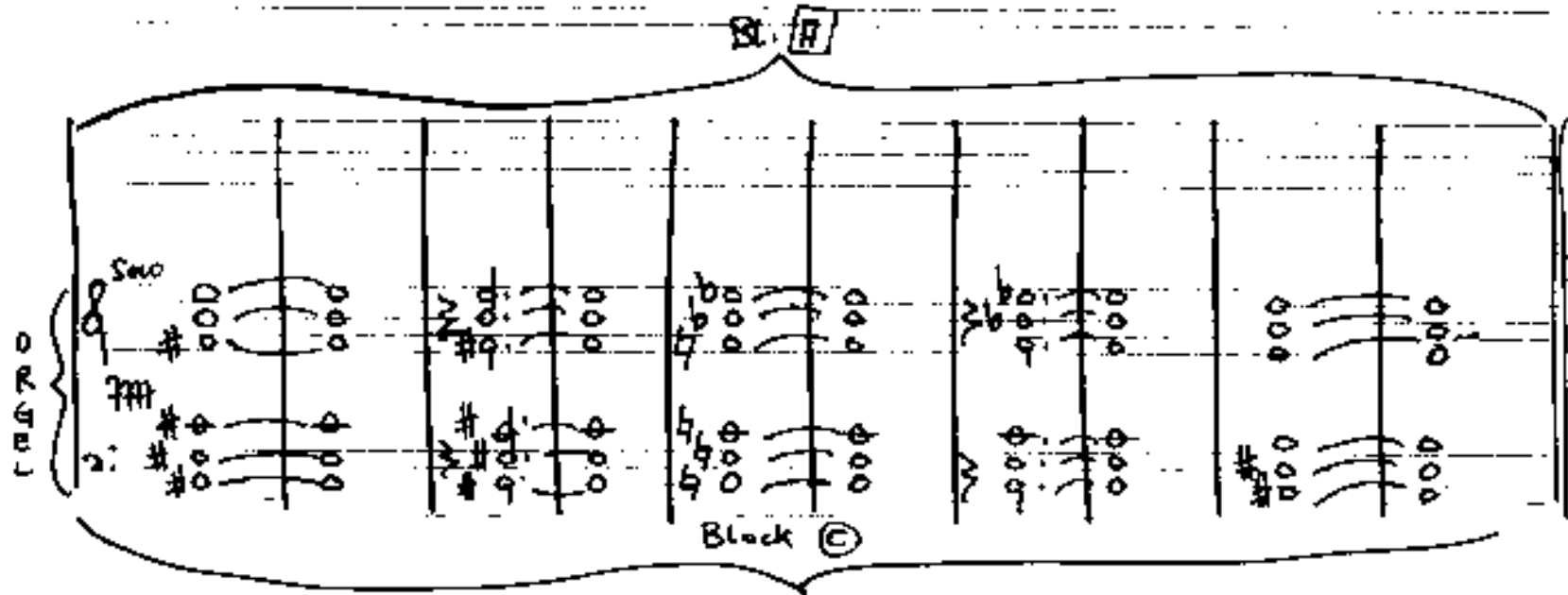
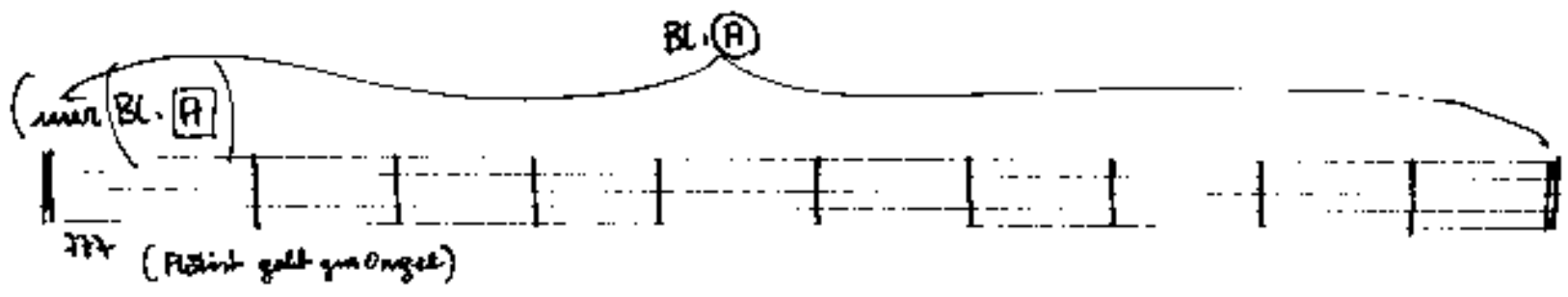
Bl. (B)

Bl. (A)

Bl. (B)

Bl. (A)

Bl. (B)





Ex. 10

The image displays six systems of handwritten musical notation for guitar. Each system consists of six staves. The notation is a form of guitar tablature, using various symbols to represent fret positions and techniques. The first system is enclosed in a large bracket and labeled 'Ex. 10'. The bottom-most staff is a single staff with a treble clef and a key signature of one sharp (F#).

SCHLW.

Klavier

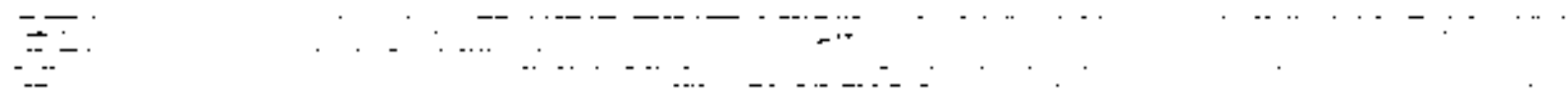
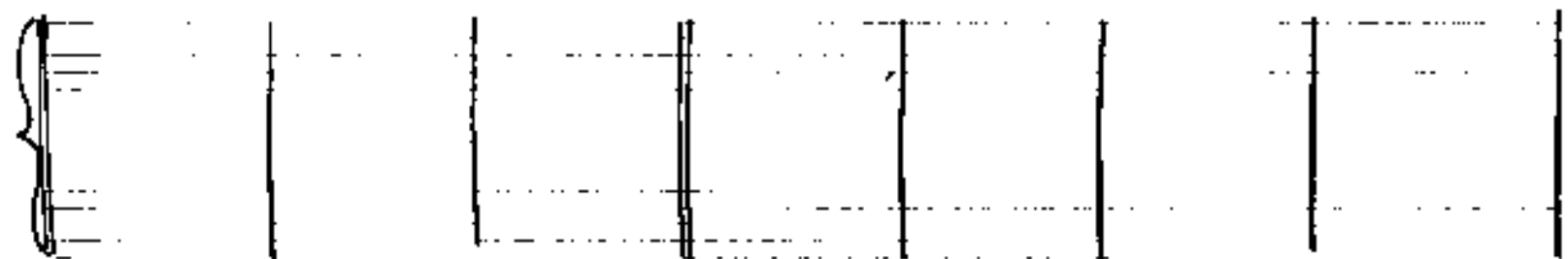
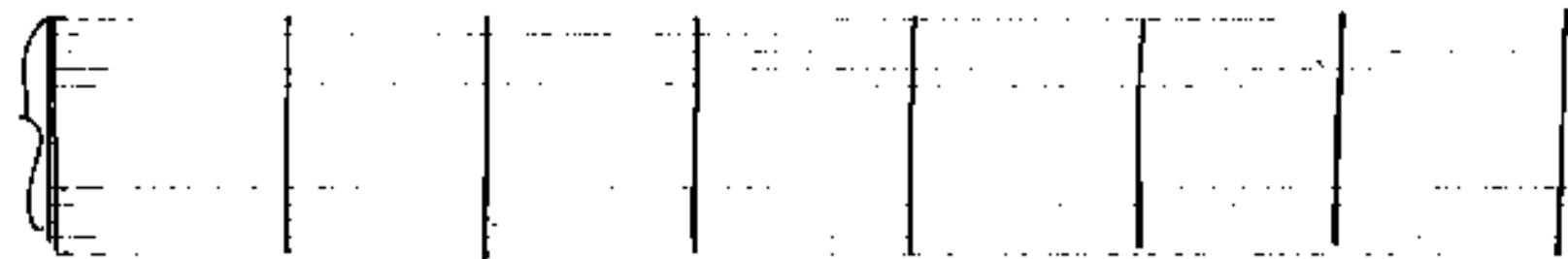
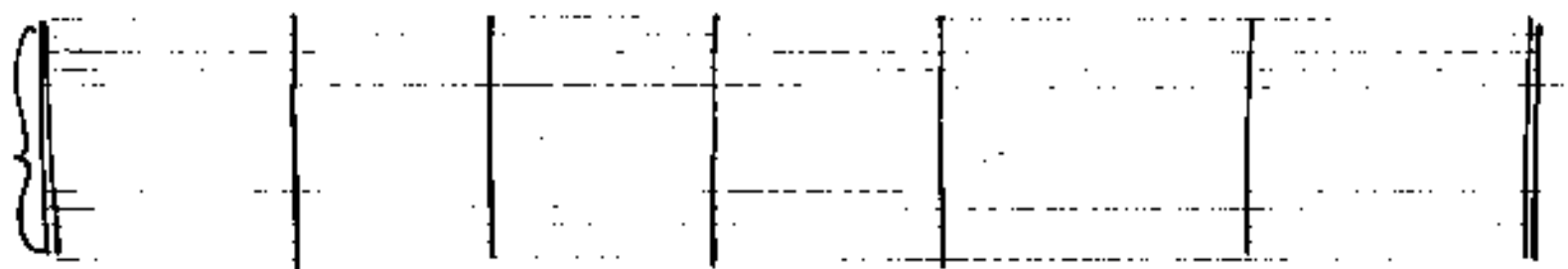
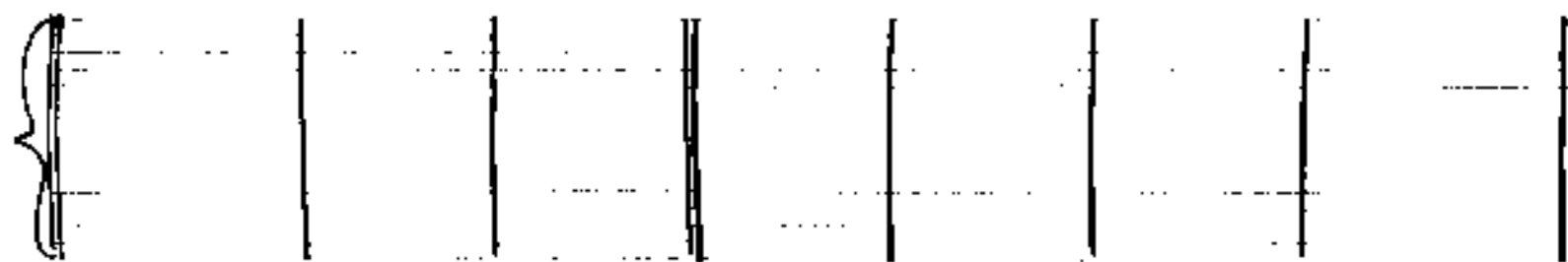
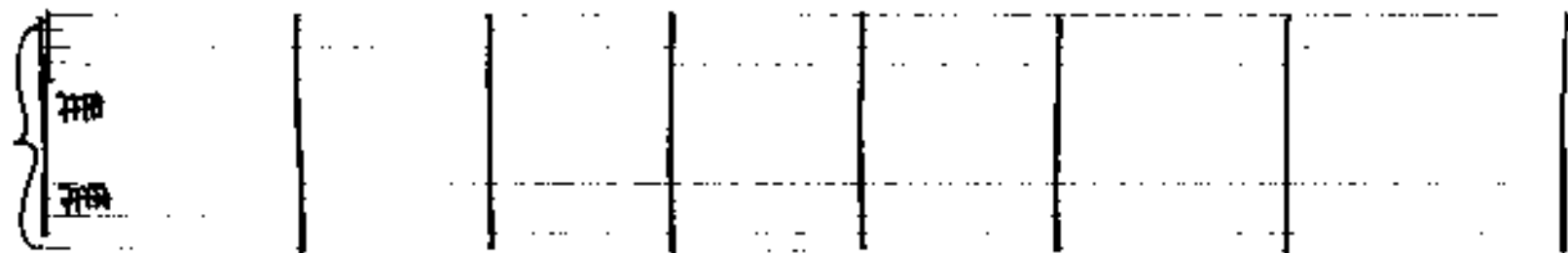
ORGE

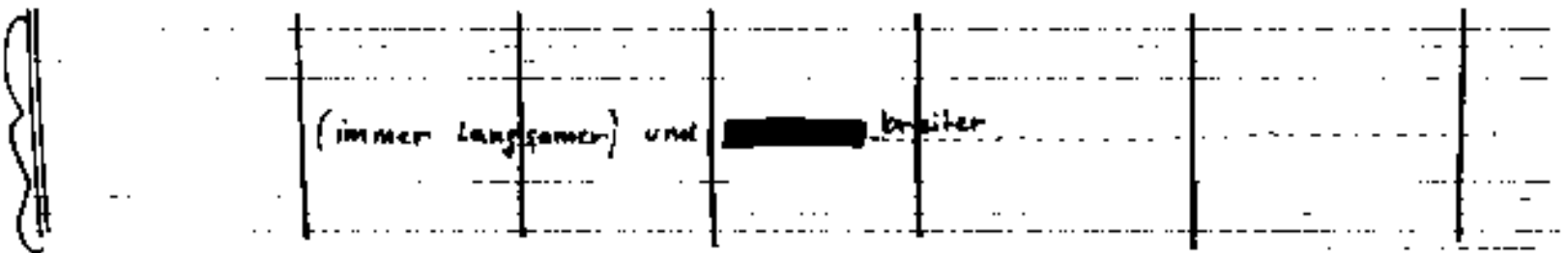
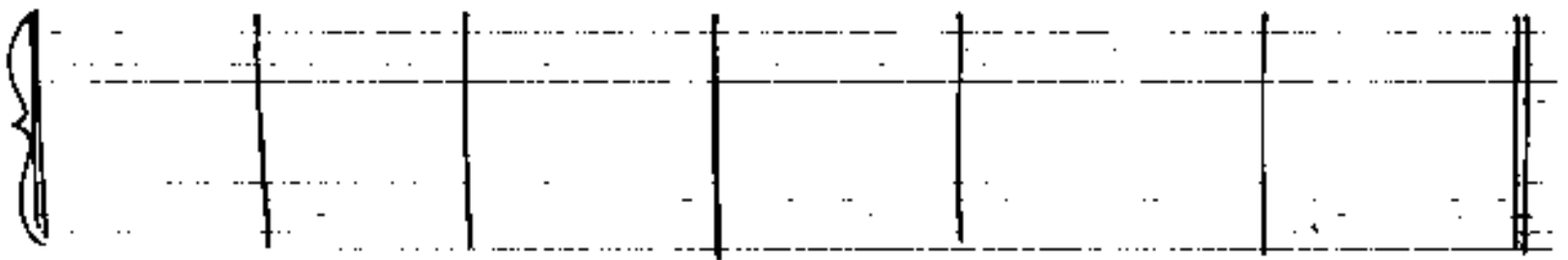
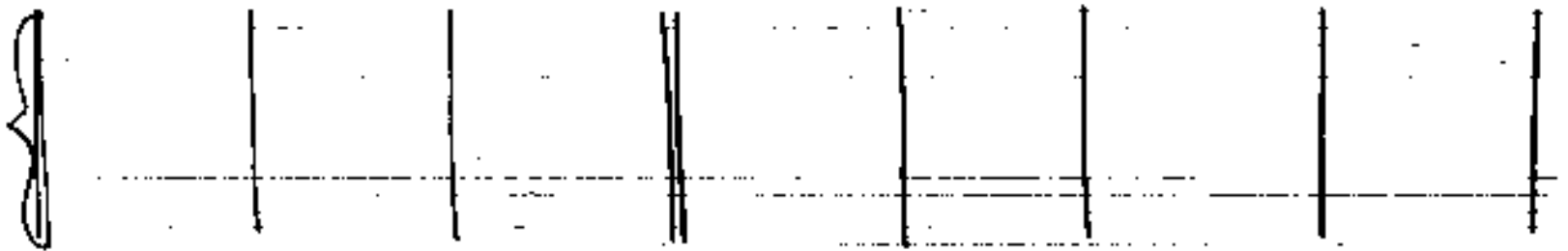
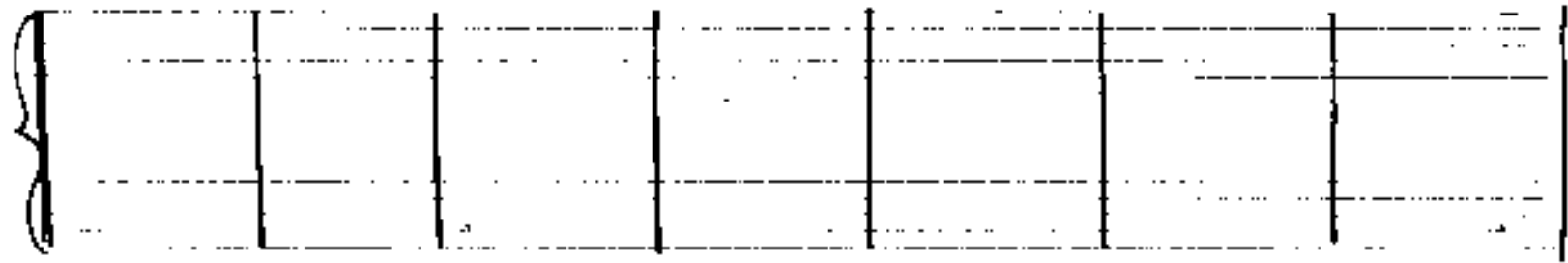
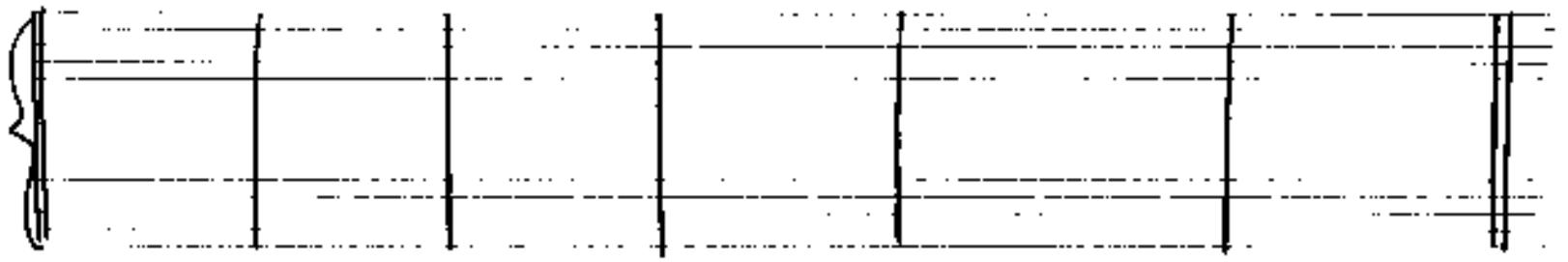
Handwritten musical score system 1. It consists of three staves. The top staff contains a sequence of notes with a treble clef and a key signature of two flats. The middle staff shows a complex chordal structure with many notes and some markings. The bottom staff contains a series of notes with a bass clef. There are some annotations and a bracketed section in the middle staff.

Handwritten musical score system 2. It consists of three staves. The top staff contains a sequence of notes with a treble clef and a key signature of two flats. The middle staff shows a complex chordal structure with many notes and some markings. The bottom staff contains a series of notes with a bass clef. There are some annotations and a bracketed section in the middle staff.

Handwritten musical score system 3. It consists of three staves. The top staff contains a sequence of notes with a treble clef and a key signature of two flats. The middle staff shows a complex chordal structure with many notes and some markings. The bottom staff contains a series of notes with a bass clef. There are some annotations and a bracketed section in the middle staff.

(SCHERZOS | Solo)





(langsam) breit

SCHNITZ  
Klavier  
ORGA

Handwritten musical score for the first system. It features three staves: Schütz (top), Klavier (middle), and ORGA (bottom). The ORGA part is marked with a 4/4 time signature and a key signature of one sharp (F#). The music consists of dense, overlapping chords and melodic lines, with various dynamics and articulation marks such as accents and slurs. The notation is dense and expressive, typical of a sketch or working draft.

Handwritten musical score for the second system, continuing the complex textures from the first system. It features three staves: Schütz, Klavier, and ORGA. The notation is dense and expressive, with various dynamics and articulation marks. The overall style is that of a working draft or sketch.

Handwritten musical score for the third system. It features three staves: Schütz, Klavier, and ORGA. The music is characterized by a gradual dynamic change, indicated by the marking "p. dim" with an arrow pointing left, and a "rit." marking. The dynamics reach "ppp" (pianissimo) at the end of the system. The notation is dense and expressive, with various dynamics and articulation marks. The overall style is that of a working draft or sketch.

Temp I. (relativ langsam) *f* *mf*

(viel Vibrato - (mit eigenen Mikrofon - und Verstärkeranlage - mit Lautsprecher...))

klassisch  
(Intrinsischen  
Bewegungen  
ppp über  
Saiten  
streichen)

Pedal - bis

Flöte

pp

pppp

verklungen lassen...