

ATONALI

71

A. Scherbaum

FLÖTE (und ORGEL)

KLAVIER

SCHLAGZEUG (Jazz)

sehr langsam
(viel Vibrato) (über eigenes Mikrophon - und - Verstärkeranlage) (Flöte)

Flöte

SCHL. w.

Flöte

SCHL. w.

Klavier (über Stielen)

Flöte

Klavier

SCHL. w.

ausklingen →

SOLO w.

Flöte

pp

cresc. →

mf

f

ff

KLAVIER (CLUSTER)

fff Pedal

b

mp

GLEICHE VIERTEL - rascheste freie Bewegungen

(Klavier - anschlingen →)

pppp

gr. rit.....

(Bewegung) immer ruhiger - leiser..... →

pppp

(A)

Handwritten musical notation for the first system, featuring a treble clef and a series of notes with accidentals (sharps and flats) and dynamic markings like 'f' and 'Flatters.'

(BLOCK)

Handwritten musical notation for the second system, labeled '(BLOCK)', showing a sequence of notes with various accidentals and dynamic markings.

(A)

Handwritten musical notation for the third system, labeled '(A)', with notes and accidentals.

(BLOCK)

Handwritten musical notation for the fourth system, labeled '(BLOCK)', containing a sequence of notes and accidentals.

(A)

Handwritten musical notation for the fifth system, labeled '(A)', showing notes and accidentals.

BLOCK #

BLOCK #

5 TAKTE BL.#

10 TAKTE (BLOCK#)

Sch. 2. + Klavier

Flöte

Bl. (A)

Bl. (B)

flüchtige IMPROVISATION (HARMONIE-ANGABE)

Klavier Schlag. + Flöte

Block (A)

Block (B)

Bl. (A)

Bl. (B)

Bl. (A)

Bl. (B)

Bl. (A)

Bl. (B)

Bl. (A)

Bl. (B)

Bl. (A)

(nur Bl. (A))

fff (Flöte geht zum Orgel)

Bl. (A)

Solo

fff

Block (C)

Bl. (A)

Bl. (C)

Bl. (A)

Bl. (C)

SCHLZ. Klavier

ORGBL

Bl. (A)

Bl. (R)

The image shows a handwritten musical score consisting of six staves. The first five staves contain rhythmic notation, likely for a guitar or similar instrument, using square notes and wavy lines to represent chords and tremolos. A bracket above the first staff is labeled "Bl. (R)". The sixth staff begins with a treble clef, a key signature of one flat (B-flat), and a time signature of 4/4. Below the sixth staff is a large, empty staff with a wavy line underneath, possibly indicating a continuation or a specific performance instruction.

SCHLW.

Klavier

ORGE

The first system of the handwritten musical score consists of three staves. The top staff is labeled 'SCHLW.' and contains a treble clef, a key signature of one flat (B-flat), and a 3/4 time signature. It begins with a complex chord structure: a bass note with a flat, a middle note with a sharp, and a top note with a flat, all under a slur. This is followed by a series of eighth notes, each with a vertical line through it. The middle staff is labeled 'Klavier' and contains a treble clef, a key signature of one flat, and a 3/4 time signature. It begins with a complex chord structure: a bass note with a flat, a middle note with a sharp, and a top note with a flat, all under a slur. This is followed by a series of eighth notes, each with a vertical line through it. The bottom staff is labeled 'ORGE' and contains a treble clef, a key signature of one flat, and a 3/4 time signature. It begins with a complex chord structure: a bass note with a flat, a middle note with a sharp, and a top note with a flat, all under a slur. This is followed by a series of eighth notes, each with a vertical line through it.

The second system of the handwritten musical score consists of three staves. The top staff is labeled 'SCHLW.' and contains a treble clef, a key signature of one flat, and a 3/4 time signature. It begins with a complex chord structure: a bass note with a flat, a middle note with a sharp, and a top note with a flat, all under a slur. This is followed by a series of eighth notes, each with a vertical line through it. The middle staff is labeled 'Klavier' and contains a treble clef, a key signature of one flat, and a 3/4 time signature. It begins with a complex chord structure: a bass note with a flat, a middle note with a sharp, and a top note with a flat, all under a slur. This is followed by a series of eighth notes, each with a vertical line through it. The bottom staff is labeled 'ORGE' and contains a treble clef, a key signature of one flat, and a 3/4 time signature. It begins with a complex chord structure: a bass note with a flat, a middle note with a sharp, and a top note with a flat, all under a slur. This is followed by a series of eighth notes, each with a vertical line through it.

The third system of the handwritten musical score consists of three staves. The top staff is labeled 'SCHLW.' and contains a treble clef, a key signature of one flat, and a 3/4 time signature. It begins with a complex chord structure: a bass note with a flat, a middle note with a sharp, and a top note with a flat, all under a slur. This is followed by a series of eighth notes, each with a vertical line through it. The middle staff is labeled 'Klavier' and contains a treble clef, a key signature of one flat, and a 3/4 time signature. It begins with a complex chord structure: a bass note with a flat, a middle note with a sharp, and a top note with a flat, all under a slur. This is followed by a series of eighth notes, each with a vertical line through it. The bottom staff is labeled 'ORGE' and contains a treble clef, a key signature of one flat, and a 3/4 time signature. It begins with a complex chord structure: a bass note with a flat, a middle note with a sharp, and a top note with a flat, all under a slur. This is followed by a series of eighth notes, each with a vertical line through it.

Handwritten musical score for the first system. The top staff is a vocal line with a treble clef and a key signature of two flats (B-flat and E-flat). The bottom two staves are piano accompaniment. The piano part includes a complex chordal texture in the left hand and a more melodic line in the right hand. There are some scribbles and corrections in the piano part.

Handwritten musical score for the second system. It continues the vocal line and piano accompaniment from the first system. The piano part shows further development of the complex textures, with some notes being crossed out or corrected.

Handwritten musical score for the third system. The top staff is labeled "ÜBERSAITEN STREICHEN" (Overstringed strings) and contains a highly rhythmic and complex melodic line. The bottom two staves are labeled "Klavier (Pedal bis)" and feature a dense, rhythmic texture with many vertical lines, suggesting a complex piano accompaniment. There are annotations like "(Pedal)" and "Klavier (Pedal bis)" with arrows pointing to specific parts of the score.

(SCHNURZEUG | Solo)

A musical staff with two staves joined by a brace on the left. The top staff has a piano marking 'ppp' and the bottom staff has a piano marking 'ppp'. The staff is divided into seven measures by vertical bar lines.

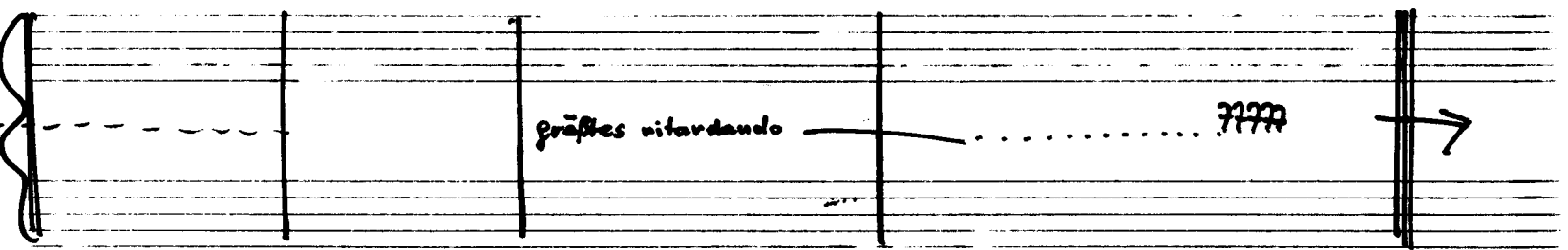
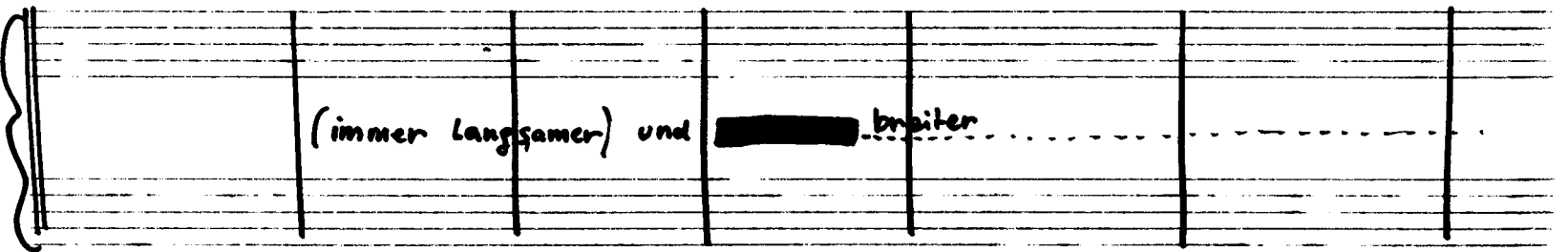
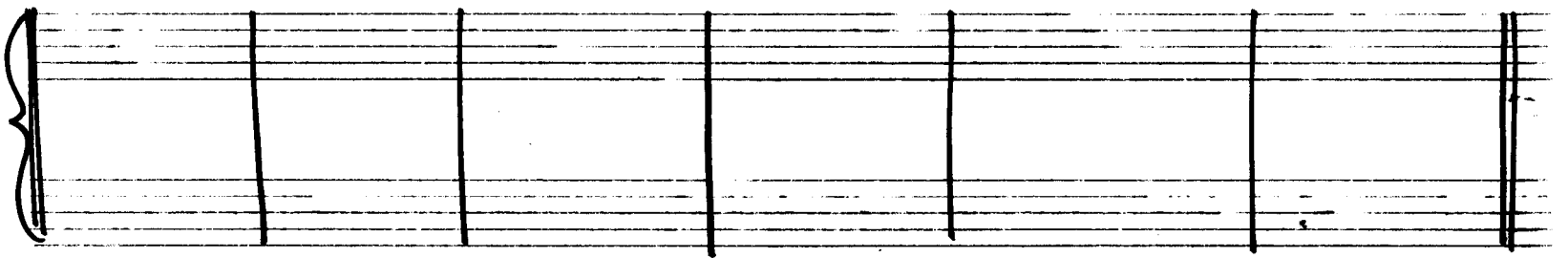
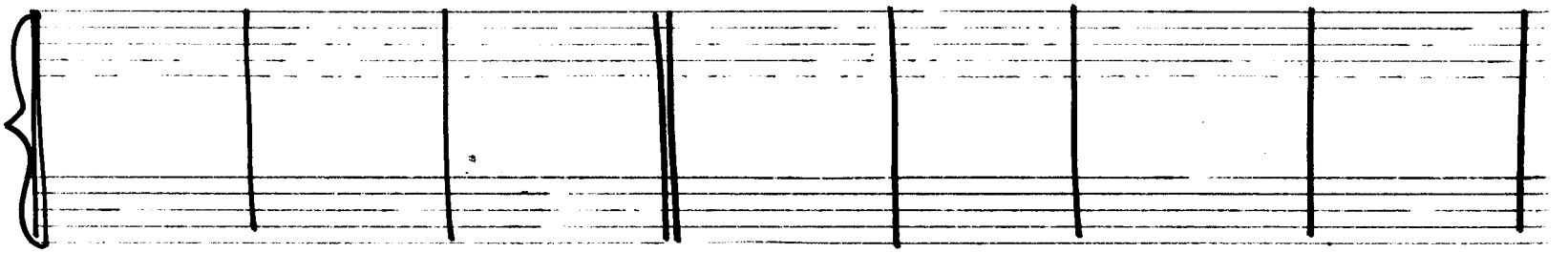
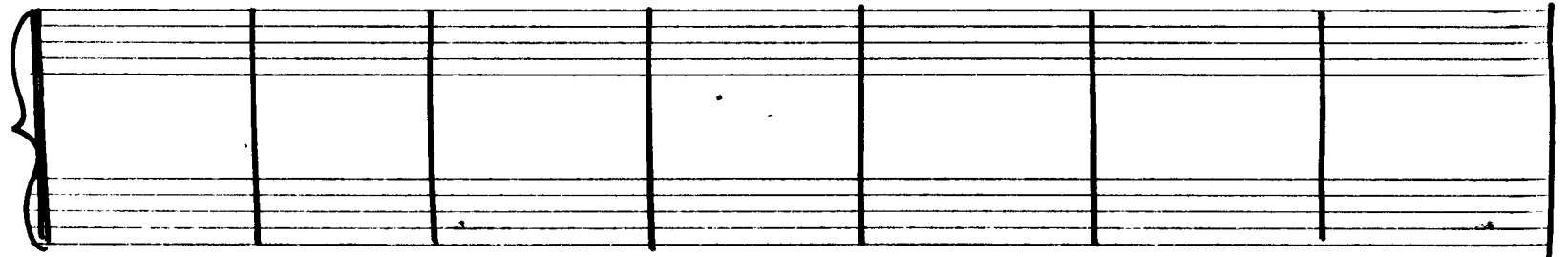
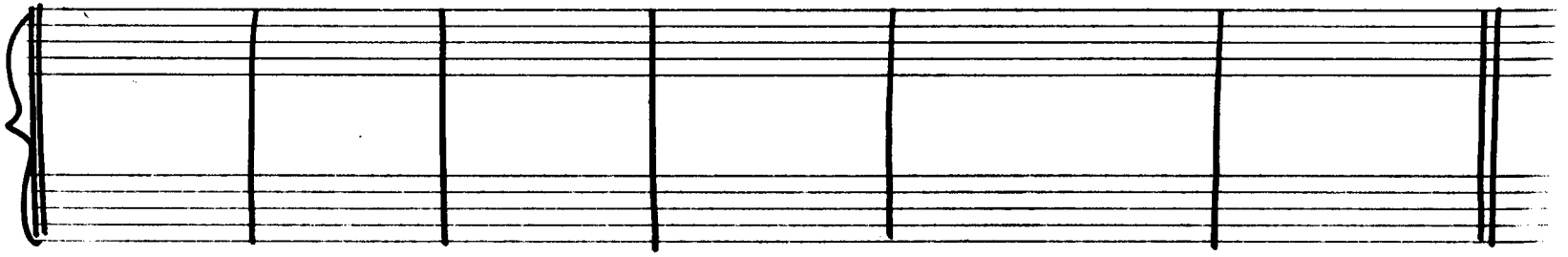
An empty musical staff with two staves joined by a brace on the left. The staff is divided into seven measures by vertical bar lines.

An empty musical staff with two staves joined by a brace on the left. The staff is divided into seven measures by vertical bar lines.

An empty musical staff with two staves joined by a brace on the left. The staff is divided into seven measures by vertical bar lines.

An empty musical staff with two staves joined by a brace on the left. The staff is divided into seven measures by vertical bar lines.

An empty musical staff with two staves joined by a brace on the left. The staff is divided into seven measures by vertical bar lines.



(langsam) breit

SCHLAG.

Klavier

ORGEL

Handwritten musical score for Schlägel, Klavier, and Orgel. The Schlägel part is empty. The Klavier part has a treble clef and a 4/4 time signature. The Orgel part has a bass clef and a 4/4 time signature. The music features a melodic line in the right hand with a flat, a bass line with a flat, and a dense chordal texture in the left hand. A fermata is placed over the end of the piece.

Handwritten musical score for Klavier and Orgel. The Klavier part has a treble clef and a 4/4 time signature. The Orgel part has a bass clef and a 4/4 time signature. The music features a melodic line in the right hand with a flat, a bass line with a flat, and a dense chordal texture in the left hand. A fermata is placed over the end of the piece.

Handwritten musical score for Klavier and Orgel. The Klavier part has a treble clef and a 4/4 time signature. The Orgel part has a bass clef and a 4/4 time signature. The music features a melodic line in the right hand with a flat, a bass line with a flat, and a dense chordal texture in the left hand. A fermata is placed over the end of the piece. The text "gr. dim rit..." is written below the staff with an arrow pointing left, and "ppp" is written below the staff. The text "primär erste" is written to the right of the staff.

Temp I. *molto* langsam) frei

(viel Vibrato - (mit eigenen Mikrofon - und Verstärkeranlage - mit Lautsprecher.....)

klasses
(in raschen
Bewegungen
ppp über
Saiten
streichen)

Pedal - bis

Flöte

pp

ppp

verklungen lassen.....

SCH. 3.

ppp