

ATONALI

71

A. Scherbaum

FLÖTE (und ORGEL)

KLAVIER

SCHLAGZEUG (Jazz)

sehr langsam
(viel Vibrato) (über eigenes Mikrophon - und -Verstärkeranlage) (Flöte)

Flöte $\frac{6}{4}$ *pp*

Scharfwerk

Flöte *pp*

Scharfwerk

Klavier (über Saiten) *ff* Pedal

Flöte

Gliss
SCHLAG

Klavier *pp*

Scharfwerk

ausklingen →

SGLE w.

Flöte

pp

cresc. →

mf

f

ff

KLAVIER (CLUSTER)

fff Pedal

b

GLEICHE VIERTEL — rascheste freie Bewegungen

(Klavier — anschlingen →)

pppp

(Bewegung) immer ruhiger — leiser..... →

gr. rit.....

pppp

3

SEHR —
RASCH —

SCHL.
werk

Klavier

Two empty musical staves. The top staff is labeled 'SCHL. werk' and has a time signature of 2/4. The bottom staff is labeled 'Klavier'.

A musical notation for a five-measure block. Above the staff, it says 'BLOCK [A] = 5 Takte'. The notes are: $\hat{d} \hat{b} \hat{d}$, $\hat{d} \hat{b} \hat{d}$, $\hat{d} \hat{b} \hat{d}$, $\hat{d} \hat{b} \hat{d}$, $\hat{d} \hat{b} \hat{d}$. The first measure starts with 'ppp' and a fermata. The notes are marked with accents (^).

SEMPE cresc... | SCHL.W. und Klavier genau achten auf **Lautstärken** (von Flöte) —

Musical notation for Flöte and SCHL.W. KLAVIER. The Flöte part has notes $\hat{d} \hat{b} \hat{d}$ and $\hat{d} \hat{b} \hat{d}$ with accents and dynamics 'ppp' and 'pp'. The SCHL.W. KLAVIER part has the word 'BLOCK' written above it.

Musical notation for Flöte. It shows a melodic line with notes $\hat{b} \hat{a} \hat{b} \hat{a}$ and $\hat{d} \hat{b} \hat{d}$. Dynamics include 'f' and 'ff'. There are slurs and accents throughout.

Musical notation for Flöte. It shows a melodic line with notes $\hat{b} \hat{a}$ and $\hat{d} \hat{b} \hat{d}$. Dynamics include 'ff' and 'mf'. There are slurs and accents throughout.

(A)

Handwritten musical notation for the first system, featuring a treble clef and a key signature of one sharp (F#). The notation includes a series of notes with accidentals (b, #) and dynamic markings like 'f' and 'Flatters.'.

(BLOCK)

Handwritten musical notation for the second system, featuring a treble clef and a key signature of one sharp (F#). The notation includes a series of notes with accidentals and dynamic markings.

(A)

Handwritten musical notation for the third system, featuring a treble clef and a key signature of one sharp (F#). The notation includes a series of notes with accidentals and dynamic markings.

(BLOCK)

Handwritten musical notation for the fourth system, featuring a treble clef and a key signature of one sharp (F#). The notation includes a series of notes with accidentals and dynamic markings.

(A)

Handwritten musical notation for the fifth system, featuring a treble clef and a key signature of one sharp (F#). The notation includes a series of notes with accidentals and dynamic markings.

BLOCK #

BLOCK #

5 TAKTE BL. #

10 TAKTE (BLOCK #)

Schl. z. + Klavier

Flöte

freie IMPROVISATION (HARMONIE-ANGABE)

Bl. (A)

Block (B)

Klavier Schlgz. + Flöte

Block (A)

Block (B)

Bl. (A)

Bl. (B)

Bl. (A)

Bl. (B)

Bl. (A)

Bl. (B)

Bl. (A)

Bl. (B)

Bl. (A)

mmr (Bl. (A))

fff (Flöte geht zur Orgel)

Bl. (A)

Block (C)

Solo

fff

Bl. (A)

Bl. (C)

Bl. (A)

Bl. (C)

SCHLZ. Klavier

ORGE

Bl. (A)

Bl. (R)

The image shows six staves of handwritten musical notation. The notation is abstract, using squares and wavy lines on a staff. The first five staves show a rhythmic pattern of notes and rests, with some notes connected by wavy lines. The sixth staff is mostly empty, with some scribbled lines at the beginning. A circled 'R' is written above the first staff.

SCHL.W.

Klavier

ORGE

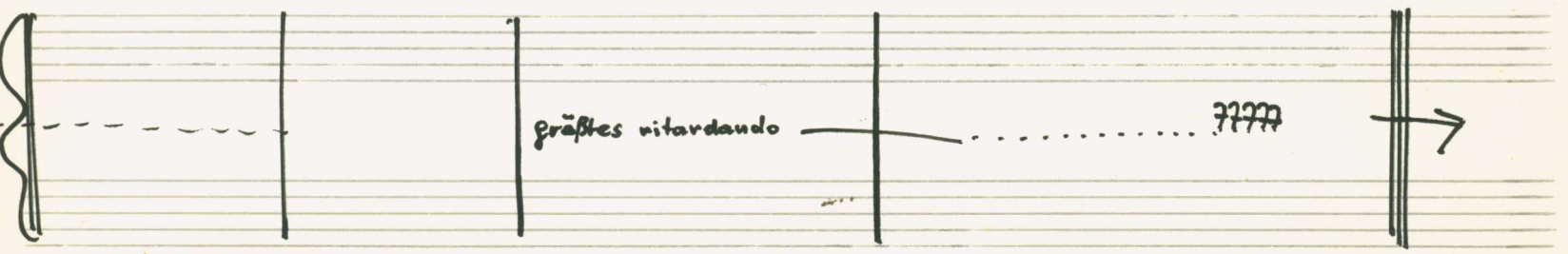
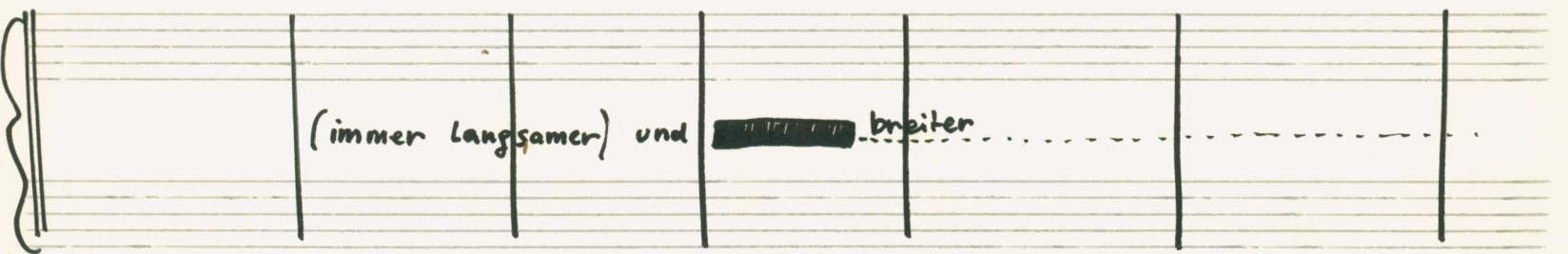
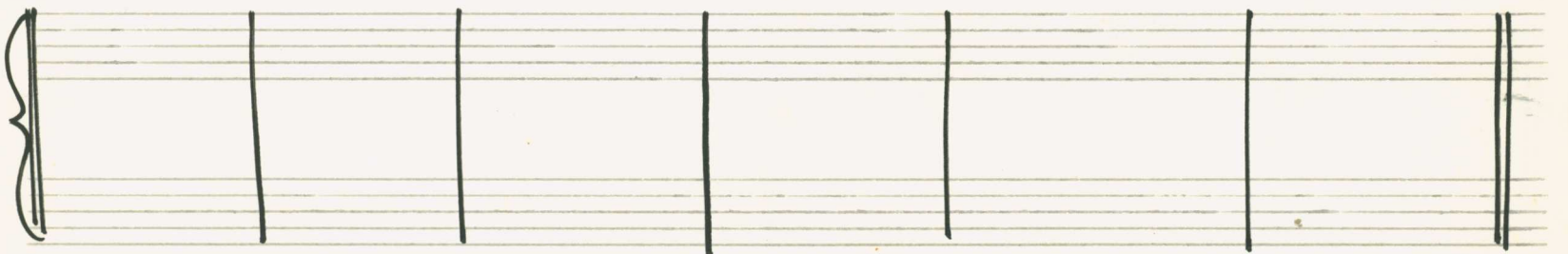
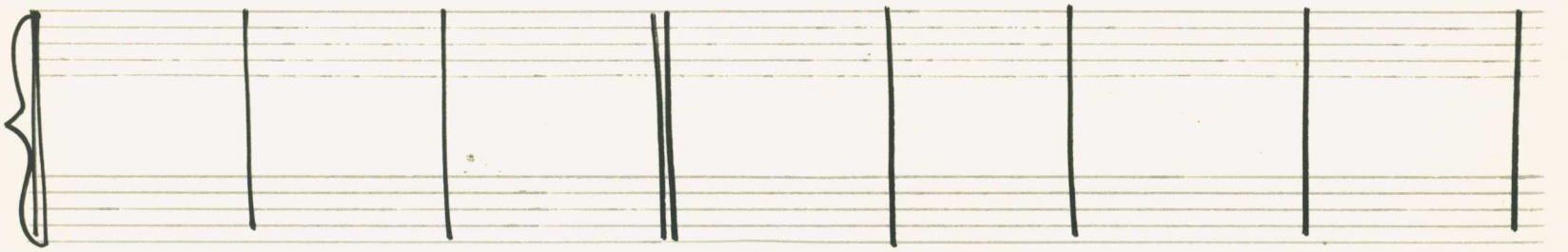
Handwritten musical score for the first system. It features a treble clef staff with a key signature of two flats and a 3/4 time signature. The notation includes a series of vertical lines and some rhythmic markings. Below the treble staff, there are two staves: the upper one contains a complex arrangement of notes and rests, and the lower one contains a series of notes with stems pointing downwards.

Handwritten musical score for the second system, continuing the notation from the first system. It includes a treble clef staff with a key signature of two flats and a 3/4 time signature. The notation is highly abstract, featuring a series of vertical lines and some rhythmic markings. Below the treble staff, there are two staves: the upper one contains a complex arrangement of notes and rests, and the lower one contains a series of notes with stems pointing downwards.

Handwritten musical score for the third system. The upper staff is labeled "ÜBERSAITEN STREICHEN" (Overstringed strings) and includes a "Pedal" marking with an arrow. The notation is highly abstract, featuring a series of vertical lines and some rhythmic markings. Below the upper staff, there are two staves: the upper one contains a complex arrangement of notes and rests, and the lower one contains a series of notes with stems pointing downwards. The system concludes with a "Klavier (Pedal bis)" marking.

(SCHLAGZEUG | Solo |)





(langsam) breit

SCHLAGZ.

Klavier

ORGEL

Handwritten musical score for the first system. It features three staves: Schlägel (drums), Klavier (piano), and Orgel (organ). The organ part is written in two staves with a 4/4 time signature. The notation includes various notes, accidentals (flats, sharps), and dynamic markings like 'ppp'. There are also some handwritten annotations like '33' and '79'.

Handwritten musical score for the second system, continuing the organ part from the first system. It features two staves with the same notation and dynamic markings as the first system.

Handwritten musical score for the third system. It features two staves with a grand diminuendo (gr. dim) and ritardando (rit....) marking. The system concludes with a final section marked 'ppp' and the instruction 'nimmt flüchte' (takes flight).

Temp I. sehr langsam) frei

(viel Vibrato - (mit eigenen Mikrophon - und Verstärkeranlage - mit Lautsprecher.....)

Handwritten musical notation for the first system. It features a treble clef, a 6/4 time signature, and a key signature of one sharp (F#). The notation includes notes with various dynamics such as *ppp* and *p*, and articulations like accents (^) and slurs. There are also some handwritten markings like *#9* and *b9* above notes.

Handwritten musical notation for the second system. The top staff shows a piano part with a wavy line and a dynamic marking of *pp*. The bottom staff shows a clarinet part with notes and a dynamic marking of *ppp*. There is a box labeled "Pedal-bis" with an arrow pointing to the clarinet part. Handwritten text between the staves reads: "klarinetz (in raschen Bewegungen ppp über Saiten streichen)".

Handwritten musical notation for the third system. The top staff shows a piano part with a wavy line and a dynamic marking of *pp*. The bottom staff shows a clarinet part with notes and a dynamic marking of *f*. There is also a dynamic marking of *pp* at the end of the system.

Handwritten musical notation for the fourth system. The top staff is labeled "Flöte" and the bottom staff is labeled "SCHL. 3.". Both staves show notes with dynamics like *pp* and *pppp*. The Flöte part ends with the instruction "verklungen lassen.....".