

Sonate 1971 (Jazz)

für

Flöte und Piano

Adolf Scherler

Notenheft

Sonate (Jazz) 1971

für Flöte und Piano

Adolf Scherbaum

Allievo (Moderato)

Teil ①

Flöte

Piano

①  
13  
26

Handwritten musical score for the first system. The top staff is in treble clef, showing a melodic line with various notes and rests. The bottom two staves are a grand staff for piano accompaniment, with chords and rhythmic patterns. Dynamic markings include 'f'.

Handwritten musical score for the second system. The notation continues with melodic and accompaniment parts. Dynamic markings include 'f' and 'dim'.

Handwritten musical score for the third system. A circled measure number '214 27' is written above the staff. The system concludes with a double bar line. Dynamic markings include '>' and 'f'.

Handwritten musical score for the first system. The top staff is for the flute, showing a melody with a key signature of one sharp (F#) and a 2/4 time signature. The bottom staff is for the piano, with a circled 'p' dynamic marking and the instruction 'cresc.'.

Handwritten musical score for the second system. The top staff continues the flute melody. The bottom staff shows piano accompaniment with various chordal textures and dynamics.

③ 15 28

Handwritten musical score for the third system. It begins with a circled '3' and measure numbers '15' and '28'. The top staff continues the flute melody. The bottom staff includes a circled 'p' dynamic marking and a fermata at the end.

Handwritten musical score for the first system. It consists of two staves: a treble clef staff and a grand staff (treble and bass clefs). The treble staff contains a melodic line with various ornaments, including accents (^) and slurs. A circled number '4' is written above the staff, and the numbers '16' and '29' are written to the right. The grand staff contains a piano accompaniment with chords and a dynamic marking 'ff'. A circled 'P' is also present in the grand staff. The system concludes with a double bar line.

Handwritten musical score for the second system, labeled 'Solo' at the beginning. It features a treble clef staff with a melodic line and a grand staff for piano accompaniment. The piano part includes chords with accidentals and dynamic markings. A circled 'P' is visible in the piano part. The system ends with a double bar line.

Handwritten musical score for the third system, continuing the piano accompaniment from the previous system. It consists of a grand staff with chords and dynamic markings. The system concludes with a double bar line.

5 17 30

6 18 31

Handwritten musical notation for the first system, featuring a treble and bass clef with various notes and rests. The word "dir" is written in the right hand.

Handwritten musical notation for the second system, including a circled "7" and the numbers "19" and "32" on the right side.

Handwritten musical notation for the third system, featuring a "Pedal" marking and a circled "pp" dynamic marking.



Handwritten musical score for the first system. The system consists of two staves: a single treble clef staff on top and a grand staff (treble and bass clefs) on the bottom. The top staff begins with a circled '8' and the number '20' to its right, and ends with a circled '8' and the number '33' to its right. The music features a melodic line with various accidentals (sharps, naturals) and slurs. The bottom staff contains a piano accompaniment with a 'Pedal' marking at the beginning. The system concludes with a double bar line and a fermata.

Handwritten musical score for the second system, consisting of two staves. The top staff begins with a circled '9' and the number '21' to its right. The music continues with a melodic line and piano accompaniment, including a 'Pedal' marking. The system ends with a double bar line and a fermata.

Handwritten musical score for the third system, consisting of two staves. The top staff begins with a circled '9' and the number '34' to its right. The music continues with a melodic line and piano accompaniment, including a 'Pedal' marking. The system ends with a double bar line and a fermata.

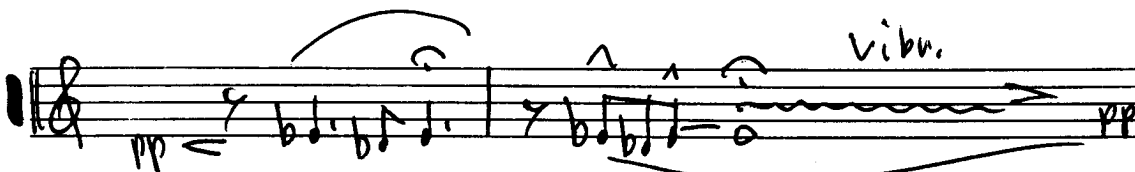
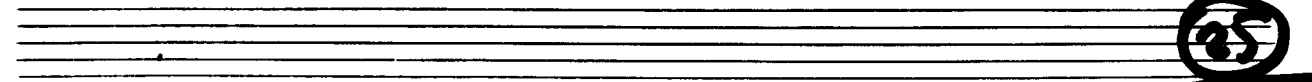
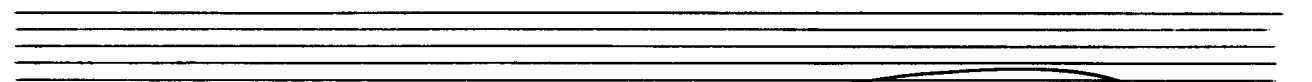
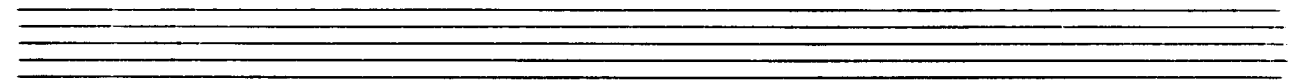
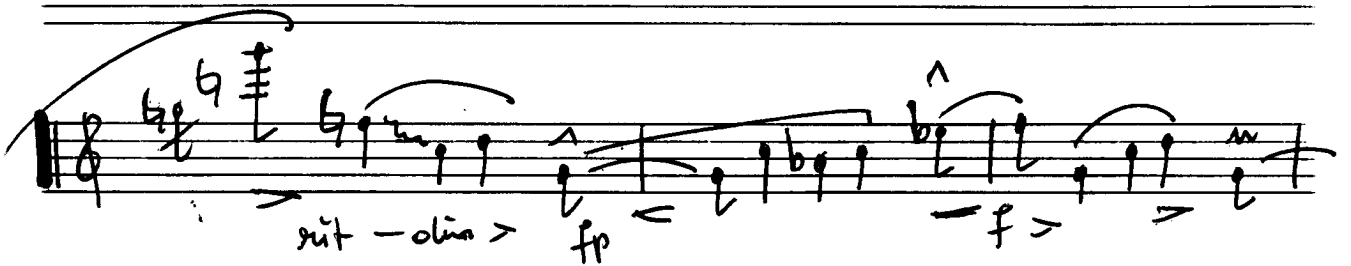
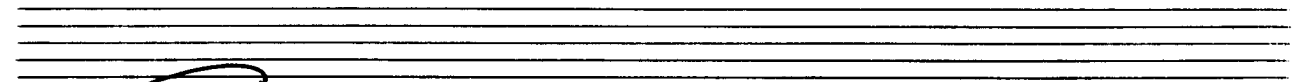
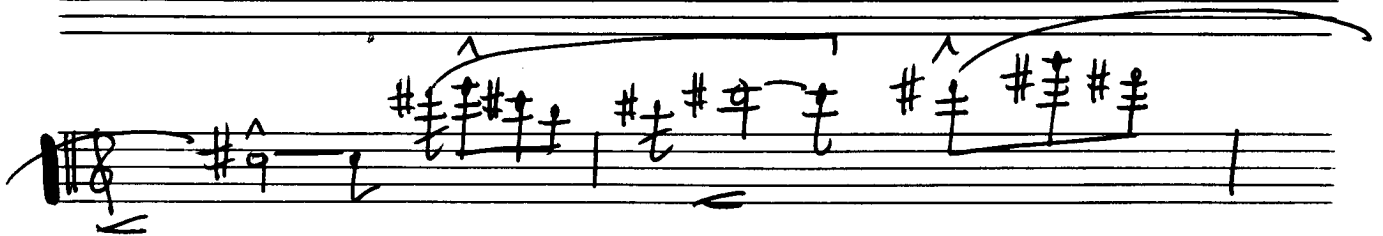
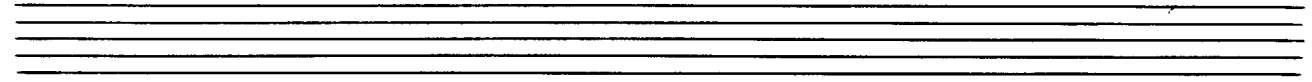
Handwritten musical score for the first system. The top staff is for the flute, showing a trill in the first measure followed by a melodic line. The bottom staff is for the piano, with a circled 'f' dynamic marking and a 'Pedal' instruction. A circled '3' indicates a triplet in the piano part.

Handwritten musical score for the second system. The top staff continues the flute melody. The bottom staff has a circled 'f' dynamic marking and a 'Pedal' instruction. A circled '10' is written in the upper right corner, with the numbers '22' and '35' written next to it.

Handwritten musical score for the third system, concluding with a 'CODA' box. The top staff features a long note with a fermata. The bottom staff includes a circled 'f' dynamic marking, a 'Pedal' instruction, and a circled 'p' dynamic marking. Measure numbers '23', '11', and '36' are written on the right side.

(2te x mit -----) D.C.

Flöte Solo (frei)



35  
D.C.  $\frac{4}{4}$  Terz  
al  
CODA

**CODA**

güt + dir.....

Handwritten musical score for the first system. The treble clef staff contains a melodic line with notes, rests, and accents. The bass clef staff contains a bass line with notes and rests. A dynamic marking 'p=' is present at the beginning.

37 38

Handwritten musical score for the second system. It continues the melodic and bass lines from the first system. The treble clef staff shows a continuation of the melodic phrase with various ornaments and dynamics. The bass clef staff shows corresponding harmonic support.

Handwritten musical score for the third system. The treble clef staff features a melodic line with dynamic markings 'fp' and 'pp'. The bass clef staff provides harmonic accompaniment with notes and rests.

(poco rit. ....) **39**

pp

3

3

3

3

frei..... **40**

pp

ppp

11

vibn.

Lunga

Lunga

# Sin pan

Langsam (frei)

Teil 2.

Handwritten musical score for the first system. It features a treble clef staff with a 4/4 time signature and a piano (p) dynamic marking. The melody consists of eighth and quarter notes with accents. The piano accompaniment includes a bass line with a 4/4 time signature and a piano (p) dynamic marking, featuring a sequence of chords and a melodic line with a slur.

Handwritten musical score for the second system. It continues the melody and piano accompaniment from the first system. The piano part includes a sequence of chords and a melodic line with a slur. The system ends with a circled number 44 and the number 46 written to the right.

Handwritten musical score for the third system. It continues the melody and piano accompaniment. The piano part includes a sequence of chords and a melodic line with a slur. The system ends with a circled number 44 and the number 46 written to the right.

Handwritten musical score for the first system, featuring a flute line and a piano accompaniment. The flute part has a long melodic line with slurs and accents. The piano part consists of chords and a bass line.

**breit.**

Handwritten musical score for the second system, starting with the instruction "breit." in a box. It continues with the flute and piano parts.

*legg. (frei - accel. — zurück — (rit + dim))*

**42**

**47**

**CODA**

**(p)**

Handwritten musical score for the third system, ending with a CODA section. It includes performance instructions like "legg. (frei - accel. — zurück — (rit + dim))" and dynamic markings like "(p)". Measure numbers 42 and 47 are circled.



breit

Handwritten musical score for the first system. It consists of a piano staff (bottom) and a flute staff (top). The piano staff has notes with stems and beams, and dynamic markings including 'ff'. The flute staff has notes with stems and beams, and dynamic markings including 'ff'. There are also some handwritten annotations like 'A' above notes.

Handwritten musical score for the second system. It consists of a piano staff (bottom) and a flute staff (top). The piano staff has notes with stems and beams, and dynamic markings including 'ff'. The flute staff has notes with stems and beams, and dynamic markings including 'ff'. There are also some handwritten annotations like 'A' above notes. A circled number '43' is written in the top right corner.

Handwritten musical score for the third system. It consists of a piano staff (bottom) and a flute staff (top). The piano staff has notes with stems and beams, and dynamic markings including 'ff'. The flute staff has notes with stems and beams, and dynamic markings including 'ff'. There are also some handwritten annotations like 'A' above notes. The word 'au' is written below the piano staff.

(*dim. rit...*)

44

(*frei*)

(*poco rit...*)

45

2/2+

*al*

*coda*

**CODA** frei - sehr ruhig - sit - dem.

Handwritten musical score for the first system. It consists of two staves. The upper staff is in treble clef and contains a melodic line with notes, slurs, and a vibrato marking "vibr.". The lower staff is in bass clef and contains a piano accompaniment with chords and a "Pedal" marking. Dynamics include "pp" and "p".

Handwritten musical score for the second system. It consists of two staves. The upper staff is in treble clef and contains a melodic line with notes, slurs, and a vibrato marking "vibr.". The lower staff is in bass clef and contains a piano accompaniment with chords and a "Pedal" marking. Dynamics include "pp" and "p". The tempo marking "Lento" is present. A circled number "48" is written on the right side of the system.

Teil 3

Presto (Prestissimo!)

Handwritten musical score for the first system, measures 1-4. The piano part starts with a forte (f) dynamic and a piano (pp) dynamic, followed by a crescendo (cresc.) marking. The flute part has a whole rest.

Handwritten musical score for the second system, measures 5-8. The piano part features complex chordal textures with various dynamics and accents. The flute part has a whole rest.

49

Handwritten musical score for the third system, measures 9-12. The piano part continues with complex textures, including a fortissimo (ff) dynamic. The flute part has a whole rest.

57

Handwritten musical score for the first system. The treble clef staff contains a melodic line with slurs and accents. The grand staff below it shows piano accompaniment with chords and bass lines. The bass line includes notes such as G, Bb, and G.

Empty musical staves for the first system.

Handwritten musical score for the second system. The treble clef staff continues the melodic line. The grand staff shows piano accompaniment with chords containing sharps and bass notes like G and G#.

Empty musical staves for the second system.

Handwritten musical score for the third system. The treble clef staff continues the melodic line. The grand staff shows piano accompaniment with chords containing flats and bass notes like G and Gb. A circled number '50' and the number '58' are present on the right side of the system.

Empty musical staves for the third system.

Handwritten musical score for the first system. The top staff is for the flute, and the bottom two staves are for the piano. The flute part begins with a dynamic marking  $f=$  and includes accents (^) and slurs. The piano accompaniment also starts with  $f=$  and features slurs and accents.

Handwritten musical score for the second system. The flute part has a dynamic marking  $ff=$  and shows a melodic line with many sharps. The piano accompaniment includes slurs and accents.

Handwritten musical score for the third system. The flute part has a dynamic marking  $ff$  and shows a melodic line with many sharps. The piano accompaniment includes slurs and accents. A box containing the number 59 is visible at the bottom right of the system.

Handwritten musical score for the first system. The treble clef staff contains a melodic line with a key signature of one sharp (F#) and a common time signature. The piano accompaniment is written in a grand staff (treble and bass clefs) with chords, accents (^), and slurs.

Handwritten musical score for the second system. The treble clef staff continues the melodic line with chromatic movement and various accidentals. The piano accompaniment continues with complex chordal textures, including some double flats (bb) in the bass line.

Handwritten musical score for the third system, concluding the piece. The treble clef staff features a final melodic flourish. The piano accompaniment ends with sustained chords. A large bracket on the right side of the system is labeled "52" and "60".

Piano Solo

53

Handwritten musical notation for the first system, measures 53-56. The system consists of two staves. The upper staff is in treble clef and contains a melodic line with eighth-note patterns and slurs. The lower staff is in bass clef and contains a harmonic accompaniment with chords and some melodic fragments. A double bar line is present at the end of measure 56.

61

Handwritten musical notation for the second system, measures 57-60. The system consists of two staves. The upper staff continues the melodic line with various rhythmic patterns and slurs. The lower staff provides harmonic support with chords and occasional melodic lines. A double bar line is present at the end of measure 60.

Handwritten musical notation for the third system, measures 61-64. The system consists of two staves. The upper staff features a melodic line with a triplet of eighth notes in measure 63. The lower staff contains a complex harmonic accompaniment with many beamed notes and chords. A double bar line is present at the end of measure 64.

Handwritten musical notation for the fourth system, measures 65-68. The system consists of two staves. The upper staff continues the melodic line with eighth-note patterns and slurs. The lower staff provides harmonic support with chords and melodic fragments. A double bar line is present at the end of measure 68.



54 62

55

CODA

63

Handwritten musical score for the first system. The upper staff (treble clef) contains a melodic line with a dynamic marking *ff > dim*. The lower staff (bass clef) contains a piano accompaniment with a dynamic marking *f > dim*. The music is in 2/4 time and features a key signature of one sharp (F#).

Handwritten musical score for the second system. The upper staff (treble clef) continues the melodic line with a dynamic marking *ff >*. The lower staff (bass clef) continues the piano accompaniment with a dynamic marking *f >*. The music remains in 2/4 time and one sharp.

Handwritten musical score for the third system. The upper staff (treble clef) features a melodic line with a dynamic marking *pp >*. The lower staff (bass clef) features a piano accompaniment with a dynamic marking *pp >*. The music is in 2/4 time and one sharp. The system concludes with a double bar line, a circled *Da.*, a boxed *CODA*, and the number *56* written below the staff.

**CODA** (noch steigern) (aber immer schwächer werden) bis pp  
 diese 8 Takte mehrmals wiederholen! (32 Takte)

**64 65**

