

790

Notenheft

4 Stücke für

Flöte (Altflöte) und Oboe

und Harfe — Harf (Scherbaum 832)

(nach modernen Dichtungen

afrikanischer Völker

beider Hemisphären)

1. Glaube (: Glaube ist ein Baum

Er wächst — in der Wüste.

Glaube lebt — in der Hoffnung — vergeblich

zuweilen — daß Gott den Regen schickt —

Glaube ist zärtliches Vertrauen

vergeblich zuweilen.

2. (Madripal)

Aus deinem Händchen tropfen — die Nügel — eine

Traube von zehn braunen Beeren. Haut.

Fleisch verbräunten ~~Stammes~~ Stammes —

der, wenn er im Spiegel keuert —

die zarten Algen des Grundes versengt.

31. Zuckerrohr:

Neger — in den Zuckerrohrfeldern —

Weißer — über den Zuckerrohrfeldern —

Erde — unter den Zuckerrohrfeldern —

Blut — das aus uns fließt.

41. Die Zeit der Qualen: —

Der Weiße hat meinen Vater getötet,
mein Vater war stolz.

Der Weiße hat meine Mutter geschändet,
meine Mutter war schön.

Der Weiße hat meinen Bruder unter die
Sonne der Straßen gekrümmt —
mein Bruder war stark.

Der Weiße hat seine geröteten Hände —
gerötet von schwarzem Blut,
mir zugewandt —
mit Herrenstimme:

// He Boy! Einen Kraben, ein Handtuch
und Wasser!

(Betonungen sehr genau einhalten -
(Akzente) - um einen Jazzcharakter
zu vermitteln.)

1

ruhig

Flöte

Oboe

PIANO

Handwritten musical score for the first system. It consists of three staves. The top staff is for the flute, the middle for a woodwind instrument (likely oboe), and the bottom for piano accompaniment. The music is in a key with one sharp (F#) and a 4/4 time signature. The flute part begins with a quarter note G4, followed by a half note A4, and then a quarter note B4. The woodwind part has a whole rest. The piano accompaniment starts with a half note G3, followed by a half note A3. There are various dynamics and accents throughout the system.

Two empty musical staves, one for the flute and one for the woodwind instrument, corresponding to the second system.

Handwritten musical score for the second system. It continues the three-staff arrangement. The flute part has a quarter note C5, followed by a quarter note B4, and then a quarter note A4. The woodwind part has a quarter note G4, followed by a quarter note A4, and then a quarter note B4. The piano accompaniment has a half note G3, followed by a half note A3. There are various dynamics and accents throughout the system.

Two empty musical staves, one for the flute and one for the woodwind instrument, corresponding to the third system.

Two empty musical staves, one for the flute and one for the woodwind instrument, corresponding to the fourth system.

Two empty musical staves, one for the flute and one for the woodwind instrument, corresponding to the fifth system.

Handwritten musical score for the first system, consisting of three staves. The top staff contains a melodic line with eighth and sixteenth notes, some with accents and slurs. The middle staff has rests followed by a few notes with a dynamic marking of *f*. The bottom staff features a piano accompaniment with chords and moving lines, marked with *ff*. The system concludes with a double bar line.

Handwritten musical score for the second system, also consisting of three staves. The top staff continues the melodic line with slurs and accents. The middle staff has rests and notes, with a dynamic marking of *mf*. The bottom staff continues the piano accompaniment with chords and moving lines. The system concludes with a double bar line.

Handwritten musical score for the first system, consisting of three staves. The top staff contains a melodic line with notes and rests, marked with a circled 'p' and 'pp'. The middle staff is mostly empty with some rests. The bottom staff contains a piano accompaniment with chords and moving lines, also marked with 'p' and 'pp'. There are various musical notations such as accents, slurs, and dynamic markings throughout the system.

(poco rit)

Tempo 1

Handwritten musical score for the second system, continuing the three-staff format. The top staff has a few notes and rests. The middle staff has a melodic line with notes and rests, marked with a circled 'p'. The bottom staff has a piano accompaniment with notes and rests, also marked with a circled 'p'. The system concludes with a few final notes and rests on all staves.

Handwritten musical score for the first system. It consists of three staves. The top staff has a treble clef and contains a series of notes with a slur and a circled 'p' dynamic marking. The middle staff has a treble clef and contains a series of notes with a slur and a circled 'p' dynamic marking. The bottom staff has a bass clef and contains a series of notes with a slur and a circled 'p' dynamic marking. There are also some handwritten annotations and a circled 'p' in the middle of the system.

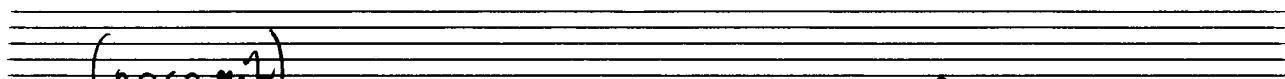
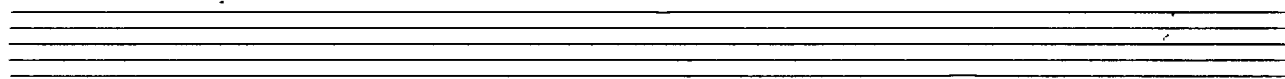
Handwritten musical score for the second system. It consists of three staves. The top staff has a treble clef and contains a series of notes with a slur and a circled 'p' dynamic marking. The middle staff has a treble clef and contains a series of notes with a slur and a circled 'p' dynamic marking. The bottom staff has a bass clef and contains a series of notes with a slur and a circled 'p' dynamic marking. There are also some handwritten annotations and a circled 'p' in the middle of the system.

Handwritten musical score for the first system. It consists of three staves. The top staff has a treble clef and contains several measures with notes, rests, and dynamic markings such as *f* and *mf*. The middle staff has a treble clef and contains notes with accents and slurs. The bottom staff has a bass clef and contains notes with accents and slurs. There are also some circled symbols and other markings throughout the system.

Handwritten musical score for the second system. It consists of three staves. The top staff has a treble clef and contains notes with slurs and dynamic markings like *ff*. The middle staff has a treble clef and contains notes with slurs and dynamic markings like *ff*. The bottom staff has a bass clef and contains notes with slurs and dynamic markings like *ff*. There are also some circled symbols and other markings throughout the system.

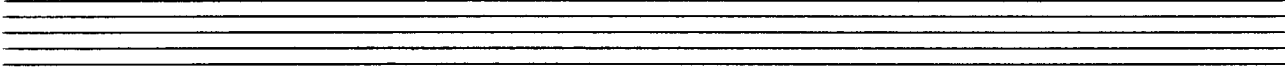
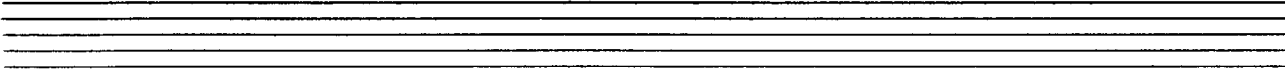
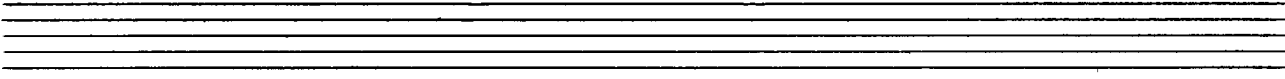
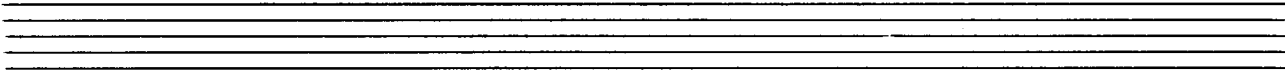
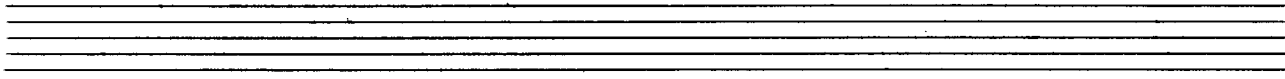
Handwritten musical score for the first system. It consists of three staves. The top staff has a treble clef and contains a melodic line with notes and rests, including a circled 'mf' dynamic marking. The middle staff has a treble clef and contains a melodic line with notes and rests. The bottom staff has a bass clef and contains a bass line with notes and rests. There are various musical notations such as slurs, accents, and dynamic markings throughout the system.

Handwritten musical score for the second system. It consists of three staves. The top staff has a treble clef and contains a melodic line with notes and rests, including a circled 'p' dynamic marking. The middle staff has a treble clef and contains a melodic line with notes and rests. The bottom staff has a bass clef and contains a bass line with notes and rests. There are various musical notations such as slurs, accents, and dynamic markings throughout the system.



(poco rit)

(frei)



2

(Bluestempo) langsam

Handwritten musical score for the first system, measures 1-4. The score is written on five staves. The top staff is for the flute, the second for the oboe, the third for the harp, and the bottom two for the piano. The flute part features a melodic line with slurs and accents, starting with a quarter rest and a half note. The harp part consists of chords with rhythmic slashes. The piano part has whole notes. A circled 'p' is written in the harp staff.

Handwritten musical score for the second system, measures 5-8. The score continues on five staves. The flute part continues with a melodic line, including slurs and accents. The harp part continues with chords and rhythmic slashes. The piano part continues with whole notes. The notation is consistent with the first system.

Handwritten musical score for the first system, consisting of four staves. The notation is dense and includes various musical symbols such as slurs, accents (^), and dynamic markings (f). The first staff has a large slur over the first two measures and a dynamic marking 'f'. The second staff has a dynamic marking 'f' and a slur over the last two measures. The third and fourth staves contain complex rhythmic and melodic patterns with many notes and rests.

Handwritten musical score for the second system, consisting of four staves. The notation is dense and includes various musical symbols such as slurs, accents (^), and dynamic markings (ff). The first staff has a dynamic marking 'ff' and a slur over the first two measures. The second staff has a dynamic marking 'ff' and a slur over the last two measures. The third and fourth staves contain complex rhythmic and melodic patterns with many notes and rests.

Handwritten musical score for the first system, consisting of three staves. The top staff contains a melodic line with a long slur and accents, starting with a dynamic marking of **fp**. The middle staff has a series of notes with stems, some with a circled **p** and a double-headed arrow (< >) below them. The bottom staff features a bass line with notes and rests, including a circled **mp** marking. The system concludes with a double bar line and a vertical ellipsis.

(Prest.) Tempo

Handwritten musical score for the second system, also consisting of three staves. The top staff begins with a dynamic marking of **pp** and includes a drawing of a crown. The middle staff has notes with stems and a circled **p** marking. The bottom staff features a bass line with notes and rests, including a circled **pp** marking. The system concludes with a double bar line.

Handwritten musical score for the first system. It consists of two staves: a flute staff (top) and a piano accompaniment staff (bottom). The flute part begins with a quarter rest, followed by a series of eighth and sixteenth notes with slurs and accents. The piano accompaniment features chords with slurs and some rhythmic markings.

Handwritten musical score for the second system. The flute part continues with slurs and accents, ending with a flourish. The piano accompaniment includes dynamic markings such as *mp* and *f*, along with slurs and accents. The system concludes with a final flourish in the flute part.

Handwritten musical score for the first system, consisting of four staves. The notation includes various accidentals (flats, naturals, sharps), slurs, and dynamic markings such as ff and p . The first staff has a large slur over the first two measures. The second staff has a slur over the last two measures. The third and fourth staves contain chordal and melodic fragments with accents and slurs.

Handwritten musical score for the second system, consisting of four staves. The notation includes various accidentals, slurs, and dynamic markings such as fp , p , and mp . The first staff has a large slur over the first two measures. The second staff has a slur over the last two measures. The third and fourth staves contain chordal and melodic fragments with accents and slurs.

Handwritten musical score for the first system, consisting of three staves. The top staff contains a melodic line with notes and rests. The middle staff contains a more complex melodic line with many notes and slurs. The bottom staff contains a bass line with notes and rests. There are various dynamic markings and slurs throughout the system.

Lento

Handwritten musical score for the second system, consisting of three staves. The top staff contains a melodic line with notes and rests. The middle staff contains a complex melodic line with many notes and slurs. The bottom staff contains a bass line with notes and rests. There are various dynamic markings, including a circled 'pp' and '(p)'. A guitar part is indicated with '(git)'.

Handwritten musical score for four staves. The first staff contains notes G#4 and G4 with an accent (>) and dynamic marking pp. The second staff contains a whole note G4. The third and fourth staves are marked with a wavy line and contain notes G#4, G4, F#4, E4, D4, C4 with an accent (>) and dynamic marking ppp. The word "Lunga" is written above the third staff. A wavy line with a double exclamation mark "!!" is drawn on the right side of the first two staves.

3

Handwritten musical score for the first system. It consists of five staves. The top staff is a treble clef with a melodic line starting on a whole note, followed by a series of eighth notes and sixteenth notes, some with slurs and accents. The word "frei" is written above the first few notes, and "coll" is written at the end of the line. The second staff is a treble clef with a few notes. The third and fourth staves are a grand staff (treble and bass clefs) with a bracket on the left and rhythmic notation consisting of vertical lines and circles. The fifth staff is a grand staff with a few notes.

Handwritten musical score for the second system, identical in structure to the first. It consists of five staves. The top staff is a treble clef with a melodic line. The second staff is a treble clef with a few notes. The third and fourth staves are a grand staff with a bracket on the left and rhythmic notation. The fifth staff is a grand staff with a few notes.

(mit - dem)

Lento

breit

frei

Handwritten musical score for the first system. It consists of three staves. The top staff has a treble clef and contains a melodic line with notes, rests, and a dynamic marking of \hat{p} . The middle staff has a treble clef and contains a melodic line with notes and rests. The bottom staff has a bass clef and contains a bass line with notes and rests. There are some handwritten annotations and a large bracket spanning across the staves.

Handwritten musical score for the second system. It consists of three staves. The top staff has a treble clef and contains a melodic line with notes, rests, and a dynamic marking of \hat{p} . The middle staff has a treble clef and contains a melodic line with notes, rests, and a dynamic marking of \hat{p} . The bottom staff has a bass clef and contains a bass line with notes and rests. There are some handwritten annotations and a large bracket spanning across the staves. The word "mit dir" is written below the middle staff.

Lento

Handwritten musical score for the first system. It consists of four staves. The top two staves are in treble clef, and the bottom two are in bass clef. The first measure shows a rest in the top two staves and a melodic line in the bottom two staves starting with a *mp* dynamic. The second measure is a full bar rest. The third measure begins with a *f* dynamic and features a complex rhythmic pattern with triplets and a slur. The bottom two staves have a circled *f* dynamic and a complex rhythmic pattern with triplets.

breit

frei

Handwritten musical score for the second system. It consists of four staves. The top two staves are in treble clef, and the bottom two are in bass clef. The first measure shows a rest in the top two staves and a melodic line in the bottom two staves starting with a *ff* dynamic. The second measure is a full bar rest. The third measure begins with a *ff* dynamic and features a complex rhythmic pattern with slurs and accents. The bottom two staves have a circled *ff* dynamic and a complex rhythmic pattern with slurs and accents.

Flöte (frei)

OBOE frei

Flöte

Lento (groß. gut - dünn)

4

Mod. assai

Handwritten musical score for the first system, measures 1-4. The score is written on three staves. The top staff is in treble clef and contains a melodic line with slurs and accents. The middle staff contains rests. The bottom staff is in bass clef and contains chords and textures, including a circled 'f' in the first measure.

Handwritten musical score for the second system, measures 5-8. The score is written on three staves. The top staff is in treble clef and contains a melodic line with slurs and accents. The middle staff contains rests. The bottom staff is in bass clef and contains chords and textures, including a circled 'f' in the first measure.

Handwritten musical score for the first system, consisting of four staves. The notation includes complex melodic lines with slurs and accents, and harmonic accompaniment. Dynamic markings such as **ff** are present. The key signature is one flat (B-flat).

Handwritten musical score for the second system, continuing the piece with similar notation and dynamic markings. The notation includes complex melodic lines with slurs and accents, and harmonic accompaniment. Dynamic markings such as **ff** are present. The key signature is one flat (B-flat).

Empty musical staves for the third system, consisting of four staves.

Handwritten musical score for the first system, consisting of four staves. The notation is dense and includes various rhythmic values, slurs, and accents. The first staff has a treble clef and a key signature of one sharp (F#). The second staff has a treble clef. The third and fourth staves have bass clefs. The music is divided into four measures by vertical bar lines.

sehr frei (sehr langsam)

(ALT Flöte!)

Handwritten musical score for the second system, consisting of four staves. The notation includes slurs, accents, and dynamic markings. The first staff has a treble clef and a key signature of one sharp (F#). The second staff has a treble clef. The third and fourth staves have bass clefs. The music is divided into two measures by a vertical bar line. Dynamic markings include *p* (piano) and *ff* (fortissimo).

Handwritten musical score for the first system. The top staff is for the flute, showing a melodic line with dynamic markings *pp*, *f*, and *ff*, and various articulations including accents and slurs. The bottom two staves represent the piano accompaniment, with chords and slurs.

Handwritten musical score for the second system. The top staff is for the flute, with dynamic markings *pp* and *f*, and articulation. The bottom two staves are for the piano accompaniment.

Handwritten musical score for the third system. The top staff is for the flute, with dynamic markings *p* and *f*, and articulation. The bottom two staves are for the piano accompaniment.

(Flöte) (ALT)

(OBOE)

pp

f

(p)

ff

(p)

f

rit

(Flöte) (ALT)

ff

(OBOE)

pp

ff

rit

pp

Staccato

Tempo 1 Mod. assai

(Normale) Rate

Handwritten musical score for the first system, measures 1-4. The notation includes a treble clef staff with a melodic line of eighth notes, a bass clef staff with a bass line, and a grand staff with piano accompaniment. A circled 'f' dynamic marking is present in the piano part.

Handwritten musical score for the second system, measures 5-8. The notation continues the melodic and harmonic development from the first system, with a circled 'f' dynamic marking in the piano part.

Handwritten musical score for the third system, measures 9-12. The notation concludes the piece with a final melodic flourish and a circled 'ff' dynamic marking in the piano part.

The image shows a handwritten musical score for flute and harp, organized into three systems. Each system consists of a flute staff (top) and a harp staff (bottom). The notation is dense and includes various musical symbols such as notes, rests, accidentals, and dynamic markings.

- System 1:** The flute staff begins with a rest, followed by a series of notes with a slur and an accent (^). The harp staff has a rest followed by a series of notes with a slur and an accent (^). The notation is complex, with many accidentals and slurs.
- System 2:** The flute staff continues with a series of notes, including a slur and an accent (^). The harp staff has a rest followed by a series of notes with a slur and an accent (^). The notation is complex, with many accidentals and slurs.
- System 3:** The flute staff begins with a series of notes with a slur and an accent (^), followed by a rest and then a series of notes with a slur and an accent (^). The harp staff has a rest followed by a series of notes with a slur and an accent (^). The notation is complex, with many accidentals and slurs.

accel, (4x) ||:||

The image shows a handwritten musical score for three systems, each consisting of four staves. The notation is in a key with one sharp (F#) and a 3/4 time signature. The first system has a circled 'pp' in the piano part. The second system has a circled 'ff' in the piano part. The third system has a circled 'ff' in the piano part. The notation is dense and expressive, with many slurs and accents.

Handwritten musical score for four staves. The first staff has a treble clef and a key signature of one sharp (F#). It contains notes with stems and beams, and a circled *mf* dynamic marking. The second staff has a treble clef and a key signature of one sharp (F#), with notes and stems. The third staff has a treble clef and a key signature of one sharp (F#), with notes and stems. The fourth staff has a bass clef and a key signature of one sharp (F#), with notes and stems. The score is divided into two measures by a vertical bar line. Handwritten annotations include *frei* and *Guss* in the first measure, and *frei/ ad libitum*, *ff*, *robato*, and *(frei)* in the second measure. There are also some scribbles and a wavy line on the right side of the second measure.

Ten empty musical staves for notation.