

L. V. BEETHOVEN



W. A. MOZART



NOTENHEFT

F. SCHUBERT



J. HAYDN



J. STRAUSS




Nr. 408

Studien für Flöte

1961 Adolf Scherbaum

Die Etuden können (langsam) sehr rasch)
staccato — legato —
teilweise gebunden —
" gestoßen —
(gespielt werden.) —

(auch transponiert (kleine Sek.)
große " "
Terz "
Quint "
Sexta)

(Atemzeichen dem Spieler
überlassen)

1.



2.

senza legato

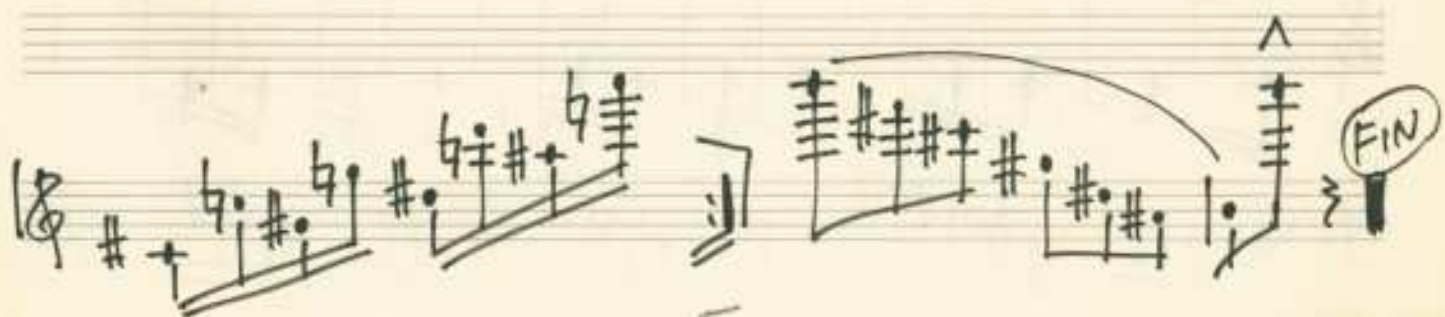
Handwritten musical notation on a five-line staff. It begins with a treble clef, a 2/4 time signature, and a key signature of one sharp (F#). The first measure contains a triplet of eighth notes: F#4, G4, and A4. The second measure contains a triplet of eighth notes: B4, C5, and D5. The third measure contains a quarter note E5. The fourth measure contains a quarter note F#5. The fifth measure contains a quarter note G5. The sixth measure contains a quarter note A5. The seventh measure contains a quarter note B5. The eighth measure contains a quarter note C6. The piece ends with a double bar line.

Handwritten musical notation on a five-line staff. It begins with a treble clef and a key signature of one sharp (F#). The first measure contains a quarter note F#4. The second measure contains a quarter note G4. The third measure contains a quarter note A4. The fourth measure contains a quarter note B4. The fifth measure contains a quarter note C5. The sixth measure contains a quarter note D5. The seventh measure contains a quarter note E5. The eighth measure contains a quarter note F#5. The piece ends with a double bar line.

Handwritten musical notation on a five-line staff. It begins with a treble clef and a key signature of one sharp (F#). The first measure contains a quarter note F#4. The second measure contains a quarter note G4. The third measure contains a quarter note A4. The fourth measure contains a quarter note B4. The fifth measure contains a quarter note C5. The sixth measure contains a quarter note D5. The seventh measure contains a quarter note E5. The eighth measure contains a quarter note F#5. The piece ends with a double bar line.

Handwritten musical notation on a five-line staff. It begins with a treble clef and a key signature of one sharp (F#). The first measure contains a quarter note F#4. The second measure contains a quarter note G4. The third measure contains a quarter note A4. The fourth measure contains a quarter note B4. The fifth measure contains a quarter note C5. The sixth measure contains a quarter note D5. The seventh measure contains a quarter note E5. The eighth measure contains a quarter note F#5. The piece ends with a double bar line.

Handwritten musical notation on a five-line staff. It begins with a treble clef and a key signature of one sharp (F#). The first measure contains a quarter note F#4. The second measure contains a quarter note G4. The third measure contains a quarter note A4. The fourth measure contains a quarter note B4. The fifth measure contains a quarter note C5. The sixth measure contains a quarter note D5. The seventh measure contains a quarter note E5. The eighth measure contains a quarter note F#5. The piece ends with a double bar line.



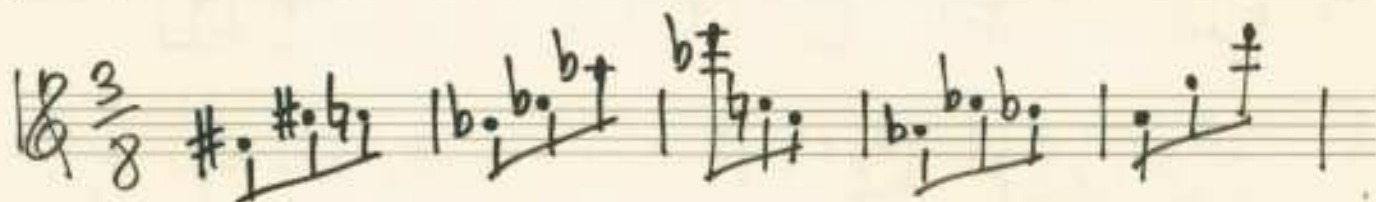
3.





4

Empire stacc.



Handwritten musical notation on a five-line staff in treble clef. It features a sequence of notes with various accidentals (sharps, naturals, flats) and stems. The piece concludes with a double bar line and a circled "FIN" written above the staff.

Handwritten musical notation on a five-line staff in treble clef. It shows a series of notes with accidentals, including a double sharp and a double flat. The notation is somewhat dense with many accidentals.

Handwritten musical notation on a five-line staff in treble clef. It continues the sequence of notes with various accidentals, including a double flat and a double sharp.

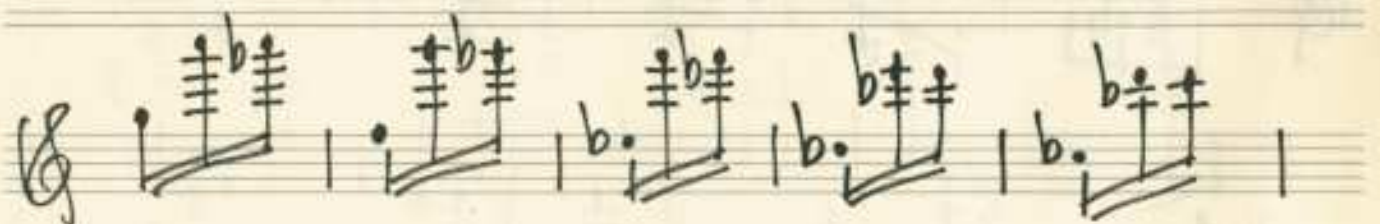
Handwritten musical notation on a five-line staff in treble clef. It features a series of notes with stems and various accidentals, including a double sharp.

Handwritten musical notation on a five-line staff in treble clef. It shows notes with stems and various accidentals, including a double sharp and a double flat.

Handwritten musical notation on a five-line staff in treble clef. It concludes with a double bar line, a circled "FIN", and the handwritten text "D.C. al" written above the staff.

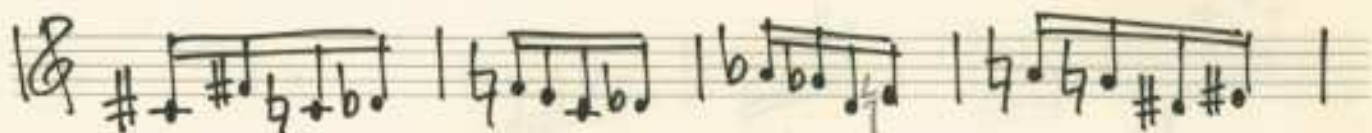
1+ leg.
2+ stacc.
3+ leg.

5.



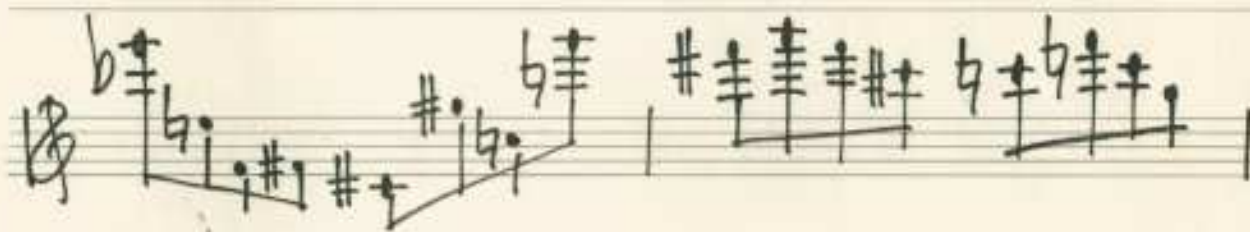
6.

Alleg.
2. stacc.



leg.





3x

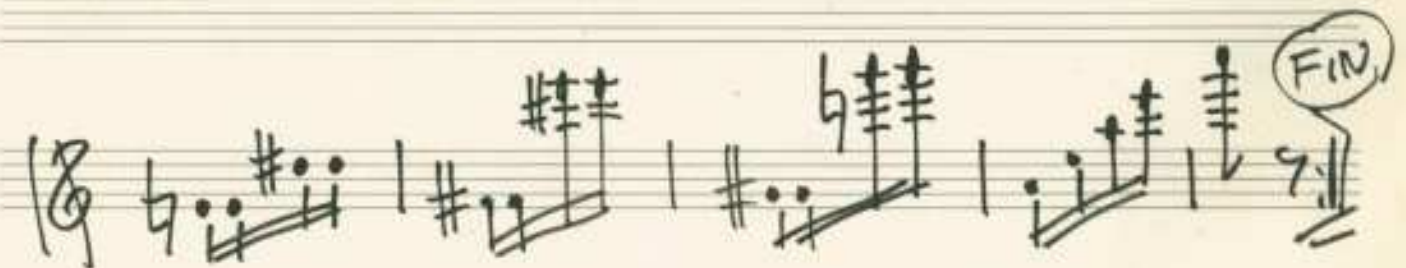
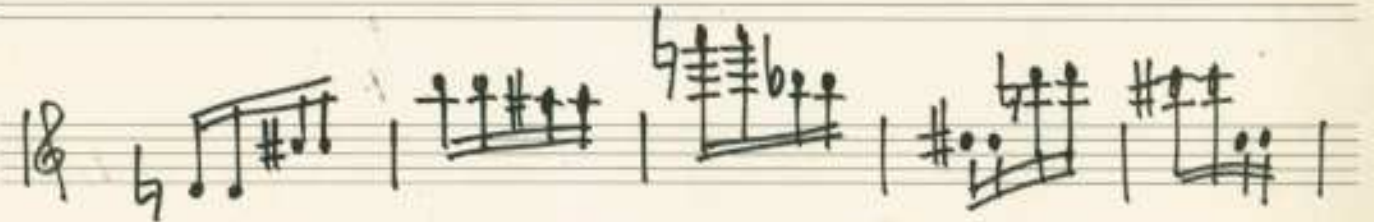


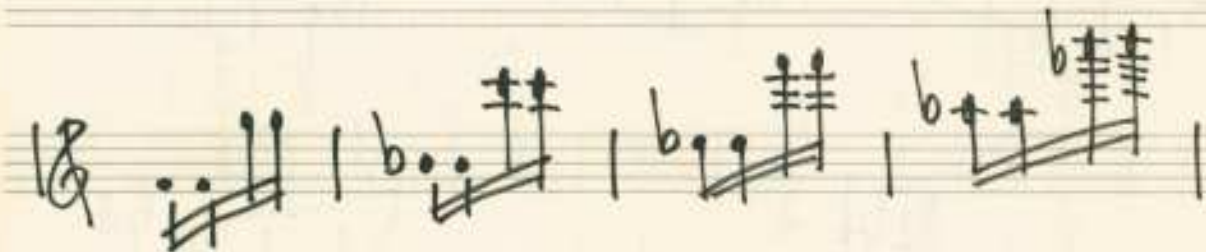
1967
Adolf Scherbaum

7 Studien für Flöte

Band. 2.

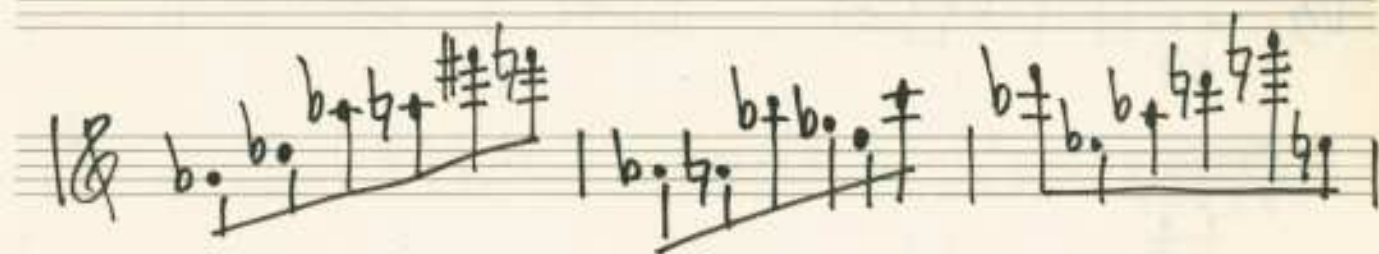
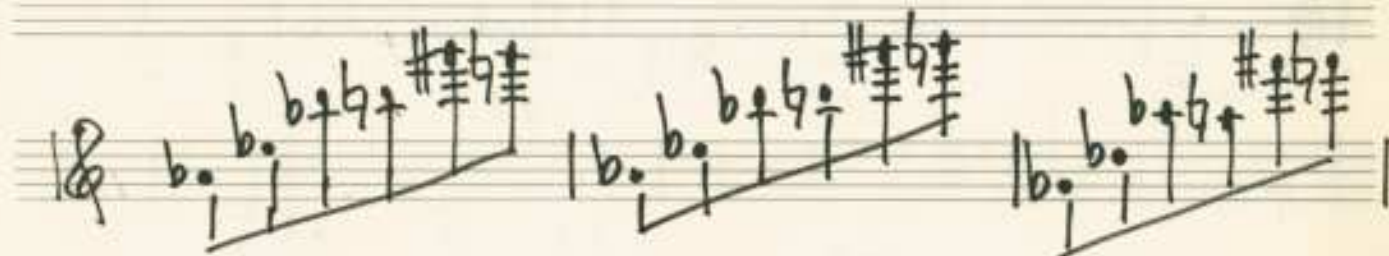
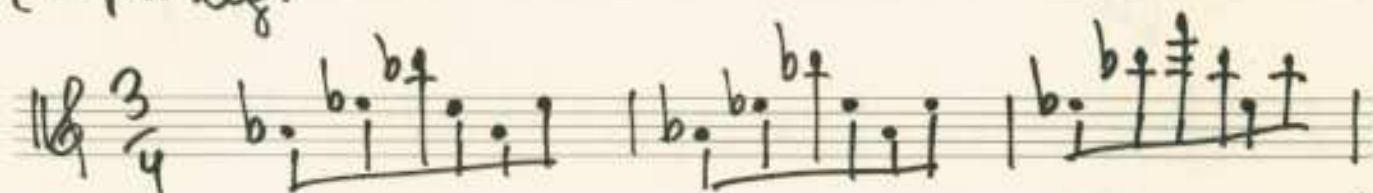
1.

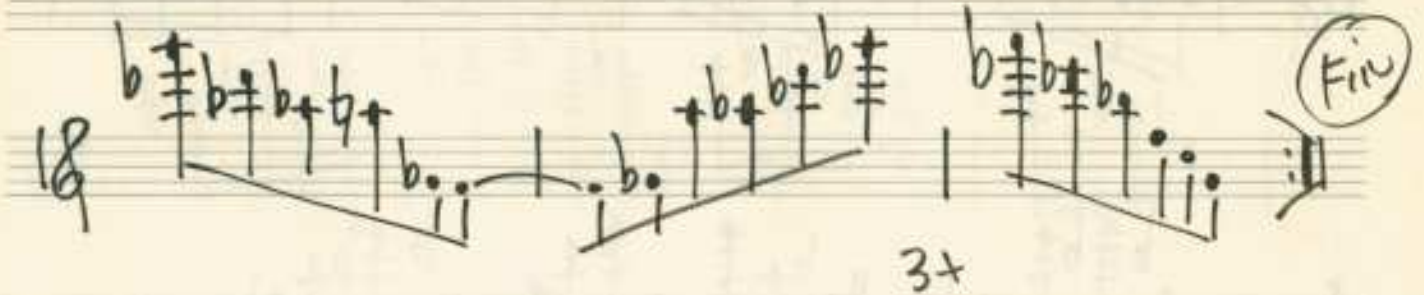
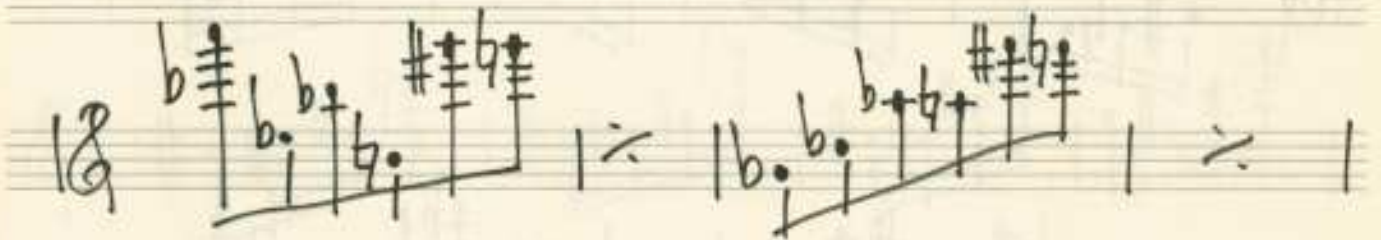




2.

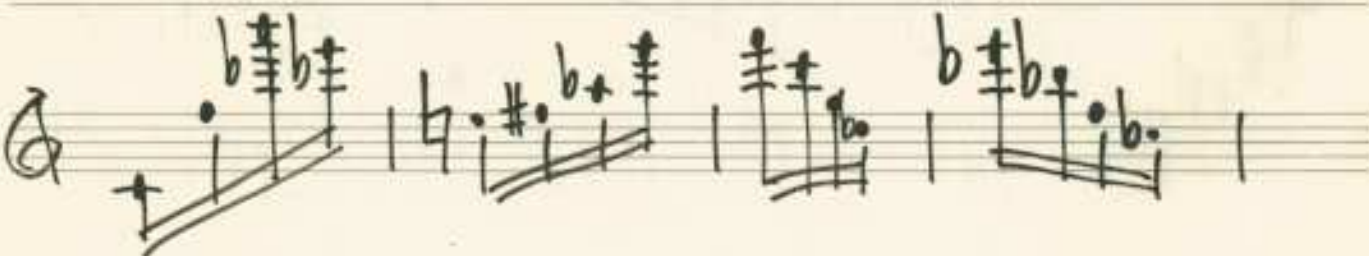
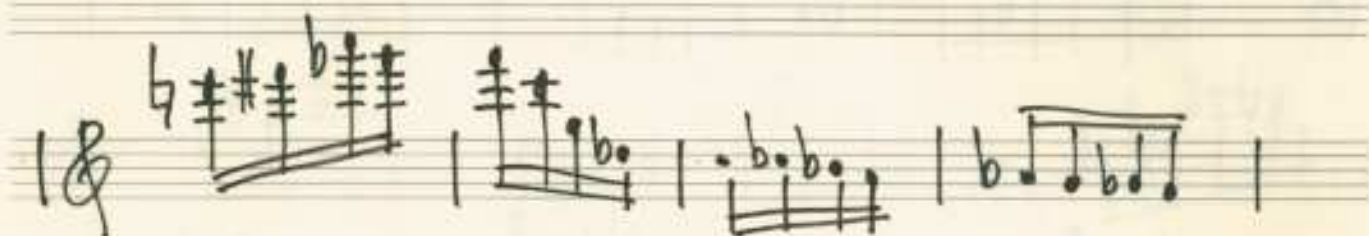
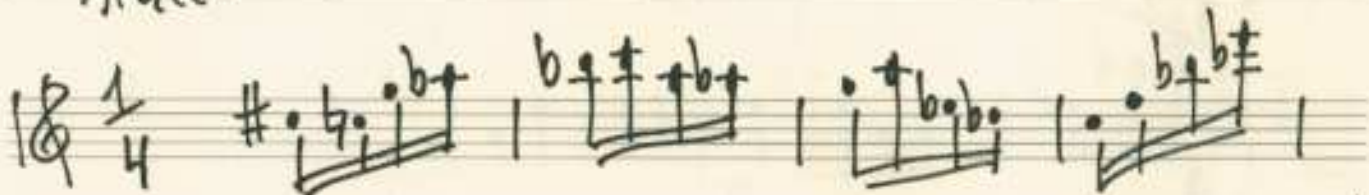
Tempo leg.





3.

stacc.



Handwritten musical notation on a single staff, featuring a treble clef and a 7/8 time signature. The notation includes various accidentals (sharps, flats, naturals) and rests.

Handwritten musical notation on a single staff, featuring a treble clef and a 7/8 time signature. The notation includes various accidentals and rests.

Handwritten musical notation on a single staff, featuring a treble clef and a 7/8 time signature. The notation includes various accidentals and rests.

Handwritten musical notation on a single staff, featuring a treble clef and a 7/8 time signature. The notation includes various accidentals and rests.

Handwritten musical notation on a single staff, featuring a treble clef and a 7/8 time signature. The notation includes various accidentals and rests.

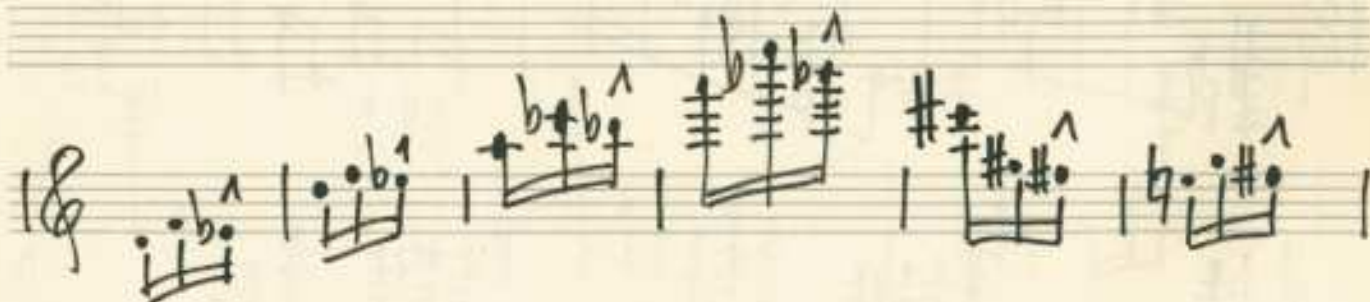
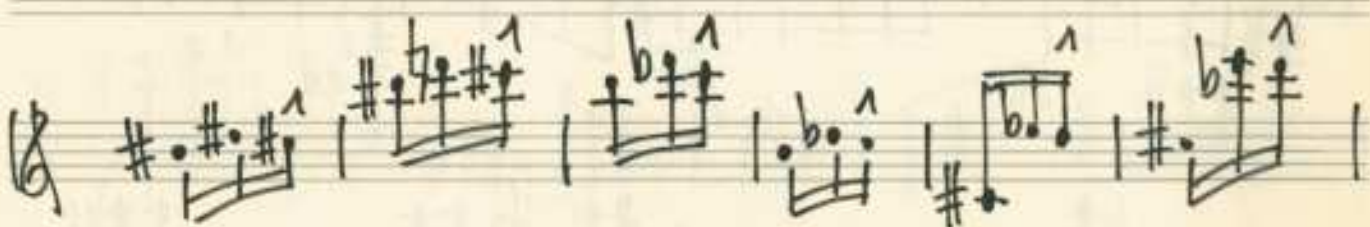
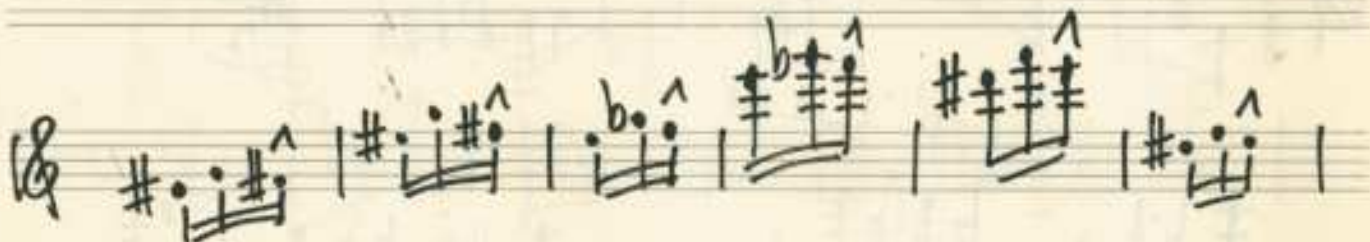
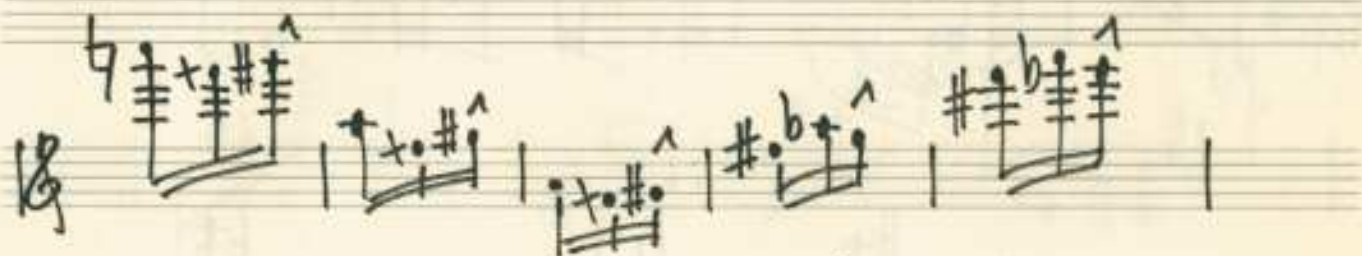
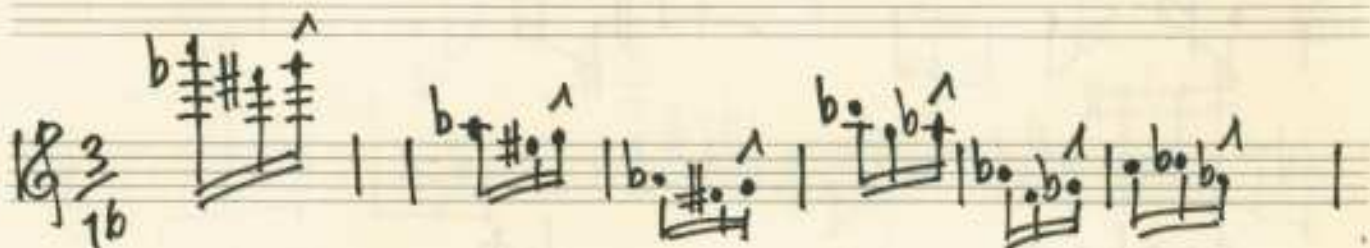
Handwritten musical notation on a single staff, featuring a treble clef and a 7/8 time signature. The notation includes various accidentals and rests. A circled word "Fine" is written at the end of the staff. Above the staff, the number "44" is written.

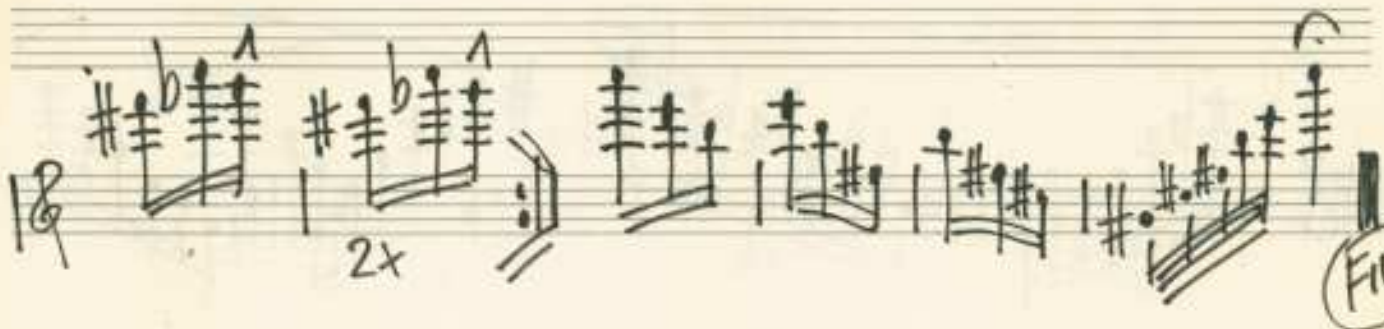
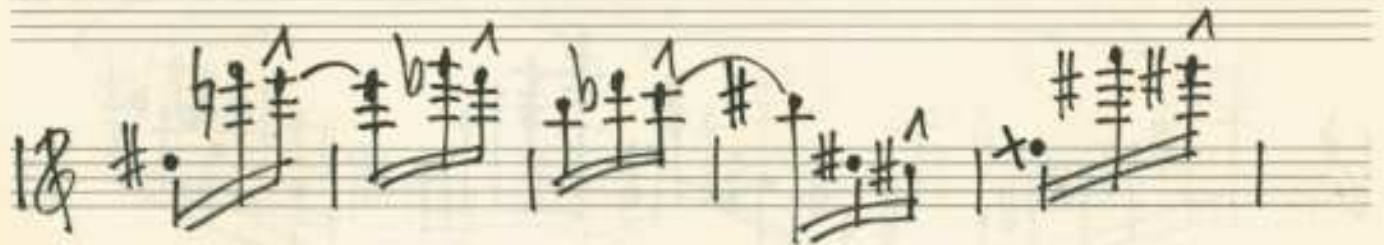
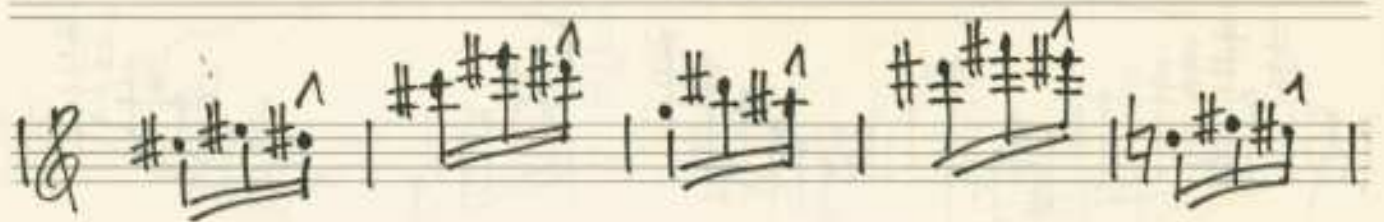
4.



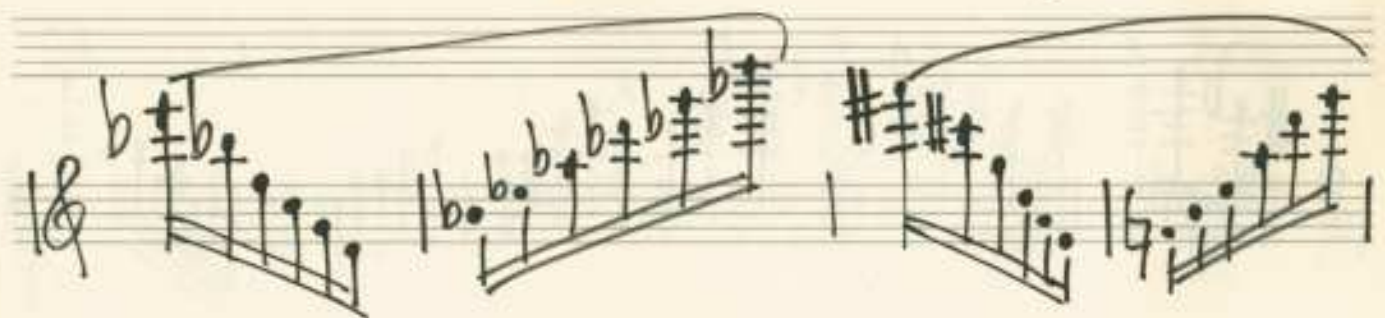
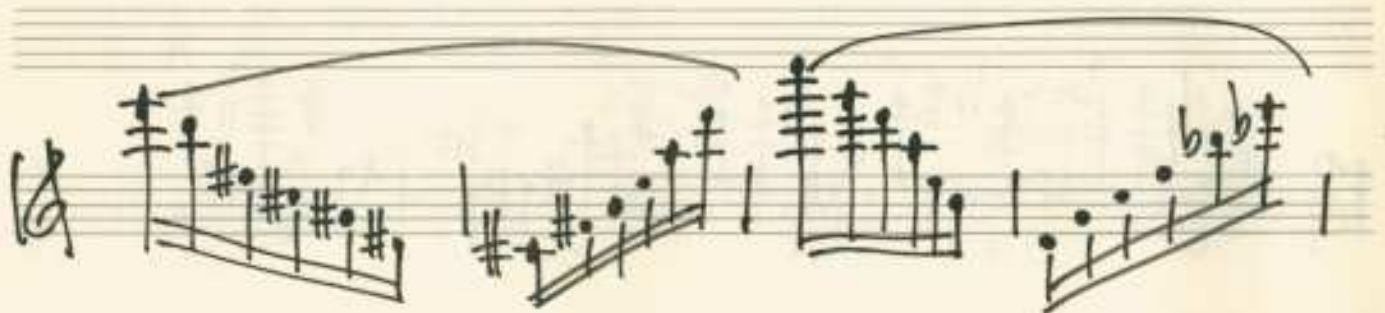
legato

5.



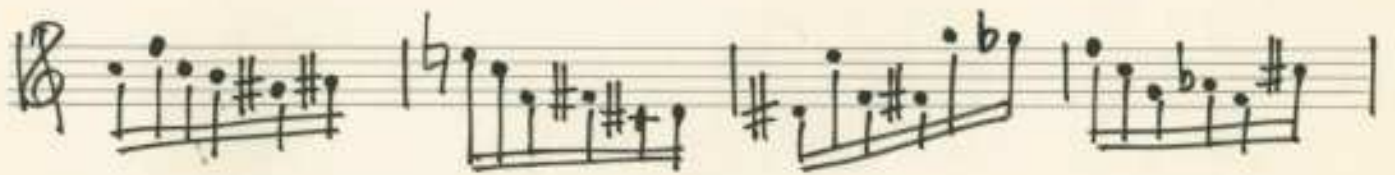
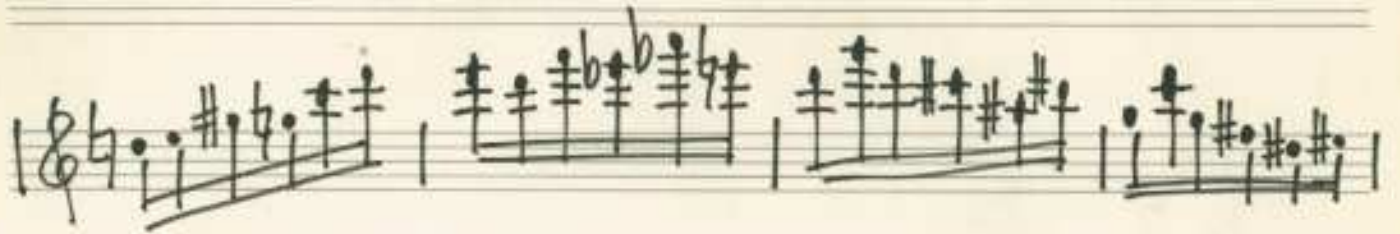


6.



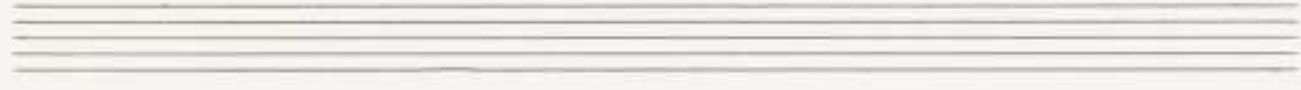
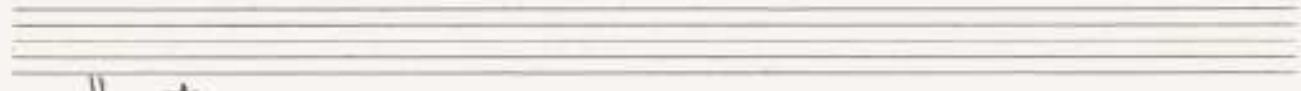
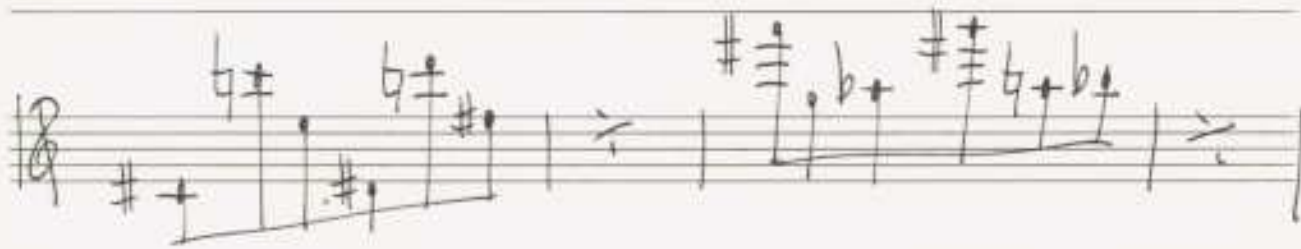
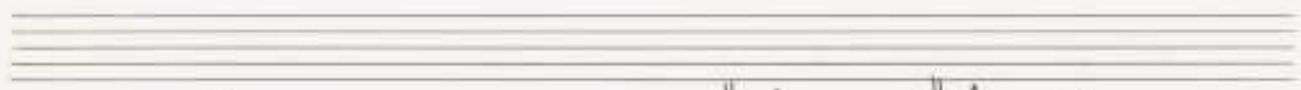
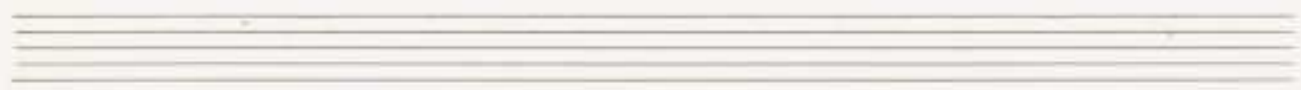
Acc. Prestissimo 7.





(Studien f. Flöte, Bd. 3)





Handwritten musical notation on a five-line staff. The time signature is 5/8. The melody consists of three measures. The first measure has a rising line with notes G4, A4, B4, C5, and D5, with a sharp sign above the C5. The second measure has a falling line with notes D5, C5, B4, A4, and G4, with a flat sign above the D5 and a sharp sign above the C5. The third measure has a rising line with notes G4, A4, B4, C5, and D5, with a sharp sign above the C5.

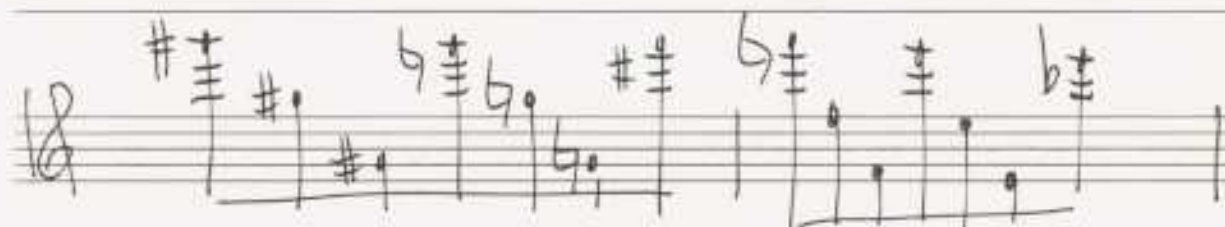
Handwritten musical notation on a five-line staff. The melody consists of three measures. The first measure has a falling line with notes D5, C5, B4, A4, and G4, with a flat sign above the D5 and a sharp sign above the C5. The second measure has a rising line with notes G4, A4, B4, C5, and D5, with a sharp sign above the C5 and an 'x' above the D5. The third measure has a rising line with notes G4, A4, B4, C5, and D5, with a flat sign above the D5 and a sharp sign above the C5.

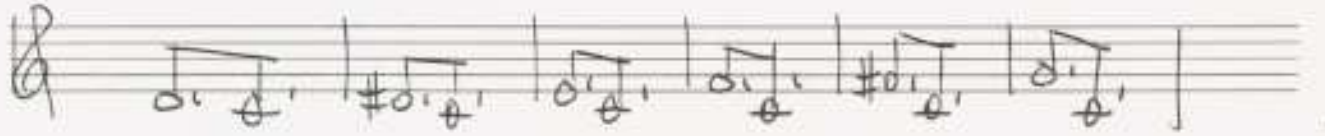
Handwritten musical notation on a five-line staff. The melody consists of four measures. The first measure has a falling line with notes D5, C5, B4, A4, and G4, with a flat sign above the D5 and a sharp sign above the C5. The second measure is a whole rest. The third measure has a falling line with notes D5, C5, B4, A4, and G4, with a sharp sign above the C5 and a flat sign above the D5. The fourth measure is a whole rest.

Handwritten musical notation on a five-line staff. The melody consists of four measures. The first measure has a falling line with notes D5, C5, B4, A4, and G4, with a sharp sign above the C5. The second measure is a whole rest. The third measure has a falling line with notes D5, C5, B4, A4, and G4, with a sharp sign above the C5 and a flat sign above the D5. The fourth measure is a whole rest.

Handwritten musical notation on a five-line staff. The melody consists of four measures. The first measure has a rising line with notes G4, A4, B4, C5, and D5, with a flat sign above the G4, a sharp sign above the B4, and a flat sign above the D5. The second measure is a whole rest. The third measure has a rising line with notes G4, A4, B4, C5, and D5, with a flat sign above the G4 and a sharp sign above the B4. The fourth measure is a whole rest.







Handwritten musical notation for C major triads. The notation is on a single staff with a treble clef. It shows five measures of a C major triad (C-E-G) with a wavy line above the notes. The first three measures are labeled "C DUR". The fourth measure is labeled "C" and the fifth measure is unlabeled. Each measure has a vertical line with a crossbar and a sharp sign (#) above it, indicating the position of the notes on the staff.

Handwritten musical notation for D major triads. The notation is on a single staff with a treble clef. It shows five measures of a D major triad (D-F-A) with a wavy line above the notes. The first measure is labeled "D DUR". Each measure has a vertical line with a crossbar and a sharp sign (#) above it, indicating the position of the notes on the staff.

Handwritten musical notation for E major triads. The notation is on a single staff with a treble clef. It shows five measures of an E major triad (E-G-B) with a wavy line above the notes. The first measure is labeled "E DUR". Each measure has a vertical line with a crossbar and a sharp sign (#) above it, indicating the position of the notes on the staff.

Handwritten musical notation for F# major triads. The notation is on a single staff with a treble clef. It shows five measures of an F# major triad (F#-A-C#) with a wavy line above the notes. The first measure is labeled "F# DUR". Each measure has a vertical line with a crossbar and a sharp sign (#) above it, indicating the position of the notes on the staff.

Handwritten musical notation for F# minor triads. The notation is on a single staff with a treble clef. It shows five measures of an F# minor triad (F#-A-B) with a wavy line above the notes. The first measure is labeled "F# DUR". Each measure has a vertical line with a crossbar and a sharp sign (#) above it, indicating the position of the notes on the staff.

B DUR

Handwritten musical notation for the B major triad in treble clef. The notes B4, D5, and F#5 are shown with a wavy line above them. A sharp sign is placed above the F#5 note. A flat sign is placed above the B4 note. The notes are connected by a diagonal line.

C DUR

Handwritten musical notation for the C major triad in treble clef. The notes C4, E4, and G4 are shown with a wavy line above them. A sharp sign is placed above the G4 note. The notes are connected by a diagonal line.

C# DUR

Handwritten musical notation for the C# major triad in treble clef. The notes C#4, E#4, and G#4 are shown with a wavy line above them. Sharp signs are placed above the E#4 and G#4 notes. The notes are connected by a diagonal line.

D DUR

Handwritten musical notation for the D major triad in treble clef. The notes D4, F#4, and A4 are shown with a wavy line above them. Sharp signs are placed above the F#4 and A4 notes. The notes are connected by a diagonal line.

E DUR

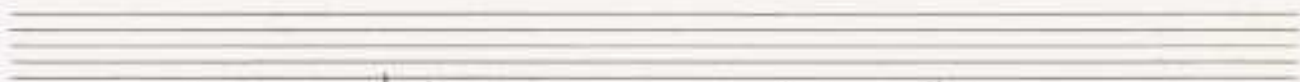
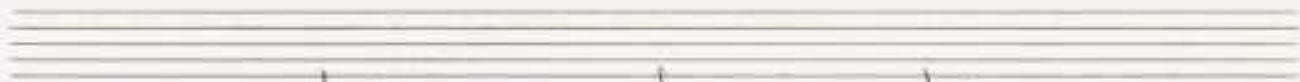
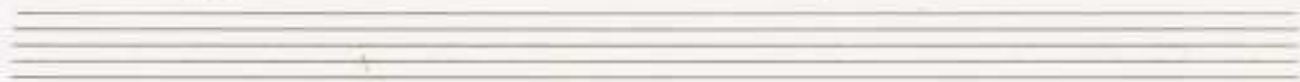
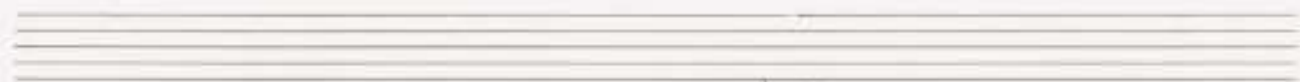
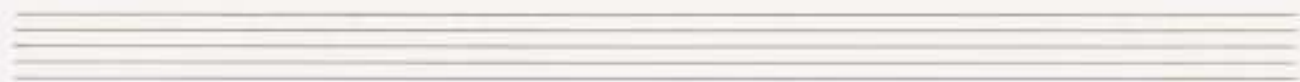
Handwritten musical notation for the E major triad in treble clef. The notes E4, G#4, and B4 are shown with a wavy line above them. Sharp signs are placed above the G#4 and B4 notes. The notes are connected by a diagonal line.

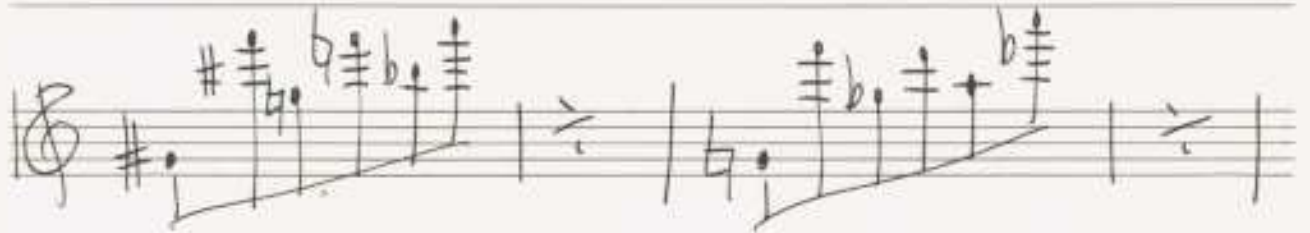
F DUR

Handwritten musical notation for the F major triad in treble clef. The notes F4, A4, and C5 are shown with a wavy line above them. The notes are connected by a diagonal line.

F# DUR

Handwritten musical notation for the F# major triad in treble clef. The notes F#4, A#4, and C#5 are shown with a wavy line above them. Sharp signs are placed above the A#4 and C#5 notes. The notes are connected by a diagonal line.





The image displays six staves of handwritten musical notation. Each staff begins with a treble clef. The notation consists of a series of notes and chords, with a staff line that rises steadily from left to right. The notes are often beamed together, and various accidentals (sharps, flats, and naturals) are used throughout. The first staff starts with a sharp sign. The second staff has a sharp sign followed by a flat. The third staff has a sharp sign. The fourth staff has a flat sign. The fifth staff has a flat sign followed by a sharp. The sixth staff has a flat sign. The notation is dense and appears to be a study or exercise in chordal movement and melodic contour.

